

Mark Bush

4-6-38



Matilda

JUNE, 1938.

FULL

Evan Evans Pty. Ltd.

680-8 ELIZABETH STREET, MELBOURNE, C.1.

Official Canvas Goods House to the Girl Guides' Association.

**SPECIAL CONCESSIONS OFF LIST PRICES
TO ALL GIRL GUIDE ORGANISATIONS.**

Write for Particulars to Your Headquarters, or Direct to Us.

TENTS and FLYS
GROUNDSHEETS
CAMPING GOODS

FLAGS
TRAVEL RUGS
CAMP BEDS

WATERPROOFS
SLEEPING BAGS
MATTRESSES

SPORTING GOODS

We have
arranged
to allow
Concessions
on all
Sporting
Goods.



Write to
Us
for Our
List,
Prices
and
Particulars.

TENNIS, GOLF, CRICKET, BASEBALL, BASKETBALL AND INDOOR
GAMES.

SUPPORT THE FIRM WHO SUPPORT YOU

"Matilda"

An Official Treasure Bag for Guiders' Information for Victoria, Australia.
OPEN DAILY, from 9.30 a.m. to 6 p.m. SATURDAYS, from 9.30 a.m. to 1 p.m.
Price: 3/- Per Year; 4/- Posted. Single Copies, 6d. each.
Editor: MARGOT ANDERSON, Guide Headquarters, 60 Market Street, C.I.

VOL. XIV.

JUNE, 1938.

No. 11.

EDITORIAL.

We are glad, after such a long delay, that the Ranger Page has at last been started, and we are indebted to Elsie Armstrong for editing it. We have felt that the Rangers have been neglected as far as Matilda is concerned, but now everyone, Guides, Brownies, Rangers, and Extensions are represented.

The Brownie Guides are to be congratulated on their activities for raising funds for the Camp House, which is now ours. Their many efforts have been a great success financially and we hope they have had great fun in running them.

:O:

WHAT ARE WE DOING.

Those few people who were privileged to listen, over 3UZ, to Mr. Alec. Einar Pratt on 23rd April last must, without doubt, have been so very much impressed by the story he told that they will never forget it and never cease to marvel at it.

Mr. Pratt recently returned from China where he was Director of the Sino-Japanese Information Bureau. The title of his broadcast was "The Tragic Jamboree." He told a story of the heroism of the Boy Scouts and Girl Guides in China during the war. It was a story of heroism, of love of country, of devotion to duty and of love of one's fellow-man, regardless of creed, nationality or colour. And from all this two things must force themselves on the minds of the world, namely the tremendous value of Scout and Guide organisation and of the discipline which they teach our young people.

In practically every one of us there is this same seed of bravery, of courage and of devotion to duty, and yet so many of us, when called upon to make use of the best that is in us, fail and are worthless to our country and our fellowmen. Why? Because we lack training and know little or nothing of discipline both of which are essentials of the Scout and Guide organisation.

Another point of very great interest in Mr. Pratt's talk was the apparent ease with which the two separate units, the Scouts and Guides, became a composite unit just as soon as the time for action arrived. Each was obviously what it is meant to be, the complement of the other.

Mr. Pratt concluded his talk by saying: "The Girl Guides are doing magnificent work alongside their brethren, and a typical example of what a Guide does in the course of a day is contained in this report which I received from the headquarters at Hankou:

Reported at headquarters for duty at 8 a.m., then went to a refugee camp. Taught a class of children, read the day's news to the adults and helped portion out their food. In the afternoon on duty at the hospital, helping the doctors to

bandage minor cases. Reported again at headquarters at 7 p.m. Then home to bed."

—M. LITTLEJOHN.

:O:

GUIDERS' COMMITTEE.

Owing to the Guiders' Committee picture night, being held on June 3rd, at the Plaza, the Committee will meet on Friday, June 10th, at 8 p.m.

BETTY POTTER, Chairman.

:O:

SYDNEY CELEBRATIONS.

Many Victorian Guiders and Rangers have been enquiring whether there is to be a Guide Camp in Sydney at the end of the year, during the visit of the Chiefs.

While plans were being made for the holding of a camp, the Guides of New South Wales were asked to be responsible for the Hospital at the Scout Jamboree. As ten thousand Scouts are expected to be in camp, the Guide Association feels they are tackling a big job, which will absorb most of the people who would be needed for a big Guide camp, so they have regretfully cancelled their own camping plans.

Guides from other States who happen to be holidaying in Sydney at that time, will be invited to join in a March past which is to be part of the Scout Jamboree programme.

We should be glad to have details later of any of the Victorian Guide people who expect to be in Sydney at the end of the year, so that we can report to Sydney Headquarters about the numbers they may count on to include in the march.

—S.H.I.

:O:

REPORT OF JAM MARKET.

The Jam Market was held at headquarters on March 7th, 8th and 9th, and by the kindness of the H.Q. staff was continued until the end of March. Total gross receipts, £48/7/-. Expenses amounted to £2/7/-. Resulting in a nett profit of £46.

The result was considerably helped by the local sale of jam in several country districts who forwarded the profit to the town market, also by generous donations from friends of the movement.

Jam was received from Districts, Companies, Packs and individual Commissioners, Guiders, Rangers, Guides and Brownies and friends of the movement both in town and country. Members of the Country Women's Association were most generous in their support with donations of jam.

The organisers were most grateful to all donors of jam and particularly those who made arrangements for delivery of jam free of charge, also

for all who bought the jam and called for it.

Sincere thanks are also due to Miss Wettenthal for the attractive posters and to Headquarters staff who helped us in so many ways.

—BARBARA CLARK.

:O:

STRADBROKE CUP, 1938.

The subjects for the Stradbroke Cup Competition this year have now been drawn up by the Victorian Guiders' Committee and are as follows:

Brownies.

A. Scrap-books: These are for nature and are to be illustrated.

B. Modelling in relief: Some part of Pack life or fairy ring.

C. Useful article to be made with decorative tacking.

Guides.

A. Log Book (illustrated): To include Company activities, tenderfoot and second-class work, and an essay on history and development of Girl Guiding including Victorian section, of not more than 500 words (as for First-class Test).

B. Baby's dress to be handsewn, inset sleeves.

C. Knot chart for use of patrol.

Rangers.

A. Log Book (illustrated with cover): To include hikes and menus, pioneer and nature lover badges, and international and local knowledge.

B. Toddler's dress and bloomers to be sewn.

C. Cardigan or pullover with sleeves, to be knitted for self or child.

This year the cup may be won by a Pack, Guide or Ranger Company—be they active, Extension, Post or Lones. But we only want *one* entry in each section from each Pack or Company. Also please see that each article sent in is well labelled with the Pack or Company's name, or committee will not take responsibility for any article lost. Any literature you may require can be purchased in the shop or lent from the library.

Log books and scrap books may be illustrated in any way you please, but try to be original.

For Brownie relief modelling use 3 parts flour, 1 part salt and colour with water colours.

Remember that a chart hangs up in some way.

Rangers, the dress and bloomers may be sewn either by hand or machine, please yourselves.

Packs and Companies must enter for all three sections, not just part of a section.

All articles entered for the Competition (clearly marked otherwise no responsibility will be taken) must reach Headquarters not later than 15th September, 1938.

Further details will be published in Matilda as to methods of labelling, etc.

BETTY POTTER,

Chairman Guiders' Committee.

:O:

BENALLA DISTRICT NEWS.

What We Did As We Could Not Go To Camp.

This Summer, owing to the paralysis epidemic, none of us could leave our town to go away to camp or to the sea-side. So in January we drove

out to Captain's property, about ten miles north of Benalla. We each took our bedding, and tucker to last us four or five days. And we wore shorts and blouses and shady hats. Groups of five or six of us went at a time. First we pitched a tent and learnt the proper knots for it, and made "gadgets." But we found the tent so hot to sleep in that we slept on stretchers on the verandah where we were safe from snakes, and from where we could watch the sun rising in the morning, and we could hear the leaves of the trees rustling, and the noises of the animals round about. We had great adventures with the bull, especially one morning when we were feeding the sheep dogs and left the latch off the gate, and the bull came into the garden and poked his head right onto the verandah. We always remembered to shut gates properly after that! Every morning, after cooking our breakfast, washing up, and passing our Bed-making Test for second-class, while Captain was busy in the house, we went down to the edge of the lake. Sometimes we caught yabbies, and the first morning we paddled, but we came out with long stockings of mud on our legs. After a good deal of practice, we all passed our "Stalking" and "Tracking" amongst the trees on the water's edge, it was great fun.

We were always ready for a very large lunch, and after this we had a rest hour on our beds. Then we sewed our "Morse Flags" on the machine, though for some of us the wheel would keep turning the wrong way. In the afternoons we took biscuits and cool drinks, and hiked into the scrub and up into the big hills. Here was a splendid place to practise signalling to each other from one hill top to another; and some of us passed our signalling test. Coming home we visited a spring where a mob of kangaroos always comes to drink; we often saw them but never when we had a camera. One day we tried to stalk up close, but they did a neat high jump over the fence into the scrub. We were always ready for a wash and brush up, and a hearty tea when we got home. And afterwards we watched the sunset and the Southern Cross in the sky. In the evenings we played "Comic Families" and listened to the wireless and studied the Guide Law and the Legends of the Saints. Then to bed, which were often apple-pied, and sometimes we ended with a midnight feast. And so to sleep until 6 o'clock when we woke up Captain with sing-songs and the gramophone playing outside her window. The days were all too short when it was time for us to leave and for the next group to come. And this is how so many of our Company are 2nd class Guides this year, and determined to be 1st class soon. We are all looking forward to real camp next summer.

:O:

"SLUMS."

There was only one fault to find with the camping scheme above, that was the presence of lolly packets and papers all over the paddocks afterwards. Is there any Company that has not at some time or other forgotten the golden Guide rule that "never a trace we leave behind?" We used to find it particularly hard to remember, until our first Company meeting this year. This is the programme.

"We arrive to find the club room in a most

untidy state—papers strewn everywhere, dirty frying pans, billies, and other Hike equipment all over the floor. After exclamations of disgust and a general tidy up, we have a Pow-Wow, Captain telling us about the Housing Board in Melbourne which is trying to arrange for everyone to have a nice house to live in. Then there is a story comparing two houses; one in a good area which is dreadfully dirty and untidy, and the other in a very poor part which is kept spotless. Then Captain says which is a Slum, do you think? And what do you think a Slum really is? Then set to work in Patrol Corners and manufacture a "Slum" with the aid of these empty match-boxes, match sticks, paper, and plasticine? At first this is greeted with looks of incredulity, and all sorts of questions.

"Have we got to make houses out of those things, do you mean?" "Yes." "What can we balance them on?" "Use your gumption." "Ooh, I know what we can do!" etc. Gradually the competition rises to the peak of keenness and excitement. Great giggling is going on in the 'Poppies' corner over their community wash house and bathroom for a whole street of houses; also in the 'Pansies' corner is much hilarity over the plasticine dogs they have in their gutters. And there are many cries of "Keep out till we've finished," etc. Higglety pigglety rooves, broken fences and window panes, falling chimneys, and untidy back-yards are some of the ideas well thought out. At last time is up, and Captain comes round to judge the "slummiest Slum." There is very little to choose between them, but finally the dreadful "dead dogs" give the Pansy Patrol top marks. Then we all go round and see each others, and what fun this is. Another Pow Wow now to remind all that we think Slums are just dreadful, and we are never going to leave anything even a little bit like that behind us wherever we have been. In our Company we now have a secret sign, and whenever Captain finds anything that we have left even remotely like a Slum, we find our secret sign pinned up there, which means we have to put it right immediately."

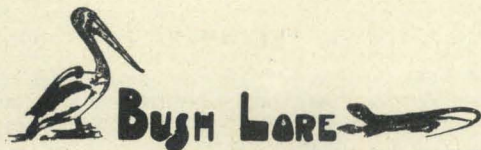
And here is a camp-fire song about it all:
To the tune of "My Bonnie is over the Ocean."

CAMP-FIRE SONG.

Girl Guides never leave things untidy,
Papers, and bottles, and tins;
Pick up everything that's untidy
And put in the fire or bins.

Chorus:

Pick up, Pick up! Pick up the rubbish that's on
the ground.
Pick up, Pick up! Oh, don't leave a litter around.
—"Y.B." Benalla.



Editor: ELSIE SYDES.

Morning Walks.

When we talk "hikes," walks, etc., we think of afternoon, evening or at the best late morning. I want to remind you that the early morning

walk is something that stands alone. "There is something inexpressibly beautiful in the unused day, something beautiful in the fact that it is still untouched, unsoiled; and town and country share alike in this loveliness." You will see the sunrise, rabbits playing, smell the dew, endure the early nip in the air, and if you haven't got to hurry home, you will see dozens of birds, first at breakfast, then preening and warming in the sun.

I have a great urge for an early outing at the moment. *How about trying one, too?*

Owl on Road.

Driving along a country road just after dark a few nights ago I saw what I took to be a rabbit hop along, then sit fixed by the car lights. On driving closer it proved to be an owl—a boobook I should think. When we were nearly on top of it, it recovered from its daze, and flew away.

Dead Magpies.

And this reminds me of our sad experience at Christmas time. We counted the dead magpies on the side of the road, and got up to 19 or 20. I like to think that Guide people will sacrifice a little speed to save these daring birds. We watched them and came to the conclusion that they stay as long as possible out of devilment and then because they are slow in rising from the ground (although strong fliers) they get caught. Have country Guiders had much experience this way?

Keeping a Calendar.

Do your Guides keep a monthly calendar of Nature's doings? If not, you could start them on it in June. You can be completely ignorant and make a great success of it, because you have only to use your *eyes, ears and nose* and keep a record of the results. Now, at the end of April, for instance, BLACKBIRDS WERE MATING, while in MAY the ROBIN IS RETURNING.

More About Calendars—What to Note.

1. Movements of birds—migrating, nesting, mating.
2. Sunrise and sunset.
3. Stars and constellations— are the same ones always in the same places, or always visible?
4. Blooming of flowers—early or late. First wattle, etc.
5. Insects—when hatched, etc.

Once the Guides have a calendar they will be thrilled to look out for these things the next year.

Viscount Grey says: "The other quality is that the best kind of pleasure in outdoor nature does not depend on novelty, but upon enjoying things which recur in the seasons of the year. Every season of the year brings its own aspects of beauty or its own subjects of interest."

"Woodpeckers."

I have placed a log shelter for them on a pergola in the garden, and they use it every day. They come when I call them, to feed them on cake crumbs. The only days when they do not come, are when the creek is in flood, for then they are too busy eating the insects that are forced to seek shelter up the trees, away from the water. They take crumbs to their nest about a quarter of a mile away, and as soon as the chicks can fly, they bring them to the garden to enjoy the protection and hospitality that it offers them.

Wilt in Tobacco.

This disease attacks a few plants in a field and only the extra robust ones. It starts in a leaf or the stem and travels with the sap stream to all parts of the plant, twisting and burning the leaves brown. A perfect plant to-day may be in ruins to-morrow. I have never seen any adjoining plants catch the disease.

Finches—Their Nest.

I noticed the little finches—very timid birds—inspecting a tree by a busy doorway. I thought "Surely they won't build there?" but they did, for in a few minutes they had started their home, not 5 feet above the ground. Why did they build in such a spot? To get away from the other birds—sparrows, etc.

Another thing I noticed—they always closed the door when they left home, by placing a feather over the entrance.

How They Got the Cutworms.

One day they brought one cut-worm after another to the chicks. As cut-worms live under the ground I wondered how they were getting them so freely. Watching them, I smiled to see the wise little bird hop down to the ground and intercept a wasp, taking a stupified grub from him.

Garden Insects—Woodlice or Slaters.

Full-grown, a slaty-black in colour, as a rule growing darker with age. Hating the light, they live under heaps of rubbish, flower-pots, etc. When disturbed they scurry away, some roll themselves into a tight ball. The young are about as big as a pin's head, when newly born. They live on decaying vegetable matter. Do you know them?

Scorpion—Flies.

We have a thick cypress hedge and on walking past it out flew a pretty fly with reddish brown about it and blue wings—a pretty creature, but never allowing me to get a good look at it. However, I decided that it lurked in the hedge for the flies which also sheltered there. So I consulted Leach and found that the SCORPION-FLY fitted the bill, even to feeding on flies. One poor soul was later caught in a spider's web and I was able to have a close up.



(Joint Editors: M. BUTT, M. HESELTINE.)

BROWNIES ABROAD.

It was not my fortune to see much of Brownies while I was away, but I did meet Brownie Guides, I did see several Packs and I did see some English children both in and away from their homes.

The Packs seemed very like our own Packs, I thought the Brownies looked smaller and younger than ours did. This caused me much thought. I have often felt that we need to reflect on some of the activities in which our Packs engage. I am a school teacher and it always worries me to see a child playing tennis at school and playing games at a Pack—games which are very similar to those played by her smaller sister in the kindergarten. She may enjoy these games, but do you not think she would feel ashamed if

the others in her class were to see her? Some games are great fun—but they really belong to the kindergarten and I don't think it fair to use them for older children. Our children do seem older for their years than English children, and so games which are suited to an English Pack are not necessarily suited to us. Then again some of our Packs are of children with more childlike outlooks so that they are only up to younger games. But I cannot think it right to see a great similarity between kindergarten and Packs, and there far too often is.

The English children seem to me to be definitely more courteous than our children, of course it is easier for them, for they are brought up in an atmosphere in which courtesy is a more natural part than with us. And then their singing! I think my most pleasant memories of children abroad are of their singing—Swiss children in a tiny village, English and Scottish children around campfires and at Pack meetings—all three groups singing with a sweetness that is unusual with us. I think singing should have a large share of fun in it, but it should not be simply an affair of mere volume—you know the dreadful results of that, women with piercing voices who somehow always seems to sit behind one in Church and bellow the hymns with no thought as to the meaning of what they sing. Are any songs meant to be simply shouted? Not many, I should think. And lest anyone should say that Australians have not as good voices let me add that the most delightful choir I heard was one of boys from London slums, and the Cockney voice is no improvement on our own.

We have something to learn from them there, and we have something to teach—well English children at least. Our children are generally smarter in their appearance. I was never reconciled to seeing schoolgirls in wilted collars, or large guides or rangers in socks. I think, too, our children are more self-reliant, but here I think we need to pause. My profession brings me in contact with many children and their parents and I am amazed at the amount that the parents do for each child, the general excuse is "Its quicker." I think we often think its far easier to do things for children than to teach them to do these things themselves, and of course we do them better; but I am not so sure that we will be able, much longer, to say that our children are more self-reliant. Of course, we generally get as we expect, and unless we expect a high standard we will not get it.

When I was at Our Chalet some Brownie Guides exchanged games with me, I learned a number of Dutch games which I sent to this page. Unfortunately the games never reached Matilda, but I will send them in again. They are very interesting, one or two seem to be almost guide games, and one or two seem almost pre-Brownie, but this variety should make for their usefulness.

At Foxlease, I gained, as one would suspect, the most help of all, and I hope later to send in some of the ideas I was given there. I am not exactly in the ranks of opera singers, so all the songs I learned abroad I not only wrote down the words but the music as well. Most of the songs were guide songs, but I had some Brownie songs and singing games as well, and eventually I will leave at Headquarters a book with songs and games and music so that anyone may use it.

—L.T.

HOW MENURA LEARNED TO DANCE.

High up in a gum-tree sat a beautiful cockatoo, his white feathers and yellow crest gleaming in the sunshine, and he looked as happy as a bird could be.

From the ferny gully came a soft sweet song, which blended all the songs of birdland. Had the cockatoo been listening he'd have known it was the song of Menura, a shy bird, who lived among the bracken, but he was too busy thinking of the grand party he was giving next day. All the important birds were coming, and Bell Bird was to sing for the dancing, but no bird thought Cockatoo would look half as fine as he did—"white looks so distinguished," he said to himself. He hadn't invited Menura, because he wasn't important enough—just a dull brown bird, with big feet, and a long tail—why he couldn't even fly properly.

Mrs. Bell Bird, arriving all a-flutter interrupted his thoughts, "Oh, Mr. Cockatoo," she panted, my husband can't possibly sing for you to-morrow. He's got such a cold—hoarse as a crow. I've wrapped his throat in flannel flowers, and I must get back to him now." And off she flew, leaving a disappointed Cockatoo wondering whom he could possibly get to sing at such short notice; and why Bell Bird had to catch cold then, of all times. Suddenly he became aware of Menura's song, and listened, head on one side—here perhaps was a singer for his party. He certainly could sing, but would he? "He's a shy fellow," thought Cockatoo, "but he must be good natured to let little Pilot Bird share the food he scratches up; so down he flew to ask him.

At first Menura was unwilling, but Cockatoo said, "Think how disappointed the birds will be if we can't dance, and you could stand behind a screen of ferns at the side of the stage." So Menura said he'd do his best.

The party day was clear and sunny, and all manner of beautiful birds gathered in Fairy Glade chattering loudly. When it was time to dance Menura began to sing softly and quiveringly at first, but as he looked through the ferns and saw bright Parrots, Yellow Robins, Redbreasts and Wrens gaily dancing, with hardly a thought of the hidden singer, he forgot his shyness and his song rose clear and strong, sweeter than any song ever heard before. No bird could resist such music, and soon every bird except Menura was dancing, but presently he began to dance too. His first few steps were clumsy, but, as he raised his long tail and brought it over his head revealing splendid plumes, he seemed to find his balance and twisting and twirling, forgetful of his screen, he danced onto the platform. One by one the other birds saw him, and stopped to watch till soon he was the only bird dancing. But how he danced—the quivering plumes in his tail looked like moonlight on leaves or the flying water of the falls; and all the while he sang mingling the songs of Bell Bird, Magpie and hosts of others, Kookaburra's laugh and Whipbird call with his own sweet notes.

When he stopped from sheer weariness all the other birds crowded round praising him; and Cockatoo was so pleased he took some of the lovely supper round to the sick Bell Bird.

Menura still shares his food with the Pilot Bird, and every year his lovely tail gets bent and broken when he squeezes into the nest, to take care of the egg Mrs. Menura lays there, but next year new plumes grow, and he dances among the ferns while his mate and other birds watch, but if you would watch, too, you must be very quiet and still, for the Lyre Bird as we often call him, is still very shy. —S.G.

STRADBROKE CUP, 1938.

Will B. Owls read the notice about the Stradbroke Cup in this issue. The competition is all on Brownie work and should be a great incentive to Packs to do their very best. If you know of any B. Owls who do not see Matilda, tell them about it, as all information concerning the competition will be published in its pages.

GAMES FOR THE NEW TESTS.

Traffic Game.

Mark out four cross roads, label them A, B, C, D. Some Brownies are horses (blind-fold) driven by other, and some are blind people, with Alsations to guide them. The drivers and the dogs are given cards marked with the route that they are to follow, e.g., start from A go to B, C, D, A. B.O. is the policeman, and controls the traffic. Any crossing at the wrong time or jay walking gets a summons, (a bean). Change over and see which half of the pack has least beans.

Stop and Go.

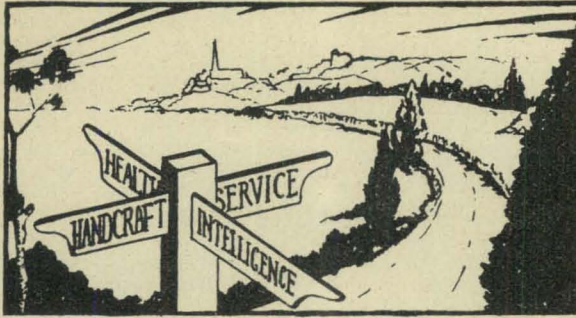
Let one half of the Pack wear their caps, and the other half be bare headed. Mark two lines a good long way apart, and let one side stand behind each line. B.O. has three flags, Red, Yellow and Green. When she waves the green flag, the Brownies start to hop across the "road," for the yellow flag, they either do not start, or, if on their way, go to which ever side is nearer, for the red flag they stop dead still. Anyone doing the wrong thing drops out; play two or three minutes (it is pretty strenuous) and see which sidé has most left.

Walkabout.

Brownies, cut animals or Bunyip-like monsters of paper, and these are pinned or stuck with a tiny dab of gum on a bare wall. A line is drawn ten feet from the wall and one Brownie has a boomerang (ball) which she throws at the wall trying to hit an animal and catch the boomerang again. If she hits an animal it is pulled down and given to her tribe (six) and if she catches the boomerang she gives it to the next member of her tribe, but if she doesn't catch it, the next tribe takes the boomerang. If the hunters are so expert that the boomerang is caught each time they have another turn using left hand and then give the boomerang to next tribe. Count animals and remove traces from the wall at the end of the game. —H.G.

BREVITIES.

How long is it since you saw your Golden Bar and Golden Hand Brownies fold, tie and put on (Continued on back page.)



THE SIGN POST

THE MUSIC LOVER'S BADGE.

"The man that hath no music in himself,
Nor is not moved with concourse of sweet sounds,
Is fit for treasons, stratagenus, and spoils;
The motions of his spirit are dull as night,
And his affections dark as Erebus;
Let no such man be trusted."

From these lines we conclude that the value and musical appreciation was not evident in Shakespeare's day. In these more enlightened times "the man that hath no music in himself" is scarcely admitted to exist. Music is one of the universal gifts; and while it is not possible for every person to make melody upon an instrument, yet it is possible for ears so to be trained, and minds so to be enlightened, that the great majority will ultimately be able to "hear with their ears" and understand with their hearts.

It has been found that as a result of fostering the love of music in children, their mental activity all round is stimulated. Dull and difficult children waken up surprisingly, and become assets instead of liabilities in a community. The world and music becomes a real and present joy, and affords outlet and release. Ensemble work (band, singing), ear training, gramophone records, team games, and scrap books will produce results such as these, and help to frustrate the gloomy outlook of William Shakespeare.

To win the Music Lover's Badge, a Guide requires a wide and thorough training. It is so easy to "know the meaning" (even the "musical meaning") of the following words. (See P.O. and R., page 61), and yet not really love the music. It can so very easily be a matter of intellect only, and veritable, dry bones. There must surely be some qualification of heart about any kind of lover! It is like the Guide Law—so easy to put on paper, yet so difficult to teach and baffling to test.

Clause I. of the badge requirements, a knowledge of the life and works of Bach or Beethoven; of Purcell and Cecil Sharp, and another musician of the Guide's own choice," could be catered for by the Company library, should this be an active adjunct; and might serve to interest other Guides. There is a very good series of booklets obtainable at Allan's for 1/- each, entitled "Youth's Own Book of Great Composers," published by Boosey & Co. Each composer is in a separate booklet. Cecil Sharp is not included in this series.

"The Book of the Great Musicians" (Percy Scholes, price 7/6), includes Purcell, Bach and Beethoven, and is a good investment.

An excellent book for arousing interest is "Young Masters of Music" by Mary Roberts (price 7/6). This does not include Purcell, but would be an asset to any Company library.

No end can be satisfactorily achieved, unless it is possible to have musical illustrations to accompany the stories. In the case of a Guide taking the Badge test, this would of course be essential.

Clauses 2 and 4 require the help of someone with musical knowledge and experience. A few evenings with the assistance of some such person able to illustrate, or possessing a gramophone and records, would be an excellent idea; and it is hoped, not an impracticable one.

I would like to suggest to those Companies which are fortunate enough to have the use of a gramophone, two records which are splendid for demonstration. They are "Instruments and the Orchestra." (8/- each, a pity, but worth it). One side of each record represents one of the four sections of an orchestra—strings, brass wood wind, and percussion. Each instrument in turn plays a theme. The order in which they play is given, so that the records are quite easy to follow. Really good pictures of instruments are rather difficult to find, except in expensive books on orchestral music. "Alice in Orchestra Land" is perhaps the best book available for Guide purposes; it may be had at Headquarters.

The wireless is probably the best answer to Clause 3. It is possible to hear all types of music in this way if the programmes are studied carefully. It may be difficult for a Guide to hear much symphonic or choral music at actual concerts, over a period of three months; but any opportunity that presents itself should be taken in preference to listening-in.

Lively interest is infectious, and music is a health-giving germ. Let us hope that the keen Guide musicians may pass on their enthusiasm, and thus Guiding will do its part in building up the intelligent musical audiences of the future.

—M.S.

:O:

INVESTITURE OF PATROL LEADER.

Hall in darkness, except for one large candle representing the Flame of Guiding, held by investing Guider. The Company is in horseshoe formation.

Invested Patrol Leaders and Seconds hold small candles, which they light from the Flame, and repeat Laws as they do so (each Leader or Second saying one or two laws).

Then the Company sings the Guide Law Chant.

The P.L. who is to be invested comes forward to Captain, who says to her:

Do you realise your responsibilities as a Patrol Leader?

P.L.: Yes—I must be prepared to lead my Patrol according to the ideals of the Chief Scout, to encourage them in their work in the Company, and be an example to them of what a Guide should be.

Captain: Are you prepared to undertake this leadership, to the best of your ability?

P.L.: Yes.

Captain: Can I trust you to remember that you are a member of the great international sisterhood of Girl Guides and Girl Scouts, and that you will always be worthy of that membership?

P.L.: As a Patrol Leader I promise on my honour to do my best for my Patrol, my Company, and Guiding throughout the world.

Captain then invests P.L. with trefoil in hat and stripe on pocket; as she does so, she says:

"As in days of old, knights had to prove themselves to win their spurs, so have you, during the past months, proven yourself worthy to wear the badge and stripes of leadership."

She then hands a candle to P.L. who lights it from the Flame, and then lights three candles representing the Promise, repeating Promise as she does so.

Captain hands her another candle, and she returns to her Patrol, handing the unlighted candle to her Second, who lights it from the P.L.'s candle.

Company then sings the National Anthem.

—E.A.

—————:O:—————

TOTEM POLES.

Not long after our arrival in camp, at Ommen, in Holland, we were handed our Totem Poles. I am afraid that mine did not convey very much to me! It was a stick, about eighteen inches long, one inch in diameter, with the bark left on it. At one end, a triangle of bark was cut away and in this a tiny pine tree was painted—I belonged to the Pine Tree Patrol.

On looking at the camp notice board, I found an attractive list of "Free Time Activities," "Hiking, Nature, Friendship, Use of Axe, Spinning, Singing, Handicraft."

"Hiking" means "Be able to make hot ashes quickly, by means of a criss-cross lay, and cook a hike dish, without utensils, over it."

"Nature" means "Know six trees and flowers in the neighbourhood of the hut."

"Friendship" means "Know the name and country of everybody in camp by the 3rd day." (No mean feat when the majority of names were almost unpronounceable!)

"Use of Axe" means "Know how to handle and sharpen an axe. Know how to use the big saw"—and so on.

Each "Activity" was accompanied by an intriguing little coloured picture, done in simple outlines, which I could cut and paint on to my Totem Pole as soon as I had earned the right. You do not need to be much of an artist to achieve the paintings, and I have found that five colours of Dynamel and a bottle of India ink are all the medium necessary. It was tremendous fun, and the badges to be gained may be arranged according to circumstances. Incidentally, I have found that various tests, such as Nature,

throwing a life line, square lashing, etc., can be passed almost unconsciously by this method. I am tremendously proud of my Totem Pole!

—M.H.

—————:O:—————

RELAY RACES.

Australian Flag.

Prepare sets of questions on cards regarding happenings and dates of the development of the flag. Have a set for each patrol. Place cards on chairs at end of hall. The patrols stand in files at opposite end, and are numbered. Guider calls a number, that Guide runs up to chair, picks up a card and runs back to place. The Guide back first and standing at attention has first opportunity to answer the question on her card. If she cannot give correct answer, then the second Guide gives the answer to her question. (Points may be awarded for speed and correctness—this gives all an opportunity to gain a point, rather than just the fleetest runner).

Union Jack.

Prepare sections of the crosses making up the flag, i.e., St. George's cross in two strips, and have the white background in a separate piece; St. Andrew's cross in two strips, likewise St. Patrick's; have an entire blue background. Have a set for each patrol.

Patrols stand in files at the end of the room, and are numbered. The Guider calls a number, and the Guide makes the flag asked for, e.g., what flag was used in Great Britain in 1795? (Or to make it more interesting, "What flag did Captain Cook hoist when he landed in Botany Bay?")

Running Relay, Combining Laws.

In patrol files. P.L. runs up to chair, picks up piece of cardboard off chair, runs round chair, back to patrol, touches No. 2 and goes to back of patrol. No. 2 repeats and so on. When the Patrols are back in their places and sitting down, the Guides will find that there is a number on each piece of cardboard, up to 10. The Guides must write down in two words a description of the law corresponding with the number on the card. Each Guide reads aloud her description, in turn, and the other patrol must guess what law is described, within a count of five. Patrols alternate.

—————:O:—————

CAMPING.

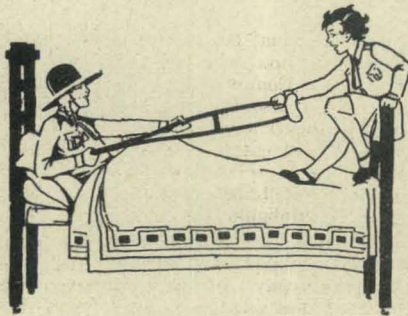
Indoor Camp Test and Pack Holiday Permit.

If there are sufficient applications to warrant it, a course of lectures for the above certificates will be held at Headquarters in August or September; watch the daily papers and next Matilda for full details. If any Guider wishes to attend the course it would be helpful if she wrote to the Commissioner for Camping, at Headquarters soon. This test is very often a useful preliminary to the Camper's Licence test. The Guider-in-charge of the course will be Miss Clare Broadhurst. Guiders wishing to take the test should have a signed nomination from their Commissioners. Forms are obtainable at Headquarters.

Week-end Camps for Guiders.

It is proposed to arrange a series of camps for guiders who have no previous camping experience. The suggestion is that we have three week-ends at "Gipton" in the spring about a month apart. Experienced campers would be there to take charge. The idea is that inexperienced Guiders would have the chance of finding out whether they like camp or not, and what it feels like to sleep in a tent that you have put up yourself! There would be general woodcraft and campcraft for those who would like it. Any Guider may apply. Watch the guide columns in the newspapers for more details!

ELAINE E. MORAN,
Commissioner for Camping.



Editor: Joan Alston.

EXTENSION NEWS FROM PARIS.

Miss Mary Lambe, who has been living in Paris for a month, writes to us and tells of her visits to Extension Companies there.

She says: I had a most interesting day going out with Extension Guiders. We visited a Mentally Deficient Pack in a home for difficult and backward children. They were so bright and cheerful, very high grade children on the whole.

The Extension Branch here have this one Mentally Deficient Pack, a Blind Company, a Deaf and Dumb Company, and several Packs and Companies in hospitals—mostly tubercular or polio. Another Company is composed of children who are heart cases. They come from their homes to the meetings. There is also a Company, in Paris, of children who are partially cured and who have returned to their homes but can't join an active Company—and they certainly *are* active in the active Companies! They think nothing of leaving home at 7 a.m. for a P.L.'s hike!

The Home we visited is for exceptionally poor children. It is run by the Government and the Matron in charge runs it entirely and absolutely on Brownie lines. She has had it for nearly a year and says the difference in the children since she had a free hand to run it on Guide lines, is most marked.

We watched the Brownies playing singing games which they did very well. Mostly organised and run by Plumie Grise and Plume Noire (Brown and Tawny Owls). Then the Sixes did some by themselves which were equally good.

The Guiders play very seldom with bean bags, compared with the amount we use them. They have fearsome games with a sort of small basket ball which may very easily put one out of action

completely. That, I believe, is half the point of the game!

We had a marvellous camp-fire in the evening during which one of the Guiders and four Brownies made their Promise. The Promise is always made before a fire—I don't quite know why this is—and it is a most impressive ceremony.

The Brownies' one is charming. They stand with their arms outstretched and the fingers of the salute touching those of B.O. and T.O. As each one made her Promise, she stood beside B.O. and put out her fingers for the others to touch.

They, like the Guides, do not make their Promise for some time after they've joined the Pack and wear uniform. When they and B.O. think they are ready and really understand what they are saying and doing, they make the Promise and are given the badge to wear.

:O:

OLD MAGAZINES WANTED.

Have you any old magazines or papers with brightly coloured pictures and advertisements in them suitable for children to cut out?

The South Melbourne Infantile Paralysis Clinic wants them.

Please let us have them if you have any. They can be left at or sent to Girl Guide H.Q., 60 Market Street, C.1., or to Joan Alston, 5 Struan Street, Toorak, S.E.2.

:O:

GUIDE SHOP.

Photographic Competition For All.

In the last competition, you showed what you could do with your hands; this time we want you to show us whether you have an 'artistic eye' and what interesting outdoor things you do in your Company.

The competition is for all Brownies, Guides, Rangers, Guiders, Commissioners, and there are two classes:

- (a) Under 14 years.
- (b) Over 14 years.

The prize in each class will be an order for 5/- to be spent at the Guide Shop.

The rules are:—

Best Photo of Guide Activities Out-of-Doors—must show activity, and not posed groups; must have been taken since 1st October last; photo must have been taken by the competitor, who need not have developed and printed it herself; both print and negative must be sent in. (Negatives will be returned if stamped addressed envelope is enclosed). Name and Company or Pack of competitor must be written on the back of each print.

Each entry must be accompanied by an entrance fee of 3d. All entries to reach the Guide Shop by 30th June.

The names of winners will be published in the July issue of Matilda, with details of the next competition.

—CLARA BROADHURST,

Commissioner for Equipment.

• Guide Camp House Supplement

June, 1938.

An Announcement!

After several years of search the Guide House committee takes pleasure in reporting that the Executive Committee has approved the purchase of a property for a Guide House.

The property is 46 miles from Melbourne on the Warburton Road and is at present known as Britannia Creek. It consists of 16½ acres of land, a main house of eight rooms surrounded on four sides by wide verandahs, a cottage of five rooms, an asphalt tennis court, and a large concrete swimming pool. There is water, electric light and sewerage. The price paid for the property was £2,850. We take possession at the beginning of July. Thanks to the courtesy of Mr. Hamer, from whom the property was purchased, many of us have already seen this lovely country home, and we do hope that by the end of this year every member of the Guide Association will have visited her Guide House.

—M. LITTLEJOHN.



A DREAM HAS COME TRUE.

In the very early days of Guiding in Victoria we had to obtain the use of homes and schools, for training weeks, from whose kind friends of the movement to whose co-operation we owe much of our progress, but we looked forward to a day when we might have a Home of our very own. Then came news that a beautiful home in Hampshire, called Foxlease, had been presented to English Guiders as a Training centre by an American, Mrs. Archbold. Every overseas guider who visited England came back to her own country with inspiring memories which she passed on to other guiders and set them all dreaming dreams. Since then Guide houses have been springing up in all parts of the world to which Guiding has spread.

Our ambitions were partly realised in 1932 when "Our Chalet" in Switzerland became the International centre of Guiding, this was made possible by the generosity of Mrs. Storrow, but most countries made some gift to the Chalet. Here every guide can feel there is a welcome awaiting her should she be able to visit it some day.

Now, in 1938, Victorian guides have at last acquired a property to be moulded into our own Guide Camp House. It is at Britannia Creek, between Yarra Junction and Warburton, in perfect mountain country. We can all feel a thrill of pride in its possession for its purchase has been made possible not only by generous gifts from friends and admirers of the movement, but also by the splendid efforts of the Guides themselves, for the dream did not come true while we slept.

Early in 1934 the Executive Committee de-

cidated that we should mark Victoria's Centenary by opening our Guide House fund. Mrs. Norman Brookes and Mrs. Euan Littlejohn were asked to inspect any properties that might prove suitable, and they covered many hundreds of miles in these preliminary searches. In August, the Guide Village, a sale and exhibition of handcraft done by the guides, brought in £700 and with this sum our fund was started. Then came the Chief's visit at the end of the year, and amongst our other visitors was Mrs. Storrow who made us a gift of £100 which we appreciate far above its monetary value for it links us closely with those other houses which she has presented to Guiding, and which have been of such service to the movement.

In less than three years, £3432 had been raised but a suitable property had not been found, although the members of the Executive Committee had been searching continuously. A sub-committee was now convened by Miss J. U. Boyes, (Mrs. Littlejohn being on leave of absence at this time), the members were Mrs. F. Faulkner, Miss M. Russell, Mrs. Richard Clark (Secretary), Miss M. Bush, Miss E. Moran and Mrs. Eric Wilson. Recently Miss Boyes place has been taken by Mrs. Littlejohn.

The members of this committee inspected properties from Macedon to Dromana and Gembrook to Whittlesea and considered the possibilities of many others about which particulars were received. Actually over seventy properties were visited, fifty country ones and twenty by the sea. Some proved to be dense virgin scrub, others mountain tops which would have been quite suitable if we were able to travel as the crow flies, some were mostly blackberries. Many properties were submitted which were too far away, too small or too large and for these reasons they had to be rejected. There was some doubt as to whether guides would prefer the seaside to the country, so the companies were asked to vote and the result favoured the country by a large majority.

At Woori Yallock a site was found which seemed to fill many of our requirements but while we were still striving to raise the necessary amount a much more suitable property was offered to us. It is now called "Britannia" and is at Britannia Creek, and this is to be our Guide Camp House.

WHAT WE HAVE BOUGHT.

We have 18 acres of land, two houses, some outbuildings, one cow and one horse, an oil painting, and—Oh, how wonderful to relate!—the swimming pool that you see in the picture really belongs to us.

The main house has about eight rooms and a wide verandah all round, some alterations will probably have to be made to make it more suitable for our use. Nearby there is a smaller cottage which can also be used if extra accom-

modation is required. There is an electric light plant, plenty of water and both houses have a septic tank system. Apart from the wooded land and that suitable for camping, there is an attractive garden near the main house, a splendid swimming pool, a lily pond, tennis court and a croquet lawn.

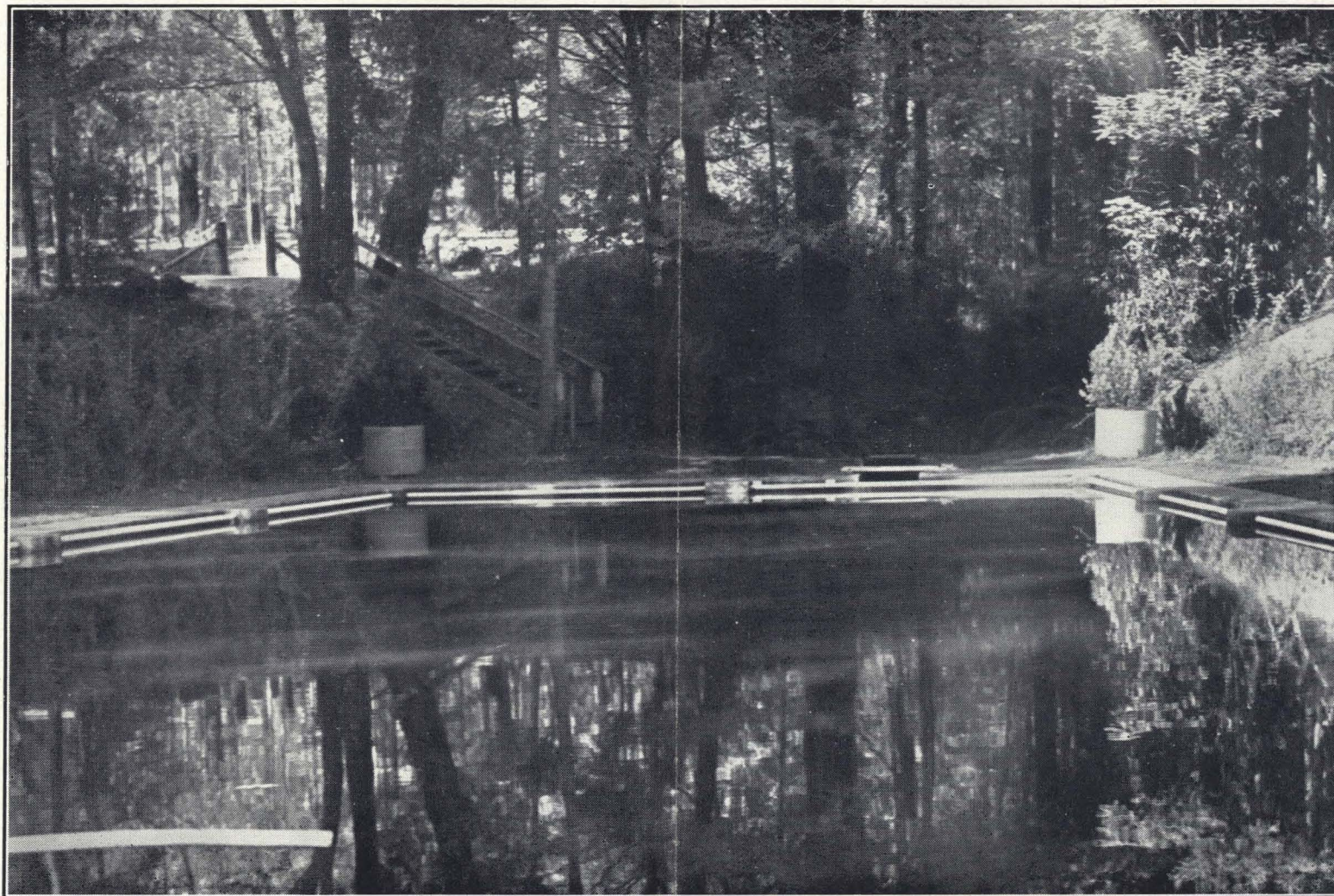
These are some of the things mentioned in the contract and when you visit the Camp House, and we hope you will all be able to do so very soon, you will see them for yourselves, but there are exciting things that are not put down in contracts which will be our very special treasures. First of all, there are the views that you will see at every turn—this way a wooded mountain slope, so close that one can see the conical outline of each tree—here a more distant vista of blue hills framed by the branches of some trees on the camp site—and over there a group of poplars stands out against the misty green background of the bush. Then there is the music of the stream as it splashes and gurgles and soothes the campers to sleep and goes murmuring on its way.

Who will try to estimate the value of that yellow robin who flutters up to say "Good morning" and if we meet with his approval, brings his family along to be admired, and I am sure none of us will be unappreciative.

THE CAMPING SITES.

The main camping sites at Britannia are in the big paddock which runs east and west from the garden round the house, down to the far end of the property, a distance of roughly five hundred yards. The ground slopes from south to north for about 75 yards and on the north side, outside the property, there is an unfrequented road which is well bordered with scrub which makes it private. At the end of the paddock nearest to the garden there are some splendid shade trees, eucalyptus, on the lower part of the slope. There is a good camp site in this area and it was used last summer by the Brighton District Rangers. There is a lovely western view of bush and mountain tops from this site, but perhaps the view at the other end of the paddock is better, as from there you can see Mount Donna Buang and other mountain peaks in their splendour, and in whichever direction you look there is a fine distance view of typical Australian mountainous country, covered by forests of fine eucalyptus. It was

at this end that fifty rangers took part in the Combined Ranger Camp last summer, the rangers came from all parts of Victoria and four were interstate visitors. There are some big shady gums dotted about, and an excellent patch of scrub. There two sites are ready now for use by quite large camps, and there



VIEW OF SWIMMING POOL ON THE PROPERTY.

Photograph by Pegg Clarke.

is another site on this paddock which we shall be able to use when we have had several working parties of guides, rangers and guiders to plant trees for shade and wind breaks, and to level places for tent sites.

Those are the camp sites on the main paddock. As well as these, there are, or will be, at least three smaller sites on the property. There is a small paddock in between the cottage and the house, that could be used at

once, though it needs to have some more shade trees planted. Between the main paddock, the swimming pool and the cow sheds there is some land that could be converted into a cosy little site, it will need some clearing and putting under grass before it will be available, and there is another small site near the main

everyone who camps there will have helped in some way with the planning and work on the sites, so that she may feel that pride of possession which comes with having helped to create something.

Besides the two camps I have mentioned, the Extension Guiders held a week-end camp in the cottage in March. We are very grateful to Mr. Hamer for having allowed us to camp on the property before it was our own. I know that those who have used it are thrilled to think that they were among the first to camp there.

—E.M.

HOW OUR FUNDS WILL BE ALLOCATED.

The purchase price of the property is £2,850 and our trustees have wisely insisted that we should set aside £2,500 to cover upkeep and general expenses, this means that we need £5,350. At present we have about £4550 and promises amounting to £202/10/6, so we can count on about £4752.

Mr. W. Angliss has generously promised to contribute £500, therefore we feel that we can confidently purchase our Guide House knowing that the Guides will not relax their efforts until we have raised the full amount. Perhaps we can do it before we actually take possession of our Home.

Last year companies, districts and individuals were asked to endow the Guide Camp House for one day each year by contributing £5, and this appeal met with a splendid response.

HOW THE CAMP HOUSE WILL BE ORGANISED.

The Camp House will belong to every member of the Movement therefore the Executive Committee would like a representative of each branch—Ranger, Guide, Brownie, Extensions, Lones will be on the general committee which will deal with its administration. Sub-committees will probably be formed to take charge of particular jobs, such as furnishing, upkeep of the garden, etc. So begin to think now of suggestions to make to your representative.

GUIDE HOUSES IN OTHER COUNTRIES.

In New South Wales and South Australia the Guides have been enjoying their own camp houses for some time, just as they have been doing in other parts of the world. In some

gate that will be available after a few alterations have been made. These small sites will be ideal for week-end camps, and small company camps which are such fun! I think perhaps that when we have had the fun of planting and working on these sites and watching them develop under our care, we may love them more than the others because we have made them for ourselves, and I hope as many as possible will take part in it all, and that

other countries the houses are differently organised and we are giving you some descriptions of other Guide houses, perhaps you would like to adopt some of their ideas. These details have been culled from "the Story of the Guides," by Mrs. Mark Kerr.

Spejderskolen—THE SCOUT SCHOOL DENMARK.

In one of the loveliest parts of Denmark among the low hills and wide woods of Fyen, the middle island of the three main pieces of land which make up Denmark, is a house called "Spejderskolen" (the Scout School). This is a practical and modern school of domestic economy, the centre of Guide activity and the headquarters of the Blue Guides of Denmark, all in one!

It is run like a Guide company, with the Chief, Froken Elizabeth Flagstad, as Captain, the Vice-Chief, Countess Haugwitz as Lieutenant, and four Patrol Leaders, who are the specially qualified teachers in cooking, and housework, dressmaking and gymnastics. All the work of a household of between twenty and thirty people is done by two teams which change places each week; one team cooks and serves the food, the other cleans and launders.

Everyone at the school wears Guide uniform. As well as household management the pupils learn several languages, first aid, gardening, handicrafts, and hobbies. Once a week there is a campfire with acting and singing, often there are walking or cycling tours. The training course lasts a year and the school is a unique feature of the Danish Girl Guides Association.

A CAMP HOUSE ON AN ISLAND.

Dominion Day, July 1st, 1929, marked the opening of Fettercairn Island Training Centre, the home of Canadian Guiding. Fettercairn Island was given to the Canadian Council by Mrs. Frederick Etherington, to be used as a Dominion summer training centre.

The island, one and a half acres in extent, is situated in one of the beautiful lakes of the Rideau Chain near Kingston, Ontario.

The buildings consists of the main house, three small cottages, storehouse, and a large boathouse, with an upper floor dining room overlooking the lake. It is a lovely spot of wild and cultivated beauty combined, and the charm of the island and surrounding lake and hill country makes a truly Canadian setting.

"SO THE GUIDES TOOK POSSESSION" (The Dutch Camping Centre)

In the beginning the idea of taking girls to camp was too monstrous to be thought about, a warning had duly appeared not to let girls sleep out in tents as this was positively dangerous!

Then The Hague Association was so fortunate as to get the use of a large old farm in most lovely surroundings in the East part of the country, it was said to be a haunted house and no villager could be persuaded to go and live there, so the Guides took possession of it. During many weeks they hammered and

painted, they scrubbed and they sewed, and changed it into the most perfect camp centre one could imagine. Here camps were held after the fashion of the American standing camps. Each guide could come for as many weeks as she wished the camp being open during ten weeks in summer. There were special weeks for Guiders as well where a certain amount of training could be given. Later on tents were pitched and very cautiously and quietly camping in tents was introduced, though the tents had to have wooden floors on legs, and oh! the draughts underneath!

In 1923 the separate group throughout Holland joined up and became the Netherlands Girls' Guild, and were given the use of a beautiful permanent camp site with a big log cabin at Ommen, one of the loveliest spots in Holland, so that now they have all kinds of training weeks in addition to camps at the permanent camp house.

SCOUT BAY (FINLAND).

The Finnish Girl Scout Association in June, acquired a camp site of its own, to which it has given the name of Partiopoukama (Scout Bay). This about four hours by steamer from Helsinki (look up your atlas), or it can be reached by going partly by train and then either by steamer to its own shore, or else by motor bus and motor boat. The boats crosses the wide bay, turns round a headland, and lands one on a rocky causeway.

In a green clearing surrounded by trees stand several log cabins painted red and white. The largest of these is the camp house, containing several rooms, the others are store houses, and bath houses, for in Suomi-Finland all Girl Scouts in camp enjoy the national luxury of a steam bath, "Sauna." They lie on wooden shelves arranged in tiers and flick each other with bundles of birch branches till the skin tingles, meanwhile water has been thrown on to the hot stones in the huge stove and the boiling vapour fills the whole building. When they felt themselves thoroughly cleansed and steamed the girls run out and plunge into the sea, swim about, then perhaps go back to the bathhouse to repeat the whole procedure.

Partiopoukama is a lovely place, miles away from any human habitation, and the Girl Scouts have the joy of really living with nature which they love so much, and which has entered into their beings, more so perhaps than is the case with the Guides in any other country.

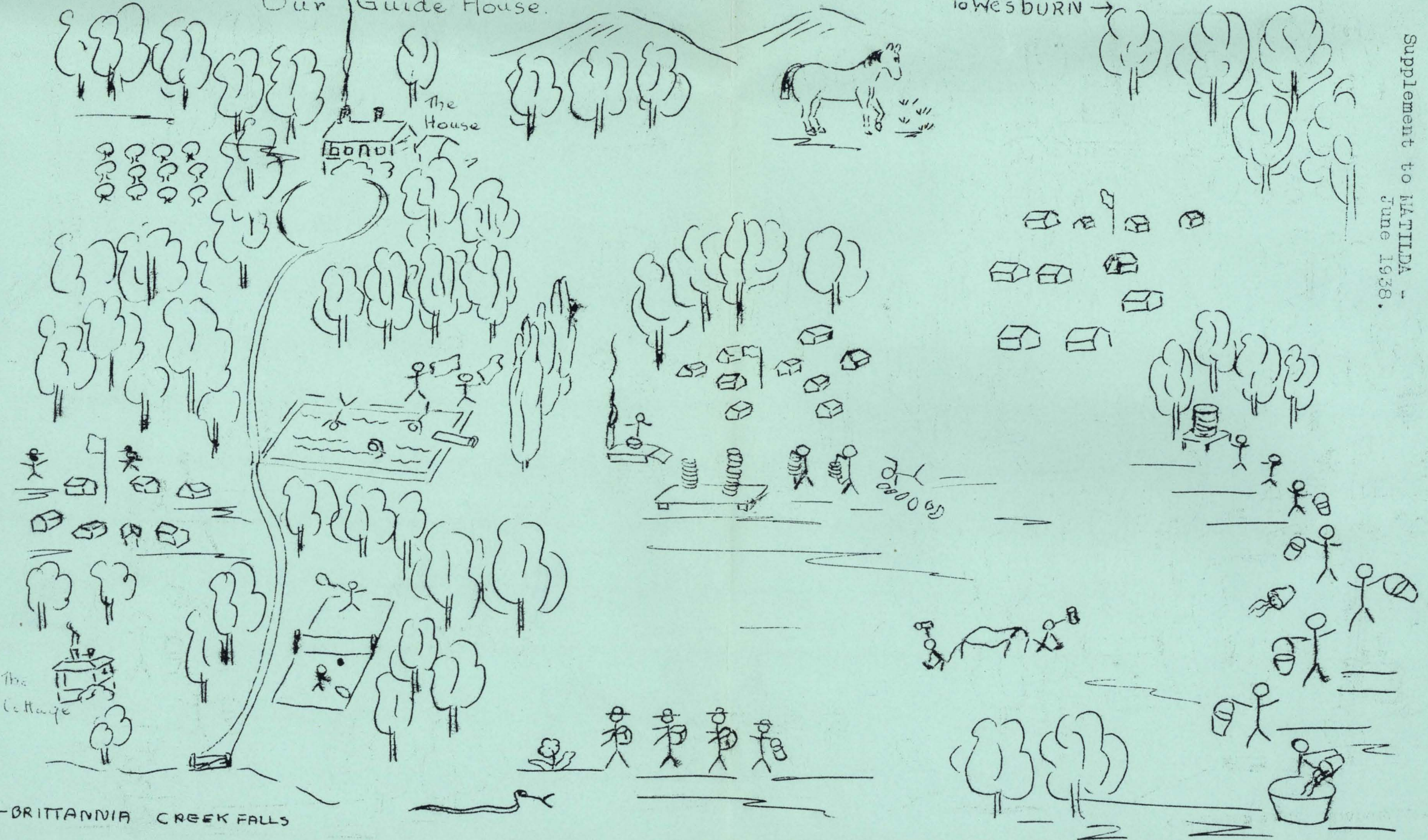
There are 22 days in June which have not yet been endowed. Have you or your Company a birthday in June—then why not endow one of these days? I wonder if the day that the contract was signed has been endowed by some one?

This month £66/12/7 has been added to the fund. This includes £35 raised as a special contribution from Brownie Guiders. May we congratulate them on their fine effort.

Extra copies of this supplement may be had at Guide Headquarters.

Our Guide House.

To WESBURN →



← BRITANNIA CREEK FALLS

Supplement to NATTLIDA - June 1928.

GIRL GUIDES.**Rangers' Snow Tour.**

Rangers who are keen about snow sports will be interested to hear details of the conducted tour to Mount Feathertop, which will be held from July 29 to August 5. The tour has been arranged by the Victorian Government Tourist Bureau, and offers special concessions to Rangers.

The party, which will be limited to 20 members, will leave Melbourne in charge of Miss Olive Norman, who will supervise all arrangements. During the stay at Mount Feathertop, instruction will be given in the celebrated Arlberg system of ski-ing. The inclusive cost of the tour will be £7/15/-. The rates are fully inclusive, and provide for second-class rail fare, motor transport from Wangaratta to Harrietville and return, accommodation at the bungalow, hire of skis and boots, meals and accommodation en route, and pack-horses for luggage on the journey to and from the bungalow. As accommodation is so strictly limited, bookings will be made in order of application. Early registration is therefore recommended. Any further details may be had on application to Miss Norman, or the manager of the Victorian Government Tourist Bureau (Central 2042).

KING'S BIRTHDAY WEEK-END.

Arrangements have been made to hold a Combined Ranger week-end at Flinders House, Flinders, from June 11th-13th.

The total cost, including transport will be 17/6 per head. Uniform will be worn during the week-end.

N.B.—In order to finalise arrangements, the sub-Committee must have all applications not later than May 25th.

As it may be necessary to limit the number attending the week-end, Company secretaries are asked to send the names of the applicants to the convenor in preferential order. Each application must be accompanied by a deposit of 5/-, balance payable at camp. Notification of withdrawal must reach convenor not later than May 30th, otherwise deposits will not be refunded.

It would simplify matters for the sub-committee if Rangers would state whether there is anyone with whom they wish to room.

As the week-end is being run on a very narrow financial margin Rangers are asked to bring some cake for morning or afternoon tea.

Kit List.—Extra overall, overcoat, extra stockings, toilet necessities, clothes brush, 1 small groundsheet, 2 single sheets, 1 pillowslip, towels, sand shoes, cardigan or woollen jumper, badge and shoe cleaners. Bring your tennis racquets.

It is necessary to make arrangements with the various churches re numbers; therefore will secretaries please state which churches their Companies wish to attend.

Further particulars will be issued at a later date. Meanwhile, watch the papers.

—DEBBIE BRADSHAW, Convenor.

IMPORTANT.**Companies Please Note:**

Up to date only seven Companies have paid 1938 subscriptions of 2/6. Are you one of the guilty?

If so, send your subscription to the treasurer, R. Spillman, 60 Market Street, C.I., immediately.

:O:

EXHIBITION AT DROUIN.

The 2nd annual handicraft exhibition held recently at Drouin was officially opened by the Deputy State Commissioner (Mrs. Faulkner) and was attended also by the District Commissioner (Mrs. Adamson) and members of the Local Association. All entries were of very high standard, and the special prize offered for the best all-round contributor was won by Miss Elma Savage, of Ellinbank.

There were 13 sections, including needlework, knitting, toymaking, basket-weaving, woodwork, art, photography, literary, cookery, preserves, special hobbies, gardening and flower decoration.

The next fixture for the Metropolitan Rangers is a country dance party in July and then a visit to places of interest in August.

**THE MUTUAL STORE**

*features Keen Values
from the Special*

COLLEGE WEAR DEPT.**Girls' Doctor Flannel
SCHOOL BLAZERS**

The ideal Blazer for School or College wear. Super quality Doctor Flannel in Navy. Finished with Silk Ribbon Binding. Specially Priced

21/-

**Tailored Fuji Silk
SKIRT BLOUSES.**

20in. to 27in., 7/11; 30in. to 33in., 8/6; 36in. to 39in., 8/11; 42in. to 45in., 9/11.

THE MUTUAL STORE

Flinders Street Melbourne
LIMITED

ANNUAL REGISTRATIONS.

From 1st July, 1938, registrations will no longer be annual, but will be current throughout the year and enrolment cards obtainable through districts. One has always sympathised with the small Guide or Brownie who was perhaps enrolled the day after the annual forms were filled in and so had to wait almost a year before she received her enrolment card. Now she will pay her 6d. enrolment fee before she is enrolled and will receive her card on the day of her enrolment, provided of course that her Guider remembers to obtain it from the proper quarters! Guiders, for the sake of the young, please remember to order cards when you order Tenderfoot badges.

S. H. IRVING,
State Secretary.

Warrants.—Brown Owl: 2nd Brighton Beach, Miss M. Heseltine. Tawny Owl: 1st Heidelberg, Miss D. Veitch.

Captain.—3rd North Melbourne, Miss F. Martin; 7th Ballarat, Miss R. Jelbart.

Lieutenant.—10th Geelong, Miss N. Joyner.

Registrations.—1st Carisbrook Co., 1st Kiewa Valley Co.

Cancellations and Resignations.—*District Commissioner:* Seymour, Mrs. Boddy. *Brown Owl:* 4th Brighton, Mrs. Lynn; 2nd Brighton Beach, Miss N. Thewlis; 3a Geelong, Miss E. Ferguson; 1st Hamilton, Miss M. Whelan.

Captain.—4th Brighton, Miss M. Lynn; 1st Brighton Beach, Miss O. Smith; 1st Carnegie, Miss M. Bullock; 1st Trafalgar, Miss L. Giblett; 1st Warracknabeal, Miss I. King; 1st Hawthorn Rangers, Miss G. Field.

Disbanded.—Murrumbeena Ranger Co.

Change of Guider.—3a Geelong Pack, B.O. now Miss Jean Rankin; 1st Hampton Pack, B.O. now Miss Hazel Spence.

Correction.—Brown Owl Warrant, Miss H. Johns shown as an issued in April Matilda should have been a cancellation.

:O:

TRAINING CLASSES.

A *Brownie Refresher Course* is being held in response to requests from Brownie Guiders. The Course will begin on Wednesday, 6th July, and will consist of four classes, the subsequent dates being Wednesday, 13th, 20th, and Thursday, 28th July. It is essential that all Guiders should bring sandshoes.

Miss E. L. Lardner will be in charge of the Course, and it would be helpful to her if the names of Guiders who intend coming to the classes were sent to the Training Secretary beforehand.

A *Course of General Guide Training* will begin on Tuesday, 14th June, in charge of Miss G. H. Swinburne.

The above Courses will be held at the Guide Office, 60 Market Street, Melbourne, Classes being at 8 p.m.

Woodcraft Week.—It is proposed to hold a Woodcraft Week in September at the Guide House, under canvas. Further details in next issue.

—E. E. MORAN.

"Be firm of Purpose in all your Ventures, and Remember that the Line of Least Resistance is only taken by those who are born with a Wish-bone and no Back-bone."

:O:

HOWLERS.

A Brownie's grace—"For what we are about to deceive, the Lord Mayor is truly thankful."

Duty to the King: "Not to be Communists," (Communists).

The Law: "Brownies should save up their money and give it to old people."

—P.M.N.

:O:

(Continued from Brownie page.)

their own ties?

Do you ever make up doggerel rhymes to help your Brownies remember things? Such as "St. Andrew's Flag is blue."

If you can't sing in tune, do you write out the tune with the Brownie and Six songs, and give them to the Brownies?

Many of them have pianos at home; the key of G major is the best pitch, starting on D.

—P.M.N.

SCHOOL BLAZERS

Ribbon-bound Blazers in
high-grade flannel,
from 18/11

Blazers Tailored to
Measure

In the best quality Velour
Flannel from 45/-

Snows

John Snow & Co. Pty. Ltd.,
Melbourne, C.1.