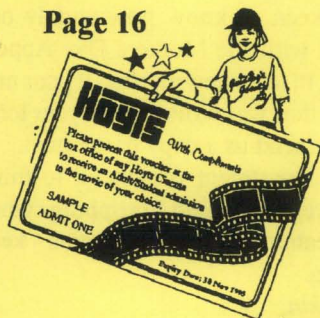


# GIRL GUIDES **Communicating** GIRL GUIDES ASSOCIATION OF VICTORIA

JULY 1995

An insert to Guiding in Australia

Page 16



**A BIG THANK YOU**  
 Page 2

Pages  
6 & 14



**CHANGE  
 AS A  
 CHALLENGE**  
 Page 19

## INSIDE

<b>GENERAL</b>	<b>2</b>
<b>INTERNATIONAL</b>	<b>6</b>
<b>GUMNUT GUIDES</b>	<b>8</b>
<b>BROWNIE GUIDES</b>	<b>8</b>
<b>GUIDE SECTION</b>	<b>9</b>
<b>RANGER SECTION</b>	<b>10</b>
<b>POST BOX</b>	<b>10</b>
<b>GO CLUB</b>	<b>10</b>
<b>PUBLIC RELATIONS</b>	<b>10</b>
<b>PROGRAM</b>	<b>11</b>
<b>TRAINING</b>	<b>12</b>
<b>THE GUIDE SHOP</b>	<b>13</b>

20 RUSSELL STREET MELBOURNE VIC 3000  
 TELEPHONE: (03)9654 7911 FAX: (03)9650 2436

## GENERAL

### THE ROYAL WOMEN'S HOSPITAL MOTHERS DAY APPEAL 13-14 MAY 1995 THANK YOU - \$33,000 raised

On behalf of the patients, staff and Board of Management of the Hospital THANK YOU to all those who contributed to the Appeal Tin Shake this year. To the leaders, advisers, families and friends, who joined in the tin shake, gave donations, coordinated the girls' efforts and liaised with the Hospital, a special thank you.

The support and interest of the State Commissioner, Mrs Heather Barton, executive committee members and staff has been very much appreciated. The Hospital Board of Management function held on 4 May, acknowledged the forming of an ongoing partnership between The Royal Women's Hospital and Girl Guides Victoria.

The exciting launch event on 1 May with television personalities Marie Louise Theile, Rex Hunt and Sam Newman, along with the vigorous media campaign prior to the collection weekend, gave wide exposure to the guides and their involvement in the Mothers Day Appeal.

This annual Appeal provides an excellent public community service opportunity for guides throughout Victoria. At the same time urgently needed funds are raised to support The Royal Women's Hospital's longstanding tradition of quality health care, education and research for women of all ages and the newborn.

Planning for the 1996 Appeal begins soon

and we anticipate that there will be greater opportunities for involvement state wide. Thank you.

*Annette Wood  
The Royal Women's Hospital  
Fundraising Manager*

### LOCAL MEDIA COVERAGE FOR THE TIN SHAKE

We are keen to know how widely our involvement with the Mothers Day Appeal was featured in local newspapers. If your unit or district's effort was written up in your local paper, please send us a copy of the item.

The PR department is grateful to those people who regularly send in clippings when guiding is featured in the local media - keep them coming.

*Kay Rankin  
- Communication Services Adviser*

### GUIDE LINES FOR INSTRUCTORS AND BADGE ASSESSORS

For some time the Association has had guidelines for instructors. These have now been expanded to include badge assessors. If you would like a copy please call or write headquarters and see or ask for Denise.

### CHILD ABUSE AND NEGLECT

Children have the right to be physically and emotionally safe at all times. As the most vulnerable members of our community, children do not have the power to stop abuse.

They rely on others to help them. The responsibility for making sure that children are safe is shared between the family, the community and the state.

As a community based organisation, we have a responsibility to safeguard the children in our care.

It is a sad fact that in recent years the overall number of child abuse cases reported in Victoria has increased. Statistically, we as leaders must be in contact with children who need our help. If you have concerns about a child in your unit, and want to know how to help her, contact either Joan King or Jill Johnstone at headquarters on (03)9654 7911. All enquiries will be treated as confidential.

## "LITTLE WOMEN" PRIZE WINNERS

Congratulations to the prize winners in the national "Little Women" competition.

**Winner:** 1st Morphett Girl Guides NSW

**Runners up:** 1st Wodonga Girl Guides Vic, 3rd Keilor Girl Guides Vic and 1st Belmont Girl Guides WA.

The Girl Guides Association of Australia thanks those who participated and know that the prizes will be fun for all.

We obviously have some budding film makers in our midst thanks to Gillian Armstrong's incentive.

## GUIDE BISCUITS

Many of you will have experienced delays and hiccups in the delivery of biscuits ordered in the March bake ... We apologise for any inconveniences caused, but unfortunately it was out of our hands. This is the first time in over 20 years that we have had such a

problem, so I don't think we can complain too much.

Arnett's had a lot of problems in the manufacturing and packaging process (packets not sealing, machine gobbling up wrappers, wrappers running out so a re-print was necessary - biscuits going "off" resulting in a new lot having to be baked). All things that could happen to anyone in the manufacturing industry. However, at the time of going to print, all seems to be resolved - biscuits HAVE arrived in Melbourne and orders are being despatched forthwith.

I would like to thank those of you who had received biscuits, who were able to juggle things and help out those less fortunate, (I know I lent, borrowed and ferried biscuits all over the place) and I just hope we were able to help those who were DESPARATE!

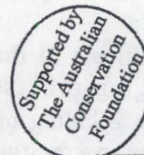
In order to try and prevent similar problems occurring in the future, I urge you all to keep a photocopy of your order form before you send it in.

Also, in future, if you are ordering two-packs of biscuits for a special event, could you please send a photocopy of your order form to me at "Oaklands", 380 Oaklands Road, Oaklands Junction 3063. This will enable me to 'prod' Arnotts as special dates loom, and also to keep a tally of two-packs ordered, as we have to have a minimum of 100 boxes ordered before they will do a run.

Order forms for the NEXT bake are included in this issue. Extra copies will be available at headquarters from reception and the Shop. Please refer to instructions for account names and so forth, as included in April Communicating.

Orders close on FRIDAY 28 JULY, so please make sure YOURS is sent in on time. Biscuits will then be delivered by the end of September, ready for sales in fourth term.

*/continued on page 5*



## OUR WORLD OF WILDLIFE AND ENDANGERED SPECIES

### SPECIAL FUNDRAISING OFFER FOR YOUR GROUP

Dear group leader,

Our World Of Wildlife and Endangered Species collection book and activity packs provides youngsters with a number of wonderful opportunities.

- \* Learn about our wildlife and endangered species.
- \* Have lots of fun by having the chance to **win over 700,000 prizes**, such as, In-Line Skates, Mountain Bikes, Nintendo Game Sets, Timezone Parties, Nintendo Game Boy, Basketball Center Court Portable and lots more.
- \* Take part in various activities in the book, such as, LUCKY DRAW, STICK AND WIN, WILDLIFE PHOTO COMPETITION AND COLOURING.
- \* Special and unique Laminated Cards of rare and endangered species to collect.
- \* Further improve social interaction through the collecting and swapping of stickers.

As a special offer to all girl guide groups, you will receive 20% for all book sales and 25% for all activity packs. **All supplies are sale or return which means this is a no risk fundraiser, whatever you don't sell you can return.**

Each book contains a free activity pack and retails at \$2.00 (price to you, \$1.60). Activity packs are contained in boxes of 100 and retail at \$0.90 cents each (price to you, \$0.675 cents each).

To meet the demands of this collection, we have printed extra copies and would like to extend this special offer to all girl guide groups before stocks run out

Not only will this offer provide extra funds for your group but it will be a vital education resource for your brownie guides or guides.

For further information, please ring Cameron Swale (03)9840 6317 or Kenneth Aruldoss (03)9720 9366.

**HURRY AND DON'T MISS OUT. FILL OUT THE FORM BELOW**

#### ORDER FORM

Date: \_\_\_\_\_  
 Contact Name: \_\_\_\_\_  
 Number of guides: \_\_\_\_\_  
 Telephone No: \_\_\_\_\_  
 Fax No: \_\_\_\_\_  
 Street Address: \_\_\_\_\_  
 \_\_\_\_\_  
 \_\_\_\_\_

I would like to order:  
 \_\_\_\_\_ Wildlife Collection Books  
 \_\_\_\_\_ Activity Packs (100 per box)  
 Authorised Signature: \_\_\_\_\_  
 FAX OR POST TO:  
 Two Americans PTY LTD  
 Suite 2, 322 Mountain Highway  
 Wantirna, Vic. 3152  
 Phone: (03)9720 9366  
 Fax: (03)9720 9336 or (03)9840 6317

**PLAN AHEAD! ORDER NOW** for those festivals and events that occur early in the year, your next delivery won't be before end April 1996. PLEASE NOTE THE NEW SUGGESTED PRICE OF \$2 PER PACKET OR THREE FOR \$5. If you wish to keep your selling price at \$1-60 or \$ 1-70, please do so.

Trefoil guilds and groups who are unable to sell 10 boxes and who cannot make arrangements through a local district, you **MAY ORDER THROUGH ME** - but not at the last minute. However, you must arrange to collect your biscuits at headquarters and pay when you collect them.

Good luck and please ring me (NOT ARNOTT'S) if you have problems.

*Sally Alston (03)9333 1514*

*- Guide Biscuit Co-ordinator*

## A NEW EDUCATIONAL SERVICE FROM GREENPEACE!

Greenpeace Melbourne has a school and community group talks program - entitled GREENSPEAK!

We address large assemblies to small community groups, present workshops, suggest ongoing activities, provide audio visual resources, help with information for projects and will complement your education or information needs.

For information phone (03)9662 9899.

## DEDICATION TO SERVICE GIVEN DURING WORLD WAR II

Through the Australian Remembers Trust, the Iluka Campsite Committee have erected a flagpole to commemorate the service given by members of the guiding Movement, to their country during World War II.

## FLEECE WEAR



That's right! All fleece wear is reduced by 20% at Snowgum stores for one month only.

**IDEAL FOR ALL OUTDOOR ENTHUSIASTS** because fleece fabric absorbs very little moisture, it dries incredibly fast, so you'll stay warm and comfortable.

**GREAT FOR CASUAL WEAR** Choose from budget priced fleece or genuine polartec 200 and 300 fabric. Popular brand names in great fashion colours.

If you're bushwalking, skiing, camping or just enjoying the outdoors this winter, check out the fantastic range of fleece jackets and pullovers at Snowgum!

Offer ends 12/8/95

**BRING THIS COUPON WHEN YOU PURCHASE YOUR FLEECE WEAR FOR A CHANCE TO WIN A \$25 VOUCHER**

Name \_\_\_\_\_

Address \_\_\_\_\_

\_\_\_\_\_ P/code \_\_\_\_\_

### SNOWGUM STORE LOCATIONS



Melbourne 360 Lonsdale St 9670 1177  
 Mitcham 523 Whitehorse Rd 9873 5061  
 Moorabbin 880 Nepean Hwy 9555 7811  
 Hawthorn 644 Glenferrie Rd 9819 4100  
 Sunbury 100 O'Shannesy St 9740 9899  
 Geelong 172 Moorabool (052)21 6618  
 Ballarat 403 Sturt St (053)31 3672  
 Bendigo 79 Mitchell St (054)43 8226

Leaders please feel free to photocopy this for your youth members and parents

The dedication of the flagpole will take place on Sunday 6 August at 1.30pm at Iluka Campsite, Shoreham.

This is an open invitation to all past and present members who served in World War II in whatever capacity to attend.

For information ring Anne Watt (059)775 997.

Anne Watt

Chairman Iluka Committee

## **EARTHKEEPERS**

At last! For the first time ever, small districts can participate in this wonderful program. Later this year there will be two Earthkeepers camps at Donvale which may be attended by a leader and 4-5 girls in grades 5 and 6 from anywhere in the state. They will be combined with similar groups from other places to fill a camp. You may send more than one group so long as each group includes a leader and 4-6 girls in the right age group.

Places will be allocated on a first come, first served basis and there will definitely only be two camps this year.

Camps start at 5.30pm Friday and finish at 5.00pm Sunday. The dates for the camps are: 27-29 October and 3-5 November. Cost \$50.00 per girl, \$15.00 per leader.

For further information see flier on page 14 or contact Program Department at headquarters.

## **LAST CHANCE TO ATTEND**

### **FIESTA**

### **STATE CAMP**

**14-20 JANUARY 1996**

### **BRITANNIA PARK**

We need your applications for this fun filled camp NOW. For more information see June Communicating or contact Gwenda Coulter on (03)9437 1638.

# **INTERNATIONAL**

If you have been waiting for just the right event to apply for - check out these - it might just be listed here!

## **OPERATION LAMINA SERVICE PROJECT - OUR CABANA - MEXICO**

WHEN: 18-30 March, 1996.

WHAT: Building two houses from scratch using corrugated cardboard. Yes, they are to be lived in!

WHO: Members aged 18-25 years at time of event.

COST: Approximately \$4,000.00. The Irene Fairbairn Fund has offered to pay each participant \$200.00 to assist with costs.

Victorian Closing: 12 August, 1995.

Victorian Selection: 19 August, 1995.

## **INTERNATIONAL LEADERS CAMP - SWEDEN plus OUR CHALET SESSION**

WHEN 31 July - 22 August, 1996.

WHAT: Camping, outdoor activities, radio, handicrafts . . .

WHO: Active leaders aged 25+ at the time of the event.

COST: Approximately \$4,500.00.

Victorian Closing: 9 September, 1995

Victorian Selection: 16 September, 1995.

## **CHIBA COUNCIL INTERNATIONAL CAMP '96 - JAPAN**

WHEN: 18-30 July, 1996.

WHAT: International exchanges, horse riding . . .

WHO: Six youth members aged 14-18 years at the time of the event. Two leaders.

COST: Approximately \$2,250.00.

Victorian Closing: 4 November, 1995.

Victorian Selection: 11 November, 1995.

## **DAY OF THE DEAD - ADULT SESSION 1996 - OUR CABANA - MEXICO**

WHEN: 25 October - 11 November, 1996.

WHAT: Session based on the annual Mexican Day of the Dead festival.

WHO: Adult members.

COST: Approximately \$4,500.00.

Victorian Closing: 4 November, 1995.

Victorian Selection: 11 November, 1995.

## **CELEBRATUS XCVI - ENGLAND plus OUR CHALET SESSION**

WHEN: 11 July - 8 August, 1996.

WHAT: Water activities, adventurous activities . . .

WHO: Two leaders. Members aged 18-25 years at the time of the event.

COST: Approximately \$4,500.00.

Victorian Closing: 4 November, 1995.

Victorian Selection: 11 November, 1995.

## **DASH '96 - ENGLAND**

WHEN: 27 July - 20 August, 1996.

WHAT: Medieval theme. Visit Northern England and Scotland.

WHO: Two leaders with camping experience.

Youth members aged 14-18 years at the time of the event.

COST: Approximately \$4,500.00.

Victorian Closing: 4 November, 1995.

Victorian Selection: 11 November, 1995.

## **JABULANI '96 - SOUTH AFRICA**

WHEN: 12-22 July, 1996.

WHAT: Game parks, crafts, historic areas.

WHO: Leader with camping skills. Youth members aged 14-17 years at the time of the event.

COST: Approximately \$3,500.00.

Victorian Closing: 4 November, 1995.

Victorian Selection: 11 November, 1995.

For more information and application forms for all of the above events, please contact your region international representative. She has much more information and can guide you through our new 'slimline' application forms.

The selection days in August and September will commence at 10.00am at 50 Enterprise Drive, Emu Bottom via Sunbury and conclude at approximately 1.00pm.

The November selection day will also commence at 10.00am at a venue to be advised.

*Merran Crowley  
International Adviser*

## Things to make, to take, to giveaway!

This brand new craft book, from the International Department contains over 80 pages of easy to make Australian crafts.

At \$9.00 including postage and handling it makes one of the most inexpensive activity books around.

Contact Kaye at the International Department (03)9654 7911 to reserve your copy.

## GUMNUT GUIDE SECTION

Good news! Just arrived in the Guide Shop is the latest Rae Ganim polo shirt - in very attractive, flattering pink. The original request for a pink top came from Victoria, and now it is here.

Also new is the booklet "Action IDEAS" which is available from the Guide Shop for \$4.00. It is the compilation of the gumnut guide programs printed in GiA in 1994 with extra ideas and songs.

These are programs that really work.

For more program suggestions do think about going to the "Program Ideas For Gumnut Guide Leaders" training to be held at East Bentleigh on Saturday 30 September.

## HAVE YOU TRIED . . .

### JET BOATS

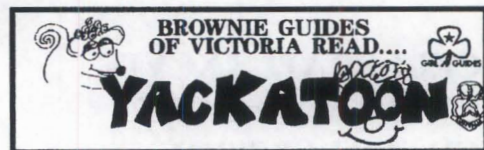
1. Cut a milk carton in half, lengthwise.
2. Make a small hole in the bottom end and put the neck of a balloon through it. The balloon sits in the carton.
3. Tape the balloon neck securely in place.
4. Blow up the balloon and let the boat go into the water - in a baby bath or shallow play pool.

## BROWNIE GUIDE SECTION

### WHAT ARE YOU DOING?

Save the Koala Day is coming up on 26 July. What are you doing for this day?

*Debbie McLaren*



Leaders:

Please accept my sincere apologies for the late arrival of the Autumn issue of YACKATOON. This was due to my non-acceptance of the first print-out of the issue.

As you know the theme for the Winter issue is "At the Bottom of the Garden - Fairies". I am certain that many pack holidays had themes similar to this, so please encourage your girls to start writing (ages of the writer, please).

I have heard of a pack that held a "Fairies

Meeting" last year and have seen their photos, so would the leader of the unit concerned please send some of those photos and maybe the story describing that meeting.

Lorraine Armstrong

## GUIDE SECTION

### BADGES, EMBLEMS AND PENNANTS

As a reprint of this book is not planned in the near future please ensure the books and cards are amended to read:

- a. Add to qualifications for assessing **Camp Cooking and Camp Skills** "or be an experienced certificate holder" (Guide Section)
- b. Reword Section 5 of **Camp Skills** to read "Make a useful camp gadget using a variety of knots and lashings".
- c. Reword **Radio Communications badge** as below:  
*Clause 3: Know at least 10 of the special signals used in Communication (Q Code) and know the two international emergency signals.*  
*Clause 5: The word "light" to be changed to "sight".*  
*Clause 7: Understand . . . prefix. Know the prefix for each Australian State and Territory and 4 overseas countries of your choice.*

These changes will now bring the Radio Communications Badge into line with the

Spectrum Management Agency (the Commonwealth Agency for Communications) and the Amateur Radio Guidelines.

Rhonda Cooper - Guide Adviser

## HAIR MODELS REQUIRED FOR IN HOUSE WORKSHOPS

Colour and perm models are required for seminars and workshops.

Day and evening sessions are available.

For consultation



### Schwarzkopf

1133 Malvern Road  
Malvern 3144

Phone: Jenny Eyre  
(03)9822 2591 10.30am - 4.00pm

## SOOTHING SESSIONS

Guide leaders, we have planned a beautiful day out for you. SOOTHING SESSIONS will be the opportunity for you to spoil yourself, banish stress and relieve tension. See full page advertisement in the June edition of Communicating for the complete details and application form.

## RANGER SECTION

### DATES FOR YOUR DIARY

**CONFERENCE** - 5 August. Lots happening, lots to discuss and decide about. Information in June Circular.

**SKI WEEKEND** - 1-3 September. (Note change of date). Details in June Circular.

**CAVING WEEKEND** - 1-3 September. Details in June Circular.

**PASSPORT TO THE MOVIES** - 1-3 September. Details in April Circular.

**RYLAH PENNANT** - 22-24 September. A challenge and a test of your outdoor skills in a mystery location! Details in June Circular.

## POST BOX

As this is my last opportunity to promote Post Box, I would like to thank you all for your interest and co-operation over the past five years.

Welcome to Margaret McNeill, 10 Sturt Street, Shepparton 3630, who has been appointed Post Box Secretary from 1 July 1995.

Please keep Margaret busy with your requests for penfriends.

*Shalom*

*Margaret Rookes*

*Post Box Secretary*

## GO CLUB

### TREASURY BUILDING TOUR

Tuesday 29 August. Meeting outside of Treasury Building at 1.15pm. Gold vaults and exhibition tour. Cost \$5.00 per adult or \$3.00 concession. Bookings essential. Contact Pauline Spurgeon on (03)9857 6918 by Sunday 20 August.

## PUBLIC RELATIONS

### FORTHCOMING ROYAL MELBOURNE SHOW

Plans are well under way for our involvement in the show this year. The dates are Thursday 21 September to Sunday 1 October. All regions participating will now have been notified of their day and time. If you would like to participate and your region has not been allocated a day, please get in touch with us and we will find a time and day for you.

This year's Government Pavilion theme is "The Future", they must have heard about our 'FORward with FUNdamentals'! Emphasis in the pavilion will be on interactive activities. Amongst our activities will be large scale floor games.

## IT'S GIRL GUIDES

Two large banners used on the portico of the Melbourne Town Hall for 'Brunch with the Bunch' are now available for loan from the PR Department. The banners are navy with a huge half trefoil in white and the words "It's adventure, it's friendship and it's fun . . . it's Girl Guides".

## SPREADING THE GOOD NEWS ABOUT GUIDING

Heather Barton dived into diversity with a appearance on a Bahai Faith program on Southern Eastern Regional radio, spreading the good news about guiding and the opportunities it opens up for women and girls of all nationalities and religions.

## PROGRAM

### BASIC POTTERY COURSE

\* Are you interested in gaining basic potting skills?

\* Can you already pot but would like to learn to operate the new pottery kiln at Britannia Park?

\* Would you like to share basic pottery activities with children?

If you can answer 'yes' to at least one of these questions, sign up at once for the following pottery workshop.

DATE: From Friday 4 August (evening) to Sunday 6 August 1995.

LOCATION: Broadhurst Lodge, Britannia Park, Yarra Junction.

COST: \$25.00 per participant.

The workshop will be conducted by Kris Bernard Urrutia, an experienced potter with a Bachelors and Masters degree in Fine Arts - Ceramics.

Apply using a VISA activities/workshop application form, enclosing workshop fee and one business sized self addressed envelope to Program Dept, 20 Russell Street, Melbourne Vic 3000. Applications close 14 July, 1995. For further particulars, see May Communicating or contact the Program Department.

## YOUTH '95

**Monday 23 October to Friday 27 October 1995**

Girl Guides Victoria, the Barbara Collie Trust and Rotary International are offering a dynamic five day residential workshop on personal development which will enhance employment opportunities.

Look in August Communicating for more information.

## RADIO ACTIVITIES

Congratulations to Christine Shields of Glenroy and Christine Zabakly of Sydenham on completing your Radio Communications Badges at "Adventure '95". Well done girls.

Check list for JOTA.

It is time to invite a radio club member or your operator to visit the unit and introduce the girls to basic radio communications - the amateur services - use of microphones - Q code and phonetics - station log, QSL cards - call signs and frequencies - UTC time and world time zones. Enjoy your operators visit.

Any enquiries, send a business size self addressed envelope to Mrs A Watson, 79 East Road, Seaford 3198.

*Anne Watson*

*- Radio Activities Coordinator*

## TRAINING

### REFRESHER WORKSHOP - Brownie Section

Sunday 27 August, 9.30am to 4.00pm.  
Note: Program will include brownie action singing games plus your requests. Apply with \$15.00 and stamped self addressed envelope to the Training Department at guide headquarters prior to 27 July.

### CHANGE IN DATES

#### FIRST AID PREVENTIONS AND PRECAUTIONS

Will now be held at Hamilton on Saturday, 16 September from 9.30am to 4.00pm.

#### ALTERNATIVE COOKING

Will now be held at Stawell on Sunday 17 September from 9.30am to 4.00pm.

Full details for these two courses can be found in the 1995 Training Calendar.

## TREFOIL GUILD

24 Hour Gathering Portland - all Guild Secretaries will have received an application form for this gathering - accommodation is for 100 only.

ANNUAL GENERAL MEETING - Victorian Trefoil Guild - 12 July. Have you sent in your numbers yet?

Items for discussion will be - Date and venue for 1996 AGM. Affiliated membershi

#### 1995 GATHERING - PERTH

Australian Gathering 1995 - Fellowship of former scouts and guides being held in Gympie October 1995 - I would like to hear from Victorian members who have applied to attend.

A new stock of cards and the 1995 Christmas Calendar cards have arrived. Price lists and order forms are available from the trefoil guild adviser.

*Shirley Reeves*

*Trefoil Guild Adviser*

## GUIDE BISCUIT PRICE

Please note the new suggested price of \$2.00 per packet, or three for \$5.00 (WA sells all their guide biscuits for \$2.00). However, if you prefer to keep your selling price at \$1.60 or \$1.70, please do so.

# UNIFORM SALE

**Great news** for leaders and youth members!

The Guide Shop is getting ready to stock take and to help clear the shelves, we have some fantastic bargains on uniform items.

		RRP	SPECIAL
Girls shirts	sizes 6-12	\$22.00	<b>\$15.00</b>
	sizes 14-24	\$32.00	<b>\$15.00</b>
Leaders skirts	sizes 8.26	\$45.00	<b>\$25.00</b>
Leaders blazers	sizes 12-26	\$55.00	<b>\$29.00</b>

So, come on in and save yourself some money with these great specials.

Limited stocks so be quick!

MAIL ORDERS WELCOME

**THE GUIDE SHOP**

20 Russell St Melbourne

Phone (03)9654 7911

Fax (03)9650 2436

**GIRL GUIDES**

# EARTHKEEPERS



*Earthkeepers is the name of a program for children in grades 5 and 6, developed by the Institute for Earth Education. The Girl Guides Association of Victoria has been running Earthkeepers camps at Camp Carnegie, Donvale, since January 1990, and taking the program out to country regions as Mobile Earthkeepers since 1993.*

The program itself is concerned with putting children in touch with the natural world and teaching them some basic ecological concepts. This is done with a liberal sprinkling of magic through a series of 'secrets and surprises'.

Because there is a follow-up component to the program, it is essential that the leaders who accompany the girls to camp have some contact with them afterwards. These leaders, known as Guardians, encourage the girls to complete the tasks they pledge to do before leaving camp and provide them with access to the last of the 'secrets and surprises'. These factors have to be taken into account when groups apply to take part in the program.

The program runs from 6.00pm Friday to 5.00pm Sunday and caters for 15-24 girls with 3-5 leaders.

Cost at Donvale:                   \$50.00 per girl  
  \$15.00 per leader

The camp fee paid by participants includes campsite fees, all meals, all pre-camp information, program materials such as training manual, diaries, 'surprises', and completion certificate.

Cost in country regions:       \$30.00 per girl  
  \$10.00 per leader

This fee includes transport of program leaders and props, all precamp information and program materials such as training manuals, diaries, 'surprises' and completion certificate. Cost of food and accommodation fees are borne by the host group.

Participation in the **Earthkeepers** program is a most rewarding experience for all concerned. Groups who have already taken part in the program have found it is a tremendous linking activity because it involves older brownies and young guides.

All enquiries about **Earthkeepers** should be directed to the Program Department at guide headquarters, phone (03) 654 7911 or fax (03) 650 2436.



All those who have received the Queen's Guide award in Victoria in the 49 years since 1946 are invited to a very special gathering. Take the opportunity to renew old friendships and network with other achievers at the:

## QUEEN'S GUIDE REUNION

to be held in the beautiful grounds of

### GOVERNMENT HOUSE

Government House Drive, Melbourne

DATE: Saturday 14 October 1995  
TIME: 2.00PM to 4.00PM  
COST: \$20.00 (includes delicious afternoon tea and quality bone china souvenir mug)  
DRESS: Daywear  
PARKING: Ample space in the grounds/surrounding streets

Please reply by 10 September 1995

(chques to be made payable to: Girl Guides Association of Victoria)

---

### QUEEN'S GUIDE REUNION

14 October 1995

Name (current).....

Name when award was received.....

Address.....

.....

.....

Phone number/s.....

Date awarded.....

Unit.....

Active in Guiding  Scouting

I enclose payment of \$20.00 by: Cheque/Money Order

Send to: Queen's Guide Reunion, girl Guides Association of Victoria,  
20 Russel Street, Melbourne Vic 3000

QUESTIONS ABOUT THE ASSOCIATION

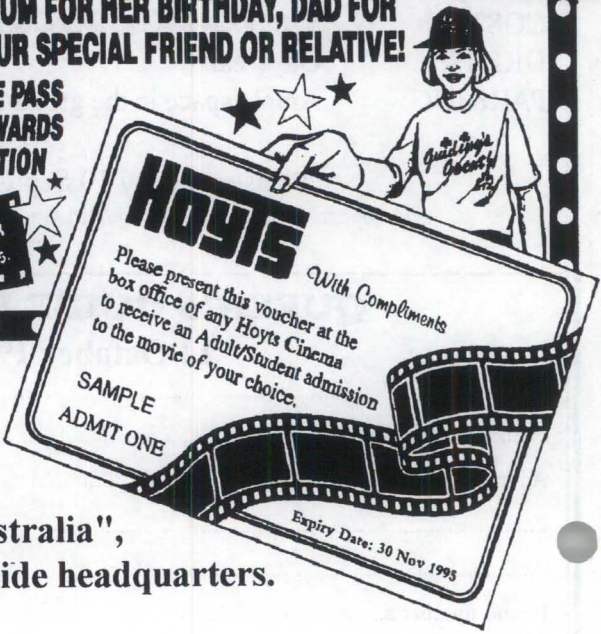
to obtain a copy of the Association's

**NOW THE GIRL GUIDES CAN GET YOU INTO THE MOVIES.**

**...OR YOUR MUM FOR HER BIRTHDAY, DAD FOR FATHERS DAY OR YOUR SPECIAL FRIEND OR RELATIVE!**

**AND \$2.50 FROM EACH MOVIE PASS YOU PURCHASE WILL GO TOWARDS SUPPORTING THE ASSOCIATION**

**FULL PRICED STUDENT ADULT TICKET FOR ANY HOYTS SESSION. VALID TO 30 NOV 1995.**



**Here's How!**

Use the order form that was an insert in June's "Guiding in Australia", or pick one up from guide headquarters.

# GUIDING IN AUSTRALIA

**SUBSCRIPTION FORM - Please return to National Headquarters,  
Girl Guides Association of Australia,  
PO Box 6, Strawberry Hills, NSW 2012**

Please note there are no issues for December or January.

Please supply GiA to \_\_\_\_\_  
(Div. Commissioner/District Leader/Leader/Asst. Leader/Girl Guides Support Group  
Member/Trefoil Guild/Other)

ADDRESS: \_\_\_\_\_  
\_\_\_\_\_ Postcode: \_\_\_\_\_

TELEPHONE NO: \_\_\_\_\_

DIVISION: \_\_\_\_\_

DISTRICT: \_\_\_\_\_

UNIT: \_\_\_\_\_  
Gumnut Guide/Brownie Guide/Guide/Ranger Guide/Ranger

I enclose the sum of \$25.80 \_\_\_\_\_  
(signature) (date)

Make cheque payable to Girl Guides Association of Australia

GiA subscriptions are a legitimate unit expense

\*\*\*\*FOR NEW SUBSCRIBERS ONLY\*\*\*\*

# FREE GUIDE ADVERTISING PAGE

## scienceworks

### Voluntary Workers Needed

Scienceworks, the Museum's centre for science and technology currently has positions which require voluntary assistance. Induction Sessions and specific training is provided as well as social events and field trips.

These vacancies include a number of positions that involve work with Scienceworks' visitors and staff:

- \* EXPLAINER
- \* HOST
- \* GUIDE
- \* DEMONSTRATOR
- \* ACTIVITIES LEADER
- \* ARENA ASSISTANT
- \* CURATORIAL ASSISTANT
- \* WORKSHOP ASSISTANT
- \* SPECIAL PROJECTS

Information sessions are normally held every three months. The next date is Sunday 20 August from 2.00pm to 5.00pm.

All enquiries to Wendy Duffy,  
Volunteer Co-ordinator  
(03)9392 4824

## WANTED!

## 200 EMPTY

## 4 LITRE

## CARDBOARD

## WINECASKS !!!

### OR MORE???

No! The resource centre committee isn't going to have a wine tasting on the dregs!

We desperately need the cardboard outers to assist in the filing and storage of books in the resource centre.

They may be left at headquarters marked to the attention of Betty DeMarchi, or ring Betty DeMarchi (03)9808 5870 or Marguerite Pritchard (03)9592 3708 to arrange a suitable drop off/collection point.

Betty DeMarchi - Chairman

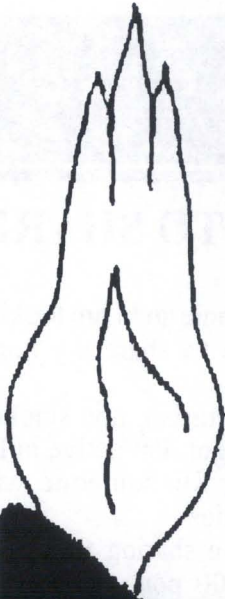
## BURTONS CAMPSITE IN THE BEAUTIFUL OTWAYS

Friends of Burtons Campsite, located 15km south of Colac on the road to Gellibrand, welcome enquiries from potential campers.

The campsite has ridge pole tents adequate for up to 18 people, cooking utensils, gas hot plate, lamps and a hut to shelter 4-5 people in an emergency.

Burtons Campsite is close to many scenic attractions in the Otway Ranges and along the Great Ocean Road.

Contact Carolyn Weston on (052)31 2011 for full details, costs and to make a booking.



# "CHANGE AS A CHALLENGE"

ALL DISTRICT LEADERS AND  
COMMISSIONERS ARE INVITED TO  
ATTEND THE CONFERENCE.

**8-10 SEPTEMBER 1995**

At Campaspe Downs, Kyneton.

To guarantee your choice of accommodation  
return your application forms promptly.

If you are a newly appointed district leader or  
commissioner and have not received your  
invitation, please contact - Di Stones on  
(052)55 2052.



# FREE GUIDE ADVERTISING PAGE

## **ENJOY Pack Holidays Camping IN THE BUSH at TYNONG NORTH**

DATES AVAILABLE for 1995 for:  
"ALCHERINGA" - holiday house for  
30, \$5.00 per person per 24 hours  
"STUART'S GLEN CAMPSITE" - \$3.00  
per person per 24 hours

BUSHI BIRDSI FLOWERSI

Bookings - June Couper  
(03)9802 1730

SE and SM Regions Campsite.

## **HOME TO SHARE**

Hi, I'm Jennie and I am looking for someone to share my home with.

I'm a vegetarian, non smoker/drinker/drugger. I'm active in life and looking for someone with similar qualities.

We will be sharing the bills, it will be \$70.00 per week with a bond of \$200.00.

If you'd like to live in Kalorama with beautiful views and the above interests you, please call me on (03)9720 8121.

Look forward to speaking with you.

Jennie

## **GUIDING REUNION**

60 years of guiding reunion for past members of Chelsea and Edithvale units.

Sunday 27 August at the Chelsea Town Hall, Station Street, Chelsea (opposite Chelsea station) from 1.30pm to 4.30pm.

For more information contact Kay Searle on (03)9773 4035 AH or send stamped self addressed envelope to Kay Searle at 31 Whatley Street, Carrum Vic 3197

## CAMPSITE BOOKINGS - Sites still available for 1995

The following dates are still available. If you haven't booked your next indoor camp yet, phone the properties booking secretary on 03 9654 7911 - they're filling up fast. Remember, the campsites are also available to non-guiding groups, families and friends.

### Britannia Park

#### **Brownie Cottage 24 beds**

July 14 - 16, 21 - 23, 28 - 30  
August 4 - 6  
November 3 - 5  
December 15 - 17

#### **Guide House 28 beds**

November 3 - 5  
December 14 - 17

#### **Broadhurst Lodge 35 beds**

July 21 - 23  
December 14 - 17

#### **Thankyou Chalet 8 beds Adults only**

July 14 - 16  
November 3 - 5  
December 1 - 3, 8 - 10, 15-17

### Iluka

#### **Warrawong 50 beds**

July 28 - 30  
August 4 - 6  
September 8 - 10  
December 15 - 17

#### **Aulua 30 beds**

December 15 - 17

### Tapestry

#### **The House 8 beds**

July 7 - 9, 14 - 16  
August 4 - 6, 11 - 13, 25 - 27  
September 1 - 3, 15 - 17, 22 - 24  
October/November/December every weekend!

#### **Panda Hut 8 beds**

July 7 - 9, 14 - 16,  
21 - 22, 28 - 30  
August 4 - 6, 11 - 12, 25 - 27  
September 1 - 3, 15 - 17, 22 - 24  
October/November/December every weekend!

There are also many campsites available at Britannia Park, Iluka, Donvale and Tapestry throughout the rest of the year. Please note that only definite bookings can be made and that if a camp is cancelled deposits are not refundable unless the site is rebooked.

## INDOOR AND OUTDOOR CAMPSITES IN VICTORIA

This informative booklet is now available from the Guide Shop. It contains details of over thirty state and regional Guide and Scout camps in Victoria: location, accomodation, equipment, activities and a contact name and phone number. Whichever area you live in or wherever you want to go, you'll find a campsite to suit your needs.

At only **\$2.00** it is a must for every district or unit.

The new edition of the Camping Association's "Where to Camp" book will also be available soon.

# FREE GUIDE ADVERTISING PAGE

The 31st Camberwell

SHOWTIME

Presents

## THE TRAMS ARE BAD TODAY

Only NINE performances.

Opening Friday 4 August at 8.00pm.

Saturday 5 August at 2.00pm and  
8.00pm.

Monday 7 August at 7.30pm.

Tuesday 8 August at 7.30pm.

Thursday 10 August at 8.00pm.

Friday 11 August at 8.00pm and

Saturday 12 August 2.00pm and  
8.00pm.

VENUE: PHOENIX THEATRE  
DEAKIN UNIVERSITY  
BURWOOD HWY. BURWOOD

PHONE BOOKINGS  
(03)9817 3253

HUME REGION GIRL GUIDES

VICTORIA

25TH ANNIVERSARY

YEAR

REUNION AT

AVENEL

R.S.L. HALL.

Sunday 12 November

11.00am to 3.00pm

Bring photos, memorabilia.

Please bring a plate of finger food  
for lunch.

All ex brownie guides, guides,  
rangers, leaders, lones, local  
association members, trefoil guild  
members, commissioners and  
present adult members of the  
Hume Region.

ALL WELCOME

For further information contact

Bev Close (057)775 536 or

Gillian Jacobs (057)962 388

## VicCycle for Cancer

**A fundraising venture for the Peter MacCallum Cancer Institute.**

I am a guide leader in Box Hill, currently completing my Duke of Edinburgh  
Award at Gold Standard. For my service section I am organising a 1000km  
(approximately) bike ride for the

Peter MacCallum Cancer Institute in March 1996.

**I NEED YOUR HELP!!!!**

Are you able to help with the organisation, or fundraising? Do YOU want to ride?  
or help support? For more information, please call Narelle Nancarrow on  
(03)9887 1178 or Janis Elliott on (03)9890 6719.

# ☀ GUIDE BISCUITS ☀

Attention all Commissioners, District Leaders, Leaders, Support Groups, Trefoll Guilds, etc...

## IT'S GUIDE BISCUIT TIME AGAIN!!

The 2nd bake for 1995 is fast approaching. As well as our "regular" Guide biscuits, our new "Half Coated Choc Guide Biscuits" will be available again. We also have our new line of 2 Pack PLAIN Biscuits — 2 plain biscuits individually packed in a cellophane bag — These are ideal for sale to bowling and other sporting groups, hospitals, local businesses, councils, etc., and a wonderful promotional tool. Cost is \$11.01 per box of 100 packets . . . Recommended Sale Price is \$15 per Box. These **MUST** be sold by the box and **NOT** by the single packets due to marketing laws.

If you are ordering 2 packs, please send me a copy of your order. In order to ensure we get enough to cover the minimum order required.

To make marketing easier, the choc coated biscuits are packed in 200 gm packets — regulars are 250 gm — but both will cost the same, so you can sell **ALL GUIDE BISCUITS AT THE SAME PRICE**. I.e. \$1.60 or up to \$1.70 per pkt.

There are still 20 packets of biscuits per carton, and minimum orders will remain at 10 cartons. (You may have a combination of choc and regular and 2-packs to make 10 cartons.)

All Biscuits have a 6 month use by date, but keep well for a lot longer than this.

**PLEASE NOTE:** Biscuits can **NO LONGER** be collected at Arnott's. This service is no longer available, so you **MUST** order and collect through a local district or group.

## ORDERS FOR BOTH BISCUITS CLOSE: FRIDAY, 28th JULY, 1995

...and stock should be delivered within 7 to 8 weeks of orders closing. As the biscuits are now baked interstate, the whole process takes longer, however, you **MAY** receive your order in less than 6 weeks, depending on stocks available. Therefore, the earlier you send in your order, the earlier you should receive your biscuits.

If you have a Special Event for which you require Biscuits, **mark your order clearly** with the date, but allow 7 to 8 weeks for delivery. **DO** try and promote biscuits in your area, and **TAKE COURAGE**, be **AMBITIOUS**, and order **PLENTY**, as most bakes stocks run out very early, and many people are disappointed.

If you are ordering for a Special Event, please send me a photocopy of your order form so I can give 'prod' to Arnott's in plenty of time.

Once again, Headquarters **WILL NOT** and **CANNOT** hold stock for you to draw on, so you **MUST** order plenty locally. (If a Trefoll Guild or Group needs a small quantity of biscuits and cannot tie in with a local district, they may order through me. . . not at the last minute. . . However, for this privilege, biscuits must be paid for when they are collected from headquarters.)

A fair guide as to what to order is to work out what you think you can sell, and then **DOUBLE IT** — you'll find that you'll have no trouble selling them all. And **REMEMBER**. . . it helps YOU financially, but it also Promotes Guiding in your area at the same time . . . **AND** they're really nice biscuits!

*If you have any queries or problems, please ring me, **NOT** Arnott's.*

*Good luck & happy biscuiting.*

Sally Alston, Guide Biscuit Co-ordinator. Ph: (03) 9333 1514

**ARNOTT'S BISCUITS LIMITED**  
**★ GIRL GUIDE BISCUITS ★**  
**ORDER FORM — VICTORIA**

**CLOSING DATE FOR ORDERS: FRIDAY 28th JULY, 1995**

**PLEASE PRINT CLEARLY.**

Customer No. (on your last invoice):..... Date:.....  
*(If you don't know your Customer Number, please ring me on 333 1514 for assistance.)*

**WORDING MUST BE EXACTLY THE SAME AS PREVIOUS ORDERS.**

Account to be charged to (District/Division/Region/Trefoil Guild).....

*If you have a special event or show, you must order early and mark CLEARLY the date required. You must allow 7 to 8 weeks for delivery.*

Mr/ Mrs/ Ms/ Miss:..... **DATE REQUIRED:**.....

Address:.....

Postcode.....

**NOTE:** Cost price per case is \$21.84 (approx. \$1.09 per packet), incl. 12% sales tax.  
 Cost price per case of 2 packs is \$11.01, including 12% sales tax.  
 Recommended Selling Price is \$2.00 per Pkt. or 3 Pkts for \$5.00  
 Recommended Selling Price is \$15.00 per CASE of 2 Packs.

**PAYMENT IS  
 NETT 30 DAYS.**

Number of REGULAR GUIDE BISCUIT cases required:..... (20 X 250 gm pks each case)

Number of HALF COATED CHOC BISCUIT cases required:..... (20 X 200 gm pks each case)

Number of 2 PACK PLAIN BISCUIT cases required:..... (100 X 2 biscuits each case)

TOTAL CASES.....

**MINIMUM DELIVERY ORDER IS TEN (10) CASES**, which may include a combination of Plain, Choc & 2-Pack of biscuit. (Smaller orders can **NO LONGER** be picked up at Arnott's. This service is no longer available. Biscuits **MUST** be ordered and collected through a local district, group, etc.

**DELIVERY INSTRUCTIONS**

**DATE REQUIRED FOR SPECIAL EVENTS, SHOWS, ETC.**.....  
*(\*Allow at least 7 to 8 weeks for delivery.) (DELIVERY AT NO COST TO YOU!)*

ATTENTION: Mr/ Mrs/ Ms/ Miss:.....

Address:.....

Postcode.....

Phone number for contact: Area Code (.....) .....

**NOTE:** Please indicate exact address for delivery. Not RMB, PO Box Number, as all deliveries have to be signed for.

**PLEASE RETURN THIS ORDER FORM TO:**

Miss Gabriella Trevisan, Sales Department, Arnott's Biscuits Limited, 53 Huntingdale Road, BURWOOD VIC 3126  
 Telephone: (03) 805 1305 Facsimile: (03) 88 88 305

**DAMAGED STOCK:** Claims for stock received in poor condition should be notified to Miss Gabriella Trevisan by Phone **AND** in Writing within 24 hours of receipt of goods.