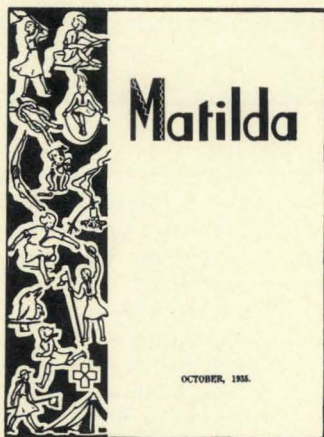


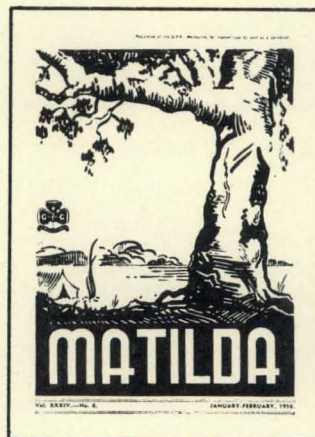
MATILDA



JULY '23



1935



1956

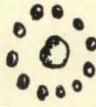
JULY '72



JULY, 1972

VOLUME 50

NUMBER 1



LADY REID

Medal of Merit and the Emu Award

We are all sad to hear of the death of Beatrix Waring Reid, whom so many of us have known and loved for many, many years. Bix, as we affectionately called her, was a wonderful friend to us all and to the Movement — as Guider, Commissioner and member of both the Victorian Council and Executive and, until some years ago, Con- venger of the Property Sub-Committee. Although the work was both arduous and time consuming, it was given with much pleasure.

Despite her busy private life, profession, the Children's Court and many other inter- ests Bix always found time for Guiding. At all times, whenever necessary, Bix was pleased to aid us wisely through many varied situations. She drafted THE first Constitu-

tion for Victoria and was very much involved with the work relating to our Act of Parlia- ment.

About two years ago, after a serious illness, she was persuaded by her medical adviser to retire from all her interests, so we had to farewell her from the Council. Bix was sad and so were we, and it was then she was presented with the Emu Award for her great service to the Movement. From then on her illness did not improve and, in spite of spells in hospital, she was always bright, utterly kind and fun, belittling her illness, and terribly brave.

Bix has now gone home — we shall miss her, but have very happy memories. Thank you Bix and God Bless You. Our deepest sympathy goes out to her husband, daughter Sophie and family.

SHOREHAM CAMPSITE . . .

Special message to all members of the Movement from Mrs. J. A. Hutchinson, Assis- tant State Commissioner.

You have all heard by now of our pur- chase of a lovely campsite at Shoreham — it is truly a beautiful spot within easy distance of the beach. The demands for camping are very heavy, and we feel this new site will ful- fil a great need, and offer a pleasant contrast of camping surroundings.

Mrs. Squire, our Camping Adviser, has asked me if I would lead a committee for raising funds to develop this new area — we shall need an access road, drainage, equip- ment buildings, ablution blocks, etc., before **you** can enjoy a lovely camp by the sea — so I am **asking you all** to join my "Watch Shoreham Grow" Committee! Will YOU help me?

Mrs. Renshaw Jones, our State Commis- sioner, had the bright idea of a Spring Garden Stall at Headquarters for this project, but I should like to include everyone in Vic- toria, and ask each Brownie, Guide and Ranger Unit if they would also like to ar- range a Spring Garden Stall in their own area to assist. A few packets of seeds or

cuttings planted now would not cost very much, but, when you sell the seedlings and plants you have grown **so** carefully to your parents, relatives or neighbours, you would all around you (or maybe eating your own home-grown vegetables), you would be help- ing to develop Shoreham at the same time as you would send your contributions to the Camping Department at Guide Headquarters, 20 Russell Street, Melbourne. We want you to be able to camp at Shoreham **as soon as possible**, so would you like to start "sowing and growing" now please?

I am sure Local Associations and Trefoil Guilds in all areas would also like to help the girls in this "Watch Shoreham Grow" project, and may I take this opportunity of thanking all those who participated in the Tennis Day held in April. We had a very happy day in glorious sunshine, and the \$162 raised on the day will pay for quite a quantity of screening to start our access road, so perhaps we can have an "Annual Tennis Day" — all over Victoria — what do you think of the idea?

For the benefit of all our girls, do help me "Watch Shoreham Grow!"

—Della Hutchinson

MATILDA

Editor: MISS MARGARET SHAW

PUBLISHED BY THE GIRL GUIDES' ASSOCIATION OF VICTORIA
20 RUSSELL STREET, MELBOURNE, VICTORIA, AUSTRALIA, 3000

State Commissioner: MRS. R. RENSHAW JONES • State Secretary: MISS B. MACARTNEY

Assistant State Commissioners:

MISS MARGARET SHAW • MRS. J. M. KIRKMAN • MRS. J. A. HUTCHINSON

21st WORLD CONFERENCE—CANADA 13th to 23rd June, 1972

Most exciting day — rushed from breakfast at 7.30 a.m. to take a cable from the Australian Delegation—

“Our Chief headed poll for World Committee.”

Although it was not unexpected it is a thrill that Mrs. Price has topped the poll. We are cabling congratulations.

Today also, the first of the letters from the Delegation.

Best wishes,

Lillian Mitchell, Australian Secretary

Tuesday, 13th June, 1972

Dear Everyone,

One hardly knows where to begin. Yesterday all those attending the Conference arrived and began to settle in and find their way about this lovely new university on the outskirts of Toronto. Several of the buildings are connected by hallways and one has to make many turns, go up and down stairs and lifts in order to get to our living quarters from the eating area and the Conference room is some little distance away in yet another building and we need to allow at least quarter hour to find our way there. However all is made easier by a series of coloured arrows on the floor and walls.

Today has been truly exciting. So many different uniforms, new faces and much renewing of old friends and acquaintances. People are popping up everywhere and one realises again and again just how small the world really is in Guiding. Our Joyce is of course much in demand and we as Australians are very proud of the delightful comments to us in her praise.

Tonight we have had the official opening — a simple but impressive ceremony with some very telling pieces of wisdom given by the Governor-General of Canada, His Excellency, the Right Hon. Ronald Michener, C.C.C.D. and his charming and talented wife, C.C., Ph.D.

Our long walk to the Auditorium was lined with happy smiling Brownies, Guides, and Rangers from Toronto area, many of whom we were able to chat to and some seemed surprised that we had come so far — all the way from Australia! It has truly been a wonderful but busy day and we are all happily looking forward to the business items with a warmth of friendship which we know exists.

—Margaret Coleman

Wednesday, 14th June, 1972

Dear Everyone,

Yesterday Margaret told you of the official opening of this, the 21st World Conference and of our orientation. After Joyce opened the Conference at 09.00 we had several

(To page 4)

COMING EVENTS AT OUR CHALET

WINTER SEASON 1972-1973 22nd DECEMBER - 17th MARCH

14th - 27th January
4th - 17th March

International Skiing Holiday
(Headquarters' Parties)
Friends of Our Chalet Skiing and
Touring Weeks

EASTER SUMMER SEASON 1973

1. 3rd - 14th June
2. 17th - 28th June
3. 1st - 12th July

11th - 25th APRIL 3rd JUNE - 4th OCTOBER

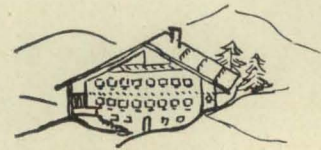
Whitsun — Trefoil Guilds

4. 15th - 26th July
5. 29th July - 9th August
6. 12th - 23rd August
7. 26th August - 6th September
8. 9th - 20th September
9. 23rd September - 4th October

Joint Girl Guide Boy Scout Mountain
Walking and Climbing Session for
Beginners

Advanced Mountain Walking and
Climbing Session

Mountain Walking and Climbing Session
for Beginners
Friends of Our Chalet Session
Headquarters' Parties



Applications should be made to the Guider-in-Charge.

For the winter season applications will be considered from 1st August, 1972.

For the summer season applications will be considered from 1st October, 1972.

Preference will be given to applications for a whole period. Applications can be made for part of a period, but not between one period and the next.

Summer periods 2, 3, 4, 5, 6 are only open to active members of Girl Guide and Girl Scout Associations. The winter season from 10th January to 17th March and the summer periods 1, 7, 8, 9 are open to all members of National Associations past and present.

All sessions, with the exception of the Joint Girl Guide/Boy Scout Mountain Walking and Climbing Session are open for application by groups or individuals.

The above mentioned events will only take part of the accommodation available.

Groups and individuals who wish to spend an ordinary holiday session at Our Chalet are always welcome.

Further information available from International Adviser, Mrs. W. Dwyer.



21st WORLD CONFERENCE — from page 3

speeches of welcome, the roll call and then to most of us sitting in the Conference the most moving moment of all — the telephone rang — it was the World Chief Guide herself speaking, it was wonderful to hear her, but there were many handkerchiefs brought out (Margaret had to lend one to me!). The Chief sounded a little frail but it was the same wonderful message and I think an inspiration to all of us here.

We then settled down to business. The adoption of the report and the presentation of the Treasurer's report, then we had a very good paper by Mlle. Coutrot "Guiding, a Contribution to the Development of People and of Communities?" After lunch we met in discussion groups — and tomorrow the findings of these groups will be presented.

After dinner we went over to the Conference Hall and heard Signora Lodoli tell us about the reports of the Young Adults' Seminar and then we saw slides on the four World Centres. Eleanor Manning showed us Sangam, Ros Coulson arranged a very good film on Olave House, which was accompanied by a story she composed and sang and Elizabeth Broderick presented the programme.

Joyce came to visit us before bedtime. She arrived rather later but we laughed a lot, in fact this delegation has been able to enjoy life here so far and we all laugh a lot.

With good wishes from the five of us,

Gwen Lloyd

FROM OUR STATE COMMISSIONER

It is a very great pleasure to welcome Mrs. F. H. Grimwade as State Commissioner-elect. Three years ago Mrs. Grimwade undertook the task of forming what is now Hume Region. Although only a fairly small Region, it had problems peculiar to the area — country, yet not far from Melbourne and looking towards the city for strength. Under her leadership the Region has established quickly and gained a character of its own.

I know that Mrs. Grimwade, with her friendly, vital personality, will bring similar competent leadership to the State when she assumes office in February, 1973.

* * * *

May has been truly one of the busiest months ever for your Headquarters in Victoria: encompassing within its 31 days a three-day mid-week new Commissioner Training; a most interesting and worthwhile meeting of Division Commissioners (at present an annual event); the quarterly Advisers' meeting; monthly State Executive Committee meeting; representation at the National Y.W.C.A. Immigration Committee and the Annual Congress of the Salvation Army.

The Leisuretime Activities were extended to include Leadership Training to enable the scheme to be decentralised where desirable; a cookery demonstration and a greater number of Adventure Days than previously were also held.

* * * *

A handsome profit resulted from visits of parties to showings of the Beatrix Potter film. This was organised by the Camping Department and Miss Sophie Wirth; proceeds go to the Shoreham Campsite fund and bring nearer the day when our lovely new campsite is ready for use.

*

One hundred and eighty-four Queen's Guides were presented with their Certificates by His Excellency The Governor at Government House — the largest number so far. The following morning an inspiring Queen's Guides' Own Service was held in the Scot's

Church, at which many girls who have qualified for this Badge during the past year were present.

The Ranger Section's annual week-long Allambie Service camp was held this month. 6th May was "selection day" when 35 Patrol leaders were chosen from Region representatives to attend the Camp "Jumbunna", which is to take place in Western Australia from 30th August to 6th September next.

The first Safe Driving sessions were poorly attended, which was a pity because I understand that the context was both interesting and helpful. Apparently, owing to a misunderstanding, it was not clear that each session would be different — some members concluding that the dates arranged were alternatives.

Mrs. J. A. Hutchinson and Miss D. Carter were the Headquarters "team" at the Western Plains Region Conference, which I hear was a happy and useful event.

Owing to my absence from Victoria during the staging of the Gang Show I was unable, for the first time for some years, to attend a performance but, from all reports, it once again maintained its standard of excellence.

* * * *

The Australian Executive Committee met in Hobart one day before the convening of the Australian Council. It was a day of concentrated, hard work, aggravated by the delay in arrival of the State Commissioners because of weather conditions in Melbourne which delayed flights. Mrs. Dwyer, our International Adviser (who kindly transported me from home to Tullamarine), and I greeted our interstate visitors as warmly as possible, but we were the butt of much teasing. The hours stolen from us resulted in our concluding business left over from the Executive meeting at slack times during the Council meeting agenda but nothing that could be finalised was left unfinished.

Major items on the agenda included:

National Development Scheme

Reports from Mrs. Shirley MacPhee in Melbourne and Miss Jill Johnstone in

Sydney were received and the success of their efforts was applauded. Queensland reported upon their investigations into the possibility of the development of Guiding in mining areas and will report in October the feasibility of Australia conducting a pilot scheme in that State which could later be used in other locations.

Finance

From the Commonwealth Grant Funds, made available to the Movement for development, a sum was set aside for Papua New Guinea to bring two indigenous Trainers to Australia for further experience; another sum was made available for N.S.W. to send Trainers to Norfolk Island. **Handbooks** — A new draft agreement with the U.K. was approved, whereby the amount of royalty we are required to pay will be reduced.

Public Relations

The resignation of Miss Sheila Blackmore as Australian Public Relations Adviser was accepted and an appreciation for the contribution she has made during her period of office was extended to her.

From nominations received, Lady Harrison was elected, her appointment to take effect from January, 1973.

Australian Headquarters

Consideration was given to the siting of A.H.Q., the possibility of having to vacate our present location making this an urgent matter. Numerous suggestions were received and a feasibility study is to be undertaken immediately.

N.Y.C.A.

Miss Margaret Coleman was asked (and agreed) to continue as Australian Delegate for a further year. Miss Sue Ralston of Victoria was appointed as our other Australian Representative, her appointment being for two years.

(Note: Miss Elizabeth Hepburn resigned as our representative because she was elected to the Executive of N.Y.C.A. We are delighted to learn that she has been chosen to represent N.Y.C.A. at the W.A.Y. world gathering.)

States were advised to consider the appointment of a Youth Group Liaison to pass on useful information of community involvement to N.Y.C.A.

Trefoil Guild

Approval was given for an Australian Headquarters Trefoil Guild to be formed for people located anywhere in Australia who have been involved as Australian personnel in any capacity. (It is intended that they should also be members of Guilds in their local areas.

Miss Elliston Dusting was appointed the Deputy Australian Trefoil Guild Adviser.

Sangam

It was approved that an annual sum of \$500 from contributions to the Friends of World Centres Fund be sent to Sangam — the Australian Executive Committee to decide upon the distribution of any funds received in excess of that amount.

Asia/Pacific Seminar, Sangam, January 1973

From nominations received, the following selection was made:

Miss Marjorie Wood, Australian H.Q.

Miss Natalie Norris, Tasmania.

Mrs. A. M. Kearney, Victoria.

Mrs. J. Selman, Victoria.

World Mutual Aid

After discussion about Australia's participation in the mutual aid scheme, it was agreed that each State would promote this in the way suitable to itself, and report results mid 1973.



The rest of our delegations arrived for the Council meeting on the 24th, having suffered no setbacks and enjoying excellent flying weather. During the week which followed we experienced invaluable exchanges of viewpoint, in formal sessions, on social occasions, at mealtimes and walking between meeting rooms. All States included in their delegations members of the younger age group" and each leader ensured that all her members had the opportunity to be heard, both in the Council and at the various group and panel discussions. Your Executive Committee chose the Victorian delegation most wisely and, on your behalf, I express to Miss E. Bunning, Mrs. A. Squire, Mrs. V. Surry and Miss Margaret Tharle, thanks for making a real contribution to many aspects of the Council meeting.

The Chief Commissioner undertook the difficult task of Chairman with her customary efficiency, ensuring that we heard and considered each other's points of view — reached conclusions and decisions where possible — left open for later consultation matters requiring further consideration or information — fitting business into a strict timing schedule meanwhile. In addition, she fulfilled the public relations role at Vice-Regal and Civic gatherings and was readily available to Press and Television personnel when called upon. We know that she will handle the arduous and exacting task of Chairmanship of the World Conference in like manner.

*

Many of the Australian Advisers were present and made valuable contribution to our deliberations; participants commented upon the usefulness of this personal meeting with A.H.Q. personnel.

Tasmania arranged for our comfortable housing within Jane Franklyn Hall at the University and their careful planning and friendly execution of the domestic arrangements ensured that we were able to get on with the job in hand. Contact with the girls was made through the many souvenirs provided by the Divisions and Districts — I hope you had the opportunity to see the display in Headquarters of a selection of these.

With the changes made to the Constitution, this was the last meeting of the Australian Council and Tasmania enjoyed the privilege of being hostess State on the final occasion. Another moment of history for Australian Guiding occurred at the close of the meeting when led by the Chief Commissioner, each State Commissioner signed the amended Constitution.

The Australian delegation to the World Conference, Miss Barbara Neill, Miss Mary Lambie, Miss Margaret Coleman and observers, Miss Enid Bunning and Lady Lloyd, were briefed very fully with States' decisions and opinions and we know that they will be worthy representatives of Australian Guiding.

* * * *

As you will see in this issue, a design for my KNOW YOUR AUSTRALIA Challenge Badge has been chosen. With the help of the Advisers a pamphlet which suggests

ways of using this theme has been designed and one is available for each unit. These are being distributed through Commissioners.

The Commissioner's Newsletter also carried details of a competition, with cash prizes generously donated by Ampol Petroleum (Vic.) Pty. Ltd. — the onus is upon leaders to seek information about this and to pass it on to the girls.

I am grateful to Mrs. Kirkman for the seed of this idea about furthering knowledge of our own country, to Miss Barr for planting the seed and for all who have helped it to grow into a healthy plant. We all hope that it will be of benefit in unit programmes as well as to the individual girl.



KNOW YOUR AUSTRALIA Challenge

Numerous designs for a badge in connection with my challenge were sent to me. Some were mere ideas — many, rough sketches — a few, beautifully prepared drawings with explanations. From all of these I have selected one with immediate impact and which is not over-detailed. This was submitted by Merran Frieze of the 2nd Syndal North Company. Congratulations Merran — I hope that you will be pleased with the result when it is produced in badge form.

I have consulted with the Advisers and give hereunder instructions about the wearing and use of this badge, which may be purchased by Brownies, Guides and Rangers who are participating in the Challenge by furthering their knowledge of one or more aspects of Australian life.

As you know, the Conservation Badge will be removed from uniform at the end of June and the Challenge badge may be worn in its place:

GUIDES under the World Badge on the right hand side of the blouse, in line with the Patrol Emblem.

BROWNIES just above the left elbow, below the Venture Badge.

(To page 20)

QUEEN'S GUIDE PRESENTATION — SATURDAY, 6th MAY, 1972

This was a day we would always remember — the one we had worked towards from the time we made our Promise.

We met, outside the ballroom of Government House, the Queen's Guides who had been at the rehearsal the previous evening, and waited for the signal to form into rows in readiness for the presentation inside the ballroom.

One could hear a pin drop, then on the roll of drums Sir Rohan and Lady Delacombe entered.

It was a thrilling moment for us to receive our Certificates from the Queen's representative and have with us our guiders, who had been such a tremendous help to us.

Messages of Loyalty were read by a Queen's Guide and Queen's Scout and these would be forwarded to Her Majesty the Queen.

After the ceremony some of us returned to Headquarters for morning tea and the opportunity to get to know one another better.

On Sunday morning we met at Headquarters and then walked up to Scots Church for a special Queen's Guides' Own Service. This had been organised for us by a metropolitan company and it was a moving moment when the Australian Flag and World Flags were carried into the church before the service. The theme was friendliness and we all felt this was indeed true in Guiding.

Mrs. Renshaw Jones, our State Commissioner, spoke to us and the music of the hymn "Morning has Broken" provided the "quiet" time to think about what she had said to us.

Closing words on "friendship" and the carrying out of the Colours made a moving climax to a memorable weekend.

Queen's Guide Messages of Loyalty were received from Queen's Guides taking part in the Ceremony at Government House on Saturday, 6th May, 1972 — the following message which was read at the Ceremony by Jennifer Smith, 1st Moorabbin South Company, was combined from the Messages of Loyalty sent in by Suzanne Gleghorn, 1st Monbulk and Gail Pavia, 17th Geelong.

Your Excellency,

I have the honour to read the Message of Loyalty from the Queen's Guides gathered here this morning.

We, the Queen's Guides at this Ceremony, pledge our loyalty to you, symbol of our country's ideals and patron of our Association.

We recognise that narrow nationalism must be put aside to help the members of this complex world in which we live. We accept the challenge to become good citizens through service and responsibility.

* * * *

SAINT GEORGE'S DAY

Scouts, Guides, Brownies and Cubs from 1st Glenhuntly and 5th Caulfield met at Glenhuntly shopping centre to go to St. Paul's Cathedral to celebrate St. George's Day. There was a jazz band who assisted with the service. Before the service we had a sing song. At the start of the service there was the trooping of flags. A Scoutmaster talked about St. George and the "dragon".

1st Glenhuntly and 5th Caulfield caught the tram home as it was the night of the train strike.

—Kerry Brown,
1st Glenhuntly Brownie Pack



Even in this calory-conscious age! . . .
FOOD . . . FOOD . . . FOOD . . .

Let your tummies be tempted by "Tapestry Tuck-in"

Today, tonight, tomorrow.

Tantalising, Tempting Tidbits to be tasted. Forget your figures and fearlessly fly into the fabulous field of Food.

The way to a Ranger's heart is through her stomach.

So we're appealing to your stomach via your pocket

Have your magnificent Movement members made money by merrily munching matured mellow manifestations?

This is your month to assist Tapestry.

Eat big and give generously, organise your Tapestry Tuck-in now.

—From "Kuringal"



"CAMP WARRAWEE"

On the weekend of 29th-30th April a Challenge Camp was held for Patrol Leaders with Camper Badge, at Britannia Park. This was called "Camp Warrawee", and 169 Guides, 23 Guiders and 16 Rangers attended.

On arrival each Patrol, consisting of three, four, or six girls, was given a campsite on which to erect a tent or two (depending on the size of the Patrol), screening and other gadgets. After settling in, we were able to commence our Challenges.

The Challenges were very original and very interesting. The Challenges were — make a hammock, a swing or a commando bridge. We had to complete one of the above, and we had to try at least three of the following — Devise a burglar alarm around the campsite using square lashing — make a gift for someone — make a small raft, light a fire on it and float it in water — set up a communication device, between the kitchen and tent, to carry a written or spoken message — make a rope ladder — devise a towelling machine for a lazy Guide who could not be bothered to dry herself after a bath — and make a bundle and carry it at least 10 yards on your head.

We worked very hard at these Challenges all Saturday afternoon. After we completed each Challenge, a Guider gave an appropriate mark — A, B or C. Saturday evening a campfire organised by the Rangers.

During Sunday morning Lady Delacombe came to see us in action. We were most honoured to have such a distinguished guest attending the camp.

Our Challenge Cards were to be handed in before the Closing Ceremony, which was at 2 p.m. There we were to be told who would

win the beautifully decorated Pennant. The Pennant was made by Karen Pawsey, a 13-year-old Guide from Pascoe Vale South. We were most surprised when we were announced the winner of Camp Warrawee 1972.

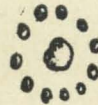
We had made many new friends during the camp, and we enjoyed ourselves immensely.

We would like to thank the organisers for giving us and other Guides such a wonderful weekend.

Caulfield Division—

Lyn Jack, P.L.; Margaret Locarnini —
2nd Murrumbeena Co.

Robyn Hopwood, Judy Franklin —
2nd Caulfield Co.



Guiding in Sunshine suffered a great loss in the recent death of Mrs. Mabel Anthony.

Members of the Movement in McKay Division showed their respect by forming a Guard of Honour at her funeral.

The Division will sorely miss Mrs. Anthony who has been such a reliable and enthusiastic worker for guiding since 1950. Local Association member, District Commissioner for Sunshine and Division Commissioner for McKay Division until her retirement in 1967, she has since then, although not in good health, been a tester for interest badges.

She will always be remembered for the many hours of work she put into promoting guiding in Sunshine, Braybrook/North Sunshine, St. Albans and Deer Park Districts — by no means an easy task.

Many have very personal memories of her example and encouragement, given freely to them, and especially of the friendship shared around campfires and at outings as well as at more formal functions.

The thoughts of the Division go out to her family and we pray that God comfort them until they meet again.

—McKay Division

TRAINING PAGES

ARE YOU IN THE TEAM?

It was late Saturday afternoon and Joan was tired. She had just arrived home from the District Rally and display, taken aspirins for her aching head and started ironing; but there was the cheering thought that all her hard work and planning had been worthwhile. Hers had undoubtedly been the best turned out unit there, due to her efforts in stressing the importance of looking their best to the girls and then phoning or visiting all the mothers so that they'd keep an eye on things — "Girls are so forgetful".

Then she had planned her Unit's display, typed out a copy for each girl, decided who should take the main parts and rehearsed them until they were doing it almost perfectly. Of course she might be prejudiced, but she also felt that her display was the best; though the numbers present had been disappointing. She'd speak to the girls about it on Tuesday and point out to them how some had let her down after all the hard work she'd put into their display. Of course she'd really planned the whole display — though there'd been some argument at the District meeting about whether the girls wanted a display, her ideas had been accepted.

"IT'S OUT OF BOUNDS FOR A THROW IN", shouted a voice from her husband's transistor as he began weeding under the window. "HERE'S A CHANCE FOR SMITH. NO! JONES BUTTED IN AND SPOILED HIS OWN TEAM MATE. IT'S STACKS ON THE MILL AND THE UMPIRE'S GOING TO BALL IT UP. THERE'S THE BOUNCE AND JONES HAS THE BALL AND A TEAM MATE UNATTENDED, RIGHT ON THE EDGE OF THE TEN YARDS SQUARE IS GIVING HIM A LEAD. HE COULDN'T MISS FROM THERE AND A GOAL WOULD PUT THEM IN FRONT. BUT WHY DOESN'T JONES PASS TO HIM? HE ISN'T GOING TO PASS! NOW THAT'S SELFISH PLAY. HE'S LINING THEM UP. WHAT A MAGNIFICENT KICK! I THINK IT'S A GOAL. NO, IT HIT THE POST. NOW IF JONES HAD PASSED STRAIGHT AWAY, THEY'D HAVE GOT A GOAL FOR SURE. I'VE SAID THIS BEFORE AND I



SAY IT AGAIN, JONES IS BRILLIANT BUT HE LOSES MATCHES BECAUSE HE WON'T PLAY FOR HIS TEAM. HE'S SELFISH."

As her husband, and transistor moved away, Karen, their Guide daughter, came in. "Can I cook the tea for you Mum", she asked. "Or finish the ironing?"

"No thanks darling", said Joan. "I know you did Laundress and Cook badges for your Little House Emblem but I'm most particular about ironing Dad's shirts and I think I'd do a better job with the pie; but there's something you can do for me. You know I do want you to get Queen's Guide, and you'll have to do Commonwealth Knowledge badge before exam time. Now I've got some books from Headquarters and saved some more pictures, so you can learn some facts and cut out the pictures and after tea I'll hear you and advise you about putting the pictures in your scrap book."

Dad and Karen did the dishes while Joan planned the programme for Tuesday's meeting. She always sent Susan, her assistant, a copy with details of any activity she was to take. Trying to find a suitable game Joan opened "Matilda". A heading caught her eye and she glanced at the article:—

Got YOUR guernsey yet?

Do you make that extra effort to be at the District meeting even if your Unit does meet the same night?

After all, one of our aims, surely, is to encourage the Rangers to become self-reliant?

Do you make a point of being punctual — or send an apology?

If the meeting can start on time, there's much more chance of it finishing at a reasonable hour!

Are you the first to volunteer when the District Commissioner needs some help?

Your example might encourage (or shame!) others into doing likewise.

Were you available to help out when the Assistant Q.M. was rushed to hospital a week before the Guide camp?

What better opportunity to get to know some of YOUR prospective Rangers.

Did you rally to the Brownie Guider's S.O.S. for some extra help at a Pack outing?

First hand experience, YOURS as well as hers, is great for helping your Ranger with her Leadership Certificate.

Are you observant enough to help draw out the shy person, the minority voice, the dissenter; be it formal meeting or informal discussion?

Your timely friendliness might make ALL the difference to the contribution SHE is able to make.

DO YOU LISTEN TO WHAT OTHER-PEOPLE SAY, RESPECT THEIR OPINION AND THEIR RIGHT TO HOLD IT, EVEN WHEN YOU PERSONALLY DISAGREE?

Remember the third and the tenth Guide Laws!

DO YOU HONESTLY TRY TO SEE BOTH SIDES OF A QUESTION?

To be objective about it is of much greater value than an emotional outburst.

CAN YOU, WHEN OUTVOTED, ACCEPT THE SITUATION GRACEFULLY AND WORK CHEERFULLY FOR THE MAJORITY DECISION?

You can't win all the time, and the world DOES appreciate a cheerful loser.

ARE YOU ENTHUSIASTIC WHEN SOMEONE ELSE HAS A BRIGHT IDEA YOU WISH YOU'D THOUGHT OF YOURSELF?

GOOD ideas are scarce; we can't afford to dampen any unnecessarily.

CAN YOU ADMIT FRANKLY THAT YOU'VE MADE A MISTAKE?

Nothing like it for taking the wind out of someone else's sails!

ARE YOU ABLE TO MAKE "THINKING TIME" FOR THAT UNEXPECTED HITCH IN THE PROJECT UNDER WAY?

"A think in time" can save much wasted effort and exasperation.

ARE YOU AND YOUR ASSISTANT TRUE PARTNERS, POOLING YOUR RESOURCES, SHARING THE PRESSURES AND THE PLEASURES, AND COMPLEMENTING EACH OTHER IN THE MANAGEMENT OF THE UNIT?

The operative word is "SHARING". Do give her opportunities to USE her talents so that she might experience the satisfaction of really helping the Rangers.

ARE YOU ALWAYS READY TO LEND A SYMPATHETIC EAR TO:

A DESPONDENT RANGER?

A WORRIED MUM?

AN INEXPERIENCED COLLEAGUE?

Often it's not advice they need — just someone to LISTEN.

DO YOU MAKE A POINT OF ANSWERING CORRESPONDENCE, PASSING ON INFORMATION, AND RETURNING APPLICATION FORMS PROMPTLY?

How about the second and third Guide Laws!

ARE YOU, WHEN WRONG, READY TO CHANGE; AND WHEN RIGHT, EASY TO LIVE WITH?

Bless you!!!

HIGH MARKS?

Congratulations! You're truly one of the TEAM!

"Sounds like that wretched football even here", she thought. "Oh no, it's about being punctual at District meetings and participating; and I do."

* * * *

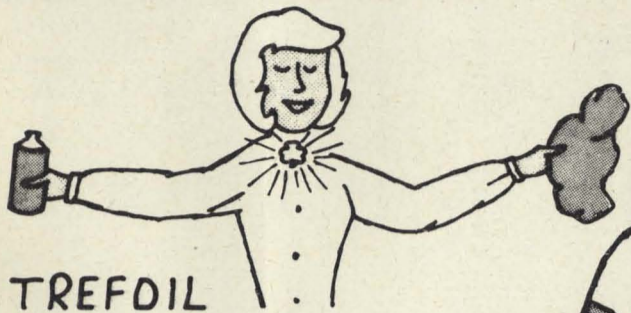
"Here's another article!"—

(To page 14)

UNIFORM WEAR & CARE

BLOUSE

WASH FREQUENTLY AND IRON CAREFULLY. PAY SPECIAL ATTENTION TO SEAMS. ALWAYS HANG UP WHEN NOT IN USE.



TREFOIL

POLISH WITH A METAL POLISH EVERY TIME WORN. NEVER CLEAN WHILST PINNED ON TIE.



TIE

WASH FREQUENTLY AND PRESS.



BADGES

SEW ON ALL ROUND IN SMALL STITCHES. CLOSE TOGETHER WITH MATCHING COTTON.

SKIRT

KEEP BRUSHED AND CLEAN. HANG ON A HANGER AS SOON AS TAKEN OFF. CHECK FOR EVEN HEMLINE AND APPROPRIATE LENGTH.

SOCKS

FAWN, LONG OR SHORT.



SHOES

BLACK OR BROWN. POLISHED TO PERFECTION.



Tinge

TRAINING — from page 11
ARE YOU IN THE TEAM?

Do you as a Guider, both at unit and district level, work together with the other Guiders; or are you an individual with your own ideas which you push to the point of conflict with the rest? If the latter, what effect does the resulting conflict have on the harmonious running of your unit and district?

As Guiders we are not there to dictate to the company, but rather to guide the girls along the right channels and to help them to make the right decisions . . . what is best for the Unit as a whole . . . and what is best for the individual members of the unit . . . whichever applies in a particular situation. By occasionally offering our ideas to the girls, we are assisting them to reason for themselves and consequently to find their own ideas.

Such guidance should usually, I feel, be given in P.L.'s Council when the girls are discussing relevant matters. Some girls seem to find it difficult to begin a discussion, they seem to be shy about it, but with you asking a question here or adding a comment there, they can be stimulated into discussion. I might add that this discussion becomes highly critical, but out of it comes the very ideas we have been looking for. With experience confidence grows and shyness shrinks: so we are working towards the time when ideas will flow, at Patrols in Council and Patrol Leaders' Council.

When Guiders do not work as a team it quickly becomes obvious to the company, the girls may take advantage of the situation and consequently the unit does not function efficiently or effectively. How can we teach the girls to use the Patrol system properly if we, as their leaders, are in obvious disagreement. This team spirit, I feel, should be particularly strong in the areas of discipline and the wearing of correct uniform. Imagine the chaos caused by one directive from you being contradicted by your fellow Guider. If we set a good example, a large part of the company will follow it.

We should also remember that we are not only members of a unit team but also of the district team. If we are on time and have information in on time the district too will function efficiently and we shall have a happier atmosphere in which to work.

I feel that we, as Guiders should stimulate our thinking by attending regular training. In this way our ideas will receive a new slant and we will be ready to encourage the girls whenever it is required.

As the youngest member of my Guiding team I always appreciate my leader discussing the problems of the unit with me, and sometimes taking my advice; and realising, as I do, that we Guiders are only here to help the Guides develop, I can see that it is important that we listen to, and when possible, act on the Guides' ideas. They will appreciate this and co-operation will increase until we're all in the team.

"And it's about not having disagreements with Assistants and I don't."

* * * *

"And **another** article!!"—

ARE YOU IN THE TEAM?

Ventures, interests,
Pow wow, games.
Brownie-ring and journeys.
Sixers, Seconds, Brownies, Leaders, Pack
Guide,
Assistants and the tweenies.
Mix together, rearrange,
Plan, discuss, imagine.
Dream a little
Work a lot
You have a Brownie meeting.

A MAGIC FORMULA FOR PROGRAMMING?

An "instant" Brownie meeting? would that there were such a thing! But then, perhaps I am glad there is not because the challenge of the planning, watching ideas grow and take shape and form is all really part of the fun. Held on there, you don't agree with me? You didn't have fun planning your last month's programme, dreaming up your meeting plan? Well if you didn't, tell me honestly, who helped you plan?

Oh I see, as leader you felt you had to do it all because there wasn't time to talk it over with your Brownies or other leaders. And the last time you did they didn't have many ideas any how? So you did it all and it wasn't much fun.

Well for you I do have a formula, perhaps not magic but sure to give you all the fun and satisfaction it would if it were. Try sharing.

SHARING IS FUN.

Try sharing the planning and programming with those who will share the meeting. Yes all of them starting with your Brownies,

They will have a multitude of ideas about their interests they want to follow over the coming weeks. If you talk to them about what they would like to do, following journeys, ventures or special interests, very quickly you have an "instant" overall plan for your next few months' programme.

AN OVERALL PLAN

Then follows the challenge of fitting these plans into your weekly meetings. Now is the time to share programming with your other leaders. Perhaps you could do this over a welcome cup of coffee in the quiet after your meeting. Your Brownies have given you their outline of where they want to go and now you can work out the details together. Who has the best skills to help with journey activities or special interests? Do you need the help of any outside experts? A call for Road Safety activities may lead you to your local police or for special home-craft to a willing mother to help. And now is the time to check that what you and your Brownies have been doing in the past months and what you are planning for the next few months have provided a balance of activity and no one's special interests have been overlooked. Is your programme catering for all-round presentation of the Eight Point Programme.

SO TO THE WEEKLY MEETING.

You and your team, your assistant, Pack Guide and maybe special helpers are now ready to organise all your Brownie dreams and plans into weekly programmes.

But wait, you say, you have done that, having planned who will take special activities. Oh no, now I am talking about the meeting itself. Who will lead the games, Pow-wow, Brownie-ring, cleaning up and tidying and all the rest?



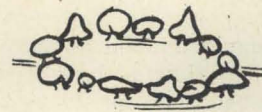
A CHALLENGE.

Here is a challenge for you. Are you and your leaders all getting fun from sharing your meetings? Check and see. Look back over your last four weeks' meeting programmes and check on this list who actually led the following parts of your programme.

	Your	Pack
You	Assistant	Guide

Pow-wow
Brownie-ring
Opening
Collecting subs.
Games
Special activities
Closing
Cleaning up
If you have

1. More than 30 ticks in your column take a holiday. You are tired and need it and your assistants are bored and need it too!
2. More than 20 ticks in your own column and your leaders are having fun and training, but try sharing a little more with them.
3. If you all have a fair share of ticks in your columns, congratulations. You are all getting the fun that comes from sharing Brownie meetings and you must all, including your Brownies, be richer for it.



"Telling us what to put in our programmes and I know that", thought Joan, "I wish they'd print new games. Oh well! She'll have to play 'Stew' again."

"Matilda" joined other glanced-at-copies to be read when she had time.

After helping Karen with her badge Joan fell into bed, but had hardly closed her eyes when the shouts of "Jones! Selfish! Doesn't help the Team!" made her headache even worse. They must have the football replay on but why so loud? She tried to shut out the sound with her pillows.

Joan dragged herself out of bed on Sunday, which was not to be a day of rest. They

were having a combined service at church that evening and Joan had said that she would bring all the cakes for supper: so the other ladies were bringing sandwiches and savouries. Despite an aching head she made lovely cakes, but she felt steadily worse as she sat through the service and supervised supper. Then home to bed she went to dream about cakes and football.

Next morning she felt so sick that she phoned the doctor, who, after examining her said, "I can't find anything seriously wrong, Mrs. Blank, except that you're exhausted. I'll give you a prescription and I want you to go to bed and stay there until Thursday."

"But I can't Doctor", interrupted Joan. "My family couldn't manage without me, and I'm a LEADER in the GUIDES and it's my meeting tomorrow and my Assistant is quite inexperienced."

"If they don't do without you for a few days, now, they'll have to do so for longer later. Remember, Mrs. Blank, that the CEMETERIES are FULL of people who once thought that THEY were INDISPENSABLE."

* * * *

The next few days were like a dream to Joan. Her family and neighbours came and went. Karen seemed thrilled to cook and serve some of her meals and occasionally she heard a voice shouting about Jones' selfishness.

On Thursday afternoon as she was dressing for the first time, a thought struck her: "Was he saying Jones' or Joan's? Was her sub-conscious mind or something, trying to tell her that she was selfish? But I'm not", she thought. "I've been sick because I did so much for other people."

Then she remembered something about football in an article in "Matilda" and she read it carefully. The district and unit meetings never clashed: and she thought she could say "Yes" to the next four questions and the second last: but she'd never even thought of doing what the sixth suggested and it was "No" to all the others too. She'd concentrated on pushing her own ideas.

On to the next article which started off with another awkward question. "I've always insisted on my way", she answered honestly, "and never bothered about what

others wanted. This young Guider appreciates being asked, so do the girls. I wonder — I thought as Susan never disagreed with me all was well; but I never let her have a say. I remember at Training Class they talked about leaders sharing the planning and taking of meetings and a couple of Guiders grinned knowingly. I wonder if Susan grinned when they talked about that at her training."

Then came a recipe for making things work like magic, by asking under-elevens what they wanted and sharing between the leaders. She didn't do the chart as challenged, because she knew that there would only be one or two ticks a week in the Assistant's column.

"I've never let Susan take anything but games or teaching a group, and never even thought of getting her to take a meeting with me acting as Assistant. so she had to do it for the first time with me away. It's my fault if things went wrong."

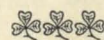
After re-reading some of her notes from Training Class and parts of the handbooks, Joan did some hard thinking: "My mistake", she decided, "has been in thinking of things rather than of people — aiming at having good meetings, good displays, etc., and smart uniforms with plenty of badges: and not realising that the purpose behind all our activities should be to help the girls to think for themselves, to co-operate, improvise, discover their own abilities, learn skills and set high standards for themselves and individually and in groups to help others — in fact to work on the Eight Point Programme".

"I'll re-read the handbooks and my training notes and try to do a better job; and I'll stop pushing Karen through Queen's Guide. She can do it if she wishes in her own way and at her own pace; and I'll give her more chance to use the skills she has learned."

"Anyway", she thought, "Doctor wasn't quite right about the cemeteries — they're only about half full of people who thought they were indispensable. There were others, unselfish enough to help other people to progress and to stand aside so others could share the limelight. That's the sort of person I'm going to be — at home, at Guides and church and Mothers' Club. In fact I'm going to play for the team."



MATILDA NOTICES . . .



CAMPING DEPARTMENT

"WIRAKE" — State Camp — 4th-11th January, 1973.

Guiders — Has your Company representative been chosen for this camp? When she has been chosen let your Division Commissioner know as she will apply for forms on the 1st August.

Division Commissioners will apply for forms on the basis of one Guide from each Company in her Division. Forms will be returnable to Headquarters by 8th September.

Don't forget to apply to the T. C. Lothian Trust if you have a Guide who is in need of some help to attend this camp. Application forms for the T. C. Lothian Trust are available from the Secretary to Advisers, on receipt of a stamped, self-addressed envelope.

* * * *

TRAINING DEPARTMENT

Our heartiest congratulations to:—

Mrs. J. Munro on becoming a member of the Goulburn Region Training Team.

GUIDE TESTERS DISCUSS INTEREST BADGES

At a recent meeting of the Blackburn Local Association over 60 parents, testers and guiders listened and discussed the various interest badges.

A Commissioner trainer led the discussion on standards required for the attainment of Interest badges.

Other highlights were:—

1. An explanation by the Region Commissioner, of the organisation and structure of Guiding.
2. A tape recorded playing of the outline of the eight-point plan.
3. The enrolment of six Local Association members by the Region Commissioner and the Division Commissioner.

The main decision of the evening was of course that the "GUIDE" is the all important member of the Movement.

BROWNIE GUIDE SECTION

Brownies and Holidays — Only Pack Holiday Permit Holders are allowed to take Packs away, and the Guider in charge is always the Permit Holder. In other words, a Brownie Guide Leader may only take away her own Pack and then only if she holds a Pack Holiday Permit, the one exception being the time she runs her first Pack Holiday and is tested on it. Guiders do not take away other Packs as they need to know the children well (and young children of Brownie age need to know their Leaders) and no Pack may go away if the Guider does not hold a Pack Holiday Permit. The pleasure and enjoyment of both Brownies and Guiders is evidenced by the large numbers of Pack Holidays held each year, and new Permits obtained.

AUSTRALIAN RECORDS

Would YOU be holding any papers relating to the early years of the Australian Council, or to events of national importance held in the Australian years of development?

If so Australian H.Q. would be most grateful if you were willing to give H.Q. the papers, or loan them for copying and later return to you.

If you think you may have such records an enquiry to the State Secretary, Victoria, or to the Editor "Matilda", in the first instance would be appreciated.

Here lies a woman who always was busy, she
 went at a rate that rendered her dizzy.
 She belonged to ten clubs, read Browning at
 sight;
 Went to luncheons and bridge and was out
 every night;
 She belonged to committees and went near
 and far,
 She golfed, she kodaked and drove her own
 car.
 Her children she saw just once in a while,
 Her husband stayed home and then tried to
 smile.
 One day on her schedule, one whole hour did
 she find free —
 The shock was too great — she died unex-
 pectedly.

3rd Balwyn (Yooralla) Pack GOING FISHING!

"Yippee! Bluebird's getting the fishing rods out!" and as quickly as calipers, crutches and wheelchairs can get them there, the Brownies form up in three straight (well, nearly straight) lines in their Six corners. Our equipment consists of tiny magnets dangling from lengths of dowelling, and we may be fishing for dishes and cutlery to set the table, or halves of greeting cards to be paired up correctly, or carefully watching and working out semaphore signals which tell us which coloured objects to catch — it doesn't matter, what counts is that we're going fishing!

With handicaps ranging through various degrees of spasticity, spina bifidas, and one case of complete limblessness, it is quite surprising how many games we play in which there is call for skill of some sort — ball throwing and balancing among others.



Our biggest problems are memory and concentration. To overcome these we include in our repertoire such activities as Pelmanism played with swap cards, leaf matching, and shopping games.

Of course there is a serious side to the Pack too. The Brownies take a lot of interest in working for their Journey badges and some have earned Interest Badges as well. Looking through my records I notice several Cooks, House Orderlies and Swimmers, a First Aider, an Artist, a Writer, an Animal Lover, a Hostess, and following a visit to the Kew Traffic School, some Road Safety experts!

Our Ventures have included a Christmas Party for which the Brownies made the decorations, prettied up the food, worked out a programme and invited the guests. We

have also made greeting card scrap books for the Royal Children's Hospital, toys for the lucky dip at the Britannia Park Garden Fete, and an Australiana calendar which was very much appreciated by the combined Girl Scout-Brownie Scout unit at the New York Memorial Hospital for cancer patients.

Perhaps the most enjoyable venture was putting on a play, "The Sleeping Princess", in which every Brownie had a part even if all they had to do was carry on a poster made by the Pack telling our invited audience of parents, friends, Commissioners, and an Extension Guide Company, where the scene was taking place. Wearing glamorous evening dresses and makeup, the Brownies did their parts extremely well and looked like lovely wax dolls.

Another Venture was preparing and holding a Brownies' Own at Britannia Park Chapel.

Cents-for-service is another very popular Pack activity.

Leading such a Pack as ours is often very challenging, but seeing the pride and joy each achievement brings is ample reward for those involved in the leadership of 3rd Balwyn Pack.

—M.V.

God of bright colours: rainbows, peacocks,
And the shot-silk gleam of springing
Wind-shaken wheat
On rolling red-ribbed Earth:
Thou who dost bring to birth
From out the womb
Of darkness golden flowers,
Filling the hollows
With daffodils in March,
Cowslips in April,
Dog-roses in May;
Who in the smouldering forest
Makes the huge
Red flare of Autumn:
God of all the colours
On Earth, and hues (too bright for mortal
eyes)
In Paradise —
Unblind me to Thy glory,
That I may see!

—F. W. Harvey,
from "Inner Light" (England)

THIS IS THE LOCAL ASSOCIATION'S PAGE



KNOWING YOUR OWN COUNTRY

Mrs. Renshaw-Jones has challenged the girls to know more about Australia; let us as Local Associations take up the challenge as well.

Australia lies between 10°39' and 39°11' S., 113°5' and 153°16' E., said my encyclopaedia, thus firmly putting this island-continent in its place. In half a page the geography of the country was covered. Yes, I thought, that's about all I know too; and went further in search of information.

We Australians live in a land of absorbing interest to geologists and geographers and yet we know little of the simple physical facts and figures of our vast country.

The largest state has an area of almost one million square miles, the smallest 26 thousand square miles; the total area of Australia is almost three million square miles. Our climate varies from tropical rain forest in the north to arid desert in the centre and cool temperate in the south. Who knows the average rainfall of her own district, or the adjoining one? The mean annual temperature?

We long to visit the Alps of Europe, or the American Rocky Mountains, ignoring our own matchless mountain chain running from north Queensland to southern Victoria, with many peaks over 4000 feet. Kosciusko — 7325 feet is our highest mountain. What are some other notable peaks?

The length and flow of our few rivers, many of which rise in these eastern mountains, can tell us a great deal about the problems of farming the country they water.

Geoffrey Blainey, in his book "The Tyranny of Distance" stresses the fact that our development of large, over-populated coastal cities has come about as a result of our geographical features. It would be well to know some of the distances when we discuss the problems of our urban sprawls and centralisation which leads to knowing the population figures, not only of our own town

or city, but of the other large cities in the State.

If we are to face up to the dangers of over — or under — population, it would be well if we "ran a rule" over our continent and found out for ourselves the length and breadth, the size and number, the where and what of Australia, the States the cities and the features of our fascinating land.

* * * *

NEWS FROM THE COUNTRY

MOUNT BEAUTY Local Association is making a special effort to attract new members and to interest the community in their activities.

At the beginning of the year their local newspaper published a paragraph on the L.A. — the work it does, and the support it needs, also an invitation to attend the first meeting of the year.

At this meeting, the L.A. calculated the amount of money they would need for the year, \$700, and planned fund-raising events for the next six months. Once again, the local press let Mt. Beauty residents know the details of proposed stalls, lamington drives and demonstrations.

Mt. Beauty sets us an example in organisation and co-operation between the district and the press.

HORSHAM had a Field Naturalist as guest speaker at their Annual Meeting.

BARWON HEADS-OCEAN GROVE Local Association held a "Getting to Know You" morning coffee recently and invited mothers of brownie guides and guides to come along and meet everyone. It was held in the home of the District Commissioner and 40 mothers talked together and were introduced to those they did not know.

The District Commissioner gave a short talk on the function of L.A. and the need of

mothers' support. As a result of this we gained several new members for L.A., two testers we needed badly and a possible leader. We thought other L.A.'s might like to try this idea.

FUND-RAISING PET-SHOW

If you are thinking of running a Fun Pet Show help is available.

Miss Diana Dundon, Petcare Information Centre, 117 Collins Street, Melbourne, 3000, telephone 63 3322, will supply all the necessary information.

LYRE-BIRDS

Walking quietly along the soft earth track in Sherbrooke Forest, my friend and I heard a Lyre-bird calling. We made our way into the forest, and saw, quite easily, a male Lyre-bird dancing on a mound. He was giving the usual repertoire of forest birds; this included the alarm cry of the introduced Blackbird. Quite nearby, a young cock bird was scratching the ground for worms and insects.

Moving along, in the direction of Sherbrooke Lodge, we heard some more singing. We crept in again, and saw six or seven Lyre-birds; some feeding, some dancing. It was noticeable how well the brown tonings of their feathers harmonised with the brown earth and fallen leaves and bark.

Whilst we were watching a particular male bird dancing, to our surprise, a second bird jumped onto the mound, and appeared to do a similar dance, keeping in time with the "click clicking" sound. Has any reader noticed this?

—J.H.

KNOW YOUR AUSTRALIA — from page 7

RANGERS will not wear the Badges in uniform, but may sew them on to camp blankets.

Many thanks to Guides of all ages who took part in this initial stage of the Challenge and to the Leaders who gave them encouragement.

Warmest good wishes to you all,

Charlotte Renshaw Jones.



DEAR MATILDA,

We saw the letter in your May issue.

Yes, it is difficult to explain to Brownies who come home from District outings envious of other Brownies they have seen with an armful of Badges, but what a wonderful Pow-Wow discussion could follow such an outing.

Whether the Brownie with all the Badges is living up to her Promise.

Has "she done her best" — in working to gain the badge or has it been a "slap-up" effort.

Has "she helped other people" — by using the knowledge gained to obtain the badge, in the Pack or Home or School.

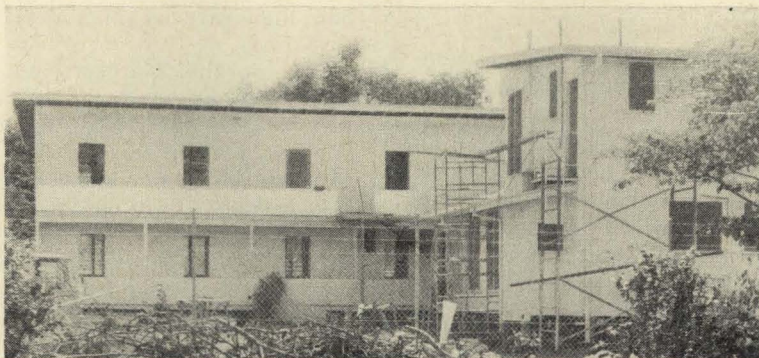
Has "she thought of others before herself" — by being the first in the Pack to gain a particular Badge for her own satisfaction or has she thought of helping others by putting the badge to use.

Do you and your Brownies feel a Brownie with 10 or more Interest Badges could really have an Interest in each one? After all they are called Interest Badges and it means a Brownie should have an Interest in what they are about **Not the Badge itself.**

From a Guider's view, the Brownies need very careful Guiding with Interest Badges, and a wise Guider will see that the Brownie has a real interest in the badge she wishes to obtain, that her standard is high and that the Brownie has extended and challenged herself, whilst at the same time developing and growing in each section of the Eight Points, for example: If a Brownie gained Agility, Athlete, Skater, Skier, and Swimmer she would be developing along the "Keep Fit" Point only. The standard of Badge Testing is also to be considered and this should be discussed with the Tester by the Guider and/or District Commissioner.

If a Brownie gains Badges too easily and they do not present a real challenge, they serve no useful purpose in the Brownie training, her attitude being "how easily can I get another Badge to add to my others". When a Brownie has gained an Interest

(To page 21)



Hostel in Port Moresby

GIRL GUIDES ASSOCIATION OF PAPUA AND NEW GUINEA

Your help is urgently required!

The Association has purchased a large two-storey building in Boroko, Port Moresby, to use as a much needed hostel, mainly for indigenous girls. There are 16 rooms, and we plan each one will be a bedroom for two girls.

Twelve of these rooms still need furnishing.

The cost of furnishing a bedroom is approximately \$200.

Maybe you could decide on a project to furnish a bedroom. We would be happy to name it after your area, or **you** may like to decide on a name for the bedroom.

Of course we realise that not everyone is in a position to raise \$200, and we would be happy to receive cash donations, which you may be able to raise in your district, and this will enable us to buy the many items required, i.e. tables, chairs, cupboards, cooking utensils, stoves, refrigerators, curtains, shower curtains, and many, many other things.

Please give the Girl Guides' Hostel, Port Moresby, some thought in your next project.

Did you know that the 1st Broadview Pack, in South Australia, invited the district's Trefoil Guild to their birthday party?

Leianne Borch, recently Miss Ranger Guide, was married at Colac to Bill Williamson. Leianne made the three-tiered wedding cake.



CENTS FOR SERVICE, NEW GUINEA — helping loading from the gardens

LOCAL ASSOCIATION — from page 20

Badge, a Guider can use this Brownie to pass on her knowledge and perhaps arouse the interest of others in the Pack.

We don't think the time has come for a rule to be made as to the number of Interest Badges a Brownie may gain, but perhaps a rule should be made as to whether a Guider really understands the real place in her Programme planning that the Interest Badge should take — Her Choice or **THE BROWNIE'S**.

—From Brownie Committee

DEAR MATILDA,

Today Brown Owl told us about your magazine and about Brownies writing to you about what they are doing.

We want to tell you about our weekend at our beautiful new holiday house at Tynong North. We went last Friday and came home on Sunday. We went by bus. Mr. Jones was our driver. It took one hour to get there. The house looks like a big green and brown tent but more secure. We all wished when we stepped in the door. Inside it was dark and spooky because the shutters were shut. When the shutters were open the inside looked pretty and shiny. The beds are bunks. They are upstairs. We all liked sleeping on the top one, it is like sleeping in the roof. The fireplace is in the middle of the room. We collected wood and made a big fire. The chairs are nice and bright orange. The kitchen is big, it has beautiful views with lots of lovely trees.

One night we went for a walk in the dark. A gum nut fell on Tawny's head. When we shone our torches up the tree there was a little grey fat possum with glowing red eyes that popped out. He was eating.

Saturday was a hot day. We went for a walk. We saw some cows with baby calves, they were black and white and brown and white. After lunch we went to the museum, and on the way we saw a beehive. At the museum we saw lots of things in bottles and Mr. Weatherhead taught us how to blow a gum leaf to make music. He played a didgeridoo too. We saw a grey kangaroo in Mr. Weatherhead's paddock. We did a play at night called the Peacock Princess and saw some slides Miss Barr took of us on our last Pack holiday.

One night we were noisy after lights were out, and in the morning we gave ourselves 2nd class red stars for our charts. The next night we were very quiet and got 1st class gold stars.

On Sunday it was raining. We wrote letters to thank Mr. Hunt, the man who planned our house, and Mrs. Maskell, who is head of all the grown-ups who arranged it. We went for a walk and saw some geese near a pond. We wore rubber boots so we could walk in the puddles. During rest time we met one of our Region Commissioners, she came for a flagpole ceremony. The guiders from our guide company came at lunch time,

and they gave us all a chocolate koala at rest time.

One morning Margaret and Gaye got up early with Brown Owl and made morning tea; the next morning Jane and Sally did it. We had yummy desserts each night, we all liked a koala up a gum tree best.

Five Tweenies got enrolled before we came home. Our mothers and fathers came to get us and there was a hail storm, but they all took their muddy shoes off before they came inside.

We hope we can go back to our house soon. Brown Owl will type this for us as we have all written bits and it is rather hard to read.

Love from 5th Brighton Brownie Guides.

TYNONG CAMPSITE . . .

"I hope that all the times you have here will be fun", State Commissioner Mrs. Renshaw Jones told the Guides when she opened the new Campsite Building of the South Eastern and South Metropolitan Regions, at Tynong North.

The Brownies of 5th Brighton Pack certainly fulfilled her hope on their recent Pack Holiday at the house!

Guides of the two Regions have so far raised \$16,000 of the \$23,000 needed to build and equip the house — and they did that in 18 months. The building will accommodate 18 girls and six adult leaders. There is ample space on the site for outdoor camps, too, and a full range of camping equipment will be stored in the building as soon as funds permit.

It is an A-frame building, with an olive-green roof and timber end-walls blending almost completely into the bush. The six-acre site is rich in wildflowers and bird life, and there are many interesting things to see and do in the near surroundings — as the Brownies have said. The campsite is only 45 miles from Melbourne and can easily be reached after school on Friday afternoon.

—South Eastern and South Metropolitan
Regions Campsite Committee
Publicity Secretary:
Mrs. J. Thomas, Telephone 211 6500



CONGRATULATIONS to the recipients of the following:—

GUIDER LONG SERVICE:

25 years — Mrs. H. J. Lauder (1st Heathmont Coy.).

15 years — Mrs. E. Porter (1st Hazelwood Pack); Mrs. F. Hodder (Pascoe Vale); Mrs. B. Matthews (Mildura); Mrs. J. I. Brown (3rd Doncaster Coy.).

COMBINED LONG SERVICE:

Mrs. I. M. Bridge (Eastern Suburbs Trefoil Guild); Mrs. G. A. Soderlund (Manningham Road Division).

LOCAL ASSOCIATION LONG SERVICE:

Mrs. D. Wilson (Bentleigh).

THANKS BADGE:

Mr. L. Hansen (Altona); Mr. W. Little (Wantirna South).

APPOINTMENTS AND WARRANTS

A warm welcome is extended to the following:—

DISTRICT COMMISSIONERS:

Mrs. R. R. A. Anderson, Lang Lang; Mrs. L. J. Stevens, Ballarat North; Mrs. M. C. Young, Patchewollock; Mrs. A. L. Gould, Birchip; Mrs. I. W. Spowart, St. Arnaud; Mrs. R. T. Brooks, Keysborough; Mrs. J. L. Crompton (Assistant) Ferntree Gully.

RANGER GUIDERS:

Mrs. G. Farrington, Blackburn South; Miss K. C. Patterson, Syndal North; Mrs. V. C. Asbury, A. R. F. Southern Cross 11; Mrs. C. Morcom, S.R.S. "Invincible".

ASSISTANT RANGER GUIDERS:

Miss T. Hodgens, 1st Blackburn South; Miss L. Anderson, 1st Melbourne (Ext.); Mrs. J. Feakes, S.R.S. "Melbourne".

GUIDE GUIDERS:

Mrs. C. W. Butler, 1st North Fawkner; Mrs. R. Arnott, 1st Tanjil Valley; Mrs. K. D. Parker, 3rd Maryborough; Mrs. C. Begg, 1st Murchison; Mrs. B. C. Dawson, 8th Hawthorn; Mrs. W. G. Elliott, 1st Underbool; Mrs. M. Hunter, 1st Ouyen; Mrs. K. G. Harvey, 4th Mt. Waverley; Miss L. Amor, 1st Canterbury; Mrs. J. K. Adamson, 3rd Mt. Waverley; Mrs. R. C. Measham, 2nd Lara; Mrs. G. A. de Jong, 2nd Deepdene; Miss S. E. Cregan, 1st Lancefield; Mrs. I. Goodwin, 1st Maffra; Miss M. E. Wright, 1st Monbulk; Mrs. G. T. Clarke, 3rd Bendigo; Mrs. J. M. Grover, 1st Moyhu; Mrs. R. W. Llewellyn, 1st Heyfield; Mrs. A. F. Helyar, 1st Bannockburn; Mrs. K. E. Chapman, 1st Rupanyup.

ASSISTANT GUIDE GUIDERS:

Miss G. Kaye, 7th Ballarat; Mrs. W. Robertson, 1st Sydal North; Miss H. L. Wilkinson, 2nd North Balwyn; Mrs. N. Anderson, 1st Murchison; Miss J. M. Rogers, 1st Katandra West; Mrs. A. H. Bode, 1st Noble Park; Mrs. T. A. Devereaux, 3rd Springvale North; Miss L. Menzies, 7th Colac; Mrs. L. Riedel, 2nd Camberwell; Mrs. C. Eastham, 3rd Blackburn South; Miss P. M. Jamieson, 1st Newport; Mrs. D. Comery, 1st Tullamarine; Mrs. J. A. Thompson, 1st Ivanhoe; Miss C. J. Campbell, 1st Moyhu; Mrs. F. Webster, 6th Bendigo; Mrs. W. Greenwood, 2nd Central Doncaster.

BROWNIE GUIDERS:

Mrs. B. K. Nielsen, 3rd Blackburn South; Mrs. S. Tresise, 2nd Scoresby; Mrs. J. Innes, 1st North Fawkner; Mrs. A. W. Browning, 1st Tanjil Valley; Mrs. C. Warren, 1st Tyabb; Mrs. G. Stebbing, 1st Somerville; Mrs. K. Wilkie, 4th Dandenong; Mrs. C. Beaton, 1st Monbulk; Mrs. M. Heal, 1st Boronia; Mrs. L. White, 2nd Monbulk; Mrs. P. A. Daws, 3rd Templestowe; Mrs. E. Guy, 4th Ringwood; Mrs. J. A. Connor, 3rd Mt. Waverley; Mrs. J. R. Hooper, 2nd Newborough; Mrs. N. T. Cameron, 1st Pyramid Hill; Miss S. L. Williamson, 2nd Nunawading; Mrs. R. Earl, 1st Castlemaine; Mrs. M. A. Wilson, 3rd North Balwyn; Mrs. D. E. Butterworth, 1st Tullamarine; Miss R. Gleeson, 2nd Broadmeadows; Mrs. A. Bradfield, 8th Bendigo; Mrs. B. A. Norris, 2nd Mildura South; Mrs. J. Russell, 1st Upwey; Miss J. I. Bertram, 1st Avondale Heights; Mrs. E. F. Newton, 2nd Colac East; Mrs. F. T. Stephens, 1st Morwell; Mrs. L. Ferry, 1st Bannockburn; Miss B. Warwick, 1st Shelford; Mrs. S. C. Duver, 1st Willaura; Mrs. N. E. Tyshing, 1st Solway.

ASSISTANT BROWNIE GUIDERS:

Miss J. C. McMicking, 3rd Ballarat; Mrs. J. B. Allen, 1st Scoresby; Mrs. C. J. Hallam, 1st Tyabb; Miss J. G. Shepherd, 1st Somerville; Mrs. W. F. Strauss, 1st Rainbow; Mrs. R. G. Galloway, 1st Wonga Park; Mrs. E. M. McNaughton, 2nd Boronia; Mrs. W. F. Hodgson, 4th Ringwood; Mrs. M. J. Whitworth, 2nd Newborough; Mrs. J. Podger, 1st Syndal; Miss J. Pretty, 4th Box Hill; Miss R. A. Hitch, 4th Hawthorn; Mrs. G. Harvey, 1st Woorinen South; Mrs. G. T. Minster, 3rd West Doncaster; Mrs. K. Robinson, 1st Chiltern; Miss H. Bryant, 1st Timboon; Mrs. A. C. Stephen, 1st Koroit; Mrs. M. McClounan, 1st Hopetoun; Miss P. S. Talbot, 1st Solway.

* * * *

REGISTRATIONS:

2nd Scoresby Coy.; 2nd Scoresby Pack.

RETIREMENTS AND RESIGNATIONS

We acknowledge with gratitude the services given by the following whose Warrants have been returned:—

DIVISION COMMISSIONER:

Mrs. F. H. Morrall, Werribee-Altona.

DISTRICT COMMISSIONERS:

Mrs. F. C. N. Glanville, Ararat; Mrs. L. P. Hines, St. Arnaud; Mrs. K. R. Torode, Colac West; Mrs. A. V. Gumley, Pyramid Hill; Mrs. J. N. Muston, Katunga; Miss J. Mitchell, Armadale.

ASSISTANT RANGER GUIDER:

Mrs. J. Cowan, S.R.S. "Bataan 11".

GUIDE GUIDERS:

Mrs. E. Deeth, 1st Drysdale; Mrs. M. McDonald, 1st Tanjil Valley; Mrs. L. G. Swift, 2nd Oak Park; Mrs. G. L. Hannan, 1st Maryborough; Mrs. R. V. Dunlop, 2nd Swan Hill; Mrs. P. White, 1st East Bendigo; Miss S. M. Bullingham, 2nd Camperdown; Mrs. P. J. Reid, 2nd Kyabram; Mrs. J. R. Bell, 1st Lancefield; Mrs. L. A. Saligari, 1st Maffra; Mrs. D. W. Denniss, 2nd East Malvern; Miss E. Stevens, 4th Camberwell; Mrs. D. Burgdorf, 2nd Pascoe Vale.

ASSISTANT GUIDE GUIDERS:

Miss J. Lugton, 1st Central Doncaster; Mrs. L. J. Beales, 1st Seaholme; Mrs. J. Richardson, 1st "A" Sale; Miss H. Rowen, 1st Hastings; Miss R. J. Patman, 2nd Camperdown; Mrs. S. Rippon, 1st Camperdown; Miss J. Sealey, 3rd Syndal; Mrs. I. Goodwin, 1st Maffra; Miss S. E. Cregan, 1st Lancefield; Mrs. J. K. Adamson, 3rd Mt. Waverley; Miss L. Amor, 1st Canterbury; Mrs. C. Begg, 1st Murchison; Mrs. K. D. Parker, 3rd Maryborough; Mrs. J. M. Grover, 3rd Swan Hill.

BROWNIE GUIDERS:

Mrs. R. G. Gregory, 3rd Sale; Mrs. L. Fitzwilliam, 2nd Camperdown; Mrs. M. J. Pring, 4th Springvale North; Mrs. A. Hall, 5th Moorabbin South; Mrs. R. G. Haley, 5th Glen Waverley; Miss J. Kingman, 3rd Dandenong; Mrs. E. H. Parker, 2nd Parkmore; Mrs. B. Pimblett, 1st Mt. Waverley; Mrs. P. Gaston, 1st Tawonga; Mrs. R. Amott, 1st Tanjil Valley.

ASSISTANT BROWNIE GUIDERS:

Mrs. E. V. Start, 1st Crowlands; Mrs. K. P. Riddell, 4th Brighton; Mrs. J. P. Richards, 7th Colac; Mrs. J. Millington, 2nd Red Hill; Mrs. F. L. Lake, 3rd Merbein; Mrs. A. Smale, 1st Yarrowonga; Miss S. L. Williamson, 2nd Nunawading; Mrs. J. R. Hooper, 2nd Newborough; Mrs. J. A. Connor, 3rd Mt. Waverley; Mrs. L. White, 1st Monbulk; Mrs. M. Heal, 1st Boronia; Mrs. C. Beaton, 2nd Monbulk; Mrs. A. W. Browning, 1st Tanjil Valley; Miss S. Beasv, 2nd Simpson; Mrs. B. A. Norris, 2nd Mildura South.

CORRECTION:

We regret that in May "Matilda" the warrant cancellation appeared of Mrs. C. J. Mitchell, Assistant Guide Guider, 2nd Mt. Waverley Coy. This should have read, Mrs. P. J. Mitchell, Guide Guider of 3rd Mt. Waverley Coy.

Comment by the State Commissioner at a recent Executive meeting, when discussing Mutual Aid projects:

"Of course the Afghanistan bus went because we all pushed it!"

Let it be hoped that the bus went well without such remote control!



BARWON HEADS OCEAN GROVE

Many parents and friends were present at a very special evening in the Scout Hall, Ocean Grove.

1st Ocean Grove brownies were joined by several guides from the Ocean Grove companies.

Four new brownie guides were led along the "Brownie Way". A "Going-up Ceremony" followed when three brownies stepped up to "Guide Land" to become members of 2nd Ocean Grove Company. There was a presentation of Patrol Leader Stripes, a Service Flash, interest badges and Eight Point badges.

The Division Commissioner then introduced Mrs. Urquhart, who was the first District Commissioner. Mrs. Urquhart spoke of the commencement of Guiding in the District and said how pleasing it was to see the greatly increased number of girls in the movement and so many interested parents and friends in attendance.

Mrs. Joyce Davis (Tawny Owl in 2nd Ocean Grove Brownie Pack) then received her 15 years service ribbon. Mrs. Davis gave service to 1st Ocean Grove Brownie Pack for two years before being enrolled. She and Mrs. Emselle (Brown Owl) have been together with this pack for over 17 years. Several from the original Brownie Pack were present.

Brownie guides and guides sat around a log fire and sang campfire songs and rounds.

The evening ended with Taps.

* * * *

A SAFETY THOUGHT FOR US ALL . . .

Dim unto others as you would have them dim unto you.

One thing to be thankful for is that some people do their worst driving on the golf course.

A safety sign can't talk, but it isn't so dumb as the fellow who disregards it.

The driver is safest when the roads are dry;
The roads are safer when the driver is dry.