

# MATILDA

1900-1901



**NOTICE BOARD AT CAMP WIRREANDA, DIMBOOLA**  
(Block by courtesy of "Dimboola Banner")

Dear Members and Friends,

Autumn is a time of year I enjoy—so many of the trees are changing colour and after some welcome rain the paddocks at Glenaroua are rapidly becoming green.

This month began with a most interesting meeting—The Trustees of the Australian Staff Superannuation Fund—Miss Cooper very kindly invited me to attend and we were delighted to have Miss Lambie (Chief Commissioner), Miss Mitchell (Australian Secretary) and Miss Pattison (Australian Treasurer) in Victoria.

At State Council we heard an interesting account from Robin Jones of Youth 2004 and finished the meeting by dividing the Council into groups to discuss the problems facing the Guide Movement in this day and age. This was found interesting by all present.

The Australian Asian Association held their Annual Meeting followed by luncheon at Headquarters the following day. I found the meeting most interesting and was pleased to meet members of this group. Our Special Activities Committee provided a delicious luncheon under great difficulties, as our kitchen was still being altered.

It was good to see the Region Commissioners at our first meeting for the year—unfortunately several regions are still without Region Commissioners, but we hope this will be remedied soon.

Following this meeting Peg Barr had a dinner at her home for the “Weekly Meeting” to celebrate my rather special birthday which was earlier in the week—it was great fun and I felt very spoilt.

Elizabeth Cook, a member of State Council and active Guider, accompanied me to the Reception in honour of Lady Delacombe given by Mrs. Hamer. This was attended by representatives of all those organisations of which Lady Delacombe has been President or Patroness during her stay in Victoria.

Lady Delacombe was presented with a very beautiful gold and diamond brooch and a scroll inscribed with the names of all these organisations.

Camp Wirreanda was a great success—the one held at Britannia Park and those held throughout the State—all reports seem very favourable. I was present at Britannia Park for the closing ceremony and after a perfect week-end it poured with rain; we all got



**From our State  
Commissioner**

rather damp, but I am sure it helped all the trees that were planted.

I had a very quick flight to Hamilton for the night to meet with Division Commissioners from Western Border. The best way I can gain a clearer picture of some of the problems facing these more remote regions is to visit them myself. I only wish I could have stayed longer.

Our Guide Association farewell to our wonderful President, Lady Delacombe, was a great success. A perfect late afternoon, a magnificent setting on the lawns of Government House and lots and lots of our members. Thanks to everyone who had worked so hard, everything ran very smoothly and we all had a very happy time. Lady Delacombe was most impressed with the items presented by the three Sections and very thrilled with the water colour of the Wimmera District we gave her. It was impossible for me to express adequately our appreciation for her friendship and interest and all she has done for us in the past 11 years.

Fred and I returned to Government House that evening for a most exciting Reception and dancing given by the Governor and Lady Delacombe. It was a wonderful sight to see people dancing in that magnificent ballroom.

I snatched a few minutes from the family to visit the Ranger Regatta—ideal weather made it a very successful week-end.

We were all deeply saddened by the death of our beloved Rene Fairbairn. Gran, as she was called by so many, was a person of great love and understanding who had given a lifetime of service to the Guide Movement, and Australian Guiding owes her so very much. Miss Lambie, the Chief Commissioner, read the lesson at the Funeral Service, which concluded with all those in Guide uniform singing Taps.

(Continued on page 227)

# MATILDA

PUBLISHED BY THE GIRL GUIDES ASSOCIATION OF VICTORIA  
20 RUSSELL STREET, MELBOURNE, VICTORIA, AUSTRALIA, 3000

State Commissioner: MRS. F. S. GRIMWADE

State Secretary: MISS M. W. BARR

Assistant State Commissioners: MRS. D. O. OLDFIELD

MRS. A. J. TURNBULL

Editor: MISS MARGARET SHAW



## CAMP WIRREANDA . . . Camp of the Tall Trees

Sherbrook River site saw forty-one Guides from twenty-eight districts camped together for Camp Wirreanda. Some had travelled over two hundred miles to participate.

Rope ladders, stretchers, gadgets of all kinds, message relaying devices were made and invented and the skies were scanned for constellations—all part of the challenge involving Matthew Flinders, who was being honoured throughout the State for his explorations in Australian waters.

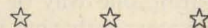
A Wirreanda garden was planted here, too—twenty-eight native trees. One of the highlights of the camp was the camp fire held at the mouth of the Sherbrook River on the sand. With a full moon above and the silvery sea in front, we all agreed it was a night not to be forgotten.

(From stories—"Colac Herald" and "Cobden Times.")

The guides of Barree Region took part in Camp Wirreanda, our camp being held at Tawonga. As we all live miles apart we met in our patrols when we arrived at the camp site.

Our P.L. was brilliant; she invented a frame to carry billies of water on your head. It works well if you do not laugh! We made stretchers as a challenge and then slept in them under the stars. It was the best sleep in camp I had, and the Guiders who came to look said we slept like logs! They nicknamed us "Wirreanda Wonders." It was a great camp.

Celia Embury, 2nd Wodonga Guides.



One Saturday I went to the Brownie Hut at Toorak College to meet with the patrol I was going to be in for Camp Wirreanda.

First we fixed up the equipment we would be taking and talked about what we were

going to eat. We had to cook our own food at the Camp and take turns at cooking, so we made up a duty roster.

We got a tent up—it took us twenty to thirty minutes. Then we took the tent down—five minutes to take it down and folding it took us another five minutes.

Kiwi showed us how to make a rotary clothes line out of three thin tree branches about four feet long.

Helene Nicholls,  
3rd Frankston Company.

Camp "Wirreanda" held at Arura, Dimboola, was an **undoubted success**.

The whole week-end was real Wimmera Summer weather; fortunately not a declared fire ban. We are fortunate and have a shelter shed with a large stove so the mid-day meal was cooked in there for safety's sake.

The combined meal served to unite the camp and on the Sunday we were fortunate to have our Region Division and District Commissioners as guests for lunch.

Breakfast and evening meals were in patrols.

Prior to the camp the Patrols chose their names from something appertaining to Matthew Flinders or his journeys—they came up with "Australis," "Bass," "Cumberland," "Discovery," "Encounter Bay" and "Fur-neaux Islands."

It was a very happy camp and they all worked with a will, thoroughly enjoyed the challenges and the stories of Flinders. Uses of the challenges were told at Campfire and there was a camp song to the tune of Frere Jacque—each Patrol added verses.

Guides Own, based on the Creation, was held at the outdoor chapel. The girls planned this themselves, one lass had a guitar and accompanied "Morning has Broken"—the setting with reflections on the billabong and the bird songs was something to be remembered.

Tree planting was performed with full ceremony on Sunday afternoon—with all the camp participating one way or another: digging, carrying water, gathering humus, planting and filling in, and finally, watering. We had a special prayer written and read to complete the ceremony.

Before the close of camp we presented the badges and the service citations, and

the guides had worked hard to make the camp-site clean and tidy. They were a credit to the Companies they represented: Dimboola, Horsham, Jeparit, Nhill, Rainbow, Donald, Charlton, St. Arnaud, Birchip, Hoptoun, Sea Lake, Warracknabeal, Rupanyup, Wedderburn.

☆ ☆ ☆

From our experienced campers to our new campers, Camp Wirreanda is a name they should remember for a long time. Whether they are the patrols who gathered together at their country region camp sites, or the metropolitan patrols who camped at Britannia Park, the getting together, learning, participating in the Matthew Flinders Challenges and having fun, was well worthwhile. . . .

Where has the Southern Cross gone to?

What does Orion look like?

How many sick patients fell through the improvised stretcher?

Oh well, just as well there was a First Aider handy.

For all the girls who shared in it, planting a tree as a lasting recognition of the work and time given to Victoria by our former State Commissioner, Mrs. Renshaw Jones, and her team, must truly keep Wirreanda alive. After all, Wirreanda means "TALL TREES," and that is the hope of all those girls who selected and carefully tended their tree during their stay in camp—that they will indeed grow tall. Next time you visit your campsite see if you can find where your Wirreanda Garden has taken shape. At Britannia Park you can have only one clue . . . "Brooks Site."

Congratulations to all the girls and leaders who took part in this challenging week-end.

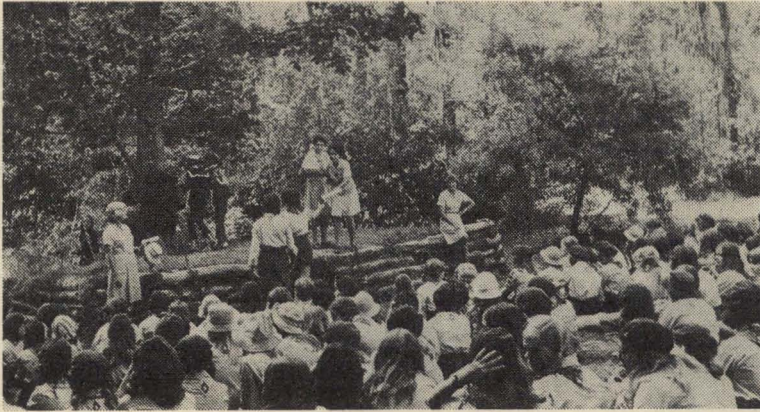
☆ ☆ ☆

Come on, own up, who sang "Johnny Appleseed" at Camp Wirreanda?

A Guider mum who was drenched.

Yes—it rained so heavily during the closing ceremony at Britannia Park. Did you know the reputation of "Johnny Appleseed"?





(Above)  
**The State Commissioner  
closes Camp Wirreanda at  
Britannia Park.**

(Photo: Mr. F. Bates)

(Below)

**Planting tall trees at Arura  
Campsite, Dimboola.**

(Block by courtesy of  
"Dimboola Banner".)

**Wimmera "Wirreanda"  
Tree Prayer:**

O God, make the trunks of these trees straight and strong like the pathway to your heart; the branches wide enough to give shelter and protection to those who seek it; and the leaves fresh and carefree like the faces of your children.

Lord, we also thank you for your creations, and we trust that you will watch over them with love and a smiling face as you recall the love and friendship that surrounded them as they were planted.

Thank you, too, for the sunshine and the rain and numerous gifts that you provide for their growth. Amen.





At Camp Wirreanda at  
Britannia Park  
(left to right)  
Mrs. C. Renshaw Jones  
Mrs. Y. Kirkman  
Mrs. D. Hutchinson  
Miss M. Shaw  
Mrs. N. Squire  
meet the guides

### CAMP WIRREANDA, CHALLENGE CAMPS

It was very gratifying to Miss Shaw, Mrs. Kirkman, Mrs. Hutchinson and me to know that part of the Movement's wonderful gift made to mark our terms of office which concluded last year, was used to help so many girls enjoy Camp Wirreanda. Although not able to visit the groups in Country Regions, we took the opportunity to share in some of the activities with representatives of Metropolitan Regions in camp at Britannia Park. We each planted our chosen tree and trust that they, and those planted by patrols in Camp Wirreanda throughout the State, will flourish and bring beauty and usefulness to Victoria.

It was splendid to observe how the experienced campers gave encouragement and assistance to those who were attending their first camp—no doubt now eager to further their knowledge and share it with other "first timers."

We hope that all who participated in Camp Wirreanda had an interesting and enjoyable week-end.

*Charlotte Renshaw Jones.*

\* \* \* \*

Brownie to busy Mum: "Mummy, how long will Daddy be away?"

Mum: "Three or four days."

Brownie: "That's not much of a holiday is it?"

Mum: "Oh, I think a few days off would be quite nice."

Brownie (very indignant): "Ooh, Mummy, how mean. You will be having a whole week off, **doing nothing** when you take the guides to camp."

---

### WORLD SCOUTING NEWS . . .

**Sri Lanka (Ceylon).**—Aware of the community service and development emphases of Ceylonese Scouting, a woman well-wisher has given an acre of land with five buildings in the city of Colombo to Scouting so that the rental income from the property can be used for the development of Scouting in rural areas.

**United States.**—When a toy company in Denver rejected certain parts of a plastic toy called "Noah's Ark," Cub Pack 570 heard about it and investigated. They discovered that one part, the deck cabin, could be converted into birdhouses. Altogether they built 300 birdhouses which they hung near homes for the elderly.

—from "Boy's Life."

**Canada.**—Fifty Scouts of Calgary performed an unusual community service recently when it was decided to replace the old grandstand for the famous "Calgary Stampede" annual wild west show. The Scouts undertook to remove the 8,300 plastic seats which will be used in the new grandstand. They did the job between 06.00 hours and 14.00 hours, and moved the seats to a storage area.

**Iran.**—As part of their Community Development Services the Scouts and Guides planted one million trees last year on streets, parks, campsites and Scout grounds. Planting of another million is planned for this year.

—from the "World Scouting" Newsletter.

## THE STATE COMMISSIONER

(continued from page 222)

North Balwyn District invited me to their Annual Meeting which was great fun. The hall was packed with adults and children and after the business part of the meeting, each of the units entertained us. I was delighted to see the wonderful feeling of vitality and enthusiasm in this district.

Our Executive Meeting this month was longer than usual, mainly because of the Australian Executive Agenda. After about three hours it becomes hard to concentrate!

I was pleased to be able to tell Executive that Lady Winneke had agreed to become our State President following Lady Delacombe's departure.

Mrs. Renshaw Jones very kindly asked me to represent you all at her investiture at Government House. It was an impressive occasion to see so many people receive recognition from the Queen for their service to their State.

After the Garden Party that afternoon I attended a meeting of the Brownie Guide Section Committee—it was good to meet the members who do so much for this Section.

Ann is now a Lone Guide and came to the Youth Garden Party with me. We, along with my 650 other girls, enjoyed it very much. I think all the children felt sad to think this was the last Garden Party to be given by Sir Rohan and Lady Delacombe.

Ann and I then went down to the river to watch the rowing. Rick unfortunately broke his seat and his crew came second. I am sure many of you are at present enjoying watching your sons row.

The Lady Delacombe Cup Golf Day was again a great success thanks to Mrs. Carlyon and her Committee. In spite of a very busy day, Lady Delacombe came to present the Cup for the last time. The Committee gave her a salver similar to those awarded as prizes each year, which thrilled her greatly. We are delighted to think that the Lady Delacombe Cup will continue to be awarded for many years to come.

This letter seems to have gone on for ages—but as you can see I am settling down to work. This month you will find your newsletter in the centre of "Matilda." I hope you like this idea and find it helpful.

With love and best wishes,

*Joan E. Grimwade*

## "KEEPING TRACK" . . . AUSTRALIA

An Australian newsletter . . . with the name suggested by Victoria.

It is hoped that the newsletter, of which Mrs. Margaret Curtis-Otter is Editor, "will take us one step further towards looking at our national picture of Guiding, and will remind us that, whilst Guiding in the States is the grass roots, it must be run side by side with our National Association if we are to fulfil our rightful place in World Guiding."

## A CAMP WITH A DIFFERENCE

A Guider always learns something new every time she goes to camp, and Mrs. Margaret Frame, Acting Ranger Leader at Galwinkie, Elcho Island, certainly had an interesting time when she went with the Mission Guides and Rangers on their camp in July. She writes: "I have camped in many places with different aged girls, here and in Great Britain, and I must admit I have enjoyed this last camp perhaps best of all. I really felt the girls taught me more than I taught them, and it was indeed a very happy camp."

The Guides and Rangers had been learning square and diagonal lashing before going to camp and were very proud of the stands they made which were strong enough to hold the wash-up bowls for the whole camp. Cooking outdoors was no challenge whatsoever; and at low tide the girls collected oysters from among the rocks and served them for High Tea on Sunday evening. Monday was spent in the bush collecting samples of native food to be sent to the Perth Laboratories for testing for nutritional value studies. The Guides searched for and collected the fruit and roots, carefully labelled and packed them by themselves, and sent them off to Perth—effective service by the Guides and Rangers, using their own special skills and ability and learning new ones to complete the job. There was a campfire at night on the beach, and a Guides' Own service on the Sunday, and any spare time was taken up with fishing, swimming and their own camp version of soft-ball—a happy camp for everyone.

(From "Adventuring"—South Australia.)

(I wonder how many readers know just where Elcho Island is?—Editor.)

## **GIRL GUIDES OF AUSTRALIA DISCOVERIES (3) THEY MET THEIR HERO-LEADER, 1912 . . .**

"The Mercury", Hobart, 7th June 1912:

Sir Robert Baden-Powell will be remembered in the generations to come, not as the man that fought the Matabele, or that defended Mafeking, but as the man that filled the world with Boy Scouts.

His work as a soldier was merely a preparation, the necessary experience and training, for the beneficent work in which he is now engaged . . . though now just beginning . . . "

A biography of Baden-Powell is called "Two Lives of a Hero".

During the war in South Africa, that had ended in 1902, already a Colonel with a distinguished record, he had defended the town of Mafeking for 217 days against armed forces of the Republic of the Transvaal (Boers), far greater than his own. At the news that a British Relief Force had won through to Mafeking, wild enthusiasm exploded. Australians were preparing to welcome a national hero who had fired the imagination of the Empire.

The insight of "Mercury" was needed to help them discover that by 1912 Baden-Powell was completely involved in a different, his "second" life.

The Founder and Chief of the Boy Scout Movement was travelling round the world to visit and inspire Boy Scouts in West Indies, U.S.A., Japan, China, New Zealand . . .

By the time Baden-Powell left Australia, the editor might have added "Girl Guides" to his prophecy, as, to the surprised discovery of press and public, they took their part in occasions of the visit, in the four States in which companies had started.

21st May: "In Sydney inspected Girl Aids under Mrs. Dixon, who gave me a flag for the Girl Guides of England." (B.P.'s diary.) The flag was presented to a company in Birmingham.

One hundred Girl Aids joined the Boy Scout rally at Cook River and were commended for outdoor cooking and first aid.

The Hobart rally was for Scouts and Guides, who were photographed for the weekly papers.

In Launceston, the Patrol of the North could not join in without an adult Leader,

but a volunteer responded to a request in the newspaper. The stretcher they demonstrated was described by Baden-Powell with his own sketch to illustrate, and sent to the English Scout magazine.

In Victoria, Miss Gipps' groups had become Girl Guides by early 1911, and her warrant was dated from London, April, 1912.

The Committee that supported her arranged a parade for Baden-Powell's visit at the Fire Brigade Station on Eastern Hill. The Governor and Lady Fuller and their children attended.

The Press, 14th June:

"The troops presented were 1st Melbourne, 1st North Melbourne, and 1st Hawthorn, under Miss Gipps and Miss Kerr. At the conclusion of the parade the Chief addressed the girls and complimented them on their smart appearance."

"B.P.'s Diary and letter:

"I advised them to put their good turns into practice by helping their mothers at home.

"I told the Guide Leaders privately to get a committee of leading ladies to give them a common head and local backing . . . "

After the inspection, firemen showed the Guides over the Fire Station. One rose to a "dare" and slid down the polished pole from dormitory to fire-engine, that the men used within seconds of an alarm.

At a public meeting where the Guiders and committee helped with the arrangements, Baden-Powell said: "The Girl Guide Movement is only beginning in this country, but it is a Movement I can recommend to all; I ask that those who find any good in the Boy Scout Movement support it."

In South Australia, two companies were active; they presented a flag for the Girl Guides of England, and Baden-Powell discussed with Leaders whether to form a national Association or register as a branch of the British Movement.

The Chief Scout's visit might have strengthened a link between the Guides of the States; he left an inspiration to all as he travelled on through Africa and home to his wedding in October with Miss Olave St. Claire Soames. But World War I soon came crashing in.

G. H. SWINBURNE,  
Archivist, G.G.A., Australia.



## TRAINING CALENDAR, MAY, 1974

Commissioners and Unit Leaders with the necessary experience are welcome to apply for **any** training.

Applications to be sent as directed by the date requested and should be accompanied by the training fee and a stamped, self-addressed envelope. Training fees are \$1.00 unless otherwise stated.

### Stage 1 Training—for Leaders new to the Movement.

**Bentleigh:** 11th-25th September; 2nd-9th-16th October, 7.30 p.m. to 9.30 p.m.; 14th-15th September, 10.00 a.m. to 4.00 p.m., Methodist Church Hall. Applications to Mrs. A. Watsford, 6 Millis Avenue, East Bentleigh, 3165. Closing date: **29th August**.

**Cheltenham:** 17th-24th June; 1st-8th-15th-22nd July, 10.00 a.m. to 2.30 p.m., Guide Hall, Glebe Avenue. Applications to Mrs. A. Watsford, 6 Millis Avenue, East Bentleigh, 3165. Closing date: **3rd June**.

**Headquarters:** 19th-26th June; 3rd-10th-17th July, 10.00 a.m. to 3.00 p.m. Applications to Training Department, 20 Russell Street, Melbourne. Closing date: **7th June**.

**Kyabram:** 1st-2nd June and 22nd-23rd June, 10.00 a.m. to 4.00 p.m., Guide Hall. Applications to Mrs. J. R. Murphy, Box 874, Shepparton, 3630. Closing date: **18th May**.

**Upwey:** 28th May; 4th-11th-18th-25th June; 2nd-9th-16th July, 7.00 p.m. to 10.00 p.m., Guide Hall. Applications to Mrs. R. James, "Nigabinda," Stud Road, Scoresby, 3179. Closing date: **14th May**.

**Violet Town:** 8th-9th June and 22nd-23rd June, 10.00 a.m. to 4.00 p.m. Applications to Mrs. H. Purcell, "Outlook," Smith Street, Yea, 3717. Closing date: **27th May**.

**Barree Region:** 22nd-23rd June and 6th-7th July. Further information from Mrs. D. Hamilton, "Hamilton Park," South Wangeratta, 3677.

**Dandenong Region:** 13th-14th July and 10th-11th August. Further information from Mrs. M. Smith, 6 Jeffrey Street, Dandenong, 3175.

**Western Border Region:** 17th-18th August and 21st-22nd September, 10 a.m. to 4.00 p.m. Further information from Mrs. D. Maconachie, 372 North Boundary Road, Hamilton, 3300.

☆ ☆ ☆

### Stage 2 Training—for Warranted Leaders

Please note: Stage 2 Training is planned around topics and help requested prior to the course by those taking part. Requests for training are to be forwarded with application forms to Region Training Advisers before the closing date.

**Bendigo:** 6th-7th July; 3rd-4th August, 10.00 a.m. to 4.00 p.m. (please bring lunch). Applications to Mrs. R. Wilkins, 14 Scott Street, White Hills, 3550. Closing date: **21st June**.

**Cheltenham:** 28th May; 4th-11th-18th-25th June, 10.00 a.m. to 3.00 p.m. Applications to Mrs. A. Watsford, 6 Millis Avenue, East Bentleigh, 3165. Closing date: **10th May**.

**Doveton:** 29th - 30th June; 27th - 28th July, 10.00 a.m. to 4.00 p.m., Presbyterian Kindergarten, Ti Tree Drive. Applications to Mrs. M. Smith, 6 Jeffrey Street, Dandenong, 3175. Closing date: **14th June**.

**Mildura:** 8th-9th June; 13th-14th July, 10.00 a.m. to 4.00 p.m. Applications to Mrs. B. Hocking, 812 14th Street, Mildura, 3500. Closing date: **24th May**.

**Seymour:** 8th-9th June; 6th-7th July, 10.00 a.m. to 4.00 p.m. Applications to Mrs. H. Purcell, "Outlook," Smith Street, Yea, 3717. Closing date: **27th May**.

**Surrey Hills:** 2nd-9th-16th-23rd-30th July, 10.00 a.m. to 3.00 p.m., Holy Trinity, Union Road. Applications to Mrs. F. Ludbrook, 5 Curnola Avenue, Doncaster, 3108. Closing date: **18th June**.

### Stage 3 Training—for Warranted Leaders

**Dandenong:** 21st-22nd September; 12th-13th October (dates subject to change), 10.00 a.m. to 4.00 p.m. Applications to Mrs. M. Smith, 6 Jeffrey Street, Dandenong, 3175. Closing date: **6th September**.

**Headquarters:** 22nd-23rd June; 13th-27th July, 10.00 a.m. to 4.30 p.m. Applications to Training Dept., 20 Russell Street, Melbourne, 3000. Closing date: **7th June**.

**Mildura:** 14th-15th September; second week-end to be advised. Applications to Mrs. B. Hocking, 812 14th Street, Mildura, 3500. Closing date: **30th August**.

**Northcote:** 28th May; 4th - 11th - 18th - 25th June, 10.00 a.m. to 3.00 p.m. Applications to Mrs. N. Dean, 33 McKellar Street, Watsonia, 3088. Closing date: **14th May**.

### **Pack Holiday Training**

**Essendon:** 22nd-29th May; 5th-12th June, 7.30 p.m. to 10.00 p.m., Methodist Church Hall, Mt. Alexander Road. Applications to Training Department, 20 Russell Street, Melbourne, 3000. Closing date: **8th May.**

**Tynong North:** 12th-14th July, 6.00 p.m. Friday, till 3.00 p.m., Sunday. Cost, approximately \$5.00. Applications to Mrs. A. Watsford, 6 Millis Avenue, East Bentleigh, 3165. Closing date: **28th June.**

**Western Border Region:** 17th-18th August, 10.00 a.m. to 8.30 p.m., Saturday; 10.00 a.m. to 3.30 p.m., Sunday. Further information from Mrs. D. Maconachie, 372 North Boundary Road, Hamilton, 3300.

### **Campcraft Training**

**Cheltenham:** 13th-20th September; 11th October, 7.30 p.m. to 9.30 p.m., Saturday; 21st-28th September, 10.00 a.m. to 2.30 p.m.; week-end 5th-6th October. Further information from Mrs. A. Watsford, 6 Millis Avenue, East Bentleigh, 3165.

**Essendon and Britannia Park:** 26th June; 3rd-10th July, 7.00 p.m. till 10.00 p.m., Methodist Church Hall, Mt. Alexander Road; week-ends 6th-7th July and 3rd-4th August, times to be advised, Britannia Park. (Fee for week-end to be advised.) Applications to Miss J. Mills, c/o Nurses' Home, P.A.N.-C.H., Bell Street, Preston, 3072. Closing date: **10th June.**

**Western Border Region:** 14th-15th September and 5th-6th October, 10.00 a.m. to 4.00 p.m. daily; 19th-20th October, 10.00 a.m., Saturday, till 4.00 p.m., Sunday. Further information from Mrs. D. Maconachie, 372 North Boundary Road, Hamilton, 3300.

### **Special Subjects**

**Burnett Park, Glengarry, Q.M. Training:** 25th-26th May, 10.00 a.m., Saturday, till 4.00 p.m., Sunday. Fee, \$1.00, plus \$4.00 residential fee. Applications to Mrs. S. McDonald, 27 Tovell Street, Newborough, 3828. Closing date: **11th May.**

**Headquarters, Special Subjects for BROWNIE Guiders.** Programming for the Pack, including games and activities to help Brownies meet the challenge of the eight-point programme. 30th May, 6th June and subject to interest of Guiders, 13th June, 10.00 a.m. to 3.00 p.m. Fee, 75 cents. Note: Applications should include requests based on the current interests and needs of your Brownies

and must be received by the Training Department by 9th May. Applications and requests to Training Department, 20 Russell Street, Melbourne. Closing date: **9th May.**

**Headquarters, Training Day for L.A. Office-bearers.** As a result of requests received we will be holding a Training Day at Guide Headquarters on Wednesday, 7th August, from 10.00 a.m. to 2.00 p.m. (Please bring lunch.) Please write to the Training Department by **26th July** next and advise names and address of those wishing to attend.

**Warragul, Bushcraft Day:** 1st June, 10.00 a.m. to 4.00 p.m., Brogie Park. (Please bring Barbecue lunch.) Applications to Mrs. S. McDonald, 27 Tovell Street, Newborough, 3828. Closing date: **18th May.**



### **OVERNIGHT HIKE TO TARLI KARNG**

Imagine a Guides' Own held by the edge of a calm, peaceful Lake Tarli Karng in the mountains of Gippsland, the Guides' singing breakfast, the absolute quiet. Follow this with a walk to a waterfall, turbulent by contrast. Then a steep climb of two hours back to camp. After lunch, and striking tents in a shower of rain, a further six-mile hike through snow gums, their beautiful smooth grey trunks splashed with yellows, orange, reds and green. The mist descending before the cars were reached, then a journey of seventy-six miles through the mountains back to Heyfield, and you have some idea of a wonderful overnight hike enjoyed by fourteen Guides of 1st Heyfield Company one week-end recently.

A District Commissioner and two Guide fathers, all keen bushfolk, and a friend with a land-rover to transport our gear, made all this possible. Enjoying the out-of-doors, challenges of determination, endurance and perseverance well met by all the Guides gave us a never-to-be-forgotten adventure in some of our most beautiful country.

—B. L.

MATILDA

# TRAINING PAGES

One of the great strengths of our Guide Movement over other girls' club and activity groups—is that besides our solid foundation of Law and Promise—we are an International Movement.

You and I have sister Guides in 57 countries which are Full Members of the World Association of Girl Guides and Girl Scouts (W.A.G.G.S.) and no less than 33 which are Associate Members, looking forward to the day when their Association is strong enough to become accepted into full membership.

Do the girls in your Unit know this?

This month "Matilda" presents ideas and activities to increase their interest in—and knowledge of—their counterparts in other countries.

Please—please—please do not think "internationally" only on 22nd February. When planning with your P.L.'s long-term programme (see page 83, "Matilda," October, 1973), try to include an International activity of some kind once per term—or oftener if your girls show particular interest.

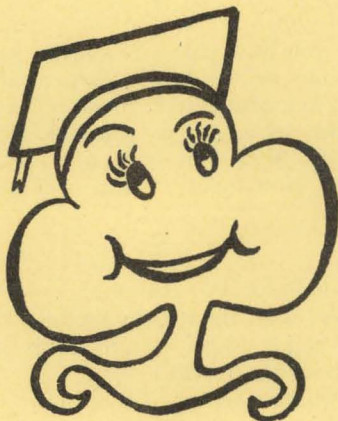


Sue asks:

Do you get and FILE "Matilda"?

Sue pleads:

DO make and KEEP a good resolution, to FILE it and REFER to it and see your assistants join you.



Page 109 of "Matilda," November, 1972, will give you the list of countries (Zaire has since had to withdraw), and if you get the "Council Fire" the inside front cover will always give you the up-to-the-minute list of members of W.A.G.G.S. ("Council Fire" can be ordered through Gordon and Gotch. It is a quarterly magazine of World Guide news, issued by the World Bureau, mostly written in English—some in French but with an English summary which helps.)

Sue defies anybody from Brownie age up not to find something of interest in each issue.

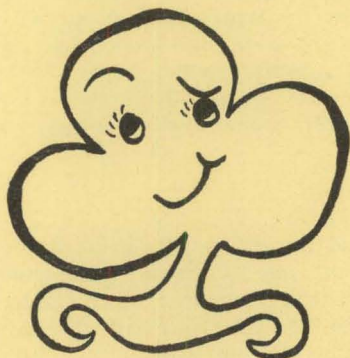
## Idea 1

An end-of-meeting-while-in-circle idea I enjoyed at one Company (internationally minded) which I visited: Each Guide (Brownies could do this too) said the name of a country which had Guides . . . all had to listen carefully, and think hard if far round from the first to speak, because no country's name could be said twice! Then a quiet remark—"And they all sing Taps too—same tune as ours, but of course it sounds different in their language." The final Taps had a special significance after that.

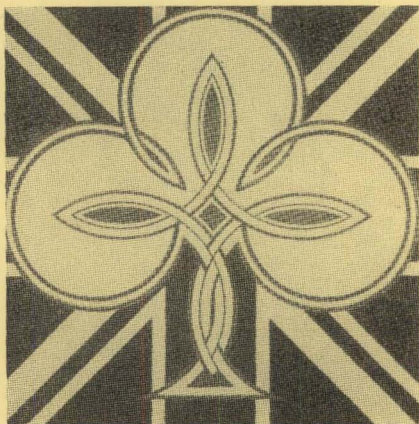
## TREFOIL ROUND THE WORLD

Obtainable at the Guide Shop—a treasure trove of ideas, my copy marked \$1.20.

There is a new edition of this book every three years, compiled after a World Conference, and containing up-to-date news of all countries of the W.A.G.G.G.S. (Older editions are therefore now in parts obsolete—but if companies have used them as often as “Matilda” would like them to do they are falling to bits and ready for replacement anyway.)



Sue here prodded me and whispered, “Tell them about World Conferences.” These are held every three years, and all countries of W.A.G.G.G.S. send delegates (one or two) and may send some visitors as observers. The last was in June, 1972, at York University at Toronto, Canada; the next is planned for June, 1975, at Sussex University in England.



### Idea 2:

This is a patrol activity which could take at least an hour of a unit meeting.

Patrol Leaders could be asked the week before to bring some of the following requirements:

World Map or Atlas per patrol.

Paper (butcher's paper would do).

Coloured crayons or textacolors.

Guider or her assistant might try to obtain sheet showing flags of various countries (some atlases have these), coloured scraps of crepe paper or cloth, pipe cleaners, light cardboard.

### Patrol Instructions:

Plan a trip in the Asia-Pacific area—from Australia and return, visiting ten countries having Guides. Each member of the patrol will share in your report and display to the rest of the Company in (say) three-quarter hour's time.

- (a) Outline the trip, and the countries in the order visited, on the map. Say whether a full member or Associate member of W.A.G.G.G.S.
- (b) Make, or draw something about Guides in any three of the countries visited. (Could be the uniform, their badge, the flag to which they show their loyalty, etc.)
- (c) Make from materials provided articles which would serve as souvenirs from any three of the countries visited.

Variations to the above could be:

A world trip—instead of Asia-Pacific area.

Visit to a set number of Commonwealth countries if members of your unit are interested in Commonwealth Knowledge badge.



### Idea 3:

Have you ever pleased (and/or surprised) a Brownie or Guide or Ranger, after pinning on her badge at Promise or Investiture ceremony, by saying as you welcome her to the Unit: “Now you have over six million sisters”? Now never? Why not try it?



### Idea 4:

Suggestions for P.L. training:

Discuss with them (see Trefoil Round the World, pages 18-21) the Symbols of Unity throughout the world.

- (a) Promise and the Guide Laws.
- (b) Trefoil in the Badge.

- (c) All countries have a uniform (suited to own climate and conditions).
- (d) Good Turn.
- (e) World Flag.
- (f) World Badge.
- (g) Motto (they might enjoy writing down "Be Prepared" in several different languages).
- (h) Sign or Salute.
- (i) Left handshake.
- (j) World Song—if the Unit does not know this, could a visiting Guider/Ranger be invited to teach your girls?

Follow this up after P.L.'s have had time to pass the information to their patrols with maybe a patrol game, e.g.

Write down colours of World Flag—Number 2.

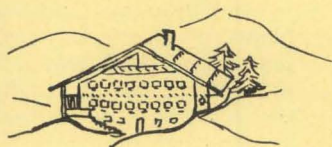
What badge has the same two colours—Number 3.

Write motto in another language—Number 1, etc.

**Idea 5:**

P.L. Training again—

Four World Association Centres (page 21) and each patrol might like for its own patrol box the pamphlet, *The Story of the Four World Centres*. Perhaps with time for a little research, and preparation, each patrol could make a poster on one of them.

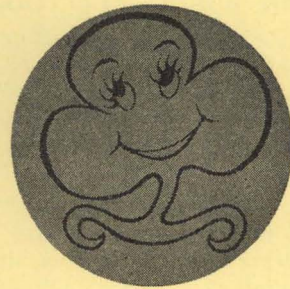


**Idea 6:**

Various other games are played in companies which have sets consisting of—

- (i) the flag of a country
- (ii) its badge (pasted on cardboard)
- (iii) its uniform (also on card)
- (iv) the country's name printed on card and perhaps
- (v) its motto.

The girls learn much by assembling the groups correctly.



Sue interrupts again—she thinks I've done enough writing. She asks: Has each Guider reading these Training Pages read the parts concerning International Guiding in her own Section Handbook? Good question.

Handbook references:

- Ranger Guider—p. 95.
- Ranger Guide—Chapter 18.
- Guide Guider—pp. 180-181.
- Guide—pp. 14, 15, 207-217.
- Guide Interest badges—those for World Friendship Emblem, listed p. 51.
- Brownie Guider—pp. 8, 9.
- Brownie Guide Handbook—pp. 59, 74, 75.
- Brownie Friendship Interest Badge—p. 115.

**Some Laws from Other Lands (Trefoil Round the World)**

- A Girl Guide sees God's work in Nature, and therefore protects plants and animals. (Austria.)
- A Guide obeys joyfully and does nothing by halves. (Burundi.)
- A Guide is reliable and punctual. (Cyprus.)

Interesting? Points for discussion? Just slight variations on the same theme. The Ten Guide Laws.

Many of the songs we sing come from other countries, e.g., Land of the Silver Birch (Canada).

Many games played by Brownies and Guides have come from other lands too. If you know their country of origin—tell the girls, and find the country on a map.

Brownies would like to search Trefoil Round the World, and find out in which countries they would be called Sunbeams, Butterflies, Bulbuls, Angels, Flowers, Bluebirds, Stars, Little Friends, Blue Jays, Bees.

Thus you use every opportunity to mention other countries belonging to our Worldwide sisterhood.

## VICTORIAN BUSHCRAFT TOURS

It all started at a Bushcraft training week-end. A guider told of an organised tour she had taken round the National Parks. It sounded fabulous—but rather expensive. But why couldn't we do something like that for ourselves, making it a do-it-yourself tour of camping or "halling," and so cut costs?

The first tour organised by the Victorian Training Department took place during the September school holidays, 1970. Numbers were small—we only half filled the bus—there were protests from many who would have loved to attend but could not manage a whole week away—why couldn't we just have a week-end? But this would have cut across the purpose of the tour, to compare the flora and fauna of different areas of Victoria—coastal, mountain, volcanic plains and mallee.

The tour took us through a cross-section of the different environmental areas of Western Victoria. First stop the You Yangs, renowned as the home of many birds not otherwise seen so close to Melbourne. The night was spent camping on the coast near Airey's Inlet. The second day out the tour was joined by a naturalist, Fred Rogers, well known author of "A Field Guide to Victorian Wattles," "Growing Australian Native Plants" and other books. The second night found the tourists at Terang, sleeping in a Guide Hall. Then on to "Victoria's Wildflower Garden," the Grampians for two nights.

On again, this time to a very different environment—two nights in Wyperfeld National Park—home of the Mallee Fowl as well as droves of emus and kangaroos—on the edge of the Little Desert and the Mallee.

From here another night was spent in Kerang after a stop at the Swan Hill Folk Museum. Turning for home, tracks were followed through the Whipstick country near Bendigo, where a wealth of wildflowers were seen.

Already plans were being made for a reunion and for "next time." We were a very mixed bunch—housewives, teachers, office workers, farmers' wives, students; some young, some not so young; some already fairly experienced naturalists ready to share their knowledge with others and eager to gain more themselves, others who didn't know a banksia from a bandicoot (but wanted to find out).

No one doubted that it would be an annual event, so the question asked of the Training Department was not "Will there be another bushcraft tour?" but "Where are we going this year?"

1971 tour, held again in the September school holidays, was to Eastern Victoria. On the first day out a visit was made to Miss Jean Galbraith, author of "Wildflowers of Victoria," here bower birds were watched feeding at her sitting room window and there was time to wander through her garden of native plants. Miss Galbraith joined the tour for the first night, and at the indoor camp gave a fascinating talk accompanied by slides of birds, insects and flowers.

On the second day the tour was again joined by Fred Rogers. On to Orbost via the Buchan Caves. Two nights here gave an opportunity to explore the far eastern forest and the mouth of the Marlo River, before going on to the Banksia Peninsular near Paynesville on the Gippsland Lakes. From there was the added adventure of a boat trip to the National Park on Sperm Whale Head.

A stop at Tara Valley and Bulga Park National Parks, a night at Yarram and on to Wilson's Promontory where the last two nights were spent in the Wallaby Hut at Tidal River. On the homeward journey a visit was made to the mangrove swamps at Tooradin.

1972-73 was a "split round." We wanted to see the abundant wildflowers of the Rushworth-Whroo area and also those of the high plains of North Eastern Victoria, but the first are at their best in October, the latter in summer. So although it was considered one tour, with as far as possible the same people participating, there was a gap of over three months between the two sections.

Sadly, the Whroo flowers were mostly over by our October week-end, it having been an unusually early season, but we still found many different varieties. We were interested to explore the gold working of the early days, and to attend the opening of the Growlers Hill Wildflower Sanctuary at Rushworth. The local Guides had helped this project as part of "Plan Evergreen."

In January the tour's first stop was Lake Mokoan, known for its abundance of water-birds. A night was spent in the Tawonga Guide Hall in the Kiewa Valley and then

(Continued on page 235)

# NOTICES

## COMMISSIONERS AND GUIDERS, PLEASE NOTE—

Pack Information form has been discontinued and replaced with Unit Information form. This is for use in record books of Brownie Guide, Guide and Ranger Guide Units. Price 5c each

### HOME FROM HOME SCHEME

I am a happy "City Mum" to a young lass from the country who is a trainee at a city bank. Her parents are also happy as she is still in a family atmosphere rather than a hostel or a flat. My District Commissioner is also happy as she has gained a new Assistant leader—everyone is happy!

There is naturally no compulsion for a girl to go into active guiding again, but she may like to continue if her studies or job allow her sufficient time.

If there are any other City Mums willing to board a former guide and if there are any former country guides wishing to live with another guiding family in the city, would you please let me know. I will try to "link them up" to the best of my ability.

This scheme could work in reverse if a young (former guide) teacher/nurse, etc., is

posted to the country. She may be happy to join a guiding family there. We can all help each other so much with our common bond of Guiding. Do let me know what you think.

(Mrs.) Della Hutchinson,  
Convener of Hospitality,  
8 Marshall Ave., Kew, 3101.  
Phone 80 3820.

### CORRECTION

"Matilda," April issue—

Page 200—Mrs. Irene Fairbairn was State Commissioner for Victoria 1958-1963, not 1938 as stated.

Page 201—Photo. caption should read: ". . . with her Assistants, Mrs. S. McKay (left) and Mrs. R. G. Orr (right).

### GUIDERS' SEMINAR

Melbourne University, October 12th, 9.15 a.m. to 5 p.m.

Keep this date free—more information later.

---

(Continued from page 234)

five days based in the Bogong Ski Lodge at Falls Creek, with day trips getting to know the wildflowers of the Victorian Alps . . . and many unknown muscles in the process!!

And now it is '74. Following requests this year's tour will be in Northern Victoria, seeing something of the Barmah Forest, Hattah Lakes and the Murray River. Plans are being finalised now and details will appear in "Matilda," inquiries may be made direct to the Training Department. The regular "bushcrafters" look forward to seeing many new faces on this tour.

Coming???

\* \* \* \*

Children grow up fast — before you know it, the little girl in the frilly feminine dress is a woman in blue jeans.

Except for articles where copyright restrictions are indicated, material in "Matilda" may be reprinted in Guide and Scout magazines without prior permission. A credit line would however be appreciated.

# THIS IS THE LOCAL ASSOCIATION SECTION



## THOUGHT FOR THE MONTH

Many of us spend half our time just wishing for the things we could have if we didn't spend half our time just wishing.

## BRIGHT LOCAL ASSOCIATION

Most Local Association break-up meetings follow a regular pattern, reviewing the past year and thinking of the year ahead. Office-bearers close their books for a while and rest from, but do not forget, Guiding.

For fifteen years and more, a small nucleus of people in Bright have certainly not forgotten Guiding. In fact, they have not noticeably rested from it.

At the final meeting for 1973, the Bright Local Association honoured this small nucleus by the awarding of no less than eight Long Service Awards, which must surely be a record for any Local Association to make at one time.

During the past fifteen years, Guiding in Bright has had many good years and few bad ones, largely due to the continued strength of their Local Association. It is interesting to reflect how many times during this time the recipients of these Awards have held office, and this selfless devotion to the Movement emphasises the importance of such a nucleus of workers in a Local Association.

It is also a wonderful reminder that there are those amongst us who are prepared to devote time and energy to our youth. The Bright Local Association is proud of its Brownies, Guides and Guiders, as well as those members who have played their part so selflessly for so long.

## BURNING IS SO EASY

Unfortunately, burning is so very easy, so this month we thought we would remind you again of the obvious things we all know, but sometimes overlook. With winter on the way, new nightclothes are being considered—so please, up to twelve-years-old at least,

look at the track suit style, preferably in a woollen or silk fabric, so that there are no flowing ends to catch in heaters. Heavy weight, closely woven material is preferable to light loose weaves. Remember that materials like cotton, linen, rayon and acetate ignite and burn rapidly, while synthetics like nylon, orlon and acrilan tend to melt rather than burn, and cause extensive burns by adhering to the skin. Make a point of asking your retailer about non-inflammable nightwear for children—if enough mothers make enough noise, eventually manufacturers must hear and heed.

Too often, burns are caused by playing or standing too close to a fire or heater, and it doesn't have to be an open fire. The glass screens on gas and oil fires become hot enough to cause severe burns—with young children around these should have protective guards.

There are many other every-day hazards around the home—the incinerator left burning while mother answers the phone, the steam iron with the cord where it can be easily pulled, matches, toasters, barbecues, fireworks, even magnifying glasses. And not only children are at risk—do you have a mirror over your fireplace where someone may lean forward for a closer look, perhaps an elderly person, or someone in a long frock. This hadn't occurred to us until we read a National Safety Council report—reading warranted to make one look around the home with new eyes. So look carefully and PREVENT. The aftermath of burns is not pretty.

Some useful books to have on hand and available at the Guide Shop are "First Aid"—Authorized Manual of the St. John's Ambulance Association in Australia, and "Safety in your Home"—Royal Society for the Prevention of Accidents. Apart from their value at home, these books, both moderately priced, would be suitable gifts for L.A.'s to present to units.

(Continued on page 238)



## GUIDING AND RACIAL PREJUDICE

One of the greatest issues confronting the world to-day is Race Relations or how people of different racial or ethnic backgrounds get on with each other. I am sure that you can name many countries where different groups exist. South Africa, Rhodesia, America are a few which have made headlines recently. But we in Australia also have our headlines. The recent survey taken by a University brought to light differences between Australians and New Australians. How they like to live in communities and speak their own language. Incidents in February highlighted differences between Australians and Old Australians.

Is Australia on the way to Racism? Are we following America in the racial problem? Guiding can help make sure we are not.

Are you able to respect other people no matter what colour, class or creed the other may belong to? Most Australians would answer, "I haven't thought about it," or "It won't affect me, so why worry?" and pass over the question.

Guides of to-day will be the rulers of tomorrow. We must help them think about this question or when they are faced with it they will answer in the same way.

How can this topic be presented to our girls so that they will learn understanding and tolerance? Through discussions, talks, visits to and from other organizations and through their everyday life.

Schools are the best place to start. New—Old—all Australians meet, mix and communicate freely at this stage of life. Invite the girls to bring their friends along to your meetings. Contact the parents, and ask them to talk to your group about their life, their upbringing, their hometown, their culture.

The Ministry of Aboriginal Affairs in its endeavour to improve Race Relations between Aborigines and non - Aborigines organizes camping programmes. A campsite situated at Rubicon near Eildon Weir provides the venue at which camps are held.

At these camps the participants, usually equal numbers of Aboriginal and non-Aboriginal people of various ages and of both sexes, are given the opportunity to gain knowledge and skills in Cultural, Educational, Recreational and Social Activities. The campers on arriving at the camp are divided into small groups (like our patrols)

and are able to participate in activities which include Canoeing, Sailing, Hiking, Lapidary, Hair Care and Make-up to list a few. During these activities they are encouraged to communicate and gain knowledge of the others' point of view.

Through discussion they find that there is very little difference between us all. We are all human beings who eat, sleep, and have fun, but have developed in different backgrounds.

Guiding can help this work. We use similar tactics to teach good Citizenship, and is not Citizenship what this is all about?

We are all Australians—Old—New—or in-between. Does it matter? Understanding is the thing we must have to make a better Australia for all.

Barry E. Armstrong,  
A.A.C. Hoadley Area,  
Scout Association of Victoria.  
Camp Director and Education Officer,  
Ministry of Aboriginal Affairs.

---

### The Chief Commissioner's (Australia) Standard

This is not a personal standard but is handed on from one Chief Commissioner to the next.

The Standard carries the Guide symbol, the Trefoil on a blue ground. The Surrey Lion represents Surrey, England, where Mrs. C. O. Fairbairn, the first Chief Commissioner for Australia, commenced her Guiding days and the Tudor Rose gives us the link with England where Guiding began.

Then comes the Commonwealth Star, representing Australia as it does on our National Flag; this is followed by our Motto, "Be Prepared." On the Fly, on a pale blue ground divided by a band of pure gold, are the Emblems of the States and Territories of the Commonwealth — Koala Bear (Queensland), the Waratah (N.S.W.), the Southern Cross (Victoria), the Magpie (South Australia), the Black Swan (Western Australia), the Platypus (Tasmania), the Black Cockatoo (the Northern Territory), the Bird of Paradise (Papua New Guinea). Interspersed with the emblems are Yuccas, or Grass Trees, which are found all over the Commonwealth — in some places they are called Blackboys.

(from W.A. 'Courier')

## FRIEND TO THE BLIND

Very few guides achieve the distinction of earning a special green and black badge with six braille dots in the centre.

But Sharon Tucker, 11, of Lower Templestowe, Victoria, wears the **Friend to the Blind** badge proudly on her right sleeve.

The test for the badge, which is rarely earned, involves showing that you know the correct way to offer assistance in guiding a blind person and also being able to read braille to grade one standard.

These tasks were not too difficult for Sharon, who has been familiar with blind people and guide dogs since she was born.

She passed with flying colours after three months' tuition from her father, Michael Tucker, an instructor at the National Guide Dog and Mobility Training Centre, Kew.

Sharon was tested by guide dog owner Graham Downie, former public relations officer for the Victorian Guide Dog Association, who is a keen Scouter.

Her braille exam. was set by another guide dog owner, Doreen Brockman. This test involved transcribing from print, with not more than ten errors, three large sheets of braille, as well as reading, by sight or touch, prose and poetry from Grade 1 braille.

To gain the badge, for which blind Guides are not eligible, Sharon had to know the braille alphabet, punctuation and the way certain common words are abbreviated. The Guide Handbook states that the holder of the badge is expected to use her knowledge in the service of the blind.

Sharon's father, Michael, who came to Australia in 1967 after working as a guide dog instructor with the Guide Dogs for the Blind Association in England, has no doubt that his younger daughter, Alison, 10, will not be long behind Sharon in working for her **Friend to the Blind** badge. With help from Dad, she'll have no worries!

From the "Guide Dog" Magazine published by the Royal Guide Dogs for the Blind Associations of Australia.

## TRAINING DAY FOR L.A. OFFICE-BEARERS

As a result of requests received we will be holding a Training Day at Guide Headquarters on Wednesday, 7th August, from 10 a.m. to 2 p.m. Fee \$1.00 per L.A. Please bring lunch. Please write to the Training Department by 26th July and advise names and address of those wishing to attend.



Sharon Tucker and Kay White during the test.

---

## L.A. SECTION (continued from page 236). IMAGE

An organisation may spread itself world wide and may have a million members, but the average person will usually form his judgment of the organisation through his contact with one individual.

If the person is rude or inefficient, it will take a lot of kindness and efficiency to overcome that bad impression.

Every member of an organisation who, in any capacity, comes in contact with the public, is an ambassador, and the impression he makes is an IMAGE—good or bad.

From "Coo-ee" (Queensland).

## RECIPE CORNER TURKISH MEATBALLS

1 lb. minced steak, 2 potatoes, 1 beaten egg, 1 cup chopped walnuts,  $\frac{1}{4}$  cup currants, salt and pepper, 1 tablespoon chopped parsley,  $\frac{1}{2}$  teasp. cinnamon. Boil potatoes, press through coarse sieve. Add remaining ingredients and mix thoroughly. Form into balls about  $1\frac{1}{2}$  ins. in diameter. Fry in hot oil or fat until well browned and done to your liking. Serve with boiled rice.

Please send contributions to Mrs. D. O. Oldfield, 4 Embling Road, Malvern, 3144.

# From the **GUIDE** **SHOP**

## GUIDE AND BROWNIE GUIDE UNIFORM PRICES as at 1st May, 1974

### BROWNIE GUIDE:

Uniform	
Size: 26", 28", 30", 32", 34" ....	\$6.70
Tie (gold) .. ....	70c
Beret and Beret Badge ....	\$1.43
Belt ....	\$1.10
Belt Pouch ....	\$1.30
Cardigan	
Size: 26", 28", 30", 32", 34" ....	\$6.50
Pantees	
Size: 8, 10, 12 .....	99c
(Size 8 not available until August)	
Sox—Knee High (Fawn)	
Size: 9 to 12 ....	89c
13 to 3 ....	99c
2 to 8 ....	99c
Uniform Material (36"), per yard ....	\$1.30
Uniform Pattern ....	80c

### GUIDE:

Skirt:	
Waist 24" to 32" ....	\$5.70
Blouse	
Bust 28" to 40" ....	\$5.60
Tie including State Badge ..	\$1.50
Beret and Beret Badge ....	\$1.60
Belt ....	\$1.65
Pullover (Guide Blue)	
Size: 30" to 42" ....	\$8.40
Pantees (Guide Blue)	
Size: 10, 12, 14 ....	99c
Sox—Knee High (Fawn)	
Size: 13 to 3 and 2 to 8 ..	99c
Material	
Blouse (36"), per yard ....	\$1.30
Skirt (36"), per yard ....	\$1.30
Uniform Pattern ....	95c

### BOOKS ON BIRDS

Birds for Beginners ..... \$4.75

An ideal book for the Unit library.

The novice bird watcher is advised where to look, how to look and what to look for. She is shown how to record notes, how to identify birds, and how to encourage them to feed in her own garden.

Bird classification, nests and eggs, camouflage, calls, and migration patterns are simply explained. Over 100 birds described in detail with expert illustrations to aid identification. Although indexed by common names, a list of Common and Scientific names provide a sound preliminary to an advanced study on birds.



Gould League Birds of Victoria \$1.50 each  
 Book 1—Urban Areas. Book 2—The  
 Ranges. Book 3—Oceans, Bays, Beaches.

\* \* \* \*

Book 4—Inland Waters. Book 5—Dry  
 Country.

Birds in your Garden .... 75c  
 Bird Migration .... \$1.25  
 A Field Guide to Australian Birds .... \$5.50  
 By Peter Slater  
 What Bird is That? (Abridged Edition) \$3.95  
 By Neville Cayley  
 An Australian Bird Book .... \$3.85  
 By J. A. Leach  
 Australian Birds in Colour .... \$4.50  
 By Keith Hindwood  
 Common Australian Birds of Towns  
 and Gardens, by Graeme Chapman \$2.95  
 Australian Parrots in Colour .... \$2.25  
 Bush Birds of Australia .. .... \$1.95



Instant Series

Smaller Land Birds of Australia .... 35c  
 Larger Land Birds of Australia .... 35c  
 Water Birds of Australia .. .... 35c

\* \* \* \*

ALL PRICES ARE SUBJECT TO ALTERATION WITHOUT NOTICE  
 PLEASE SEND POSTAGE WITH ALL CASH ORDERS:  
 ANY SURPLUS MONEY WILL BE RETURNED PROMPTLY.  
 NO CLAIMS OR RETURNS AFTER 21 DAYS.

## A MOOMBA FIRST TO THE GUIDES

Moomba is something special to all Melbourne people. Moomba means let's get together and have fun. Last year the Guides really joined in with many forms of activities and they had lots of fun.

This year they were in Moomba again, but in a different rôle altogether. Last year they showed the public all the various aspects of Guiding, indoor and outdoor, leisure time pursuits and national dances of other countries. This year the Australian Council for the Arts made available a grant so that the Girl Guides' Association could engage professional artists to present to the Moomba audiences, for the first time, legitimate Children's Theatre.

The venture was not without its hitches and problems for the producers, but eventually the presentation of "A Journey to Other Lands" was the highlight of their visit to Moomba for many children.

The script was written by the Portable Players themselves, and in a very clever way they gave real insight into modern living, so that there was room for thought in many of the sequences.

It was not a journey to Austria, Argentine or even Alaska, but a journey into the Land of Make Believe where nothing was as it seemed, where no music was allowed, where everyone did the same, etc. Both adults and children were enthralled with the antics of Zapper and his magic T.V., which supposedly cast a spell over all who looked at it. The children co-operated with the players most spontaneously, often gave advice or jeered at the villain, and finally joined in the victory celebrations when Zapper was completely won over to the sound of music, fun and dancing.

The artists were young and performed so well in their respective rôles, and delighted the audiences by allowing the flap of the make-up tent to remain open so that the children could watch them dabbing first white paint on their faces and then following it up with various colours to match their simple, but effective costumes.

After each performance both the Portable Players and the members of the Association in attendance received much praise for presenting a much-needed family orientated segment in the Moomba festival.

And all those who saw it thought it was fun!!!!!!

## LET'S TALK IT OVER LETTERS TO THE EDITOR OR ???

From time to time guiders ask for a page in "Matilda" with a title similar to those above.

When letters to the Editor are printed in "Matilda" we have found in the past that there is one of two reactions—

- (i) **Sometimes** the writer of the letter gets an answer direct,
- (ii) None.

Well, here we are trying AGAIN . . .

Dear "Matilda,"

Referring to your "Lesson in Semantics" in the March issue . . . I hope that we are not advocating that the "right" way to write a log is better than the "wrong"? The "wrong" way at least tells an honest story compared with the alternative as it is stated.

"We missed the bus"—this caused the schedule to be adjusted.

"We got lost" is a fact—the alternative suggests a planned move.

"I cut my finger opening the can of soup" is a clear statement compared with the alternative which could mean anything.

Jim's statement could have been expanded to include the identification of the "something that wriggled."

"We forgot the tent pole so we used a stick" tells the story—the alternative could mean anything, such as shade, water, timber, etc.

"Breakfast was horrible" does not mean that they did not feel hungry.

"I felt I had walked 100 miles" does not mean to me "It did not seem fourteen miles." This suggests to me that it felt a shorter distance.

It seems to me that a writer must be involved with the scene with honest, positive statements, not just wordy wafflery which is meaningless.

Best wishes, and sincerely,  
Flora Richardson.



## NEWS FROM UNITS . . .

Dear Matilda,

Recently we held a Patrol Leaders' Training "SLEEP-IN," with Robyn Saunders from 1st Monash Company as guest trainer. She gave us many new and interesting ideas for patrol time. Beaumaris Bay Guiders demonstrated outdoor cooking, and taught us much about camp activities, whilst Beaumaris Guiders provided a session on music for use in the company and in patrols, also for camp fires.

We slept at the Guide Hall that night and waking at 6 a.m. on Saturday, we dressed, and were joined by the other Guides and Brownies at 6.30 a.m. Together we went for a Breakfast Hike to the beach at Rickett's Point. For a simple "going-up" ceremony, we collected stones and placed them in the sand to form stepping stones, over which the Brownies crossed to enter Guides.

We enjoyed breakfast in beautiful sunshine, before returning to the Guide Hall. Everyone had a wonderful time.

—From 1st Beaumaris Company.

Dear Matilda,

1st Frankston Brownie Pack went to Sunbury by train on Saturday morning and were billeted. After lunch our pack and the Sunbury Brownies went to Emu Bottom Homestead. We saw lots of interesting things and had a great time. On Sunday we went by bus to the Lion Park at Bacchus Marsh. There we saw different animals and went to see the circus. We had a nice time, but it was a very hot day.

On Monday we had a farewell barbecue, then set out for home. Our parents were waiting at the station for us. We were very weary, including Brown Owl and Tawney. But we all had a most enjoyable week-end.

Leah Evans,  
1st Frankston Brownie Pack.

Dear Matilda,

I am writing to see if any other Company can equal our record.

We have 31 Guides in our Company at Moorleigh, and in this number we have eight sets of sisters. In two cases there are three members of each family.

Surely this is a record?

"Kallee."

4th Victorian Lone Guide Company had a Get-Together at Indented Head with their new Captain.

The girls came from Picola, Dookie, Anglesea, Greensborough and Drysdale.

On the Saturday night 1st Ocean Grove Guides visited the Lones for a barbecue tea.

Bellarine District Commissioner was a guest for the Guides Own held on Sunday.

The Lone Company visited the Matthew Flinders Memorial, where he landed in 1802 and named the place Indented Head.

The guides discussed badges and did various handcrafts; one girl did portion of her Entertainer Badge.

Special guest was the Company's most recent Queen's Guide.

Lone Guides do all their Guiding by correspondence, so it was a particularly valuable week-end as they were able to meet each other and their Captain and discuss challenges.

\* \* \* \*

Our leaders, with their families, took 15 of us for a trip to the Kelly Tree.

This tree is very big and is where Ned Kelly had his camp. It was used as a lookout and this was the spot where the three policemen from Mansfield were killed. There is a monument in our town to them, and they are buried in the town's cemetery.

At the Kelly Tree we all hunted around for gold and sapphires in Stringy Bark creek. One girl found a small sapphire.

We had a very enjoyable day and are looking forward to a similar trip to Jamieson very soon.

Kerry Green,  
1st Mansfield Company.

One Brownie day our pack decided that we would like to help someone else. So in Pow Wow the Brownies agreed to hold a street stall and raise some money. Next Brownie day each six made a scrap book; there was an animal one, a flower one and one comical. It was decided to give both the money and the scrap books to the Children's Ward, Swan Hill District Hospital.

On the following Brownie night we travelled into Swan Hill and presented our cheque and scrap books to the children's ward.

Colleen Dagge,  
1st Woorinen South Brownie Pack.



The Thinking Day—Founder's Day Week-end for the Trefoil and B.P. Guilds, was held again at the National Fitness Camp at Mt. Evelyn.

A lovely setting of towering gums and native bushes, with the creek ambling between them, surrounds the Camp, far from the noise of the city. We arrived at various times from Friday p.m. to Sunday a.m.—about 90 in all. Scouters and Guiders, Scouts and Guides, past and present, with families from babies in basinettes to teenagers—participated in fellowship over a week-end of sun and heat. The swimming pool drew many and cricket and athletics were the order of the day when free time was available.

A number of handicapped members were with us as usual and two guide dogs, and altogether it was a further link in our motto of fellowship.

On Saturday afternoon a commemoration of the Founder, Lord Baden-Powell, was given by Mr. Alan Humphries, Co-ordinator and Consultant of Migrant Education, also H.Q. Commissioner of Public Relations, Scout Association, Victoria. He gave a clear picture of the worldwide effect of B.P.'s leadership among youth.

Tea was served, and Mrs. Isobel Lister, Trefoil Adviser for Victoria and Mr. Lloyd Markham, Leader of the B.P. Guild, mingled with the gathering. Films and slides of the General Assembly in Vienna were shown—most colourful and interesting views of the old city of Vienna, the surrounding districts and magnificent mountains and villages of Austria.

Saturday p.m. after dinner, chores were divided among us. We were entertained by the B.P. Guilders with "Fun and Games," which united us all in laughter and goodwill, ending with a competition for the best use of rolls of crepe paper—won by a "Maypole" (human) extremely well done, with another group "disqualified" for too professional work!

Sunday morning was free and hot. Then Guild's Own service organised by the "Wrinklies" branch of Trefoil, united us again—the guest speaker, Miss Judith Hughes, of the Kindilan School for Children in need of Special Care, deputising for the Principal who was ill. Miss Hughes gave a most interesting talk on the service offered to these needy children in a home-like atmosphere, with lifetime security offered them and emphasis on individual understanding, mental and physical. Our service project this year will be for Kindilan.

With us were Joan and Michael Baden-Powell and their two sons—the family hope to be in England soon and to see Lady B.P.

So the time to go home came, and we made our way from the peaceful spot hoping to return next year.

B. W.

#### ARGANA TREFOIL FIRST ANNUAL MEETING

It really was so wonderful. It's just not done to skite—

But, honestly, our annual meeting was a scrumptious night.

The ladies came from near and far with guidey smiles aglow,

And from the start the atmosphere was full of go—go—go!

Apart from cutting short reports—they're interesting, true,

But sometimes they become quite long and make one feel so blue.

A stall, of course, for flood relief, was patronised quite well.

There really were a lot of things that were put out to sell.

But—what was most exciting—the part that was most thrilling

Was looking, learning, listening to the guide choir and their singing.

They danced, then sang. They taught us songs. They're jolly and so clever,

I'm sure Argana Trefoil will remember them forever.

As all things finally do end and always with a "cuppa,"

We nattered to our many friends as we enjoyed our supper.

So thanks now to the guide choir and thanks to all our friends.

May the memory of ARGANA echo and never end.

—M. T.

MATILDA

---

---

# Victorian Newsletter

---

---

Dear Everyone,

Hello once again! You shall not always be getting two letters from me each month with "Matilda", but I could not resist this opportunity of catching up, so that in future my letters to you will be more up to date.

I thoroughly enjoyed a visit to Seymour district, where I saw many old friends, but it was also pleasing to see many new faces. I have received many invitations to visit you all, and I am sure you will understand if I cannot come immediately owing to other commitments.

This year I played in the Annual Tennis Day — quite a shock to the system and perhaps my partner, but lots of fun for everyone. Mrs. Squire and I left the tennis to drive to Horsham for the Wimmera Region Conference in Dimboola the following day. Miss Carter was also there with the Shop, and we spent a very happy day. It is so good to move around and meet members of my Guide family.

The Grimwade family spent a quiet Easter at home, unfortunately without Martin, who had gone to stay with a friend in Deniliquin. It was good to just relax and catch up with Rick and Ann.

The St. George's Day Service saw St. Paul's Cathedral packed — in spite of the wet night. I hope everyone enjoyed it as much as I did, and I thought our Guard of Honour and Colour Party looked very impressive.

Mornington Peninsula Region's International Day at H.M.A.S. Cerberus was a great day. Crowds of girls, parents, brothers and sisters came by train, and both Chapels were packed for the services which began the day. After I had performed the Official Opening I was invited to present the Walter Donald Ross Certificate of Merit for 1972 to the Guides of Karingal District for their outstanding service to the O'Dea family over the last three years. Mrs. Price had brought the certificate back from the last World Committee meeting.

A very simple but very beautiful Memorial Service for Mrs. Fairbairn was held at Christ Church, South Yarra, on 23rd April, 1974. Mrs. M. A. Buntine, O.B.E., gave the address and brought back very many memories of a truly wonderful person — a person whose memory will always live on and to whom Guiding owes so very much. Gran believed wholeheartedly that Guiding should be fun, not only for the children, but for adults, families, everyone connected with it. We should never get so bogged down in paper warfare, red tape, that it ceases to be fun. This we could do well to remember. We should also remember another piece of advice which Gran gave Miss Mary Lambie when she became Chief Commissioner: "Never let the love go out of Guiding".

The love and friendship found in Guiding are two of its greatest strengths — how appropriate then was the theme "Friendship" of Goulburn Region's Conference, from which I have just returned. No matter where we go throughout the world there we can find this wonderful friendship which means so very much to us all.

With love and best wishes to you all,

JOAN E. GRIMWADE,  
State Commissioner.

MATILDA • May, 1974

## ITEMS OF GENERAL INTEREST TO ALL

### FLOOD RELIEF APPEAL

From Queensland comes this message: "We have been overwhelmed by the kindness of members throughout Australia following the January floods in Queensland, and we have been able to assist many members, particularly those in Brisbane and near metropolitan areas who were worst affected. Many heart-warming letters of appreciation have been received. However, we feel now that we have helped everyone as far as possible, and it was decided at the last Executive meeting to close the Appeal as from the end of April. Thank you for your thoughtfulness in coming so quickly to our assistance."

In view of this letter we are now closing our Flood Relief Appeal. We thank all those who have contributed towards the \$3456 which we were able to send to Queensland from Victoria.

### LONE SECTION

The Lone Section extends a cordial invitation to Commissioners, Guiders and L.A. members to attend the Lone L.A. Annual Meeting to be held at Guide Headquarters on 6th July, at 1.45 p.m. The Guest Speaker will be Mrs. M. Hitchner, a Girl Scout Leader from the U.S.A.

### "MATILDA" DISTRIBUTION

Some members may still be wondering who is to receive Matilda automatically now that the new system has come into force. Please note that it will be sent to Region, Division and District Commissioners (not Assistants), the Leader of each unit (not Assistants), Region Training Advisers and Region Camp Advisers. All other personnel are welcome to subscribe (\$2.00 per year). Don't forget to advise personnel changes promptly from now on so that the right person gets it at the right time.

## ITEM FOR COMMISSIONERS

### COMMISSIONERS' CONFERENCE — 31st MAY to 2nd JUNE

A reminder: Don't forget to bring your programme to the Conference, and your Region/Division/District badges, name tags, etc. (or postcards depicting your area) for swapping at the "Mix and Match" Session before the opening of the Conference. The Committee is looking forward to meeting you all on the 31st!

## ESPECIALLY FOR LOCAL ASSOCIATIONS

### LOCAL ASSOCIATION ANNUAL FEE

As a result of a suggestion made by L.A. members at last year's biennial conference, it has been agreed that the Conference affiliation fee, which is submitted with the District Annual Report, be increased from 50 cents to \$1. We apologise for any confusion there may have been concerning this amount, and hope this announcement clarifies the situation.

## ITEMS OF SPECIAL INTEREST TO GUIDERS

### THE SPANNING SEMINAR, 1974

WHO	.....	All Guiders.
WHEN	.....	12th October, 1974.
TIME	.....	9 a.m. (prompt) - 5 p.m.
WHERE	.....	Melbourne University.

You cannot afford to miss this opportunity to hear pertinent speakers, see old friends and make new ones, and give yourself a shot in the arm.

### GUIDE SECTION — Revised Guide Handbook Part 2

A revised edition of Guide Handbook Part 2 will be introduced before long, and when it is available it will be sold with each copy of Guide Handbook Part 1, making the complete Handbook. Additional copies will be available for sale to Guiders who wish to bring their Handbooks up to date, and to Commissioners, Guiders and Testers.

The syllabi in this revised edition have been designed to provide Guiders and Guiders with more structured ideas for training and activities to be incorporated into Company and Patrol meetings. There are more badges for the training of the younger Guiders, and consideration has been given to what appeals to "Australian" girls.

To help Guide Guiders, Commissioners and Testers to make full use of these changes, a new booklet, "How to Use the Australian Guide Badges", will be released at the same time at the cost of approximately 10 cents. It is recommended that adults concerned with the Guide Section purchase a copy of each book.

The badges syllabi as set out in either the present or the revised Guide Handbook Part 2 may be used until 31st December, 1974. Only the badge syllabi set out in the revised Guide Handbook Part 2 will be accepted from 1st January, 1975.

### AUSTRALIAN LINK-UP, 1974

Tasmania has issued an invitation for a contingent of 20 Guiders to "Explore the Arts" and "Become a Homemaker" from the 29th December, 1974, to 8th January, 1975. The cost will be approximately \$75. Applications—two from each Region—will close on 30th June, and Region Commissioners are asked to indicate which of the two is the first preference. Guiders applying should be aged 12-15 years, and have camped for at least two nights (indoors or out). They should hold one badge from the Little House Emblem or Arts and Crafts Emblem, and have an interest in the cottage industries and crafts and in historic buildings.

Leaders are wanted for other Link-Up events. We still need 7 Leaders to travel to N.S.W. in August, 1 for N.S.W. in January, and 2 for Tasmania, December-January. A number of Guiders will also be required to share in our own Victorian Train Trek. Please make it possible for us to send your Guiders to these interesting events taking place all through this year by making an effort to GO WITH THEM. (We are grateful to those who have already offered their services as staff, and will contact them shortly.)

### QUEEN'S GUIDE PRESENTATION

The Presentation which was to have been held this month will now take place on Saturday, 8th June.

### INTERNATIONAL — ALL INDIA JAMBOREE

Guides, Rangers or Guiders (minimum age 15 years) are invited to share in the All India Jamboree to be held 7th - 11th November, 1974. Camping experience essential. Applications close 24th May. Further details obtainable from Mrs. Lesley Dwyer, International Adviser.



## HAWAIIAN HOLIDAY

Imagine yourself living Hawaiian-style amidst these Pacific Islands, with swaying palm trees, emerald seas and sun-drenched beaches. Imagine an international guest spending the September holidays with you in your house — and the excitement of showing her around your area and letting her share your way of life.

This is more than a dream. It may be a reality. We are hoping to arrange a pilot "International Holiday" between Victoria and Hawaii. An invitation has been sent to Hawaii asking the Girl Scouts to participate in this pilot holiday, and the reply is eagerly awaited. This proposed trip will be the chance of a lifetime for Victorian Guides and Adult Leaders.

**Anticipated Dates:** 24th August to 8th September, 1974.

**Fare:** \$455 approximately.

**Accommodation** will be in private homes of selected Girl Scouts in Hawaii, where our Guides will be able to see and experience the "real Hawaii" by living with a girl of similar age in a family atmosphere.

**Qualifications:** At least twelve months regular attendance at unit meetings and the recommendation of both the Unit Leader and District Commissioner. It is important that each girl is reliable and thoughtful in behaviour as a guest in another country, so that the host family will derive as much enjoyment from the girl's visit as the girl will receive herself.

**Age:** Guides: minimum 14 years, maximum under 16 years (on day of departure). Adults: no stipulated age.

**Application forms and further details can be obtained from:**

Mrs. W. R. Gould, 54 Berkeley Street, Hawthorn, 3122; phone 81 3507.

Mrs. J. A. Hutchinson, 8 Marshall Avenue, Kew, 3101; phone 80 3820.

Mrs. W. Dwyer, 105 Finch Street, East Malvern, 3145; phone 50 4171 or 211 8329. (Note new address from end of May.)

(Note: Commissioners are invited to forward the name of any Guide who would receive and give benefit by this overseas experience, but whose circumstances would prevent her applying.)

## TRAINING CALENDAR SUPPLEMENT

(To be read in conjunction with Training Calendar in "Matilda".)

### Stage 1 Training — Cheltenham

Please note change of dates. This course will commence on 10th June, not on 17th June as shown in Training Calendar.

### Stage 1 Training — Barree Region

The course planned for the weekends of 22nd/23rd June and 6th/7th July will be held at Wodonga. Times: 10 a.m. - 4 p.m. Application and \$1.00 fee to Mrs. D. Hamilton, "Hamilton Park", South Wangaratta, 3677, by 7th June.

### Stage 2 Training — also at Barree Region

Dates: 13th/14th July and 10th/11th August. See next "Matilda" for further information, or contact Mrs. Hamilton direct. Closing date will be 28th June.

### Pack Holiday Training — Ballarat Region

A course will be held at Lingbogol during the weekend 27th/28th July. Further information next "Matilda". Closing date 12th July.

### Campcraft Training — Ballarat Region

At Lingbogol — 27th/28th July; 17th/18th August; 14th/15th September. See next "Matilda" for further details.

### Campfire Club

Meets monthly at Headquarters from 8 p.m. to 9.30 p.m. — 6th June, 11th July, 8th August. Further information from Miss Barr at Headquarters.

## TOWN AND COUNTRY TREFOIL GUILD

The Town and Country Trefoil Guild met at Headquarters. Mrs. Wallace and a small team of helpers provided tea, which added to the enjoyment of meeting old friends.

Many of the members have met regularly at Headquarters for meetings during the terms of their various appointments. When these appointments come to an end such meetings are rare, so on this occasion everyone greeted one another with glad cries and exchanges of news.

It was a little difficult then to settle to a formal meeting, but plans to keep in touch with former guiding people were discussed. A number of projects and areas where assistance might be given, were suggested, and some of these will be looked into.

Meanwhile, at Mrs. Chamberlain's instigation, we are embarking on a patchwork quilt in which as many as will may join.

As is usual at Headquarters, the meeting had to finish in time for another to begin, but Mrs. Shave succeeded in pushing the business on so we were able to hear about the Shoreham Camp Site from Mrs. Hutchinson before the meeting closed.

The next meeting will be the Annual Meeting—Headquarters at 10 a.m. on 26th June.  
A. H.

\* \* \* \*

Brown Owl was watching her assistant with the Cook Six, and keeping an eye on the waitresses and housemaids, all busy Brownies on their first Pack Holiday. Things were going well, and the Brownie Guider was feeling pleased her organising was bearing fruit. She sat down, and was soon joined by the littlest Brownie. "Brown Owl, how come you don't do any of the work?" Brown Owl made a suitable and apparently satisfying reply, and mentally gave the youngster an "A" for—observation!

1st Wodonga Guides were assisting at a Citizenship Ceremony. The local M.H.R. was present, and, as is his custom, conversed with the guides afterwards. "What's that?" he asked, pointing to the crossed keys of the Homemaker badge, "the burglary badge?" We have to confess we have quite a few burglars in the Company!

## CONGRATULATIONS to the recipients of the following:

Guiders' Long Service (15 years)—  
Miss D. Pearse  
Mrs. J. Male  
Local Association Long Service—  
Mrs. D. Haddow, Flinders.

☆ ☆ ☆

Thanks Badge—  
Mrs. J. Brookshaw, Wentworth, N.S.W.  
Mr. K. Moore, Wentworth, N.S.W.  
Ringwood Field Naturalists' Club, Laburnum.

## APPOINTMENTS AND WARRANTS

A warm welcome is extended to the following:—

### REGION COMMISSIONER:

Mrs. R. T. Porter, Baw Baw.

### DIVISION COMMISSIONERS:

Mrs. W. J. Hoddinott, Bacchus Marsh; Mrs. R. G. Baker, Bendigo Southern.

### DISTRICT COMMISSIONERS:

Mrs. A. W. Ballard, Sebastopol; Mrs. G. R. Dryden, Wycheproof; Mrs. M. F. Williams, Apollo Bay; Mrs. C. A. Brien, Birregurra; Mrs. R. G. R. Rennie, Alexandra; Mrs. R. W. Haines, Barham; Mrs. R. G. Lange, Queenscliff - Point Lonsdale; Mrs. K. W. Colliver, Edenhope; Mrs. M. Coombs, Puckapunyal; Miss L. M. Rigby, Balmoral; Mrs. W. R. Smart, Devon Meadows; Mrs. S. R. Rosewarne, Laverton; Mrs. K. J. Stocks, Nunawading; Mrs. J. Scott, Cobram; Mrs. W. A. Bartlett, Norlane; Mrs. G. Pope, Seymour; Mrs. G. Fryatt, Mt. Waverley; Mrs. D. J. McGuigan, Wantirna South; Mrs. M. J. Large, Assistant, Springfield; Mrs. J. B. Drake, Assistant, Wattle Park.

### ASSISTANT RANGER GUIDERS:

Mrs. G. Van Graas, Forest Hill Rangers.

### GUIDE GUIDERS:

Miss A. Reeves, 3rd Yarraville; Mrs. M. N. Magilton, 1st Timboon; Mrs. J. E. Houlden, 1st Elmore; Mrs. R. Simper, 1st Cobden; Mrs. A. Keefe, 2nd East Ringwood; Mrs. M. Treweek, 2nd East Ringwood; Mrs. M. E. Scott, 2nd West Doncaster; Mrs. H. Davison, 3rd St. Kilda; Mrs. M. L. Woodhead, 2nd Nth. Ringwood; Miss P. A. Sutherland, 1st Geelong West; Mrs. C. J. Higgs, 2nd Myrtleford; Mrs. N. Duggan, 2nd Geelong West; Mrs. P. A. Braithwaite, 1st Drouin; Mrs. R. M. Elliott, 1st Gunbower; Miss C. Tice, 1st Pascoe Vale; Miss S. L. Barry, 2nd East Malvern; Mrs. W. J. Reid, 2nd Maryborough.

### ASSISTANT GUIDE GUIDERS:

Miss L. Sherring, 1st Simpson; Miss J. E. Kean, 3rd Pascoe Vale; Miss M. J. McKenzie, 2nd Sunbury; Mrs. M. Campbell, 1st Waaia; Mrs. J. Pettitt, 2nd Nth. Ringwood; Miss K. A. Swenser, 2/4th Cheltenham; Mrs. M. Thomas, 3rd Sandringham; Miss J. E. Flashman, 8th Hawthorn; Mrs. T. J. Kenney, 1st Keysborough; Mrs. L. Cornell, 3rd Canterbury; Miss P. Mounsey, 2nd Alphington; Mrs. I. L. McLean, 1st Colbinabbin.

### BROWNIE GUIDERS:

Mrs. L. G. Davis, 3rd Nunawading; Miss K. A. Voice, 1st Preston; Miss J. Cross, 1st Springfield; Mrs. B. C. Rees, 1st Creswick; Mrs. M. J. Grenfell, 4th Nth. Balwyn; Mrs. V. Walsh, 3rd Central Doncaster; Mrs. H. L. Yates, 1st Werri-mull; Mrs. P. Aarts, 2nd Cranbourne; Mrs. R. S. Bone, 3rd Highton; Mrs. D. Rothwell, 2nd Under-bool; Mrs. J. Griffiths, 1st Warracknabeal; Mrs. B. Sullivan, 3rd Oakleigh (O.R.C.C.); Mrs. K. L. Horner, 1st Wonthaggi; Mrs. G. A. Hooper, 1st Cohuna; Mrs. W. Kemp, 3rd Syndal Nth.; Mrs. S. McMahon, 2nd Keysborough; Mrs. R. Keir, 1st Gunbower; Mrs. J. L. Gerrard, 4th Shepparton; Mrs. I. W. Cox, 5th Beaumaris.

### ASSISTANT BROWNIE GUIDERS

Mrs. G. W. Day, 2nd Bentleigh East; Mrs. U. Malich, 1st Sunbury; Mrs. E. Gregory, 1st East Ringwood; Mrs. B. L. Thomas, 1st Mitcham; Mrs. R. A. Murray, 3rd West Doncaster; Mrs. W. R. Napier, 10th Geelong; Miss M. A. Rouse, 1st McLeod; Mrs. E. Collier, 1st Yea; Miss M. Clarke, 4th Bayswater; Mrs. C. Baynes, 1st Mt. Beauty; Mrs. K. Walder, 1st Watchem; Mrs. L. F. Corbet, 4th Shepparton; Mrs. J. C. Moyle, 5th Beaumaris.



### REGISTRATIONS:

Bruthen Ranger Unit; 1st Stanhope Pack; 2nd Leopold-Wallington Pack; 2nd Geelong West Pack; 3rd East Doncaster Coy.; 2nd Shepparton Sth. Coy.; 2nd West Bulleen Coy.

### RETIREMENTS AND RESIGNATIONS

We acknowledge with gratitude the services given by the following whose Warrants have been returned:—

### DIVISION COMMISSIONERS:

Mrs. R. G. Young, Bacchus Marsh; Mrs. P. M. White, Knox; Mrs. G. Long, Waverley.

### DISTRICT COMMISSIONERS:

Mrs. L. Durie, Wycheproof; Mrs. G. K. Disher, Barham; Mrs. L. J. Gorman, Seymour; Mrs. G. M. Grigg, Kerrimuir; Mrs. W. J. Dean, Mt. Waverley; Mrs. J. I. Fielding, Lara; Miss P. Myles, Norlane; Mrs. C. F. R. Sherman, Jeparit; Mrs. L. Richardson, Forest Hill; Mrs. M. Kelly, Doveton; Mrs. B. Kirkham, Burwood; Mrs. A. W. Jackson, The Basin; Mrs. D. G. MacKenzie, Braybrook - North Sunshine; Mrs. C. L. Swyer, Nunawading.

### RANGER GUIDERS:

Mrs. J. A. McAra, Nth. Waverley Rangers; Mrs. S. M. Rowley, 5th Vict. Lones; Mrs. F. J. Yarwood, A.F.F. (Active) Friendship.

### ASSISTANT RANGER GUIDERS:

Mrs. A. McLeod, Maffra Rangers.

### GUIDE GUIDERS:

Mrs. B. J. Newman, 2nd Nth. Ringwood; Mrs. D. Dunnachie, 2nd Benalla; Mrs. A. G. Mills, 1st Nyah; Mrs. M. J. McLean, 1st Donvale; Mrs. C. Rickaby, 2nd East Ringwood; Mrs. G. Wiksten, 1st Dromana; Mrs. J. Knight, 1st Nth. Sunshine; Mrs. B. Sansom, 1st Rye; Mrs. L. G. Tonkin, 2nd Springvale Nth; Mrs. J. L. Coward, 1st Upper Ferntree Gully.

### ASSISTANT GUIDE GUIDERS:

Miss P. K. Amos, 3rd Glen Waverley; Mrs. J. N. Taylor, 2nd Kerrimuir; Mrs. M. McDermid, 3rd Williamstown; Mrs. J. T. Pavey, 2nd Maryvale; Mrs. L. C. Mullen, 2nd West Doncaster; Mrs. M. E. Scott, 2nd West Doncaster; Mrs. M. L. Woodhead, 2nd Nth. Ringwood; Miss P. A. Sutherland, 1st Geelong West; Mrs. J. D. Harper, 5th Templestowe; Mrs. S. Warner, 2nd Nunawading; Miss L. Quick, 1st Nunawading; Mrs. D. Houston, 2nd Springvale North; Mrs. I. L. Anderson, 1st Tullamarine; Miss J. Blunt, 2nd Newborough; Mrs. P. W. Watson, 3rd Strathmore; Miss C. Tice, 1st Pascoe Vale.

### BROWNIE GUIDERS:

Miss C. Horwood, 5th Preston; Mrs. E. Turner, 1st Yarraville; Miss H. Darnley, 4th Kerrimuir; Miss S. Kennedy, 6th Nth. Kew; Mrs. C. B. Burchett, 1st Flinders; Miss F. Cox, 1st Dandenong; Miss A. K. Muir, 1st Creswick; Mrs. B. J. Thompson, 1st Werribee; Miss K. Rye, 1st Nth. Sunshine; Mrs. R. G. Bell, 1st West Doncaster; Mrs. R. A. Murray, 2nd West Doncaster; Mrs. K. Smith, 1st Templestowe; Mrs. M. J. Parker, 3rd Nunawading; Mrs. A. J. Class, 3rd Seymour; Mrs. E. B. Shuttleworth, 1st Wendouree; Mrs. D. M. Calvert, 8th Colac; Mrs. K. G. Smith, 1st Nullawarre; Miss B. Warwick, 1st Shelford; Mrs. H. J. Bahrend, 1st Upper Ferntree Gully; Mrs. O. N. LeMarquand, 1st Skipton; Mrs. H. Keltie, 1st Wonthaggi; Mrs. J. I. Watson, 3rd Cheltenham.

### ASSISTANT BROWNIE GUIDERS:

Mrs. B. Degenhardt, 1st Glen Waverley; Miss D. Palmer, 3rd Dandenong; Mrs. G. Guy, 1st East Ringwood; Mrs. R. A. Burt, 2nd Werribee; Mrs. P. Stephens, 2nd Bentleigh; Mrs. K. Nero, 2nd Wangaratta; Mrs. R. B. Crowe, 1st Keysborough; Mrs. G. M. Holden, 1st Airport West; Mrs. E. Farmer, 1st Newborough; Mrs. W. J. Peters, 1st Newborough; Mrs. W. Kemp, 3rd Syndal Nth.; Mrs. J. L. Gerrard, 4th Shepparton.



My young sister came home from her first Brownie meeting. My Mum asked if she enjoyed it.

"Oh, yes," she replied. "There was ever such a nice lady there."

"Was there, dear? And who was she?" Mum asked.

"Brown Ale," was the reply.

(From "Te Rama," New Zealand.)