

# MATILDA



JUNE, 1974

VOLUME 51

NUMBER 11

Dear Members and Friends,

I am very pleased to be able to tell you all that Lady Winneke, wife of our new Governor, has graciously accepted our invitation to become State President of the Girl Guides' Association of Victoria. Lady Winneke has not previously been a member of the Guide Movement, but has always shown a keen interest in our activities and, of course, knows much of our aims and ideals through her husband's connection with Scouting. I know you will be as thrilled as I am with this news. We look forward to having Lady Winneke as a member of our family and to the happy times which I know we will have together. We are very lucky to continue to enjoy this contact with the Crown. The Governor is, as you know, the representative of the Queen in Victoria and service to the Queen and our country is part of that Promise which binds us all together as members of a worldwide family.

I am also delighted to be able to tell you that Mrs. D. Curtis-Otter has been appointed Assistant Chief Commissioner for Australia. Those of you who have been active in Guiding for many years will remember Mrs. Curtis-Otter when she was State Commissioner for Victoria (1953-1958). Public Relations was her special field and, following her move to Sydney, she served as Public Relations Adviser for Australia.



**From our State  
Commissioner**

By now you will have heard that the Scout Association has decided to admit girls to membership in the Rover Section and the Venture Section. We knew that they were thinking about this and we shall watch this development with great interest. If this decision means that more girls are brought into contact with the aims and ideals of the Scout and Guide Movements and it keeps girls in touch who were outgrowing Guide units, then this is a good thing. I am confident, though, that most girls would prefer to belong to Guide units, coming together with the Scouts for combined activities when the girls and boys desire them. It does mean that in the future we will have to make more certain than ever before that our Guide Programme and our training for Leaders are filling the need of the young girls and women of to-day.

With love and best wishes,

*Joan E. Grimwade*

---

**It is with regret that we record the death of one of Guiding's friends—T. C. Lothian, Esq.**

Several years ago Mr. Lothian saw the work that Guiding was doing through its camping programme and was inspired to set up the T. C. Lothian Trust which has enabled a number of our young members to take part in camps and interstate holidays which they would not have been able to enjoy without this assistance.

We record our appreciation of the benefits deriving from the T. C. Lothian Trust and extend our sympathy to the members of his family.



# MATILDA

PUBLISHED BY THE GIRL GUIDES ASSOCIATION OF VICTORIA  
20 RUSSELL STREET, MELBOURNE, VICTORIA, AUSTRALIA, 3000

State Commissioner: MRS. F. S. GRIMWADE

State Secretary: MISS M. W. BARR

Assistant State Commissioners: MRS. D. O. OLDFIELD

MRS. A. J. TURNBULL

Editor: MISS MARGARET SHAW

---

## FROM THE WORLD BUREAU

Olave, Lady Baden-Powell, F.A.O. Ceres  
for 1973.

"We would like you to be our Ceres for 1973. We are asking you this because we can think of no other person alive to-day who has served young people so long and so imaginatively. In thus leading young people you have anticipated many of the personal and social ideals on which the United Nations were founded. . . . As regards the particular aims of F.A.O., you have taught a respect for nature and for all living things. . . ." This quote comes from the F.A.O. request that Lady Baden-Powell appear on the Ceres medal.

Olave, Lady Baden-Powell has been selected to feature on the 1973 Ceres Medal issued by the **Food and Agriculture Organisation of the United Nations**. This medal is part of the F.A.O. Coin and Medal Programme which publicises the "food for all" message across the world and highlights the important rôle of women in nutrition and "grow more food" campaigns.

The World Chief Guide was selected to represent Ceres on the medal in recognition of her rôle since 1930 as World Chief Guide of the now six-and-a-half-million strong Girl Guide and Girl Scout Movement, and to acknowledge the increasing involvement of the Movement in nutrition and rural development, and the work with girls and mothers among the less privileged sections of the population.

On the obverse of the coin, Lady Baden-Powell, in profile, represents Ceres, the Roman Goddess of Agriculture, while on the

reverse there are three girls of Brownie, Guide and Ranger age with the inscription, "Toward Food, Education, Employment for All," to commemorate the twenty-fifth anniversary of the Universal Declaration of Human Rights.

On 22nd February, 1974, Lady Baden-Powell's 85th birthday, Mrs. Helvi Sipilä, United Nations Assistant Secretary-General for Social Development and Humanitarian Affairs, flew to London from New York especially to make the presentation.

In a simple ceremony Mrs. Sipilä presented a set of the medals to the World Chief Guide in the presence of Miss Cozens-Hardy, Chairman of the World Committee of W.A.G.G.S., Begum M.Z.B. Sherazee, Vice-chairman, Miss Lyn Joynt, Director of the World Bureau, W.A.G.G.S., and Lady Baden-Powell's immediate family.

Following the presentation Mrs. Sipilä, who has been in the Girl Guide/Girl Scout Movement for many years, and is a former Member of the World Committee of W.A.G.G.S., paid tribute to Lady Baden-Powell.

Some excerpts:

*" . . . I think you and your Girl Guide Movement will always be remembered as one of the most remarkable ones in training girls and women for responsible positions in the world, in their own countries, in their own localities. F.A.O. especially wanted to feature you this year . . . because of great gratitude for all that Girl Guides have done in a worldwide campaign for Freedom from*

*Hunger. Girl Guiding has really shown what you can do when many people act with devotion and conviction for the same purpose, and when they are well-disciplined and well-educated and trained to use their mind and their hands and their heart.*

*"For me, dear Chief Guide, this is a day which in some way symbolises you yourself. How many times have you gone to see Girl Guides all over the world, never thinking of yourself . . . trying to do your best in order to bring your family together?"*

*" . . . I thank you on behalf of your own Girl Guides and on behalf of the world. You have really been an example to the whole world of how one woman can extend her family to cover all nations in the world, to love them, to try to give your best to them. You have never finished doing it, and you do it still. . . ."*

Lady Baden-Powell, accepting the medal on behalf of our six-and-a-half-million members, replied:

*" . . . Ceres is the Goddess of Plenty. I hope it may be symbolic when people buy this coin all over the world. They will think of plenty of everything that is good and fine and right—plenty of support and plenty of people trying to make this world a happier and a better place to live in. After all, we in the Guide Movement have the similar object in our minds as the United Nations has—of goodwill between nations, bringing people together in comradeship and in goodwill and in understanding, and so I feel we are more closely connected with the United Nations through the giving of this coin.*

*" . . . I do trust that this day will stand out in the history of the Guide Movement as an important milestone in our history as we progress and grow and spread. . . . Let us pay tribute in our minds to all those millions who have been in our ranks as children and have grown up in the Movement and especially all honour is due to our leaders in their thousands all across the world who are keeping the Movement alive and growing. . . . We can help soothe troubles and make friendships between rivals and people who are of different thoughts and different plans, and we are surely one with the United Nations in helping to bring peace and goodwill and friendliness to people all the world over. . . ."*

A million aluminium replicas of the medal will be distributed free by F.A.O. to National Organisations. The medal is also available in bronze at U.S. \$13, in bronze-gilt at \$17, in silver at \$60, and in gold at \$60 from the F.A.O. Coin Office, F.A.O., 00100 Rome, Italy.

(Victoria expects to receive a quota of these Ceres Medals in due course and members will be advised as to their distribution as soon as practicable.)

---

## IRENE FAIRBAIRN AWARD FUND

We would like to ask each unit to set aside a week in **August** for the promotion of Australia's own special travel fund—the **Irene Fairbairn Award Fund**.

This fund was set up in honour of Irene Fairbairn, our first Australian Chief Commissioner, when she retired from that office in 1955, because of her special interest in the young members of our Movement.

It was one of Mrs. Fairbairn's DREAMS that this fund should grow to enable more and more Guides to travel, both within Australia and overseas, bringing them together with Guides and Girl Scouts from all over the world.

This year the Award went towards the fare of the leader attending the camp at Chen-Chin Lake in Taiwan. Another \$800 is allocated for the World Association Juliette Low Seminars for the 18-25 year age group at the four World Centres.

It is suggested that during this Promotion week every unit in Victoria include something special in their programme to celebrate their participation in this DREAM of Mrs. Fairbairn.

In the next few months exciting ideas, for inclusion in your Irene Fairbairn programme, will appear in "Matilda."

**All we have to do to make the Fund work is to make it grow. So start thinking, and watch next month's "Matilda"!**

SHIRLEY FARROW.



## THERE'S NO SHORTAGE OF GOOD LEADERS

If a positive approach to recruitment is taken, there is no shortage of good scout leaders.

This is the contention of a professional scouter who supports his opinion with irrefutable facts.

Owen Dillon is one of eight Field Commissioners responsible for development in the Scout Association of New Zealand.

His dynamic and likeable personality carries conviction even without the impressive figures he is able to quote regarding the N.Z. Association's success in expanding both boy and leader membership.

Interviewed during his recent Australian visit in which he took in all States and the Woodhouse Jamboree, Owen emphasised the need for a completely positive approach in recruitment.

His successful formula is E.H.P.: Enthusiasm—Honesty—Positive Thinking.

As demonstration of its effectiveness, he held a "brain storming" with one Group Committee. Each member was asked to write down the names of as many people he could think of who would make suitable scout leaders. Without discussion of the people listed and without regard to their likely availability or any other considerations—each wrote the names of those he considered would be ideal leaders.

In seven minutes they had over 200 names.

A positive approach must be taken when interviewing the prospective recruit. Phrasing is important: "You wouldn't like to become a scout leader, would you?" will get the negative answer you asked for. Try instead: "We've looked at all the people in our neighbourhood and feel that you would be ideal to do this community service."

If your prospect is a busy person (and he probably is if he's any good), don't hesitate to approach him because of that; let him decide; you might be offering him the opportunity he has been waiting for.

If his answer is "no," don't leave it at that. Ask him to suggest two or three people whom he believes would be suitable.

Then perhaps he will join your recruiting team and interview these people.

There is no difficulty in finding leaders, but, Owen Dillon admits, the difficulty is to find people who know how to find leaders.

To convert shy, tentative or negative committeemen into effective recruiters, have them adopt the E.H.P. formula.

### Using Scouts for Recruitment

Adults see all the problems; with kids it's different. They're positive, uninhibited and won't take no for an answer.

Why not ask the boys who they would like as leaders, and have them approach the chosen prospect?

Owen tells the story of how one lucky prospective leader was chosen by the scouts. One evening when this man arrived home there were three boys waiting for him. They put their request which was courteously refused.

Next evening three more scouts were on his doorstep and the same dialogue ensued. After a fortnight of this he decided that they must really have wanted him and it was easier to give up anyway.

That was eight years ago. He is now a D.C. and is happy with his life in scouting.

In one district in New Zealand recently, scouts found 18 leaders in six weeks.

Owen reminds us also that boys can be induced to recruit boys.

By the same token, he believes that every leader should be able to recruit a leader.

Getting people involved in scouting initially through their hobbies has proved effective. Giving talks or demonstrations can lead to instructor, resource adviser, examiner, which can lead to taking a warrant.

### Parent Involvement

Owen Dillon believes in having the parents involved in the Group right from the moment their son joins. (We have heard of Groups where they become involved when their son is put on the waiting list.)

In N.Z. the Parent Consent form requests that parents indicate two ways in which they can assist the Group.

Within two or three weeks of their son joining, Owen says, "it is vital to take them up on their offer, give them a task, make them feel that they, too, have been admitted to the movement."

It is imperative that we do not accept that it is difficult to recruit good leaders. If we double the number of leaders, we can double the number of boys.

The economics of this proposition also are attractive. Doubling revenue from membership fees without a corresponding increase

in operating costs means there is more money available to improve scouting facilities.

The N.Z. Association concentrates most of its recruiting effort in the larger population centres because of the greater potential for increasing membership.

This policy has resulted in the boy intake in Auckland almost doubling in four years. It has achieved a penetration of approximately 16.8% of boys of scout age in the total population. They now aim for 20%.

This does not mean that country districts are neglected.

With eight field commissioners actively promoting development, Scouting in N.Z. is in very healthy shape.

Usually, at any one time, at least one of the eight field commissioners is overseas, studying scouting methods and looking for new ideas which can be adapted to N.Z. conditions. Hence Owen Dillon's recent Australian visit.

With the vigorous and positive attitude of our New Zealand brother scouts, it seems that they have at least as much to give as to receive in the trading of successful ideas.

(From "Victorian Scout.")

## CENTS FOR SERVICE

Dear Matilda,

For Cents for Service 1st and 2nd Heywood Brownies decided on a lamington drive.

Discussion at the meeting went something like this: "Each Brownie can bring her orders from Mum and Grannie. Leaders will bake some cake on Friday, and the Brownies come on Saturday to dip lamingtons, and deliver orders—probably a couple of dozen each."

So much for planning! One Brownie alone brought orders for fifty dozen lamingtons. And the entire district suddenly developed an insatiable appetite for lamingtons.

Eventually we made over 300 dozen lamingtons which gave as a net result: A lovely profit for Cents for Service, some exhausted personnel, and several leaders' families who hope never to see a lamington again.

Has anyone a suggestion for using up left-over cake?

Yours lightheartedly,  
RAE J. HAMBLIN,  
Assistant Brownie Guider, 1st Heywood.

P.O. Box 90,  
Cobden.

Miss P. Barr,  
Girl Guides' Association.  
Dear Madam,

At the recent thirty-second Quota Conference, the resolution was passed that all bush walkers be encouraged to carry an iridescent red or orange jacket to wear should they become lost, and thus aid the searchers.

I am sure that you agree that bush walkers of all ages are periodically lost whilst hiking in the bush and large sums of moneys are spent to organise search parties.

As a responsible Quota Club we wish to request that members of your Hiking Club consider the carrying of bright-coloured jackets, etc., when on these trips.

On behalf of the Quota Club of Cobden,  
Yours sincerely,  
(Miss) J. ROBERTS,  
Hon. Secretary.

## BRIDGING CONTINENTS

Film star, Danny Kaye—the Ambassador At Large for U.N.I.C.E.F. for the last two decades—led one hundred and fifty children from around the world in a colourful march across the first bridge ever built between Europe and Asia, over the Bosphorus.

The march took place as part of the ceremonies to mark the opening of the bridge. The walk began on the European side of Istanbul and finished on the Asian side. The President of the Turkish Republic and 3,000 dignitaries walked the reverse way, from Asia to Europe, over the new bridge.

Danny Kaye visited Turkey for the opening of the bridge before taking part in a series of festivals and concerts to raise funds for U.N.I.C.E.F. in a number of European countries. His companions on the walk over the new bridge were children from the international community in Istanbul, dressed in their national costumes.

A Turkish postage stamp, designed in honour of U.N.I.C.E.F., depicts the bridge with one child sitting in Asia and one in Europe, holding hands.

The Fund has been active in Turkey for many years, in health services, nutrition including feeding, educational and pre-vocational training.

## A CAKE FOR A PRINCESS

1947

At the time of her marriage, our Queen of Australia, Her Majesty Queen Elizabeth II, was Her Royal Highness the Princess Elizabeth, Sea-Ranger of the Sea-Ranger ship, "Duke of York."

The Princess had been a Guide since she was eleven years old, when the 1st Buckingham Palace Company had been formed. What could the Guides of Australia send to their sister-Guide? "A WEDDING CAKE," suggested Mrs. C. O. Fairbairn, Honorary Secretary to the Federal Council of Australia. Would they like to do that? Could they?

WOULD THEY!!! and THEY COULD!!!

So soon after the end of World War II butter and sugar were rationed, bought only by giving up coupons—a few ounces of butter a week for each person, sugar very meagre, and both far more drastically short in England. Other items too were in short supply.

Guides would gladly have given up the coupons needed, but when the authorities heard of the plan, they allowed the ingredients to be "off the ration." So pennies and shillings only came flowing in. Mrs. Fairbairn had to apply for permission from Buckingham Palace for the Princess to accept a cake; and to the departments in Australia for permits for export and freight space on one of the very few ships. She asked advice from the Chief Chef at a big hotel; he referred her to the caterers who made the wedding cakes for the receptions held there. The management with great interest gave her the recipe for a three-tiered cake.

On a Monday when the last of the permits came through, she was informed that a ship would leave for England on the Wednesday that week, and no one could tell when the next one was due. Mrs. Fairbairn took the list of ingredients to R. and G. Wilson, the grocers of Elizabeth Street (who have just closed their shop because of "development"). They rushed through all final formalities, packed and labelled the boxes, and delivered them to the wharf on time.

In England the Guides as well as the Palace had been told of it and took their part on delivery.

The boxes were sent to McVitty and Price of Edinburgh who made a beautiful cake that appeared, with others, at the wedding banquet.

One tier was used on the wedding day; one was kept, and appeared on the occasion, a year later, of the baptism of Prince Charles. The Princess sent the third back to Australia, to acknowledge as her guests, though so far away, the Guides who had thought of her.

Mrs. Fairbairn chose the Extension Branch, Victoria, to receive the tier, but we have never yet found out actually  
WHO ATE THE ROYAL CAKE.

Soon afterwards, by a change in the Constitution, Mrs. Fairbairn became the first Chief Commissioner for Australia. She told us the story of the cake, for the Archives of Australia, shortly before her last illness, which ended peacefully in March, 1974.

---

In November, 1972, the Wentworth Guide Hall was burnt out—and re-built just one year later. At the opening of the Hut, two Thank-you Badges were presented by the Wentworth Local Association. Mrs. Brookshaw received her badge for the years she has collected, sorted and despatched old rags to Adelaide, and handed the proceeds to the Local Association—over \$210. The L.A. are very grateful for this sustained effort.

Mr. K. Moore drew the plan, ordered the materials, and oversaw the rebuilding of the Hut. He organised working bees, and did a lot of the building of the hut itself.



The hut was rebuilt after help from the Shire Council and friends of and in the Guide Movement.

It was opened by Mrs. Mary Whitton, a former District Commissioner, who travelled some 200 miles to be with us.

Well over 100 people attended the opening and saw an Australian flag presented to 1st Wentworth Co. by 1st Merbein Guides.

Afternoon tea and lots of talk concluded a very happy event.

(From stories by Guides and Brownies of 1st Wentworth.)

## G.A.P.

### Gathering of Asian Pacific Trainers in New Zealand.

The theme—

“Build a bridge from Country to Country  
From heart to heart  
From Earth to Heaven.”

Countries represented—

Australia, British Solomon Islands, Cook Islands, Fiji, Gilbert and Ellice Islands, Hong Kong, India, Indonesia, Japan, Malaysia, Nepal, New Hebrides, Pakistan, Philippines, Singapore, Sri Lanka, Thailand, Western Samoa, and New Zealand.

Australia was represented at the Gathering by Miss E. Shirley, N.S.W., Contingent Leader Mrs. C. Clark, Mrs. E. Hawke and Mrs. J. Twist, Victoria.

Most overseas delegates were able to get to know one another on a five-day bus tour between Auckland and Arahina Training Centre at Marton, spending four nights billeted with guiding people.

Highlights of this tour started with a very impressive welcome to New Zealand at Guide Headquarters, Auckland. A visit was made to Otami, the provincial campsite, and the hot springs and Maori Village at Rotorua.

A huge gathering of Brownies, Guides, Rangers and leaders at Hastings demonstrated their work and play and then took part in a ceremony. Each delegate's name tag was taken and burnt and in return waddles, made from natural wood with a Maori name burnt on them and a leather thong threaded through them, were hung around the delegates' necks.

Glorious weather and a beautiful setting on the lawns of Arahina, the New Zealand Training Centre at Marton, was a very fitting start to our Conference.

An address by Mrs. Turnbull, Chief Commissioner for New Zealand, was followed by a welcome from Miss English, the Conference Convener. The official opening was by the Mayor of Marton. The World Flag, then the New Zealand Flag, were broken, followed by the flags of all the delegate countries, after which the bridging of the gaps between countries present at the Conference was achieved by placing their country's flag on a bridge already spanning the gaps on a specially-prepared map.

The Planning Committee from Australia, Philippines, and New Zealand supplied a very varied and interesting programme.

They took sessions on—among things—

Workshop in Application of Training Methods and Skills; W.A.G.G.S.; Planning of Training Sessions; Making of Visual Aids; Human Relationships; Guiding the Girl.

Outside experts spoke on:—

The Rôle of Non-directive Director in Shared Leadership; Preparation of Publicity Materials; Chairing of Meetings.

Overseas delegates presented various sessions including subjects such as:—

Presentation of Guiding Programme; Training Administration; Guiding in the Community; Adaptation of Modern Education Techniques. Entertainment consisted of campfires—indoor and outdoor—items of songs, dances and slides from the different countries and a Japanese Tea Ceremony. At an International Dinner Australia contributed the wine.

At the Closing Ceremony, where all the flags were lowered together, each delegate went forward to receive a piece of totara wood from a miniature bridge to take home as a memento of a wonderful experience. Contingent leaders spoke a few words expressing the delegates' hopes for the future of Guiding. Then it was “Go Well and Safely” for our New Zealand delegates, and time for the rest of us to repack for a further tour.

This time we journeyed from Arahina to Christchurch, enjoying on the way a Brownie Pack holiday and a Guide camp, Shanty Town—an old gold-mining community, a Maori church, a Mayoral dinner at Lower Hutt, morning coffee with the Prime Minister and his Ministers at Government House, a very pleasant boat trip from Wellington to Picton, a Mayoral reception at Christchurch Town Hall and on to what was for most of us our last night in New Zealand spent at “The Barn.”

Farewells, some very tearful, were said at the Barn, Christchurch, with delegates going their various ways after a farewell dinner at H.Q.—some for an extended stay in New Zealand, some for visits to Australia or other countries en route for home, or straight home.

All delegates, I am sure, felt a great sense of achievement, a much deeper feeling and understanding of individuals and their countries, also a much wider outlook on guiding throughout the world.

EVA HAWKE.



## TRAINING CALENDAR, JUNE, 1974

Commissioners and Unit Leaders with the necessary experience are welcome to apply for any Training.

Applications to be sent as directed by the date requested and should be accompanied by the Training Fee and a stamped, self-addressed envelope.

Training fees are \$1.00 unless otherwise stated.



### Stage 1 Training—for Leaders new to the Movement:

**Bentleigh:** 11th, 25th September; 2nd, 9th, 16th October, 7.30 p.m. to 9.30 p.m., plus week-end, 14/15th September, 10.00 a.m. to 4.00 p.m.—Methodist Church Hall. Applications to Mrs. A. Watsford, 6 Millis Avenue, East Bentleigh, 3165. Closing date: **29th August.**

**Dandenong:** 13th, 14th July and 10th, 11th August, 10.00 a.m. to 4.00 p.m.—Special School, Heatherton Road. Applications to Mrs. M. Smith, 6 Jeffrey Street, Dandenong, 3175. Closing date: **28th June.**

**Headquarters:** 19th, 26th June; 3rd, 10th, 17th July, 10.00 a.m. to 3.00 p.m. Applications to Training Department, 20 Russell Street, Melbourne. Closing date: **7th June.**

**Wodonga:** 22nd, 23rd June and 6th, 7th July, 10.00 a.m. to 4.00 p.m. Applications to Mrs. D. Hamilton, "Hamilton Park," South Wangaratta, 3677. Closing date: **7th June.**

**Western Border Region:** 17th, 18th August and 21st, 22nd September, 10.00 a.m. to 4.00 p.m. Further information from Mrs. D. Maconachie, 372 North Boundary Road, Hamilton, 3300.



### Stage 2 Training—for Warranted Leaders:

Please note: Stage 2 Training is planned around topics and help requested prior to the course by those taking part. Requests for training are to be forwarded with application forms to Region Training Advisers before the closing date.

**Bendigo:** 6th, 7th July and 3rd, 4th August, 10.00 a.m. to 4.00 p.m. (Please bring lunch.) Applications to Mrs. R. Wilkins, 14 Scott Street, White Hills, 3550. Closing date: **21st June.**

**Doveton:** 29th, 30th June and 27th, 28th July, 10.00 a.m. to 4.00 p.m.—Presbyterian Kindergarten, Ti Tree Drive. Applications to Mrs. M. Smith, 6 Jeffrey Street, Dandenong, 3175. Closing date: **14th June.**

**Surrey Hills:** 2nd, 9th, 16th, 23rd, 30th July, 10.00 a.m. to 3.00 p.m.—Holy Trinity, Union Road. Applications to Mrs. F. Ludbrook, 5 Curnola Avenue, Doncaster, 3108. Closing date: **18th June.**

**Wangaratta:** 13th, 14th July and 10th, 11th August, 10.00 a.m. to 4.00 p.m. Applications to Mrs. D. Hamilton, "Hamilton Park," South Wangaratta, 3677. Closing date: **28th June.**

### Stage 3 Training—for Warranted Leaders:

**Dandenong:** 21st, 22nd September and 19th, 20th October, 10.00 a.m. to 4.00 p.m. Applications to Mrs. M. Smith, 6 Jeffrey Street, Dandenong, 3175. Closing date: **6th September.**

**Headquarters:** 22nd, 23rd June and 13th, 27th July, 10.00 a.m. to 4.30 p.m. Applications to Training Department, 20 Russell Street, Melbourne, 3000. Closing date: **7th June.**

**Mildura:** 14th, 15th September and 26th, 27th October. Applications to Mrs. B. Hocking, 812 14th Street, Mildura, 3500. Closing date: **30th August.**



### Pack Holiday Training:

**Creswick:** 27th, 28th July, 10.00 a.m., Saturday, to 4.00 p.m., Sunday—Lingbogel. \$1.00 plus cost of food. Note: Please bring bedding. Applications to Mrs. G. Platt, P.O. Box 31, Ballan, 3342. Closing date: **12th July.**

**Tynong North:** 12th - 14th July, 6.00 p.m., Friday, till 3.00 p.m., Sunday. Cost approximately \$5.00. Applications to Mrs. A. Watsford, 6 Millis Avenue, East Bentleigh, 3165. Closing date: **28th June.**

**Western Border Region:** 17th, 18th August, 10.00 a.m. to 8.30 p.m., Saturday, and 10.00 a.m. to 3.30 p.m., Sunday. Further information from Mrs. D. Maconachie, 372 North Boundary Road, Hamilton, 3300.



### Campcraft Training:

**Cheltenham:** 13th, 20th September; October 11th, 7.30 p.m. to 9.30 p.m., plus 21st-28th September, 10.00 a.m. to 2.30 p.m., and week-end, 5th-6th October. Further information from Mrs. A. Watsford, 6 Millis Avenue, East Bentleigh, 3165.

**Essendon and Britannia Park:** 26th June; 3rd, 10th July, 7.00 p.m. till 10.00 p.m.—Methodist Church Hall, Mt. Alexander Road. Week-ends, 6th/7th July and 3rd/4th August—times to be advised. Fee \$1.00 plus cost of week-ends. Applications to Miss J. Mills, c/o Nurses' Home, P.A.N.C.H., Bell Street, Preston, 3072. Closing date: **10th June.**

**Lingobel, Creswick:** Week-ends, 27th/28th July, 17th/18th August, 14th/15th September, 10.00 a.m., Saturday, till 4.00 p.m., Sunday. \$1.00 plus cost of food. Note: Please bring bedding. Applications to Mrs. G. Platt, P.O. Box 31, Ballan, 3342. Closing date: **12th July.**

**Western Border Region:** 14th, 15th September, and 5th, 6th October, 10.00 a.m. to 4.00 p.m. daily. 19th/20th October, 10.00 a.m., Saturday, to 4.00 p.m., Sunday. Further information from Mrs. D. Maconachie, 372 North Boundary Road, Hamilton, 3300.

### Special Subjects:

**Headquarters: Training Day for L.A. Office-bearers.** As a result of requests received we will be holding a Training Day at Guide Headquarters on Wednesday, 7th August, from 10.00 a.m. to 2.00 p.m. (Please bring lunch.) Applications of those wishing to attend to reach the Training Department, 20 Russell Street, Melbourne, by **26th July**. Please bring lunch.



### Bushcraft Tour:

Come join us on our Bushcraft Tour this year. Dates: 24th to 31st August inclusive.

The tour will include visits to Rushworth, Bar-mah Forest, Wilga Park, Hattah Lakes, Little Desert and Green Lakes Reserve. Pleasant company—all meals provided—and a floor on which to place your lilo is assured!

Details of cost advised nearer the time.

Application forms available from Training Department, 20 Russell Street, Melbourne, 3000.

---

### "CAMP WIRREANDA"

Sherbrooke River Camp Site was our base for "Camp Wirreanda" (Camp of the Big Trees), and about 42 Guides from the Western District Divisions attended.

The Camp was run as seven patrol camps. Luckily the weather stayed fine. After a group assembly we were issued with our tents.

The camp sites were named after ships of Matthew Flinders (on whom the Camp was based). Because of fire restrictions, only one cook fire was used, making cooking a little difficult, but we managed with little fuss.

Sunday we held our Guides Own by the river bank, and each of the patrols contributed something to the service. With the help of our First-Aider, we erected a rope bridge which was used with great enthusiasm.

We were issued with challenges, including making rope ladders, burglar alarms for our camp sites and star gazing. All the girls participated enthusiastically.

We all took a night hike to Loch Ard Gorge and Sherbrooke River mouth, where we held a moonlight campfire on the sand.

We struck camp in the morning, leaving the afternoon free to use the rope bridge. We demonstrated the use of the rope bridge to the Brownies who were staying at the house, and the parents who came. Being a hot day, many of us "accidentally" fell in the river.

After the final assembly, during which we were presented with a citation for our moonlight safari, we went home.

It was a great camp, and I hope there will be many more camps like it in the future. We will remember our camp in more ways than memory, because trees were planted to mark our camp.

MARGARET SEFTON,  
Patrol Leader,  
Polwarth Division.

### STAMPS

How many of you collect stamps as a hobby? One day they could perhaps be valuable, but for the present the value is in the knowledge gained of countries near to or far from Australia.

New Zealand is a near neighbour country and in the news earlier in 1974 when the Commonwealth Games were held there. The Queen, Prince Phillip, Prince Charles and Princess Anne were all present.

You may not know of the lovely stamps issued by their Post Office, so a few notes from the N.Z. Philatelic Bulletin, Feb., 1974, are reprinted (as permitted by the publisher).

New Zealand Day.—"The five 4c stamps make up a complete set on a miniature sheet. Centre stamp is a portrait of Queen Elizabeth II who officiated at the celebrations on February 6th to mark New Zealand's first National Day. February 6th is the anniversary of the signing of the Treaty of Waitangi—the agreement between the Maori tribes and Governor Hobson. This made New Zealand a British colony. It was chosen as the day best suited to celebrate New Zealand's growing identity as a modern multi-racial nation. The four horizontal stamps reflect the historical background of Waitangi. One depicts the Treaty House at Waitangi; the second an impression of the actual signing of the Treaty by a Maori Chief and Governor Hobson; the third an architectural impression of the extensions to Parliament buildings now under construction in Wellington; and the fourth a multi-racial class of New Zealand schoolchildren."

Commonwealth Games, 1974. — "Christchurch and Dunedin hosted the 10th British Commonwealth Games and the 4th Para-

(Continued on page 260)



# gang show

the all-new all-singing all-dancing  
real live on stage amazing technicolour

SEPTEMBER 6, 7, 11, 12, 13, 14

BOOKING FORM



**the all-new all-singing all-dancing  
real live on stage amazing technicolour**

# **gang show**

**SEPTEMBER 6, 7, 11, 12, 13, 14**

**PRESENTED BY THE SCOUT ASSOCIATION OF AUSTRALIA (VIC. BRANCH)**

Gang Show returns again to the Palais Theatre, The Esplanade, St. Kilda, with a brand new look. Come and see for yourself. Our 300-strong team are waiting to bring you all the colour, comedy and spectacle that is Gang Show.

There are six evening performances and two matinees to choose from. You can purchase individual seats or Scout Groups, Guide Units and social clubs can make money on the side by purchasing blocks of ten seats at the special low rate and reselling them at the regular price. Hire a bus, train or camel train and bring everyone!

Mail bookings through the Melbourne Sports Depot are accepted right now. And from July 25 you can purchase individual tickets over the counter from the M.S.D., and blocks of ten from the M.S.D., all Scout Shops and the Guide Office. Check the booking forms opposite.

**Gang Show : once you pick it up you won't be able to put it down !**

# TRAINING PAGES

## THE ART OF GRACIOUS LIVING

An unmannerly American once said to Marshal Foch that French politeness was nothing but wind. The Marshal replied "Neither is there anything but wind in a pneumatic tyre, yet it eases wonderfully the jolts along life's highway."



George Bernard Shaw, in his play, "Pygmalion" (from which the musical, "My Fair Lady," was adapted), has Professor Higgins tell the little Cockney-accented flower girl whom he, by teaching her manners, makes a lady: "The great secret, Eliza, is not having bad manner or good manners, or any particular sort of manners, but having the same manner for all human souls."



Possessing the same manner for all people IS a rare quality; it is rooted in the ability to see every person as an individual human soul. And this—is where WE come in!

We must admit that though many of our girls are courteous in a casual fashion, our Brownies, Guides and even Rangers do not seem to know, or at least seldom practise, many niceties of social behaviour. No matter which age group we work with, a girl is never too young or too old to begin thinking and caring about others. Before true courtesy and graciousness can be expressed, its techniques must be practised.



Remember **Snakes and Ladder?** (See March, 1974—Training Pages.) Why not make them more aware through this game? The girls can make up the game, and the equipment for it. Perhaps one girl might, as a challenge, rule up a piece of cardboard, with its snakes and ladders drawn, and print in the squares (foot of ladder or head of snake) the actions taken. If the standard board is used, then have the "good manners" and "thoughtless or bad mannered" cards in two piles, face downward. When any player's counter stops at the foot of a ladder, she takes the top card from the "GOOD"

pile, and reads out what it says, before ascending the ladder. Similarly any player whose counter ends at a snake's head, reads out the top card from the "BAD" pile before descending to its tail. The used cards can then be inserted at the bottom of the pile.

The girls, too, can decide on the lapses in manners which will incur a penalty and the successes which will earn a reward. Here are some suggestions, and I am sure you and the members of your unit could think of many more.

**GOOD:** (To go up a ladder)

Replied promptly to a written invitation.

Arranged a **low** bowl of flowers in the centre of a luncheon table.

Offered a dish of butter to others before helping self.

Used soup spoon correctly (away from you).

Placed napkin correctly (folded in half) in lap.

Used butter knife to put piece of butter on the side of the plate.

Offered jam to table companion before she had to ask for it.

Stood aside to let older person enter the room first.

Put knife and fork down while chewing a mouthful.

Cut bread and Marmite (or toast) into small pieces on plate.

Checked table setting to see that all necessary servers, e.g., jam spoons, butter knives, were there.

**BAD:** (To go down snake)

Talked at table with mouthful of food.

Pointed with knife (or fork, or spoon).

Put a whole slice of bread and jam (needing both hands!) to mouth.

Cut piece of butter with own knife.  
 Scooped jam from the jar with own knife.  
 Had to be asked twice to pass the salt and pepper.  
 Monopolised the conversation.  
 Ignored one table companion because other was so vivacious.  
 Hurried from room so that closing door banged.

Saw a person drop a book but just walked past.  
 Interrupted two people speaking together to abruptly ask a question.  
 Walked to seat after late arrival at a meeting without apology or "Excuse me" to the Chairman.  
 Did not write a "Thank You" note to an Interest Badge Tester.

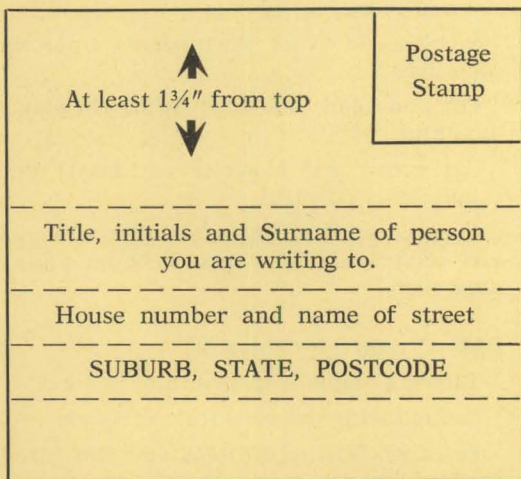
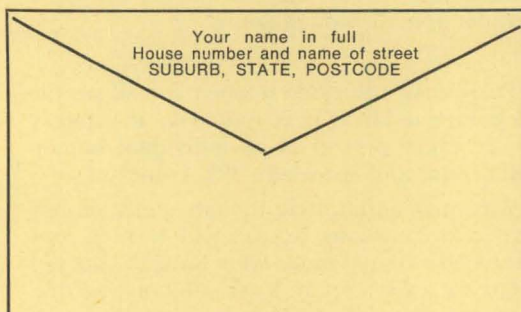
### Gracious Living Means Many Things

... Like knowing how to write a letter and being able to address it correctly—an invitation, an acceptance, and a polite refusal, not forgetting, of course, the "Thank You" letter.

Try this activity—you can adapt it for the other letters as well. You can let the girls make the equipment too. As much fun as using it!

- (a) On a piece of cardboard draw the outline of the back of a 6½" x 3½" envelope showing the flap. On the flap print the following words—

Your name in full  
 House number and name of street  
 SUBURB, STATE, POSTCODE.



- (b) On a piece of cardboard draw the outline of the front of a 6½" x 3½" envelope. Glue a used 7 cent stamp in the right-hand corner of the envelope. At least 1¾" from the top of the envelope print the following words—

Title, initials and surname of person you are writing to,  
 House number and name of street,  
 SUBURB, STATE, POSTCODE.

- (c) On a piece of cardboard glue a picture, allow to dry, on the reverse side print the following words, then cut up into a jig saw.

Your own . . .

House Number and Name  
of Street

SUBURB, STATE, POST-  
CODE.

Date.

Dear (name of person you are writing  
to),

Invitations should contain all details  
of when, where, what time and any  
special dress required.

Remember to sign your own name at  
the end of the letter.

House number and name  
of street  
Your own . . . SUBURB, STATE, POST-  
CODE  
Date.

Dear (name of person you are writing  
to),

Invitations should contain all details  
of when, where, what time and any  
special dress required.

Remember to sign your own name at  
the end of the letter.

### Gracious Living Means All sorts of Things

—like setting a table correctly and attractively—

Here's one for the Rangers! With just that certain foreign flavour that always fascinates them. Guides, too, might have a go!



Make up a card as set out below. Also make up a set of cards to fit the rectangles containing queries. Print a missing item on each one, as follows: Italy—Beef Strogonoff—Origami—water lilies—Paella—Switzerland—Small pots of cacti — Sauerkraut — England — Pavlova — North Africa—Woven tablemats and boats with paper sails—Fried Mee Hoon.

DISH	COUNTRY	TABLE DECOR
Cassata	?	Check cloth and candle in Chianti bottle
?	Russia	Red cloth—Hammer and Sickle on napkins
Suki Yaki	Japan	?
?	Spain	Round table, coin-spotted flounced cloth, napkins folded as fans
Cheese Fondu	?	"Snow" decor with Alpine accents
Chili con Carne	Mexico	?
?	Germany	Steins and Butter Bretzels
Roast Beef	?	Toby Mugs
?	Australia	Wattle Sprays
Shish Kabobs	?	Round brass tray with pears, grapes, plums, figs and nuts
Chicken Adobo	Philippines	?
?	Malaysia	Palm leaves, ferns, orchids and tigers!!!

Can you think of other ways of using this theme?

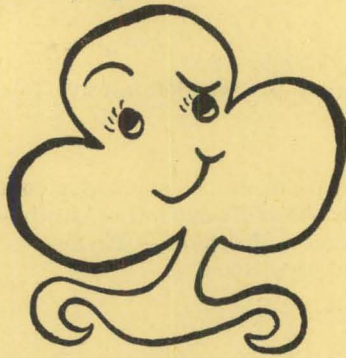
Don't forget that there are books available on Origami and on folding napkins into interesting shapes.

### Game: Table-Setting Dice

Each player has a pencil and a piece of butcher's paper approximately 10" x 6", representing a table mat. Players throw the dice in turn, each player drawing on her mat the cutlery represented by the number of her throw—6 is a dinner fork, 5 a dessert fork, 4 a soup spoon, 3 a dessert spoon, 2 a dinner knife and 1 a serviette. The winner is first finished with all cutlery drawn in its correct place.

### Patrol (or Six) Competition: Table Setting

Let each patrol (or six) choose their own meal and their own theme from set lists—OR let them choose their own outright! Table manners can come into it, too. Let them make it a gala night and appoint appropriate judges.



### SUE SAYS

#### ARE YOU A GOOD HOSTESS?

- DO**
- tell your friend ahead what the week-end plans are so she knows what to wear and when to be ready for what!
  - remember to put water or fruit juice and glass at her bedside and reading material and flowers in her room.
  - make sure that her bedside lamp is conveniently positioned and working.
  - be sure she knows your proposals and times for breakfast and other meals.
- DON'T**—pin her down with your family albums.
- organise her every minute and leave her with no time to herself.
  - bore her with only YOUR favourite records—find out and have something SHE likes too.

### AND A GOOD GUEST?

- DO**
- buy some small gift for your hostess.
  - give notice of your times and mode of arrival.
  - give some indication ahead of day and time of departure.
  - have a sixth sense about helping with domestic chores, when to offer and when to relax!
  - leave bedroom and bathroom tidy.
  - know "when" to retire to your room for a short while!
- DON'T**—forget to make your own bed.
- go out without saying where and for how long.
  - be messy with toilet articles.
  - hang on for too long at night—just say "Goodnight" and go!
  - forget that "Thank you" letter as as soon as you return home.



### SOME VIEWS ON LIVING

- "Living is the art of getting used to what we didn't expect."—Eleanor Wood.
- "Life is a flower of which love is the honey."—Victor Hugo.
- "To live is good. To live vividly is better. To live vividly together is best."—Max Eastman.



It is not often we encounter another person who actually sees us; neither is it often that WE actually look at others. It is hard work to look at someone else and think about her; usually most of us are too busy, too preoccupied with ourselves to spend the time.

Yet, isn't this what we are trying to get through to our girls when we teach them "manners"?

And isn't this truly the essence of GRACIOUS LIVING?

When we see the intense pleasure that courtesy can give, when we experience that pleasure ourselves, perhaps then we will realize that the pleasure is out of all proportion to the effort that produces it. It is more than just pleasure in a smoothed path.

Courtesy is a reassurance; it is a warm and friendly voice coming to greet us in the dark; it is a hand reaching across the empty space that surrounds every one of us.



# NOTICES

## BROWNIE GUIDE SECTION

The Brownie Guide **Writers Interest Badge**.—Leaders, please read the Clauses carefully and check the work prepared by the Brownie Guide before she presents it to the Tester.

Clause 1 states: "Write an **original story**." This means exactly what it says; it must be a story "made up" by the girl. This Clause must not be confused with Clause 3 where it clearly states: "Write a letter saying thank you for—

a present  
or  
a visit  
or  
an outing

you have enjoyed, etc."

**N.B.**—Any Interest Badge work prepared by the girls **must** be done according to the Syllabi set out in the white Interest Badge Booklet sold with each Handbook and **checked** by the Leaders before presentation.



## CAMPING DEPARTMENT

Guiders, please **DELETE** from your List of Campsites—**WALHALLA**. This is not now available.



## RAISING FUNDS? — SELL

### High Quality Retractable Ball Point Pens inscribed "Girl Guides"

For information and pens write to  
Mrs. G. Richardson,

"Boorana",

Woorndoo R.S.D.,

Mortlake,

Victoria, 3272

## 1st ARMADALE GUIDE COMPANY 1924-1974

Fiftieth birthday will be celebrated on 13th July, 1974. Anyone associated with the company in these fifty years welcome—for catering purposes we would like to know if YOU can come—2 p.m. to 4.30 p.m. Contact Miss L. Johnson, 15 Airlie Avenue, East Prahran, 51-8001; Mrs. Whittle, 37 Ercildoune Street, North Caulfield, 3161 (52-2586).

## INTERNATIONAL

**Our Chalet, 1975.**—Be one of the 3,500 people (approximately) who visit during the year. Bookings open 1st August, 1974, for Winter Bookings; 1st October, 1974, for Summer Bookings.

December 22nd - January 5th—Christmas.

January 19th - February 1st—Ski-ing.

March 2nd - March 15th—Ski tours—Trefoil and Friends of Our Chalet.

March 23rd - April 5th—Easter.

June 1st - 12th—Chalet Staff Re-union.

June 15th - 26th—Spring Flowers and Photography Session.

June 29th - July 10th—Walking and Climbing for Beginners.

July 27th - August 7th—Advanced Mountain Walking and Climbing.

September 7th - 18th—Special "Friends of Our Chalet" Session.

September 21st - October 2nd—Trefoil Session—husbands welcome.

Chalet closes April 5th - June 1st and October 2nd - December 22nd.

Except for articles where copyright restrictions are indicated, material in "Matilda" may be reprinted in Guide and Scout magazines without prior permission. A credit line would however be appreciated.

## AUSTRALIAN LINK-UP, 1974

**Australian Link-up, 1974.**—As each Guide is accepted for the events going on throughout this year she will receive a number of forms to fill in and return to Headquarters. Among these forms is one marked "Hospitality" to be returned to Mrs. Hutchinson, or her Agent. From the results of our May events it is apparent that many guides and their leaders do not understand how to use this form or what it is we are offering.

**Country Guides.**—The first half of this form is devoted to you. We are offering you hospitality **in Melbourne ONLY** for two hours, all day, or overnight, before you leave with the Victorian contingent for the camp. That is, if your train, 'plane, or bus arrives in Melbourne at 4 p.m. on Friday and you are due to travel with the Contingent at 6.30 p.m. on Saturday, you will be met, taken to the home of another guide, looked after, fed, and taken with that guide to catch your transport with the Victorian Contingent. If you fill in the details on the form Mrs. Hutchinson will know when you are arriving and have someone there to meet you. They will also see you on to your homeward transport if necessary.

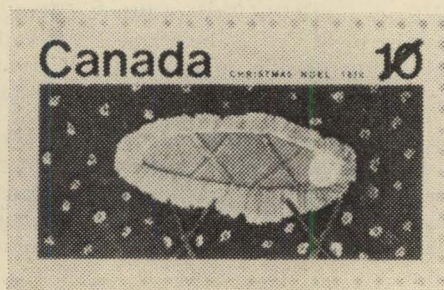
**Metropolitan Guides.**—This is where you come in. Yours is the lower half of the form. You can offer hospitality to billet overnight, or just look after for the day, a guide who is attending the same camp as you. You meet her when she arrives in Melbourne and look after her until it is time for you both to leave for your camp. You go to the train, 'plane, or bus together and travel to your destination together. You may be split up during camp, but you will meet together on the way home and see her back to her transport home. Many good friendships start this way.

**Metropolitan Guides.**—If you are selected to go on our Train Trek in August please offer hospitality. You may get an interstate or country guide to look after before you leave together on the Train Trek.

Hospitality enquiries are made to Mrs. Hutchinson or her Agent—all other Link-up enquiries should be made to Guide Headquarters.

**Both Country and Metropolitan Guides.**—You do not need to worry about your stay

interstate, as this is set up by the State concerned. When an interstate invitation is sent out that State always expects to provide overnight hospitality for the guides from other States.



**STAMPS** (from page 254).

plegic Games. Both events were marked by a special stamp issue and a special souvenir stamp pack." They show various sports competed in at the Games by athletes from many places. The values are 4c, 5c, 10c, 18c and 23c.

Scenic lakes, and majestic mountains are on stamps issued in 1973 and are like miniature paintings and well worth having; as also are those issued for Health, for Christmas, and those showing the many lovely Alpine flowers.

People interested may write for free copies of the New Zealand Philatelic Bulletin. For inclusion on the mailing list, the address is:

Marketing Manager,  
Post Office Headquarters,  
7-27 Waterloo Quay,  
Wellington, New Zealand.

A mention of "Matilda's" pages would interest their staff.

LORNA E. CUZENS,  
6/86 Park Street, St. Kilda, 3182.

### L.A. CONFERENCE

Reference page 211 — APRIL, 1974.  
The years got mixed here — this conference was, of course, held in 1973 and there will **not** be a repeat this year.

**ADULT ADVENTURE SESSION—  
OUR CABANA  
(Folk Arts in Mexico)**

A wonderful welcome to Mexican Culture awaits at Our Cabana for this one- or two-week holiday adventure. Special consultants on hand to teach you arts and crafts, folk dances and typical songs. You'll help plan a Mexican fiesta complete with pinata, posada and live mariachi music.

Visit the silver centre of Taxco and shop in the open-air market of Cuernavaca. See native artisans working in silver, ceramic, leather and straw. You'll tour some of Cuernavaca's loveliest colonial mansions and share your talents with our service project children of Gualupita. Climb a pyramid!

Explore the exciting world of International Guiding and Scouting and compare notes on the folk arts programmes of other countries. Relax in an ideal sunny climate at our swimming pool.

An informal atmosphere prevails and the Cabana staff will help you plan historical sightseeing and shopping tours of your choice. Go at your own pace.

Those staying two weeks have a FREE WEEK-END to plan trips to Mexico City or Acapulco or wherever.

COST: \$10.00 U.S. daily for room and board in modern living quarters. \$20.00-\$25.00 U.S. for programme activities. (Free week-end excluded.)

Daily flights to Mexico with excellent bus and taxi service available to Cuernavaca.

DATES: November 11-17, 1974-November 11-23, 1974.



The human brain is a wonderful thing. It operates from the moment you're born until the first time you get up to make a public speech.



When it comes to giving some people stop at nothing.

**VACATION JOBS AT OUR CABANA**

DATES: June 1 to August 31, 1975.

COMPENSATION: Room and Board plus \$400.00 U.S. Cy. Transportation is not paid.

HOW TO APPLY: Write directly to Miss Maria Laura Avina, Guider in Charge, Our Cabana, Apartado Postal 406, Cuernavaca, Morelos, Mexico. Applications and reference forms are sent upon request. Final selections will be made with the approval of the International Commissioner of the applicant's country.

**GENERAL QUALIFICATIONS:**

1. Be a registered member of the Girl Guide/Girl Scout Association in her own country.
2. Have evidenced an interest in working with girls of the Senior/Ranger level. (A knowledge of Spanish is helpful.)

**ASSISTANT TO THE PROGRAMME  
DIRECTOR**

Specific Qualifications:

1. Be at least 23 years of age.
2. Work, experience or training in the development of a folk arts programme.
3. Ability to develop and adapt creative crafts that can be used in working with village children and adults in service projects. Ability to manage and conduct groups on sightseeing tours.

**WATERFRONT DIRECTOR**

Specific Qualifications:

1. Be at least 21 years of age.
2. Have current Senior Life Saving Certificate.
3. Experience in planning water activities and sports programmes with girls.
4. Ability to manage and conduct groups on sightseeing tours.

**All Applications must be received at  
Our Cabana by December 31, 1974.**



**Great Britain.**—The October, 1974, London "Gang Show" will be the last. Ralph Reader, who has written hundreds of "Gang Show" songs and sketches since he produced the first show in 1932, has turned 71 and decided to retire. His material has been used not only in the United Kingdom but around the globe for locally-produced "Gang Shows" and will continue to be available to Scouts everywhere.

(From "World Scouting" Newsletter.)

# LOCAL



# ASSOCIATION SECTION

## THOUGHT FOR THE MONTH

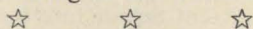
When you criticise the younger generation just remember who it was who raised it.

## THE PERSONAL TOUCH

St. Arnaud Local Association had the best attendance for many years at their District Annual Meeting held in March. This was ensured by each regular member being responsible for contacting others personally instead of sending the usual notice home with the guides and brownie guides, as well as inserting a notice of meeting in the local paper.

The Mayor and Mayoress were present, and, together with everyone else who attended, enjoyed hearing reports of the whole District's activities. The highlight of the Brownie Pack's report was its involvement with Murdoch House, a new centre for handicapped people. The Brownies had visited them and presented a rug they had made, and joined the children in some of their activities.

The reports were followed by a Promise Ceremony for two Brownie Guides, then showing of slides taken by two Guides during a trip last year. Supper concluded a very pleasant evening and a well-stocked trading table helped to pay the expenses involved—the hiring of the Town Hall.



## L.A. PROMISE CEREMONY

"I hope I can remember the words—'I promise that I will do my best . . .' Good, I do remember them."

Brownies ready for enrolment? No! Brownie Mothers ready to say the Promise and become enrolled members of the Guide Movement and of Buninyong/Grenville Local Association.

At a Saturday morning Pack Meeting, the L.A. members—all mothers of Brownies—were led up one at a time by their Brownie daughters to the District Commissioner and Brown Owl, and standing before the Toadstool and the Brownie Pack, became enrolled L.A. members. To quite a few mothers it brought back memories of their own enrolment as brownies and guides many years ago, and the Brownies themselves gained added interest in Guiding.

This idea came from the enthusiastic Brown Owl and Tawny, both tireless workers for the Movement, and the members of Buninyong/Grenville L.A. would like to pass it on to other Packs and Companies so that their members may share some of the fun and work with their mothers.



## THE GORDON POISON CABINET

Every year children under five years of age are the ones most involved in accidents of poisoning. Hundreds of children are treated at the Royal Children's Hospital after swallowing poisonous substances.

Professor Douglas Gordon of Queensland University has designed a cabinet with a self-locking door which is fool-proof for the young child.

Three press-pull catches 6½" apart must be manipulated together to open the door. A young child's hand is too small to span the knobs. There is also a fourth dummy knob to confuse the child. The door is hinged at the top, thus making it impossible to leave open.

The cabinet is 27" x 8" x 18" and is available through the Victoria's Aid to the Mentally Ill at a cost of \$18.50, or \$19.50 if delivered in the metropolitan area. The cabinets may be ordered through the V.A.T.M.I. at 54 Rupert Street, Collingwood. Telephone 419-2233.



## RECIPE CORNER

### INSTANT STEAMED PUDDING

Basic recipe: 1 cup S.R. flour, ½ cup sugar, 1 egg 1 oz. melted butter. Mix ingredients and add a little milk until a stiff cake consistency. Place in an uncovered greased basin and steam for half an hour.

Variations: Add to basic recipe dried fruit, lemon or orange rind, instant coffee, or take out 1 tablespoon flour and add 1 tablespoon cocoa. It is beautiful with drained tinned or stewed fruit or jam underneath.

For Guiders: This recipe works well in camp. Place pudding in an OPEN small billy and steam in a large one. Contrary to all disbelievers, it does NOT go "stodgy."



Please send contributions to Mrs. D. O. Oldfield, 4 Embling Road, Malvern, 3144.

## BLESSED ARE THEY

Girls, now that you have done your "Cents for Service," how many of you came across an elderly lady, or gentleman, who took a long time to come to the door, or had very little sight, or was handicapped in some other way; perhaps you or your patrol could help such a person.

You could arrange for one girl to call on her each week to see if some little job could be done to make life a little easier. It probably would take all the morning for her to do a little shopping, whereas you could do it in fifteen minutes. Bringing in the washing on a cold winter afternoon is not even thought of by us, but is probably a miserable job for the elderly. Bringing in the firewood is another job you could do, and threading needles and sewing on buttons is always a chore to those without good eyesight.

But remember, even if there is nothing for you to do, it will have cheered somebody up to have you call and ask. Just talking to her for a few minutes will give her something to think about and look forward to until the next week.

Blessed are they who understand  
My faltering steps and shaky hand.

Blessed are they who know my ears to-day  
Must strain to catch the things they say.

Blessed are they who seem to know  
My eyes are dim and my thoughts are slow.

Blessed are they who looked away,  
When coffee was spilled at meal to-day.

Blessed are they who, with cheery smile,  
Stop and chat for a little while.

Blessed are they who know the ways  
To bring back memories of yesterdays.

Blessed are they who make it known  
I'm loved and respected and not alone.

Blessed are they who ease the days  
On my journey home . . . in loving ways.

—Anon.



## BABY SITTING

Leaders, do your guides try baby-sitting as part of their service projects? If so, are they aware of their responsibilities while looking after other people's children.

Here are a few thoughts from a copy of a "Baby Sitting" pamphlet brought back from Canada by Mrs. Lewis, Manager of the Home Safety Council. Your guides might find these thoughts helpful.

Firstly, arrive at the house a little before the appointed time to get any necessary instructions for looking after the children and to write down the telephone number of where the parents can be reached in a hurry and of their doctor's number in case of emergency. Check with the parents their expected time of return when making the appointment, so that your own parents will know when to expect you home, and make sure that someone will see you home afterwards, too.

If you are instructed to give the children a meal, practise all home safety precautions, for example turning saucepan handles towards the back of the stove, putting matches out of reach, placing the high chair away from any hazards with the child strapped in securely, wiping up any spilt liquid or food on the floor, returning knives and scissors to a safe place after use, placing electrical cords on benches—not hanging over the edge, and putting the kettle of boiling water to the back of the bench or stove.

Never prop a bottle up for a small baby, for fear of him choking. It is safer and much more pleasant to feed him in your arms, and make sure he is well "burped" before changing him and putting him in his cot to sleep.

Do not bath the children unless instructed to do so. If this is requested, make sure the water is not too hot and never leave a child unattended in the bath. Let the telephone ring if necessary.

Try playing a quiet game with the children before bedtime, giving them ample warning of the time allowed for this, then read them a story while they settle for the night.

Once you have the children asleep, sit in a room not too far from their bedrooms and if you have the radio or television set switched on, see that it is not too loud or you will not hear them if they should wake and need you.

If one of the children should become ill suddenly, call the parents first and do not give any medicines unless instructed to do so. If he is choking, turn him upside down and slap his back. If he is hurt seriously, call the parents and the doctor.

When the parents return, report any unusual incidents or accidents without betraying the confidence of the child. If everything went well and you gained the confidence of the children, there is every chance that the parents will ask you to baby-sit for them another time.

---

## CAMP WIRRA

Peta Ware and I were lucky enough to be asked to help 6th Moorabbin Guide Company with their camp at Tynong North. This company is an extension company—we expected a lot of hard work, which we got, and a lot of enjoyment, which we also received.

Our first problem, the hardest to overcome, was the name situation. During the camp 10 girls stayed—an Anne, an Allison, a Judy, a Janet, a Jenny, a Jeannie and four Debbies. By the end of the week I think we nearly had them sorted out.

Our main task was to help Q.M., and if there was any extra time we helped with the girls. Some of the girls were more handicapped than others and had to be carried up the stairs and taken to the toilet. The thing that impressed me most was the way they kept coming up smiling. It was a true illustration of Law 7.

The Guides took an active part in the running of the camp, we had the usual patrols and most of the girls managed to peel potatoes, wash dishes, and lead colours. They were encouraged to walk through the bush, taking notice of birds, and animals, collect dead leaves and bark, then make pictures of these natural objects.

One of the highlights of the camp was the trip to Philip Island in a mini-bus to see the fairy penguins and koalas. We left soon after lunch and reached the island in time for an afternoon tea, watching the koalas. Unfortunately we could not have a barbecue tea because of a fire ban, but the penguins were

more than compensation. As you can imagine we were late back that night and all deserved the sleep-in next morning.

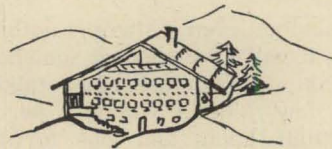
Another highlight was a trip to our next-door neighbours—the Mill Valley Ranch. We were invited to look over the ranch and the guides were impressed by the horses, wag-gons and buggies.

An even more super surprise awaited us—a tractor ride, which the leaders enjoyed more than the guides! Arthur, the boss, offered to drive us back to camp, but not before we had ridden for half an hour around Tynong.

I found this camp one of the most rewarding and fulfilling experiences of my life. It showed me another side of life and made me realise just how fortunate so many of us are.

VICKIE COLLINS

(Skylark Ranger)



A visit to "Our Chalet" in Winter is an experience never to be forgotten. After travelling by train from Zurich via Berne to Frutigen, the final part of the journey is by bus. The road climbs up towards Adelboden through banks of snow sparkling in the sunshine to a bridge—from here you must walk to the Chalet, still climbing. The last corner is turned and suddenly the Chalet appears—more beautiful than could ever be imagined—and the warmth of the welcome waiting, and the friendliness associated with life at the Chalet is indescribable.

Everyone is put into a patrol named after one of the surrounding peaks, and work is done quickly—even when there are many guests (up to one hundred at one stage). Beds and mattresses are everywhere, but the walls are flexible and the spirit of international Guiding is further extended.

Life is busy with daily excursions to a nearby ski area catering for all standards of skier. Ski lessons from the ever-exuberant but wonderfully patient staff are a good way of getting to know people and of making lasting friendships. During my stay at the Chalet there were representatives from fifteen countries besides Australia and I was

(Continued on page 267)



(Left to Right): Mrs. N. Squire (State Camping Adviser), Mrs. J. Grimwade (State Commissioner), and Miss D. Carter (Headquarters) at the Wimmera Conference.

The 20th Wimmera Region Conference was held in Dimboola and was attended by sixty Leaders from fourteen towns.

Region Commissioner Mrs. McIntosh introduced the Dimboola Shire President (Cr. W. J. McKenzie) who officially opened the conference before leaving to attend the monthly meeting of Dimboola Shire Council.

The Guide World Song and two other numbers were sung by Dimboola Ladies' Choir.

The State Commissioner, Mrs. J. Grimwade, spoke on "Guiding and the Family" stressing the importance of the Guider having the support of her family in the service she gives the community.

Senior Sergeant Booker, of Horsham, spoke on problems facing youth to-day.

Sergeant Booker said that organisations like Guiding fill a great need in the community because they guide the young people and make them into useful citizens with their interesting activities and high ideals.

A vote of thanks was given to the Dimboola Local Association for providing the meals for the day.

(From the "Dimboola Banner.")

☆ ☆ ☆

It was a Brownie Pack Holiday and Brown Owl was supervising the unpacking. One Brownie produced an umbrella from her kit—to B.O.'s amazement.

"What did you bring that for?" she asked.

Brownie looked at her in wonder and replied: "Haven't you got a mother?"

Had grand-daughter to stay. She went to fetch herself a bowl for cereals—called out, "Can I have the 'see-through' one?"

Yes—it was glass!

From "Guide Courier,"  
Western Australia.

\* \* \*

A Guide was being tested for a First Aid badge and was asked what she would do if her young sister swallowed the front door key.

Came the instant reply: "Climb in through the window."

(From the "Courier," England.)

# From the **GUIDE** **SHOP**

## ALTERATIONS TO PRICES

We very much regret having to announce still further increases in the prices of uniforms and other items.

Brownie Guide Uniform .....	to \$7.15	Page 4	Price List
Cardigan (Brown), all sizes .....	to \$6.95	Page 4	Price List
Tights (Fawn) .....	to \$1.80	Page 4	Price List
Guide Skirts (all sizes) .....	to \$6.20	Page 5	Price List
Guide Blouses (all sizes) .....	to \$6.00	Page 5	Price List
Pull-over (Guide Blue)—all sizes .....	to \$8.95	Page 5	Price List
Camp Blouse (all sizes) .....	to \$4.20	Page 5	Price List
Camp Hats (all sizes) .....	to \$3.60	Page 5	Price List
Ranger Uniform Frock and Jacket .....	to \$28.15	Page 6	Price List
Ranger Guider's Licence (Lightweight) .....	to 55c	Page 7	Price List
Combined Long Service Brooch .....	to 75c	Page 7	Price List
Pack Holiday Badge .....	to 60c	Page 7	Price List
Unit Information Sheet .....	to 5c	Page 8	Price List
Pack Holiday Forms .....	to 5c	Page 8	Price List
Flags of the United Nations .....	to 80c	Page 8	Price List
Ash Road .....	to 75c	Page 10	Price List
Dawn of Time .....	to \$3.50	Page 10	Price List
Dream Time .....	to \$3.50	Page 10	Price List
The First Sunrise .....	to \$3.50	Page 10	Price List
The Guide Through Girlhood .....	to 60c	Page 13	Price List
The Guide Through Teen Years .....	to 60c	Page 13	Price List
Children No Longer .....	to 60c	Page 13	Price List
A Field Guide to Australian Trees .....	to \$5.95	Page 13	Price List
A Field Guide to Australian Wildflowers .....	to \$5.95	Page 13	Price List
St. John's Ambulance Australian First Aid Manual .....	to \$1.70	Page 13	Price List
Flag Card Game .....	to 8c	Page 15	Price List
Children's Party Games .....	to 70c	Page 15	Price List
Ground Sheet, 7' x 3' .....	to \$4.15	Page 17	Price List
Hike Ground Sheet .....	to 45c	Page 17	Price List
Sonata Superior Acrylic Sleeping Bags .....	to \$14.20	Page 17	Price List
Lifelines (20 yds.) .....	to \$2.70	Page 17	Price List
Sleeping Bag Sheets .....	to \$2.40	Page 17	Price List
Teaspoon, Victorian Souvenir with Pink Heath .....	to \$1.20	Page 18	Price List
Toadstools .....	to \$11.35	Page 19	Price List
Wash-'n'-Dry .....	to 50c	Page 19	Price List

## NEW BOOKS

### Instant Series

Ways with Dried Flowers .....	35 cents	Australian Aboriginal Words (3,000 examples and their meanings) .....	40 cents
China Painting .....	35 cents	The Aboriginal Story by Ruth C. Williams .....	\$1.25
Guide to Weaving .....	35 cents	Activities for Patrols (Little Scout Series) .....	30 cents
Children's Parties .....	25 cents	Revised Guide Handbook Part 2 .....	20 cents
1974 Australian Stamp Catalogue .....	35 cents	How to Use the Australian Guide Badges (for Commissioners, Guiders and Testers) .....	10 cents
Cub Scout Games (many suitable for Brownies) .....	\$1.65	The Australian Newsletter (Keeping Track) .....	8 cents
Bless This Mess and Other Prayers (by the authors of Too Busy Not to Pray, Jo Carr and Imogene Sorley) .....	\$2.50	Asia-Pacific Newsletter .....	10 cents
The Professor and The Possum (A Plea for Preservation) .....	\$1.95	World Bureau Newsletter .....	5 cents



# INDIVIDUAL BOOKING

TO : MELBOURNE SPORTS DEPOT, 121 ELIZABETH STREET, MELBOURNE, 3000, PHONE 60 1911

PLEASE SEND THE FOLLOWING TICKETS :

	STALLS		BACK STALLS		LOUNGE	
FRIDAY, 6 EVENING	\$2.30		\$1.80		\$2.50	
SATURDAY, 7 MATINEE	\$1.50		\$1.20		\$1.70	
SATURDAY, 7 EVENING	\$2.30		\$1.80		\$2.50	
WEDNESDAY, 11 EVENING	\$2.30		\$1.80		\$2.50	
THURSDAY, 12 EVENING	\$2.30		\$1.80		\$2.50	
FRIDAY, 13 EVENING	\$2.50		\$2.00		\$3.00	
SATURDAY, 14 MATINEE	\$1.70		\$1.40		\$1.90	
SATURDAY, 14 EVENING	\$3.00		\$2.50		\$4.00	

If seats are not available as requested above, alternative dates are :.....

Note : Please enclose a stamped, self-addressed envelope. Cheques payable to M.S.D. No returns accepted.  
Children under 8 years half price. Evening performances at 8 p.m. Matinees at 2 p.m.

NAME : .....

ADDRESS : .....

TEL. No. : ..... SCOUT GROUP ..... TOTAL AMOUNT ENCLOSED : \$ .....  
OR GUIDING UNIT

**INDIVIDUAL BOOKINGS BY MAIL NOW  
PERSONAL BOOKINGS AT M.S.D. FROM JULY 25  
FOR BLOCK BOOKINGS SEE OVER**

# BLOCK BOOKING

TO : MELBOURNE SPORTS DEPOT, 121 ELIZABETH STREET, MELBOURNE, 3000, PHONE 60 1911

PLEASE SEND THE FOLLOWING NUMBER OF BLOCKS (10 TICKETS IN EACH BLOCK) :

	STALLS		BACK STALLS		DRESS CIRCLE		UPPER CIRCLE	
FRIDAY, 6 EVENING	\$17.00		\$13.00		\$13.00		\$10.00	
SATURDAY, 7 MATINEE	\$15.00		\$11.00		\$11.00		\$8.00	
SATURDAY, 7 EVENING	\$17.00		\$13.00		\$13.00		\$10.00	
WEDNESDAY, 11 EVENING	\$17.00		\$13.00		\$13.00		\$10.00	
THURSDAY, 12 EVENING	\$17.00		\$13.00		\$13.00		\$10.00	
FRIDAY, 13 EVENING	\$19.00		\$16.00		\$16.00		\$12.00	
SATURDAY, 14 MATINEE	\$16.00		\$13.00		\$13.00		\$10.00	
SATURDAY, 14 EVENING			\$16.00		\$16.00		\$12.00	

If seats are not available as requested above, alternative dates are : .....

Note : Please enclose a stamped, self-addressed envelope. Cheques payable to M.S.D. No returns accepted.  
Evening performances at 8 p.m. Matinees at 2 p.m. Please keep block tickets together for theatre ushers.

NAME : .....

ADDRESS : .....

TEL. No. : ..... SCOUT GROUP ..... TOTAL AMOUNT ENCLOSED : \$ .....

OR GUIDING UNIT

**BLOCK BOOKINGS BY MAIL NOW**  
**PERSONAL BLOCK BOOKINGS FROM M.S.D., SCOUT SHOPS AND THE GUIDE OFFICE FROM JULY 25**  
**FOR INDIVIDUAL BOOKINGS SEE OVER**

---

---

# Victorian Newsletter

---

---

JUNE, 1974

Dear Everyone,

This month began with the Australian Executive meeting in Sydney. As we have only two meetings this year, it was a particularly busy time. I flew over early on the Monday and had a most enjoyable luncheon with an old school friend — soaking up the sun overlooking Sydney Harbour.

At this meeting the following Australian Appointments were made for five years, as from October, 1974 —

Section Director — Mrs. H. J. Gardner, Queensland.

Brownie Section Adviser — Mrs. N. Falloon, Victoria.

Guide Section Adviser — Miss D. Langdon, Queensland.

Ranger Section Adviser — Miss M. Callister, Victoria.

Member Australian Awards Committee — Mrs. C. Osbourn Shave.

Member Australian Conservation Committee — Mrs. J. Wood.

Australian Post Box Secretary — Mrs. C. H. Williamson.

Australian Archivist — Miss M. Deer.

Miss Helen Goodes, Victoria, was appointed N.Y.C.A. Australian Delegate for the next two years.

Our best wishes go to all these for a happy term.

The Australian Government Grant Budget for 1974 was confirmed, and it is wonderful to see that we now have National Development projects for Aborigines in Western Australia, Mining Areas in Queensland, Urban Areas in Queensland and Victoria, and development in Tasmania and Northern Territory. Leadership Training is also helped by this Grant, as is International.

We discussed the Australian Assembly to be held in 1975, and also Australia's offer to hostess the 23rd World Conference in 1978. Miss Enid Bunning, who is Chairman of the Australian Planning Committee for the Australian Association Assembly and the Liaison with the Australian Tourist Commission, came to Sydney to discuss these with us.

It was approved that there should be a Brooch for 25 years and 35 years Combined Long Service, and that the service of Unit Helper should be included when the total period of service for this badge is being calculated.

The question of whether we should have special good service awards for adults was raised, and it was decided that this should be discussed at the Australian Assembly next year. If any of you have thoughts on this subject I would like to hear them before next year.

Papua New Guinea, which has been part of Australian Guiding for many years, has requested that a link be formed with the World Committee direct, so negotiations could commence for acceptance as an Associate and finally Full Member of the World Association, as Papua New Guinea obtains Independence on 1st December, 1974. Mrs. Moaitz, Territory Commissioner, expressed the thanks of her country for the help Australia has given them.

At the conclusion of Tuesday's meeting, Miss Jill Johnstone was presented with the Red Kangaroo, and at the conclusion of Wednesday's meeting, Miss

Lambie thanked the Australian Sections Personnel for their work over the past five years.

I spent a very happy day with members of the Barree Region at their Conference in Myrtleford. Mrs. Turnbull and Miss Carter were also there from Headquarters. Their theme was This Changing World, which seemed very appropriate.

I was given a delightful welcome by the 1st Olympic Village Brownie Pack at their weekly meeting, and greatly enjoyed joining in their activities and getting to know them.

I was delighted to meet Miss Joy Carter, New Zealand Training Adviser, on her way through Victoria. Joy has been studying training methods overseas prior to taking up her appointment, and we were most interested to talk with her.

The day school broke up saw me dashing from one end of Melbourne to the other, collecting the children and their baggage and taking them all to the dentist. Fred took them home and I returned after the Executive meeting.

Now the school holidays are over we are seeing some of our first sunny days for weeks. It was wonderful having everyone home even if they did eat me out of house and home.

We were marooned for a day by the floods—it was the worst we have seen at Glenaroua; but we were very lucky—we lost a dam, crossings and a lot of fencing, but there was no loss of stock or buildings. Our thoughts were with all those who suffered during the floods, and I have the greatest admiration for the wonderful way in which everyone worked to help people and to save towns from flooding. I am sure that many members of our Guide family gave great service over this disastrous time, and to you all I say Thank You. No doubt there will be some Guide families who would benefit from financial assistance following flood damage, and we will be pleased to receive donations to pass on to them.

The whole family went to South Australia for five days—it was very much a whirlwind tour—taking in cattle studs, the Barossa Valley and a quick glimpse of Adelaide. It was good to all be away together and to see a part of Australia we didn't know.

I hope you are all looking forward to the activities of second term.

With love and best wishes,

JOAN E. GRIMWADE,

State Commissioner.

## ITEMS OF SPECIAL INTEREST TO GUIDERS

### THE SPANNING SEMINAR, 1974

A REMINDER to all Guiders —  
Keep Saturday, 12th October free  
and come and join us from 9 a.m. - 5 p.m.  
at Melbourne University. Application  
forms will be distributed shortly.

### YOUNG LEADERS' SEMINAR — Queensland — August, 1974

Three places are still available for Guiders between the ages of 18-25 years to attend "Kanyana", a seminar to be held at "Kindilan", Queensland's Training Centre at Redland Bay, 23 miles from Brisbane. The name "Kanyana" means "People assembled" and this event promises to be most stimulating and enjoyable. The dates? **17th - 23rd August**, with one week's hospitality by the Queensland Guide Association, if desired. Camp fee — \$35, plus fares.

Applications, forms for which are available on receipt of a stamped, self-addressed envelope, should reach the Secretary to Advisers **by 19th June**. **All applicants will be required to attend at Headquarters (in uniform please) on Saturday, 22nd June, at 1.30 p.m., for selection.**

### YOUNG LEADERS' GROUP

It gives us great pleasure to invite Young Leaders to join us and make the second half of 1974 a lead-up to a bigger and brighter Social Year in 1975. Our next meeting will be —

**22nd July**, at 8.00 p.m., at 6/23 Charles Street, East Bentleigh (579 2467).

**And note in your diaries our next Social Event —**

**Friday, 2nd August — a Theatre Night** with supper to follow.

It is hoped that Young Leaders from the Scout Movement will be able to join us. **But don't forget your husbands, boyfriends and all other friends — they're invited too.** For further details contact Judy Pretty (89 9637) or Fiona Constable (89 8476).

### AUSTRALIAN LINK-UP, 1974

**Leaders Wanted.** — A number of Guiders will be required to staff for our own Victorian Train Trek which will take place 26th - 29th August. Please make it possible for us to send your Guides to this event — **Go With Them!**

## SHOP NEWS

The revised Guide Handbook Part 2 (20 cents) and the new booklet "How to use the Australian Guide Badges" (10 cents) are now available.

To help Guide Guiders and to save any confusion which might occur during the change-over period, i.e., while alternative designs may be issued for some badges, **all Guide Interest badges** will be issued from the Guide Shop at Headquarters. The Geelong and Ballarat Equipment Depots are not now holding any **Guide Interest badges**. There will be a notification in "Shop News" when Guide Interest badges will again be available from the Depots.

Commissioners and Guiders are reminded of the necessity for parents and friends to have a signed authority for the purchase of Brownie Guide Promise badges, Guide Promise badges and World badges. It is most frustrating to these persons, who may have made a special trip to the city, to find they cannot obtain these badges without a signed authority.

## ITEMS OF SPECIAL INTEREST TO TREFOIL GUILDS

The Fellowship of Former Scouts and the Trefoil Guild of Sri Lanka has great pleasure in inviting the I.F.O.F.S.A.G. (International Fellowship of Former Scouts and Guides) members in Australia to attend the 1st Asian Regional Meeting in Colombo, from 26th - 29th July, 1974. This meeting is organised chiefly to promote closer Fellowship and mutual understanding.

The programme commences on Friday, 26th July, when the participants will meet for the evening meal, and will conclude on Sunday, 28th, with the foreign participants leaving Monday, 29th, for a tour to Kandy (hill country). Contact our State Trefoil Guild Adviser, Mrs. E. Lister, 440 South Road, Moorabbin, 3189 — 95 1835 — for further details.

\* \* \*

**Commissioners, please do not forget to advise Headquarters of all changes relative to the Leaders of the Units in your Districts.**

## TRAINING CALENDAR SUPPLEMENT

(To be read in conjunction with Training Calendar in "Matilda")

### Stage 1 — South Metropolitan

Please note that the dates of this course being held during the evening at Bentleigh has been changed to 14th/15th September and 19th/20th October, from 10 a.m. - 4 p.m.

### Stage 1 — East Metropolitan Region

Tuesdays — 9th/16th/30th July; 6th/13th August (outdoor day).

Times — 10 a.m. - 3 p.m. Note: Please bring lunch.

Location — Presbyterian Church, Deepdene.

Applications and \$1.50 fee to Mrs. F. Ludbrook, 5 Curnola Avenue, Doncaster, 3108, by 26th June.

### Stage 1 — Woorayl Region

Weekend — 3rd/4th August and 14th/15th September.

Times — 10 a.m. - 4 p.m.

Location — Leongatha.

Applications and \$1.50 fee to Mrs. R. Gaudion, 32 Blackmore Avenue, Leongatha, 3953, by 19th July.

### Stage 1 — Sunraysia Region

Weekend — 20th/21st July and 21st/22nd September.

Times — 10 a.m. - 4 p.m.

Location — Mildura.

Applications and \$1.50 fee to Mrs. R. Hocking, 812 14th Street, Mildura, 3500, by 6th July.

### Stage 1 — Otway Region

Evenings — 22nd/23rd/24th/25th and 26th July.

Times — 6 p.m. - 10 p.m. each evening.

Location — Warrnambool.

Applications and \$1.50 fee to Mrs. W. D. Macdonald, 5 Scott Street, Cobden, 3266, by 8th July.

### Stage 2 — North Metropolitan Region

Thursdays — 1st/8th/15th/22nd August; 12th September.

Times — 10 a.m. - 3 p.m.

Location — Guide Hall, Cromwell Street, Glenroy.

Applications and \$1.50 fee to Training Department, 20 Russell Street, Melbourne, 3000, by 19th July.

### Campfire Club

July 11th, August 8th — At Headquarters, from 8 p.m. to 9.30 p.m.

**COMMISSIONER/GUIDER UNIFORMS**

as at 1st May, 1974

Please make necessary alterations in Price List—  
Page 6.

Jacket and Straight Skirt, 32"-42" .....	\$32.00
Jacket and Gored Skirt, 32"-42" .....	\$31.00
Gored Skirt, 24"-34" .....	\$10.50
Blouse, 32"-44" .....	\$5.55
Bow Tie (Guide Blue or Brown) .....	60 cents
Commissioner Beret, 21½"-23½" .....	\$7.30
Guider Beret, 20½"-23½" .....	\$5.75
Blue Summer Frock, 32"-38" .....	\$17.00
Blue Summer Frock, 40"-44" .....	\$18.00
Blue Summer Hat, 21"-24" .....	\$6.75
Shoulder Bag (Blue, Brown or Black) ..	\$7.10
Cardigan, 32"-42" ..	\$9.70
Half Slips, XSSW-W .....	\$1.50
Raincoats (Nylon Guide Blue)—	
SSW only, Bramac .....	\$10.50
XSSW-W, Dri-Clad .....	\$8.50
Slacks, SSW-XW .....	\$9.20

**Paper Patterns**

Jacket and Straight Skirt .....	\$1.55
Blouse and Gored Skirt .....	\$1.15
Summer Frock .....	\$1.15
Blouse Material, 45", per yd. ....	\$1.50
Skirt Material, 58" (wool and terylene), per yd. ....	\$5.80
Summer Frock, 42", per yd. ....	\$3.00

**OUR CHALET** (continued from page 264)

constantly amazed at the linguistic versatility—fluency in three or four languages seemed quite common.

The Winter programme is geared towards ski-ing, but for those wishing other forms of relaxation there are many beautiful walks including those to the Engstligenalp glacier, to nearby villages and to a local wood-carver. There is always something to do at the Chalet, too, or else at the village of Adelboden, about twenty minutes' walk from the Chalet.

Evening programmes are frequently arranged by groups staying at the Chalet and we were entertained by Swiss, Americans, Finns, French, Danes, English and Norwegians—learning something about the countries and their peoples.

Time passes too quickly and everyone is sad when it is time to leave, but comfort is gained by planning the next visit to meet old friends and to make new ones. There is something very special about Our Chalet.

—Chris. Reiher, North Balwyn.



Flag of Papua/New Guinea.

**CONGRATULATIONS to the recipients of the following:**

Guiders' Long Service (15 years):

Mrs. E. Davey  
Mrs. G. Austin

Local Association Long Service:

Mrs. A. Douglas, Ashburton.  
Mrs. M. Aldersea, Dandenong.  
Mrs. S. Thomson, Williamstown.

☆ ☆ ☆

Thanks Badge:

Mrs. M. Becke, Special Activities Committee.  
Mrs. K. W. Wood, Anglesea.

**APPOINTMENTS AND WARRANTS**

A warm welcome is extended to the following:—

**REGION COMMISSIONERS:**

Mrs. G. Nikoliev, West Metropolitan; Mrs. D. R. Gilmour, Western Border.

**DIVISION COMMISSIONERS:**

Mrs. J. L. Hardie, Camberwell North; Mrs. R. S. Stuart, Blue Dandenongs; Mrs. D. McK. Jacka, Waverley; Mrs. G. J. Muller, Moorabool; Mrs. G. Kenneally, South Western.

**DISTRICT COMMISSIONERS:**

Mrs. F. R. Barnett, Deepdene; Mrs. S. R. Hurse, Carisbrook; Mrs. D. E. Ginn, Irymple; Mrs. M. H. McKinnon, Wentworth; Mrs. M. F. Leah, Manangatang; Mrs. G. M. Cashmore, St. Kilda; Mrs. J. McRae, Mortlake; Mrs. H. C. Lee-Archer, Mentone/Parkdale; Mrs. A. W. Gray, Chiltern; Mrs. R. M. Blennerhassett, Cardross; Mrs. H. J. Lardner, Dingley; Mrs. R. S. Looney, Nyah; Mrs. C. E. Dobson, Syndal North; Mrs. L. D. Elms, Assistant, Heatherdale.

**RANGER GUIDERS:**

Mrs. M. Goode, 1st Vict. Lone Rangers.

**GUIDE GUIDERS:**

Miss L. Menzies, 1st Essendon; Mrs. J. Ross, 1st Dromana; Mrs. L. A. Wright, 2nd Portland; Mrs. M. Modok, 1st Ashburton; Mrs. B. Planner, 1st Nathalia; Mrs. W. Gardner, 1st Greenhills; Mrs. J. Bartlett, 1st Greensborough; Mrs. I. Marshall, 2nd Fawkner; Mrs. E. Lambert, 3rd Bentleigh; Mrs. K. R. Mollison, 2nd Glen Waverley; Miss B. Burch, 1st Heidelberg; Miss R. L. Walker, 1st Koroit; Miss M. Littlehales, 12th Ballarat; Miss Z. J. Martin, 1st Wattle Park.

**ASSISTANT GUIDE GUIDERS:**

Mrs. B. Rogerson, 2nd Simpson; Mrs. V. Galway, 1st Doncaster; Mrs. G. C. Dorr, 1st Cheltenham; Miss M. Low, 1st Ashburton; Mrs. B. Fox, 1st Parkmore; Miss P. M. Kiely, 1st Albert Park; Mrs. R. E. Piper, 2nd Altona; Mrs. K. Graham, 2nd Boronia.

**BROWNIE GUIDERS:**

Miss D. E. Cook, 1st Ashburton; Miss D. L. Palmer, 3rd Dandenong; Mrs. B. R. Potger, 1st Hazelwood; Mrs. D. E. Monk, 2nd Swan Hill; Miss D. L. Taylor, 1st Belgrave; Mrs. W. R. Cromb, 1st Bairnsdale; Miss A. Warren, 2nd Sth. Oakleigh; Mrs. V. Wood, 1st Springvale; Mrs. J. Dowie, 1st Doncaster.

**ASSISTANT BROWNIE GUIDERS:**

Miss J. Wallace, 1st Dandenong; Mrs. C. M. Birt, 1st Templestowe; Miss S. M. Neal, 1st Templestowe; Miss J. A. Wilson, 1st Leitchville; Mrs. D. P. Hughes, 2nd Keysborough; Miss G. Wilcox, 2nd Sth. Oakleigh; Miss K. L. Jones, 2nd East Bendigo.

**RETIREMENTS AND RESIGNATIONS**

We acknowledge with gratitude the services given by the following whose Warrants have been returned:—

**DIVISION COMMISSIONERS:**

Mrs. N. H. Vale, Gippsland; Mrs. L. Virgo, Tambo Valley; Mrs. D. Nash, Moorabool; Mrs. M. C. Candy, South Western.

**DISTRICT COMMISSIONERS:**

Mrs. G. G. Shepherd, Creswick; Mrs. I. Cattanch, Cardross; Mrs. U. Lyons, Irymple; Mrs. S. R. Mead, Underbool; Mrs. C. M. Scarborough, Wonthaggi; Mrs. C. N. Law, Yanakie; Mrs. F. H. S. Quiggin, Maffra; Mrs. F. H. Elston; Mentone/Parkdale; Mrs. D. Cooper, Yarra Junction; Mrs. B. Davies, Assistant, Heatherdale; Mrs. B. L. Templeton, Broadmeadows West.

**GUIDE GUIDERS:**

Mrs. M. Avent, 1st Essendon; Miss J. Mills, 2nd Essendon; Mrs. P. Hutchison, 1st Epsom; Mrs. MacDowell, 1st Springvale.

**ASSISTANT GUIDE GUIDERS:**

Mrs. F. Rogers, 1st Rosebud; Miss D. Tori, 1st Daylesford; Miss M. Prime, 2nd Bennettswood; Mrs. D. R. Irwin, 1st Wonga Park, Mrs. G. W. Oliver, 4th Traralgon; Mrs. J. Ross, 1st Dromana.

**BROWNIE GUIDERS:**

Mrs. H. Rogers, 2nd Rosebud; Miss C. Knight, 4th Cheltenham; Mrs. K. W. Lewis, 1st Crowlands; Mrs. R. J. Weston, 1st Kyneton; Mrs. R. W. Asker, 2nd Bennettswood; Mrs. P. Tieman, 1st East Bendigo; Miss C. A. Truscott, 1st Yanakie; Mrs. G. Parker, 4th Mt. Waverley; Mrs. J. A. Connor, 3rd Mt. Waverley.

**ASSISTANT BROWNIE GUIDERS**

Mrs. J. L. Jacobson, 5th Mt. Waverley; Mrs. W. J. Schuback, 3rd Mt. Waverley; Mrs. G. G. Giles, 3rd Bennettswood; Mrs. N. I. Mann, 4th Glen Waverley; Mrs. G. Baulch, 1st Sth. Croydon; Mrs. P. C. McLaren, 1st Wattle Park; Mrs. D. E. Monk, 2nd Swan Hill.

---

**FOR SALE.** — Commissioner's Uniform. Jacket. 38 in. bust; skirt, 30 in. waist; hat, 23 in. Also Summer Dress. All good condition. Half shop price. Mrs. P. R. Gavens, 13 Amundsen Street, Belmont, 3216.