

# MATILDA

GIRL GUIDES ASSOCIATION, VICTORIA

MARCH  
1976

VOLUME 53

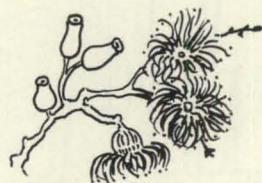
NUMBER, 8

# FANTASTIC...EXCITING...

... Camp Uralba surely was the most exciting camp I have ever been to. It was a chance to get to know other guides, many from remote parts of Victoria ...

What a fantastic time we all had. I wish I could tell you all the exciting things that happened, but it would take too many pages. I met so many nice people and learned such a lot. Although I will be too old to attend the next state camp as a guide, I do hope that it will be as great a success as Camp Uralba. Thank you to all concerned.

MANDY CHAPMAN,  
Crosbie Morrison Camp.



Fun ... friendship ... new experiences ... at Britannia Park ... in Summertime ... Read guides', leaders' and organisers' reports on pages 165-169.

Camp photographs by courtesy of B. De Marchi and G. Thomopoulos.

## In this issue . . . .

	Page
Asia-Pacific News ... ..	181
Australian Evaluation of Eight Point Program ... ..	171
Camper Van ... ..	183
Camp Uralba ... ..	165-169
Conservation ... ..	177
"Get Moving" Ideas ... ..	181
Irene Fairbairn Fund — Badge ... ..	170
Local Association Section ... ..	178
Lost Property — Camp Uralba ... ..	172
News from Units ... ..	179, 180
Notices ... ..	170, 176, 177, 182
Personnel Changes, etc. ... ..	186
Reporting from Russell Street ... ..	164
Service Flash ... ..	169
Shop News ... ..	184
State Commissioner's Letter ... ..	163
Subscription Form ... ..	185
Training Calendar ... ..	187
Training Pages ... ..	173-176
Trefoil Guild News ... ..	185

# MATILDA

PUBLISHED BY THE GIRL GUIDES ASSOCIATION OF VICTORIA  
20 RUSSELL STREET, MELBOURNE, VICTORIA, AUSTRALIA, 3000

State Commissioner: MRS. F. S. GRIMWADE •

State Secretary: MISS M. W. BARR

Assistant State Commissioners: MRS. D. O. OLDFIELD •

MRS. A. J. TURNBULL

Editor: MRS. L. I. RICHARDSON, 31 Hampshire Road, Forest Hill, 3131



## From our State Commissioner

"Guiding is Relaxation" is the message which I put on the back of my office door at the beginning of the December School Holidays in 1974. After the organisation of returning Martin and Ann to school — the latter with about fifteen pieces of luggage, I must admit I felt exactly the same way. It is rather pleasant having Rick home alone until University starts, and he is being worked very hard on the property.

I hope that all Guiders feel that Guiding is relaxation — be it from the day to day responsibilities of a wife and mother or from the routine activities of the business woman. Whilst Guiders are putting a great deal of energy into helping our girls and giving them all the wonderful things Guiding has to offer, they are receiving in return fun, stimulation and relaxation. Perhaps this is one aspect of Guiding that we do not always emphasise sufficiently when seeking leaders.

We were delighted to have our Assistant State Secretary, Miss Heather Cathcart, join the staff in February. Heather will be remembered by many as former Assistant Ranger Adviser. We hope Heather will be very happy in her new position and I know she will ease the burden carried by Miss Barr and Miss Carter.

We have recently had our first meetings for the year, and it has been wonderful to see everyone again. We had met briefly at "Camp Uralba" where Lysbeth Turnbull as Q.M. in Guide House looked after us magnificently, but it was good to get back to the routine of the Weekly Meetings. Our rather bare diaries rapidly filled and Jean and Lysbeth will be particularly busy attending Region Conferences in middle term, when I anticipate being overseas with Fred.

At our Advisers Meeting we welcomed Miss Yvonne James who took over as Guide Adviser on 1st January. We wish you a happy term of office, Yvonne. We all thank Dot Halligan for the wonderful way she looked after the Guide Section during her term of office and know she will continue to be very active in those many fields of Guiding in which she is involved.

The highlights of the Advisers Meeting were the reports from the Look at Leadership and Sections' Conference held in Sydney in January. As I listened I could not help but have a great feeling of excitement and eager anticipation at the thought of the year ahead. I predict that 1976 will be a most exciting year for Guiding in Australia.

Guiding should always be exciting, of course. If our program is full of adventure and excitement then Brownies cannot wait to go onto Guides and Guides look forward to moving onto the wider and more varied program to be found in the Ranger Unit.

This year we are trying to promote the Ranger Section, a section that is really exciting as I am sure would be verified by Essendon Rangers who have just returned from a wonderful trip to India, where they stayed at Sangam. I hope all those of you who were Rangers in your youth are coming to the Ranger Reunion to be held at Headquarters on 20th March.

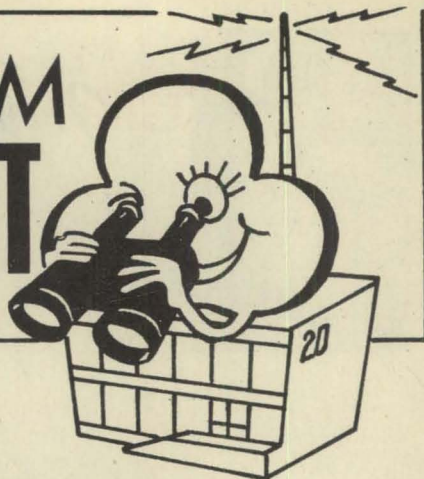
I hope you all continue to find relaxation and excitement in your Guiding throughout the year.

With love and best wishes,

Joan E. Grimwade



# REPORTING FROM RUSSELL STREET



## AN EXCITING ANNOUNCEMENT

The following **new publications** are now on sale in the Guide Shop:—

Australian Brownie Guide Book	.....	\$1.60
My Brownie Guide Mini Book (for Recruits)	.....	10c
Australian Guide Handbook Part 1	.....	\$1.60

Please note that the Brownie Guide Interest Badges Booklet (15 cents) and the Guide Handbook Part 2 (20 cents) should now be ordered separately from the Handbooks.

## FLOOD RELIEF

Many of you will have given thought to the unfortunate people in N.S.W. and Queensland who have been inundated by flood waters this summer. If you would like to offer tangible help to any Guide families who have suffered, please send your donations to us — we will be happy to pass them on.

## STATE INTERNATIONAL ADVISER

If you have been trying to telephone Mrs. Lesley Dwyer without success, it may be because her telephone number has been altered. Please alter your Guiding Personnel to show correct one, which is 509 4171. Lesley will remain in office as our State International Adviser until 1st August, 1976.

## PERSONNEL CHANGES

This is a time of year when a number of leader changes take effect. Please be sure to send to Headquarters (not to the Editor), the name, address, post code and unit name of new leaders so that records can be kept up to date and "Matilda" can be sent to the right person at the right time.

## DATE CHANGE

The Ranger Guiders' Conference is to be held on 17th July, not as shown on the list of dates presented in "Matilda" in February.

## LONG SERVICE AWARDS

The period of service required to be eligible for Guider, Local Association, Trefoil Guild or Combined Long Service Awards has been altered to 10, 20 and 30 years, from the former 15, 25 and 30 years. Applications (special forms available) can be made either by the prospective recipient or by the Commissioner, Local Association Secretary or Trefoil Guild Recorder acting on her behalf.

## A PLEA FROM THE CAMPING DEPARTMENT Equipment Maintenance at Britannia Park

There are five equipment sheds at Britannia Park, and each needs a District, Division or Region to give it "tender, loving care". For one year??? May to May??? Can **you** help??? Enquiries to Secretary to Advisers at Headquarters.

## FROM THE UNIFORM SUB-COMMITTEE

There seems to be some confusion about the wearing of belts with the Guiders' blue summer dress. The fact that keepers have been omitted from dresses made recently does not mean the dresses are to be worn without belts — they are omitted to allow for varying waistlengths. The belt is part of the summer uniform and should be worn at all times.

## APPLICATIONS FOR GRANTS FROM DEPARTMENT OF YOUTH, SPORT AND RECREATION

The closing date for applications for Government Grants for the financial year 1976-77 has now been advised and is Friday, 23rd April. Building Grant applications (for \$1 for \$1 subsidy) may be submitted at any time. Application forms for both types of grants are now obtainable from the Department's Offices at 570 Bourke Street, Melbourne.



# Camp Uralba

## Home Between the Hills

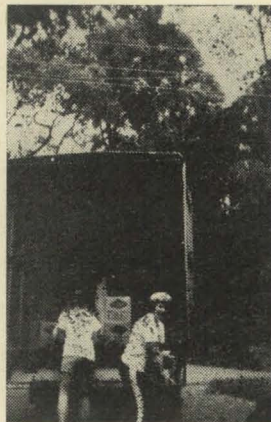
Have you ever planned a holiday away for your family of 5 to 6? Multiply this by about 200 and you will discover what it entailed to plan Camp Uralba. As your family needed to be fed, so did our 1104; as your family needed accommodation so we needed tents and equipment for our campers; as you had to make provision for entertainment so we had to have a challenging and adventurous program — so it went on, transport, camp shop, first aid centre, canteen etc.

In February, 1975, a committee was formed of people responsible for each of these departments. Basic matters were discussed at monthly meetings, taken back to department meetings for enlargement and detailed planning, results being tabled at the next meeting for approval or amendment. (Head-quarters' walls could tell many stories of our meetings of pleasure, dismay, wonder, frustration, alarm, delight and panic, but all usually ending in gay laughter and successful conclusion.)

A budget had to be set — estimating cost of food, transport etc. nine months ahead! — after hours of calculations a fee was set, with fervent hopes. Camp name and theme had to be chosen, camp badge and scarf planned and manufactured, menu set and quantities worked out, activities planned, challenges set — these last two being organised into a program (including a swim every day for each of the 25 camps), equipment counted, checked, mended, arrangements for borrowing and transporting additional sets from Melbourne — all this done with pleasure.

As the months sped by, the tempo quickened — were the badges ready, had all the woggle blanks (1120 of them!) been hand cut, had the 4,500 odd beads been checked and counted, could the new bakery cope with our additional bread order, would we finally be able to get bulk groceries delivered, were there enough ridges and uprights, were all stoves and coppers fire proof? Then as the eleventh hour neared,

the ship carrying our long awaited scarf material arrived in Melbourne — phew! — but just before Christmas could we obtain 420 lemons!? Yes, of course, but how many kind friends' lemon trees are now bare is an unanswered question.



On the night of 3rd January it started — the equipment team went into camp. Next morning dawned clear and hot — total fire ban day, 42 degrees and the EMU's (equipment maintenance unit) toiled on. That night we were joined by the Q.M. team "Nelly's Weight watchers", minus their leader who had injured her back. How would they cope — as Guide people always do in an emergency — very well, but they welcomed "Nelly's" appearance two days later. 5th January saw frenzied work by EMU's and Weight watchers and by 2 p.m. our family had grown to nearly 120 with the arrival of G.I.C.'s, Q.M.'s and Central Staff. Tea was provided centrally at Guide House by our efficient teams of House and Cottage Q.M. staff — a monster meal for 120. Then our first meeting all together — so much to say, explain, ask etc.

The 6th dawned fine and clear, all was calm though tense at Britannia Park. Olympic Park (bus terminal) I believe looked like an ant's nest. Anticipation! — the first bus arrived and through the gate they came — all in order exactly as planned — bravo! for the transport people.

It was wonderful to watch the camp appear — after all our months of planning it was actually happening.

The opening ceremony, held in the cool of the evening as part of our campfire, proved simple, symbolic of the camp and impressive, particularly as it was carried out by our State Commissioner, Mrs. Grimwade, who we were thrilled to have with us for an overnight stay.

Being ever mindful of our summer hazards, detailed plans had to be made for emergency evacuation. Plans were laid, everyone instructed, Mr. Stevens the local Forestry Officer invited for breakfast. In the middle of breakfast the Police Siren sounded! Everyone had to depart by the specified route to Lock's property with a woollen blanket and woollen jumper. We did it in seven minutes — we were thrilled, Mr. Stevens was impressed — 1104 is a large number to move so quickly and so orderly.

So the days progressed — swimming, pioneering, hiking, challenges — following nature trails, making a wind vane, "from where do the guides in your camp come?", who can send semaphore etc. etc. Our program people, "Nobby's Nuts", ensured that the days were full of fun and adventure, and best of all, making new friends.

"The Silver Gum Nut award" (for the camp with the best assessed gateway) entailed much planning, discussing, preparation and erection and a very close finish generously accepted by all participants. The "Blurb", our daily camp newspaper, kept us abreast of camp gossip, news and notices, while Melbourne newspapers gave the camp excellent publicity throughout the state.

No good camper camps without rain — the fall on Thursday afternoon however, did no more than lay the dust, cool the air and send everyone to bed after baths or showers, for a much needed early night.

Visitors day was fine and mild — the police counted to 840 cars and then gave up — we were well visited and viewed — but what a crowd to watch our afternoon display! Our special visitors, Mrs. Grimwade, Miss Barr who led our campfires, Miss Carter from Headquarters and Miss James, our new Guide Adviser, came during the camp and saw us at less hectic moments.

The camp sped by — fun, laughter, friendship, happiness — so very warming and thrilling to walk around the camps — our months of work had indeed been a labour of love if this was what they had produced.

And so the last night — final campfire and again we were thrilled to have Mrs. Grimwade with us to share this special moment. Firstly a riotous line-up of all central teams receiving their due reward of applause and then the simple, impressive and very emotional closing ceremony. There were many wet eyes and lumps in throats (not only among the Guides) as campers wended their way back to camp for final supper and bed — it meant so much to us all.

We struck camp on the 13th and 2 p.m. saw frantic scurryings as buses came and damp canvas still stood. 2.30 p.m. — majority had gone on the buses, central staff and G.I.C.'s and Q.M.'s left before tea and so all that remained was clean up and final sorting of gear by EMU's.

So in eight short days after eleven months planning the camp was over. Had it been successful?

The planning committee had achieved its aim and felt well satisfied — but the guides gave the real answer — from the obvious fun, happiness and friendship which was the prevailing atmosphere of the camp, it had been a successful camp.

Maybe the words of our camp song sum it up —

Uralba, Home in the hills,  
Music of song birds, scenery that thrills  
Camping fun out of doors  
Blending with nature, living our Laws.

Come now, greet a new day  
Making new friendships, at work and at play  
Working as it was planned

Using our knowledge and God-given hands.

Campfire voices we raise

Songs to remember through Guiding days

Lights out — daylight has gone

Stilled is the chatter and silenced the song.



## What did Camp Uralba mean to YOU?

My impressions of Camp Uralba were those of open-eyed wonder and amazement: wonder at the tremendous amount of organisation that had previously been done, and amazement at the great set-up of the whole camp and the great number of new faces of all ages . . . .

. . . Meeting new people, making new friends, exchanging ideas and gaining a new experience were what Camp Uralba meant to me . . . .

I am looking forward to participating (if opportunity arises) in the next State Camp.

Many, many thanks,

LYNETTE RICHARDSON,  
2nd Heathmont Company.



. . . It was eight days of fun packed activity, companionship and learning to practice our eight point program.

A special feature of the Camp was the Gateway Competition, each gateway forming the entrance to one of the 25 sub-camps. Each camp name and display depicted the name and life of a great Australian who had made his or her home in the outback, etc. A lot of hard work and fun went into construction of the gateways . . . .

JENNY DARBYSHIRE,  
4th (St. Andrew's) Box Hill Company.

To me Camp Uralba meant learning more about Guiding through practical and interesting activities, meeting people, making friends and learning to tolerate others with different ideas . . . .

. . . It was an experience that none of us will ever forget.

MARYANN BROWN,  
6th Kew Company.



. . . On Tuesday, 6th January, I woke very early, eagerly looking forward to the next seven days. And my eagerness was not misplaced. For the first time I would be sleeping under canvas at Britannia Park with hundreds of other girls from all over the state.

I was very proud to be representing my Company and I hoped the next week would not be wasted on me, that I would learn many new things to take back to them.

. . . During our days at camp we were given challenges to do, each one having six parts.

. . . In the fourth challenge each girl had to sit for 15 minutes without uttering a word. What a hopeless task!

. . . I think I will never get over my home sickness for camp Uralba — I will always remember the warmth, friendship and knowledge gained there . . . We owe so much to Mrs. De Marchi and all her wonderful helpers who worked so hard to make Camp Uralba a great success, a place where we could learn and share.

KAREN.





... The program included a very good 5½ mile hike through most interesting bushy hill land. We saw many aspects of interest, especially birds, among them a lyre bird. The hike was tough but very enjoyable ...

... In the pioneering course we were taught to make rope ladders, lazy man bridges and chariots. Once these were made we had chariot races which were good fun ...

**MERILYN VOIGT,**  
1st Woorinen South Company.

... On the first day we saw our first snake. Our leader killed and buried it. That night we were not game to move far from our camp because of snakes. But next day, after a lesson about what to do in case of snake bite we were no longer "chicken" ...

... I have three new pen friends, a rope ladder swinging in my back yard which I made myself and it is lots of fun. I know many, many new songs and I am looking forward to many more camps.

**TANIA NIKOLIEV,**  
2nd Williamstown Company.



... We were put into patrols and each patrol had different chores to do each day. When my patrol were cooks we had to get up at 6 o'clock to get breakfast ready. Everyone else slept until 6.30 ...

**LEA IZZARD,**  
1st Parkmore Company.

What a magnificent sight to see all the guides and leaders at Olympic Park to board buses for Britannia Park. How excited everyone was. Although very few knew anyone else, conversation was soon flowing. Our waiting was over Camp Uralba had begun ...

In no time what seemed a wooded reserve had turned into a "Village of Tents".

... During "free" time a popular place was the Giraffe House, where badges and souvenirs were sold. By the way, who said, "Was Britannia Park once a zoo?" when they saw the sign, "Giraffe House", above the entrance.

... My thanks to the organisers, leaders, helpers and the editor of "Blurb". The camp was great.

**MANDY WOODHOUSE,**  
1st Nar Nar Goon.



... Camp Uralba is now a happy memory of "Getting to know" campfires under the wonderful leadership of Miss Barr, the challenge of running a happy, organised camp, gateways taking shape, soft guitars and recorders practising our Uralba song, side-splitting efforts of First Aider rehearsing our Visitor's Day act, station antics by the guides, the time I marched my whole camp to combined colours — three days too early, the lump-in-the-throat final campfire and deafening cheers of guides for their own camp leaders.

Then on the final day — the flurry of striking tents, reclaiming lost gear, a moment of quiet as our camp flag came down, (tears? — yes, there were a few), a final wave as buses drew out, and all of a sudden, a terrible Q-U-I-E-T ...

**B. GROVER,**  
Guider-in-charge,  
John Macarthur Camp.





Dear Matilda,

I would like to thank everyone who was involved in planning and running "Camp Uralba". From it I gained new friends and ideas. The theme was "At Home in the Bush" and we had challenges and activities centred around this theme. Beads were awarded to those who finished the challenges. Combined campfires were held with Miss Peg Barr leading and teaching us songs.

Visitors' Day kept the people at the information tent busy directing parents and friends to their respective guides. Competition for the award of the Silver Gumnut for the best gateway was keen and congratulations go to Chaffey Brothers and Daisy Bates for their winning efforts.

Guides' Own was held on Sunday night with the "Scoutreach Group" leading the service.

JILLIAN HAYNES,  
2nd Box Hill Guide Company.

Dear Matilda,

On behalf of the North Springvale District Guides who attended camp "URALBA", I would like to thank all those responsible for the organisation of the Camp which proved to be a tremendous success.

Also a few words of praise for Scout Leaders at Olympic Park who supervised departure and arrival of buses. On visiting day the two policemen at Britannia Park did an excellent job with the help of Guides and Leaders, in directing traffic in and out of the parking area. Our heartfelt thanks to all.

Mrs. ZANDRA KENNEDY,  
(Mulgrave).

\* \* \*

Time does not count for happy people.

\* \* \*

## SERVICE FLASH

Interest badges in the Guide Section ask for a girl's best effort and the syllabi give a lead as to how the girl can increase her knowledge and skill in that particular topic.

The Service Flash also asks for the girl's best effort. It is there to encourage Guides to give service to others and demands certain self sacrifice.

The District Commissioner is responsible for helping the Guide choose a challenging service project, and to check that she carries it out to the benefit of the recipient.

The Guide must have her Commissioner's approval before STARTING the service and at this time they can decide how the record card is to be kept. In some instances it may be best that the girl sign her own record.

All Guiders and Commissioners need to read "How to Use the Australian Guide Badges". This booklet gives guidelines to help determine which services are suitable for the Flash.

For example, the service must be needed, not just created so a girl can get a badge.

It cannot be something she is already doing — and as with other badges, if she has not time to do it, she does not go for the badge.

Twenty four hours of service within six months is required for the badge, but if needed, the service is to be continued. Some types of service may be able to be carried on by a different girl, but others — like Pack Guide — need the continuity of the same girl and the Pack must not be used as a venue for badge hunters.

Having checked that the total twenty four hours of service have been carried out within a six-month period, the Commissioner contacts the recipient to ascertain that the Guide carried out her service satisfactorily. In the past Service Flash cards were sent to the Guide Adviser for approval — this is no longer necessary. The badge can be obtained from the Guide Shop on presentation of the record card approved and signed by the District Commissioner.

YVONNE JAMES, Guide Adviser, 29/2/1976.



## IRENE FAIRBAIRN FUND

### The I. F. Badge

Have you SEEN and BOUGHT a badge yet? The fund gains five cents from each badge sold.

This badge may be worn throughout 1976 by Brownie Guides and Guides (but of course may be bought by both girls and adults to sew on camp hats and blankets). Brownies should wear the badge on the left sleeve underneath the Venture Badge.

Guides should wear the badge underneath the World Badge.

It has been suggested by the Australian Sections Committee that the badge may be worn on uniforms when a Guide or Brownie has found out:

- (i) Who Irene Fairbairn was.
- (ii) Her contribution to Guiding.
- (iii) What the Irene Fairbairn Fund is used for.

(See April "Matilda" for answers to some of these challenges.)

So Guiders, please encourage your girls to do a little research and make this fund something that is REALLY useful and helps more of our young members to mix with Guiding groups in other states and countries.

**IF** we build up this Fund to a substantial amount, girls and young leaders can be selected to attend camps, gatherings and trainings as opportunities arise.

**IF** young people have these opportunities, they can come home and help us all realise what a wonderful world-wide movement we belong to. They can share their experiences to benefit Guiding in their own areas.

**IF** we have more money, we can invite occasionally Guides from overseas, to visit us, and any of us who were part of Camp Southern Cross know what a warm experience that can be.

**IF** we do all this, the Fund will be achieving one of Mrs. Fairbairn's dreams — to help

girls meet and understand each other at their own level, and have lots of fun together while enriching their lives in this way.

All these things are now carried out in a small way, and the Committee administering this fund plans to consider application from each State and/or the Chief Commissioner and Australian Departments, twice yearly. Closing dates for applications will be 30th April and 30th October. If you have an outstanding person in your area, and would like to apply on her behalf for a particular event, please contact Headquarters, who have application forms and would be pleased to help you.

SHIRLEY FARROW,  
Chairman I.F.A. Committee.

## BROWNIES GUIDES RANGERS

### St. George's Day Service

St. Paul's Cathedral  
Friday, 23rd April, 1976.

Members of all denominations and religions are invited to join in this annual Scout and Guide service conducted this year by the Rev. J. Ryan. Speaker will be Mr. D. Edmonds and the musical group will be "Scout-reach".

Come to sing and worship with your brother Scouts and sister Guides. Renew your Promise. Bring your unit flag for the colour ceremonial.

As Service starts at 7.45 p.m. please be seated by 7.30 p.m.



MATILDA

# AUSTRALIAN EVALUATION OF EIGHT POINT PROGRAM

An evaluation has recently been completed by all States. These findings were collated and discussed at the Australian Sections Training Conference held at Glen-garry, Sydney.

Questionnaires were distributed to girls in 5 Brownie Guide, 5 Guide and 3 Ranger Guide units in each Region. Leaders from 4 Brownie Guide, 4 Guide and 2 Ranger Guide units were also asked to fill in separate questionnaires. To obtain a true overall picture units were selected from differing situations e.g. varying socio-economic areas, ability levels of girls and leaders, background experience and age groups.

The Eight Point Program has been operating since September, 1969 and the aim of the evaluation was to discover how it is working in units, whether it is being used effectively to achieve the aim of producing a self reliant, self disciplined person with the desire to use what she has learnt, and to try to correct any weaknesses or problems so that the girls may receive maximum benefit and enjoyment from the program.



## Brownie Guide Section

- Brownie Guides said it is FUN to be a Brownie Guide.
- 88% enjoy challenging themselves. Do we, as Leaders, give them opportunity and encouragement to challenge themselves and further develop their skills and attitudes in our programming? Too many Brownie Guides in one unit do not give leader, or girl, this opportunity.
- Not all Brownie Guides own or have access to a Hand-book.
- Ventures are one part of the program that play an important part in the development of the girl, but **too many** do not provide a balanced program.

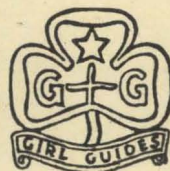
- Most Brownie Guides agreed it is good to have a Pack Guide, yet three-quarters of the units are not using this valuable link between Brownie and Guide sections. 65% of the units have little contact with Guide units.
- Rangers — Brownie Guides need to know that the Movement has a third section.
- Some units are keeping their Brownie Guides, when these girls would benefit from and enjoy the Guide section program.
- Some leaders have no record of or can not remember which trainings they attended. If we can not remember when we last attended training, how can we remember what we learnt?

One Brownie Guide said, "Can you send some more of these (questionnaires) — hope you will try to fix things."

Over to you Brownie Guiders.

JANET COOPER.

Brownie Guide Adviser.



## Guide Section

Thanks to the many Guides and Guiders who conscientiously filled in questionnaires throughout Australia, a worthwhile evaluation of the program was made possible. This was presented as a 10 page report for the Guide Section and contains much valuable detail. In summary the areas highlighted were: **Age range:** Guiders are keen for their girls to move into Rangers by 15 and Guides showed that the Guide section program rapidly loses its appeal from 15 on.

## Patrol System

It seems many Guiders are doing what they should be training and letting their Guides do — e.g. creating the pre-promise challenges

and promise ceremonies etc. The girls reported lack of patrol time, lack of opportunity for patrol activities and lack of responsibility given them to carry out their duties.

### Assessment of Eight Point Badge

It appears that Guiders are trying to create a test system instead of assessing this badge on participation in a program. Guide Handbook Part 2 describes the assessment requirements and this does not include doing individual challenges. However, happily, 80% are using Patrol Leader Council to assess the Eight Point Badge.

### The Promise

For Guides it seems the Promise is learnt and understood as a means of getting into uniform, but something which does not consciously affect their daily lives.

### Enjoyment

Camping topped the list for popularity. "Childish repetitive running games" and "doing nothing — unorganised meetings" were least liked.

Can we Guiders do something about these areas of weakness and make Guiding worthwhile for the girls who join our companies?

YVONNE JAMES,  
Guide Adviser.



### Ranger Section

Questions for Ranger Section included:

- Reasons for joining Rangers . . .
- Value of pre-investiture challenges, Ranger challenges, certificates, and service projects;
- Likes and dislikes, joint activities with boys, planning and running the program, choices in programming, enjoyment or otherwise of Rangering, and many more . . .

Added comments were invited, giving Rangers opportunity to express their views.

The evaluation was of the Eight Point Program, not of Rangers or Guiders.

Results from all States, when collated, were of immense value for discussion at the Australian Section and Training Conference in January, 1976, and will be used in planning of trainings and programs, now and in future.

We would like to thank all who participated so fully in answering the questionnaire.

JEAN TWIST,  
Ranger Adviser.

## LOST PROPERTY — CAMP URALBA

### From Home Buses

- Yellow PVC Raincoat — Jenny Barrett.
- Blue polystyrene drink container — K. Beckham, Donald.
- P/L Beret — Dadswell, 363 O'Shea Street, Pascoe Vale.
- Navy blue jeans — 32" (in pocket-yellow pennant with Helen Nicholls, 3rd Frankston).
- Green plate bag — Kath Guy.
- Guide Beret — L.A.
- Guide Beret — unnamed (Gilbert/Mawson bus.)
- Sleeping bag — Francene McCorkell, 6 King Street, Koroit.
- Green square haversack — Bronwyn Smalley, John Macarthur.
- Hair brush — (Gilbert/Mawson bus.).

### From Camp

- Royal blue ribbed polo neck jumper.
- Navy blue V necked jumper — W. Body.
- Pale blue windcheater — A. Reilly.

- Song Book — H. Baulch.
- Singlet — Size 14.
- Blue towelling hat — Savage, Beaconsfield.
- Towelling hat — L. Nation.
- Pair white socks.
- Blue jeans — Czempenski.
- Yellow raincoat — Tracy Aylen — 884754.
- Blue camp hat — Phyll.
- Guide belt — S. Fehring, 2 Mooroopna.
- 1 Yale type key on safety pin.
- Singlet — A. O'Keefe.
- Skirt hanger — K. Slade, 2nd Herne Hill.
- Silver clasp knife.
- Black clasp knife.
- Bathing cap — S. Logan.
- Woggle — leather plaited with Guide badge.
- 2 camp woggles — M. Dedman, W. Buckley.
- Case type key on blue nylon fabric.
- Purse, red leather, and money — (John Gould camp).



---

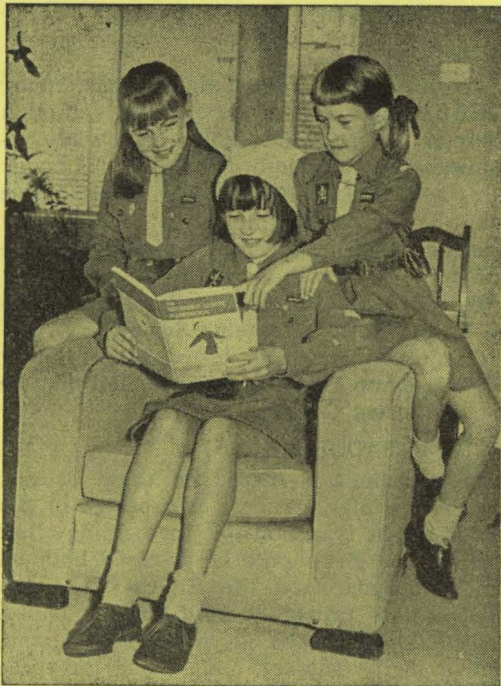
# TRAINING PAGES

---

## PREPARING FOR THE TEST

"As brownies are wide awake they are all interested in ever so many things, and like to learn and do more about them".

(Brownie Guide Handbook.)



"While working on the 8 Point Program you are bound to become interested in all sorts of different things, both as you find yourself involved in Patrol and Company plans and activities, as you work on the Self-Training Scheme for yourself. You may feel there is one thing about which you would like to learn more, or which you would like to try again. You may feel you have really become quite skilled or knowledgeable in a particular subject. Or

you may already have an interest or hobby and feel that progressing in that is part of your progress in one of the eight fields, even though you pursue your hobby apart from Guiding".

(Guide Handbook.)



"How do you use your free time? Do you enjoy hobbies? In the world of the future the experts assure us we will be working fewer hours per week, and so we will have more spare time for our hobbies. You may have, or discover a hobby which you would like to follow, or would enjoy doing with a group of friends."

(Ranger Guide Handbook.)

These quotes from our Section Handbooks introduce to the girls the Interest Badge (or in the case of Rangers — the Interest Certificate) Scheme, the aim of which is to encourage individual girls to take up and pursue hobbies or interests.

The syllabus of the badge gives an indication of ways in which she can follow her interest, and sets targets or challenges through which she can show how far she has progressed.

The actual tests which a girl may decide to take may stem from a hobby which she already has, or an interest may develop from an activity which she may take part in with her patrol, or as part of a unit program. (See "Matilda" Training Pages June 1973 — Opportunities! Where are they found?)

### The Guider's role

As a Guider you need to:

1. Provide opportunities for the girls to discover interests by means of a varied and balanced unit program.
2. Once an interest is discovered, encourage each girl to make as much effort and progress as is possible for her, at her age and stage, and according to her ability.
3. Provide a way for her to obtain the necessary knowledge and practice. (Every community has people with a keen interest in a wide variety of subjects.)
4. Judge how far she can go before she takes the test.
5. Arrange for her to be tested when she is at her acme of interest.
6. Check that she is **READY** for the test to avoid wasting a tester's time.



## Badge Syllabus

### Brownies

Syllabi for Brownie Guide Interest Badges are set out in the Interest Badge Booklet available from Headquarters.

### Guides

Syllabi for Guide Interest Badges are set out in Part 2 of the Handbook. They are divided into different groups —

### CHALLENGE BADGES

These give the girl her own choice of clauses, and this choice should be based on what is a challenge to her.

The standard achieved is relatively unimportant, the test being based entirely on the **EFFORT** expended. All clauses in these badges may be tested by the girl's own Guider **provided she is warranted and has enough knowledge of the subject.**

### JUNIOR BADGES

These are designed mainly for girls during their first and second year in Guides, though there is no age limit. Junior badges are removed when their equivalent "over 13" badge is earned. Junior First Aid and Junior Nurse may be tested by the girl's own Guider **provided she has received training in these subjects.**

Tester for Junior Lifesaver must be **approved by the Royal Lifesaving Society.**

Camp Tenderfoot is tested by a Guider holding **Camp Permit or licence, and may be the girl's own Guider.**

### OVER 13 BADGES

An age limit is placed on these badges, therefore a high standard is expected of the Guide as she is responsible for helping other people. The girl should be assessed both on her Knowledge and the **EFFORT** she has expended to prepare herself for the badge. Instruction must be given by people competent in the subject, and testing for these badges **MUST BE PRACTICAL.**

### GENERAL BADGES

These are written in general terms so that topics not covered by another badge can be applied.

### Rangers

Part 2 of the Ranger Guide Handbook sets out the syllabus for an Interest Certificate. Rangers may use this syllabus to gain an interest certificate in a hobby or interest of their choice.

## The Test

The District Commissioner is responsible for the testing for Interest Badges and Interest Certificates, and usually there is a panel of testers of badges most commonly taken.

If there is no tester for a badge one of your girls wants to take, your Commissioner will find one for you, or may suggest that you do so yourself. For many badges a highly skilled expert is not required, and you can usually find someone with a keen interest in the subject.

The tester should know —

1. What is in the syllabus beforehand.
2. The particular way in which the testing should be done — e.g. individually, practically where possible.
3. Any information about the girl which may have a bearing on the standard that can be expected of her.

If possible, it is better for the girl herself to contact the tester and arrange a time which is suitable for the tester.

The girls should be encouraged to wear uniform to the test, except where the wearing of more suitable clothes is necessary for the test.

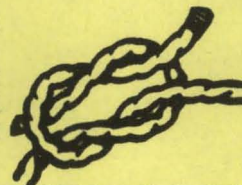
Guiders should check that the girls understand the importance of punctuality when going for a test.

The girls should be prepared to re-imburse the tester for any expenses which she may incur in testing.



## After The Test

1. If the girl has been successful, arrange for an interest badge certificate to be signed by the tester. Try to avoid having the girl "march to the test with an interest badge certificate book in her hand."
2. Whether successful or not ensure that a thank you letter is sent to the tester. N.B. Badge should not be presented until this has been done.
3. As soon as the girl has completed the test she is eligible to wear the badge, and you should try to obtain it for her as quickly as possible.
4. If possible, talk with the tester and receive a report on the test from her. A lot of information can be gained, too, by having a talk with the girl after the test. (Often a girl may feel that she has been passed too easily, and maybe this could mean that you have not prepared the tester thoroughly enough!)
5. Presentation of the Badge. This is a "ceremony" and the girls themselves should be encouraged to plan ceremonies for the presentation of badges.
6. Although the badge is presented to the girl, the certificate should be retained by the Guider, as it is necessary to produce all certificates when applying for a collective badge emblem. (These certificates could be handed to the girl when she leaves the unit.)



# HELPFUL HINTS FOR COMMISSIONERS WHEN VISITING BROWNIE GUIDE PACKS

Commissioners need to be prepared for literally anything when visiting a Brownie Guide Pack!

Brownie Guides invite you to their meeting and this is done after much discussion and preparation. The Welcome Ceremony has to be well planned and practised!

Quite often you are asked to "do something" and to a busy person who has not worked with this age group this may present difficulties. ("What can I do, say or take to interest these Brownie Guides?")

1. Have you visited another State or Country recently? Perhaps you have had an exciting or humorous experience which could be related.
2. Perhaps you have visited packs in another District or Region and have an idea or experience to share?
3. What about interesting souvenirs and collections you own? Brownie Guides enjoy looking at, feeling and discussing such objects — one at a time, of course!
4. Is there a game you could teach the girls? It can be a teaching game, an active game, a quiet or fun game.

5. Have you looked on your book shelves lately? Do you have a story book among your collection you could use? Some of the "old" stories still have great appeal.
6. Perhaps you have a talent, skill or hobby you could share with the girls. This is one way of being assured of another invitation! e.g. Paper folding; making artificial flowers; teaching a song; making musical instruments; a nature hobby, or having fun with needle and thread, etc.
7. Have you ever thought to tell the girls what your role is as Commissioner? Naturally you would only need to highlight one or two aspects.

**Please remember** you are the link between the girls in the Pack, District, Division, Region and State and it is the obvious way to show the structure of Guiding to the girls.

Whatever you "do" the first impression you make is important. Create a friendly atmosphere by being bright, happy and enthusiastic and you will be the Commissioner the girls will remember.

(PLATYPUS)

## FROM ALL SECTIONS TO ALL LEADERS

Dear Leaders,

When there are special functions and members of your unit are nominated or apply to attend, **please make it your responsibility** to see that the girl —

- (a) gives full information as asked for on any application form
- (b) returns any form prior to date requested
- (c) has complete and correct uniform
- (d) understands that she must co-operate with the Guiders in charge of functions and/or her particular group
- (e) has good health if it is for a function of more than one day (special arrangements are made if extension guides are to be included)

Note: It is important that any necessary information regarding a girl's health is passed on to any leader taking over responsibility of leadership from you

- (f) does not withdraw at the last minute unless ill or family moving etc.

JANET COOPER, Brownie Adviser.  
YVONNE JAMES, Guide Adviser.  
JEAN TWIST, Ranger Adviser.  
JESSIE LAMOND, Camping Adviser.  
PHYL THIELE, Training Adviser.



# CONSERVATION

There was such a racket in the garden this morning I just HAD to paddle out in Bill's slippers and take a look.

And there, right before my disbelieving eyes was the strangest, noisiest "singing tree" I have ever seen!

Our ordinary red flowering gum tree, had come to life and was covered with noisy grey and yellow upside down feathery "bells", gaily swinging from the flower covered branches. They were so interested in their breakfast of nectar they did not even notice me so I watched for quite a while before the noisy miners finally flew off.

Before we planted native trees and shrubs our garden was pretty enough, but hard to keep tidy. We had to be constantly weeding and digging, and the only birds we saw were sparrows and blackbirds.

Now we have the joy of a trouble free garden, with the added bonus of native birds.

The miners are among the latest birds to join our garden family and we had not seen them before we planted the flowering gum.

It was such a lovely day I decided to clean the windows and while doing so I heard the clear, sweet call of a thrush from trees in a nearby park. Just for fun I tried answering him, and he answered back! I whistled again and his call came from a closer tree.

What a lovely morning we had as he changed his calls two or three times and really tried me out with my attempts to answer him.

Of course this was a highly amusing activity for neighbours too and no doubt they were greatly entertained by the peculiar person perched on a step ladder whistling at herself in the window!

Birds will come quite close if you learn to imitate their calls.

It is a wonderful way to get to know them in the bush. As long as you remain still and quiet they will come very close.

Our family of Crimson Rosellas were here this morning too and we shared a few "words" before they left after breakfast in the other gum tree.

I well remember the first time I tried answering a bird call.

I was at the clothesline when I heard him and I became curious to know what he was, so I tried to imitate his call.

Before long we began a "conversation" which lasted for several minutes, but he would not come out of his hiding place in a neighbour's mulberry tree.

Then, just as I gave him a final "answer" and turned to go inside, the pallid cuckoo zipped over the fence, his tail feathers brushed lightly across my hair as he landed in our plum tree a few feet away.

I was so astonished I burst out laughing and he flew off, obviously offended.

Since then we have often tried "talking" to the birds. The results have been interesting though our neighbours are convinced we are all "feather brains".

ANNE L. FRASER.



## PHOTOFLORA '76

Native Plants Preservation Society of Victoria presents screenings of top competition slides of **Native Flowers, Birds and Wildlife**, at city, suburban and country centres between 10th March and 10th April, 1976.

Details of venues, dates, times and admission charges are available at 3 Allfrey Street, East Brighton, 3187.

Pamphlets available in the Guide Shop.

Except for articles where copyright restrictions are indicated, material in "Matilda" may be reprinted in Guide and Scout magazines without prior permission. A credit line would however be appreciated.

# LOCAL



# ASSOCIATION SECTION

## Thought For the Month

Happiness adds and multiplies as we divide it with others. A. Nielen.

## "Matilda" For Assistants

There has been concern lately that our State magazine "Matilda" is not always passed on from the unit leaders, who receive a free copy each month, to their assistants. This means that assistant leaders are not hearing important news about their Section Conferences, forthcoming events, training information and general news of Guiding in Victoria.

Would Local Associations consider providing a copy of "Matilda" for each assistant leader in their District, as they used to do for their leaders?

Please talk to your District Commissioner about this and she will supply you with a list of assistants. All you do then is to send the list of names and addresses to Headquarters, with a year's subscription of \$5.00 per head, and you will know that all your Guiders have the up-to-date information supplied in "Matilda".

If your Local Association is not already a subscriber, you could add your Secretary's name and address to the list. Please consider this suggestion seriously, as it would help solve one of our communication problems and bring many more Guiders closer to what is going on throughout the State.

## Chairing A Meeting

How many readers have been asked if they would be willing to be nominated for President of their Local Association, only to give the immediate answer — "Oh, no, I couldn't possibly do that! I don't know how to chair a meeting!

The thought of chairing a meeting is far worse than actually carrying it out. Remember that you are among friends who will do all they can to help you in your new venture. It would be a help if you have an experienced secretary to work with you, but if not, it is fun learning together, so do not be put off by inexperience.

There are some very helpful booklets on Chairmanship available in the Guide Shop, but the most valuable of all is our own "The Why and How of Local Associations" which tells history, aims and purpose of Local Associations. In particular, Chapter Five contains much helpful advice on chairing a meeting as well as meeting procedures, outlining duties of secretary and treasurer.

Every Local Association should have a copy of this booklet at each meeting, along with a copy of the Local Association Constitution.

So next time you are asked to take on Presidency of your Local Association, give it serious consideration and accept happily. Remember that the more you put into this new venture, the more rewarded you will be in satisfaction and in realisation that you can "chair a meeting" after all.

## Doncaster Luncheon —

Guest Speaker at Doncaster Local Association's Annual Luncheon this year will be Mr. Geoff Hooke from the "Sun" who will demonstrate the art of cartooning.

The Luncheon will be held in the Methodist/Presbyterian Church Centre, Westfield Drive, Doncaster, at 11.30 a.m. on Tuesday, 13th April. Tickets are \$2.00 each and bookings may be made with Mrs. Betty McKillen on 848 1243.

## Training Days

Training Department would like members to note the following Local Association Training Days which have been arranged throughout the State.

24th March — Moe.

27th April — Hamilton.

29th April — Geelong.

30th April — Bacchus Marsh.

8th June — Rushworth.

Please refer to Training Calendar for details.

\* \* \* \*

Please send articles for this Section to Mrs. D. O. Oldfield, 4 Embling Road, Malvern, 3144.

## GUIDING FLOAT

Knox Division was asked to join other local organisations in a Parade through the shopping centre of Boronia.

A Brownie father, Mr. Golding, kindly lent his tray truck on which to build our float. As parade day drew nearer each District prepared for their part and helped to gather Guiding bits and pieces for our masterpiece.

The day came at last, and the Scoresby Guide Hall was a scene of great activity and fun as we prepared the float. Guides from Boronia gathered gum branches and other greenery to cover and disguise our truck. Mrs. James lent us a large eight-point star from James Cottage.

After a slow drive to Boronia our float arrived at the starting point where Brownies, Guides and Rangers had assembled either to take positions on the float or to march behind. Some Guides and Brownies were dressed in uniforms of other countries to show that Guiding is international. Other Brownies sat around a toadstool while Guides were "in camp" outside a tent with a fire.

We were off — led by colours and followed by a long line of marching Brownies, Guides and leaders. Our entry was judged best float. The Division was presented with an attache case for our effort.

Mrs. J. W. HANN,  
Knox Division.

## Recipe Corner

### CHOCOLATE CHERRY BARS

250 gr. dark chocolate, 2 eggs, ½ cup castor sugar, 1 cup coconut, ½ cup chopped glace cherries.

Melt chocolate in double saucepan stirring until smooth. Spread chocolate over base of buttered lamington tray and refrigerate. Beat together eggs and sugar until light and frothy, then gently fold in coconut and chopped cherries. Spread over chocolate and bake in centre of a moderate oven for 10-15 minutes, until topping is golden and firm to touch. Cool, then refrigerate. Before serving, sprinkle with sifted icing sugar and cut into small fingers.

## PATROL LEADERS' WEEKEND

Terang Patrol Leaders' training weekend held at Port Fairy was a huge success.

Two leaders and seven girls stayed in a house close to the sea. En route to Port Fairy we visited Hopkins Falls which were in flood and at their highest level since 1946.

Sessions were divided into theoretical and practical, with training in record keeping and meeting procedure followed by trails and bird identification along the beach. Then indoor activities suitable for patrols, quizzes, competitions, learning how to assess each girl's progress in the 8 Points, how to acquire a Patrol Equipment Box and what to put in it, methods of raising money for Patrol funds and how to get to know your Patrol.

After a barbeque tea we hiked around Griffiths Island and saw the muttonbird rookery, the lighthouse and the site of the earliest houses which date back to whaling and sealing days.

The girls were successful in outsmarting the leaders with their trail. As well as the usual gulls and sand-pipers we met several pairs of pied oyster catchers and a log covered with live gooseneck barnacles. Muttonbirds wheeled close to our heads when we stood near their rookery as darkness fell.

A tour of the historic little town took us past many of the original buildings and we concluded our visit by inspecting the fishing fleet. A highlight of the weekend was a guided tour over a large and immaculate racing yacht.

We also saw the two masted ketch, "Reginald M", which is being re-fitted to serve as a passenger craft between Port Fairy and the Flagstaff Hill Maritime Village, Warrnambool.

Other Patrol Leader trainings have been held at Talindest Camp site, in the house at Sherbrook River, and a bike hike to Dynan Falls several miles from Terang.

Each has been very successful and we find that different surroundings give added interest and opportunity for many new activities which cannot be undertaken at the guide hall.

ANNE L. FRASER.

## WAVERLEY EXTENSION BROWNIE PACK

At "Marathon" Spastic Centre, Malvern, a "Post Pack" was run for many years. The Guider, Mrs. Betty Hall, sent a long illustrated letter to the Brownies once a month. With the enthusiastic help of occupational therapists, this letter formed the basis of a Brownie Meeting for those well enough to participate.

However, half an hour a week in school lunch time hardly gave any results. For some months, Mrs. Hall travelled from Mooroolbark to try to give the girls the Brownie atmosphere at first hand.

As "Marathon" plans eventually to build a new school in Waverley Road, Glen Waverley, it was decided, when opportunity offered, to open a pack for physically handicapped girls in this area. Brownies from "Marathon" formed the nucleus of the Pack.

Now, after six months, results have been gratifying. Taken out of the hospital atmosphere and meeting on a Saturday afternoon for 1½ hours the "post" Brownies have come alive. They now go out to meetings just like their brothers, sisters and friends.

This Extension Pack is run as all other Packs — Brownie Ring, Pow wow, games, songs, handcrafts and Brownie Bells — but all activities are adapted to the girls' particular needs.

One of our favourite games is overhead ball — very strenuous for leaders who are legs for the girls!

Guiders — BEVERLEY DEAN,  
THEA ANDERSON.



## TERANG RE-ENCOUNTER

Community co-operation was well in evidence when I was invited to attend the Annual Meeting of Terang District. In a way, it was a homecoming because Terang was where I was first introduced to the Guide Movement.

The week before the Annual meeting I was asked to visit the Guide Company where all members were smartly uniformed to welcome their new leader. It was also the night of the "mini" Show when all kinds of handcraft were judged to correspond with sections for the forthcoming Agricultural Show. Mrs. Rendal, who has a long association with guiding at Noorat, was on hand to judge and to give advice, for winners of each section were to compete in the local Show, a member of the unit being given the responsibility to see that entry forms were obtained and forwarded to the Secretary. This was the night too for a full dress rehearsal of a play to entertain parents and guests at the Annual Meeting.

On the night of the Annual Meeting their Guide Hall, very clean and tidy, had large vases of flowers to give atmosphere for the special occasion. Of course parents were there but there were many guests including the Shire President. The meeting followed the lines of Annual Meetings everywhere, with Mr. A. Bates, one of the Rotarians responsible for the Guides having their own Hall, taking the chair for the election of office bearers.

Then followed a very happy part of the program when fourteen mothers were enrolled as members of the Local Association and one mother re-affirmed her promise.

Each mother was presented to the District Commissioner by her Guide and/or Brownie daughter.

Members of the Company then presented an excellent performance of Little Red Riding Hood in very modern dress.

The evening came to an end with the Guides and Brownies very capably caring for their guests' needs at supper.

I was delighted to be at this meeting and to renew acquaintances.

MERLE MARSDEN,  
Rosanna.

MATILDA

## FROM ASIA — PACIFIC NEWSLETTER

### New Zealand

Each year the Scout Association holds a Flying Training School of 10 days duration to which Ranger Guides are invited. There are three main scholarships; the chief one, giving private tuition until a private licence is gained, was won recently by a Ranger Guide, as was one of the three commercial bursaries. Each year the National Scout Executive chooses a Senior Flight Leader of the School and in 1974 this leader was a Ranger Guide who was one of the three second year students and had gained her "wings" the previous year. All instructors at this course give their services free and the various personnel involved give up holidays in order to participate.

### Israel

Arbor Day in Israel is sometimes called New Year for Trees. It is also Scouting Day, when parents visit the troops and watch the activities of the youngsters. On this day Brownies and Cubs pass up to scouts and new groups of little ones join the movement. The initiation ceremonies take place with flares on the ground and "Be Prepared" written out in flames against the evening sky. And as the children make their promise the movement is strengthened by yet another generation of scouts and guides.

### Malaysia

The National Girl Guides Association, Malaysia organised its 7th National Ranger Seminar and invited Member Countries of the Asia Pacific Region. Delegates from Australia, Bangladesh, India, Indonesia, Korea, Philippines, New Zealand, Singapore and Thailand attended the Seminar together with 129 Malaysian delegates. Resolutions put forward included:

- Continued effort to increase and strengthen the Ranger Section so as to enable them to contribute towards Community and National Development in a constructive manner.
- To hold a Ranger Seminar in a Member Country in the Asia-Pacific Region biennially.
- To send Young Adult Representatives (Ranger/Ranger Leader) to the World Conference.

### Korea

The Girl Scouts of Korea hold an English Speech Contest for high school boys and girls on 22nd of February each year to celebrate World Thinking Day.

In 1975, the theme was "The Right Attitude of Korean Youth during International Women's Year".

---

## *More Ideas to Help You GET MOVING*

- Don't eat lunch at your desk. Walk to a park. Sit under a tree.
- Help make the world beautiful. Get out and do some gardening.
- Play hide'n seek. Tag. Make up some games. And you can do it indoors or out.
- Ride a bike. Get the whole family involved. You will see places you could never go to in a car.
- Take photographs. The family at a picnic. A waterfall. The animals at the zoo.
- Go dancing. Old time. Modern. Rock. It is all good exercise. Enjoyable, too.
- Go for a swim. There are hundreds of swimming pools in Victoria run by local councils. There is sure to be one near you.
- Join in the next school working bee. That way you and the whole community benefit.
- Hire a boat. Go for a sail. Or row on a river.
- Make the most of a rainy day. Wander through the National Gallery and get some cultural exercise.
- Put a ring up on the garage and play basketball.





# MINI OLYMPIC GAMES



**Place:** Melbourne.

**Dates:** Friday, 3rd September, and Saturday, 4th September, 1976.  
The Mini Olympic Games will include three sports:

**Athletics:** Brownies, Guides and Rangers.

**Swimming:** Brownies, Guides and Rangers.

**Netball:** For Guides only.

**Ballgames:** For Brownies only.

By catering for different abilities, it is hoped we will generate interest and enthusiasm in all Regions.

Teams representing the Region, will be chosen within the Region prior to the Mini Olympic Games in September.

**Suggested Format for Mini Olympic Games:**

**FRIDAY, 3rd SEPTEMBER**

9.30 a.m. Opening Ceremony.  
10.15 a.m. Athletic Events.  
Swimming Events.  
Netball.  
Brownie Ball Games.  
4.00 p.m. All Events Close.  
All Semi Finals Completed.  
7.30 p.m.  
to Swimming Finals.  
11.00 p.m.

**SATURDAY, 4th SEPTEMBER**

9.30 a.m. Netball  
to and Finals.  
12.30 p.m. Ball Games.  
1.00 p.m.  
to Athletics Finals.  
4.00 p.m.  
4.15 p.m. Closing Ceremony.

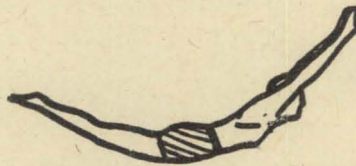
Please make sure your Region knows the dates, which are the last weekend of the School Holidays.

Each Region is being asked to appoint a representative who will receive all details of events.

Matilda will feature an informative article each month.

All competitors will be issued with a commemorative badge.

Gold, Silver and Bronze Awards will be presented by well-known Olympic athletes.





## CAMPER VAN 1976

Many of the qualified campers who have taken the Van during 1975 and acted as Guiders-in-Charge for a weekend, have been delighted with the interest and enthusiasm they have met, thoroughly enjoyed the experience of the weekend, and offer to do it again this year.

You can help them to help you by:  
(i) getting in touch with your Guider-in-Charge as soon as you know who she is. She wants to plan a super weekend for you and your Guides, so tell her what camping skills you have, what your guides most want to learn, whether they are practised in out-of-doors firefighting, enjoy knots and lashings, are genuine Nature-lovers . . . or whatever.

(ii) Considering the Guider-in-Charge. She may have a full-time job, and to agree to drive up to 200 miles on Friday evening, or to start at crack-o-dawn on Saturday is a very big thing. And she is not paid, as some people have thought. It is a voluntary good turn, a willing service to help you and your guides. Will you be sure they understand this and appreciate the situation? You, who know them, will be expected to help with control, e.g. if in their excitement they need to be "settled down" for the night.

You do send the Guider-in-Charge a map or directions to get to the campsite, but those who have travelled late on Friday agree that hospitality — bed and breakfast — for themselves and their travelling companion would be wonderful. They could then be fresh to travel the last few miles to the campsite early on Saturday.

(iii) Noting that finance is a problem. The van must be insured, maintained, serviced, refuelled. Present charge is \$2 per camper

(both guides and guiders) per weekend. If the group is small, this may not be sufficient. It is suggested that if small companies want the Van (some muster only 8 or 10 campers) they try to combine with another company in the Division or Region (Camp Advisers might help here) to ensure full use of the Van, since its equipment is enough for 15 guides and 2 or even 3 local guiders. If you do this, it may save an increase in the charge.

A cloth badge will soon be available to van campers, for use on camp hats, blankets, etc. Price 30 cents. Campers at the weekends last year may get these if their guider collects the money, adds postage, and sends the order to me at 3/26 Baringa Street, Mt. Waverley, 3149. They will be posted back to her for distribution.

Requests for the necessary form on which to apply for the van can also be sent to me. Please enclose stamped addressed envelope in which to send them to you.

ENID BUNNING.

Dear Matilda,

The 1st "A" Sale Guide Company went camping at "Carinya", Dutton.

Mrs. Lamond (Wonga), and Mrs. Anderson (Nara), brought the Camp Van all the way from Chadstone.

On arrival at camp we put up tents, there were three or four guides in each tent. After that we had lunch, brought from home. We did not have time to cook it.

Despite wet weather we learned many interesting things about camping that first day. Next day was much better, we had breakfast and went on a nature walk.

In the afternoon we decided to pack up most of the camping gear in case it started to rain again.

It was a very enjoyable weekend. We owe our thanks to our guider, and those terrific ladies in the Camp Van.

SHARRYN KIERCE  
1st "A" Sale Guide Company.

(Because of this visit by the Camp Van to Gippsland, Sharryn has added to her knowledge and experience sufficiently to gain her Camper badge.)

# Guide Shop News

## NEW ITEMS

Olave Baden-Powell by Elizabeth Hartley	\$1.00
Gould League — Birds of Victoria No. 6 — Rare Species	\$2.00
Edition No. 9 World Bureau Newsletter ..	0.05
Activities and Games for Patrols (For Patrol Leaders)	\$1.50
Brownie Cook Book (Paper back edition)	0.95
The Chief — The Life Story of Robert Baden-Powell by Eileen K. Wade	\$8.25
Baden-Powell — The Man Who Lived Twice by Mary Drewery (Paper Back edition)	\$1.65
Record — Australia 1975 National Festival of Song (Items from all States)	\$5.00
Guide and Guider Navy Windcheaters 8, 10, 12, 14, 16, 18	\$9.00
Guide Pendant and Chain (suitable as presentation gift)	\$7.00
B.R.O.W.N.I.E. Bracelet	\$5.00
Plastic Gift Style Memo Pads (refillable)	\$1.00
Plastic Desk Stand and Pen	\$1.00
Brownie Guide, Guide or Ranger Teatowel	\$1.50

## FOR PATROL LEADERS AND PATROL CORNERS

A Book for Patrol Leaders (New Zealand)	0.60
Patrol Leaders Book (United Kingdom)	0.40
Activities and Games for Patrols	\$1.50
Patrol Ideas Book	0.25
First book of Activities for Patrols	0.35
Off to Camp — The Patrol's Own Camp Book	0.85
Flag Ceremonial	0.40
An Australian Campfire Song Book	0.60
Guide Games and Recipes	0.40
The Story of the Four World Centres (reprinting)	.. .. .

## POSTCARDS

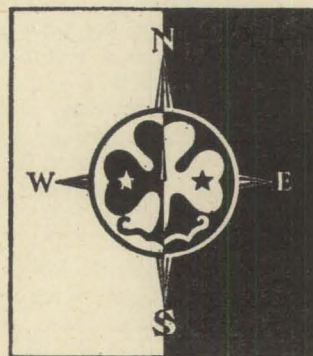
The Four World Centres	0.15
The First Lord Baden-Powell of Gilwell ..	0.10
Lady Baden-Powell	0.15
H.M. The Queen	0.10
H.R.H. The Princess Margaret as President of the Girl Guides Association	0.10
The President's Banner	0.10
The Founder's Memorial, Westminster Abbey	0.10
The World Flag Card	0.10
The Australian Flag and The Union Jack Card	0.18
Knots for Everybody	0.15
Hints on Girl Guide Badges — Child- nurse, Homemaker	0.50
Handywoman	0.65
Cook, Hostess	0.70
Health	0.40
Laundress, Needlewoman	0.40
Mapreader	0.50
Hiker	0.65

## CHARTS

Guide Law	0.20
Stalking	0.25
Firelighting	0.20
Useful Knots	0.15
More Knots	0.15

## Help Yourself To

Hike Cooking	0.85
Use a Map	0.40
Knotting and Lanyard Making	0.25
Be Prepared	0.25
Know Baden-Powell	0.40
Make Music	0.30
Paint	0.30
Play The Guitar	\$1.30
Make A Log Book	0.40
Go Abroad	0.30
Girl Guide and Girl Scout Uniform Charts Nos. 1, 2, 3 and 4 each	0.25
Milestones of Guiding Nos. 1, 2, 3 and 4 each	0.10
The Story of Our Flags	0.32
What is First Aid	0.70
Junior Nursing Manual	\$1.00
Junior Infant and Child Care Manual	\$1.20
Past and Present — A Story of Our Guiding (reprinting)	.. .. .
Scouting for Boys (Scout's Edition)	0.65
Are You a Camper	0.30
Outdoor Ideas	0.30
Wide Games and Night Games	0.25
Camp Cooking (for Patrols)	\$1.00
Camp Prayers for Guides (reprinting)	.. .. .
Cloud, Wind and Weather	0.35
Maps — How to Read and Make Them	0.50
Stars of the Southern Hemisphere	0.45



\* \* \*

The mind that is anxious about the future  
is miserable.

Knowledge is of little use if it is not under  
the direction of good sense.

\* \* \*



## SUBSCRIPTION FORM — "MATILDA"

**Note:** Copies of "Matilda" will be automatically issued free to:— Each Commissioner (but not Assistants), Each Guider in charge of a unit (but not Assistants), and certain other personnel.

PLEASE NOTIFY CHANGES OF PERSONNEL AND ADDRESS PROMPTLY.

### GIRL GUIDES ASSOCIATION

20 RUSSELL STREET, MELBOURNE, 3000

SUBSCRIPTION: \$5.00 per annum post free (single copies from H.Q. for 50 cents).  
(The need to increase the subscription is regretted.)

Please arrange for "Matilda" (commencing with the May, 1976; issue)  
to be sent to the following:—

Mr., Mrs., Miss and Initial	Name	Address	Postcode
.....	.....	.....	.....
.....	.....	.....	.....

(BLOCK LETTERS PLEASE)

For additional names and addresses, please attach extra sheet.

Ordered by:

Address:

Cheques or Postal Notes (to be made payable to Girl Guides Association) enclosed for \$.....

SUBSCRIPTIONS PAYABLE IN ADVANCE DIRECT TO HEADQUARTERS  
20 RUSSELL STREET, MELBOURNE, 3000

### TOWN & COUNTRY TREFOIL GUILD

Although only eight of the thirty-nine members of "Town and Country" Trefoil Guild were able to attend the most recent meeting, worthwhile achievements were reported and useful discussion took place.

The Guild gave the Guide Choir \$25 and organised afternoon tea at the Opening of Iluka — the Shoreham Campsite.

The Guild is making a marvellous patchwork quilt. We hope it will soon be completed, so if anyone wants to have a finger in the pie, or rather a patch in the quilt, please apply soon to Beth Chamberlain for details.

Plans for 1976 include gentle fundraising and a visit to member Sue Shave at Anglesea.



Trefoil Adviser, Mrs. E. Lister, will be overseas from 13th March to 15th April.

Any Trefoil queries, or information required during that time should be directed to Miss Amy Bush, 7/3 Harrison Crescent, Hawthorn, 3122.

\* \* \*

The secret of happiness is not to have what you like, but to like what you have.



**CONGRATULATIONS** to the recipients of the following:

**Emu Award**

Mrs. L. De Marchi, Balwyn.

**Wattle Award**

Mrs. S. Prince, Fairfield.

**Guiders Long Service**

(15 years) Miss P. Taunton, Cobram.

**Combined Long Service**

Mrs. G. N. Wilson, Dromana; Mrs. G. R. Morton, Armadale.

**Local Association Long Service**

Mrs. M. Ellis, Charlton.

\* \* \* \*

**Thanks Badge**

Mr. B. J. Heenan, Charlton; "Strathcona B.G.G.S." Canterbury, Rev. J. Reynolds, Canterbury.

**APPOINTMENTS AND WARRANTS**

A warm welcome is extended to the following:

**District Commissioners**

Mrs. N. H. Freeman, Moorabbin; Mrs. K. J. Doddrell, Mordialloc; Mrs. F. Keegan, Nullawarre; Mrs. J. Gillett, Springvale South; Mrs. S. Duver, Willaura; Mrs. O. Foote, Kyneton; Mrs. G. L. Fouse, Gisborne.

**Ranger Guiders**

Mrs. E. J. O'Donnell, Rosebud Rangers (Voyager); Mrs. J. Hardie, Sunraysia East Division Rangers (Illawong).

**Assistant Ranger Guiders**

Mrs. D. D. Scarlett, Rosebud Rangers (Voyager); Miss M. E. Torode, Sunraysia East Division Rangers (Illawong).

**Guide Guiders**

Mrs. M. Keddell, 1st Eildon; Mrs. A. J. Frew, 1st Coleraine; Mrs. P. A. Copeland, 2nd Red Hill; Mrs. R. Crawford, 1st Katamite; Mrs. A. Bouzaid, 1st Mornington; Mrs. C. Gringhuis, 4th Boronia; Miss C. M. Hubbard, 1st Brighton; Mrs. P. J. Oldham, 1st Cohuna; Miss G. D. Lewis, 1st Hurstbridge.

**Assistant Guide Guiders**

Mrs. F. Pierpoint, 2nd Mt. Beauty; Mrs. G. B. Rogerson, 2nd Bentleigh; Mrs. A. G. Holt, 1st Portarlington; Mrs. M. A. Crofts, 2nd Syndal North; Mrs. P. Gaspar, 4th St. Kilda; Mrs. A. Clark, 2nd Forest Hill; Mrs. J. Crawford, 1st Katamatite; Mrs. L. T. Adams, 1st Mornington; Mrs. D. Carthy, 4th Boronia; Mrs. R. A. Vickery, 3rd Boronia; Miss G. M. Summers, 1st Brighton;

Miss M. P. McEvoy, 1st Brighton; Miss R. Mathews, 1st Central Doncaster; Miss M. A. Norton, 2nd Ringwood; Mrs. C. Harsley, 1st Beaumaris.

**Brownie Guiders**

Mrs. G. H. Hirst, 2nd Ararat; Mrs. H. Carter, 1st South Melbourne; Mrs. R. Weston, 1st Colac; Mrs. F. Jones, 5th Colac; Mrs. W. de Vroom, 3rd Moe; Mrs. T. L. Teale, 1st Monash; Mrs. P. Robertson, 1st Edenhope; Mrs. L. Seater, 1st Olivers Hill; Mrs. N. Martine, 2nd West Waverley; Mrs. D. Ferguson, 3rd Caulfield; Mrs. B. Hammet, 1st Fish Creek; Mrs. I. J. Smith, 3rd East Brighton; Mrs. A. N. Raggatt, 1st Coleraine; Mrs. S. Hall, 1st Central Doncaster; Mrs. K. Evans, 1st Hartwell; Mrs. R. C. Last, 5th Mt. Waverley; Mrs. R. J. Haworth, 2nd Black Rock; Mrs. G. Smith, 1st Black Rock; Miss K. L. Stone, 1st Pakenham; Mrs. F. Samuel, 1st Syndal.

**Assistant Brownie Guiders**

Mrs. M. Hughes, 2nd Mitcham; Mrs. E. G. Collins, 2nd Colac; Mrs. S. Gray, 3rd East Doncaster; Mrs. S. Vallis, 1st Eildon; Mrs. R. C. Lindsay, 3rd West Waverley; Mrs. B. T. Kirk, 2nd West Waverley; Mrs. I. H. Lewtas, 5th Mt. Waverley; Mrs. R. H. Anderson, 1st Warrandyte; Miss L. Jarvis, 3rd Overport; Mrs. J. E. Pooley, 3rd Glen Waverley; Mrs. M. Sharp, 2nd Highvale; Mrs. J. V. Rayner, 3rd East Brighton; Mrs. M. Reichett, 3rd Central Doncaster; Mrs. A. Stuart, 3rd Central Doncaster; Miss A. H. Savage, 1st Beac.

**REGISTRATIONS**

5th St. Kilda Pack; 5th St. Kilda Company; 1st Ellinbank Company, 3rd Syndal Pack.

**RESIGNATIONS AND RETIREMENTS**

We acknowledge with gratitude the services given by the following, whose Warrants have been returned:

**Division Commissioners**

Mrs. G. J. Cross, Bellarine; Mrs. E. Pascoe, Dandenong; Mrs. G. J. Farley, Eastern Wimmera; Mrs. P. J. Wrigglesworth, Nunawading/Mt. Pleasant; Mrs. T. Davies, Upper Kiewa Valley; Mrs. G. M. Roberts, Moorabbin West.

**District Commissioners**

Mrs. A. Schukraft, Moorabbin; Mrs. M. Coombs, Puckapunyal; Mrs. D. Pentecost, Cann Valley; Mrs. J. S. Twisk, Healesville; Mrs. C. H. McCall, Ringwood; Mrs. J. L. Powell, Rye; Mrs. H. A. Poort, Girgarre; Mrs. R. H. Sherratt, Mordialloc; Mrs. M. Kenny, Coolaroo; Mrs. S. G. Porter, Kyneton; Mrs. L. G. Barrett, Willaura;

(Continued on page 188)

# TRAINING CALENDAR

**COMMISSIONERS AND UNIT LEADERS** with the necessary experience are welcome to apply for ANY Training. Applications should be sent **prior to the closing date** and be **accompanied by the training fee and a stamped self addressed envelope**. Training Fees are \$3.00 unless otherwise stated. **Early application for all trainings is recommended.**

## Stage 1 Training

**Ararat** — 29th-30th May and 19th June — times 10.00 a.m. to 8.30 p.m. Saturday and 10.00 a.m. to 4.00 p.m. Sunday. Applications to Mrs. A. Hucker, "Wallabadah", Lake Bolac, 3351 by **7th May**.

**Headquarters** — Thursday, 27th May, 3rd, 10th, 17th, 24th June, 1st, 8th, 15th July — time 7.30 p.m. to 10.00 p.m. Applications to Training Department, Guide Headquarters by **6th May**.

**Horsham** — Weekends 10th-11th July and 31st July-1st August — time 10.00 a.m. to 4.00 p.m. Applications to Miss D. Pearse, "Edgbaston", Donald, 3840 by **21st June**.

**Keilor** — Weekends 3rd-4th July and 7th-8th August — time 10.00 a.m. to 4.00 p.m. Applications to Training Department, Guide Headquarters by **14th June**.

**Mildura** — Weekends 31st July-1st August and 18th-19th September — 10.00 a.m. to 4.00 p.m. Applications to Mrs. R. Hocking, 812-14th Street, Mildura, 3500 by **9th July**.

**Packenham** — Weekends 26th-27th June and 17th-18th July — time 10.00 a.m. to 4.00 p.m. Applications to Mrs. H. Lardner, 51 Bundeena Avenue, Noble Park, 3174 by **5th June**.

## Stage 2 Training for Warranted Guiders

Note: Stage 2 training is aimed at helping you directly with your leadership role. Please assess your needs and list them on the application form.

**Ararat** — 29th-30th May and 19th June — time 10.00 a.m. to 8.30 p.m. Saturday and 10.00 a.m. to 4.00 p.m. Sunday. Applications to Mrs. A. Hucker, "Wallabadah", Lake Bolac, 3351, by **7th May**.

**Cardross/Merbein** — Weekends 26th-27th June and 17th-18th July — time 10.00 a.m. to 4.00 p.m. Applications to Mrs. R. Hocking, 812-14th Street, Mildura, 3500, by **4th June**.

**Pyramid Hill** — Weekends 3rd-4th July and 7th-8th August — time 10.00 a.m. to 4.00 p.m. Applications to Mrs. R. Wilkins, P.O. Box 492, Bendigo, 3550 by **14th June**.

## Pack Holiday Training

**Riddells Creek** — 9th-10th and 11th July — times and fee to be advised. Further information available from Mrs. E. Roberts, 11 Vasey Street, East Bentleigh, 3165. Telephone 57 3513.

## Patrol Leader Training

**Glenroy** — Weekend 10th-11th April — time 10.00 a.m. to 4.00 p.m. Note: Leaders Saturday, Leaders and Patrol Leaders Sunday. Applications and \$1.50 fee to Training Department, Guide Headquarters by **19th March**.

(50 cent lunch available. Please send orders with applications.)

**Mooroolbark** — Saturday, 31st May — time 10.00 a.m. to 4.00 p.m. Note: Leaders and Patrol Leaders to attend. Applications and \$1.00 fee to Mrs. H. Graham, 21 Warwick Road, Montrose, 3765 by **9th May**.

## Local Association Training

**Bacchus Marsh** — Friday, 30th April — time 9.45 a.m. to 3.30 p.m. Applications plus \$1.50 **per Local Association** to Mrs. G. Platt, Lot 109 Beresford Crescent, Darley via Bacchus Marsh by **9th April**.

**Geelong** — Thursday, 29th April — time 9.45 a.m. to 3.30 p.m. Applications plus \$1.50 **per Local Association** to Mrs. A. Bell, 1 Layton Crescent, Newtown, 3220 by **8th April**.

**Hamilton** — Tuesday, 27th April — time 9.45 a.m. to 3.30 p.m. Applications plus \$1.50 **per Local Association** to Mrs. D. Maconachie, 372 North Boundary Road, Hamilton, 3300 by **6th April**.

**Rushworth** — Tuesday, 8th June — time 9.45 a.m. to 3.30 p.m. Applications plus \$1.50 **per Local Association** to Mrs. J. Murphy, 73 Balaclava Road, Shepparton, 3630 by **18th May**.

## Residential Training Week

Date — 21st-29th August — subjects to include Stages 1 and 2 and Special Subjects. Further information available from the Training Department, Guide Headquarters.

## Special Subjects

### PIONEERING

**Mildura** — 10th April — 10.00 a.m. to 4.00 p.m. **plus Camper Badge and Patrol Camp Permits** 11th April — 10.00 a.m. to 4.00 p.m. at Apex Park — Applications to Mrs. R. Hocking, 812-14th Street, Mildura, 3500, by **22nd March**.

### PROGRAMMING

**Geelong** — Saturday, 24th April — time 10.00 a.m. to 3.00 p.m. Applications plus \$1.50 to Mrs. A. Bell, 1 Layton Crescent, Newtown, 3220, by **2nd April**.

## TRAINING CALENDAR (Continued)

### Special Subjects

### REFRESHER DISTRICT COMMISSIONER COURSE

**Daylesford** — Friday, 23rd March — time 10.00 a.m. to 3.00 p.m. Note: Please bring cut lunch. Apply immediately to Mrs. G. Platt, Lot 109 Beresford Crescent, Darley via Bacchus Marsh.

### WORKSHOP FOR BROWNIE GUIDERS

**Mildura** — at Apex Park — 10th April — Further information available from Mrs. R. Hocking, 812-14th Street, Mildura, 3500.

### FOR BROWNIE GUIDERS

**Headquarters** — Thursday — 3rd, 10th, 17th, 24th June, 1st July — time 10.00 a.m. to 2.00 p.m. Note: Applications may be made for the complete series or for individual days — **please mark clearly on your application** which days you wish to attend. \$1.50 for 5 days or 40 cents per day. Group limited to 20.

Content of training:

3rd June — Making teaching aids — choosing games. Their use and value in the Brownie Guide Program.

10th June — Games and activities introducing the use of balls, the care of nature, the Guide Movement in Australia, the Brownie Guide Promise.

17th June — Games and activities introducing tying parcels, packing a suitcase, health, carrying messages, Brownie Guide Prayers.

24th June — Games and activities introducing safety in the home, the National Anthem, singing games.

1st July — Games and activities introducing puppetry, drama, musical instruments.

Applications, fee and stamped, self-addressed envelope to be sent to the Training Department, Guide Headquarters by **3rd May**.

### FOR RANGER GUIDERS

**Headquarters** — 7th-8th August — time 10.00 a.m. to 4.00 p.m. Applications **including requests** to be sent to the Training Department, Guide Headquarters by **19th July**.

### GUIDE KNOWLEDGE BADGE

To help guiders' instructing Guides in the Guide Knowledge Badge.

**Headquarters:** Saturday, 10th April, 10.30 a.m. to 3.30 p.m. OR — Tuesday, 27th April and 4th May — 7.30 p.m. to 9.30 p.m.

Note: When applying please indicate which training you will be attending. Applications, Stamped-addressed envelope and \$1.00 fee to be sent to Training Department, Guide Headquarters.

(Continued from Page 186.)

Mrs. H. C. Sargent, Murtoa; Mrs. B. Schubert, Warracknabeal; Mrs. G. G. Highett, Springvale South; Mrs. J. Illing, Eildon.

### Ranger Guiders

Mrs. M. W. Campbell, Doncaster West Rangers; Mrs. F. D. Rogash, Altona North Rangers; Mrs. M. Adnams, Sunraysia East Division Rangers (Illawong).

### Assistant Ranger Guider

Mrs. J. Hardie, Sunraysia East Division Rangers (Illawong).

### Guide Guiders

Miss S. L. Barry, 2nd East Malvern; Mrs. N. Carr, 4th Boronia; Miss B. J. Cartmel, 1st The Basin; Mrs. A. Bourbaud, 2nd Black Rock; Mrs. R. Terrell, 2nd Overport; Mrs. J. Keegan, 1st Nullawarre; Mrs. P. Henwood-White, 2nd Greensborough; Mrs. F. A. Quick, 1st East Doncaster; Miss A. M. Smith, 1st Box Hill; Mrs. A. F. Helyar, 1st Bannockburn; Mrs. E. Cooksey, 1st Hurstbridge; Mrs. J. J. Albers, 1st Warracknabeal; Mrs. M. A. Blackwood, 1A Mildura; Mrs. A. M. Turner, 3rd St. Kilda; Mrs. G. Tucker, 2nd Tatura; Mrs. B. L. McDonnell, 5th Wattle Park.

### Assistant Guide Guiders

Mrs. G. McCarthy, 2nd Central Doncaster; Miss S. McCall, 3rd Strathmore; Mrs. R. W. Woolnough, 2nd Rosebud; Mrs. G. E. Austin, 1st Morwell; Mrs. P. M. McKinnon, 1st Black Rock; Miss P. Firkins, 1st Black Rock; Miss J. Milligan, 1st Black Rock; Mrs. D. D. Scarlett, 2nd Rosebud; Mrs. E. J. O'Donnell, 2nd Rosebud; Mrs. A. J. Frew, 1st Coleraine; Mrs. P. J. Oldham, 1st Cohuna.

### Brownie Guiders

Mrs. N. G. Harding, 1st Central Doncaster; Mrs. J. Donaldson, 4th Central Doncaster; Mrs. O. A. Voigt, 1st Woorinen South; Mrs. M. Corkhill, 1st Diamond Creek; Mrs. B. Sedgman, 2nd Diamond Creek; Mrs. H. R. Earl, 2nd Werribee; Mrs. B. Harris, 2nd Black Rock; Mrs. R. J. Vaughan, 2nd Kyneton; Miss J. O'Shea, 2nd Overport; Mrs. R. Toye, 1st Caulfield; Mrs. E. Wohlgemuth, 1st Altona North; Mrs. R. Douglas, 1st Greensborough; Mrs. G. T. Minster, 3rd West Doncaster; Mrs. R. D. Leviston, 3rd Bairnsdale; Mrs. K. Broome, 1st Cann Valley; Mrs. P. Maskell, 2nd Tatura; Miss J. Cross, 1st Springfield; Mrs. W. Crompt, 1st Bairnsdale; Mrs. A. Portinari, 2nd East Brighton; Mrs. M. Cohen, 4th St. Kilda; Mrs. B. E. Shores, 1st Wattle Park.

### Assistant Brownie Guiders

Mrs. E. Malone, 1st Moe; Mrs. S. Mason, 4th Central Doncaster; Mrs. Y. D. Dagge, 1st Woorinen South; Mrs. J. Nagtzaam, 2nd North Cheltenham; Mrs. B. J. Pope, 1st Altona North; Mrs. W. A. Helmers, 1st Nowa Nowa; Mrs. I. R. Henderson, 2nd Tatura; Mrs. D. Errington, 3rd Bairnsdale; Mrs. F. Samuel, 1st Syndal.