

# MATILDA

GIRL GUIDES ASSOCIATION, VICTORIA





Reunions seem to be in the air at present. Read about two exciting ones on pages 233 and 238.

In this issue . . .	Page
Alpine Adventure	233
Asia/Pacific News	226
At Britannia Park	227
Conservation	238
50 Cents for 50 Years	221
Guide Shop	244
Local Association Section	235
Mini Olympics	240
National Development Project	225
News from Units	237, 238, 239, 241, 244
Notices	222, 224, 226, 234, 239, 244
Personnel Changes, etc.	243
Ranger Reunion	233
Reporting from Russell Street	220
State Commissioner's Letter	219
The Quest for Leaders	223
Training Calendar	242
Training Pages	229-232
Trefoil Notes	241
Victorian Guider Reserve	222
Waddow Hall	236

# MATILDA

PUBLISHED BY THE GIRL GUIDES ASSOCIATION OF VICTORIA  
20 RUSSELL STREET, MELBOURNE, VICTORIA, AUSTRALIA, 3000

State Commissioner: MRS. F. S. GRIMWADE

State Secretary: MISS M. W. BARR

Assistant State Commissioners: MRS. D. O. OLDFIELD

MRS. A. J. TURNBULL

Editor: MRS. L. I. RICHARDSON, 31 Hampshire Road, Forest Hill, 3131





## From our State Commissioner

Dear Everyone,

How very dry it is now. As I look over the front paddocks there seems to be little difference between the ploughed paddock and the others. Whilst all the farmers are eagerly waiting for rain, the weather has been truly perfect for outdoor activities. I do hope that you have all been making the most of the last of the nice weather by meeting outdoors as often as possible.

A very big thank you to all those who submitted designs for the "Get Moving" badge. The one we finally chose was designed by Felicity Turnbull, daughter of our Assistant State Commissioner. I hope that you have been working for this badge which is now on sale for 10 cents. I know many of you have been participating in trials for the Mini Olympics and I am sure that you have all had fun.

Our Ranger Re-Encounter, 1976, was a magnificent success. They came from near and far and it was fascinating to see the photographs and papers, and the way in which everyone settled into little groups with old friends they had not seen for years — and years — and years! At one stage there was a great queue to register and the babble of voices in the training room was incredible. Everyone I have spoken to felt the day was a great success.

We held a special meeting of State Council to further discuss amendments to the Constitution. We have now approved in principle the changes to the Constitution and it is at present being put into the correct legal language and will be presented to a special meeting later in the year.

The Lady Delacombe Golf Day has come around once again — and as usual was a great success. The Committee under the leadership of Mrs. Carlyon do a truly wonderful job in organising this day — and it is a day which golfers look forward to. As well as benefitting us financially, it brings many more people in contact with Guiding which is all for the good. Peg and I had a delicious luncheon at Metropolitan and enjoyed meeting everyone.

As soon as I had presented the trophies I left for Stawell to begin a country tour. I met Doris Carter and Barbara Kearney in Stawell and the following day we went to Murtoa for the Wimmera Region Conference. We all spent a very happy and enjoyable day — although rather cold. The theme of the Conference I feel should be the cry of many more adults — "Let's be in it too". I was so impressed with the Region's Keep Fit Demonstration, I awarded everyone a "Get Moving" badge on the understanding that they attempted two more challenges!

The next day I spent in Camperdown where I had lunch with Guiders, Commissioners and Local Association members in their very beautiful new hall — I am sure everyone is enjoying using it very much.

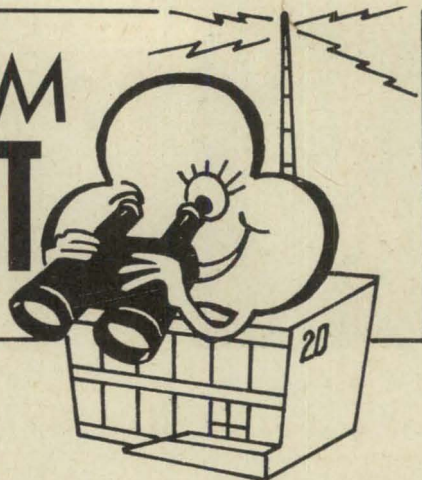
After a Civic Reception given by the Mayor of Camperdown I went to Simpson for their District Annual Meeting. What a wonderful night — vast numbers gathered in the newly opened Simpson Community Hall for a Casserole Tea — and we then had a very enjoyable meeting which included items from their four units. By the time the evening ended with supper I had managed to meet many parents and girls.

I had to return to Melbourne on the Thursday for Executive and a couple of non-Guiding days — one of which was spent feeding family and friends at the Head of the River!

(Continued on page 222)



# REPORTING FROM RUSSELL STREET



## GUIDER'S CONFERENCE

At last the date of the State Guiders' Conference, held every two years, has been confirmed. This Conference is to take place on Saturday, 9th October, 1976, from 10.00 a.m. to 5.00 p.m., at University High School, Story Street, Parkville. (near Melbourne University). Further information about this important event in the Guiding Calendar will appear in Matilda month by month but **note this date in your diary now.**

## BROWNIE GUIDE SECTION

There is now only **one** Mini Book — it is called "My Brownie Guide Mini Book" and is for the new recruit when she joins. It is essential that the new recruit has "The Australian Brownie Guide Book", "Australian Brownie Guide Interest Badge Book", and "My Brownie Guide Mini Book". These books are being sold separately at present to enable the children and the Leaders who already have an Interest Badge Book to purchase the new "Australian Brownie Guide Book".

The "Notes to Parents of Brownie Guides" is no longer available. The same information is on the last two pages of the new "My Brownie Guide Mini Book".

## AUSTRALIAN SCOUT JAMBOREE (30th December, 1976-7th January, 1977)

Further news — the cost for staff members will be \$48. The Guide Association has been asked to supply staff under the following headings:

- (a) Nursing staff — trained, semi-trained, and nursing aides — must be 18 years of age or over.
  - (b) Wardsmaids/Orderlies — 16 years of age or over.
  - (c) Secretarial — 16 years of age or over.
- (Note: Rangers in category (b) or (c) must be invested and have had some camping experience).

Application forms available from Secretary to Advisers on receipt of a **stamped self-addressed envelope**. Applications close Monday, 9th August. Selection day — Saturday, 14th August.

## HELP FOR GUATEMALA

Some of you will have read in the Press of the fearful earthquakes which caused great

damage and distress in Guatemala recently. If any Guides would like to help the Guides of Guatemala in the work they are doing to ease the burden of the people left homeless, we will be pleased to pass on donations. Please note the appeal will close at the end of June.

## COMMISSIONERS' OPEN DAY

Commissioners, have you registered on the fact that our Open Day for Commissioners and the Division Commissioners' Meeting is to "happen" on Tuesday, 20th July? Please let us have any programme requests you may have before the end of May and start organising yourselves to be free on that day.

## FROM THE CAMPING DEPARTMENT

**Reminder to C.A.'s and Recorders** — Remember? Your weekend is to be held 10th-11th July at Britannia Park. We hope to see you all there. Pink slips were to be returned by 1st May — please send them in.

## ANNUAL REPORTS

May is always a busy time for Guiders and Commissioners as there is the extra work of compiling Annual Reports. Please help the other people involved in the communication chain by getting your Report passed on either before or by the due date.

District Commissioners, please check that your Local Associations know that their membership fees should be sent through you — many are posting them directly to Headquarters and this will cause confusion locally.

## THE WEARING OF SPECIAL BADGES

After this year Brownies and Guides will wear only one special badge in uniform at any one time, but an exception is being made in 1976 to permit the wearing of both Get Moving and Irene Fairbairn Fund Badges. If Guides wish to wear both badges this year, the badges will be worn side by side on left breast. Brownies will wear the Irene Fairbairn Fund under the Venture Badge on left sleeve, Get Moving Badge above left cuff.



Girl Guides Association of Australia,  
7 Wilmot Street,  
Sydney, 2000

Dear Members,

50 Cents for 50 Years

We have just celebrated our fiftieth Thinking Day — and did you know that this year we are also celebrating the fiftieth anniversary of our Australian Association? (not our State Associations, of course, they date back almost to the beginning of Guiding, and are the rock on which our Australian Guiding is built). As you will know, we could not be members of the World Association if our States had not decided, right back in 1926, to form the Australian body — and we have every reason to be proud of the way in which, as an Australian Association, we have played our part in World Guiding.

As with all voluntary organizations, we have always with us the twin problems of the shortage of money and of adult leaders; it is with the first that I am now concerned, for, in order to lessen the burden of finance on the State Associations, we are trying this year to build up a capital fund for the Australian Association. We are hoping that both present and past members — perhaps especially past members — will value their Guiding to the extent of subscribing "fifty cents for fifty years" — could we look for your co-operation too?

Perhaps one way of interesting the younger members is by way of letting them know something of the work we, as an Association, have undertaken in Australia and the World field — in Australia the work with aboriginal girls and women, with girls in densely-populated areas and mining towns and with migrants; the Trainers we have sent abroad; the wonderful record of Guide International Service; the Conferences we have helped organize — so many ways of helping so many people, and so often unknown to our present members.

Any assistance you can give will be welcomed — later in the year we hope to be making an appeal to people who are, in the main, outside Guiding, and who will no doubt be greatly influenced by this practical example of self-help which shows our faith in the Movement.

Yours sincerely,

Mary Lambie.

Chief Commissioner.

20 Russell Street,  
Melbourne, 3000

Dear Everyone,

May I add my comments to those of our Chief Commissioner, Miss Mary Lambie, and through you, our Guiders and Commissioners, ask everyone to do what she can to support this Appeal for the Australian Association. Any donation, no matter how small, will be welcome.

Please send any contributions you are able to make to Victorian Headquarters. We regret we will not be able to mail receipts because of postage costs — you would not want those precious cents lost in stamps along the way, would you?

Victoria always responds most generously to requests for help and I am sure this Appeal will receive the good support I know we can expect.

With best wishes,

Joan E. Grimwade

State Commissioner



## VICTORIAN GUIDER RESERVE

Have you heard of the Guider Reserve Scheme? Established in 1975, it was devised for ex-Guides, Rangers, Guiders and Commissioners who, for reasons of study, occupation or profession, are unable to continue as regular members, but wish to give some active help to the Guide Movement from time to time.

The Reserve operates on a Division basis (Region, if preferred) with a Recorder appointed in each Division to keep a record of all Reserve members. The recorder is expected to keep in close contact with members and to be a liaison between them and the Division Commissioner.

The minimum age for joining the Reserve is 16 years and all members must have made the Guide Promise. Each person is expected to give service to the Movement in some capacity such as temporarily helping with a Unit, instructing or testing for badge work, helping at camps, rallies or field days, or talking to groups, etc., at least four times a year. If a prospective member has been out of active Guiding for five years or more, she is required to gain some up-to-date knowledge before being listed as a member. Guider uniform may be worn if desired and those who have been Ranger Guides may continue to wear Ranger uniform until they reach the upper age limit of the Ranger Section.

It is hoped that this Guider Reserve will provide a core of people who can fill a useful role intermittently when special help is needed. If you know anyone who would be interested in joining it, please pass news of it on to her and put her in touch with your Division Recorder. Who is that? That is a question for your Division or Region Commissioner.

## OTWAY REGION CONFERENCE

A Region Conference will be held at Glenormiston Agricultural College, Glenormiston, on Wednesday, 2nd June from 10.00 a.m. to 3.00 p.m. for Guiders, Commissioners and Local Association members. Theme — "Guiding the Rural Way". Visitors from other Regions welcome. Further information from Mrs. I. McConnell, "Raloo", Kalora, R.S.D. Terang.

## STATE COMMISSIONER'S LETTER

(Continued from page 219.)

The following day I went back through Geelong to Colac to their Golden Jubilee of Guiding which was a great day for everyone. St. Andrew's Church was packed for a wonderful Thanksgiving Service and then we had a picnic lunch and reunion at the Hall. Some of the "older girls" in the uniforms of the 1920's were hilarious and obviously were thrilled to meet old friends again. A very happy day concluded with supper with the Rangers at Burton's Campsite.

Just before I left to return to Melbourne on the Monday we called to see a Brownie Pack — to get a lovely surprise April Action and a Fancy Dress Parade — a perfect end to a very happy few days.

I do love getting out amongst you all and everyone is so wonderful wherever I go.

We were very sad to receive the resignation of our Training Adviser, Phyl Thiele, owing to ill health. Thank you Phyl, for all you have done for Training in Victoria and we all hope you will be fit again very soon.

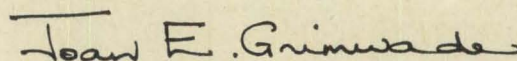
Soon after you read this I hope to be leaving for a trip overseas with Fred. Whilst this is primarily a trip to Member Countries of the Commonwealth Parliamentary Association where Fred will be studying legislation — also agriculture and tourism — it will also, at times, be a holiday.

I hope wherever possible to make contact with Guiding and see what is being done in other countries.

During my absence, Mrs. Oldfield, will be the Acting State Commissioner, and Mrs. Turnbull, the Chairman of State Executive. I know that everything will run very smoothly during my absence and you will all do whatever you can to help.

Whilst I shall not be writing to you over the next few months — I hope every so often we may have an "Absent Friend's" letter. I look forward to seeing many of you at the Mini Olympics about four days after I return!

With love and best wishes to you all for a happy second term,





# The Quest for Leaders

If there is any one factor retarding the full development of Guiding in many areas, it must surely be the difficulty of finding suitable leaders.

Too many girls waiting to enter Brownie Packs; too many Guides, 13 or 14, losing interest because one leader without help cannot adequately program for every Guide's needs; 15-year-olds leaving the Movement because there is no Ranger unit close enough for them to join; too many units going into recess when a leader transfers or resigns and there is no-one to take her place. We all well know the sad story.

We need to look at more positive ways of helping ourselves if leadership is a difficulty in your area — (happily, some Districts are more than adequately staffed) — perhaps some of the following ideas might work for you.

## Start with the girls

When our Movement started it was frequently the girls who found their own leaders. Have you tried that approach? Girls have families, families have older sisters and neighbours, one of whom might be very interested in a worthwhile job with children if someone asked her.

## Look at our past members

What happens to girls who have passed through our units? Do we bother to keep in touch with them? Do we ever invite them back for a special night, 2 or 3, 4 or 5 years later? Yes, they may have married and moved away but, from say 20 who were Guides between 1965 and 1970, one or two may like to come back as leaders if approached. Have you kept touch with previous Queen's Guides? Tertiary education completed, one of them may now like a job in Guiding.

And what of former Guiders? What about Mrs. J. who left to have a baby in 1970 — might she be willing to return now her babe has started school? Mrs. B. wanted a rest when she arrived from Brisbane in 1974, but maybe she is ready now to don that uniform again.

I know all about women joining the workforce (I too have a full time job) but

hundreds of the 3451 adults in Guide uniform last year kept the commitments in hand and I believe there are other women who would consider joining our ranks if we seek them.

## Look at other folk around us

Like the girls, we have neighbours, friends, fellow associates of golf and tennis clubs, co-employees, etc. Do we think of them as possible Guiders? Thought to invite them to one of your unit's special evenings to see the fun the girls have? Ever asked them for their help in a special field? The visit may spark interest leading to regular help. It does not have to be a uniformed job — unit helpers are a great strength in Guiding now and many have gone on to make the Promise.

Whether we like it or not, we live in an age of high pressure salesmanship. Newspaper, glossy magazine and television screen shriek the message, "Selling". Perhaps we are too shy and modest in this regard. If we need more Guiders surely we should make the fact known and appeal for help. Fear that we may attract the wrong people by so doing may be groundless and, with discretion and understanding, offered help can usually be acceptably directed. I have suffered enough television advertisements to realise the advertiser needs to present his product in an arresting way. Do we present Guiding as the wonderful thing it really is, or can be — a fun, fellowship, family concern? Our approach like the television advertisement needs to arouse a positive reaction.

Successful salesmanship depends on **CONVICTION** that your product is excellent and **ENTHUSIASM** to make the buyer enthusiastic too. Can we put aside our reticence and bring our conviction and enthusiasm into our quest for leaders?

Teamwork is another valued ingredient of Guiding — do we employ the team approach on the leader question? Whilst it is the Commissioners' responsibility to appoint Guiders (and inherent in the word "appoint" is the need to prepare all newcomers for the



job they will undertake), what about forming special recruiting teams to do some of that vital personal contact work. Former Guiders, Local Association members, Trefoil Guiders may be able and willing to help in this way, especially if they have friendly outgoing personalities.

In the quest for Leaders there is no substitute for personal contact and if you hope to succeed you must add effective follow-up. "Effective" follow-up means honesty as well as prompt action — we must present a true picture of what being a Leader or Unit Helper involves.

I found this statement recently —  
"A winner hopes for a miracle **after** everything else has failed;

A loser hopes for a miracle **before** anything has been tried,"

**When it comes to finding Leaders, which are you?**

— A.P.T.



### WANTED BY NEW SOUTH WALES

A FIELD GUIDER for Development work in Sydney's developing areas — to promote Guiding, find leaders and establish units.

### QUALIFICATIONS

- Knowledge of Guiding — preferably recent Guiding experience.
- Liking for speaking to people.
- Interest in youth and youth training.
- Organising ability.
- Good educational background.
- Experience in public speaking.
- Awareness of the value of Guiding, plus a desire to promote Guiding.
- Ability to work with a team.

**SALARY** — negotiable. Car allowance.

**APPLICATIONS** — confidential — in writing, to State Secretary, Girl Guides Association (N.S.W.), "Guide House", 201-203 Clarence Street, Sydney, 2000.

**Please state** — education particulars, employment history and experience, age and Guiding experience.

### A BIG THANK YOU

Dear Matilda,

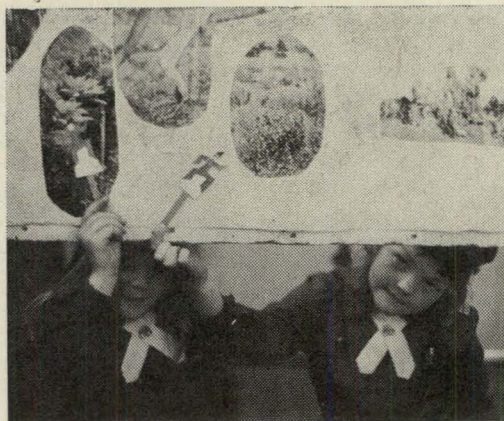
I would like to say thank you to all the Guiders and Brownie Guides who helped me when I was writing the "Australian Brownie Guide Book", particularly the previous Brownie Section Committee under their Adviser, Coralie Caple. Many Brownies helped by sending me drawings, and three packs — 3rd Springvale North, 2nd Balwyn and 1st Blackburn South helped the artists, Sadie and Suzanne Pascoe by posing for photographs which formed the basis of many important illustrations.

Thanks also to Miss Doris Carter, our Victorian Guide Shop, two Australian Brownie Section Advisers and Brownie Guiders all over Australia who sent in suggestions and criticisms.

1st Blackburn South Brownie Guides were the "guinea pigs" who tried out many of the new ideas in the book. One of the most enjoyable was making stick puppets and acting the Christmas Puppet Play at the end of the book (see photo).

Thank you again to all who were so willing to Lend a Hand.

JEAN HALEY.



(Photograph: Suzanne Pascoe)



There is something better than ability. It is the ability to recognise ability.



All men are equal. It's what they're equal to that counts.

MATILDA



# NATIONAL DEVELOPMENT PROJECT

Does the idea of working with girls in the inner suburbs appeal to you? If it does and you have a little spare time, we would be very pleased to have you join us — even for one term.

Following is a list of units where help is needed.

Monday, guides at Fitzroy from 11.30 a.m. to 12.30 p.m.

Monday, brownies at Fitzroy from 7.00 p.m. to 8.00 p.m.

Tuesday, brownies at Burnley from 3.30 p.m. to 5.00 p.m.

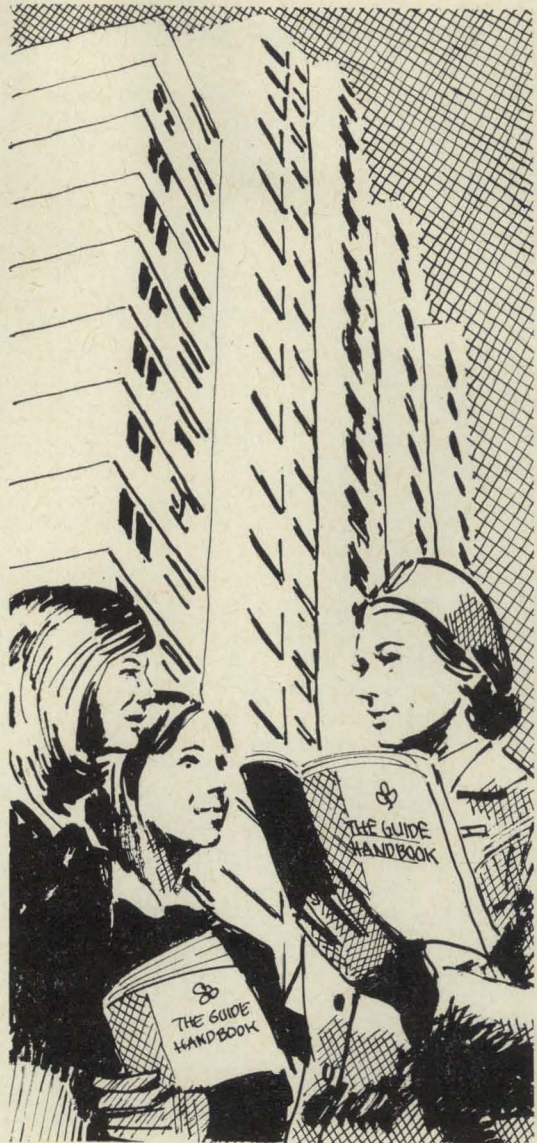
Wednesday, extension guides at Fitzroy from 1.15 p.m. to 2.15 p.m.

Thursday, brownies at Collingwood from 7.00 p.m. to 8.00 p.m.

Friday, brownies at North Fitzroy from 2.30 p.m. to 3.30 p.m.

Friday, guides at North Fitzroy from 2.30 p.m. to 3.30 p.m. (this unit's need is urgent, as the helper there is on leave for 2nd term).

If you can help, or would like to know more about our work, please contact Barbara Kearney, telephone 89 1221 or Ro Lawson, telephone 92 8742.



## Do you still need ideas to GET (you) MOVING?

- Fossick in the hills for gem-stones or gold. Start a rock collection.
- On a wet day leave the car out in the rain. Play hop-scotch or darts in the garage.
- Play leapfrog. It requires no equipment.
- Go bird watching. How many varieties can you find in your suburb?
- Get the old mattress out of the garage. Put it on the lawn for jumping and rolling on.
- Run instead of jog. Jog instead of walk. Walk instead of ride. Ride instead of drive.
- Visit the museum. By the time you have seen all the exhibits and Phar Lap, you will either be very fit or in the same condition as that world famous racehorse.
- Collect driftwood or shells. You may even find a bottle with a message in it. Take the family for a stroll around the Fun Track in the Botanic Gardens.



# RANGER SERVICE PROJECTS IN SRI LANKA

Ranger service projects are many in Sri Lanka and they take different forms. These service projects have been encouraged through challenges and trophies.

They were earlier held annually, but since they have gained popularity, at the request of the Rangers themselves we have had two service camps this year (1975) — one during the April vacation and the other during the August vacation.

The types of projects are varied. We have so far:

- (a) conducted socio-economic surveys,
- (b) built roads together with people in the rural areas,
- (c) taught rural girls food preservation and first aid,
- (d) introduced the use of waste materials,
- (e) instructed the villagers in health and sanitation, and child welfare,
- (f) built a netball court and taught the game,
- (g) built houses and latrines for the village,
- (h) taught sewing and handicraft,
- (i) started a library in one village,
- (j) instructed village girls and boys in recreation activities.

Apart from the work itself the evenings are devoted to cultural exchanges and displays of handicrafts which are presented in the form of competitions and challenges amongst the Rangers so that they get to know more about the different areas and people of our own country.

Our April project was carried out with workers on an estate having tea, rubber and coconuts.

The main project consisted of —

1. weeding on the rubber estate, working together with the labourers.
2. each Ranger, together with one village girl, sewing a garment for a child who was there, using only remnant material — the cutting out and completion of the garment to be done within a set time and the child to be dressed in the completed garment. This was in the form of a competition.
3. preparing beds for planting manioc for the junior school on the estate.

The Rangers enjoyed weeding although

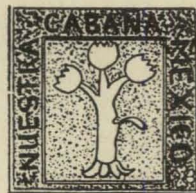
many of them ended with blisters on their hands. Each girl was asked to weed around at least five trees but we were surprised to find that some of them had weeded around twelve trees within a few hours.

The sewing competition was a great success, the judges and visitors were surprised at the very clever manner in which the Rangers had put the remnant materials together and the quality of the finished garments. The happiness and satisfaction of the competitors was to see the smiling faces of the little children who went back home wearing their new clothes.

The junior school on the estate had a plot of land that could be cultivated. Rangers prepared beds for manioc. The next day we paid the school children a surprise visit to give them a few gifts and were very happy to see the children already at work planting manioc.

Apart from the sewing competition we had two more competitions — an oratorical contest in Sinhala, Tamil and English, and a poster competition. The topic for the oratorical contest was "What can I as a Ranger do for my country?" The theme for the poster competition was "Outstanding Women of Sri Lanka — connected with the Girl Guide Laws".

(from Asia/Pacific Newsletter.)



## PROGRAM WORKSHOP

Are you looking for new program ideas? Do you have some ideas to share with others? **WHEN?** 23rd-30th November, 1976. **WHERE?** — Our Cabana, Mexico. Participants need to be at least 18 years of age, be a registered member of the Association, with **active** interest.

For further information and application, **WRITE NOW BY REGISTERED AIRMAIL** to: Miss Maria Laura Avina, Our Cabana, Apartado Postal 406, Cuernavaca, Morelos, Mexico.





Dear Commissioners, Guiders and Guides,

Fortunately the friendliness and co-operation existing between guiders and the warden at Britannia Park, Mr. Fraser and his wife, far outweigh the rudeness and discourteous behaviour to which they are sometimes subjected. Guiders even behave rudely to each other, and some go out of their way to make things difficult for others.

What has happened to the basic principles of Guiding? Are we more interested in the quantity than the quality of Guiding? Some say a main problem of the Western World is that we worry about the Standard of Living to the detriment of the Quality of Life.

I overheard two young guides as they walked to the canteen. On seeing Mr. Fraser, one called out a friendly greeting. He answered her with a friendly remark about camp. When the second guide reminded her friend that "Captain" had told them not to talk to men, the friendly girl replied that Mr. Fraser was a friend and certainly not a stranger.

Can we in Guiding become a little more friendly to one another and to all with whom we come in contact? If this appears impossible sometimes, let us at least be tolerant in a pleasant way, and have concern for other people's feelings.

Not so long ago, a country guider was at Britannia Park for the first time — her guides were thrilled. They had their Guides' Own in the out-door chapel and returning to their campsite they walked across another company's site. They were dealt with rudely and severely by this group. Previously elated, the country girls turned into very unhappy, squashed guides and do not want to come back to Britannia Park if that is the way they can expect to be treated by sister guides. Certainly, it is not correct to walk through another company's campsite — you

do not walk through someone else's home unless invited — but a little tact and general friendliness would have helped here.

Friendliness is more often evident as is proved by the many Thankyou cards and letters sent from girls and leaders to Mr. and Mrs. Fraser, but this ugliness in Guiding is seen occasionally and we all need to guard against it.

If on arrival at Britannia Park, the Guider in Charge of a camp, indoor or outdoor, has the courtesy to make herself known to Mr. Fraser, he will assist her and the girls if and when they require his help. If Britannia Park is not too crowded, Mr. Fraser permits Guider in Charge and Q.M. to drive to their site — with instructions to stay on the road, unload equipment and return cars to the car park. Imagine his feelings when some guiders not only fail to take cars back to the car park, but even drive over the grass sites. When asked why they have not done as requested, some guiders are extremely rude.

Fire Officer at Yarra Junction has warned us to keep the Park clear of cars — they must be in the car park. Thankyou Chalet residents may have a car parked near the back door.

We all like having visitors, but did you know that most damage at Britannia Park is done on Visitors' days. Mother and Father set out from the car park to find their daughter's camp and sometimes leave their other children unsupervised. Making their own fun (?) these children often delight in throwing rocks and bottles into the swimming pool. This breaks Mr. Fraser's heart and causes him many hours of unnecessary work. Please see if you can help us get over this problem.

The Committee welcomes constructive criticism. Before you race for pen and paper,

(continued on page 228)





Dear Matilda,

I **must** write a Region Training Adviser's point of view of our recent Stage 1 training at Pyramid Hill.

Applications came in slowly (as usual) for a start and then — **WHAM!**

When I had 12 I started to send out acceptances. When I got to 30 I started returning forms and apologies. I finished up with **53** applications — an all time record (for me) and, joy of joys, **almost** all came with fees and stamped, addressed envelopes. What a lot of work and expense that saves a Region Training Adviser.

The Local Association members at Pyramid Hill are just terrific with their efforts

and work, as is their District Commissioner, in providing lunch, morning and afternoon teas, etc., in fact, doing whatever I ask of them without the slightest grumble.

This was the first "one-weekend-only" training and seems to have been appreciated by all. I have received very appreciative letters from guiders who participated.

A word of advice to guiders. If **YOU** want to join in the fun, get your application in early. That way you will not be on the waiting list next time.

Yours sincerely,

VI WILKINS,

Training Adviser, North Central Region.

(continued from page 227)

let me tell you that in the next few months we hope to put new linoleum where needed, in bathrooms and kitchens, new carpets or runners where these have worn, to paint inside the houses, starting with the worst rooms first. We hope to make structural alteration to Brownie Cottage entrance to give brownies in the first small bunk room access to the internal bathroom and to order replacement crockery to cover breakages. Glendenning Hut has drainage problems and we hope to reconstruct the ugly approach and get rid of the high bank which is treacherous in wet weather.

Did you know we share our Park with others? Children of nearby residents and other youth groups, suitably supervised, are allowed to swim in the Pool when brownies and guides are not using it. This has benefits for both parties. Regular movement of the water assists filtering and use of that part of the property during daylight hours deters unwanted use of car park area. We also encourage others to use House and Cottage during the week — school groups etc. — however, they must have the required num-

ber of adults for supervision and each request is dealt with individually through Headquarters.

Remember, this is your property — if you or your girls notice anything amiss and can remedy it, please do so or report it to Mr. Fraser for his attention.

I would like to see Britannia Park used more and invite suggestions from guiders and friends of the movement. Some weekends, during beautiful weather, we may have camps on only a few of our seventeen lovely sites. And even when weather is expected to be "not so good", the Park should be full of happy, busy girls — learning the art of living — using talents to overcome challenges that out-of-door living can suddenly spring upon them.

What stops you getting your girls to camp? We would like to know. We may be able to assist you. Various reasons and new ideas spring to my mind — what about some of yours!

MARGARET TUCKER,  
Convenor,  
Britannia Park Committee.





---

# TRAINING PAGES

---

## THE WAY of GUIDING

### How it Began

Many leaders are using their leader's workbook with enthusiasm, and are exploring books and publications for information.

Cupboards are being cleaned out and District Meetings are becoming resource and exchange centres.

A book which could be used for reading and reference on the work and life of Lord Baden-Powell is "B.P.'s Outlook". Has your District discovered a copy yet?

The following extract from this book appeared in "Matilda" in November, 1969.



#### THE ORIGIN OF SCOUTING FOR BOYS

The other inventors of Scouting invariably give dates on which they hit on the idea, so it may be interesting to some who are not already aware of the origin of our scheme if I give a few facts about our Boy Scouts.

The first idea of such training came to me a very long time ago when training soldiers. When I was adjutant of my regiment in 1883 I wrote my first handbook on training soldiers by means which were attractive to them, developing their character for campaigning as much as their drill ability. This was followed by another, and yet a third in 1898. This latter "Aids to Scouting", came somehow to be used in a good many schools and by captains of Boys' Brigades and other organisations for boys in spite of the fact that it had been written entirely for soldiers. I therefore re-wrote it for developing character in boys by attractions which appealed more directly to them.

The uniform, in every detail, was taken from a sketch of myself in the kit which I wore in South Africa in 1887 and 1896 and in Kashmir in 1897. Our badge was taken from the "North Point", used on maps for orienting them with the north. It was sanctioned for use for trained Scouts in the Army in 1898.

Our motto, "Be Prepared", was the motto of the South African Constabulary, in which I served.

Many of our ideas were taken from the customs of the Zulus, Red Indians, Japanese, the code of the Knights of the Middle Ages and many were cribbed from other people and some were of my own invention!

BADEN-POWELL, January, 1914.



## THE LEFT HAND SHAKE

This traditional Scouting and Guiding sign of friendship is used by members of both Movements in all countries where custom accepts a handshake as a form of greeting.

Robert Baden-Powell told many yarns to his contemporaries and to the boys and girls who were in Scouting and Guiding during his life time. As often, with stories which are passed from one to another by word of mouth, they are embellished or changed slightly according to the whims of the teller. So if research is done on the origin of the left hand shake, various versions will be discovered.

The following was published in "Matilda" in October, 1970, as a reprint from the "Waratah".

The Left Hand Shake by Lady Baden-Powell.

"Truth is stranger than fiction".

In the article Lady Baden-Powell gives two versions of the story; she writes:

"In a superb book, entitled 'The Left Handshake', published by Collins in 1949 for the British Boy Scout Association, Lord Rowallan, the then Chief Scout, wrote in his Foreword:

"When Colonel Baden-Powell entered the capital city of the Ashanti People in 1896, he was met by one of the Chiefs, who came to him holding out his left hand. B.P. held out his right in return, but the Chief said, 'No, in my country the bravest of the brave shake with the left hand'. So began the 'left hand shake' of the World-wide brotherhood of Scouts'.

"Then Lord Rowallan quoted what he had heard and here now is what I heard and remembered from years gone by when my husband told me of his experiences. And I give this story to you now from my own memory.



"When my husband was in West Africa on that campaign in 1895-96 he heard of the legend of two tribes who lived next door to one another and were always having trouble and even wars between them. This was very bad and disastrous for both, with cattle thieving and so on.

"Then the very fine Chief of one of them realising how wrong it was, gathered his councillors together and they then decided not to have fighting again, but to try to come to terms with their warrior neighbours.

"So when, after a time, the enemy came advancing towards them expecting them also to advance and start fighting, this good army stood still instead of advancing to attack back.

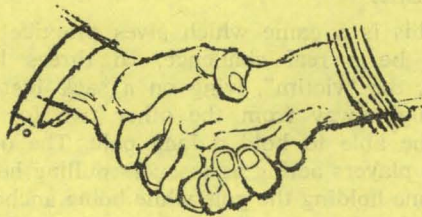
"There was a code of honour which said that an un-armed man who could not defend himself was never attacked, so this good chief of the peace-loving tribe dropped his arms and walked slowly out ahead of his men and after standing alone for a moment walked towards the enemy (who had stopped with surprise at this unexpected turn of events) and, holding out his left hand after flinging down his shield and spears, said:

### MISSING FROM TRAINING DEPARTMENT LIBRARY

"Two Lives of a Hero" — Do **YOU** have our book in your collection — Please check your library shelves — no questions will be asked for the safe return of this book. Is there anyone willing to lend or even give the Training Department a copy of "Two Lives of a Hero"? This book (and many others on B.P.) are in constant demand with Guiders who are doing the B.P. Badge. If such a kind and generous person exists would she please ring the Training Department.



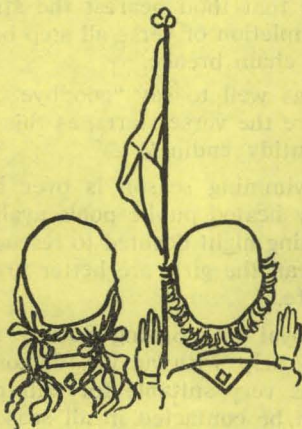
"I come unarmed and I hold out my left hand to you as a sign of friendship and trust. We are neighbours and should not live in enmity. From now on we wish to live in peace and we trust you to do the same and to be friends."



"Well, all those years later, when my husband founded the Boy Scouts he knew that boys and girls like secret signs and so he suggested that we should have and use this 'secret sign' of shaking hands differently from the ordinary way. As we all in our Movement truly trust each other, this method of our own of shaking with the left hand instead of the right, would be used throughout the movement. The left hand is nearer to the heart."

"Whether it is true or not, I for one know that the friendship part of it is as true for our Movement as it was for those tribes of long ago; and please God it will always remain part of the backdrop and essence of Scouting and Guiding".

LADY BADEN-POWELL.



---

---

## DISTRICT MEETING "DISCUSSION TIME"

Does this item appear on your agenda? This regular opportunity to talk and share with others is vitally important to leaders working with the girls.

With the growing use of the Leaders' Workbook time could be well spent exploring certain sections of this Australian Publication.

For the next five months this spot in the Training Pages will be suggesting topics which you may wish to use to spark off an exchange of knowledge, views and ideas at your District Meetings.

Do not forget to include time for it on your Agenda.

---

---



Except for articles where copyright restrictions are indicated, material in "Matilda" may be reprinted in Guide and Scout magazines without prior permission. A credit line would however be appreciated.



## BE PREPARED TO SAVE A LIFE



The swimming season is over and we are prone to forget those tragic drownings which mar our summer every year.

Perhaps the winter term's program could contain activities when all learn and practice some "non contact" rescue techniques. They can be great fun in game form, while providing the girls with understanding and knowledge to save a life.

**SUPPORT** action is not a complete rescue, but if the victim is able to hold onto an object which will keep him floating you have a far greater chance to organise the rescue. A ball, a floating board, a large plastic bottle, a bucket or an upturned saucepan will provide a measure of support. All activities which encourage accurate throwing over a distance will develop this skill — use basket balls, large plastic bottles and even plastic buckets so practice is given in throwing unusual shaped objects.

**LIFE LINE.** To save a life with a rope requires knowledge and practice. A vital point to remember is to securely anchor one end of the rope before throwing it, for a rope without your aid is useless. A tree, a post or a boat rowlock (if you are boating), another person, or even around yourself provided you are sure you will not be pulled in too.

Activities which could be included in a program include a relay in teams with the rescuers at one end of the room and the patient on a sack some distance down the hall. Throw the line to her and pull her in — gradually increase the distance down the hall as the life line throwers gain precision and confidence. Rangers could try throwing from a sitting position. For a quick patrol challenge — see which group using belts, coats, towels and any other available articles can rescue a victim six metres away.

**POLE.** When using a firm object such as a stick, tent pole, branch or broom for a rescue always lie down yourself. Remember a girl could be pulled off the edge by a struggling adult, so encourage the girls to be realistic.

This is a game which gives practice and can be a real challenge. In threes have one, the "victim", lying on a sack just far enough away from the other two for her to be able to hold a long pole. The other two players acting as rescuers pulling her in — one holding the pole while being anchored by the feet by the 3rd member of the group.

**HUMAN CHAIN.** There should always be an aid, such as a stick, between the "victim" and the rescuer in this type of rescue, and the chain should not go into the water beyond standing depth. The hand grip is vitally important, so practise the monkey grip, holding the wrist of the next person, so having a double hand grip.

An activity which involves the whole team is to form a chain out across the room and practise pulling in the "victim" who is holding a stick between her and the leader of the line.

Do you know "The Chain"?

It is often used as a closing for unit meetings. Everyone forms a circle using a firm monkey grip. Together all say:

"By the strength of each link in the cable,  
Dependeth the might of the chain,  
Who knows when thou mayest be tested,  
So live that thou bearest the strain".

On completion of verse all step backwards until the chain breaks.

(It is as well to say "goodbye" to everyone before the verse starts, as this can be a rather untidy ending!)

The swimming season is over but there are many heated public pools available and a swimming night devoted to rescue practice could mean the girls are better prepared to save a life.

The Royal Life Saving Society is always ready to help with advice, demonstrations and films very suitable for unit programs. They can be contacted in all seasons.



## "RE-ENCOUNTER 1976" RANGER REUNION

They came from everywhere — Ballarat, Drouin, Clunes, Inverloch, Seymour, Yalourn, Molesworth, Warrnambool, Moe and from all over Melbourne. One ex-Ranger (invested in 1935) even came down from Moama, N.S.W., especially for the occasion! And what an occasion it turned out to be!

It commenced at 10.30 a.m. and went on until 4.30 p.m. The downstairs Training Room at Headquarters reverberated with noise as old friends greeted one another and exchanged news and reminiscences. Large Headquarters' photographs from the archives were displayed around the room and of course old photograph albums and log books were in profusion. Headquarters Lounge was transformed into a creche as many "new arrivals" were brought in to be shown with pride by mothers and aunts to old friends.

Six present-day Rangers and three Guiders worked non-stop making lunch of sandwiches and fruit salad and cream for 120 people, and needless to say, cups of tea and coffee were consumed from 10.30 a.m. until 4.30 p.m.! After lunch, another deluge of ex-Rangers arrived and the noise grew to a deafening crescendo!

A "count-down" was held starting at 1971 to see who was the oldest Ranger present (being judged on investiture date). We got down to one who was invested in 1929, two in 1928, one in 1927, two in 1926 and at the end — Mrs. Kay Woollacott (Ex-Victorian Ranger Adviser) who was invested in England in 1922! There were **five** ex-Rangers present from Caulfield Unit who were **all** invested on the **same day** in 1939!

In all, 230 ex-Rangers signed our Visitors' Book. It was an **exciting** day!

(From Kuringal.)



## ALPINE ADVENTURE (PART 2)

Saturday was a FREE day. Some rested, but seven of us (with only day packs) walked 21 miles that day, along the ridge to the summit of Feathertop (6307 feet), second highest mountain in Victoria, we detoured two miles to visit the igloo-shaped aluminium hut built by the Melbourne University Mountaineering Club on another peak and returned in time for dinner at 7 p.m. Great repacking of food and gear that night. (We had carried 7 days food with us and sent two days supplies to Hotham beforehand.)

On Sunday, a total fire ban day, we breakfasted at seven and were on the track to Mt. Lock by eight. We passed the cairn and the hut built to the memory of Charles Derrick who tried to ski from Bogong to Hotham in **one** day, and died in a blizzard when almost to Hotham. Our route covered his tracks for the next three days. A steep climb down Swindlers Spur to Dibbins Hut — an ancient cattleman's hut, but welcome refuge to lost skiers or weatherbound hikers. A steep climb up to Cobungra Gap with a splendid view of Hotham from the top. About midday we emerged onto the High Plains and left behind us the welcome shade of trees. For the next three hours we walked under blazing sun, across grassy plains following the snowpole line around Mt. Jim. That night we stayed at the Rover Lodge on Bogong High Plains, and arrived just as a fierce hailstorm began. This shows the temperament of the mountain country — At 3.30 p.m. we were looking for shade, and at 4.30 p.m. a few miles further on, a hailstorm assailed us. We were glad of solid shelter in the storm, and enjoyed dinner cooked on a big old fuel stove, and bunks or mattresses on the floor.

On Monday we followed the aqueduct from the Rover Lodge to Langford's Gap and headed north for Mt. Nelse. At this point one of the Guiders left us because of tendon and cartilage trouble and made her way to Ta-wonga where she stayed with the Guide Leader till we finished the walk. From the top of Mt. Nelse (fourth highest mountain in Victoria), surrounding valleys filled with white fluffy clouds, the peaks seemed to stand out like islands. In the distance we saw a patch of white which we could not identify. On closer



inspection it became a snowdrift left over from winter, and we could not resist sliding over it on groundsheets. We passed another cattleman's hut called Ropers and, as always, signed the visitors' book. In drizzling rain we camped that night at Big River, after a precipitous 2 hour descent and hazardous river crossing. It took more than two hours steady climbing on Tuesday morning to reach the T spur knob. We passed Maddisons Hut, better known as Aertex because of more than adequate ventilation, and a mile further we reached Cleve Cole Hut, home of Bogong Ski Club, for lunch. Only 120 snowpoles to the summit of Bogong! As we climbed higher mist swirled around us, and by the time we perched on the rocky cairn that marks the summit of Bogong, we could only see 100 yards around us. Very disappointing! But still — we can always come back and start at this end! Packs on again, we descended Eskdale Spur for about two miles to the Michell Refuge Hut. We were intrigued to find a ten foot pole by the door with a spade at the top — out of our reach. The sign on the top said, "To find the door, dig two feet six inches North of this pole". This is just one of many welcome refuges for skiers in winter, and as the notice indicates the hut could be entirely covered with snow. Our last night in camp. In a way, it seemed a pity it had to end. It was great fun.

On Wednesday, we packed for the last time and continued down Eksdale Spur to Mountain Creek Road. Seven miles to go and we hardly stopped to rest. Our bus driver was waiting at the appointed spot. We washed, lunched, and journeyed home to arrive back at Guide Headquarters at about 7 p.m. It had been quite a challenge!

SHIRLEY HOPWOOD.

### RANGER SERVICE CAMP . . .

During the school holidays Rangers will be taking children from Fitzroy high rise flats for a bush holiday at the Scout Camp "Yabamac" at Wondong.

### VICTORIAN RANGER CONFERENCE . . .

Will be held at C.M.S. Centre, Belgrave South, weekend 18th to 20th June. All Rangers welcome.

### VICTORIAN RANGER WEEK . . .

The week commences with the Ranger Ball at Malvern Town Hall on 9th July and concludes with the Ranger Guider's Conference on 17th July.

During the week all Ranger units will be making a special effort to let Brownies, Guides, Commissioners, Local Associations and the community know something about Rangering . . .

### RANGER DEBUTANTE BALL

Date — 9th July, 1976.

Theme — Roaring Twenties.

Fancy Dress — Twenties Era.

Venue — Malvern Town Hall.

Price — \$20.00 Double.

Tickets and further information from Miss E. Thatcher, 5 Banole Avenue, East Prahran. (Telephone: 51 3736.)

### "THE GET GOING"

### RANGER GUIDERS CONFERENCE

Date . . . 17th July, 1976.

Time . . . 9.00 a.m. to 4.30 p.m.

Place . . . Girl Guide Headquarters, 20 Russell Street, Melbourne.

Guiders, do not let your Rangers down: come to your Conference and talk, discuss, listen and re-generate your enthusiasm, make new friends and meet old ones.

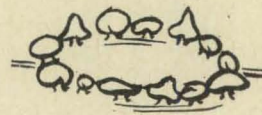
Application forms in April Ranger Circular.

### CALLING ALL CAMP FIRE ENTHUSIASTS

Join the Guider's Camp Fire Club!  
Guiders, come to our meetings to learn new songs, games and activities; enjoy Guide fun and fellowship.

You do not have to be a singer but we expect you to be a trier — so, "Give it a Go".

Meetings at Headquarters, 8.00 p.m. to 9.30 p.m. on 10th June, 8th July, 5th August, 9th September, 14th October, 11th November. (Wear Camp Uniform.)





# LOCAL



# ASSOCIATION SECTION

## THOUGHT FOR THE MONTH

Friends are like flowers — we just can not have too many.

## Urgent! Urgent!

Training Department is desperately in need of willing helpers to serve tea and coffee to Trainers and Trainee Guiders during weekend courses at Guide Headquarters. If you are able to help or have any members or friends available on Saturdays or Sundays, please contact Training Department as soon as possible.

## Hive of Activity

Next activity planned by Kooweerup Local Association is a Golf Day to be held on Thursday, 27th May at Lang Lang Golf Course on the South Gippsland Highway. It is an Open Day for men and women, non-members having to pay green fees. Local service organisations, business people and interested members of the community are generously donating trophies for the occasion, and Local Association members are having a cake stall to help swell their funds.

Members of the Guide Movement who are golfing enthusiasts are very welcome to join Kooweerup Local Association members on this day. Those interested please contact Mrs. Barbara Leeson, 54 Henry Street, Kooweerup, 3981.

## “Camp Uralba”

May I, as a Mother and also a Local Association member, say “congratulations” for the great organisation of the camp. For so many girls to be despatched so smoothly from Olympic Park, had to be seen to be believed.

Congratulations to all concerned,  
MARGARET MURPHY, Bendigo.

## Conference Questions

Here are a few more questions and answers from the Local Association Conference.

Q: Why cannot all Queen's Guides be presented with a metal badge as were earlier Queen's Guides? These badges can then be worn to Guide functions and also on the uniform of those girls who eventually become Guiders.

A: It was an Australian decision about three years ago, that only girls who went to Rangers could wear the metal Queen's Guide Badge. These girls who later become Guiders cannot wear this Badge on their Guider's uniforms, as it is a badge earned by a Guide in the Guide Section. However, this question is being discussed again by all States and as soon as a decision is made, it will be made known.

Q: Should a Guide be prevented from completing her Queen's Guide by her Guider whose personality clashes with the Guide? Should the Guider have the right to prevent the Patrol Leaders' Council meeting discussing and recommending that the Guide complete her Queen's Guide Badge?

A: It seems there could be a problem within the Unit. The District Commissioner should be contacted and should keep in close touch with this Unit and try to sort this problem out. It is well within the District Commissioner's role to attend the Patrol Leaders' Council meeting and take the chair at that meeting when the girls themselves would be putting their point of view as to whether or not to recommend this girl to complete her Queen's Guide Badge.

Q: Is the Association eligible for tax exemption from wholesalers for stationery?

A: No. Neither the Scout Association nor the Guides have exemption from Sales Tax, as we do not qualify under the particular Act that covers it. We have applied several times as a State, and the Australian Association has also, but the answer has always been “no”.



Q: Can any of the days spent at a State Camp such as the one in January be counted for the Camper's Badge?

A: Yes, the nights at the State Camp can be counted, but it would be necessary to attend a company camp to make sure the Guide knows things not learnt at the State Camp. At least one night under canvas would be necessary.

Q: In an area where so few mothers attend Local Association meetings, could Guiders who are also mothers of Guides and Brownies (in our case six Guiders) be able to attend Local Association meetings?

A: Guiders are usually discouraged from attending Local Association meetings. If they are running their Units properly, their time should be fully occupied with their weekly Unit meeting, preparation, District meetings and trainings. The District Commissioner is the liaison between the Guiders and the Local Association and as such takes news from one to the other of what is going on in her District. The Local Association can always invite Guiders to a special function to get to know them better.

## RECIPE CORNER

### Champagne Crust

1 large cup S.R. flour, ½ cup sugar, 1 egg, ½ cup milk, ¼ lb. butter. Mix flour and sugar, add beaten egg and milk together, then melted butter. Pour over hot stewed fruit in ovenproof dish and bake ½ hour in moderate oven. Sprinkle lightly with castor sugar and serve with cream or ice cream.

\* \* \*

Please send articles for this section to Mrs. D. O. Oldfield, 4 Embling Road, Malvern, 3144.

## MIRRABOOKA

Barwon Region Girl Guide Holiday home, "Mirrabooka" is available to Brownies for Pack Holiday and Guides for Indoor holidays. Units in Barwon Region may book six months in advance, and other units, four months in advance.

Current fee is \$1.00 per person per night.

For bookings and further information, please contact Mrs. Joan Miles, 12 Gibb Street, Newcomb, 3219 (telephone 21 2786).

★ ★ ★

Your word is more valuable than your money.

## NEWS FROM WADDOW HALL

Dear Matilda,

The following is part of a letter I received from Miss Desma Cohen, an ex-Western Australian guider, who is now guider-in-charge of Waddow Hall, the training centre in Lancashire in the north of England.

As are Foxlease in Hampshire, Nethurud in Scotland and Broneir in Wales, Waddow Hall is often visited by Australian guiders travelling overseas.

VENIE HARRISON.

"It has been a very busy year. Trainings have been full and in the summer the longer spells of residence have been popular.

The big event of the year — the completion and official opening in July by the U.K. Chief Commissioner, of the new extension to give us a larger dining room. The old dining room makes a much needed training room.

The whole project was made possible by the generosity and hard work on the part of a large number of members of the Movement (some of you included) and a grant from the Max Rayne Fund — a Trust set up to finance worthwhile projects.

As a Schedule 1 Building (of historical interest), alterations were not simple. Some of it dates back to the 13th century.

The other big event was an Autumn Fair. It was planned to raise money for the Building Fund. It rained from early morning until late at night and everywhere was a quagmire. Consequently the 2000 plus, people who came, crammed into the house, where some of the stalls were, or into the marquee and hut where tea was. All our polished boards and stairs, carpets and everywhere were awash! We visualised the new carpets being ruined. However, except for the polished areas, the rest was soon restored by the team of workers who had stayed overnight to help. With all those people crammed into the Hall, the heat of their bodies, added to the hot air rising from the Scout and Guide Band's instruments — they were playing on the front staircase — set off the heat detectors and fire alarms! But no one bothered! It would have been ghastly if there really had been a fire.

The year has seen a number of Australian visitors either here or in London, and this has been very nice for me, of course."

Miss D. COHEN.



## GRAMPIANS CAMP

Dear Matilda,

Recently we held a combined camp with scouts at Jimmies Creek in the Grampians. This is the first camp we have had with the scouts. It was a great success and a good time was had by all.

We all arrived in separate cars and set up tents in about five seconds flat! One of the girls with us was a Rotary Exchange student from Germany. She was a great help at camp and learnt our ways very quickly.

We all went swimming in the creek, but although the weather was hot the water certainly was not. The scouts showed us how to build a Flying Fox over the creek. We managed to pluck up enough courage to have a go. Fortunately it was quite secure and no-one got wet, but a few of us finished with a "splat" on the bank on the other side.

The scouts built a gigantic campfire and we all sang and watched plays based on aboriginal legends, performed by some members of our company and the scouts. The best was the story of the toad which was so thirsty he drank the world's water supply.

On the last day we did orienteering. There was treasure at the end of the trail. The treasure was a heap of "Minties" which the winners shared with us all.

We came home convinced that Guides are the best cooks in the world!

MANDY O'FLAHERTY,  
1st Mortlake Guide Company.



## MARYVALE DISTRICT NEWS

Maryvale District Guide, Joy Lampard, reached the high spot of her guiding career, when she was presented with her Queen's Guide badge at a ceremony planned by her own patrol. Guests included both Joy's grandmas, who had travelled from Port Fairy and Casterton.

The program included campfire singing and items.

Each member of the patrol in turn told of part of Joy's history in guides and the tasks she performed to qualify for her Queen's Guide badge.

Maryvale Commissioner, Mrs. J. Woolley, presented Joy with her badge and Mrs. Van Gulic, her leader, presented Joy with a cloth signed by all attending the ceremony.

★ ★ ★

2nd Maryvale Guide Company went to camp at a property in Boolarra named "Laughing Waters". The name of our camp was "Proberen" a dutch name meaning enterprise.

We participated in many activities, including a peanut trail, a water fight, horse riding, hiking, bridge building and black-berrying.

The weather was fine except for the last day when it rained. Everything got soaked including us and we were very glad to get home to hot baths and dry clothes.

Everybody enjoyed the camp very much and we all hope to attend another soon.

★ ★ ★

Thinking Day Mini-Olympics commenced with a parade of all guiding personnel around a symbol of the Guide Trefoil, each person placing her coin contribution upon it.

The day's fun included a three-legged race, an obstacle course, discus throwing, an egg and spoon race and a shot putt exercise. All placegetters were presented with medals fashioned from life-savers on cords.

Local Association members not only attended but provided welcome drinks after all the fun.

MARY BROWNE,  
Publicity Secretary.

★ ★ ★

Good judgement comes from experience;  
experience comes from bad judgement.



## JO BRUSHTAIL RETURNS

The day had been a sizzler and in order to find some relief we elected to sleep outdoors and our "boudoir" of groundsheets and sleeping bags was soon arranged in the garden.

Lying under the stars, with the lullaby of the hum of distant highway traffic, we were soon aware of an assortment of odd rustles and rumbles from nearby trees.

Soon the culprit appeared . . . a very large and beautiful brush tail possum who sat unconcernedly munching ripened plums as we stared in disbelief. For this was no ordinary possum . . . this was a very SPECIAL possum and we were thrilled to have her home.

Nineteen months earlier we had released Jo Brushtail and her pouched infant after several weeks careful nursing following their involvement with a truck on the highway.

Now, after all those months, here she was back again, and on many nights we have watched her and the now grown infant as they clamber about our garden trees.

As an experiment, we replaced her release runway — a length of board from window sill to gum tree and to our delight, her nightly visits bring her along the board onto the verandah and into the house.

Her earlier visits were in darkness, but now to the utter joy of the family she climbs right inside onto the television set, and our viewing is interrupted while Jo retrieves bread and fruit we have left for her.

Tonight is no exception and as I write, I can hear her moving about in the shed, preparing with grunts and mumbles to move off to the fence for the first leg of her nightly trek into the human habitations she has come to know and trust.

ANNE L. FRASER.



The smallest good deed is better than the grandest intention.

## GOIN' FISHIN'

"Let's go fishing" was the suggestion made at Patrol Leader Council. With fishing rods, hand lines and bait of all kinds we set off during our evening meeting to fish in the Murray River just below the Yarrowonga Weir. Dads had been invited to help thread worms on hooks and had just as much fun as we did.

Prize catch of the night was a four pound black bream by an excited guide.

The thrill of catching a first fish far out-weighed the fact that mainly carp were landed. However, we all felt we were doing our part in the conservation of our beautiful river by removing and burying the carp which have become a pest in Victoria.

Reluctantly we wound our lines in as darkness fell and voted it a company meeting with a difference.

JOAN ALFORD,  
Guider, 2nd Yarrowonga Company.



## MY NIGHT OUT AT CAMPERDOWN

There were 29 Guides filling the new Camperdown hall, each room and corner being occupied by pans frying and pots bubbling. It was a "cooking night" and each patrol was producing a specialty.

Sudden scream from the kitchen that the stove was on fire gave Guider an opportunity for some training on fire fighting and the girls a chance to try home-making skills at oven cleaning.

When eating time came I was sorry my hostess had fed me so well. I sampled everything — pancakes, stew, banana and cauliflower fritters and green cordial.

My one regret is that I will not be at Camperdown for the next meeting which is a record night.

Thanks Camperdown.

YVONNE JAMES,  
Guide Adviser.



## NEW UNITS IN ST. KILDA

Early last year, I was invited to a meeting at the Armenian Homenetmen Club to discuss establishing Guide and Brownie units.

They had already discussed establishing Scouting with the Scout Commissioner and they had copies of the Scout Handbooks and P.O.&R. I am told that the day after my meeting with them, the Secretary went into Guide Headquarters and purchased copies of our Handbooks and Guide P.O.&R.! At this meeting I was also given literature on Armenia, as I must confess that prior to this, I had no idea where Armenia was on the map!

A week or so later, I attended another meeting which was a Commissioner's dream; I was confronted by eight dark-haired girls all interested in becoming Guiders! (Two later decided not to continue.) Most of the girls had had Guiding experience in their own country and all were members of the Homenetmen Club which is the sponsoring body for the Guiding and Scouting units, as it was decided that they be closed units. We arranged for the girls to visit other Guide and Brownie units within the District to see meetings in progress.

Getting the Guiders into uniform and enrolled was the next step. This was done at a normal Sunday evening meeting of the Homenetmen Club. The hall was packed with Club members, friends and relations, and a movie and still cameras were in operation as each Guider made her Promise, flanked by both the Australian and Armenian flags.

Stage 1 Training followed which all the Guiders thoroughly enjoyed. During this time one trainee, Rose Keshishian, had been acting as Assistant Guider for 3rd St. Kilda Company. This was excellent experience for her, and at the same time, helped the Guider there. She had been without an Assistant for most of the year. About a month before opening her own unit Rose took the first six girls to join in with 3rd St. Kilda Guides. They did their Pre-Promise Challenges and preparations with the help of their own three Guiders.

Promise day for the first six Guides was planned to coincide with the Armenian National Day. Again the hall was full and

the ceremony was preceeded by national dancing and playlets depicting the first translations of the Bible into Armenian in 400 B.C.

A week later, two of the Guides proudly represented their new unit at the gathering for Princess Margaret.

When I attended their Guide meeting about three weeks later I was very interested to see that they had divided into two patrols, and that they had chosen as their patrol emblems, the Kookaburra and the Wattle.

All the Armenians I have met so far speak excellent English, and the Guide meeting was conducted in English, so I was very interested when they sang Taps in Armenian. I have resolved to learn it, so I can join in!

The 5th St. Kilda (Homenetmen) Brownie Pack, is already established, and one of the Brownie Guiders has been attending another unit in the District for experience. The Brownies' first Promise ceremony was held at Gilwell Park, together with the investiture of the first Scouts and Cubs from the 5th St. Kilda (Homenetmen) Scout Troop and Cub Pack.

PAT. CASHMORE,  
(District Commissioner), St. Kilda.

For those who would like to join Mrs. Cashmore in her challenge to learn to sing Taps in Armenian, here is the phonetic version.

Ver-cha-lois, knuzt arev,  
Lid-ge-ren, pa-loon-gen, yer-gin-ken,  
Kha-gha-gen hunk-chet-zec,  
Der-ez ztez.

## BADGERS CLUB

The Badgers Club, a group of Scouts and Guides interested in collecting both metal and cloth badges is compiling a badge history of both movements. Any person interested or with badges of interest should contact the Secretary, P.O. Box 38, Fairfield, Vic., 3078.

## LEADERS' FRIENDSHIP GROUP

Coming attractions include theatre nights, social dinner and dance evenings. Please contact Jean Parkin (telephone 729 7714) for details. New members always welcome.



# MINI OLYMPICS

## ATHLETICS PROGRAM

### Brownies

1. 70 metres Sprint, 1 girl only.
2. 70 metres Baton Relay, 8 in team.
3. Flower pot Relay, 4 in team.
4. Semaphore Relay, 4 in team.
5. Olympic Challenge Team, 70 metres Baton Relay, 4 in team.
6. Olympic Challenge Team, Flower pot Relay, 4 in team.
7. Olympic Challenge Team, Semaphore Relay, 4 in team.

### Guides

1. 100 metres Sprint, 1 girl only.
2. 100 metres Circular Relay, 4 in team.
3. Stretcher Race, 4 in team.
4. Lifeline Relay, 4 in team.
5. Olympic Challenge Team, 100 metres Circular Relay, 4 in team.
6. Olympic Challenge Team, Stretcher Race, 4 in team.
7. Olympic Challenge Team, Lifeline Relay, 4 in team.

### Rangers

1. 100 metres Sprint, 1 girl only.
2. 100 metres Circular Relay, 4 in team.
3. Mini Orienteering, 2 in team.
4. Olympic Challenge Team, 100 metres Sprint, 2 in team.
5. Olympic Challenge Team, Mini Orienteering, 2 in team.

Brownie and Ranger field events are self explanatory. The following explains Guide events.

### Lifeline Relay

In this event we are simulating rescue of someone in the water. Team of 4. Number 1 commences on starting line with rope at her feet. Numbers 2, 3 and 4 are on marked point 12 metres from Number 1.

On whistle, (Starting orders will be; "On your mark", "Set", whistle) Number 1 coils rope and throws to Number 2. For this event ONLY you may loop lifeline around wrist (Refer Australian Guide Handbook, page 181), BUT in real life situations when rescuing a person you must not have a lifeline attached to you, for you can be pulled into the water.

Rope must land within easy reach of Number 2 who attaches end to object provided. (Timber hitch.)

Immediately Number 2 ties the knot she raises her hand indicating to Number 1 that object may be hauled in. Number 2 then walks behind object as Number 1 hauls it in using correct method, i.e., hand over hand, smoothly, steadily. (If you jerk a lifeline while hauling in a patient you may drown her.) When Number 1 hauls object over line and undoes timber hitch Number 2 takes place of Number 1 and commences to coil rope. While Number 2 coils rope, Number 1 runs to join Numbers 3 and 4, taking her place behind Number 4. She restores object to Number 3. Each girl throws lifeline and ties knot. Team finishes when all members have resumed original places and rope is coiled at feet of Number 1. All members of team then sit. Time limit for this event is 8 minutes.

### Stretcher Race

Team of 4. All must be capable of making a stretcher and tying an ankle bandage. On the day judges will select one team member to tie ankle bandage. (Refer Australian Guide Handbook, page 175.)

Team provides triangular bandage. Central committee provides 2 x 6 foot poles and 10 x 6 foot lengths of rope.

3 team members assemble at starting point with stretcher equipment. Selected team member with bandage and SMALL Brownie patient is at marked point 15 metres from her team. (Team provides own Brownie.)

On signal to start ("On your mark", "Set", whistle) 3 team members commence making stretcher and selected member with bandage, bandages Brownie's ankle.

When stretcher is complete 3 team members carry it 15 metres to patient. Patient must be assisted on to stretcher and all 4 members transport stretcher, carrying patient 15 metres back over starting line. Event finishes when stretcher and all team members are correctly over the line. Time limit for this event is 10 minutes.

Try these activities in your unit.

Next month we will talk about the Olympic Challenge Team. Details of all events can be obtained from your Region Representative.

**GUIDERS: CUT THIS OUT AND PUT IT ON YOUR NOTICE BOARD!**



## ARGANA TREFOIL GUILD

No doubt many readers will have seen an account of the Deer Park Community Health Centre on television.

Although I live in Deer Park I did not realise until recently, the impact such a centre could have on a community.

Apart from medical services by doctors, nursing sister, dentist, physiotherapist, there are social welfare and legal aid services available and a meeting room for use by various organisations.

Imagine the thrill we, the Argana crowd, had holding our 3rd Annual Meeting at the centre.

The room was prepared for us by Mrs. Surman, manager of the centre, who also organised speakers — a tremendous help to our ladies, especially the secretary.

Dr. Philip Hammond, of the centre, spoke on the need for less medical treatment and more preventive treatment of many of today's illnesses. He stressed that groups such as trefoil do so much to prevent sickness, and the need for more participation by women in these groups.

Social Welfare officer, Mrs. N. Daley, told of the need for a roster of older or lonely women who could help with baby sitting for deserted, divorced, single or sick mothers.

The children's room at the centre needs toys for use by the tinies whilst their mothers are seeing the doctors and for after-school-latch-key children.

Argana is preparing one of its crochet rugs for use on the doctor's bed. (One doctor is in residence every night.)

I never visualized such a centre for Deer Park when I attended a meeting to "cry" for a doctor for Deer Park.

Argana's project for table place mats was launched at our meeting and printing begins soon. Details can be obtained from Mrs. Townsend, 843 Ballarat Road, Deer Park. Telephone: 393 1020.

Only a few tea towels of the original design are left for sale.

M. TOWNSEND,  
"Argana".



## KANYANYA DAY

A Thanks badge was presented to Mr. Kevin Smith, Acting Assistant Area Commissioner for Hoadley Venturers at the North Metropolitan Region's Kanyanya Day, held recently near Gisborne. For the past eight years, with the help of Hoadley Venturers and their Leaders, Kevin has organised the activities for the girls on this great day, and the increasing number of Guides attending, proves its popularity.

The 567 Guides from North Metropolitan Region and nearby McKay Division were named Squatters, Bushrangers, Diggers, Pioneers and Explorers, in keeping with the Colonial Day theme. In their five groups they visited the Venturer manned activities which included a wonderful obstacle course. Teams of Guides were challenged to carry a mug of water for the entire course, which crossed the creek many times by such devious contraptions as a scramble net, a three strand rope bridge and fallen logs. The course even included climbing up and over a high bush ladder. Needless to say the contents of the mugs spilt at an early stage.

The magnificent flying fox was very popular and Guides were swinging high across the creek all day. A Fireman's chair lift was worked by "Guide Power" and an orienteering section tested compass knowledge. In the Craft/Art area, Guides were using the abundant natural material to make bark paintings, charcoal drawings and table decorations. Two very competent Commissioners were busily helping Guides to weave with the aid of a "Camp Loom". Baling twine and long dry grass were used to make a comfortable mattress.

The Gold section gave Guides the opportunity to inspect some very unusual gem stones, see them cut, tumbled and polished and then try their hand at gold panning and cradling.

With the two koalas which had viewed the day from a tall tree, we gazed at the deserted area as the last bus and car pulled away. Was it possible that 739 Guides, Leaders, Commissioners and Venturers had spent the day there and left without a trace? Guides had been encouraged to take their rubbish home and had truly left "nothing and their thanks".

A GREAT DAY — THANKS TO THE  
VENTURERS OF HOADLEY AREA.



# TRAINING CALENDAR

**COMMISSIONERS AND UNIT LEADERS** with the necessary experience are welcome to apply for **ANY** training. Applications should be sent **prior to the closing date** and be **accompanied by the training fee and a stamped self addressed envelope**. Training fees are \$3.00 unless otherwise stated. **Early application for all trainings is recommended.**

## STAGE 1 TRAINING

**ARARAT** — 29th May-30th May and 19th June — Guiders who have applied to attend this training (or Stage 2) and who require hospitality arranged would they please notify Training Adviser, Mrs. J. Hucker, **immediately.**

**BENDIGO** — weekend 19th-20th June — time 10.00 a.m. to 9.30 p.m. and 9.30 a.m. to 4.30 p.m. Applications to Mrs. R. Wilkins, P.O. Box 492, Bendigo, 3550 by **28th May.**

**HEADQUARTERS** — Wednesday 23rd-30th June, 7th, 14th, 21st, 28th July — time 9.45 a.m. to 1.00 p.m. Applications to Training Department, Guide Headquarters by **1st June.**

**HEADQUARTERS** — Weekend 3rd-4th July — time 10.00 a.m. to 9.00 p.m. Saturday and 9.30 a.m. to 5.00 p.m. Sunday. Applications to Training Department, Guide Headquarters by **11th June.**

**HORSHAM** — Weekends 10th-11th July and 31st July-1st August — time 10.00 a.m. to 4.00 p.m. Applications to Miss D. Pearse, "Edgbaston" Donald, 3840 by **21st June.**

**KEILOR** — Weekends 3rd-4th July and 7th-8th August — time 10.00 a.m. to 4.00 p.m. — Golden Rise Primary School, St. Albans Road, Keilor. Applications to Training Department, Guide Headquarters by **14th June.**

**MILDURA** — Weekends 31st July-1st August and 18th-19th September — time 10.00 a.m. to 4.00 p.m. Applications to Mrs. A. Smith, 10 Barry Avenue, Mildura, 3500 by **9th July.**

**PAKENHAM** — Weekends 26th-27th June and 17th-18th July — time 10.00 a.m. to 4.00 p.m. Applications to Mrs. H. Lardner, 51 Bundeena Avenue, Noble Park, 3174 by **5th June.**

**THORPDALE** — 17th-18th July and 14th-15th August — time 10.00 a.m. to 4.00 p.m. Applications to Mrs. K. Marshall, 29 Hearn Street, Drouin, 3818 by **26th June.**

## STAGE 2 TRAINING FOR WARRANTED GUIDERS

Note: Stage 2 training is aimed at helping you directly with your leadership role. Please assess your needs and list them on the application form.

**CARDROSS** — Weekend 17th-18th July — time 10.00 a.m. to 8.30 p.m. Saturday and 9.30 a.m. to 4.30 p.m. Sunday. Applications to Mrs. A. Smith, 10 Barry Avenue, Mildura, 3500 by **26th June.**

**PYRAMID HILL** — Weekend — 7th-8th August — time 10.00 a.m. to 9.00 p.m. Saturday and 9.30 a.m. to 5.00 p.m. Sunday. Applications to Mrs. R. Wilkins, P.O. Box 492, Bendigo, 3550 by **19th July.**

**WATTLE PARK** — Weekend — 26th-27th June — time 10.00 a.m. to 8.30 p.m. Saturday and 9.30 a.m. to 4.30 p.m. Sunday. Applications to Mrs. F. Ludbrook, 5 Curnola Avenue, Doncaster, 3108 by **5th June.**

## PACK HOLIDAY TRAINING

**RIDDELLS CREEK** — 9th, 10th, 11th July — time 6.00 p.m. Friday to 3.00 p.m. Sunday. Application, stamped addressed envelope and \$9.00 fee to Mrs. A. Watsford, P.O. Box 50, East Bentleigh, 3165 by **18th June.**

## LOCAL ASSOCIATION TRAINING

**RUSHWORTH** — Tuesday, 8th June — time 9.45 a.m. to 3.30 p.m. Applications plus \$1.50 per Local Association to Mrs. J. Murphy, 73 Balaclava Road, Shepparton, 3630 by **18th May.**

## RESIDENTIAL TRAINING WEEK

Date — 21st to 29th August. Subjects to include Stages 1 and 2, Pioneering and Orienteering, Learning Games (with aids) Singing Games etc. Live-in accommodation only. Applications, stamped addressed envelope and \$32.00 to Training Department, Guide Headquarters by **19th July.**

## BUSHCRAFT TOUR

Dates — 28th August to 4th September. Further information available from Training Department, Guide Headquarters.

## SPECIAL SUBJECTS FOR RANGER GUIDERS

**HEADQUARTERS** 7th-8th August time 10.00 a.m. to 4.00 p.m. Applications (including requests), \$1.50 and stamped addressed envelope to be sent to Training Department, Guide Headquarters by **19th July.**

## GUIDE KNOWLEDGE

**HEADQUARTERS** — 10th July — time 10.00 a.m. to 3.30 p.m. Applications plus \$1.00 fee to Training Department, Guide Headquarters by **20th June.**

## OUTDOOR DAY

**DONVALE CAMPSITE** (includes knotting, fire lighting, "no utensil" cooking) 19th June — 9.30 a.m. to 3.30 p.m. Note: Please bring cut lunch. Applications plus \$1.50 fee to Mrs. F. Ludbrook, 5 Curnola Avenue, Doncaster, 3108 by **29th May.**

## SAFETY AND YOU + GUIDE GUIDERS ONLY

**HEADQUARTERS** — Tuesday, 20th July and 10th August — time 7.30 p.m. to 9.30 p.m. Applications plus \$2.50 to Mrs. F. Ludbrook, 5 Curnola Avenue, Doncaster, 3108 by **30th June.**



**CONGRATULATIONS** to the recipients of the following:

### Guiders Long Service

(30 years) Mrs. E. Graham, Morwell.  
(20 years) Mrs. M. Murphy, Shepparton.  
(10 years) Mrs. W. Lovelock, St. Albans; Mrs. J. Kilgour, St. Albans; Mrs. H. Riordan, Chadstone; Mrs. G. Deacon, Bright; Mrs. J. M. Popple, South Morang; Mrs. M. Smith, Dandenong; Mrs. P. Kirkpatrick, Balwyn; Mrs. J. Robin, Greythorn; Mrs. V. Trembath, Plenty; Mrs. H. Barry, East Keilor; Mrs. M. Cusworth, Glenhuntly; Mrs. F. O'Sullivan, Stawell; Mrs. H. Macdonald, Castlemaine; Mrs. P. Parson, Castlemaine; Mrs. E. Smith, Healesville; Miss J. Lucas, Malvern.

### Combined Long Service

(30 years) Mrs. F. Field, Moorabbin.  
(10 years) Miss M. Hunt, Chadstone; Mrs. B. Weaver, Deer Park; Mrs. P. Thiele, Glen Waverley; Mrs. A. Fitzmaurice, Plenty; Mrs. M. Gray, Avondale Heights.

### Local Association Long Service

(10 years) Mrs. C. Wilkinson, North Balwyn; Mrs. D. Wasley, Plenty.

\* \* \* \*

### Thanks Badge

Miss M. Baillie, Colac; Miss J. Jukes, Balwyn; Mr. K. Smith, Pascoe Vale South; Mr. J. W. Fitzmaurice, Plenty.

### APPOINTMENTS AND WARRANTS

A warm welcome is extended to the following:

#### District Commissioners

Mrs. J. C. Chataway, Beaumaris; Mrs. J. J. Howard, Grenville/Buninyong; Mrs. G. T. Poade, Doveton; Mrs. E. M. Phillips, Mooroolbark; Mrs. D. M. Irvine, Leitchville; Mrs. W. Carlson, Morwell; Mrs. A. G. Leitch, Moe; Mrs. B. V. Rainsford, Cann Valley; Mrs. D. N. Maddocks, Puckapunyal; Mrs. K. S. Gross, Horsham; Mrs. M. I. Coombes, Wodonga West; Mrs. W. Ravailion, Pascoe Vale; Mrs. M. Ferguson, Mt. Eliza; Mrs. G. E. Exell, Murtoa; Mrs. G. M. Palmer, Ivanhoe/Heidelberg.

#### Guide Guiders

Mrs. R. Oaten, 1st Waverley North; Mrs. E. McPhan, 2nd Wodonga; Miss M. Watson, 1st Montrose; Mrs. L. Frost, 1st The Basin; Mrs. C. Walsh, 3rd Caulfield; Mrs. A. Young, 9th Ballarat; Mrs. G. N. Sprott, 1st Warrandyte; Mrs. E. Lander, 1A Sale; Mrs. M. McGregor, 2nd Greensborough; Mrs. W. Bicknell, 1st Tallygaroopna.

### Assistant Guide Guiders

Mrs. A. G. Miller, 3rd Brandon Park; Mrs. L. C. Reither, 1st Terang; Mrs. J. Hewett, 3rd Caulfield; Mrs. K. Sheedy, 1st Tallygaroopna.

### Brownie Guiders

Mrs. I. Davies, 2nd Herne Hill; Mrs. J. C. Scott, 1st Wodonga; Mrs. E. Hales, 1st Dartmouth; Mrs. J. Godwin, 2nd Montrose; Mrs. H. Beckett, 1st Elliminyt; Mrs. I. Perrier, 1st Brighton Beach; Mrs. J. Humphreys, 11th Ballarat; Mrs. L. Michael, 4th Hawthorn; Mrs. J. T. Sidwell, 2nd Eltham; Mrs. M. Smith, 1st Hallam; Mrs. G. P. Edwards, 1st Stawell; Mrs. J. McEbsworthy, 2nd Stawell; Mrs. M. Sharp, 2nd Highvale; Mrs. B. Russell, 1st Greensborough; Sister S. Williams, 2nd Terang.

### Assistant Brownie Guiders

Mrs. A. J. Rishworth, 3rd Waverley North; Mrs. R. G. Sherwood, 2nd Yarrowonga; Mrs. K. T. Baensch, 3rd Bennettswood; Mrs. L. Petty, 2nd Donvale; Mrs. F. H. Ellard, 2nd Donvale; Mrs. M. J. Baxter, 1st Donvale; Mrs. R. N. Smith, 1st Donvale; Mrs. K. E. Miller, 4th East Malvern; Mrs. D. Oswald, 2nd Hallam; Mrs. A. Wakefield, 1st White Hills; Mrs. F. Atkins, 2nd Keysborough.

### REGISTRATIONS

1st Moolap Pack; 2nd Croydon North Pack.

### RESIGNATIONS AND RETIREMENTS

We acknowledge with gratitude the services given by the following, whose Warrants have been returned:

#### Region Commissioner

Mrs. A. K. Sutherland, Acheron.

#### Division Commissioner

Mrs. K. Methven, Cranbourne.

#### District Commissioners

Mrs. A. Austin, Beaumaris; Mrs. N. S. Jenkins, Grenville/Buninyong; Mrs. L. Mulhallen, Nhill; Mrs. T. W. Bruns, Leitchville; Mrs. M. A. Whitmore, Morwell; Mrs. E. I. O'May, Myrtleford; Mrs. N. E. Hawkes, Stratford; Mrs. J. H. Begg, Ivanhoe/Heidelberg; Mrs. A. W. Lord, Westmeadows/Gladstone Park; Mrs. S. A. Howell, Violet Town.

#### Ranger Guider

Mrs. D. Aburrow, Echuca Rangers.



## Guide Guiders

Mrs. D. Keele, 1st Middle Park; Mrs. R. P. Hoare, 3rd Morwell; Mrs. C. Murray, 1st Morwell; Mrs. B. L. McDonnell, 5th Wattle Park; Mrs. C. Bateson, 1st Watsonia; Miss A. J. Ferris, 1st Leongatha; Miss S. F. Little, 2nd Leongatha; Miss R. H. Plumridge, 17th Geelong; Mrs. I. F. Boyd, 2nd Bennettswood; Miss K. J. Munroe, 1st Montrose; Mrs. R. G. Marks, 1st Waverley North; Mrs. B. Flanner, 1st Nathalia; Miss R. M. Cain, 1st Avoca; Mrs. J. Hewett, 3rd Caulfield; Mrs. K. Gossip, 1st Gisborne; Mrs. M. Thompson, 1st Chiltern; Mrs. M. McDonnell, 1st East Bendigo; Miss A. Taylor, 1st Yallourn North; Miss N. Baker, 1st Murtoa; Mrs. K. J. Lynch, 1st "A" Sale; Miss B. Eyers, 1st Broadmeadows West; Mrs. B. Hogg, 4th Box Hill.

## Assistant Guide Guiders

Miss L. McKee, 2nd Charlton; Miss L. Sinclair, 1st Manangatang; Mrs. L. Frost, 1st The Basin; Mrs. C. Walsh, 3rd Caulfield; Mrs. A. Young, 9th Ballarat; Mrs. J. Pettitt, 2nd North Ringwood; Mrs. R. Trueman, 1st Newcomb; Miss R. J. Stone, 1st Koo-wee-rup; Miss M. J. Luken, 1st Murtoa; Mrs. E. Lander, 1st "A" Sale; Mrs. G. N. Sprott, 1st Warrandyte; Miss C. J. Talsma, 1st Herne Hill; Miss J. M. Grellet, 1st Great Western; Mrs. H. Castles, 1st Lake Boga; Mrs. L. Jarick, 3rd Herne Hill; Mrs. W. Bicknell, 1st Tallygaropna.

## Brownie Guiders

Mrs. B. Lovell, 2nd Bennettswood; Mrs. B. Johnson, 1st East Doncaster; Mrs. D. K. Whitehead, 1st Bealiba; Mrs. B. E. Shores, 1st Wattle Park; Mrs. M. Lynch, 3rd Morwell; Mrs. J. M. Perkins, 2nd Blackburn South; Mrs. K. Parker, 1st Carisbrook; Mrs. C. S. Saffron, 2nd Newcomb; Mrs. E. J. Willis, 1st Koo-wee-rup; Mrs. K. R. Curtis, 1st Sandringham; Mrs. D. K. King, 1st Broadmeadows West; Mrs. J. Dowie, 1st Doncaster; Mrs. F. J. Littlejohn, 1st Numurkah; Mrs. M. Young, 11th Ballarat; Mrs. T. Cawley, 2nd Belgrave; Mrs. K. R. Hilton, 2nd Highvale; Mrs. I. Oliver, 1st Horsham.

## Assistant Brownie Guiders

Mrs. P. Wolstenholme, 1st Beaumaris; Mrs. J. Godwin, 1st Montrose; Mrs. I. R. Perrier, 1st Brighton Beach; Mrs. J. Humphreys, 11th Ballarat; Mrs. P. Gilbert, 8th Ballarat; Mrs. N. G. Derrick, 1st Girgarre; Mrs. J. H. Cram, 1st Murtoa; Mrs. F. Grant, 1st Bentleigh; Mrs. N. W. Bedggood, 1st Stratford; Mrs. M. Sharp, 2nd Highvale; Sister S. Williams, 2nd Terang.

\* \* \* \*

## PHILLIP ISLAND FARM HOLIDAYS

Spacious attractive surrounds, beachfront, horse-riding, hay-rides, animals, etc. Four new log cabins. Recreation hall. Families, schools and groups. Telephone Mrs. Jeffery on (059) 56 7288.

# GUIDE SHOP

## NEW ITEMS

Brownie Guide Slacks (Brown)	
Size: 7-8 .....	\$11.25
9-10 .....	\$11.25
Skivvie (Gold)	
Size: 6 .....	\$4.50
8-10 .....	\$5.25
Skivvie (Pale Blue)	
Size: 10, 12, 14 .....	\$5.25
Small, Medium, Large .....	\$6.40
Windcheater (Navy)	
Size: 8, 10, 12 .....	\$9.00
SM, M, OS .....	\$9.00
Guide Camp Beanie	\$2.00
(Warm ears for Autumn and Spring camping.)	

Periwinkle Series — New editions	
Australian Eucalypts .....	\$2.90
Australian Bushcraft .....	\$2.90
100 Walks in Victoria .....	\$2.95
(Containing Track Notes for 100 One, Two or Three Day Walks, graded as Easy, Medium and Hard.)	
Paddy Pallin's Bushwalking and Camping	\$1.00
Leisurecraft Series — New editions	
Cloth Sculpture .....	\$1.75
Fantastics in Plastic .....	\$1.75
Lampshades .....	\$1.75
De'coupage .....	\$1.75
Painting Stones .....	\$1.75

Clear Plastic Cover for —	
Australian Brownie Guide Book .....	0.20
Australian Guide Handbook Part 1 .....	0.20
Irene Fairbairn Badges .....	0.10
Get Moving Badges .....	0.10



## NIGHT OF PLAYS

Moorleigh District had a night of plays and variety items for Thinking Day in the local High School hall which was big enough to house the large audience. The evening was very enjoyable with each company and pack providing a different definition of the word "play". For instance, one was the Brownie Story, done in mime, while another was a sing-song of the seaside. The campfire songs from all round the world interspersed the items and reminded us of Guides and Brownies in other countries who were also celebrating Thinking Day.

To help the idea along some guides dressed in international guide uniforms.

3rd Moorleigh Guide Company.