

MATILDA

GIRL GUIDES ASSOCIATION, VICTORIA



Take a parachute, an enormous ball and add one hundred brownies, guides, leaders, families and you have a happy morning packed with exciting FUN
(See full story on Page 252)

In this issue . . .	Page
Children's Week	268
Conservation	269
Guide Service Team	254
Guide Shop	272
International News	256
Leisuretime Activities	261
Local Association Section	264
Mini Olympic Games	263
M.O.G. Fever	252
Notices	248, 254, 262, 263, 265, 266, 267, 268, 269
Personnel Changes, etc.	271
Ranger Happenings	250
Reporting from Russell Street	249
Service Opportunities for Guides	255
State Commissioner's Letter	247
Training Calendar	270
Training Pages	257-260
Unit News	267-268

MATILDA

PUBLISHED BY THE GIRL GUIDES ASSOCIATION OF VICTORIA
20 RUSSELL STREET, MELBOURNE, VICTORIA, AUSTRALIA, 3000

State Commissioner: MRS. F. S. GRIMWADE

State Secretary: MISS M. W. BARR

Assistant State Commissioners: MRS. D. O. OLDFIELD

MRS. A. J. TURNBULL

Editor: MRS. L. I. RICHARDSON, 31 Hampshire Road, Forest Hill, 3131



From our State Commissioners

Dear Everyone,

How we miss our bright and breezy boss around the office! I am sure I speak for all Advisers and staff at Headquarters in saying it is not quite the same without Joan popping in and out of the office and chairing our many meetings. As you read this, Joan and Fred will be in London and we look forward to hearing news from them very soon.

Before Joan departed, she asked me to pass on this message to you following the St. George's Day Service at St. Paul's Cathedral:

"It was wonderful to see my Guide family at the St. George's Day Service and what a fantastic number of you came to that very inspiring service. I hope you all enjoyed it as much as I did and as much as my English Guide and Brownie visitors did.

"I do want to say a very big thank you to all who contributed to the success of the evening. Mrs. Renshaw Jones and Mrs. Squire, members of the Diocesan Scout-Guide Advisory Council, who did so much of the organising, our Guide for her reading, our Ranger, Guide and Brownie who lead responsive readings, Colour Party, Guard of Honour and Ranger ushers and offertory collectors and our young Guider who escorted the St. George's Day Flag. Whilst these did something extra, each one of you contributed in your own way to the happiness and success of the night and I felt very proud of you."

I am very pleased of the opportunity of

writing to you, in Joan's absence, and I am very thrilled to hear the variety of activities being carried out throughout the State, particularly for Thinking Day and "April Action". From Region reports and from talking with Guiders and Commissioners, results of both these drives could well be better than last year.

Our thoughts are with all country folk suffering at present from desperately dry conditions. We realise this may make it difficult to carry out their Guiding activities to the full. However, enthusiasm for Guiding is still there and we hope things will improve very soon in these areas.

We have many reports of preparations for the Mini-Olympics to be held in September, and Districts which have already had their heats have had tremendous fun. The main thing is to have — lots of fun — with not too much serious competition. Remember — Guiding is fun — and with Mini-Olympics being the main State Guiding activity this year, we want you to really enjoy taking part. And do not forget our "Get Moving" badge! This badge can be earned by taking part in at least four activities along the lines of the "Life — Be In It" campaign ideas. The "Get Moving" badge can be worn on Brownie and Guide uniform and is now available in the Shop.

Extension Section held their Swimming Carnival at the new Y.W.C.A. pool and Rangers, Guides and Brownies had unbelievable fun. Most girls participated with the help of their leaders and several active Rangers, and the afternoon was voted a tremendous success.

Recently, at Guide Headquarters, Joan, Lysbeth, Peg and I met with the new Chief Commissioner of the Victorian Scout Association, Dr. Norman Johnson, and his Assistants and General Secretary. It was an

informal and most satisfactory meeting with several topics being discussed; a main one being joint Guide/Scout activities. All agreed these should be encouraged.

103 Guides received Queen's Guide Royal Certificates from the Governor at Government House in May. Highlight of this presentation ceremony was the awarding of the Gilt Cross by the Governor to Mrs. B. A. Stevenson, leader of 1st Red Hill Guide Company, for her courageous action when a fracas occurred during Patrol Leaders' return train journey from camp Jumbunna in South Australia. We are proud of Bev. as is her family who attended the ceremony. We congratulate her on receiving this award. Her brave action was that of a true leader.

We regret we are unable to invite parents to our Queen's Guide Presentations of Certificates. This also greatly concerns our Governor, but space at Government House just does not permit any more invitations than are issued at present. We hope parents understand this difficulty.

Second term is always popular for Conferences. Several Region Conferences are coming up and include a combined one for three Regions in the Western District. Ranger and Ranger Guider's Conferences are to be held in June and July.

I recently attended Barree Region Conference, my first visit to Barree, as well as some District Annual Meetings. As always, I enjoyed meeting many new Guiding people — Commissioners, Guiders and Local Association members.

During the next three months when we hear news of Joan's travels, I will pass it on to you through my letters.

In the meantime, have fun with all your activities in this "Get Moving" year.

With very best wishes,

Jean Oldfield

Acting State Commissioner.



VICTORIAN GUIDERS' CONFERENCE

Saturday, 9th October, 1976

10.00 a.m. to 5.00 p.m.

University High School,
Story Street, Parkville

Come to LAUGH — LEARN — LISTEN
and "BE PREPARED"
to give YOUR views on subjects vital to
Guiding today and tomorrow.

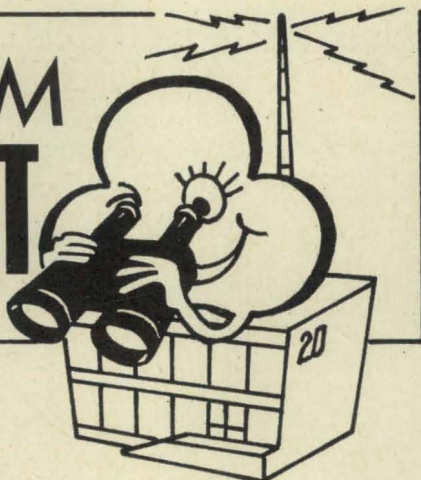
Program and Application Form will
appear in August "Matilda".
but mark the date in your diary **NOW**,
arrange a party to come from your
District and do not forget your former
District Guiders. Many may appreciate an
invitation to spend a day out with you, to
have the opportunity to renew friend-
ships, and to hear where Guiding is going
in the future.

Special Note to Country Guiders

If you intend travelling to and from the
Conference by train, please apply to
Headquarters for a rail concession form
now.



REPORTING FROM RUSSELL STREET



TRAINING ADVISER

Our new Training Adviser, Miss E. Bunning, took office early this month and we welcome her to this demanding job. Should anyone wish to contact her at any time, her home address is Flat 3, 26 Baringa Street, Mount Waverley, 3149, telephone 232 0679. Our warmest thanks and best wishes go to Mrs. Thiele for the wonderful job she has done for the Movement while serving as our Training Adviser.

CAMPING — AN EXCITING HAPPENING

Be in it — at Britannia Park.

Out of doors.

On 13th-16th January and 17th-20th January.

Must be 11½-13 years at date of camp.

Enthusiasm.

Really interesting.

Action activities for those

Never having camped before

Guides.

Cost: Camp fee \$14, plus \$4 return bus fare from Melbourne. Forty Country Guides and forty Metropolitan Guides for each period — limit, two Guides from any one Company. Applications accepted **in order of receipt of stamped, self-addressed envelope** for application form. Please state preference for dates. Apply to Secretary to Advisers. No applications considered after 14th July. Guides should not apply for this camp if they have ever camped in a Guide Camp before.

QUEEN'S GUIDE PRESENTATION CEREMONY

The next Presentation Ceremony will take place on Saturday, 2nd October, and information to this effect should now be passed on to present and prospective Queen's Guides. It is necessary that papers for any girl who is to attend this Presentation should reach Headquarters by **11th August** at the latest. Information about the Ceremony and the rehearsal for it will be sent to the girls concerned at the end of August.

CAMPING AND TEST CAMPS

Concern is felt about inexperienced Guides and Guiders coping with setting up camp in the dark on Friday nights for weekend camping, so — "It is strongly recommended that a Guider wishing to hold a Permit Test Camp over a weekend should hold this camp during the period of 'Daylight Saving Time'."

OPEN DAY FOR ALL COMMISSIONERS

A final reminder — applications for the Commissioners' Open Day and the Division Commissioners' Meeting which are to "happen" on 20th July should be sent in now. Don't delay — apply today.

GUIDE BISCUIT SCHEME

Regretfully we have to announce increases in prices of the Girl Guide Biscuits baked by Arnott-Brockhoff-Guest Pty. Ltd. From 7th June the amount charged will be 107 cents per kilogram — \$5.82 per case.

CONCESSION FARES

We have been asked for information on what concession fares are available to members travelling by public transport.

Railways. Parties of six or more are eligible for special fares, application being made at local stations on special form obtainable from local stations, Headquarters, or Tourist Bureau.

For State conferences a special concession is allowed for individual travellers provided at least six members from whole state travel by rail. Application is made in the first instance to the State Secretary.

Tramways. Individual members, excluding adult leaders, travelling to Guide functions in uniform are entitled to travel at children's fare rates irrespective of age.

RANGERS...RANGERS...RANGERS...RANGERS...

Rangers may be found doing anything and everything, anywhere and everywhere, any time and all the time, and always, enthusiastically.

Victorian Rangers are certainly no exception.

From all corners of the state they travelled to Ballarat for the **1976 Rowing Regatta**.

Lake Wendouree became a hive of industry and amusement and, impeded only by blisters, sore toes and knees, mosquitoes, curious swans and a stray dog with a strange attachment to moving boats, girls energetically competed in the day's events.

There followed a night of feasting, singing and sleeping (a little) at Lingbogel campsite in preparation for the final contests next day.

The Regatta was won by "S.R.S. Brisbane", closely (?) followed by Ballarat and others . . .

BALLARAT RANGERS.
Ballarat Rangers.

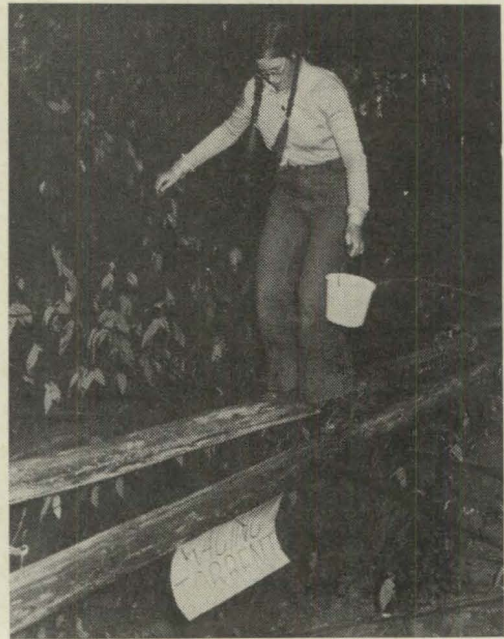


(Photograph — Ballarat Courier)

More recently 48 Rangers travelled by train to Hurstbridge and then by bike the eleven miles to "Tapestry" at Strathewen for **Commando Capers**.

"Tapestry" is the 66 acre property left to the Girl Guide Association for the use of the Ranger Section by the late Lady Anne Rylah, a former Ranger Adviser.

Theme for the weekend was Bushrangers



(Photograph — G. Thomopoulos)

surviving in the bush and contending with the annoying presence of Troopers (Guiders), Bushrangers outnumbered troopers . . . 48 to eight.

On Saturday, in preparation for the rigours of survival against the troopers, bushrangers were taught many knots, and instructed in map making. Each bushranger patrol then had to construct an accurate map of "Tapestry". The afternoon was a test of brains, brawn and skill, for troopers had devised a **COMMANDO COURSE**; up trees, over bridges of all kinds (rope, log, a huge transporter), through tyres slung between trees, under obstacles and over an electric fence. However, before we could attempt these magnificent feats, we first had to struggle with codes explaining where each obstacle was.

During a rowdy campfire that night, a raid was apparently made on the troopers' headquarters, because at a coffee session at Captain Starlight's camp the troopers attacked "US".

RANGERS...RANGERS...RANGERS...RANGERS...

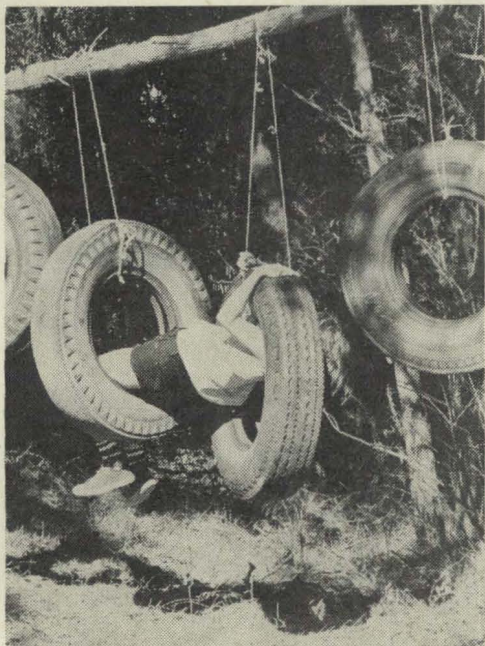
RANGERS...RANGERS...RANGERS...RANGERS...

After Rangers Own on Sunday morning and chariot races using hand made chariots, troopers ordered bushrangers to pack one haversack per patrol with equipment they would need for one night's survival in the bush, restricting us to five items of food per patrol; then they checked our PACKS.

We were sent off for the night, with a set of rules to be followed . . . as if bushrangers can be expected to obey RULES!!

All bushranger gangs quickly made shelters to protect them overnight; then they met at a certain time and place to discuss attack on the troopers. With great difficulty (48 Rangers can be noisy) a plan was devised for capturing the house (troopers' Headquarters). Two girls (as decoys) drew troopers from their Headquarters and we stormed the house, captured four troopers and began a rousing campfire. We used a set of rules, left by the troopers, to make peace with them.

Eventually it was agreed that bushrangers would spend the night out of doors



(Photograph — G. Thomopoulos)

if troopers promised not to attack, we had proved our strength!

They were four fantastic, fun-packed, interesting days. We appreciate all the time and work the troopers put into making Commando capers such a success.

JULIE MOFFATT and
fellow Bushrangers . . .

As well as moving from one end of Victoria to the other to attend Ranger fixtures, some of the girls travel much greater distances for their Ranger activities.

Fifteen girls and five leaders recently spent a wonderful **Holiday in Bali** where they took in tourist attractions such as the National Museum and Monkey Forest, Elephant Cave and the straw market and the King's Tomb. They saw a Tooth-filing ceremony and the Decorations for a Purification, the Government store at Chelak where silver was sold and wood carvings at Mas, dances and puppet shows.

Besides enjoying sight-seeing and learning about the country and its people, the Rangers made many friends with whom they now correspond.

Another "holiday with a difference" took two years to plan.

Essendon Rangers all decided to work to raise sufficient finance to send some of their number to visit Sangam (one of Guiding's World Centres) in India.

Shortly afterwards news reached the Rangers of the beginnings of the **Sangam Service Project**, the reasons for the project and of its aims, and they all appealed to the unit. Almost at once the Rangers decided to take part in the work that was being planned, and so their visit to Sangam had a purpose apart from being a holiday and a chance to broaden their own horizons.

Every member of the unit worked very hard to help to raise funds that would lighten the financial burden on the eight girls who decided to make the trip. It was a total unit effort even though less than one-third of the unit actually went on the trip.

(continued on page 262)

RANGERS...RANGERS...RANGERS...RANGERS...



"M-O-G" FEVER

A virulent strain of "M.O.G." fever has struck guiding folk in all parts of Victoria. Reports indicate that few areas are untouched by the fever and an epidemic seems imminent.

The girls in Extension Section came down with a particularly bad dose when they held their Mini Olympic Games Swimming Sports at the Y.W.C.A. pool recently.

The poolside was crammed with Brownies, Guides, Rangers, leaders, helpers, parents, cousins and aunts.

Kickboard races opened the program, and even those girls normally in wheelchairs, swam very confidently on kickboards. (Close behind every Brownie was a Ranger helper, just in case anyone got a panicky feeling.)

Freestyle races showed that once their calipers are off, there are some fine swimmers amongst the Extensions.

Relays and backstroke races were popular and many heats had to be run.

During the Interval, active Guides and Rangers gave a Life Saving Demonstration. After that the "fun" races began.

There were tunnel ball races, cork scrambles and novelty races where competitors had to put on very wet clothing and swim across the pool.

Then it was time for the Guide and Ranger "helpers" race — and what great swimmers they were!

The program ended with a Guiders' umbrella race.

Wattle Park Brownies, Moorabbin Guides and Frankston Rangers won pennants, every place-getter received a ribbon and every participant took home a frog badge for her camp blanket.

Thanks go to all helpers, starters, judges and life savers. It was a wonderful day.

D.R.

The next week the fever spread to Parkmore District when almost every girl in the five units, every leader and many of their parents and sisters and brothers fell victims to the disease and took part in an athletics (?) and games morning.

Flat races and baton relays with very close finishes held judges' and spectators' concentrated attention.



These were followed by fun events which included — Brownies hopping into very large rubber boots, rain hats and flapping rain coats (buttons done up and all) and running 50 long metres to a team mate in a "Wet Day" race; — more Brownies in a leap frog race where the whole team moved forward like a giant yellow and brown caterpillar until the last girl crossed the finishing line — Guides in a three-legged race, and other Guides dressing a "baby" (team member) in bib, bonnet, nappy, bootees and dummy, and pushing her (different "mother" each lap of the course) in a wheelbarrow to collect each item. What fun and excitement!



(PHOTOGRAPHS BY G. THOMOPOULOS)



But the best was yet to come. Local swimming and fitness expert, Mr. Murray Whitmore and a team from the Reach out for Kids Association with their leader Ian Adams, introduced the girls (leaders and families too) to some "new" games. These were fun unlimited.

No one needed any special talent to chase the enormous Earth Ball (about 2 metres diameter, light weight, air filled) and push it high into the air, or to be part of a circle which, on a signal, lifted the edge of a parachute to make a huge mushroom high overhead; nobody won any of these games but every girl put her very best effort into being part of these very happy and exciting activities.



So badly affected by the "M.O.G." fever were the Parkmore District girls that few wanted the program to end.

Even after the "fever" had subsided the girls voted the morning, when Brownies and Guides, leaders and families had all PLAYED together, the FUN event of all times!

E. M. W.

GUIDE SERVICE TEAM

What has happened to the Guide Service Team? It is alive and doing well! Here is a further bulletin on its progress.

Recently, at a weekend held at Britannia Park, a core membership of the Team met under the leadership of Assistant State Commissioner, Mrs. L. Turnbull, to discuss and plan the Team's future activities and expansion.

This core membership comprises Guiders and Rangers (over the age of 18 years) who specialise in certain subjects and activities which would be needed to fulfil the role of the Team, either as individuals, in a community project, or at times of disaster and/or emergency.

Saturday was devoted to discussion and allocation of these subjects, and where the Team could be used to its best advantage, bearing in mind the already "going concern" organisations, such as Red Cross, the Salvation Army, and the very important factor of not intruding on times and events which could well affect the Guides in their service to the community.

On Sunday morning Detective Chief Inspector Norton, who was Officer in Charge of the Victorian Contingent of Police at the scene of Cyclone Tracy, held an informal discussion on this event, and showed some interesting photographs. He also highlighted the need for some simple but needful work in the fields of hygiene and communications which the Team could operate efficiently.

Members of the Team resolved that the best and most effective way the Guide Service Team could be put into action, would be for everyone in the Movement to be aware of its existence and readiness to operate, and in the event of a need becoming apparent, their action would be to ring Guide Headquarters and speak to State Secretary, Miss Barr, who would then contact the Guide Service Team.

Specialist core members have been allocated in the fields of Child Care, Tenting, Camping . . . lightweight and standing, Catering, Communications, Medical. Further expansion is needed in the field of a Motor Transport Service Pool, Entertainment and Morale. Search and Rescue could well come later and this would include horse-riders,

four wheel drive and truck drivers, aircraft pilot's licence, bush walking.

The Team has an urgent need for experts who will train team members and associate members in the fields of simple car maintenance, such as oil and grease, refuelling, wheel changes, spark plug cleaning and fitting, and in the communications field, Telex Operators, Switchboard, both P.A.B.X. and Plug and Cord, two-way radio, and walkie-talkie.

Team Secretary, Beth Grover, (c/- Police Station, Cressy, 3322, phone (052) 38 8221), is anxious to hear from any Guider who would be willing to register as an associate member in any of the fields mentioned above, or any Ranger who is over the age of 18 years. These associate members would be part of the team working with the specialist core member of their choice.

Is there a willing husband, father, fiance or boy-friend anywhere, who would train members in simple car maintenance? Is there someone who will take on the telex/switchboard etc? PLEASE!

To further the capacity of the Team, Beth has been nominated to attend the Welfare Instructors' Course to be conducted at the National Emergency Services College at Mt. Macedon in June.

After the completion of this course, the Team will meet again, and future planning and expansion will be more clearly defined.

**Commissioners, Guiders,
Local Association members of
WESTERN BORDER,
OTWAY and
WESTERN PLAINS REGIONS**
are invited to a Conference,

"PLAYING THE GAME"

at Lake Bolac, on Tuesday, 13th July from 10.00 a.m. to 3.30 p.m.

Headquarters' speakers; discussion; stall for Sherbrooke River campsite; shop; display.

Lunch \$1.00.

Details from Mrs. L. G. Weatherley, "Blythvale", Streatham, 3351. Telephone (053) 50 7504.

SERVICE OPPORTUNITIES for GUIDES

One of our State Council members, Mrs. M. Jobson, has prepared the following notes hoping they may be helpful to units looking for new service projects:

Residential Rehabilitation Centre (for young people only) 499 Springvale Road, Glen Waverley, 3150, would welcome interest of senior Guides in evenings for friendly discussions, for outings to daytime sporting events, such as cinema or any social events. Young people in these centres are extremely sensitive concerning disabilities and are a challenge to those who take an interest in them. Their main need is friendship.

State Rivers and Water Supply Commission, telephone 509 9511, Public Relations Department. Guides can do field projects to determine pollution in a stream. Very simple materials are required — netting, stocking, dish, filter paper, blotting paper, tweezers, stoppered bottles to take water home to observe for several days. Tests can also determine if a stream is clean or whether pollution is caused by man or forests. These simple methods are equal to laboratory tests, the only difference being that they take longer. Keep in touch with Commission each year as tests of various kinds are initiated from time to time.

Bureau of Meteorology, telephone 662 0311. Film lists are available to any interested groups. Leaflets on "Activities as a weather project" are available on request. Guides can learn how to make observations and how to prepare weather charts.

Victorian Council on the Ageing, telephone 67 8973. Social Worker advises that there are always small needs for the elderly with which Guides can help. At elderly people's flats girls can run simple errands, not the "shopping". They can iron teatowels, handkerchiefs, sew on buttons. There is a need to read to them, then to discuss items read. She suggests one group could adopt an elderly couple, find out their needs and refer them to community services for further help.

BE A GOOD SIGHTED GUIDE

At some time or other, most people will come in contact with a person who is visually handicapped. And, unfortunately, it is usually not a prospect they look forward to.

Not because they do not like blind people as a social group, or because they are unfriendly . . .

It is more that it is a situation they are not sure they can handle. What do they do? What do they say? In a strange reversal of roles, they are the ones who feel handicapped.

Royal Guide Dogs for the Blind Associations of Australia suggest eight ways in which you may "Guide a Blind Person — Safely."

1. Making Contact

Touch the back of your hand against the back of hers. This is the signal for her to take your arm.

2. Grip

She holds **your right arm with her left hand** or **your left arm with her right hand**.

She takes hold of your arm just above your elbow — with her four fingers on the inside and her thumb on the outside of your arm. Her grip should be firm but not tight enough to cause you discomfort.

3. Stance

Keep your arm relaxed, by your side. Her arm is also relaxed, bent at about 90 degrees and held close to her side. She stands beside you, about half a pace behind.

Don't hold your arm too close to your body. It soon becomes uncomfortable. But don't hold it too far away, as you'll lose some of your control and find that the two of you are walking wider than two abreast.



(continued on page 266)



ASIA PACIFIC NEWS Japan

Recently an old member of our Association donated money in commemoration of her decoration by the Emperor for her lifetime social work. With the money we decided to make a "green chapel" deep in the woods right next to our camp site "Togakushi" where it is quiet and serene. The chapel will serve as a place to have our religious services, reflections and meditations and we hope it will help our girls "find their faith in the Highest Spiritual Being".

We have Young Adults' Conferences every year — one in each of the nine Blocks of the country and then one in Tokyo for representatives from the Blocks. Something new this year is that the Conference in Tokyo will be carried in English. We are so handicapped in international languages that we are trying to make an effort in improving the young people's ability in hearing and speaking English.

Korea

- Troops (Girl Scout) in Pusan welcomed Vietnamese refugees in the southern tip of Korea, helped them to be comfortable and treated them kindly.
- In a crowded hospital, once a week, the girls helped patients who were illiterate to learn to write their names and addresses.
- All over the national organisation for 1976 we have taken a new theme: "Make clean our country, make warm our neighbour". It means not only environment of our community but also every soul of the nation will be helped to develop spiritually and morally.

FROM INDIA

Dear Guide Friends in Australia,

Twenty years ago today (2/4/56) I flew to Australia as Exchange Trainer and spent six happy and interesting months. I kept a detailed journal and am reliving those days with great joy by reading it. Each person and place is very precious and I rejoice in the memory of those days.

Twenty years have gone by but many of you have kept in touch and some have visited me. I met Australian Guide friends in U.K. and U.S.A. and some other places.

You showed me so much of Australia and its wonders that when I got back I wrote a book for Indian school children entitled "The Twins Go to Australia".

Thank you so much for your love and friendship then and through the years. May God bless you all.

Much love and all good wishes.

Yours affectionately,

GETSIE SAMUEL,
94 Seethamma Extension,
Teynampet,
Madras, India, 60018.

SANGAM

Seminar — 28th November to 7th December, 1976, for Active Guiders and Leaders 21-35 years.

Theme: "The Guider: A Major Instrument in Leading Today's Girl".

Costs — Rs. 400 (Indian rupees) and Air Fares.

Applications by 1st July to Mrs. Lesley Dwyer, C/- Headquarters.

For those who will be in India the following will also be held at Sangam:

- 18th-22nd August, 1976 — Working Together for Youth — for Adult Youth Leaders;
- 12th-22nd September, 1976 — Design in Handcraft — for Rangers and Adult Leaders;
- 3rd-13th January, 1977 — Cultural Heritage — for Rangers and Adult Leaders.

OUR CHALET

Dates of events to be held at Our Chalet are now available for anyone visiting overseas and wishing to take part — they are for the Winter Season, 19th December, 1976-13th April, 1977, and the Summer Season 1st June-6th October, 1977. Further information from Secretary to Advisers.



TRAINING PAGES

WHAT'S IN A NAME?

Mr.
Mrs.....
Miss
Ms. (Surname) (Christian Names)
Address.....
..... Postcode.....
Age..... Occupation.....

Recently I received a form similar to this and, like countless numbers of other non-earning married women, hesitated over filling in "occupation".

Grandmother was probably quite happy to write in "housewife" but did I want to go on record as just a "housewife"?

I decided to investigate the meanings of "housewife"! The Reader's Digest Encyclopaedic Dictionary defined it as:—

1. "Mistress of a family; domestic economist."
2. "Case for needles, threads etc. (ex army please note)."

Webster's Dictionary had similar definitions.

Surely my role in life — my occupation — covered more fields than this?

Taking pen in hand I compiled my own list: child care expert, finance manager, cook, washerwoman, nurse, dressmaker, cleaner, transport officer, messenger, president, secretary, member various community organisations, meals on wheels driver, sports coach, sportswoman, Sunday school teacher, etc., etc.

At this point it dawned on me that people who have a named — or regular — occupation also play similar roles within society

and that the name chosen for "occupation" really did not matter very much. The important thing was that whatever I wrote down should indicate that I had accepted responsibility for "living up" to that title.

Along with over 7 million other persons throughout the World, we have, through the making of the Guide Promise, voluntarily accepted another name, **GUIDES**. It was from one of the most famous regiments in the Indian Army, the Corps of Guides, who were renowned for their resourcefulness and courage, that the Founder, Lord Baden-Powell selected the name "Guides".

Like my investigation into "housewife" which showed the variety of names . . . titles . . . that could be slotted into it, the same applied to "Guides".

There are Brownie Guides, Guides, Ranger Guides, Patrol Leaders, Sixers, Seconds, Pack Guides, Leaders and Assistant Leaders, Commissioners, Trainers, Advisers; each accepting the responsibility of their name, **GUIDES**.

The dictionary defines a "guide" as "one who shows the Way." Think of all the guides you know, from the young Brownie to the mature adult each doing her best to "show the way" according to her own experience and capabilities. Each accepting the **responsibility** of her appointment.

Following are Statements which can refer to Sixers, Pack Guides, Patrol Leaders, Brownie Guide Leaders, Guide Leaders, Ranger Leaders, District Commissioners.

Using P.O. & R. Handbooks and Leaders' Workbooks (or just ask someone) place initials () of those to whom you think the statement refers.

- She must make and do her best to keep the Guide Promise ... ()
- It is better if she is not a Patrol Leader ... ()
- She receives training in leadership from her Guide Leaders ... ()
- She attends District Meetings and gives reports ... ()
- She keeps a record of requests for Patrol Leaders' Council ... ()
- She must realize importance of outdoor activities ... ()
- She sets high standards for herself and her group ... ()
- She has a real interest in the group she is leading ... ()
- She endeavours to be readily accessible to her Unit Leaders ... ()
- She is nominated by the Patrol Leaders' Council ... ()
- She is responsible for standards of training in her own District ... ()
- It is her responsibility to train her Pack Guide in leadership ... ()
- Her term of appointment is generally for five years ... ()
- She sees that her Six is ready for Brownie Guide Ring ... ()



- She volunteers for position at Patrols in Council meeting ... ()
- She must leave the Unit when she turns 16 ... ()
- She helps her group to progress in the Eight Point Program ... ()
- She should occasionally be asked to visit Pack ... ()
- She encourages everyone in her Patrol to contribute ideas ... ()
- It is her responsibility to say when she is ready to receive recruits ... ()

- She is generally elected by the members of her Patrol ... ()
- She considers each member as an individual ... ()
- She helps Patrol Leaders' Council assess the Eight Point Badge ... ()



- She is helping the members of her unit carry out a balanced program ... ()
- She attends Division Commissioner Meetings and gives reports ... ()
- She should be kept informed of extra Unit activities ... ()
- She is responsible for things not people ... ()
- She should occasionally be asked to visit company ... ()
- She understands the importance of all sections of the Movement ... ()
- As soon as she is appointed she may wear her stripes ... ()
- She wears a brown lanyard when attending Pack Meetings ... ()
- After she has shown that she can assist in all aspects of program she is presented with her stripes ... ()
- She helps her group choose, plan and carry out its own activities ... ()
- She is appointed by the District Commissioner ... ()
- Her Unit Account Books are audited annually ... ()
- She must be 19 years of age; Assistants 17 ... ()
- It is her responsibility to train her Patrol Leaders ... ()
- She encourages her members to run their own committees ... ()
- She partakes in all Guiding activities ... ()
- It is her responsibility to appoint Unit Auditors ... ()
- She has a real interest in the 7-11 age group ... ()

She attends Local Association Meetings
 and gives reports ()
 She sees that Six duties are carried out ()
 She should be about 13 years of age ()
 She is appointed by the Brownie
 Guiders ()
 She generally holds an eight point
 badge ()
 It is her responsibility to see that a
 proper record of Patrol monies is
 kept ()
 She is a good member of the Guide
 Company and is doing her best to
 keep the Guide Promise ()
 She must be able to keep satisfactory
 Unit accounts and other records ... ()
 She is a good advertisement for the
 Guide Company ()
 She must be neat and tidy ()
 She should be informed 6-12 months
 beforehand when Brownie is ready
 to go on to Company ()
 She ensures that individual Pack and
 Lone Guides are attached to local
 Units ()
 She encourages the formation of Tre-
 foil Guilds ()
 She is neat and tidy and is setting a
 good example for her Six ()
 She is a real friend and older sister
 to the Brownies ()



A request for her is firstly made
 through District Meeting ()
 She should hold District Meetings
 regularly ()
 She leads Patrols in Council Meetings ()
 She is a link between Company and
 Pack ()
 She keeps up to date by attending
 trainings regularly ()
 She is aware of the importance of
 self-government in the Unit ()
 It is her responsibility to find suitable
 Guiders ()

She is generally a non-technical adult ()
 She often explains Pack traditions to
 the new recruit ()
 She tells the Brownies about Company
 activities ()
 She is generally from the Company to
 which the Brownies normally move ()
 She is appointed by the Region Com-
 missioner ()
 She has a real interest in the 14-21 age
 group ()



It is her responsibility to see that
 transfer forms go through ()
 She should be asked to visit "ordinary"
 Unit meetings ()
 She should hold at least one eight
 point badge ()
 She receives her stripes at a special
 ceremony ()
 Her Warrant confirms her appointment
 to her Unit and is not transferable ()
 She recommends the issue of Warrants ()
 Her Warrant is reviewed every five
 years ()
 She is often given a "special" name.
 N.B. Like all names it must be
 acceptable to the receiver ()

By completely understanding and re-
 specting the role and responsibilities of each
 member of our Guiding team we can ap-
 preciate that although our "title", our
 insignia, our uniform may be different our
 name is still the same, GUIDES.

That name remains the same even when
 the insignia, uniform is removed.

WHAT'S IN A NAME?

If you have not been able to discover the
 answers to the preceeding send a stamped
 addressed envelope to the Secretary, Train-
 ing Department, Guide Headquarters, for
 help.

CAMPING AND PACK HOLIDAYS

Finding Staff

Attending a camp or pack holiday with her Company or Pack may provide a girl with an experience which sparks off a life time love of the out-of-doors and joy in natural surroundings.

How important are the adults who share this experience with her? Do we always give enough thought to the personalities and interests of the people we invite to act as staff? Do we provide the girls with a variety of adult stimulation? The leader of a unit is not expected to be an expert on everything, but she is expected to provide opportunities for the girls to widen their horizons. Camp and pack holiday should provide a wonderful opportunity to do this. Units who go away often, can easily fall into the trap of always using the same staff members. It is easy. It is safe. Everyone knows everyone else, BUT, where is the challenge? Where is the stimulation? Where are the new ideas?



At Training the plea is often heard — "How can I get experience on someone's camp/pack holiday, I don't know anyone?" If everyone who camps made a resolution to take one new camping adult on their staff everytime they go away, the problem would solve itself, and many new friends would be made.

Do we always look wide for our staff? In our community there are many people who, if given the opportunity, would enjoy sharing their experience with the girls. A short briefing on methods used in Guiding and these people would be excellent staff members and would provide the girls with opportunities to widen their knowledge and friendships.

If asked why they joined Guides many girls will reply "To go camping". As adults, let us make it the exciting experience they visualize, and start with thoughtful selection of staff members, both within and without the Movement.

DISTRICT DISCUSSION QUESTION



Has every girl in your District had the opportunity to attend a camp or pack holiday during the past 12 months?

If not, could you draw up a program of training and preparation which would enable all to have the opportunity in the next 12 months?

Do not forget your Division Camping Adviser is available to help you with your planning.

Our heartiest congratulations to the following Trainers on being awarded Training Certificates:

Mrs. Olive Helms — Brownie Certificate.

Mrs. Barbara Kearney — Commissioner Certificate.

Mrs. Rosalie Lawson — Brownie Certificate.

Mrs. Shirley Perry — Brownie Certificate and to Mrs. Lois Medlin — Guide Team member, North Central Region.



LEISURETIME ACTIVITIES and the eight point program

Forty-five children and ten adults in a hall and all is quiet!

Everyone is intent on handcraft activities. This scene is repeated each Monday, Wednesday and Friday for two weeks during school term holidays in Geelong Guide Hall. Outings are arranged as well as craft work.

How do these leisuretime activities for Brownies and Guides, fit into our eight point program?

Getting to Know People

As children make articles they get to know their helper, and possibly something about the brownie or guide working or playing next to them. After active games lunch is enjoyed in a hall or park (weather permitting). Children from units far apart, such as Inverleigh, Lara, Leopold, or Winchelsea, have opportunity to chat together.



Becoming a Homemaker

It may seem this point is overlooked. Sometimes we have cooking for the girls, this depends on school cooking facilities being available. Next holidays cake decorating will be on the program. However, homemakers decorate and craft activities cover this. Some use embroidery paint on a pillow slip or wall hanging. A marble chip plaque, or an arrangement of flowers could add to the decor of a room.

Keeping Fit

Active games and walks provide contrast to concentration needed for craft work. Extra drinks are enjoyed at regular times, and children are never seen eating sweets. Physical fitness is well covered by outings for swimming, gymnasium work, squash, or sauna.

Thinking for Yourself

Each girl arrives with a money allowance to pay for articles during the day, and she decides which craft she will do. She chooses her colours of paper for flowers, or raffia for dolls, fish, or octopus.



Exploring the Arts

There is wide scope for this particular point. Creating delightful figures from pipe cleaners, spatter work using pressed leaves, carving a figure of soap are all popular. Cane basket work and macrame work are enjoyed by the older girls. Flowers of nylon or paper are popular things to make, and some girls choose to learn crochet. The most popular activity is using Hobbytex embroidery paint, a versatile decorating fluid. Whether creating a mobile, making a puppet, or decorating a tray cloth, an article is made to be taken home with pride.

Giving Service

This point is not covered during the sessions. We hope the girls use the knowledge and skills they gain to help someone when occasion arises.

Keeping the Law

Most of the guide laws are kept by the children attending craft sessions, rarely is it necessary to remind a girl of her promise.

(continued on page 263)

RANGERS. (continued from page 251)

A letter from Sangam invited the girls to take part in the international "Adventure in Wildlife" session to be held at about the same time. This would give the Rangers opportunity to meet Rangers from countries other than India. They accepted the invitation in part — their main commitment being the Service Project. Miss Datoc, Guider-in-Charge at Sangam, and the inspiring force behind the Service Project, had already told them that they were to actually begin the practical work of the Project.

Eight Rangers and their two leaders set out for India. A few hours later seven Rangers and their two leaders left Sydney, bound for Bombay — one was left behind because she had lost all her travel documents. However, after a few heart-breaking hours her papers were found and she joined the rest of the group in Bombay not long after it had arrived. An exciting start to a wonderful adventure!



The next ten days were spent at Sangam. Much of the time was put into working with families in the Phulenagar Colony, across the road from Sangam. Ten families had been selected by social workers and each Ranger was allotted a family to get to know. As the Rangers worked in pairs each girl got to know two families fairly intimately. In fact, each girl got to know many more families because the people of the colony were so kind, generous and hospitable. The Rangers had to find out what could be done for these families to help themselves

to improve their own standards of education and hygiene, including clothing and growing their own food. Their work will, hopefully, be carried on further with these and other families. It provided the Rangers a matchless opportunity to learn a little about languages, religions, customs and consequent problems of India.

Absorbing as the Project work was it did not take up all of the time — much of it was spent in the swimming pool (much to the amusement of the local ladies, and the delight of Miss Datoc) and in visiting. Each day Rangers were invited to lunch or dine with families in Poona, or on picnics, or to spend the day with people who had heard they were at Sangam. Many of these kind people were "Friends of Sangam" in Poona, others were just families who wanted to share time and experiences with the Australians. Unforgettable experiences came from these generous offers . . . a long, fascinating day as guests of the officer in charge of social workers; a day spent in a gloriously beautiful rural community visiting schools, homes, farms, temples and a hospital. (At the hospital all were invited to watch a Family Planning operation and to assist if any of the Rangers was a "medical"); a Hindu wedding in all its glittering display and exciting noise, again as honoured guests unknown previously to the bride and groom; a tour of the prestigious Defence Academy; days spent with families of all kinds and in all kinds of homes — from a luxurious mansion to a maternity hospital!

The idyllic days at Sangam, full of fun, work and new experiences came to an end far too soon and it was with real sadness that the Rangers had to leave — vowing to be back.

M.C.



PHILLIP ISLAND FARM HOLIDAYS

Spacious attractive surrounds, beachfront, horse-riding, hay-rides, animals, etc. Four new log cabins. Recreation hall. Families, schools and groups. Telephone Mrs. Jeffery on (059) 56 7288.



MINI OLYMPIC GAMES

3rd and 4th September, 1976

GUIDERS: CUT THIS OUT AND PUT IT ON YOUR NOTICE BOARD.

OLYMPIC CHALLENGE TEAM

As we move around amongst our Guiding friends, it is very exciting to hear of the response to the Mini-Olympic Games. It seems girls all over Victoria are in training for the various events which appeal to them. Districts and Divisions are organizing Field days, Swimming Sports and Netball tournaments to help decide on the Region team, and, as we had hoped, many girls are taking part in these preliminary rounds.

During Region trials, it will become apparent that some girls are good at all sports. For the outstanding girls in each section we have created the OLYMPIC CHALLENGE TEAM. This idea is based on the Pentathlon, traditionally held in the Olympic Games. Members of Challenge teams will compete in three types of activities.

N.B. A member of an Olympic Challenge Team **may not** compete in any other event.

(continued from page 261)

Enjoying the Out of Doors

The bus trip to Bacchus Marsh Lion Park was a great success. Much pleasure showed on faces as slides were manouvered, a bridge crossed, or as they watched lions being fed. A barbecue meal at Werribee after a train trip and games outside, was an outing planned for the Brownie Guides.

These activities are made possible by leaders, mothers, Trefoil Guild members, and friends who are prepared to devote time to children. Voluntary workers are scarce these days so Barwon Region greatly appreciates the combined efforts of these people.

This is what "Leisuretime Activities" is all about. Not only are these activities being enjoyed at Headquarters, but they are also reaching many of our Guides and Brownies in suburban and country centres.

Brownie Events

Team to consist of four members.

1. 4 x 50 metres Freestyle relay. (Swimming).
2. 4 x 70 metres Baton relay (Athletics).
3. Flower Pot relay. Semaphore relay. (Field events.)

Guide Events

Team to consist of four members.

1. 4 x 100 metres Freestyle relay (Swimming).
2. 4 x 100 metres Circular relay (Athletics).
3. Stretcher race. Lifeline relay. (Field events.)

Ranger Events

Team to consist of two members.

1. 2 x 100 metres Freestyle relay (Swimming).
2. 2 x 100 metres Sprint (Athletics).
3. Mini Orienteering. (Field event.)

If you have any queries, please contact your own Region representative.

LEISURE TIME ACTIVITIES

For Brownie Guides and Guides at Headquarters during the August School Holidays.

Dates: Tuesday, 24th August and Wednesday, 25th August.

Charge: \$2.50 per day (9.30 a.m.-3.00 p.m.)

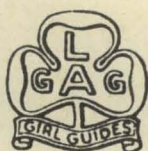
Activities include basketry, clay modelling, enamelling, puppetry, etc.

Closing date — 2nd August. **NO LATE APPLICATIONS ACCEPTED.**

Collect application forms from reception desk at Headquarters, or by post from Mrs. M. Pritchard, 16 Comer Street, East Brighton, 3187. Please enclose stamped, self addressed envelope.

Adults who joined the activities as helpers during the last school holidays thoroughly enjoyed the experience, a further appeal is made for helpers — no special skills required — please contact Marguerite Pritchard (92 3708) if you can help in this way.

LOCAL



ASSOCIATION SECTION

Thought for the Month

Nothing lasts longer than a happy memory.

Two Fund-raising Ideas

LEYLAND BROTHERS

A letter from Leyland Brothers Films gives details of their Screening Service available for fund-raising projects.

The films, which include "Trek to the Top", "Overland Trail" and "Mighty Murray", are 16 mm colour with sound, and are each of 50 minutes duration. They are based on the travels and adventures of the Leyland Brothers in remote parts of Australia. They supply the projectionist and all equipment, and screen any two films of your choice.

Admittance charges are split on a 50-50 basis with a minimum payable of \$30.00. They can be contacted at 8 Sydenham Street, Hightett, 3190, or by telephone 598 5639.

FUND-EX

Fund-ex Australia Pty. Ltd. has advised that an Autumn Catalogue has been produced illustrating a wide range of merchandise which can be purchased and re-sold by fund-raising groups, such as Local Associations.

This fund-raising activity proved very successful with many groups last year, and as there are many more items available this year this could be a very worthwhile project.

Those interested in obtaining this Catalogue can contact Fund-ex Australia Pty. Ltd., P.O. Box 153, Moorabbin, 3189, or telephone 95 8755.

Lones Local Association

Members regret the passing of one of the original members of the Lones Section Auxiliary, now called the Lones Local Association.

Mrs. Gwen Hull, who originally was a member of Sunshine Local Association started helping the Lones in 1940. She was Secretary for a short time and was a very willing worker until her death at the end of last year. She will be missed very much.

Fairies at Box Hill —

Do other Districts have fairies at the bottom of their Guide Hall gardens? We do at Box Hill.

The Local Association was faced with the problem of very long grass, a mountain of cartons from bottle collecting, and our regular grass cutter had taken another job.

One father cut the grass in front of the hall for us. We employed a lad to keep this tidy and wondered what could be done about the back. It really was a mess.

Then the good turns began — all the grass was cut, cartons burnt and all left beautifully tidy.

We have some very good helpers at Box Hill, but enquiries amongst our "regulars" have not revealed the identity of this good fairy. Our sincere thanks are given for the many, many hours of work undertaken to make our grounds so tidy.

M. J. H.



Parent Participation

Q.: How to involve more parent participation? How to get more mothers interested in attending Local Association meetings, or is it enough to get good support for fund-raising activities? Parent apathy? How do we make parents aware of what the Local Association contributes to Guiding?

A.: We realise it is becoming increasingly difficult to get more Mothers to attend Local Association meetings and fund-raising functions, due to the fact that so many women are joining the work force, either full-time or part-time, and as a result they do not have time for their jobs, their homes and families — and to help with their children's outside interests. This is a pity both for their children's sakes and for the sake of the Guide Movement, but this is the way of present times.

However, the best way to attract the help of mothers at home or with part-time work, is by the personal approach. It has proved successful in many cases when the Local Association office-bearers and the District Commissioner have made personal contact with mothers of new Brownies and Guides and told them a little about Guiding and how they can help their daughters. These mothers can be invited to a morning coffee meeting or a fund-raising luncheon, where they might hear more about Guiding and how the Local Association helps Guiding in their District.

Another successful approach in some areas has been made by sending out questionnaires to parents of all Brownies, Guides and Rangers in the District, and to parents of new Brownies and Guides as they come into Guiding, asking them to state how they can help Guiding in their Districts — as leaders, unit helpers, testers, with transport, catering or in any other way. These forms are best collected back personally a week or two later. This approach has given several Districts a healthy list of helpers in different fields and has proved very successful, and of course, the more helpers there are, the less each one is expected to do. They may not all attend the regular meetings, but they are valuable in other ways. If parents are given specific jobs to do, they are more likely to react favourably when asked. If the full-time working mothers are unable to help actively, they could be asked if they would like to make a donation towards Local Association funds, and this is their way of helping Guiding in their Districts.

BADGERS CLUB

The Badgers Club, a group of Scouts and Guides interested in collecting both metal and cloth badges is compiling a badge history of both movements. Any person interested or with badges of interest should contact the Secretary, P.O. Box 38, Fairfield, Victoria, 3078.

FOR SALE

Guider's skirt and jacket. Size 40B — \$20.00. Please contact Mrs. A. R. Liversidge, 13 Noga Avenue, East Keilor, 3033. Telephone 337 7977.

Visit our Guide Home

Looking for a new way to have your Local Association meeting? Come into Guide Headquarters and be shown over our beautiful Guide home, and then hold your Meeting in one of the Training Rooms.

Did you know that Local Association members are welcome to drop into Headquarters at any time during business hours, and have a cup of tea or coffee in the Lounge while waiting for a friend, or filling in time before catching a country train or bus home.

There are hostesses who would like to welcome you and take you on a conducted tour. If you are interested, please book a date with Mrs. J. W. Draper, 35 Albury Road, North Balwyn, 3104. A stamped, self-addressed envelope would be appreciated.



Recipe Corner

LAMB PILAFF

1 lb. boned shoulder lamb, 2 onions, 3 ozs. butter, 1 cup rice, 1 cup beef or lamb stock, salt and pepper, 1 teaspoon tomato paste, ½ cup plumped seeded raisins. Saute cubed lamb and sliced onions in butter till meat is brown and onions golden. Add rice and cook, stirring until rice is coated with butter. Add stock, seasoning and tomato paste. Cover and cook slowly for 40 minutes, or until meat is tender and rice is fluffy. Finally stir in raisins just prior to serving. Serves 4 to 6 people.



Please send articles for this Section to Mrs. D. O. Oldfield, 4 Embling Road, Malvern, 3144.



SERVICE OPPORTUNITIES FOR GUIDES

(Continued from Page 255)

4. Narrow Places

For narrow aisles, doorways and other places where it is difficult to walk two abreast, start to change your position by making a definite move with your arm backwards and over to the centre of your back.

She responds by straightening out her arm and stepping directly behind you. Now you are in single file, one full pace apart. Her arm must remain fully extended to prevent either of you from tripping over the other's feet.

When you have passed through the narrow place, return your arm to its normal position (by your side). She responds by returning to her normal position.

5. Opening Doors

She must be on the side towards which the door opens (the same side as the hinges).

As you are approaching the door, say to her: "We are coming to a door. It opens towards us and to the left."

She then knows to be on your left side and if she is not already on your left, she changes over.

Take the doorknob in your right hand and open the door.

Ask her to support and shut the door. Release your hold on the doorknob. She holds the door until you have both passed through, then shuts the door.

For doors opening away from you, the procedure is the same.

For doors opening to the right, the directions should be reversed.

6. Stairs

Tell her you are approaching stairs and whether you are going down or up. Always approach stairs and curbs at right angles and stop as you reach them.

If she is not on the side with the hand-rail, tell her and let her change sides if she wishes to grip it. Always protect person by being in front — don't let them move by your side and put toe on step until they are well oriented. Tell them to feel for step as you step down onto it, which gives extra clues as to where the step is. Then you both proceed together in rhythm.

Stop when you reach the end of the stairs. This indicates to her that you have reached the bottom (or top).

Until she is quite familiar with your signals, you should explain to her where you are going and what you want her to do.

7. Getting into a Chair

Place the person's hand on the back of the chair.

You may like to mention which way the chair is facing. From there on most people will manage themselves.

8. Getting into a Car

Place person's hand on door handle giving indication of which way car is facing. When door is opened, free hand contacts edge of car roof and can then be brought down to contact back of car seat to sitting area which is cleared.

(From The Guide Dog Magazine.)



FOUND

- At Britannia Park — Lady's watch, square, metal band, engraved "GALE". Owner please telephone D. Holtz at 82 4661.
- At Donvale campsite in Ghera shed — green canvas tent and white screen; in Norea shed — bag of screening, pegs and mallets. M. Clucas (telephone 83 4945).
- At Brownie Cottage after April Pack Holiday training — 1975 Personnel Book (no name), red ring and serviette, yellow ring and serviette, red and white check apron. Please collect items from box near stairs at Headquarters.

PASSPORT TO ADVENTURE

East Metropolitan Region held an Outdoor Field Day at Wonga Park.

There were five main themes, or activities, and our "Passports to Adventure" told us which activity to do at what time in a certain order.

Leaders from each division supervised the challenges which were:

- Exploring the arts — Red — Japan.
- Homemaker — Aqua — France.
- Keeping Fit — White — Canada.
- Enjoying the Out-of-Doors — Yellow — Sweden.
- Thinking for Yourself — Purple — Australia.

Our division, Manningham Road, was in charge of the "purple" challenge. After finishing with one activity the passport had to be stamped to say that you had been through that "country".

It was fun to see your friend tackling semaphore, struggling through the "blind maze" and through the swinging tyres, or trudging back from an orienteering course.

Every district had its own home ground for lunch and afternoon tea. The weather was perfect until the end of the last challenge, then it poured with rain. Campfire, held indoors at the end of the program (the hall was overflowing with four hundred or more Guides) was led by Miss P. Barr, State Secretary. Most Divisions presented a song from their country, and there were some old favourites too.

We thank many people for a terrific but exhausting day.

JOANNE PILENS,
4th Doncaster Unit.

BADGE AUCTION

The Badgers Club (Victorian Branch) will hold an Auction of Scout, Guide and other badges on 18th July, 1976, at the Girl Guide Headquarters, Melbourne.

Come along and inspect and bid for badges and other Scout and Guide articles. Write to the Badgers Club and submit items for Auction.

Sale Catalogues are available from Mr. F. Wilson. Please send three eighteen cent stamps with your order to P.O. Box 38, Fairfield, Victoria, 3078.

HORSHAM'S 50 YEARS

The 50th anniversary of Guiding in Horsham was celebrated with a family picnic at Centennial Park, Mt. Arapilies. The day was mild and sunny, ideal for Brownie and Guide activities outdoors.

The Shire President brought us Civic Greetings and good wishes on behalf of the City of Horsham and the Shire. We were fortunate in having three former District Commissioners to help us celebrate, also two members of the first Guide Company, commenced in 1926. There was much fun and laughter and "do you remember?" after viewing old photographs collected for the day.

A Celebration Cake, made by a Ranger Guider was cut by a former District Commissioner and our youngest Brownie. After a barbecue tea under the pine trees, Camp Fire which included a "fun" item from members of the Local Association, brought the Celebration to a fitting climax and so we commence our second 50 years of Guiding in Horsham.

HEATHER GROSS.
District Commissioner.

GUIDE FOOTBALL UMPIRE

Lee Francis, one of the girls in our company, has become the first female umpire of Australian Rules Football. In an interview with the "Geelong Advertiser" Lee said it would be fun, different and a way of meeting people.

Lee will umpire "under 17" matches in the Geelong and District Football League.

JENNY STONEHOUSE,
1st Highton Guide Company.

WANTED!!

Someone with an endorsed driving licence willing to join as driver for the Bushcraft Tour — 28th August to 4th September — visiting Barmah Forest and Hattah Lakes. If a voluntary driver can be found cost of the tour can be kept reasonably low. Please ring Training Department, 63 7911 extension 18 if you can help.

CHILDREN'S WEEK — 1976 1st-8th AUGUST

Victoria is to have a Children's Week this year, when the focus will be on children within the family unit. The slogan will be "Fun with the Family".

The Guide Association has accepted the invitation to participate in this week, and all districts are asked to join in activities arranged by their local councils. Will you please see that Guiding is well represented in as many avenues as possible? Wear your badges and uniforms, plan to have open meetings which will involve parents, and go to several functions to join with other people.

Within the next month Local Councils will receive a Children's Week Kit, and are asked to make the contents known to their municipalities by the local papers, etc., and request help in organising activities. If you can help please do so . . . Suggestions like this . . . a family walk, barbecue, picnic, paint-in, pottery, folk dancing, square dancing, cycling, drama, etc., etc. Plan to get the people in your street interested in taking part.

Remember that we belong to the biggest youth organisation in the world, and children are our best public relations. Make sure they are seen during Children's Week when Guiding shows that it is community minded and that there is something in the movement for all members of the family.

For those who wish to arrange displays. Pictures, films, slides, etc, may be borrowed from the Public Relations Department, Guide Headquarters.

HAND OF FRIENDSHIP

Dear Matilda,

I would like to thank all Guiders, Guides and Brownies of Springvale and Springvale South Districts for hospitality and kindness shown to me on my recent holiday in Australia.

This is more proof that Guiding is a world-wide family and that the hand of friendship extends through thousands of miles.

Thank you all.

MARILYN STONE,
4th Tufnell Park, Brownie Pack,
North London.

DONVALE CAMPSITE BADGE

Did you know that a ribbon badge depicting the red toadstool found on the campsite, is now available for 15 cents plus postage from Mrs. Ridgewell (telephone 878 7739) or Mrs. Clucas (telephone 83 4945)? Campers and others may buy.

ROWALLAN BOOKINGS

Please note that Mrs. Jean R. Fisher, 11 Walker Street, Moonee Ponds, 3039 (telephone 37 7386) is now the Booking Secretary for Rowallan Campsite.

BROWNIE REVELS

Brownies and Guiders of Port Phillip had a wonderful day out at Brownie Revels. When we reached the park we were changed into Aborigines. This was done by eating a wicketty grub (a lolly one, of course). Then, for the next few hours we enjoyed many wonderful activities we associate with our brown skinned sisters. We made necklaces to ward off evil; we chanted a hunting song and painted and played their musical instruments. We also had some very exciting people with us — our Commissioners and our Brownie Adviser, Mrs. Cooper, and Mrs. Richardson, Editor of Matilda.

Our day finished with everyone coming together playing the instruments we had made and chanting the song we had learned. It was a rousing finish to a WONDERFUL DAY.

As we left the park we again ate a wicketty grub, to change us back to Brownies and Guiders. We journeyed safely home full of happy memories of our Revels.

BROWNIE LEADER.

PETS AT HOLIDAY TIME



Holidays are over again and thousands of tourists are streaming back to city homes and busy workaday lives.

In the newspaper "lost and found" columns there have been sad notices seeking information on missing dobermans, dachshunds and dalmatians.

Cats, galahs, budgerigars and even horses have been lost while their owners have been holidaying. Animal hospitals and welfare agencies have been kept busy receiving lost pets and treating those injured or neglected while their owners have been absent.

Where was YOUR pet while you were on holiday?

Hopefully some kind neighbour, or perhaps a kennel service looked after it for you. But, unfortunately, many folk do not consider animals worth thinking about and the creatures are forced to break free from yards or sheds to seek food, water, and companionship.

Many animals have come to us in this way, lost or simply deserted, dumped by thoughtless owners. Faithful old Puddles came to us like this. She arrived as a tiny terrified puppy, having been belted, kicked, beaten with brooms and almost run over on the highway before we took her in.

Trixie, our "star boarder", DOES have a loving owner who cares enough about her pet to ask us to act as "dog-sitters" until her new home is fenced and safe for the excitable little terrier.

Perhaps you are thinking of getting a pet this year? Before you decide, do think carefully about whether it will fit in with your family and surroundings, and whether you will have enough time to take proper care of it. ALL pets need time . . . time to be fed . . . to be cleaned . . . to be admired, petted or played with. In short, THEY need companionship just as much as humans do.

A female cat or dog is bound to be a nuisance in the breeding season, so unless you intend to breed, it would be wise to have your pet spayed to prevent unwanted puppies or kittens arriving.

If you live in a flat and can not have animals, perhaps a goldfish would make an interesting pet? Or perhaps even an "ant farm" . . . providing you do not overload it with too many ants. You would find many hours of fascinating pleasure with an ant farm and it costs very little to feed six ants . . . and I have never seen an advertisement for a lost ant!

ANNE L. FRASER.



SINGERS . . . PIANISTS . . . GUITARISTS

Are you looking for ways to use your talent?

The Guide Choir, open to Guides, Rangers, Guiders, Commissioners, Local Association and Trefoil Guild members, meets at Headquarters from 5.30 p.m. to 7.00 p.m. on alternate Tuesdays and needs new members to cover recent resignations. Choir activities include performing at weddings, hall openings, annual meetings etc., both Guiding and otherwise.

Further information may be obtained from Mrs. Elaine Clarke, telephone 347 2040 (A.H.), Mrs. Joyce Turner — 314 4536 or Suzanne Hill — 60 0221, ext. 435 or 51 7193 (A.H.).

TRAINING CALENDAR

COMMISSIONERS AND UNIT LEADERS with the necessary experience are welcome to apply for **ANY** training. Applications should be sent **prior to the closing date** and be **accompanied by the training fee and a stamped self addressed envelope**. **Early application for all trainings is recommended.**

STAGE 1 TRAINING

Horsham — Weekends 10th-11th July and 31st July-31st August — time 10.00 a.m. to 4.00 p.m. Applications to Miss D. Pearse, "Edgbaston", Donald, 3840 by **21st June**.

Mildura — Weekends 31st July - 1st August and 18th-19th September — time 10.00 a.m. to 4.00 p.m. Applications to Mrs. A. Smith, 10 Barry Avenue, Mildura, 3500 by **9th July**.

Moorleigh — Weekends 10th-11th July and 14th-15th August — time 10.00 a.m. to 4.00 p.m. Applications to Mrs. A. Watsford, P.O. Box 50, East Bentleigh, 3165, by **22nd June**.

Thorpdale — Weekends 17th-18th July and 14th-15th August — time 10.00 a.m. to 4.00 p.m. Applications to Mrs. K. Marshall, 29 Hearn Street, Drouin, 3818, by **26th June**.

Wangaratta — Weekend 11th-12th September — time 10.00 a.m. to 9.00 p.m. Saturday and 9.30 a.m. to 5.00 p.m. Sunday. Applications to Mrs. D. Hamilton, "Hamilton Park", South Wangaratta, 3677 by **23rd August**.

STAGE 2 TRAINING FOR WARRANTED LEADERS

Note: Stage 2 training is aimed at helping you directly with your leadership role. Please assess your needs and list them on application form.

Cardross — Weekend 17th-18th July — time 10.00 a.m. to 8.30 p.m. Saturday and 9.30 a.m. to 4.30 p.m. Sunday. Note: If hospitality is required please notify Training Adviser immediately. Applications to Mrs. A. Smith, 10 Barry Avenue, Mildura, 3500 by **26th June**.

Pyramid Hill — Weekend 7th-8th August — time 10.00 a.m. to 9.00 p.m. Saturday and 9.30 a.m. to 5.00 p.m. Sunday. Applications to Mrs. R. Wilkins, P.O. Box 492, Bendigo, 3550 by **19th July**.

Shepparton — Tuesday and Wednesday, 28th and 29th September and 19th-20th October — time 10.00 a.m. to 4.00 p.m. Applications to Mrs. M. Murphy, 73 Balaclava Road, Shepparton, 3630 by **7th September**.

PACK HOLIDAY TRAINING

Riddells Creek — 9th, 10th, 11th July — time 6.00 p.m. Friday to 3.00 p.m. Sunday. Applications, stamped addressed envelope and \$9.00 fee to Mrs. A. Watsford, P.O. Box 50, East Bentleigh, 3165 by **18th June**.

Tallygaroopna — Weekend 17th-18th July — time 9.30 a.m. to 9.00 p.m. Saturday and 9.30 a.m. to 4.00 p.m. Sunday. Note: Bring cut lunch Saturday and Sunday. Evening meal provided Saturday. Applications, stamped addressed envelope and \$2.00 fee to Mrs. M. Murphy, 73 Balaclava Road, Shepparton, 3630 by **28th June**.

RESIDENTIAL TRAINING WEEK

Date 23rd-29th August. Subjects to include Stages 1 and 2, Pioneering and Orienteering, Learning Games, Ceremonial and Creativity. Note: Indoor accommodation only. Applications, stamped addressed envelope and \$32.00 training fee to the Training Department, Guide Headquarters by **19th July**.

CAMPCRAFT TRAINING

Rochester — Weekends 7th-8th August (indoor), 11th-12th September, 9th-10th October and 13th-14th November. Further information available from Mrs. M. Murphy, 73 Balaclava Road, Shepparton, 3630.

BUSHCRAFT TOUR

Date 28th August to 4th September. The tour will include visits to Barmah Forest and Hattah Lakes. Cost — approximately \$80-\$85. Note: To facilitate hiring of bus, buying of food etc., it would be appreciated if applications could reach Training Department as soon as possible. **Application forms available from Training Department, Guide Headquarters.** Closing date **19th July**.

CEREMONIAL and PATROL LEADER TRAINING

Golden Square — Saturday, 3rd July — 12.30 p.m. to 4.30 p.m. — Guide Hall, Bond Street. Applications, stamped addressed envelope and \$1.00 to Mrs. R. Wilkins, P.O. Box 492, Bendigo, 3550, by **21st June**.

Kerang — Saturday 17th July — time 12.30 p.m. to 4.30 p.m. Applications, stamped addressed envelope and \$1.00 fee to Mrs. R. Wilkins, P.O. Box 492, Bendigo, 3550 by **26th June**.

SPECIAL SUBJECTS for RANGER GUIDERS

Headquarters 7th-8th August — time 10.00 a.m. to 4.00 p.m. Applications (including requests), \$1.50 and stamped addressed envelope to Training Department, Guide Headquarters by **19th July**.

GUIDE KNOWLEDGE

Headquarters — 10th July — time 10.00 a.m. to 3.30 p.m. Applications, stamped addressed envelope plus \$1.00 training fee to Training Department, Guide Headquarters by **20th June**.

SAFETY and YOU — GUIDE GUIDERS ONLY

Headquarters — Tuesday 20th July and 10th August — time 7.30 p.m. to 9.30 p.m. Applications plus \$2.50 to Mrs. F. Ludbrook, 5 Curnola Avenue, Doncaster, 3108 by **30th June**. Note: 1 leader and 2 guides from each company to attend.

PATROL LEADER TRAINING

Broadford — Saturday, 7th August — time 10.00 a.m. to 4.00 p.m. Note: **Leaders and Patrol Leaders to attend.** Applications and \$1.50 fee to Mrs. M. Gorman, 33 Batten Street, Seymour, 3660 by **15th July**.

CONGRATULATIONS to the recipients of the following:

Guiders Long Service

(30 years) Mrs. I. R. Oatley, Blackburn; Mrs. J. Miles, Geelong.

(20 years) Mrs. B. Gifkins, Blackburn; Miss F. Bailey, Mt. Eliza.

(10 years) Mrs. J. Longmuir, Cobram; Mrs. B. Thomas, Bentleigh; Mrs. A. Bennett, Blackburn; Miss H. Cathcart, Laburnum; Mrs. F. S. Grimwade, Broadford; Mrs. S. Prince, Fairfield; Mrs. J. Giblett, Timboon; Mrs. F. J. Jervies, Macarthur; Mrs. J. Anderson, Chadstone; Mrs. E. Cox, Chadstone; Mrs. J. Lamond, Chadstone; Mrs. M. Mullins, Diamond Creek; Mrs. C. Marshall, Mordialloc; Mrs. P. Townson, West Heidelberg; Mrs. M. J. Nicholas, Longwarry; Mrs. N. Toner, Hampton Park; Mrs. D. Leigh, Doncaster.

Local Association Long Service

(10 years) Mrs. J. Sharp, Dandenong; Mrs. M. Jeffrey, Dandenong; Mrs. B. Ansell, Dandenong; Mrs. A. Jordan, Diamond Creek; Mrs. Waldren, Diamond Creek; Mrs. J. Willmott, Dunolly; Mrs. R. Gibson, Avondale Heights; Mrs. J. Garside, East Preston.

Combined Long Service

(30 years) Mrs. M. Brumley, Dandenong.

(20 years) Mrs. J. Goodbun, Murrabit.

(10 years) Mrs. M. Ziino, Fairfield; Mrs. E. Allen, Fairfield; Mrs. D. Bullock, Fairfield; Mrs. C. Keltie, Springvale; Mrs. B. Lardner, Dingley; Mrs. B. Jenkins, Glen Iris; Mrs. M. Oakes, Chadstone; Mrs. B. Hocking, Mildura South; Mrs. P. Gunn, Thorpdale.

Trefoil Guild Long Service

(10 years) Mrs. L. Robson, Mildura; Mrs. J. Robbins, Mildura; Mrs. H. Bowring, Mildura.

☆ ☆ ☆

Thanks Badge

Bulla Shire Council; Sunbury Building Fund Committee; Mr. and Mrs. Rackshaw, East Bentleigh; Mr. W. Dean, Mt. Waverley; 1st Murrabit Pack.

Except for articles where copyright restrictions are indicated, material in "Matilda" may be reprinted in Guide and Scout magazines without prior permission. A credit line would however be appreciated.

APPOINTMENTS AND WARRANTS

A warm welcome is extended to the following:

Region Commissioner

Mrs. W. J. B. Pollock, South Eastern.

Division Commissioners

Mrs. J. J. Robertson, Latrobe; Mrs. K. Sinnott, Camperdown.

District Commissioners

Mrs. D. Woodcock, Footscray; Mrs. J. M. Parker, Quambatook; Mrs. R. H. Rau, Westmeadows; Mrs. S. L. Breakey, Malvern (Acting).

Ranger Guiders

Mrs. B. W. Graham, Highton Rangers.

Guide Guiders

Mrs. H. Riordan, 2nd Chadstone; Mrs. M. J. Mynard, 1st Trafalgar; Miss M. Dietrich, 3rd Vermont; Mrs. K. Brodie, 1st Springvale; Mrs. M. Pethebridge, 1st Mansfield; Mrs. R. J. Rowney, 1st Timboon; Miss J. M. Fookes, 3rd Morwell; Mrs. E. J. Arnold, 1st Edenhope; Mrs. M. W. Brammer, 2nd Kyabram; Miss G. Higgs, 1st Kyabram; Mrs. A. Bradbrook, 2nd Koonung Heights; Mrs. F. J. Elliott, 2nd Mooroolbark; Mrs. R. Simpson, 2nd Newborough; Mrs. H. R. Stewart, 3A Geelong; Miss J. Priest, 1st Swan Hill.

Assistant Guide Guiders

Miss J. Lucas, 4th Malvern; Miss J. F. Weaver, 2nd Deer Park; Miss S. J. Peart, 1st Lara; Mrs. T. Yeung, 1st Springvale; Miss A. Fraser, 1st Tempy; Miss S. A. Williams, 2nd Morwell; Miss K. Larson, 2nd Red Hill; Mrs. R. H. Draper, 2nd Mooroolbark; Mrs. R. J. McCarthy, 1st Melton; Miss D. A. Caldwell, 1st Pascoe Vale; Mrs. D. J. Pearce, 1st Chilwell.

Brownie Guiders

Mrs. B. Sloan, 3rd Syndal; Mrs. R. L. O'Toole, 2nd Cohuna; Mrs. A. F. Madden, 9th Geelong; Mrs. K. J. Ellis, 2nd Scoresby; Miss C. Harman, 1st The Basin; Mrs. D. R. Barnes, 1st Whorouly South; Mrs. R. F. Porter, 1st Timboon; Mrs. J. H. Lennerth, 1st Edenhope; Mrs. B. L. Warrell, 3rd Waverley North; Mrs. H. A. Black, 1st Charlton; Mrs. A. Guascoine, 2nd Echuca; Mrs. B. McDonald, 1st Bennettswood; Mrs. D. W. Bumford, 1st West Melton.

Assistant Brownie Guiders

Mrs. M. Healy — 1st Mildura; Mrs. G. Van Aken — 3rd Syndal; Mrs. J. Vassallo — 4th Springvale North, Miss B. Harman — 1st The Basin; Mrs. A. Le Lievre — 2nd Wangaratta; Mrs. W. L. Jackson — 1st Whorouly South; Miss J. Bridges — 1st Harcourt; Miss D. Gardiner — 1st Malvern (Extension); Miss L. J. Brown — 2nd North Cheltenham; Mrs. I. R. Cook — 3rd Heyfield; Miss J. Becker — 3rd Highton; Miss M. L. Mongan — 5th Pascoe Vale; Mrs. M. P. Kellett — 1st Swan Hill; Mrs. M. A. Brown — 1st Mt. Macedon.

REGISTRATIONS

3rd Lower Plenty Pack; 1st Barham Company; 1st Bonnie Doon-Merton Pack; 2nd Rosebud Company; Dandenong North (Ullakulu) Rangers; 4th Echuca (Extension) Rangers; 1st Quambatook Company.

RESIGNATIONS AND RETIREMENTS

We acknowledge with gratitude the services given by the following, whose Warrants have been returned:

Region Commissioner

Mrs. A. K. Sutherland, Acheron.

Division Commissioners

Mrs. M. J. Main, Tambo Valley; Mrs. B. Larbey, Box Hill North.

District Commissioners

Mrs. L. J. Hadenfeldt, Sunshine; Mrs. I. R. Brown, Malvern; Mrs. R. Gosling, Rainbow; Mrs. S. F. Jenkins, Glen Iris; Mrs. M. Harvey, Hadfield; Mrs. R. G. Ridout, Dallas; Mrs. K. W. Colliver, Edenhope.

Assistant Ranger Guider

Mrs. B. W. Graham, Highton Rangers.

Guide Guiders

Miss J. Phillips, 1st Armadale; Mrs. J. Brisbane, 1st Stratford; Miss M. Robinson, 1st West Heidelberg; Mrs. L. Powell, 1st Wedderburn; Mrs. A. Ingelfinger, 1st Trafalgar; Mrs. R. G. Hawkins, 2nd Deer Park; Mrs. R. W. Llewellyn, 1st Heyfield.

Assistant Guide Guiders

Mrs. M. J. Mynard, 1st Trafalgar; Miss M. Dietrich, 3rd Vermont; Mrs. B. E. Dougherty, 1st Colac; Mrs. G. B. Rogerson, 2nd Benteigh; Mrs. J. L. Quinlivan, 3rd Highton; Mrs. A. Bradbrook, 2nd Koonung Heights; Mrs. R. Simpson, 2nd Newborough; Mrs. K. A. Giffin, 1st Elmore.

Brownie Guiders

Mrs. M. McCarthy, 1st St. Leonards; Mrs. B. A. Smith, 3rd Brandon Park; Mrs. A. Mason, 2nd Brandon Park; Mrs. R. H. Ware, 1st Brighton Beach; Mrs. K. H. Porter, 2nd Scoresby; Mrs. J. Imlach, 2nd Moorabbin South; Mrs. P. G. McConville, 1st North Fawkner; Mrs. J. D. Warburton, 2nd Sandringham; Miss S. Scott, 1st Lockington; Mrs. W. Grieve, 1st South Croydon.

Assistant Brownie Guiders

Mrs. B. Sloan, 2nd Syndal; Mrs. K. J. Ellis, 2nd Scoresby; Mrs. B. T. Walsham, 1st Waverley North; Mrs. V. Moran, 1st Brandon Park; Mrs. B. A. Dyson, 5th Boronia; Mrs. J. E. Pritchard, 2nd Scoresby; Miss P. Jones, 2nd St. Albans; Miss H. R. Lawry, 1st Trafalgar; Mrs. A. Guascoine, 2nd Echuca; Mrs. D. W. Bumford, 1st West Melton; Mrs. C. W. Metcalf, 2nd South Croydon; Mrs. J. M. Munro, 1st Beac.

THE SHOP GUIDE

"Jane"	\$0.65
(A delightful heart-warming story of how handicapped Jane joined the Brownies.)	
The Brownie Annual	3.95
The Brownies and the Wedding Day	3.25
The Brownies in Hospital	2.60
Air Day for Brownies	2.20
Lucy's Brownie Road	3.25
Lucy's Last Brownie Challenge	2.20
The Patchwork Pack	2.20
The Brownies at the Zoo	2.20
The Brownies on Television	2.20
The Brownies and the Fire	2.20
The Lenderhand Brownies	3.00
Penny's Pack Holiday Adventure	2.50
Pow-wow Stories	0.95
The Story of Dotor Dolittle	0.65
The Magic Pudding	1.50
The Lion, the Witch and the Wardrobe	1.15
The Magician's Nephew	0.85
Longtime Passing	1.35
The Professor and the Possum	1.95
Ash Road	1.00
Margaret becomes a Doctor	2.80
First Job	2.95
A Year Book of Modern Heroes	2.15
The Chief — The life story of Robert Baden-Powell	8.25
Scouting for Boys — Abridged Edition	0.65
The Story of our Christmas Customs	0.60
Australian Legendary Tales	0.70
The Dreamtime	4.95
The Dawn of Time	4.95
The First Sunrise	4.95
Dreamtime Heritage	4.95
Alterations to Prices	
Commissioner's Beret	\$11.25
Brownie Beret and Badge	1.95
Guide Beret	1.75
Guide Beret Badge	0.45
Brownie Belt	1.65
Pouch	1.90
Guide Belt	2.65
Gem Duplicator	11.25
Company Roll and Subscription Book	0.42

