

(15-2-78)  
16-2-78

MSB Jan-Feb  
1978

JANUARY-FEBRUARY, 1978

VOLUME 55 NUMBER 7

# Matilda



GIRL GUIDES ASSOCIATION OF VICTORIA



*Every day brings a new challenge as this small Brownie discovered at the Kite Flying and New Games Day.*

See details on page 193.

(Photograph — G. Thomopoulos)

### **In this issue . . .**

	Page
Archives	208
Baden Powell Homes	210
Britannia Park	195
Brownie Jubilee Book	204
Commissioners' Conference Program	211
Diary Dates	196
Guide Section News	205
Guide Shop	214
International Friendship	187-190
Know Your Regions	209
Local Association Section	201-203
Notices	191, 194, 203, 211, 212, 214, 215
Personnel Changes, etc.	215
Ranger Notes	206, 207
Reporting from Russell Street	184
State Commissioner's Letter	183
Supplementary Activities	192
Thinking Day	185, 186
Training Calendar	213
Training Pages	197-200



## From our State Commissioner

Dear Everyone,

A very happy New Year to you all — and welcome to the new Guiding Year. I hope you have all had happy, relaxing holidays and now feel ready to face with renewed vigour, all 1978 has to offer — study, work or play.

The weekend before Christmas we had members of the Donessen Rangers staying in our Shearers' Quarters. They invited us to a Christmas Party on Saturday night and the ten of us had great fun. Martin's comment was "I bet this finds its way into Matilda!"

I wonder how many of us have made New Year resolutions — and how many of us are likely to keep those resolutions. I have a very long list — and I hope that this year I will achieve some of the things which have been on my list for the last few years.

Some of you have, no doubt, had a complete break from Guiding — but Victorian Guiding has been busy over the holidays. The Australian Training and Sections Conference held at St. Margaret's School, Berwick was a very happy and stimulating time. The Chief Commissioner, Miss Mary Lambe, A.M., opened the Conference and I am sure many decisions made will be of lasting benefit to Guiding in Australia. My congratulations and thanks go to all those Victorians who worked so hard to ensure the success of this Conference — especially Nan Squire, G.I.C. and my Assistant, Lysbeth Turnbull who was Q.M.

Some years ago when in Vancouver, British Columbia, I visited a music camp held at Tsoona — one of their very lovely camp sites. Ever since then I have wanted to hold a music camp here and in January, 1978, we did, thanks to our Supplementary Activities Committee. The "Strolling Players" Camp was a great thrill and I am sure that all learned

there will be used to great advantage in the 1978 National Festival of Song.

1978 is to be the year when we promote the Guide Section. So many activities will be geared to these girls.

For some time now we have felt that our young members should be more involved in decision making. I am now suggesting that members of the Guide Section may like to meet together with me and other members of the Headquarters team to talk about the things they would like to see Guiding do. Guiders, would you please discuss this with your girls and then those girls who like the idea and are interested, please send your names, ages and addresses to me at Headquarters. When we see how many girls are interested we will work out a plan of action.

Perhaps when discussing this you would also think about the possibility of a State-wide "Good Turn".

Some ideas suggested are—

Special equipment for physically handicapped youngsters.

Mobile library with equipment to visit families who care for retarded children at home.

Mobile language library to assist ethnic groups in the community.

Provide equipment for a Coronary Care Unit.

Please let me know if you like this concept and also send me any projects you may care to suggest.

As you read this you will be in the midst of your preparations for Thinking Day 1978. It is a Thinking Day tinged with sadness — as this is the first one we celebrate without the World Chief Guide. What a wonderful example she has left to our very large family and on this very special day as we think of those members spread throughout the free world our heartfelt thanks go to the Founder and the World Chief Guide for this wonderful game they have bequeathed to us.

A very happy Thinking Day to you all.

With love and best wishes,

*Joan E. Grimwade*

# REPORTING FROM RUSSELL STREET



## LONE ADVISER

We are sorry to have to tell you that our Lone Adviser, Mrs W. H. Samman, has had to resign for personal reasons. Jill worked very hard indeed for the welfare of this small but worthwhile section of our Guide family, taking a great personal interest in each and every member, and we are sad to lose her. Thank you, Jill, for all you have done for our Lones.

## BRITANNIA PARK CONVENER

As Mrs D. G. Sargood, our Convener, will be away overseas throughout 1978, Mrs R. E. Gray has kindly undertaken to look after Britannia Park for us. Mrs Gray has been closely associated with the property for many years and we know it will be in good hands. Her address is 56 Balwyn Road, Balwyn, 3103. Telephone 836 9207.

## AUSTRALIAN TREFOIL GUILD ADVISER

Members of Trefoil Guild will be interested to hear that Mrs Isobel Lister, who finished her term of office as State Trefoil Guild Adviser last year, has been appointed Australian Trefoil Guild Adviser. We congratulate Isobel on this appointment.

## GUIDE SECTION — QUEEN'S GUIDE CEREMONY

The next presentation will take place on Saturday, 13th May, so please pass on this information to all Queen's Guides who will be receiving their certificates at this ceremony. Further information regarding the rehearsal and ceremony will be sent to the girls concerned by the end of March.

**S.O.S.** We are anxious to hear of any girls who gained their Queen's Guide badges during August and September, 1977, as the Advisers' Office was unmanned for a short period during this time and accordingly our records may not be in order. Please send details to Mrs Thompson, Secretary to Advisers, C/o Headquarters, as soon as possible as we need this information to send out invitations. There could be a Queen's Guide application form (blue) which was sent back to either the Commissioner or Guider in error. Please check.

## ENDORSEMENT OF GUIDER WARRANTS

As the result of an All-Australian decision, Guider warrants will now be reviewed for endorsement every two years instead of every five as formerly. Before being eligible to have her warrant endorsed, a Guider will be expected to have taken part in a Training Course or Conference during the last two years to keep herself up-to-date. Details of this warrant endorsement will be discussed at the forthcoming Commissioners' Conference — watch Matilda' for further details.

## BETTY MACARTNEY MEMORIAL CHAPEL

The Chapel built at Camp Iluka, Shoreham, in memory of Betty Macartney who was State Secretary from 1953-1973 and also served the Movement in many other capacities, will be opened at a Ceremony to be held at 2.30 p.m. on Sunday, 19th March. Everyone welcome.

## INTERNATIONAL — AN INVITATION

Taiwan — 2nd National Jamboree

Dates — 5th to 17th October, 1978.

Participants — two leaders and six girls.

Closing date — Victorian Headquarters, 30th March.

For further information, please contact International Adviser.

## APPLICATIONS FOR GRANTS FROM STATE YOUTH FUND

Districts wishing to apply for a grant to help with all building (new hall, repairs, maintenance), general running expenses or other projects are advised that applications may be made to the Department of Youth, Sport and Recreation, through its local Regional Officers. The closing date for general grants is usually mid-April but requests for building subsidies can be submitted at any time. All applications must be made on the official application forms which are obtainable at the Department, 570 Bourke Street, Melbourne, or any of its local offices.

## ANNUAL REPORT FORMS AND APRIL ACTION MATERIAL

Annual Report Forms and April Action material will be ready for collection at the end of February and we would be glad if Commissioners would arrange for these parcels to be picked up at an early date. If any country Commissioners cannot arrange to have their material collected personally, please advise.

## COMMISSIONERS' CONFERENCE, 1978

It is suggested that Commissioners attending the Conference at Monash University later this month should enlist the help of their Local Associations in regard to their costs. Most L.A.'s are happy to contribute towards the expenses of attending this Conference if asked to do so. Please turn to them now if you haven't already done so.

# Thinking Day

Australia is one of many countries which belongs to the World Association of Girl Guides and Girl Scouts. In the 50 years since this Association was formed membership has grown from 9 thousand members in 28 countries to over 7 million girls and women in 94 countries.

On 22nd February, many of us will be thinking of those we have met overseas at various camps and conferences. We will remember the warm friendship, and the interesting times which were spent exchanging ideas. We will remember with pride the many projects in which Guiding is involved to help those who are not as fortunate as ourselves.

What will your Unit be doing for Thinking Day?

Mrs Lane, our Public Relations Adviser, recently experienced, first hand, the feeling of belonging to the world-wide sisterhood of Guiding, and the following is part of a speech she gave at the December meeting of State Council.

"Love is a very intangible thing, something you cannot really put your hands on. When you look at a mother with a new baby, or a husband and wife, or a grandmother or grandfather with a grandchild, or a brother and sister, that is family life. When the family extends its life, that is love in action. That is exactly what the Baden-Powell family has done for the world. They have extended their family so that you and I can be part of it.

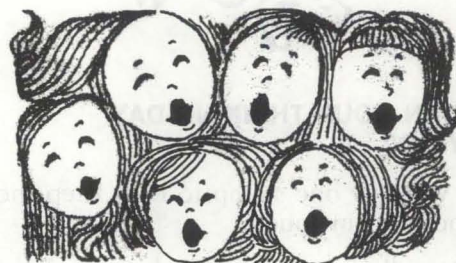
I have been with Americans, Hungarians, Danes, Germans, and many others. I have stayed with a French girl married to an Englishman with a Spanish family; I have attended a Lutheran church in Switzerland where high German was preached and we understood not a word but we enjoyed it. We sang the hymns in German, and we said the Lord's Prayer in our respective languages and we all came away exhilarated, knowing that the family of Guiding was living together at Our Chalet, caring nothing for race, colour or creed."

Whilst in London Mrs Lane attended the Memorial Service for Lady Baden-Powell, and she continued her talk by saying—

"This family of ours shares everything, our songs, our sadness and our joys. It was an exciting time to come out at Westminster Station and look across

to the Abbey and see our World Flag flying at the masthead. It just gave me that lovely warm feeling though I was a quarter of a mile away. I had not reached the top of the escalator before someone tapped me on the shoulder and said, 'You are going to the same place as I am, no doubt'. I walked over with one French and two English Guides. Those of you who have read the article in Matilda will know how much it affected me. Never again will I hear the peal of bells without thinking of the beautiful sound that came from that building. We had gone there with anticipation and we were not disappointed."

Whatever you and your Unit decide to do for Thinking Day, we hope that you will all have opportunity to learn about Guiding in other lands. Remember what you learn, and try to share your knowledge with your non-Guiding friends.

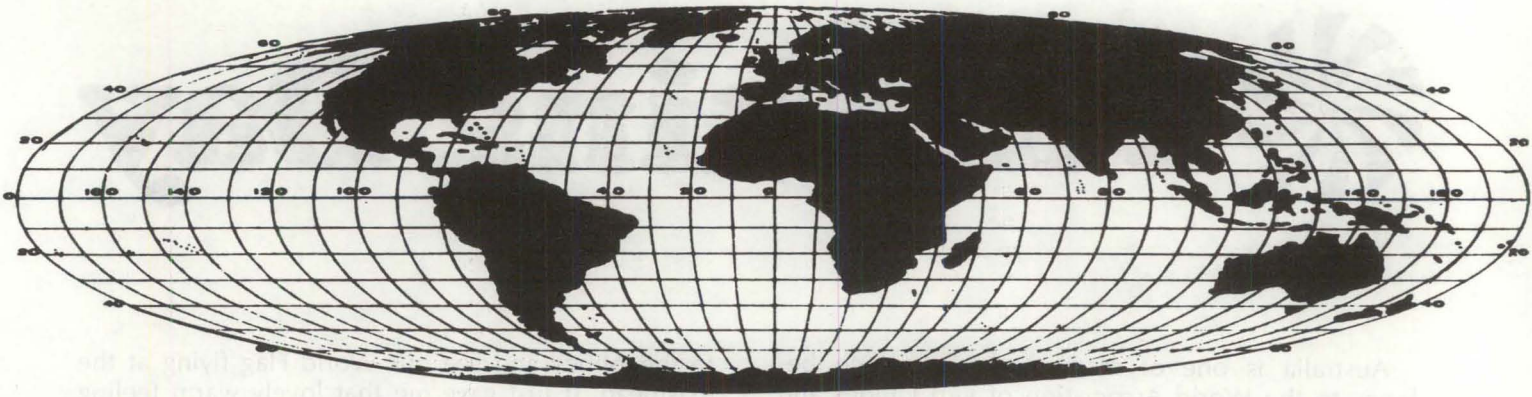


## THINKING DAY SONG

During its April 1976 meeting the World Committee discussed new ways to promote Thinking Day, particularly among younger Guides and Brownies, and one of the ideas was a WAGGGS Thinking Day Song. After some thought Mrs Susan Stevens, well-known for her previous Brownie and Guide songs, was asked if she would like to write a song which could easily be sung all over the world. She readily agreed, and we are delighted to publish the result.

You will find that the tune is a very catchy and memorable one. It can be sung simply by a small group of girls, or performed with equal success by a large group, using more complicated orchestration.

(Copies are available at the Guide Shop.)



### THINKING DAY FUND

In 1978, the World Association will be celebrating its Golden Jubilee, and we hope that all of you will work just that little bit harder to raise those extra cents so that Guiding may continue to grow, and thus enable more young people to have the opportunity to join in this wonderful game called Guiding.



### WHAT CAN YOUR THINKING-DAY MONEY DO?

- 9 cents will buy one stamp to help keep the World Association in touch.
- 17 cents will buy one simple handbook for a girl in a new Association.
- \$1.67 will buy petrol for one day's travel on a motor scooter taking a trainer to a place where a new Brownie Pack or Guide Company is being set up.
- \$8.00 will buy materials for an adult literacy class conducted by Guides.
- \$83.00 will translate a short handbook into a language a Brownie or Guide can read.
- \$167.00 will cover a part of travel and living expenses for a Trainer's attendance at the Trainer's Conference at Our Cabana, which helps develop programs and train leaders.
- \$502.00 will pay for one day's translation services in the three official languages at a World Conference—an essential service when people from 94 countries get together.

### EVERY DAY IS THINKING DAY

During the past twelve months many of our girls have experienced first-hand the feeling of International Friendship, and reports from some of these camps appear in this issue.

There are many opportunities available for your Unit to enjoy International Friendship.

Some ideas which you might like to try include:

- Hold an International Dinner. You might like to try a Chinese night and see who the expert is with chopsticks.
- You could encourage your girls to show their goodwill in a practical way, by helping with Freedom From Hunger appeals, and as a District you might think about adopting a child through World Vision.
- Is there a family in your area which has recently arrived from overseas. Why not invite them to your next meeting. See what you can learn about their country.
- Units can plan imaginary visits around the world as the Canadian Brownies did. As they earned their pennies they glued them onto a large map and "flew" from country to country learning a bit about each as they travelled.

Baden-Powell said: "Will you do your best to make friends with others and peace in the world?" The badge we wear is a passport to World Friendship.



**VICTORIAN REPRESENTATIVES AT INTERNATIONAL WORKSHOP**

(Photograph — W. Swift)

# INTERNATIONAL FRIENDSHIP

## FOXLEASE

"At the moment, I am thoroughly enjoying a "Do-It-Yourself" weekend at Foxlease. I am staying at Beaverbrook Lodge in the grounds. It is a handcraft, outdoor type weekend run by two Guiders, one of whom is an assistant trainer who worked at Our Chalet for three months. I have been horse riding through the forest (and through a gate that the horse forgot two of us had to go through — needless to say he was not the one with the scraped knee!). Just made a "corn dolly" from crepe paper. Camp fire last night, Guides' Own this morning, and then I was able to see over the house — in my uniform — I was really proud to wear it as it was the only international one for the weekend. A fabulous time, thanks to Mrs Joan Kemp, Commonwealth and International Adviser for the County of Greater London, Kent."

(From a letter from Marilyn Spratling, West Heidelberg Guider, on a working holiday in Europe.)

## CAMP AHEBOU

Twenty Ranger Guides and Guides (six from Victoria) attended an International Guide Camp at Port Moresby, to celebrate fifty years of Guiding in Papua New Guinea.

Prior to the camp, we were offered hospitality in Queensland. Some of us in Toowoomba, another in Brisbane, and another in Maroochydore. We all had a fantastic time with the families and the Units in the areas where we stayed.

Japanese, English, New Zealand and Australian contingents met at the executive building, Brisbane, where we were introduced to the Premier of Queensland, were shown over Parliament House and had morning tea with the Speaker.

Then we went to Guide Headquarters for lunch where we met and became friends with the girls from our contingent and those from overseas.

We all flew to Port Moresby where we were given a tremendous welcome by the Army Pipe Band, and Guides, Guiders and Senior Guides presented us with leis.

For the next eight days we were billeted in Wau, Lae or Goroka and then we all returned to Port Moresby for "Camp Ahebou" held at the Show Grounds. There were 160 Guides from seven countries attending.

During the camp we visited Gaire Village for a Mu-mu (traditional feast).

On Sunday we had Guides Own at the Scout Camp, and then went on to the Sageri High School Art Exhibition and Museum, the Sirimunu Dam, the Kokoda Trail Memorial and the Bomana War Cemetery. That evening each country presented a cultural item.

Other days were spent doing art, playing sport, watching films, visiting Independence Hill, a Museum and Art Gallery, Guide Headquarters and shops and the Koki market.

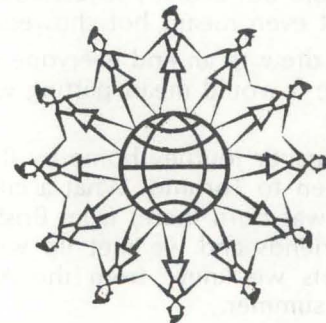
After the Closing Ceremony everyone left for the airport shedding tears and promising to write soon.

With the rest of the girls who attended this camp I recommend future international camps or functions to all Guides and Rangers. We all had a tremendous time, learning a great deal about ourselves and the other Guiding countries represented.

Not all our time was spent sightseeing; much was left for normal camp activities, *meeting girls and sharing anecdotes about our Guiding lives at home.*

The end of the camp and arriving home is not the end of it all. There is a lot more to come. Since returning we have all shared our experiences with others — Guides and personal friends. We hope you will apply for the next international function.

LYNNE FREY



## CANADIAN CAMP

We three Victorians have recently returned from an absolutely marvellous trip to Canada. It was a trip of a life time and it began one Saturday when we flew from Tullamarine Airport to meet five other girls and our leader in Sydney.

On the Sunday we all went to church before going to Australian Headquarters for lunch. It was really like a small party. That afternoon we left Sydney. Everyone was very excited.

Our first stop was Hawaii and the next touch-down was San Francisco. Then it did not take us long to get to Vancouver. We were met by some former Australian, now Canadian, Guiders and their daughters who showed us the sights of Vancouver.

Next morning we went shopping. Some even found the Guide Shop. That afternoon we took a "hairy" taxi ride to the airport to catch our flight to Calgary.

In Calgary we were divided into pairs and billeted with families. While there we took in the Calgary Stampede, which is too fantastic to describe, Heritage Park, a little like Sovereign Hill, and went to the Canadian Rockies which were the highlight of our stay in Calgary. They are superb and indescribable. To stand in them makes you feel like nothing, they are so big. We were also made honorary Calgarians and presented with stampede hats at a barbecue the night before we left.

Then we went to camp. The camp was divided into nine sub-camps. Each sub-camp was split into five unit camps and each unit camp was divided into patrols. International guests were distributed among the unit camps although we still remained in our pairs.

There were many different activities. They included swimming, canoeing, sailing, cycling, skiing, skating, (on synthetic snow and ice), arts and crafts, sports and fitness, back-packing (hiking), radio, orienteering, drama, dancing and singing.

Of course things did not go perfectly. How many people can say that they have been in camp with a hurricane? We can. The tailend of one anyway. Everyone was running around tightening ropes or letting down their tents to stop them from tearing. Not long after that we had a rainstorm which forced half the camp to be evacuated. This might sound terrible but actually it just added to the fun. For some it even meant hot showers.

As camp drew to an end everyone was becoming sad because it would mean parting with many new friends.

We began our journey home by flying to Montreal and then to Toronto. What a city! In Toronto, Jane (who was born there) from Brisbane, was met by some friends and we met up with some Canadian Scouts we knew from the Australian Jamboree last summer.

Next morning we left early for Chicago and then San Francisco. Never go to San Francisco when the cable cars are not working. Those hills are terrible. We went to China Town and the Waterfront. We also saw the Golden Gate Bridge.

At night we caught our plane home and stopped briefly in Hawaii and Fiji before arriving in Sydney and, finally, Melbourne.

Some time in the future we hope to go back to Canada.

If you ever have the opportunity to apply for an overseas trip, do so. It is an incredible experience.

LISA LOUGHNAN,  
LISA MATTINGLEY  
and ANN MAREE CONNELL.



## TO DACCA TO VISIT A LADY

The trip from Cher Fasson (an orphanage run by "Those who have less" where Helen Malcolm, a Victorian Ranger, is working in Bangladesh) began by catching a bus at 6.30 a.m. one day.

After many unsuccessful attempts, Helen had finally made contact with the Guide Association in Bangladesh and had been invited to Dacca to meet another Australian with an interest in Guiding — Lady Joyce Price, chairman of the World Association of Girl Guides and Girl Scouts.

"We rattled, chugged and steamed our way to Bhola, 50 miles away, taking 5 hours, a bit over the average. I immediately boarded the launch in an attempt to find a reasonable bit of deck space. The launch was one of the oldest I have seen, even in Bangladesh and was filthy and crowded. We were supposed to leave at 2.00 p.m. but it was 3.45 p.m. before we got away roped side by side to another launch. I am not sure which was pulling which but it was very, very slow. We did not arrive in Dacca till 11.45 a.m. the next day — 20 hours' travelling time! I hurried through orphanage business I had to do as I intended to return that night if possible. It did not help to be taken to the airport instead of the bank by a young taxi driver who assured me he knew where I wanted to go! Finally I rang the Girl Guides and found that Lady Price had in fact arrived and her first appointment was with the University Rangers at 5.00 p.m. That fitted in well as I could repair to our house at Mohammedpur, have a shower and get into uniform — stockings and high heeled shoes included, the first time in 6 months!

I arrived about 15 minutes late as the rickshaw driver was not sure where the university was. After we had been entertained by singing, dancing and reciting (a shortened program as some near relatives of Guiders had been killed in the recent attempted coup) we had 'high tea' and I was introduced to Lady Price (I had met her when she was Victorian State Commissioner and I was selected to go to India in 1967) lots of officials and the Rangers who went into gales of laughter over my Bengali. Then I was invited to tea at the International Commissioner's house where Lady Price was staying and to all the functions on the following day before Lady Price went on to Chittagong. I was having such a great time and so happy to be back in uniform again that I decided to accept and was very

(continued on page 190)



---

## NEW ZEALAND HOLIDAY FOR LONES

---

We have made it! We passed Australian Selection and are now going to represent our country at an International Gathering. We are going to Aotearoa — Land of the Long White Cloud to help the Kiwi Lones celebrate 50 years of Guiding. Months of anxiety, preparation and all those little things to be done, what happens. We are stranded in Sydney for eight days because of the Air Traffic Controllers' strike.

Following our disappointment in May, I think there was not one of us who felt certain we were really going to New Zealand until we actually arrived at Christchurch Airport, but from then on I can assure you there was no uncertainty and no disappointment. New Zealand is renowned for its beautiful scenery and our tour arranged by National Headquarters showed us wonderful examples of this. The friendliness of the people we met, the hospitality of our host families and the plans made by the Provinces for our enjoyment all added up to a most memorable two week holiday.

The invitation extended to all 18 members of the contingent of Lones which was to have attended the 50th Jubilee of Lone Guiding in New Zealand was accepted by eight of us.

We flew first to Christchurch which nestles at the base of the hills of the Bank Peninsula.

After meeting my hostess and family, we drove around Christchurch visiting the Cathedral, Gardens, Bridge of Remembrance, Museum, Cob Cottage and other places of interest. We then ventured a little further afield to Lyttleton — which is the port of Christchurch, walked the Bridle Path, and then visited Kaipori, Rangiora and Akorua before returning home.

On Monday we went swimming at the Queen Eliabeth II Park which was built for the 10th British Commonwealth Games. In the afternoon we visited New Zealand's Girl Guide National Headquarters.

Next day a hike was organised. However I had been asked to help out at the Community Centre where Rangers and members of other youth organisations do "Service" in return for which they are able to use the building for their meetings. In the late afternoon we went to the Industrial Fair.

On Wednesday we went by car to Waikari about 60 miles from Christchurch where many of the Lones from Canterbury Province met us for a day

together. Even though it was a wet day we had lots of fun and a good time getting to know everyone.

Thursday morning we were all very sorry to say goodbye to our hostesses and friends when we caught the railcar for the West Coast. This train travelled over the plains then up into the mountains and we crossed a number of gorges on our way. We just gasped at the depth and beauty of them and the locals soon became used to the clicking of cameras. At Arthur's Pass, the summit of the mountains in this area, the train went through a tunnel five miles long, and about an hour after this we all alighted at a small station called Rotomanu where we were driven about 20 miles to the home of our hostess. This was a delightful place called Haupiri set in a lovely valley in the mountains and being New Zealand, of course, they had sheep! Did you know they have 60 million sheep there and a population of only 3 million? It was lambing time too, which created an extra interest for us.

That night was one we will always remember as it held something special for one of our contingent members. We all wore uniforms as our hostess' daughter and the next door neighbour's daughter were both making their Promise as Lone Guides and then an Aussie was invested as a Ranger. This night, too, was the only night we all spent together under the one roof — we had the old homestead which has been kept for such occasions!

Next morning we were driven to Greymouth on the West Coast. We went on to Shantytown which is a replica of a gold-mining town in the earlier days of New Zealand settlement. We thoroughly enjoyed our time there and were taken on by two further 'drivers' to Hokitika. As we were driving, we had a wonderful view of Mt. Cook, which is the highest mountain in New Zealand. At Hokitika we inspected Glass Blowing and Greenstone factories. After afternoon tea with local Guiding people, we returned to Greymouth by bus where we saw the sun setting on the sea, and we knew that somewhere over there was Australia.

We were greeted by Greymouth Rangers who had prepared dinner for us. Early next morning we took the bus to Nelson. This is a regular service and is also the paper run. The route took us along the coast and as Westland turned on beautiful sunny weather for us, the trip was most enjoyable. Apart from one other person, we were the only

passengers on the bus and when the driver found out we were Aussies he pointed out all the places of interest to us. We stopped at Punakaiki to see the Pancake Rocks and the Blowhole which was blowing quite well for our benefit! On up the coast to Westport where we had a ten minute break and were greeted by the Ranger Guider and some of her Rangers — have you ever realized how our Guide uniform can bring an instant bond of friendship? From Westport the road goes inland to the mountains, a truly scenic drive through the lovely Buller Gorge. Passing through Inagahua we saw the devastation of the 1968 earthquake and Hawks Craig where the road is carved out of an overhanging bluff rock. Arriving at Murchison we were again greeted by 'uniforms' and given a delicious luncheon prepared by the Lone Brownie Guider and her Brownie 'Mums'. I was staying in Murchison and after saying goodbye to the others, I helped the Guides and Rangers in their service project. I was taken for a tour of the local sights, the most impressive being the Murchison Falls formed by an earthquake in 1928.

On Monday we went firstly to Mariri for morning tea, then Motueka to inspect the local fish works — very interesting but none of us want to work there. A lovely hot lunch in the Scout Guide Den prepared by the Local Association, then a visit to nearby Tobacco Research Station. Tuesday saw us touring Nelson and in the evening we gathered with local Guiding folk.

Wednesday we took the bus to Picton where we boarded the inter-island ferry which travels up Marlborough Sound, out to Cook Strait and over to Wellington. On Thursday most of us went into the city — I went shopping and for a ride on the famous cable car — without which no visit to Wellington is complete. Then, by bus we visited the Parliament Buildings, Old St. Paul's Church, Mount Victoria, Lampton Quay and Zoo.

On Friday we travelled by car to the home of the National Adviser for Lones at Hunterville about 120 miles north of Wellington. On the way we visited a pottery, an historic Maori Church at Otaki, had lunch at 'Big Tex' (like Macdonalds) and arrived at Marton in the afternoon. This is where the Guide Association has its National Training Centre called "Arahina". Each Province looks after a certain room and in the 'Lones' room we were thrilled to see the gift we had sent to them in May. We had afternoon tea with trainers who were there for a conference. A very warm welcome awaited us at "Drysdale" and we had a lovely evening together singing songs around the log fire. We managed to tour part of the property in the morning during the fine spell and after all the rain saw spectacular waterfalls. Back to Wellington again in the afternoon and that night I

was invited to a Queen's Guide Scout disco. It was a wonderful night.

Next morning we realised it was time to say "Haera Ra Aotearoa". We flew over Nelson, the Southern Alps, and the Tasman Sea to Sydney, and then on to Melbourne where we met parents and friends.

It was a wonderful holiday and we are all grateful to the Guide Association in New Zealand for arranging it for us and to all their members who contributed in many different ways to give us so much pleasure, thus more than compensating our disappointment in May.

RUTH TOPE  
3rd Victorian Lone Rangers

---

### TO DACCA TO VISIT A LADY

(continued from page 188)

glad I did. It was a great opportunity to meet so many Guiding folk, especially Rangers, all at once. That night after a beautiful meal we were all driven home before the new curfew time of 10.00 p.m.

Before attending Yellowbird (Brownies) revels the next morning I went to the airport and updated my cholera and smallpox injections. After the youngsters had displayed their talents in many directions we again went to the International Commissioner's house for a beautiful lunch. In the afternoon we had a tremendous time visiting a day camp, with real tents, at a Women's College. It was more like our Guide camps than a Ranger one. There were gadgets, large bell tents and heavyweight equipment but it was like a breath of fresh air to me, and the girls were obviously enjoying it. Afterwards we had a most impressive campfire and then I had to rush off to catch my launch. I left Lady Price signing autographs. We had exchanged lots of gossip about Australia.

The return trip only took 15 hours including over 2 hours aground in the middle of the night! A picturesque trip with early morning mist and river boats enhancing the sunrise but not made comfortable by sleeping on the deck with my head and arm throbbing from the cholera injection. It was good to be back, away from the ceaseless stares and the same questions over and over again from fellow travellers, but the trip was well worth the discomfort.

HELEN MALCOLM.

## Encore' 78

Many of you will remember the happy times during 1975 when soloists and groups of Brownies, Guides and Rangers competed for the privilege of appearing in the National Festival of Song at Dallas Brooks Hall.

This happiness spread right around Australia as all States prepared groups of girls to come to Melbourne. It was so successful that, as we have mentioned in recent issues of "Matilda", it will be repeated in 1978. But this year, there will be some changes.

- The name of the event has been changed to "ENCORE '78", indicating that all States want a repeat of what happened in Victoria in 1975. The new name will more accurately describe the event since we wish to include many facets of the Arts.
- The National Final will be held in Brisbane, and successful girls from Victoria will travel by train, leaving Melbourne on 26th August and returning on 5th September. Girls will be billeted, and Queensland is arranging outings for four days before the actual performances on 2nd and 3rd September.

We urge you all to start your planning NOW! You will have so much fun deciding on what item to prepare, what sort of costumes you will wear, etc. We would like to think that all members in a Unit could be involved — if not actually on the stage, then by helping with properties, costumes, etc.

Heats and semi-finals for this competition will be held in May and June, in selected country and suburban centres to minimise travelling. State Finals will be held on 22nd July at Malvern Town Hall.

### Categories

For each of the sections, Brownies, Guides, Ranger Guides and Rangers the categories will be—

- Solo (or small group up to 4) in dance, drama, instrumental, singing or combinations.
- Unit item.

There will also be combined sections item — more details later.

Any enquiries concerning Encore '78 should be sent to the Convener, Mrs M. Draper, 35 Albury Road, North Balwyn, Victoria 3104.

**WATCH FOR APPLICATION FORM IN MARCH ISSUE OF MATILDA**

## APRIL ACTION



What is YOUR Unit going to do for "APRIL ACTION" — 1978?

If you have not already decided, NOW is the time to start planning. Perhaps you are arranging a Concert, or an Auction Sale, or a Book Exchange Stall in the main street, or a Mini-Fete — something that the whole Unit can take part in, or maybe you prefer to carry out individual service jobs. You know that you can do both, if you wish.

Reports came in of the many exciting things organised last year for "APRIL ACTION" and these brought in good financial returns, although not quite as good as the previous year. Do try to put that extra little burst of effort into your activities this year, to give "APRIL ACTION" — 1978 a bumper result. As well as meeting our day to day administrative costs, we have many projects planned which will benefit all members of the Movement throughout the State, so we need all the help we can get to meet our commitments.

Please be sure that you give value for money when carrying out your activities, whether it be providing goods for sale, entertaining friends, or whatever else.

In the next few weeks you will be receiving similar folders and cards to those of last year — one folder per Unit and one for each Commissioner, and individual job cards for those wishing to use them. These cards will fold in half to fit into uniform pockets. More cards are available at Guide Headquarters if required. Lone Units will receive their literature through the Lone Adviser. Parcels will be ready for collection at Headquarters from 13th February, so you should receive them in your Units some time during March.

Hope you have a happy and successful "APRIL ACTION" time in 1978!



**INTRODUCING "SAC" ON THE BEAT**

I am the little character symbolizing the Supplementary Activities Committee, and will appear as a badge, on the scarf of committee members and helpers at our functions. I owe my creation to a Moorleigh Ranger Guide. Thanks, Deirdre Norwood!

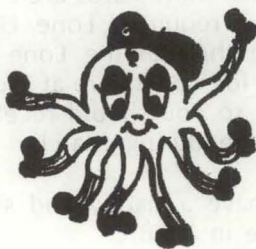
I can symbolize many things!?:)

- Being cross-eyed and bumble-footed, I have no idea where I am going, what I am doing, or indeed, where I am.
- With eight feet, I am bound to put one foot in it, somewhere along the line, sooner or later.
- When I become involved, I am in — with boots and all.
- Like an eggbeater, I am capable of fast progress — only sometimes in my enthusiasm — I get knotted.

Dear Reader,

Please feel free to select the explanation, nearest to your heart's desire. THE OFFICIAL COMMITTEE EXPLANATION IS (which to some may appear rather dull) — we are endeavouring to supplement the 8-point program throughout Guiding as a whole.

Therefore "BE PREPARED", for who knows when you may have cause to say, "SAC" WAS HERE!



**PINOCCHIO CLUB**

A Puppetry Workshop for Guiders, Commissioners, Local Association and Trefoil Guild members who are interested will be run by the Puppet Guild of Victoria.

**Limited Numbers — 12 only**

Dates: Saturday, 18th March, 10.00 a.m. to 4.00 p.m. Sunday, 19th March, 11.00 a.m. to 4.30 p.m.

**Venue:**

Richmond Scout Hall — Lyndhurst Street (off Bridge Road) directly opposite Richmond Town Hall. The hall is at the end of Lyndhurst Street. Fee: \$6.00.

The Workshop will cover:—

1. The art of making various kinds of basic puppet.
2. How to choose suitable plays for puppets.
3. Ideas for writing your own plays.
4. The art and skill required to become a puppeteer.

This is a great opportunity! Do not miss out.

Applications close on 1st March, 1978 and should be sent with stamped, self addressed envelope and fee (cheques payable to — Supplementary Activities Committee) to Mrs. M. McLean, 2 Wyatt Street, Seaford, 3198.

**APPLICATION FORM**

NAME .....

ADDRESS .....

I wish to attend the PINOCCHIO CLUB and enclose \$6.00 fee.

SIGNED .....



# COME, FLY WITH ME

## Kite Flying and New Games Day

It was a day for "doing your own thing" which 210 people enjoyed, even the two young boys passing by, who were down from Sydney, for the Ballroom Dancing Championships. They were good at tug o'war as well!

If you had been there, you would have seen—

A Brownie — beret pulled down to her glasses, socks down, grubby knees, lunch tucked under her arm, busily munching, and at the same time holding a string, and gazing blissfully upwards at her kite in the air. "Hey! I see you finally got it to stay up there." — "Yep! Isn't it beaut!" Big grin!

A Guide — shirt hanging out over her skirt, beret on crooked, one sock up, the other down, gazing up rapturously at the kite on the end of her string. "Is it the first time you've flown a kite?" — "Yeah!" — "Did you make it today?" — "Yeah." "Are you enjoying yourself?" — "IT'S TERRIFIC!"

A Ranger — lying flat on her back, legs crossed, hands clasped behind her head, holding a string — and way above her — a kite lazily flying. Perfect peace!

The final word comes from 1st Bonbeach Brownies:

Kerri Ann (10): It was fun.

Nicola (9): I won a prize!

Carolyn (9): Lovely decorated kites and a good afternoon.

Suzanne (7): Great fun! The parachute game was fun.

Wendy (10): The games were fun.

Helen (8): I was cold but I had my photo in the Sun.

Christine (8): I wasn't going to go, but I went after all, and I had fun!

Everyone enjoyed this FAMILY FUN DAY, especially the two boys aged 15 and 14 who came with their family. They were aghast at the thought of spending a day with Brownies and Guides, yet

had to be dragged home at the end of the day. They had a great time and did not want to leave!

The only disappointment of the day was the failure of the Professional Kite Flyers to arrive to give the demonstration. This was due to circumstances beyond 'SAC's' control, and caused our morning program to be a bit slow. We apologise for this, to all who came!

SAC gratefully thanks the following people — Mrs Pat Maughan, Mrs Judy Borg for their patience, and fantastic work with kitemaking; Miss Gail Price, for running the New Games; St. John Ambulance — whose services were needed; Police Scouters Association — particularly Peter, who minded bags and valuables all day; our volunteer helpers — Jack and Neil Surry; Mark Seymour, Beth Grover, Robin and Kay. To the organizing committee — SAC says a special thanks, and "dips 'is lid".



### KITE FLYING

Mrs Pat Maughan, 82 Fortescue Avenue, Seaford.

Mr Tony Tonkin, 3 Hamilton Place, Mt. Waverley  
Recreation Officer of your local council.

National Fitness Council.

Recommended book — "Kite Flying for Krowds of Kids", obtainable from National Fitness Council.

### NEW GAMES

Department of Youth, Sport and Recreation, 570 Bourke Street, Melbourne. They will be holding courses this year for youth leaders interested in learning how to "play" New Games.

## PARTICIPATION IN PUBLIC APPEALS

In recent years careful thought has been given to the question of whether members of the Movement acting as such should or should not be permitted to take part in major public appeals such as the Children's Hospital Annual Appeal, a cause many of our Brownies and Guides would like to help. It should be noted that P.O. & R. Rule 6, clause 5(a) which pertains to this matter has now been amended as follows:—

Guides in uniform must not take part in collections for their own funds. With the approval of the Guider and Commissioner, Guides in uniform, working in pairs, if accompanied by an adult, may assist in door-knocks or street collections for appeals for outside organisations provided this conforms with State ordinances.

With the approval of the Guider and Commissioner, Ranger Guides in uniform working in pairs may assist with door-knocks, street collections and outside appeals, providing this conforms with State ordinances.

With the approval of the Commissioner, Rangers in uniform working in pairs may assist with door-knocks, street collections and outside appeals, providing this conforms with State ordinances. Brownies do not take part in street collections or door-knocks.



### SPECIAL NIGHT AT BACCHUS MARSH

An evening was held at the Bacchus Marsh Guide House to mark Mrs N. Stirling's retirement as Ballarat Region Commissioner.

Mrs Stirling has been connected with Guiding for nineteen years and has been involved in many aspects of the movement.

Surprise of the evening was the presentation to Mrs Stirling of the Wattle Award. After thanking everyone for attending, Mrs Stirling spoke of her personal reward and satisfaction of being a Guider. She also stressed the necessity to encourage more Guiders because of the number of girls wanting to join the movement.



This Campaign has now ended and we thank all who took part, and congratulate the winners.

In Category 1, Maffra Ranger Guide Unit came first collecting 544 labels, followed by 1st Birchip Guide Company, 1st White Hills Brownie Pack, 1st Upper Fern Tree Gully Brownies, 2nd Bentleigh Blue Wren Patrol, and 1st Epping Guide Unit.

Category 2 was won by Maryborough Local Association with 717 labels, followed by Nagambie District, 1st Loch Brownie Pack, 1st Marysville Guide and Brownie Units, 1st Queenscliff Guide Company and 1st Corio Brownie Guides.

First in Category 3 were Strathmore/Pascoe Vale Districts with 1317 labels, and they were followed by Koonung Heights, Lalor, Werribee, Newcomb and Moorleigh Districts.

Projects chosen by prize winners varied, and included the purchase of camp equipment and unit equipment, repairs to property and equipment, Life Membership of Friends of World Centres, and Braille Books for blind children.

A total of 213 Groups took part and collected 37,079 labels. We hope, as well as doing something to help conservation within our State, they had a lot of fun.

DORIS C. SPATLING  
"Be A Sport" Campaign Liaison

### LEISURE TIME ACTIVITIES

Indoor and outdoor leisure time activities for Brownies and Guides

Laburnum Guide Hall

Garie Street, Laburnum

16th, 17th and 18th May, 1978

Cost: \$2.50 daily; \$7.00 for 3 days.

Numbers *limited*. Participants accepted in order of receipt of fee. No telephone bookings.

Closing date 6th April, 1978.

Application forms available from Mrs M. Pritchard, 16 Comer Street, East Brighton 3187 or Mrs W. Harvey, 33 Laburnum Street, Blackburn 3130.

Please *enclose a stamped addressed envelope* with request for form.

### CAMPING NEWS

The Betty Macartney Memorial Chapel at "Iluka", Shoreham, is to be blessed on Sunday, 19th March, at 2.30 p.m.

All interested members are invited to attend.



# BRITANNIA PARK

As you plan your activities for the year we hope you will include a visit to Britannia Park. There will always be something different to see and do, yet the property retains its air of peace and serenity which is so refreshing.

Before Christmas we were busy painting seats and rails of Guide House, planting and tending new shrubs, and preparing the property for the main fire danger period. Four extra fire extinguishers have been installed, and routes to fire exits clearly marked. Thanks to Trefoil members, many blankets have been mended and gay new rugs knitted for the beds. Due to the generous family and friends of the camping adviser, work is proceeding on a shower unit at Harrison House.

A plea for *your* help when camping — please would you ask day visitors to your camp to visit campsites only between 2.00 p.m. and 4.00 p.m. to ensure the privacy of campers. Barbecue and other facilities are available in the car park at other times during the day. Remember, too, that if you are using Guide House, Brownie Cottage or any other building, it is your responsibility to leave it SPOT-LESS for the next occupants, just as you would wish to find it for yourself.

During my absence overseas this year, Mrs R. E. Gray will be acting convener of Britannia Park. Those readers who know Pat, will also know that she has been a previous convener for many years, has never ceased to bestow loving care on Britannia Park, and works there every Thursday with an enthusiastic band of helpers. I know you will all give Pat and the committee every support in their ventures for 1978 and I am looking forward to being back with you early in 1979.

The Committee wishes to thank the following who maintained the property recently:—

## MAINTENANCE FUND

### September

- 17: Hazelwood Local Association.
- 21: Yarraville Local Association (memory Mrs Ebeling)
- 24: 7th Malvern Guide Company

### October

- 9: Bendigo Northern Division Revels
- 14: Ringwood North Local Association  
Nilma District Local Association
- 15: Ringwood North Local Association
- 21: Yallourn North District.

### November.

- 1: Upper Ferntree Gully Girl Guides
- 2: Yallourn Local Association
- 3: Puckapunyal Local Association
- 4: Puckapunyal Local Association
- 5: Whorouly South Local Association
- 6: Toolamba Local Association
- 7: Simpson Local Association
- 10: Meeniyah Local Association  
Preston Division
- 15: Miss Bunning
- 19: 4th St. Kilda Guide Company
- 20: 4th St. Kilda Guide Company  
Maidstone Local Association
- 21: Maidstone Local Association
- 24: Geelong Trefoil Guild
- 30: East Malvern Gardiner Local Association

Y. SARGOOD

**ALL ADULT SEMINAR . . . 22ND JULY, 1978 . . .**

**ROBERT BLACKWOOD HALL, MONASH UNIVERSITY**

**WATCH MATILDA FOR DETAILS**

## DATES FOR YOUR DIARY

### February

- 19th: Ranger 'International Sunrise'
- 22nd: Thinking Day
- 24th-26th: Commissioners' Conference

### March

- 4th-5th: Ranger Regatta
- 18th: Region Conference — Gippsland Region
- 19th: Opening of Betty Macartney Memorial Chapel, Shoreham.

### April

- April Action
- 1st: Youth Garden Party
- 3rd: Lady Delacombe Golf Competition
- 4th: Region Conference — Wimmera Region
- 21st: St. George's Day Service
- 22nd: International Workshop

### May

- Annual Census Returns due
- 6th: Pre World Conference/Australian Assembly Discussion Day
- 10th: Region Commissioners' Meeting
- 13th: Queen's Guide Presentation Ceremony
- 20th: State Guide Campfire at 'Jumbunna'

### June

- April Action money due at Headquarters
- Annual Reports and Subscriptions due at Headquarters
- 10th-11th: Trainers' Weekend
- 20th: Open Day for Commissioners
- 24th-25th: Ranger Conference

### July

- 8th: Ranger Guiders' Conference
- 14th: Ranger Debutante Ball
- 22nd: State Final — Encore '78 — Festival of Song

### August

- 9th: Region Commissioners' Meeting

### September

- 26th: Luncheon for Mayoresses and Shire Presidents' Wives

### October

- 7th: Queen's Guide Presentation Ceremony
- 23rd: Annual General Meeting
- Jamboree-on-the-Air
- Patrol Challenge Field Days

### November

- 15th: Region Commissioners' Meeting

Note: Changes or additions to the above will be made known through 'Matilda' as new dates are known — READ 'MATILDA' REGULARLY TO KEEP IN TOUCH.

## GUIDE SERVICE TEAM

### Training Calendar for 1978

#### February—

11th: Operation "Rubber Duck". Communications exercise over water using dinghies, and the correct management of radio equipment therein, co-ordinated by Mr. Peter Maclellan, Service Team member.

#### March:

1st: General meeting, followed by radio communications training.  
29th: Training on Telex and PABX.

#### April—

28th: Switchboard . . . Plug and Cord.

#### May—

31st: Service at Keilor.

#### June—

28th: Guest Speaker: Mrs John Burns of the Royal Alfred Hospital.

#### July—

26th: "Motor Insides Night" . . . co-ordinated by team member, Mr A. Taylor.

The Team is anxious for members of the Movement, and other members of the community at large, to know that we exist primarily for Service even though we are also training for service in an emergency or disaster.

Sometimes we could have helped had we known we were needed. A telephone call to Miss Barr at Headquarters, or at home will alert the Team no matter how small or large the need. There is a standby team rostered for weekends. The team is fully mobile, is self supporting, using Light Weight Camping methods, and now possesses its own radio equipment.

NOTE: Future guest speakers include Mrs Rosemary Weatherly, Region Commissioner Western Plains, who possesses first hand knowledge of the requirements of the team and Mr Diamond of the St John's Ambulance Brigade, who will demonstrate disaster makeup techniques, so that the Team can be as realistically trained as possible.

BETH GROVER







# TRAINING PAGES

## *Come, Come, Light up the Fire*

Somewhere in the Australian bush a small circle of happy faces looked at the carefully laid fire with eager anticipation. The match was struck.

"Hello, Fire," I said, "It's been some time since we last met."

Fire burned brighter and said, "Hello Ash, welcome back!"

Allow me to introduce myself. I am Ash — the ash from past campfires. It is the tradition in some lands, especially the U.S.A., for the participants in a campfire to take away with them a small quantity of the cold ashes from that fire and sprinkle them on to the next campfire they attend. Thus the fellowship, the glowing fellowship of the campfire is perpetuated.

As the ashes are sprinkled into the flames these words are spoken — "We carry our fellowship with us in these ashes from other campfires with other comrades in other places. May the joining of the dead fires with the leaping flames symbolise once more the unbroken chain that binds Guides around the world."

Fire and I are old friends. We remember the happy, rollicking times we have spent together and the quiet, sensitive moments during many, many campfires with the girls and leaders of this great world-wide Movement.

Overhead, myriads of stars are shimmering in the dark velvet bush sky. I find it easy to remember the glowing pleasures of the campfire.

Suddenly our friend Wood chimed in.

"You two must not limit our campfires to the out-of-doors. Remember, there are many occasions when the girls cannot get out-doors and so must have their campfires indoors.

So let us agree that it is the Spirit of the activity that makes a good campfire — enthusiasm, happiness and the joy of being together."

"Well spoken, Wood," said Fire. "It is the Spirit that ignites the campfire."

"I heard a Campfire Opening a little while ago, and it said to the girls what I would have said, had I a voice," said Wood. "It went like this . . .

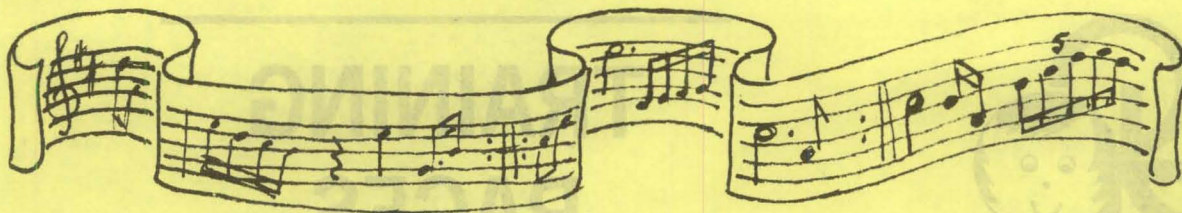
As the flames point upwards  
So be our aims;  
As the red logs glow  
So be our sympathies;  
As the grey ash fades  
So be our errors  
As the campfire warms the circle —  
So may Guiding ideals warm the world."

"There is lively activity in a campfire," said Fire. "I love to be able to burn fiercely and brightly while the girls sing with great zest."

"I remember campfires where I heard new songs — songs from other countries, proving that this really is a world-wide Movement," I said, "and I especially love the time when the red glow dims gently to grey ashes."

"Ssh, they're ready to start," said Wood.





A girl with a lilt in her voice then read a campfire opening—

“Here soon there will be ashes that once were trees.

In Spring they gave us delight;

In Summer, shade;

In Autumn the colours of their falling leaves;

In Winter the beauty of their branches bare.

May our lives, like theirs, be lives of service.”

The Leader, Merri, took over, and the campfire singing began — first with the lovely three-part Sussex Campfire Opening, then progressed with lively songs that the girls sang with great ardour.

“It’s time for a break from singing,” said Merri. “We’ll divide into two parts around the fire and play the question and answer game — ‘The Farmer’s Hen’. The girls entered into the game with enormous enthusiasm — the leader of each team first of all telling her second team-member — ‘The farmer’s hen has laid an egg,’ to be answered, ‘A what?’ ‘An egg!’ replied the leader. Then the second team member turned to the third and told her the same story, and of course had to refer the question back to the leader for the answer, ‘An egg!’, which was then relayed on, and so on, the game went amid giggles and great hilarity from the two teams.

After singing the melodious round — ‘Rosen Fra Fyen’, Merri divided the girls into five parts and announced ‘Danish Bells’, much to Wood’s delight. ‘Ooh,’ said Wood, ‘this really is my very favourite Round.’ The first part started to sing on their single note ‘My heel and my toe, my heel and my toe’, while the second part took up the refrain, ‘My arm, my arm’. The other two parts sang on their respective single notes — ‘My elbow, my elbow’, and ‘My finger, my finger’. At last the fifth part joined in with the beautiful, lilting refrain that bound together all the parts into true bell-like tones.

“Let us now divide into four parts and do the Merry Go Round,” said Merri.

“This represents the old steam Merry Go Round,” she told the girls, “which, after the engine started, gradually built up speed and noise until the tinny melody was heard above the thud, steam and squeaks of the engine. Music over, the machine slowed down, and the noise died away until it stopped completely.

“We will begin slowly with Part One, and gradually increase speed.”

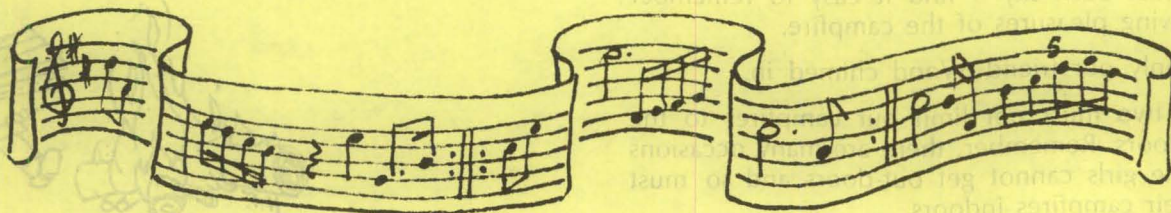
Part One began — ‘Oom-pah-pah, Oom-pah-pah’. (“That’s the engine warming up,” remarked Fire), and then Part Two joined in — ‘Oom-ssss-ssss, Oom-ssss-ssss’ (“That’s the steam building up,” said Wood.) Part Three then joined in with a very high squeak — ‘Oom-tiddle-dee-dee, Oom-tiddle-dee-dee’.

As full sped was reached, Part Four sang in a suitable tinny ‘da-da-da’ sound, the tune of ‘The More We Are Together’. By holding their nose as they sang, the girls were able to simulate the tinny sound of the old Merry Go Round organ. When the music finished, the Merry Go Round slowed down, gradually losing its squeak, then the steam until the engine finally stopped, altogether.

More songs followed, then it was time for the girls’ favourite stunt — the Lion Hunt. As Merri told the story, the girls imitated the actions.

“This is the story of the Lion Hunt of a Zulu tribe in deepest, darkest Africa,” said Merri. She described the village as being circular with a wall of thorns and pointed stakes, one small squeaky gate, set in a hollow in the jangle.

“On the day of the hunt, the warriors lined up in the centre of the village with the Chief at the head of the line. Each warrior carried a spear and a shield.





"I think we may just have time to do the Train Yell," said Merri. This is a menu written backwards. We take it a line at a time, starting slowly and gradually speeding up — the same effect as a steam train pulling out of a station and whistling."

The girls gleefully chanted —  
 "Coffee, coffee, coffee, coffee,  
 Cheese and biscuits, cheese and biscuits,  
 Prunes and custard, prunes and custard,  
 Prunes and custard, prunes and custard,  
 Fish and chips, fish and chips, fish  
 and chips, fish and chips,  
 Soup!!!"

Merri introduced some quietening songs, by which time Fire yawned drowsily and said, "I'm feeling very tired — it's time I let you take over now, Ash." The Night Wind was kind and did not blow too chill, but even so, the girls gathered their camp blankets around themselves.

The blankets were gay with colourful badges, each of which held a happy memory for its owner.

"I had thought of telling you a dreamy Aboriginal Legend now," said Merri, "but instead, I'm going to read you a little poem called 'If No Bird Sang But The Best', because this conveys the message that everyone has a part to play — in a campfire — and in life itself.

"My talents may not be so rare,  
 And better ones found anywhere;  
 But bird songs would not have much zest  
 "If no birds sang except the best.

It is natural for the birds to sing  
 Their voices on the air they fling,  
 So why should I not with the rest  
 Use talents though not of the best?"

So we might learn from birds on wing,  
 That all who wish may chirp and sing.  
 For there would be no real song feast  
 If no birds sang except the best."

The glowing embers signified to the girls that the campfire was drawing to a close. I was glad the girls chose to sing "Taps" as a closing. It reminded me of . . .



## DISCUSSION TOPIC



### HOW long?

Since your District/Division held a campfire?

### How about —

Spreading the idea, and finding a Campfire Leader?

### All join in —

Each Unit choose and lead a song, a skit or game.

### All in good voice?

Yes, if copy of program sent out beforehand and some of the songs learnt.

### And, can you make it —

A real fire, burning bright?

### Resources

Songbooks  
 Campfire Song Records  
 For hints on how to build a good campfire see "Let's go camping".  
 All are available from the Guide Shop.

### STOP PRESS

Will *Trainers* please note that the *Trainers Weekend* will now be held on 10th-11th June NOT 3rd-4th June as previously advised.

### CONGRATULATIONS

Our heartiest congratulations to Mrs Vicki Trembath on being awarded her Ranger Training Certificate and to Mrs Bette McKeown (Guide) and Mrs Moira Gould (Commissioner) on being appointed Team Members.

## LOCAL



## ASSOCIATION SECTION

### Thought for the Month

Don't knock anything you have not yet tried . . . give it a go!

### Questionnaire Result

Response to the questionnaire sent out with Conference application forms was most gratifying, and showed the interest taken by Local Association members in supporting Guiding in their Districts.

Even though Local Associations find it difficult to get far away from the fund-raising aspect, the role they see as being most important, is in giving good moral and practical support to District Commissioners and Guiders in their Districts. As one of the basic aims in Guiding is to support and help each other I am very happy to see this aspect foremost in the minds of so many Local Association members.

It is also gratifying to see funds raised in Districts are put to very good use — uniforms, insurances, training fees, hall rentals, allowances for Guiders and District, Division and Region Commissioners. This again shows the support being given to them.

Valuable practical support in providing badge testers and transport for outings and camps is much appreciated by our busy Guiders, as also are babysitters, and often a casserole to welcome a tired Guider home from camp.

While I feel that preferences already mentioned — namely the moral, practical and financial support to Commissioners and Guiders — had to be among top priorities for the majority of Local Associations, I was pleased to see public relations considered an important part of their role. It is vital that we each try to keep the Movement in the public eye and to be continually involving people from outside Guiding in our activities.

Local Associations are an essential part of the Guide Movement. It is virtually impossible for a District to function efficiently without support of Local Association members. My sincere thanks for the time and thought taken by all who returned the questionnaire. Your opinions reflect the valuable contribution you are all making in your communities.

MARGARET PENNINGTON  
Local Association Adviser

### Conference Questions

Following are questions which time did not permit being answered at the Conference, but which have now been answered on paper by the appropriate Advisers.

Q. For whom is "Matilda" intended?

A. "Matilda" is primarily a magazine for adults. However it is hoped that much of the information and ideas she contains will be 'translated' and taken on by her readers to the younger members of the Movement.

Q. It seems a waste of talent that when a qualified Guider who has a camping permit, leaves the active service of the Guide Movement, she is not permitted to offer services to Guide and Brownie groups whose leaders do not have camping permits. What are the reasons for not allowing this?

A. P.O. and R. states very clearly that — "The holder of the Guider's Camp Permit is entitled to take Guides of her OWN Company camping . . ." This means, of course, the Company with which you work and for which you hold a Warrant. However, if the former Guider was interested to offer her services, I am sure she would be welcomed to help as a staff member.

Q. Are there any handicapped girls in active units?

A. Yes, we have a number of girls in active units, mainly physically handicapped, and girls from special schools. Our aim is to integrate as many as possible. This, of course, depends on the handicap, the leader and the girls in the Unit. We feel this is a good thing for both the handicapped girl and the active girls.

Q. Can we ask parents to pay girls' subscriptions as in the Scout Movement? This way we feel parents who do not help in fund-raising could help companies, etc. and indirectly Local Associations. Company funds would go further and may not need assistance with hall rentals, etc.

A. We expect the parents do pay the girls' subscriptions, both their annual subscriptions to Headquarters and the amount needed for Unit funds. Hopefully, the girls may earn some of this themselves to save all the burden falling on the parents, but all girls in the Unit should contribute towards Unit funds to meet expenses.

- Q. Is accident insurance still necessary for all girls and Guiders in the Movement, now that medical insurance is compulsory?
- A. It may not be essential but the Association recommends it as it provides additional security. If a child is only covered for the limit of Medibank, the Accident Insurance will make up the difference between the actual cost of treatment and the Medibank refund, provided the total amount does not exceed the maximum compensation for the premium paid.
- Q. What is Trefoil?
- A. The Trefoil Guild is that part of the Guide Movement which links together all former enrolled members, who, on ceasing to be actively connected with Guiding, wish to remain in the Movement. Members accept the following responsibilities:
- (a) To keep alive the spirit of the Guide Promise and Law.
- (b) To carry that spirit into the community in which they live and work.
- (c) To give support to Guiding.
- The Local Association brings the general public into touch with Guiding, while the Trefoil Guild takes Guiding into the community.
- Who is eligible to join? All enrolled members, including enrolled Local Association members; a woman who has been enrolled as a member of the Scout Association. Uniformed members of the Movement are eligible to join as Associate Members.
- Q. Could the Uniform Committee give us information regarding their thinking on uniforms for the future?
- A. No major changes are planned in the near future. We avoid any unnecessary changes, but all suggestions are discussed and followed up, if practical. We are always looking for improvements in materials, styles, etc. Any major changes have to be agreed to by all States.
- Q. Brownie summer uniforms do not comply with weather in northern Victoria; Guide uniform is very cold in winter.
- A. This was recently discussed with Sunraysia Region. It was suggested that girls can wear summer camp uniform of shorts and T-shirt, if whole Unit decides. In winter, a jumper can be worn under uniform, or winter camp uniform, again if Unit decides. Dress uniform must be worn for formal or official occasions.
- Q. High cost of uniforms — pricing the low income earners out of sending their children to Guides, the particular children who need it. We feel secondhand uniforms are not the answer because of the quality of material and dye used in them. Why should any child have to use second-best?
- A. We are always trying to keep down costs of uniforms. There is a very small mark-up on uniforms in the Guide Shop. Materials and patterns of all pieces of uniform are available in the Shop and many mothers are taking advantage of this service now. Hopefully, the Local Association would help any family where there is hardship, with discretion of course, and through the District Commissioner. Many girls are wearing good second-hand uniforms, as with school uniform, and there is nothing wrong with this. Many Local Associations organise very successful Uniform Pools. Cost of uniform should never keep a girl from joining Brownies or Guides.
- Q. How are types of uniform decided?
- A. Uniform items are decided on an Australia-wide basis, with each State voting on recommendations submitted by one particular State.
- Q. What percentage of Local Associations has a voluntary contribution scheme?
- A. This is not known, as it is for the District alone to decide if such a scheme would suit its particular area and members best.
- Q. How was the Conference Committee formed?
- A. Local Association members from different areas around Melbourne were selected to make up the Committee, which gave a well-balanced group to work together.
- Q. May Unit Helpers attend Local Association meetings?
- A. Yes, they may attend.
- Q. Without a District Commissioner, to whom do we turn for advice on the formation of a Guide Unit and the correct manner of administration of a Local Association pertaining to it?
- A. The Division Commissioner would be the one to help form a Guide Unit. She would also help the Local Association, or the Local Association Adviser, Mrs Pennington, could be contacted with queries regarding administration.
- Q. How do we get parents to attend the District Annual Meeting, unless Brownies and Guides are encouraged to present an item?
- A. Make it interesting and appealing enough to parents so that they will want to attend. A good speaker can be a drawcard. See that the timing and venue are suitable to the majority.
- Q. Why are the Scout and Guide Associations separate?
- A. The structure and administration of each Association are quite different. However, the two Associations are getting together at various levels to arrange joint activities such as church parades, camps, service projects, etc., and these are being encouraged.

---

---

## FUND RAISING THROUGH BINGO NIGHTS

---

---

Local Associations, Building Committees and other adult support groups which are working to raise funds for Movement projects are permitted to conduct bingo games provided the following conditions are observed:—

1. All legal requirements must be conscientiously fulfilled. These deal with such matters as hours of play, minimum age of players, proportion of ticket money which must be offered in prizes, dates by which returns must be lodged with the Raffles and Permits Board, etc. Details are available from the Raffles and Bingo Permits Board, 1 Little Collins Street, Melbourne.
2. All applications for Bingo Permits must be accompanied by a letter of approval issued by Guide Headquarters. To obtain this letter of approval, groups should send details of their plans including such information as the name of the person in whose name the Permit is to be issued, where and when the game is to be held and the purpose to which proceeds are to be directed.
3. Uniformed members shall not organise Bingo Games and no child under the age of 18 years may take part. (This latter is a legal requirement.)
4. The Commissioner for the District, Division or Region concerned approves the arrangements.
5. Bingo nights being held solely for Guide funds should not be advertised publicly.
6. No alcoholic drinks should be served on Guide premises.

It is foreseen that Districts owning their own halls may receive requests to lease their halls for outside groups wishing to hold Bingo nights. Provided the Local Association or Committee of Management is happy to lease the hall for such a purpose, it may do so subject to the following:—

1. The hall is registered as a Public Hall with the Health Department.
2. If the land on which the hall is situated is under lease, permissive-occupancy or similar arrangement, there is no clause in that lease which would restrict the use of the hall for this purpose.
3. There is adequate insurance cover for the building and contents. It is recommended that groups hiring Guide halls should be required to make their own arrangements for Public Risk Insurance.
4. The Committee is satisfied that the group leasing the hall will fulfil all legal requirements pertaining to the playing of Bingo.
5. No alcoholic beverages will be sold or served.

Similar conditions should be observed in cases where Local Associations or other supporting committees are sharing with other community groups in a program of Bingo nights.

Any queries pertaining to Bingo as a means of fund raising for Guide projects should be referred to the State Secretary.

---

---

### Recipe Corner

#### STRAWBERRY CREAM

1 box ripe strawberries, 1 cup sugar, 1 cup water, 2 level tblspns. cornflour, ½ pint whipped cream

Place berries in saucepan with sugar and water, simmer gently until soft. Blend cornflour with little cold water and stir into hot fruit. Stir until well thickened. Turn into bowl and chill. When cold, fold in whipped cream.

---

---

### GOING CAMPING???

**There is still time before Winter  
Come to "KOORONGA"**

#### DANDENONG REGION CAMPSITE

8 hectares of beautiful bushland 6 kilometres north of Dandenong. Hot and Cold Showers. Septic Toilets. Contact Mrs A. Mutton, 18 Hillside Ave., Dandenong 3175 (telephone 792 5406) for information and bookings.

Please note that experienced campers may camp during winter months.

# A Page from the Brownie Guide Silver Jubilee Book

## PRAYERS AND VERSES



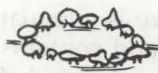
### Our Prayer

Thank-you for our Queen.  
 She is a lovely lady and we pray that  
 you will guide her as she rules our country  
 Please be with her family.  
 Amen



Our Queen,  
 to us means kindness,  
 beautiful, gracefulness,  
 there she sits,  
 a face full of happiness,  
 we are glad you have  
 ruled us for 25 years.

Heavenly Father, We pray for our Queen and  
 her family. Bless the Queen especially and  
 give her the health and strength she needs to  
 do her work. We thank you that she and her  
 family serve our Commonwealth so well.  
 Amen.



Once a young princess  
 Now a regal Queen  
 Has reigned for many years  
 With thoughts for youth-and progress  
 Has reached her silver jubilee.



### Our Queen

I like our queen,  
 She'd probably like me.  
 Sometimes I help her  
 I'm a Brownie you see  
 I try to be good  
 To help our queen.  
 By keeping Australia  
 Nice and clean



From hill to hill, for mile on mile,  
 The bonfires were plain to see,  
 They helped to mark the twenty five years,  
 Of our Queens Silver Jubilee.

Brownies and Guides, from far and near,  
 While the new year turns to old,  
 Pray their Gracious Queen will still be here,  
 As her Silver turns to Gold.







## What is happening in the GUIDE SECTION?

### PATROL CHALLENGE 1978

Did you miss out on joining the 1977 patrol challenges?

Did you start and never finish?

Here is your chance to join our bigger and better 1978 patrol challenges.

This year we have a name for the patrols who succeed. It was suggested by Guides who wanted to remember our Chief Guide who died last year. Patrols who complete all three sets of challenges in 1978 will be recorded in a special book at Guide Headquarters as "OLAVE PATROLS".

There will be three sets of challenges in 1978. Two of these will be sent to patrols to do during their patrol time at Company or Patrol meetings. The third will be at a Field Day, with other patrols who have managed to reach that stage.

We hope all patrols will "have a go" at the "Olave Patrol" challenges. Here is how to start:—

1. The Patrol Leader registers her patrol by sending to:  
Olave Patrols  
Girl Guide Association  
20 Russell Street  
Melbourne 3000  
the names of her patrol and Company, and her own name and address. Enclose a *stamped envelope addressed to herself*.
2. On receipt of these details the Patrol Leader will be sent the first set of challenges. On completing these the patrol reports and is sent the second set. *Remember*, whenever you write to Guide Headquarters, include a stamped envelope addressed to the patrol leader and the names of your patrol and company — or we do not know who you are, and cannot send an answer.
3. The second set of challenges has to be completed and the report sent to Guide Headquarters by 29th September, 1978. A pennant will be awarded to patrols who reach this stage.

4. The third challenge will be at a Field Day held during the last weekend in October. Only patrols who complete the first two sets of challenges will be eligible to attend. Field Days will be arranged in selected country and metropolitan centres. For completing the third challenge at the Field Day, each girl participating will get a belt badge. The colour of the badge will denote the standard the patrol achieves at the third challenge.

*Guiders* — give your patrols the opportunity to use their patrol time productively and enjoyably — encourage them to tackle the challenges.

### JUMBUNNA

February is "selection" month.

Last October Region Commissioners were notified of the quota of Patrol Leaders their Region could send to Jumbunna.

By now Guiders should have submitted the names of 13-year-old Patrol Leaders who they confidently recommend as suitable to attend the gathering. Contact your Region Commissioner if you have any questions.

The selection meeting will take place in your Region. Names of the girls chosen in your Region will be sent to me and we shall welcome them as Victoria's contingent.

It is not only the chosen Patrol Leaders who can be part of Jumbunna — all Guides can be involved. In September issue of *Matilda* I asked that Guide Companies help their Region representatives with their "Discovery Books". Compile some pages about your town or suburb to add to the books.

Even more exciting is the final campfire at Jumbunna to which every Guide in Victoria is invited. Start making plans for the Company to visit Ballarat on Saturday, 20th May. There will be further details in April issue of *Matilda*.

YVONNE JAMES

# RANGERING AROUND

## RANGERING AROUND

Ranger Guides, Rangers and Ranger Guide Leaders! It is very important that ALL members of the Ranger Section read Matilda each month to keep up to date with our news and information. In future only FOUR circulars will be sent to Units during the year, and these will contain application forms for Fixtures and other events. Suggestions and information must be sent in early for publication.

JEAN TWIST  
Ranger Adviser

## THANK YOU

This letter was received from the 'Jersey Wildlife Preservation Trust' in reply to a donation sent by the Victorian Ranger Section.

Dear Mrs Twist,

We are indeed most grateful to receive your very generous donation from the Victorian Girl Guides Association.

This will go directly towards our essential work to breed in captivity those species which are about to disappear in the wild. It is good to know you all share our concern, and I only wish you could come to see it for yourselves.

I enclose two newsletters which will give you some idea of our current programs.

SIMON HICKS  
Trust Secretary

## "INTERNATIONAL SUNRISE"

At Girl Guide Headquarters on Sunday, 19th February, 7.30 a.m. to 10.30 a.m.

Join with Ranger Guides, Rangers and leaders from other Units to celebrate THINKING DAY, and think about friends in countries throughout the world.

Uniform to be worn. Cost 50 cents. Let members of Central Committee know who is coming. Application forms were in the November Circular.

## ARCHERY DAY

Saturday, 15th April, 1978

Do you want to be a Robin Hood? Then keep the date free and join in this Bow and Arrow activity. More information next month.

## STATE-A-THON

STATE-A-THON to aid the ANTI CANCER COUNCIL of Victoria: We aim to raise at least \$4,000.00 to buy special equipment to help a doctor who is carrying out research work at St. Vincent's Hospital.

RANGER GUIDES/RANGERS and RANGER GUIDE LEADERS! What are YOU doing to help this project? We have heard of some fantastic THINGS being done — Tramp a Thons, Trike a Thons, Push a Thons, etc. — January, February and March are the months for ALL UNITS to do their THING-A-THON, and all money MUST be in to Mrs J. May, 119 Johnstone Street, Broadmeadows West 3047, no later than 23rd March, 1978; so that we can present our cheque to the Anti Cancer Council at the RALLY on 9th April. Sponsor Forms are available from Secretary to Advisers at Headquarters.

## RANGER STATE-A-THON RALLY

Everyone is welcome to come to the Rally for Anti-Cancer Council on Sunday, 9th April, between 10.00 a.m. and 2.00 p.m. on the Yarra Bank, Alexandra Avenue, Melbourne. Barbecues are available, bring your own lunch and a cup for cordial.

Because of the danger of having a large number of people on the road at one time we are asking each REGION RANGER COUNCIL to organise a team of TEN (as well as those coming by ordinary transport) to "a-thon" to the Rally.

We hope everyone will arrive between 10.00 a.m. and 11.00 a.m. so that we will have a large crowd in attendance when we present our CHEQUE to the Anti-Cancer Council.

There will be lots of action; come and cheer the canoeists in the Mini Marathon on the river, and encourage the teams as they arrive at the Yarra Bank.

## RANGER SECTION SCOTTISH BALL

Keep your ears to the ground for further news about the 1978 Ranger Section Debutante Ball, which is to be run by Greensborough 'Nillumbik' Rangers in Heidelberg Town Hall, Ivanhoe, on Friday, 14th July.



## FIXTURE LIST — 1978

### January:

20th — Long Hike — Bogong and Beyond.  
Unit activities for State-a-Thon in aid of Anti Cancer Council.

### February:

19th — Thinking Day Breakfast.

### March:

4th-5th — Regatta and Train Trek to Boort.  
Unit activities for State-a-Thon.

### April:

Unit activities for State-a-Thon.  
8th — Rally for State-a-Thon.  
15th — Archery Day.

### May:

Region Fixtures.

### June:

24th-25th — Ranger Guide Ranger Conference.

### July:

Ranger Guiders' Conference.  
Ranger Section Dinner.  
14th — Ranger Section Debutante Ball.

### August:

Disco.  
Region Fixtures.  
27th — Flinders Ranges and Beyond.

### September:

Bush Survival Weekend.  
Region Fixtures.

### October:

Halloween Night.

### November:

Guinness Book of Records Event.  
Tapestry Activities Lightweight Camp.

### December:

Central Committee Breakup.

## RANGER RED RATTLER REGATTA

When: 4th-5th March, 1978.

Where: Lake Boort, Boort.

Who: All Ranger Guides, Rangers and Ranger Guide leaders.

Meet: 7.15 a.m., at Spencer Street Station. Train will also pick up at Kyneton and Bendigo at about 9.00 a.m. and 9.50 a.m.

Return: To Spencer Street Station at about 8.30 p.m. on 5th March. Hospitality will be arranged in Melbourne on Friday night if you need it.

Cost: \$12.00, which includes accommodation, food (except for Saturday lunch) and Regatta fees . . . Do not miss this tremendous chance to take part in all sorts of water activities — rowing, canoeing, swimming and coxing events; and have lots of FUN on the train trek as well as the FANTASTIC experience of being part of a Ranger Section Regatta. Contact Pauline Kenned on 857 5507 for further information.

## RANGER GUIDE RANGER CONFERENCE

### Who am I? Who is my neighbour?

Where: Mentone Girls' High School.

When: 24th-25th June, 1978.

ALL Ranger Guides and Rangers in Victoria are eligible to attend this Conference, and at least two girls from each Unit are expected to be present. Guiders may attend as observers.

There will be a special Sunday morning workshop for Rangers (18 to 25 years).

Keep this weekend free and watch for more information next month.

Application forms will be with February Circular.

## FLINDERS RANGES AND BEYOND

### 27th August — 9th September, 1978

For Ranger Guides and Rangers. You asked for it, girls, here it is.

A 12 day camping tour into the outback that (weather permitting) will include an overnight bush camp on the shores of Lake Eyre. How many people do you know who have been?

You will also hike to the top of St. Mary's Peak for an encompassing view of parklike Wilpena Pound; dip into early history, visiting copper mines worked 100 years ago; live again the struggle of uranium exploration before the turn of the century, and compare the new; enjoy the thrill of a scenic flight over some of Australia's most rugged mountains and travel by open four wheel drive vehicles through incredible mountain country on the Ridge Top Tour.

Travel will be in comfortable air-conditioned coaches.

Cost will not exceed \$150.00 all inclusive. Details and application form will be in February Circular.

# DOWN IN THE ARCHIVES

It is probable that most of the Brownies, Guides and Ranger Guides who bring along a contribution for the Thinking Day Fund know they celebrate on this day because the Founder and the World Chief Guide were both born on the 22nd February, the former in 1857 and the latter in 1889. Do they know that the Baden-Powell family went in for sharing birthdays? Their son Peter and his wife were both born on 30th October their younger daughter Betty and her husband keep 16th April as their joint birthday and the second son of Heather Baden-Powell, Timothy King, was born on Thinking Day in 1946.

Way back — more than fifty years ago, at the 4th World Conference in 1926, one of the French delegates suggested that Guides and Girl Scouts should have one day in the year that would be dedicated to the Movement. It was not to be a day of huge gatherings and rallies, but a day for individual Guides and Girl Scouts to think of each other and to send greetings to their friends across the seas. The joint birthday of the two World Chiefs seemed the obvious day to select and it soon became known as Thinking Day.

A few years passed, and at the 7th World Conference, held in Poland, the delegates were discussing finance. Although the quota paid by each member country covered the expenses of running the World Bureau, there was nothing left over to help new and struggling Associations. So another suggestion was made, this time by one of the French delegates, that as well as sending greetings and thoughts, each girl should send the equivalent of one penny on the birthday of the Chiefs, to be used to help Guiding wherever it was most needed. The idea was launched by Lady Baden-Powell in January 1933, and in the first year £520.12.6 was raised.

I have been reading in some old magazines of the many different ways in which the money is presented at unit meetings, or larger gatherings of Districts or Divisions. Lighted candles very frequently come into the ceremonies, often being made by the girls themselves. Maps and flags and badges and uniforms from other lands all form part of the evening. One Guide company, particularly interested in first aid, decided that each patrol should choose one country, and stage and treat an 'accident' more

or less typical: e.g. Guides dressed in the uniforms of Sudan treated a case of sunstroke, while Guides from India dealt with a case of snakebite. Another unit asked each patrol to improvise some form of typical transport — rickshaw, camel, canoe etc. Camp blankets played their part in the ceremonies, with the money being placed on badges from foreign countries, sometimes those places which had received help from the Thinking Day Fund, and the meetings often included national foods, sometimes having been cooked by the girls during the evening.

MARY LAMBE



## WOODING DAYS

Cressy Guides were unable to go to Britannia Park to work on the Wooding Day, so, over a period of three weekends, we worked up here and now have two large depots of sawn wood to be taken to Britannia Park when we find ways and means. All this wood came from plantations burned out during the Western District fires. The plantations had to be cut down for safety reasons.

This service, a patrol effort, was a lot of hard work. We had blistered hands, splinters and aching backs for days! It was great to see every one of our Guides taking part.

Highlights of the exercise included "Frankfurt Supreme" cooked over an old hubcap covered with bird wire.

KATHY REYNOLDS  
1st Cressy Guide Company

# KNOW YOUR REGIONS

## Wimmera Region

*"... The view was exceedingly beautiful over the surrounding plains; shining fresh and green in the light of the morning. The scene was different from anything I had before witnessed in New South Wales or elsewhere. A land so inviting and still without inhabitants! As I stood, the first European intruder on the sublime solitude of these verdant plains, as yet untouched by flocks or herds, I felt conscious of being the harbinger of mighty changes and that our steps would soon be followed by the men and the animals for which it seemed to have been prepared."*

These words were written by Major Thomas Mitchell as he began his journey of exploration across the Wimmera Plains.

Crossing the Loddon and Ovens Rivers, he then came to the Wimmera River which he named on 15th July, 1836, using the Aboriginal name for the stream.

The Wimmera-Mallee is part of the Lower Murray Basin which once lay beneath the Southern Ocean. The gentle fall of the land from the Grampians helps the river flow through the plains of flood deposits, over gravels and sands to Lake Hindmarsh and on to Lake Albucutya, then on to Wyperfield where it loses itself in the desert sands.

Major Mitchell found inhabitants of the Wimmera Plains — numerous campsites by the rivers and creeks. Tribes called "Mukjarawaint" and "Kurm-e-laks" and others made the native tracks between water points which were later followed by white men, and which in many cases, became the roads of today.

Along the waterways canoe trees may still be found, and occasionally a grinding tool or stone axe, the remains of camp middens, may also be seen.

It was the Overlanders, squatters and surveyors who continued the exploration. Cattle were driven from the Murray to Portland in 1837. Every station had some tragic tale of killings and reprisals as the aborigines resisted our early settlement of "these verdant plains".

The Ebenezer Aboriginal Mission at Antwerp was a major attempt to help them in 1859. The Mission church was built in 1874 and the ruins, which have

been partially restored, are there with the graves of missionaries and aborigines side by side.

On the western side of the Wimmera is "The Little Desert", perhaps not a verdant plain, but beautiful in its own way. The Little Desert shelters some 140 species of birds including the Lowan (or Mallee Hen) with its remarkable sand mound hatching method which can be seen at Kiata Lowan Sanctuary and at Wyperfield. During the spring the Rainbow Birds fly in from Indonesia to nest here in the desert sands and are seen in numbers at the Wail Forest Nursery. Spring also brings the heaths, boronia, scarlet running postman, white riceflowers, melaleucas, many orchids, rushes and banksias to scent and colour the scene. Many unusual creatures inhabit the dunes — rare Mitchell hopping mice, pygmy possums, coppertailed skinks, mimicking snake lizards, painted dragons, tree dragons, velvet geckoes, feathertail and sugar gliders, desert copperheads and field mice. Around the soaks, red necked wallabies, black faced kangaroos and emus gather towards evening while echidnas waddle out to hunt for food.

Wimmera Region is divided into four Divisions — Lowan, Southern Mallee, Wimmera East and Wimmera West. In *Lowan Division* we have four Districts — Rupanyup (Settlement was first named Karkaroc, then Lallut in 1875, within the year it became Rupanyup . . . the aboriginal word rubunyup meant tree by swamp where natives camp); *Minyip* (surveyed in 1875); *Murtoa* (called Marma Gully and a Guiding Field Day was held in 1932 indicating that Guiding began about that time (Lake Marma is close to the town); *Warracknabeal* on the Yarriambiack Creek, settled in 1867, present Guiding units commenced in 1954, although Guiding was in Warracknabeal prior to Second World War, but no records are available.

*Southern Mallee Division* consists of *Hopetoun*, the centre of the shire of Karkaroc (the township was named after John Adrian Louis Hope, the late 7th Earl of Hopetoun, who was Governor of Victoria and the first Governor General of the Commonwealth of Australia. Lord Hopetoun often visited the town as guest of the late Edward Harewood Lascelles, the father of the Mallee, whose courage and enterprise was largely responsible for opening up the Mallee. Lake Lascelles and Lake

Corrong are close by and Wyperfield National Park is 45 kilometres away. Guiding is flourishing — a new Guide and Scout Hall was opened recently; *Sea Lake* (near Lake Tyrell) and *Woomerlang*.

In *Wimmera East Division* there is *Birchip* in the centre of the division; *Charlton* on the Avoca River (the first Guides were enrolled in 1956). *Donald*, near Lake Buloke, has a campsite at Mt. Jeffcott. The town was named after William, James and John Donald who, with William Hamilton, took up the station in 1844. It was proclaimed a township in 1872. Guiding began there in 1931. *St. Arnaud* records show that Guides were active here in 1921, and Rangers in 1922. *Watchem* Brownies are very active and, like all others, love Pack holidays. *Wedderburn* is on the eastern boundary of the Region and has its Annual Gold Dig Festival and a Eucalyptus factory. *Wycheproof* (*Witchi-Poorf* — *Witchi* means grass and *Poorf* means hillcap or crest) township celebrated its centenary in 1967. In 1946 it is recorded that Guides were helping at the hospital — they still do.

And in *Wimmera West Division* we have *Dimboola* which takes its name from *Dimbula* in Ceylon. A surveyor chose the name after a visit to Ceylon (it means Land of Figs) *Dimboola* was originally known as "Nine Creeks", development started in 1859 and the railway came through in 1882. The *Wimmera* River flows between the town and "The Little Desert". The Region campsite "*Arura*" nestles in the bend of the river and close to the desert. Guiding began in 1932. *Horsham* — it is claimed by Phillip Firebrace Darlot that his father J. M. Darlot founded *Horsham* on the Aboriginal *Corroboree* ground by the *Wimmera* River Crossing on *Brighton Run* in 1844. Guiding began in 1926 and built a Guide Hall in 1953. In 1947 *Horsham* Guides recall with pride the visit of *Lady Baden-Powell*. *Jeparit*, an aboriginal name for "Home of Small Birds", is an agricultural town situated on the banks of the *Wimmera* River. Explorer *Edwin John Eyre* passed by the site in 1838, the township started in 1889. *Sir Robert Menzies* was born at *Jeparit*. There is a large freshwater lake — *Lake Hindmarsh* — and the *Wimmera Mallee Pioneers Museum*. *Kaniva* was first known as *Budjik Hill* in 1881, a year later the name *Kaniva* was derived from "*Kanivae*", the name of a shepherd's hut on *Tatiara Run* which encompassed land where *Kaniva* now stands. *Kaniva* is only a short distance from the western end of the *Little Desert*. *Nhill*. How this name originated is speculative, the name given by the natives "*Nyell*" (mist over water) could have been written *Nihill* and later *Nhill*. The railway came there in 1887. It is also close to the *Little Desert* and has a memorial to the draught horse, which toiled with the pioneers in Australian agriculture. *Rainbow* is built on portion of what was once *Albucutya Station*, taken up by *Coppack* in 1846. The name

"*Rainbow Rise*" was taken from a crescent shaped ridge west of the town where multicoloured wild flowers flourished. The town was surveyed in 1899. *Wyperfield National Park*, *Lake Albucutya* and *Lake Hindmarsh* are all close by.

"A Warm Welcome Awaits in the Wimmera".

LESLEY REID ("Kara")

\* \* \*

## BADEN-POWELL MEMORIAL HOMES

The project is progressing well although now running at a slightly lower tempo, as the *Trefoil Guild* through constitutional reasons was unable to give a decisive vote at their Annual General Meeting in October.

Money continues to roll in — the sale of pens has been an overwhelming success, and other fund raising events are proving profitable.

We received an invitation from the Church of England Retirement Homes Board, to consider the prospect of us co-operating in their proposed Village Complex at *Doncaster*. From information gained at the ensuing meeting, it would seem the *Guild*, and both *Scout* and *Guide Movements*, would have much to gain from this suggested consolidation.

The Church of England project's prime aim is to provide housing for aged persons needing and desiring the security of total care.

It is intended that the Village, to be built on a 54 acre site, will provide about 380 cottages, two large hostels with accommodation for sixty persons, and a sixty-bed nursing home, which will also provide medical services for all, a meals on wheels service, a community hall, a general shop and recreational facilities.

There are many reasons for considering this proposition.

The Church of England has experience in building the type of units that we envisage, land under option, and planning well advanced, and experience of total care.

Any of our flow over, former *Scouts* and *Guides* will always be welcome and it could solve several of our legal problems.

It is interesting to note that while we might be part of a large complex, we would always maintain our identity, our part of the Village being known as the *Baden-Powell Homes*.

However, there is still much to be done before the project commences. A more detailed report of what we are going to do is being prepared and will be available in due course.

# COMMISSIONERS' CONFERENCE

Friday, 24th February to Sunday, 26th February 1978 at Monash University

Travelling from the city along Dandenong Road, turn left into Wellington Road, then left into Blackburn Road, first left into Normanby Road and left in second service road to car park and Halls of Residence, the Conference venue. Location map obtainable at Headquarters

## PROGRAM

### Friday

- 3.00 p.m.—Registrations, room allocations in Farrer House foyer.
- 5.30 p.m.—Pre-dinner drinks.
- 6.00 p.m.—Dinner.
- 7.30 p.m.—Meet and Mix.
- 8.00 p.m.—Ceremonial Opening. NOW IT IS OVER TO US — Mrs M. A. Buntine, O.B.E.
- 8.45 p.m.—Informal Supper.  
—Films in Conference Room.

### Saturday

- 7.50 a.m.—Morning Prayers.
- 8.00 a.m.—Breakfast.
- 9.00 a.m.—Meet the Advisers.
- 9.15 a.m.—Advisers' Sessions.
- 10.30 a.m.—Morning Tea.

- 11.00 a.m.—Advisers' Sessions.
- 12.15 p.m.—Roll Call.
- 12.30 p.m.—Lunch.
- 1.45 p.m.—THIS IS MY LIFE — Miss Wendy Swift.
- 2.15 p.m.—Training Department
- 3.15 p.m.—Afternoon Tea.
- 3.45 p.m.—OPEN FORUM  
Chairman — Mrs. Rosemary Henderson; Panel — Dr. Kay Patterson; Mrs Leita Cook; Mrs Janet Phelan; Miss Linda Sylvester.
- 5.00 p.m.—Region Commissioners — Camp sites information; Films; Free time.
- 6.00 p.m.—Pre-dinner drinks.
- 6.30 p.m.—Dinner.
- 8.00 p.m.—Campfire Supper.

### Sunday

- 8.15 a.m.—Breakfast.
- 9.30 a.m.—Guides' Own in Religious Centre.
- 10.30 a.m.—Morning Tea.
- 11.00 a.m.—Question Time: Advisers.
- 12.30 p.m.—Lunch.
- 2.00 p.m.—Guest Speaker: Miss Dorothy Pizzey.
- 2.45 p.m.—Announcement of new Committee.
- 3.00 p.m.—Thoughts from Mrs L. Turnbull, Assistant State Commissioner.  
—Convener will close Conference.

Meals will be served in Farrer Dining Hall and refreshments in Howitt Hall.

Meetings will be held in Deakin Hall Dining Room.

For further information please telephone Anne Scott on 818 6922 or Margaret Haynes on 878 8634.

Queries re money should be addressed to the treasurer, Joan Faichney, on 232 1985.



**BROWNIES, GUIDES, RANGER GUIDES, RANGERS, LEADERS, COMMISSIONERS, LOCAL ASSOCIATION AND TREFOIL GUILD MEMBERS, FAMILIES, FRIENDS — ALL ARE INVITED TO A**

**PERFORMANCE by the STROLLING PLAYERS**

**2.30 p.m. to 3.30 p.m. on Saturday, 18th February  
at Ross Hall, M.C.E.G.G.S, 84 Anderson Street South Yarra**

**ADMISSION BY DONATION — 30 CENTS**

Dear Readers,

Thank you for the many letters, reports and photographs which continually fill my mail box. It is always a pleasure to read your news and, even though there is often insufficient space to reproduce it all, it is greatly appreciated.

If you send your news, etc., as it happens, you will not need to remember that *material* to be considered for possible inclusion in an issue *must be with me by the first of the month prior to the month of publication*. Therefore, if an article about an event in June does not reach me until mid-August the earliest it could be published (even supposing space available and balance of content permitted) would be October. So please send your reports early.

We are now able to reproduce a wider variety of your *photographs* and *illustrations*. Clear, glossy, good quality, black and white action prints are best for our purposes and black (Flair or Pentel pen) line drawings on opaque, white, undamaged (no pins or staples please) paper give good results.

Unless otherwise indicated in *soft pencil* on the back, photographs will be forwarded to Public Relations Department where they may be used for display.

You do not need to be a brilliant writer to have material accepted for publication. Your facts and thoughts, preferably typed, double spaced on one side of paper only, are all that is important.

*Advertisements* for coming events or of articles for sale, etc., are acceptable only if space permits, they comply with policy and are *accompanied by payment* (cheque or money order only, payable to Girl Guides Association). Present charges are \$1.00 for every 10 words or part thereof. (A 14 word advertisement would cost you \$2.00.) Display advertisements are slightly dearer.

I would like to think that every assistant leader receives her own copy of *Matilda* each month.

*Subscriptions* may be taken out at any time (although, to simplify administration, the subscription year runs from May until April of the following year) on application to *Headquarters* either personally, by letter or the form published in *Matilda* each March and April.

Please note that *subscriptions* and *changes of address* or *personnel* are sent to Headquarters and that other *material* and *advertisements* with payment are sent directly to me at 31 Hampshire Road, Forest Hill, .3131.

It is a delight to hear from *Matilda's* contributors, especially the regular ones, and to get to know you through your letters. It is an even greater pleasure to meet so many of you personally at conferences and trainings.

I look forward to your further contributions.

JOAN RICHARDSON  
Editor

---

---

### PUSHING "MATTIE" OFF!

I thought that I would write a "piece"  
About our "Dear Matilda" —  
To say how I had "waltzed" her off  
After they had "dressed" her.

The door was always open —  
The welcome mat was spread  
When I went to Headquarters  
So "Matilda" would be sped!

The years kept creeping on,  
And brown hair turned to grey:  
Reluctantly, I realised  
That I had had my day!

Well, the time to send "Matilda"  
Dawns quietly, now, for me;  
Regrets, of course, are many  
But the wisdom I can see.

A few stray tears are welling  
As down the years I gaze —  
But "Matilda" always gets away  
Through sunshine — or through haze.

So now I'm saying "Thank You" —  
Which I should have said before —  
As sprightly "Miss Matilda"  
Finds her way right to my door.

MOLLIE STILLWELL

(Mrs. Stillwell has now retired from taking the more than 3000 mail-ready copies of "Matilda" to the Post Office for distribution each month.

For over 35 years Mrs Stillwell has given "Matilda" a gentle push along the way to her readers and I am glad that a copy finds its way, all by itself, to the letter box of this devoted "Matilda" helper.—J.R.)



# TRAINING CALENDAR

**Commissioners and Unit Leaders** with the necessary experience are welcome to apply for **ANY** training.

Applications should be sent **prior to the closing date and be accompanied by the Training fee and a stamped self addressed envelope**. Early application for all trainings is recommended. Training fee is \$3.00 unless otherwise stated.

**For a full campcraft course the fee will be \$6.00 — this does not include the actual cost of the weekends (food, transport, etc.).**

## Stage 1 Training

**Creswick.** Weekends 4th-5th March and 8th-9th April, times 10.00 a.m. to 4.00 p.m. Applications to Mrs G. Platt, Lot 109 Beresford Crescent, Darley, via Bacchus Marsh, 3340, by **20th February**.

**Heywood.** Note: Change in location from Hamilton. Weekends 4th-5th March and 15th-16th April, times 10.00 a.m. to 4.00 p.m. Apply immediately to Mrs F. Jervies, "Karingal", Hamilton, 3300.

**Headquarters.** Thursday 9th, 16th, 30th March, 6th, 13th, 20th, 27th April, times 7.00 p.m. to 10.00 p.m. Applications to Training Department, Guide Headquarters, by **20th February**.

**Headquarters.** Wednesday 22nd, 29th March, 5th, 12th, 19th April, times 10.00 a.m. to 3.00 p.m. Applications to Training Department, Guide Headquarters, by **1st March**.

**Headquarters.** Weekends 1st-2nd April and 6th-7th May, times 10.00 a.m. to 4.00 p.m. Applications to Training Department, Guide Headquarters, by **15th March**.

**Lakes Entrance.** Weekend 6th-7th May and 17th-18th June, times 10.00 a.m. to 4.00 p.m. Applications to Mrs M. Frawley, P.O. Box 641, Sale, 3850, by **20th April**.

**Moorleigh.** Weekends 18th-19th March and 15th-16th April, times 10.00 a.m. to 4.00 p.m. Applications to Mrs L. Jones, 14 Walker Grove, Cheltenham, 3192, by **28th February**.

**Noble Park.** Weekends 4th-5th March and 1st-2nd April, times 10.00 a.m. to 4.00 p.m. Applications to Mrs B. Lardner, 51 Bundeena Avenue, Noble Park, 3174, by **20th February**.

**Warrnambool.** Weekends 4th-5th March and 15th-16th April, times 10.00 a.m. to 4.00 p.m. Note: Please notify RTA if hospitality is required. Applications to Mrs J. Swinton, 260 Merri Crescent, Warrnambool, 3280, by **19th February**.

**Goulburn Region.** Weekends 8th-9th April and 6th-7th May, times 10.00 a.m. to 4.00 p.m. Further information available from Mrs M. Murphy, 73 Balaclava Road, Shepparton, 3630.

**East Metropolitan Region.** Weekend 6th-7th May plus 18th June (outdoor day), plus 1st-2nd July, times 10.00 a.m. to 4.00 p.m. Applications to Mrs F. Ludbrook, 5 Curnola Avenue, Doncaster, 3108, by **20th April**.

## Stage 2 Training for Warranted Leaders

**Wodonga.** Weekends 1st-2nd and 29th-30th April, times 10.00 a.m. to 4.00 p.m. Applications to Miss H. Smith, 21 Cusack Street, Wangaratta, 3677, by **15th March**.

**Kyabram.** Weekends 4th-5th March and 1st-2nd April, times 10.00 a.m. to 4.00 p.m. Applications to Mrs M. Murphy, 73 Balaclava Road, Shepparton, 3630, by **20th February**.

**Preston.** Thursday 2nd, 9th, 16th, 23rd, 30th March, 6th, 13th, 20th April, times 7.30 p.m. to 10.00 p.m. Applications to Mrs M. Teape, 33 Sparks Avenue, Fairfield, 3078, by **16th February**.

**Pyramid Hill.** Weekends 25th-26th February and 8th-9th April, times 10.00 a.m. to 4.00 p.m. Applications to Mrs B. Whelan, 8 Hope Street, Kangaroo Flat, 3555, by **16th February**.

**Mornington Region.** Weekends 29th-30th April and 24th-25th June, times 10.00 a.m. to 4.00 p.m. Further information may be obtained from Mrs F. Bucknell, P.O. Box 46, Mt. Martha, 3934.

**Wimmera Region.** Weekends 6th-7th May and 17th-18th June, times 10.00 a.m. to 4.00 p.m. Further information may be obtained from Mrs M. Creek, RMB 358, Nhill, 3418.

## Accent on Leadership

**Special Subjects for Guiders who have done Stage 2** — think of this as **STAGE 3** if you like, **but it will be different from what you have done at Stages 1 and 2**. Every guider who comes to it has said so! **The main aim by activities and discussion is to help YOU as a person — as a leader.**

**Goulburn Region.** Wednesday 5th, 12th, 19th, 26th April, 3rd May, times 10.00 a.m. to 3.00 p.m. Further information may be obtained from Mrs M. Murphy, 73 Balaclava Road, Shepparton, 3630.

## Pack Holiday Training

**"Mallengeeba", Wannon River Campsite.** Weekend 18th-19th March, times 10.00 a.m. Saturday to 4.00 p.m. Sunday. Note: Cost to be advised. Applications to Mrs Jervies, "Karingal", Hamilton, 3300, by **28th February**.

## Campcraft Training

Note: Guiders who are unable to camp could consider the Indoor Permit, or, if you wish to give your girls some help in preparing for camp you may attend the **first weekend** of any of the following campcraft courses which is practical theory. Training fee for one weekend \$2.00.

**"Mallengeeba", Wannon River Campsite,** 4th and 5th March, times 9.00 a.m. to 9.00 p.m. Saturday and 9.00 a.m. to 4.00 p.m. Sunday, plus weekends 18th-19th March and 8th-9th April and 6th-7th May, times 9.00 a.m. Saturday to 4.00 p.m. Sunday. Note: Cost of weekends to be advised. Applications and \$6.00 to Mrs F. Jervies, "Karingal", Hamilton, 3300, by **20th February**.

**Woorayl Region.** Tuesday and Wednesday 28th February and 1st March, times 9.00 a.m. to 9.00 p.m. Tuesday and 9.00 a.m. to 4.00 p.m. Wednesday plus 4th-5th April and 2nd-3rd May (Tuesday-Wednesday), times 9.00 a.m. Tuesday to 4.00 p.m. Wednesday and weekend 17th-18th June (with guides), times 9.00 a.m. Saturday to 4.00 p.m. Sunday. Note: Cost of overnight stay and weekend to be advised. Applications and \$6.00 to Mrs J. Gaudion, 32 Blackmore Avenue, Leongatha, 3953, by **14th February**.

## Ranger Lightweight Training

"Mallengeeba", Wannan River Campsite. 4th and 5th March, times 9.00 a.m. to 9.00 p.m. Saturday and 9.00 a.m. to 4.00 p.m. Sunday plus weekends 18th-19th March and 6th-7th May, times 9.00 a.m. Saturday to 4.00 p.m. Sunday. Note: Cost of weekends to be advised. Applications and \$6.00 to Mrs F. Jervies, "Karingal", Hamilton, 3300, by 20th February.

## Camp First Aid

Headquarters. Tuesday 14th, 21st March, 4th April. Please note that this training is FULL. No more applications can be accepted.

## Local Association Training

Beechworth. Tuesday, 11th April, times 10.00 a.m. to 3.00 p.m. Applications to Miss H. Smith, 21 Cusack Street, Wangaratta, 3677, by 15th March.

## Make Musical Instruments from Household Discards

Headquarters. Tuesday, 18th April, time 8.00 p.m. to 10.00 p.m. Applications and \$1.00 to Training Department, Guide Headquarters, by 1st April.

## Nature Trailing

Botanical Gardens. Tuesday, 7th March, time 9.30 a.m. to 3.00 p.m. Note: Join us in finding new ways, new things in the park, ponds and gardens — ideas for outdoor days with your girls. Applications and \$1.00 to the Training Department, Guide Headquarters, by 24th February.

## Patrol Leader Training for Guide Guiders

Surrey Hills. 20th March, time 7.30 p.m. to 10.00 p.m. Applications and \$1.20 to Mrs F. Ludbrook, 6 Curnola Avenue, Doncaster, 3108, by 6th March.

# From the **GUIDE** **SHOP**

### THINKING INTERNATIONAL

Stamp Your Own — Thinking Day Stamp for letter-heads, invitation cards, etc. . . . . \$6.15  
Thinking Day Leaflet . . . . . 10c  
Thinking Day Song . . . . . 10c  
Thinking Day Badge (not worn on uniform) . . . . . 10c  
Thinking Day Greeting Seals — 10 per sheet . . . . . 25c

World Association Girl Guide/Girl Scout—  
Uniform Charts Numbers 1-4 . . . . . each 30c  
Badge Charts Numbers 1-3 . . . . . each 20c  
Flags of All Nations Charts . . . . . 25c  
Trefoil Round The World (Reprinting — available shortly)

Brownies Around The World — Book 1 . . . . . \$2.60  
Brownies Around The World — Book 2 . . . . . \$2.60  
Brownie World Painting Books Numbers 1-6 . . . . . each 45c  
Let's Look At — People of Other Lands . . . . . 49c  
My Home in — Series covering many countries each \$1.15  
Brownie Cut Out Dolls (Four dolls with uniforms for 18 countries) . . . . . \$1.00  
Games From Many Lands for Brownie Guides and Guides . . . . . 60c  
Guide Games and Recipes from many countries . . . . . 45c  
Various Song Books available with songs from many countries — Assorted prices  
Story of The Four World Centres . . . . . 90c  
Postcard — The Four World Centres . . . . . 15c  
Postcard — The World Flag . . . . . 10c

### STILL AVAILABLE:

1978 Girl Guides Calendar . . . . . 90c  
1978 Australian Pictorial Diary . . . . . \$2.50  
1978 Pocket Secretary, stamped with Guide Badge — in plastic cover — containing tear-out notebook, names, addresses, telephone numbers and diary. All replaceable. . . . . \$2.10

### NEW ITEMS:

'Stamp Your Own' —  
Stamps for stationery, etc., available for Guide, Brownie, Local Associations and Trefoil Guild . . \$3.50  
The Grampian Ranges by Road and Track . . . . \$2.85  
(Containing maps of the many tours and walks available in this area.)  
Wilson's Promontory National Park . . . . . \$3.00  
(Including History, Fauna, Track Notes, Walks and Maps.)  
Musical Fun With The Brownie Pack . . . . . \$2.55  
(A book for Brownie Guiders who are looking for ideas for musical activities to use in the Pack. Ideas for Pack Meetings, Pack holidays, special occasions and large gatherings.)  
Handcrafts for all Seasons Numbers 1-4 . . . . . 90c  
Amendments to 1976 P.O. and R. . . . . 30c  
Girl Guides 'Parker' Pen in presentation box . . . \$6.20  
(Dark blue, light blue, chocolate, maroon or olive green.)  
Australian Flag Leaflet (Describes the rules for flying the flag.) . . . . . 40c  
Lady's Scarf (Red and white or blue and white with attractive Trefoil design) . . . . . \$3.20  
Jubilee Sticker . . . . . each 3c  
per 10 25c  
Compass and Maps . . . . . \$1.35  
(Easy to follow — Finding your direction, sighting a landmark, reading maps, hiking with map and compass, making a sketch map)  
Brownie Skills (Containing indoor and outdoor activities) . . . . . \$4.00

**CONGRATULATIONS to the recipients of the following:**

**The Good Service Award**

Mrs K. Hillman, Ballarat.

**Guider Long Service**

(30 years): Mrs B. D. McNally, Belgrave; Mrs J. Crothers, Tallangatta.

(20 years): Mrs K. C. Rowe, Bendigo; Mrs H. Pullin, Yarraville.

(10 years): Mrs R. Ferguson, Montrose; Mrs P. Bennett, Golden Square; Mrs A. McNamara, Whorouly South; Mrs P. C. Miles, Wangaratta; Mrs R. Moser, Rosebud West; Mrs E. O'Donnell, Rosebud; Mrs N. Watson, Rosebud; Mrs R. Watt, Box Hill North; Mrs J. Joyce, Box Hill North; Mrs B. M. Larbey, The Patch; Mrs J. Jarvis, Yarra Glen; Mrs A. C. Lewin, Mildura South; Mrs J. Woolley, Morwell; Mrs M. Tormai, East Burwood.

**Combined Long Service**

(30 years): Mrs A. Vines, Highton.

(20 years): Mrs M. Needs, Inglewood; Mrs P. Webb, Whorouly South.

(10 years): Mrs W. Lyons, Doncaster East; Mrs Z. L. Power, Whorouly; Mrs B. Fox, Darnum; Mrs P. Atkinson, Ringwood East; Mrs P. Robson, Great Western; Mrs B. Wright, Highton; Mrs B. King, Portarlington; Mrs M. Hamilton, Highton; Mrs M. Creek, Nhill; Mrs M. Thomson, Great Western.

**Local Association Long Service**

(20 years): Mrs G. Craig, Bendigo; Mrs Womersly, Werribee.

(10 years): Mrs M. Potter, Bendigo; Mrs J. Davis, Bendigo; Mrs C. Birkett, East Doncaster; Mrs J. Selby, Yarrowonga; Mrs D. Grellet, Great Western; Mrs B. Bass, Great Western; Mrs M. Wilson, Manangatang; Mrs N. Loffel, Highton; Mrs M. Mitchell, Highton.

\* \* \*

**Thanks Badge**

Carrum-Bonbeach District Building Committee; Mr K. J. Giulieri, East Oakleigh; Mrs C. Ardley, Lower Templestowe; Mrs M. Leyonhjelm, Tarranyurk.

In December issue Mrs K. A. Scott was erroneously listed as receiving the Emu Award. We apologise.

Except for articles where copyright restrictions are indicated, material in "Matilda" may be reprinted in Guide and Scout magazines without prior permission. A credit line would, however, be appreciated.

**APPOINTMENTS AND WARRANTS**

A warm welcome is extended to the following:

**Region Commissioners**

Mrs R. H. Cross, Barwon; Mrs J. S. Edwards, Central Metropolitan.

**Division Commissioners**

Mrs P. Livingston, Swan Hill; Mrs J. C. Mander, Bellarine; Mrs E. G. Whitehead, Gellibrand; Mrs R. McNab, Keilor-Essendon; Mrs R. Morgan, Knox West.

**District Commissioners**

Mrs G. McRobert, Elmore; Mrs K. Hutchinson, Diamond Creek; Mrs K. A. Jolley, Essendon; Mrs S. R. Marshall, Ballarat Eureka; Mrs C. J. Grubb, Springvale North; Mrs J. Wain, Wodonga West; Mrs A. P. Mance, Highett; Mrs I. R. Fraser, Altona North; Mrs F. Dodson, Bayswater; Mrs J. Hillman, Upwey; Mrs C. R. Leask, Heathcote; Mrs H. J. Wagg, Riddells Creek; Mrs C. M. Webb, Cohuna; Mrs R. T. Andrew, Chelsea; Mrs W. R. Alexander, Kaniva; Mrs A. R. Watters, Invergordon; Mrs A. W. Brown, Doncaster; Mrs T. N. Watson, Elliminyt; Mrs W. S. Rodda, Nullawarre.

**Ranger Guiders**

Mrs B. Hocking, Mildura South Rangers; Mrs R. Beaumont, Cheltenham North Rangers; Mrs R. Shaw, 2nd Mt. Waverley Rangers; Mrs E. A. Frizelle, Echuca (Extension) Rangers; Mrs I. F. Boyd, Central Doncaster Rangers; Mrs M. S. Ahmed, Black Rock Rangers; Mrs L. Cornell, Canterbury Rangers; Miss J. A. Simmonds, Drouin Rangers; Mrs K. Heppleston, Maryvale Rangers.

**Assistant Ranger Guiders**

Mrs F. Williams, Bentleigh Rangers; Mrs G. Smith, Yarraville Rangers; Mrs B. Vandyk, Drouin Rangers; Mrs F. Newstead, North Ringwood Rangers.

**Guide Guiders**

Mrs W. Gardner, 1st Plenty; Mrs V. W. Kayler-Thomson, 1st Sunshine West; Mrs G. C. McEwan, 2nd Mildura; Mrs C. G. Smith, 1st Wendouree; Mrs A. De Groot, 1st Deer Park; Mrs J. R. Williams, 2nd Shepparton; Mrs P. Hull, 1st Karingal; Mrs J. McLeary, 1st Sea Lake.

**Assistant Guide Guiders**

Mrs J. A. Nicol, 3rd Bayswater; Mrs A. McLroy, 1st Highton; Mrs L. A. Saghy, 2nd Springvale; Mrs C. Jessep, 4th Traralgon; Miss A. Davidson, 1st Mitcham; Miss R. Drury, 1st Mitcham; Miss B. D. Hoare, 1st Harcourt; Mrs C. Gwillim, 1st Harcourt; Mrs B. Rollo, 2nd Donvale; Mrs R. K. Whelan, 1st Cowes; Mrs B. G. Dawson, 1st Dromana; Miss C. Smith, 2nd Heathmont; Mrs J. Thom, 7th Victorian Lone Guides; Mrs M. C. Suffern, 4th Boronia; Mrs P. Gray, 1st Boronia; Miss R. L. Brown, 2nd Yarraville; Mrs J. Mitchell, 1st San Remo-Newhaven; Miss B. R. Arthur, 2nd Strathmore; Miss J. M. Arthur, 2nd Strathmore; Miss S. Scrivener, 1st East Keilor; Miss M. A. Graham, 1st Wonthaggi; Mrs L. A. Woodward, 2nd North Ringwood.

**Brownie Guiders**

Mrs R. M. Hadden, 2nd Highton; Mrs K. W. Keane, 1st Hamilton; Mrs G. I. Glenn, 5th Boronia; Mrs J. R. Simmons, 1st Stratford; Mrs M. Slevin, 1st Grovedale; Mrs C. H. Sundblom, 2nd Aberfeldie; Mrs F. T. Stephens, 3rd Moe; Mrs D. Dedman, 4th Sunshine West; Mrs A. E. De Brabanden, 5th Sunshine West; Mrs W. D. Davis, 3rd Frankston; Mrs R. G. Parfett, 1st Warracknabeal; Mrs R. C. Florence, 1st Tongala; Mrs P. J. Barry, 1st Yarrowonga; Mrs J. A. Beachcroft, 3rd Bairnsdale; Mrs J. D. McLean, 5th Mt. Waverley; Mrs M. Ramsbottom, 2nd Lower Plenty; Mrs B. A. Hobbs, 1st Longford; Mrs E. Green, 2nd Wendouree; Mrs I. Kelly, 2nd Ocean Grove; Mrs J. Buntine, 1st North Ringwood; Mrs B. McGie, 2nd Heathmont.

### Assistant Brownie Guiders

Mrs B. Minter, 1st Shepparton South, Mrs M. J. Esler, 2nd Highton; Mrs N. Robertson, 4th Highton; Mrs L. Knight, 5th Boronia; Mrs W. Cannon, 1st Stratford; Mrs M. Goodwin, 2nd Montrose; Mrs D. J. Wood, 2nd Traralgon; Mrs J. O'Brien, 3rd Traralgon; Mrs B. Newbegin, 3rd Donvale; Mrs G. Thompson, 1st Tongala; Mrs R. McMahon, 2nd Bulleen West; Miss W. Sullivan, 2nd Koonung Heights; Miss C. Needs, 1st Inglewood; Miss M. Higham, 1st Yarrowonga; Mrs G. Costello, 1st Central Doncaster; Mrs W. E. Dixon, 4th Overport; Mrs T. H. Laukens, 5th Mt. Waverley; Miss J. Blessley, 1st Heidelberg; Mrs J. Trimble, 1st Manangatang; Mrs K. Dixon, 2nd Ocean Grove; Miss D. Morris, 1st Orbost; Mrs P. J. Foenander, 2nd Karingal; Mrs R. Noonan, 2nd Benalla.

### REGISTRATIONS

4th St. Albans Pack; 4th Bennettswood Pack; 1st Lakes Entrance Company; Newborough Ranger Guide Unit; 1st Blairgowrie Pack; 2nd Grovedale Pack; 3rd Bentleigh Pack; 1st Wodonga West Company; 4th Doncaster West Company; 1st Grovedale Company; Donvale Ranger Guide Unit; Kerang Ranger Guide Unit; Timboon Ranger Guide Unit; Newtc.wn Ranger Guide Unit; Mt. Beauty Ranger Guide Unit (Noojee); Maidstone Ranger Guide Unit.

### RESIGNATIONS AND RETIREMENTS

We acknowledge with gratitude the services given by the following, whose Warrants have been returned:

#### Region Commissioners

Mrs R. V. Pavia, Barwon; Mrs A. P. Leigh, Central Metropolitan.

#### Division Commissioners

Mrs M. B. Brereton, Keilor-Essendon; Mrs M. J. Davis, Cellibrand.

#### District Commissioners

Mrs N. H. Freeman, Moorabbin; Mrs B. M. Dermody, Eltham North; Mrs J. C. Chataway, Beaumaris; Mrs W. J. Llewellyn, Ballarat Eureka; Mrs E. L. Hunt, Elliminyt; Mrs L. A. Stevens, Reservoir West; Mrs B. Comeadow, Euroa; Mrs F. Berkery, Yea; Mrs L. M. Roos (Acting) Upwey; Mrs A. P. Kane, Chelsea; Mrs R. B. Wallace, Puckapunyal; Mrs J. Black, Altona North; Mrs R. S. Goodwin, Kaniva; Mrs R. I. Squire, Invergordon; Mrs J. Wedd, Doncaster; Mrs R. E. Gray, Kerrimuir; Miss S. W. Wirth, Fitzroy; Mrs J. D. Moody, Rye; Mrs B. J. Davis, Highett; Mrs M. E. Paterson, East Malvern-Gardiner.

#### Ranger Guider

Mrs R. G. Kittelty, Echuca (Extension) Rangers.

#### Assistant Ranger Guider

Mrs K. W. Waddington, Emerald-Lakeside Rangers.

#### Guide Guiders

Mrs E. G. Wallden, 1st Tongala; Mrs C. J. Zerby, 1st Meeniyah; Mrs M. W. Brammer, 2nd Kyabram; Miss G. Higgs, 1st Kyabram; Mrs K. J. Angwin, 1st Kyneton.

### Assistant Guide Guiders

Mrs R. Merlo, 3rd Echuca; Miss G. Merlo, 3rd Echuca; Mrs W. F. Montgomery, 3rd Wattle Park; Mrs B. Watts, 2nd Swan Hill; Mrs H. A. Mason, 2nd Melton; Mrs E. A. Frizelle, 4th Echuca (Extension).

### Brownie Guiders

Miss S. Graham, 3rd Montrose; Mrs R. Watts, 2nd Dingley; Mrs J. Henderson, 1st Katandra West; Mrs J. Williams, 1st Hamilton; Mrs F. N. Black, 3rd Morwell; Miss H. E. Wilson, 1st Morwell; Mrs H. W. Kluth, 1st Bonnie Doon-Merton; Mrs G. M. Cawley, 4th South Croydon; Mrs F. James, 1st Murrayville; Miss B. J. Allison, 1st Fairfield.

### Assistant Brownie Guiders

Mrs G. R. Dunn, 1st Montrose, Mrs K. W. Keane, 1st Hamilton; Mrs W. D. Davis, 2nd Frankston.

### BRASS RUBBING

Discover Brass Rubbing among medieval knights, lords and ladies.

Facsimilies of English monumental brasses brought to your unit meetings and girls shown the art of brass rubbing.

Enquiries — Margaret Angus, 16 Ingrid Street, Scoresby. Telephone 763 6811.

Note — not available Monday nights.

### KORUMBURRA 50 YEARS

Former Korumburra Guides, leaders and Local Association members are informed that celebrations will be held on 18th and 19th March. If you would like an invitation or have photographs or items of interest for display please contact Mrs N. Stubington, 35 Station Street, Korumburra, 3950.

### PHILLIP ISLAND FARM HOLIDAYS

Spacious attractive surrounds, beachfront, horse-riding, hay-rides, animals, etc. 4 new log cabins. Recreation hall. Families, schools and groups. Telephone Mrs Jeffrey on (059) 56 7288.

### NAMING A BABY (FOAL)

After visiting a farm, where horses are also bred, 2nd Bairnsdale Guide Company submitted names for a foal born a week after our visit.

The registration board chose "Second's Choice", one of our company's suggestions.

LORNA CHESTER