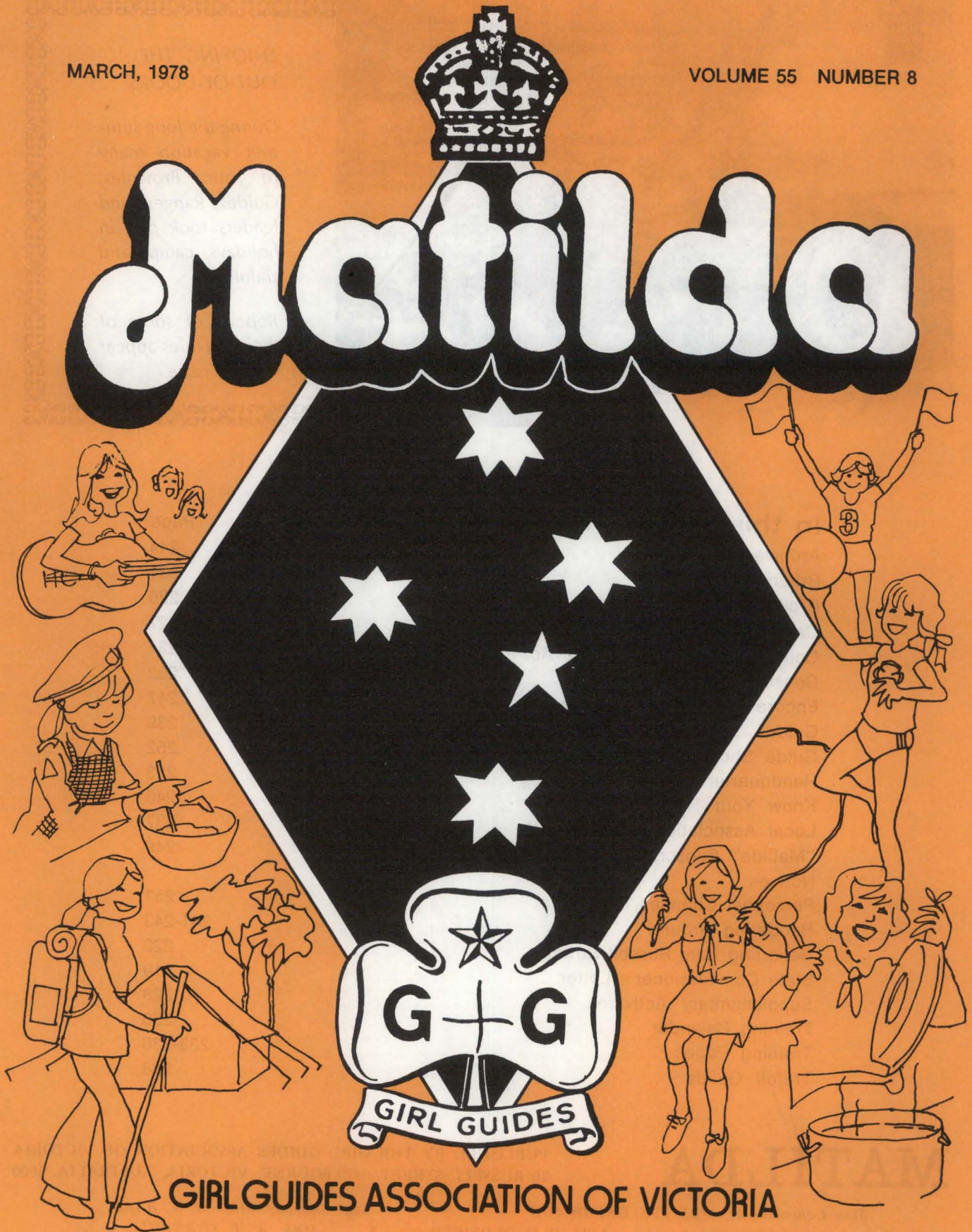


14-3-78-

MARCH, 1978

VOLUME 55 NUMBER 8

# Matilda



GIRL GUIDES ASSOCIATION OF VICTORIA



**ENJOYING THE  
OUT-OF-DOORS**

*During the long summer vacation many of our Brownies, Guides, Rangers and leaders took part in holidays, camps and trainings.*

*Reports of some of their activities appear in this issue.*

**In this issue . . .**

|                                     | Page    |
|-------------------------------------|---------|
| Archives                            | 244     |
| Britannia Park                      | 231     |
| Brownies                            | 225     |
| Camps and Holidays                  | 226-227 |
| Combined Scout and Guide Activities | 221     |
| Conservation                        | 232     |
| Encore '78 Application Form         | 247     |
| Guides                              | 239     |
| Guide Shop News                     | 252     |
| Headquarters Staff                  | 223     |
| Know Your Regions                   | 245     |
| Local Association Section           | 237     |
| "Matilda" Subscription Form         | 249     |
| Notices                             |         |
| Personnel Changes, etc.             | 251     |
| Rangering Around                    | 241-243 |
| Reporting from Russell Street       | 220     |
| State Commissioner's Letter         | 219     |
| Supplementary Activities            | 228     |
| Training Calendar                   | 250     |
| Training Pages                      | 233-236 |
| Trefoil Guilds                      | 238     |

# MATILDA

PUBLISHED BY THE GIRL GUIDES ASSOCIATION OF VICTORIA  
20 RUSSELL STREET, MELBOURNE, VICTORIA, AUSTRALIA, 3000

*State Commissioner: MRS. F. S. GRIMWADE*

*State Secretary: MISS M. W. BARR*

*Assistant State Commissioners: MRS. D. O. OLDFIELD*

*MRS. A. J. TURNBULL*

*Editor: MRS. L. I. RICHARDSON, 31 Hampshire Road, Forest Hill, 3131*



## From our State Commissioner

Christmas but many groups were from the country and everyone was very busy with end of year activities. My congratulations to all the winners and thank you to all who participated. I believe one Brownie Pack is continuing to recycle the containers — well done! I especially would like to thank Mrs Doris Spratling who worked so hard to co-ordinate this competition.

Dear Everyone,

The house is so quiet and has that tidy un-lived-in look! Martin and Ann have returned to school (complete with two full carloads of gear) and we now only have Rick and one or two of his University student friends working on the place.

I am finding it difficult to settle down after the holidays. I have spent much time reading, relaxing and working in the garden. I thoroughly enjoyed Esther Dean's Gardening Book — "Growing Without Digging". One topic which fascinated me was her method of sexing plants or determining soil or seed fertility. This is done by holding a piece of string to the end of which is tied a solid object over the plant or ground or seed. I have used a peg on a piece of fishing line. Female plants and fertile soil and seeds cause the peg to rotate clockwise, male or infertile soil cause it to swing from side to side and neuter plants have no reaction. I gather this is called 'Dowsing' and is similar to water divining. Needless to say the family (and others) think I am crazy but I am having great fun !!

As I wandered around with my peg I began to think how individuals can have positive or negative attitudes to Guiding. The positive ones are enthusiastic, energetic, convinced things will succeed, the negative ones are doubtful, unenthusiastic, convinced of failure. I hope that we are all the positive varieties and that our efforts this year will be as productive as my zucchini. The biggest one was eight pounds!

There will now be many units enjoying new equipment in units, halls or on campsites as part of their prizes in the Colgate-Palmolive 'Be-A-Sport' Help Young Australia Campaign. We had hoped to present prizes at Headquarters before

I am very pleased to tell you all that Mrs Robin Sadler, retiring Region Commissioner for Hume, has been appointed our new Lone Adviser. Robin has been involved with Guiding in many aspects and has an understanding of the isolated child. I have every confidence she will carry on the excellent work done by Mrs Jill Samman who worked so hard for Lones.

We have all been shattered recently by the shocking bomb explosion at the Sydney Hilton Hotel during the Region Commonwealth Heads of Government Conference, where innocent men lost their lives. It is a terrifying thought that Australia too is becoming a part of this ever increasing network of terrorism throughout the world.

Our young people confronted by the pressures of unemployment, drugs, adverse influences from so many sources now more than ever need the stabilising influence which is exerted by the Guide and Scout Movements. This thought was reinforced as I read an account of the Argentinian National Assembly, the theme of which was 'I, Woman Factor of Peace'.

The World Conference looms up and at the next Australian Executive meeting we will choose Australia's delegation. I was delighted to be able to entertain Mrs Banal from the Girl Scout Association of Iran and hear of their plans. It should be a wonderful conference in a fascinating country.

My love and best wishes to you all.

Joan E. Grimwade



# REPORTING FROM RUSSELL STREET



## LONE ADVISER

We are pleased to advise the appointment of a new Lone Adviser — Mrs W.F. Sadler, Bangalore Park, RMB 1160, Benalla, 3673. Robin Sadler needs no introduction to the members of Hume Region as she has just completed five years as their Region Commissioner, but getting to know her will be a treat in store for others, especially all Lones.

## DISCUSSION DAY — SATURDAY, 6th MAY

Would you like to share your views on matters which will come before the World Conference in September? The theme promises to be a most stimulating one —

“Lighting a Flame for Youth”

and the conference will close on the thought —

“Today their future is in our hands,  
Tomorrow our future will be in theirs.”

The Agenda items for this conference will be discussed at the Australian Association Assembly in June and your thoughts will be welcome. Among the items scheduled for consideration are —

The changing patterns in society — how should Guiding meet these?

Reaching minority groups — migrants, under-privileged children, aborigines, etc.

The structure of the Guide Association.  
The place of men in Guiding.

If you want to share in these discussions, come to Headquarters on Saturday, 6th May — 1.30 p.m. to 5.00 p.m. As it may be necessary to limit numbers, applications will be accepted on a first come-first served basis — please send your name and address to Miss Cathcart at Guide Headquarters.

## ALL ADULTS SEMINAR

30th September is an important date in our programme for the year so please note it in your diaries now. This is the day for our All Adults Seminar which will cater for all adults who are interested in the Movement and the girls it serves — Leaders, Commissioners, Local Association and Trefoil Guild members and parents. It will be held at the Presbyterian Ladies' College, Burwood. Important — please note date and place change.

## ENCORE '78

Leaders, your attention is drawn to the information concerning Encore '78 — “Matilda”, February issue. If you have not studied this yet, do so without delay and discuss it with your Brownies, Guides and Rangers so they can decide whether they wish to share in this exciting and enjoyable happening. Application forms will be found in this “Matilda”.

## UNIFORM — NEW CARDIGANS

Now available in the Guide Shop — a new-style cardigan from David Keys. Sizes 10, 12, 14, 16 and 18. Price — \$14.30. These cardigans may be worn with the blue summer frock.

## A NEW DEPOT IN BALLARAT

From March onwards — for a trial period of six months — members will be able to purchase Guide Uniforms and other equipment items from the Scout Shop at 3 Creswick Road, Ballarat. This shop is open daily from 12 noon till 5.00 p.m. and on Saturdays 9.00 a.m. to 11.30 a.m. This arrangement replaces our former Equipment Depot at Ballarat which had to close when our lease expired. We hope it will prove helpful to all members in Ballarat and neighbouring Regions.

## CAMPING DEPARTMENT

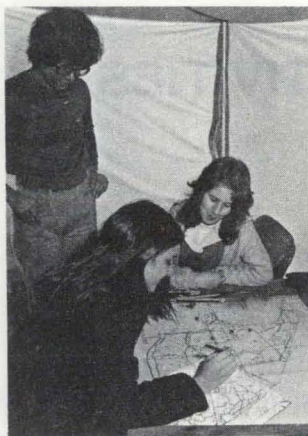
**Financial help for Campers** — Leaders, do you know of the T.C. Lothian Trust? Are you aware of the help you can obtain for girls who wish to attend camps but cannot do so for financial reasons? This Trust will subsidise camp expenses in certain circumstances. For full details and application forms write to The T.C. Lothian Trust, c/- Guide Headquarters.

## GRANTS FROM STATE YOUTH FUND

A reminder — the closing date for applications for General Grants from the State Youth Fund is 1st May. There is no closing date for Building Grants. Further information can be obtained from the Department or from the State Secretary.

## GUIDE BISCUITS

Arnott-Brockoff-Guests regretfully advise an increase in the cost price of Guide Biscuits — now \$6.96 per case of 24 packets



# COMBINED SCOUT AND GUIDE ACTIVITIES

The Guide and Scout Associations remain separate, though parallel organisations, but there are many ways in which we can collaborate for mutual benefit. Both State and National Consultative Committees have been established to facilitate such collaboration and it is hoped that this desire to work and plan together in selected ways will extend to local Guiding and Scouting.

There is no doubt that the majority of girls and boys are helped in the development of poise and personality when given the opportunity to share in appropriate activities with members of the opposite sex, and we believe that both Associations have obligations to make provision for their members to enjoy and gain the benefits to be derived in this way. The decision of the Scout Association to admit girl members into some of its sections should not affect plans. Groups or Units may wish to make for combined activities between members of both organisations.

The trend of this day and age is to involve people in their own decision making as much as possible and it is important that girls and boys are consulted in any suggested schemes to bring them together for joint activities so that all plans can be made with them and/or by them as well as for them. Certainly, programmes must not be imposed upon them by well intentioned leaders.

In addition to activities which are mainly social in character, i.e., dances, barbecues, games nights, there is room in programming for those events which are directly related to Guiding and Scouting, thus:

## Youth Training

There is considerable scope for joint training in those topics which are common to the basic programme of both Associations such as Promise and Law, camping, first aid, bushcraft, outdoor cooking, etc., and the wide range of special skills and subjects covered in any interest/proficiency badge syllabi.

## Adult Leader Training

Training at Guider/Scouter level can also be jointly run, particularly in special subjects, while Conferences and Seminars on matters of common interest can be mutually beneficial.

## Gang Shows, Theatricals, Concerts

Since the Guide Association was invited to participate on stage in the Gang Show, there has been an upsurge in the coming together for the performing arts. Folk Fests, Theatricals, Concerts, etc., provide a natural climate for girls and boys to work together through their shared interest in music and drama.

## Special Events

Special Scouting events are held from time to time — Jamborees, Hoadley Hide, Cohen Shield, etc., and Guide personnel may be asked to share in these in a special capacity where their participation would have intrinsic value. Similarly, Scout personnel may be invited to take part in some aspect of a Guide function where their participation would have special significance. Such participation should be genuinely based on the special contribution that each group can make to the host organisation and should not be merely to have members of the opposite sex present.

## Camping

Despite obvious practical problems which present themselves, combined camping has taken place successfully in a number of different parts of the State and we believe there is considerable scope for this type of activity in the future provided the camp is conducted in accordance with the requirements of both Associations.

# COMBINED SCOUT AND GUIDE ACTIVITIES

## PREPARATION OF COMBINED EVENTS

One of the first steps to be taken if combined activities are to be introduced and undertaken in a natural way is for the Guiders and Scouters to get to know one another. It is, therefore, suggested that Commissioners should make contact with their counterpart in the other Association when appropriate so that cordial relationships may be established and maintained.

When any joint activities of any kind are being arranged the approval of both Associations should be obtained. At District level this will be given by the respective District Commissioners. Where personnel from more than one District are involved, the Area, Region or Division Commissioner should be consulted as the case may be. State activities require the approval of the State Commissioner (Guides) and the Chief Commissioner (Scouts). It is desirable that approval be sought in the initial stages of planning so that there is adequate time in which to prepare. There must be reliable supervision from adult representatives of both Associations at any combined function.

## AGE COMPATABILITY

The recent re-arrangement of age groups in the Guide Association reduced to some extent the problem that arose in the past when the spread of age ranges in both Associations did not correspond. However, it must still be recognised that there are different rates of development between similar age groups of different sexes and even within the one sex there are marked differences in the rate of development of individuals. Consequently, where contacts are on an individual basis, individuals are usually able to find their own level, but where group activities are organised, some incompatibility may be experienced which may make activities less attractive for some individuals than for others. Allowances must be made for these in instigating any plans for combined activities.

At State level both Guide and Scout Associations have been working together on mutual projects for many years and we hope that, with due regard to points raised herewith, this happy state of affairs will extend to every District so that Guiding and Scouting can help to meet all the needs of its girl and boy members.

## ADULT TOUR OF THE FOUR WORLD GUIDE CENTRES

Are you thinking about an overseas holiday?  
Why not join this tour?

Open to all Local Association members, Trefoil Guild members, Parents, Guiders, Friends of the Centres.

Departs Melbourne Saturday, 26th August, 1978, and returns on Tuesday, 3rd October.

Itinerary includes visits to Our Chalet, Our Cabana, Sangam, Olave House and Foxlease Training Centre.

17-day Tour of Europe travels through Holland, Germany, Switzerland, Italy, France and Austria.

8-day stay in England includes visits to Windsor Castle, Stratford-on-Avon, Winchester, Canterbury, Stonehenge.

3 days in California allows for visits to Universal Studios, Hollywood and Disneyland.

FARE (approximately) \$2850 includes economy air fare, all coach fares and Rhine River Cruise, entrance fees on tour visits, twin-bedded rooms with bath on Continental tour, and World Centre Accommodation, dinner on the Continent and breakfast throughout, full board at World Centres.

Write for a brochure or ring Mrs Nala Jones, Public Relations Department, Guide Headquarters, 20 Russell Street, MELBOURNE, 3000. (Telephone 63 7911.)

All intending travellers are reminded of Get Together at Headquarters at 6.00 p.m. on Monday, 10th April, when light refreshments will be served.

Please advise Headquarters if you require overnight accommodation.

## THE STAFF TEAM AT HEADQUARTERS

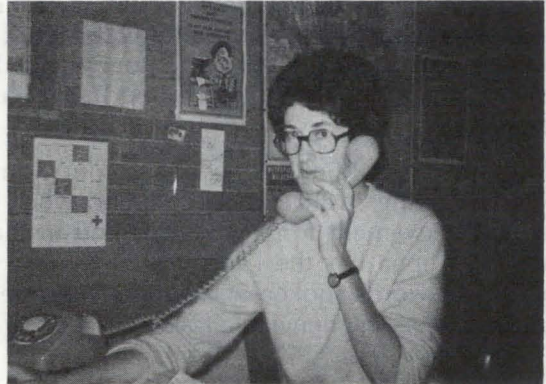
How well do you know the members of staff at Headquarters? For some about your only contact will be the Sales Assistant in the shop. Others will know the Training Secretary or the Secretary to Advisers for this is your port of call when you come to Russell Street. Country folk, your acquaintance with staff is perhaps the signature on a letter and regrettably not a face. Whatever your contact I would like to extend it by telling you a little more about the team at work daily at Guide Headquarters and what they do to help keep our Movement moving.

I will start by telling you about the office folk upstairs. Next month I will introduce our shop staff and suggest ways in which you may be able to help yourselves by helping them to do their job of supplying you with all your equipment needs.

Regrettably we have changes from time to time and many of you will notice the absence of Betty McNally (Mrs), our former Secretary to Advisers. We were all very sorry indeed when Betty tendered her resignation last year and we thank her most warmly for her long and dedicated service to the Movement.



Joyce Thompson (Mrs) has taken Betty's place returning to a job she held with us a number of years ago when the work of the Secretary to Advisers and the Camping Secretary was done by two part time people. Working four days a week Joyce is assisted by a junior stenographer, Kathryn Gardiner.



In the Training office you will find Sandra Barry hard at work — sometimes on her own, sometimes surrounded by our three full time trainers, Norma Sims, Joan Moors (Mrs) and Hazel Riordan (Mrs), who need no introduction as they are well known throughout the State. As well as fulfilling her camp training commitments, Hazel now looks after camp site bookings.



Always ready to take your money or help you with an accounts problem is the Accounts team, headed by Maureen Setterfield. Assisting Maureen are Peg Cust (Mrs) and Jan Rolinski (Mrs). Peg is one of our very valuable part timers and is with us each morning. Maureen will be tripping up the aisle in April, then going overseas with her newly acquired husband, but she will be back at her desk in July, we hope.

In the next office to the Accounts Department you will find "P.R.". Nala Jones (Mrs) is on hand from 10 till 3 three days each week to carry through the work of the Public Relations Department and help members with their display needs, photographs, speakers, etc. Perhaps that is where you come to pay your Calendar money?

When she is not in the field recruiting leaders, helping new members or furthering the work of the Movement in other ways, Judy Rogers, our Recruitment Officer, will be found in the Public Relations office.

Hidden away is Minna Jones (Mrs), our Minute Secretary, another valuable part timer who has served the Movement for many years and in many capacities. Minna has the headache of turning the thousands of words spoken at meetings into meaningful records — an unenviable task.



Tea-break and time to relax.

In the General Office it is usually a feast or a famine, depending on whether those staff members who work only part time are in or out, but there is always someone not far away to answer a question or give you the help you seek.

Jean Mackechnie (Mrs) works one or two days a week on our records, particularly Warrants and Long Service Awards. Jocelyn Ray attends to everything that has to be done to get "Matilda" posted to you — preparing the wrappers, processing new subscriptions, address changes, etc. Her time varies according to work volume, as does Jean's.

Zilpha Barker, our English lass from Commonwealth Headquarters, left us to return to the U.K. in December and her place has been taken by Daphne Pearson (Mrs), who will be working four days a week. Another new face is that of Joanne Elliott, a junior stenographer who left school last year. May Vernon (Mrs) helps Miss Carter, who now works as a volunteer, with her Property work and she is usually on hand two or three days a week.



Heather Cathcart, Assistant State Secretary.

In and out of the General Office with a variety of duties to fulfil are Heather Cathcart, Assistant State Secretary, and me. We are the ones to turn to if you do not know to whom to submit your queries.

To complete this brief Who's Who of office staff personnel I must mention Maree Wason, our telephonist/receptionist, who always has a welcome smile for callers or a friendly helpful word on the phone.

"Almost staff" are two regular volunteers — Gwen Thurgood, who has been part of Headquarters since 1939, and Mabel Millen (Mrs), a former Commissioner. We greatly appreciate the help these two people give us.

All of these people give of their best cheerfully and conscientiously. They want to help you and through you the Movement and the girls it serves.

PEG BARR.

## DRUG SEMINAR

An all-day Seminar will take place on Saturday, 29th April, at the Sheraton Hotel.

This Seminar is being arranged for the Guide and Scout Associations by the Victorian Foundation on Alcoholism and Drug Dependence.

The programme is designed to help leaders to a greater understanding of the problems associated with the use and abuse of drugs in today's society.

For further details see April issue of "Matilda".





The day you make your Promise is always "special". These 1st Nunawading South Brownies shared with several others, who had also come many miles from the countries of their birth to live in Australia, and Australian Brownies in a very special Promise ceremony.

### BROWNIE REVELS

Brownie Revels was held at Donald Guide Hall.

Brownies taking part came from Birchip, Donald, Charlton, Watchem and St. Arnaud.

When we were put into groups and given a leader we played a "Brownies are wide awake" game. The walk took over an hour and we had to collect things on our way.

When we arrived back we were provided with meals by the Donald Brownies.

Then we went to the park for more games.

—TRACEY OLIVE,  
ANDREA HINKS  
(1st Charlton Brownie Pack).

### PHILLIP ISLAND FARM HOLIDAYS

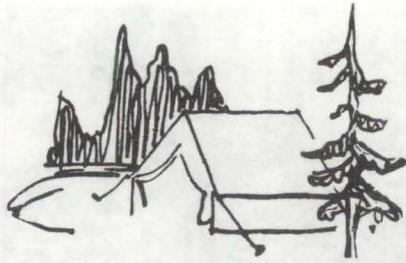
Spacious attractive surrounds, beachfront, horse-riding, hay-rides, animals, etc. 4 new log cabins. Recreation hall. Families, schools and groups. Telephone Mrs Jeffrey on (059) 56 7288.

### STOPS AND STARTS

We spent our last night at Brownies on a mystery hike. We started outside Ekala's home and walked to a nature reserve. Then we plodded along to ex-Kimba's home and had a delicious first course of our tea in the garden. We then raced to another home for our dessert. There we hunted in the garden for our first-aid badges and had our Brownie Ring when we said our goodbyes. As we were leaving, Baringa told us that she wanted to cry.

After about quarter hour at home we went to Guides for a campfire. At Guides we sat in a ring around the campfire and sang songs, but we only knew a few. We thoroughly enjoyed our Brownie life and give many thanks to the guiders who helped us along our way, and are looking forward to our Guiding future.

—SUSAN LANGFORD,  
FELICITY ENNIS  
(1st Waverley North Brownie Pack).



## PACK HOLIDAY

1st Deer Park Brownies went on a Pack Holiday to Guide House, Britannia Park.

This one was very special for it was to be my last one in Australia and it turned out to be rather special, too.

On our very first day we were visited by a baby joey.

One thoughtful act by the Brownies was making a birthday cake for Mr Fraser, the warden, with one candle depicting their little guiding light. I am sure he enjoyed his 'birthday afternoon tea' as much as the girls in spite of the cake being not light enough to fly.

The Brownies' good turn was polishing the Guide badges at the gateway into Britannia Park and the name plate on the toadstool at Brownie Cottage.

Sunday was special, too, as the entire service in the church was conducted by the Brownies and the wonderful spiritual atmosphere in this natural cathedral will be hard to forget.

Thanks go to the Rangers from 'Thank You Chalet' who gave us a display of Scottish dancing, taught the Brownies a dance and took them swimming.

The Brownies were invited to inspect a Guide camp in full swing — a foretaste of what is ahead of them as they go on from Brownies.

Laughter and fun were ever present.

How I am going to miss the Deer Park Brownies!

—M.T.

## ST. JOHN AMBULANCE ASSOCIATION

### An Appeal for Funds

As so many members of our Movement have shared in courses run by the St. John Ambulance Association or have enjoyed the security of having volunteer First Aid Officers in attendance at Guide Gatherings, we bring to your attention the fact that the Association is having its first ever appeal to the public for funds.

Any members wishing to support the valuable work done by St. John's should send their contributions to—

St. John Ambulance Appeal,  
55-57 William Street,  
Melbourne, 3000.

# HOLIDAY FUN

## SUMMER TRAINING WEEK — 1978

The week began with people getting to know each other by working in several duty groups; strangely enough, trainers were not assigned to these hard-working groups.

After initial sleeping arrangements were made, the campers began setting up their place of residence for five days. With Hazel as their leader, all that was done, was carried out because Hazel said (as a result Hazel's title became "Hazel Said"). Hazel Said had the girls making elaborate clothes lines, plate racks, chairs (for the "more mature" trainee and "Hazel Said") and a commando course (hugging trees is not exactly my best past-time).

Many a night we enjoyed the humour of our trainers. We listened to Miss Bunning tell the story of Matilda and the burning house, Jean with the song "Alice, the Camel had Seven Humps" (this song results in many bruises), and Q.M. with kitchen tales.

Incidentally, during the course of the week we had the most delightful meals.

Campfires were extraordinary. Because Hazel Said, Joan was brought to campfire in a bath tub supported by two poles and netting, which four campers carried singing, "Swing low, sweet chariot, coming to carry Joan home".

Special subjects were the order of the week. They ranged from making marzipan fruit to pottery, spinning, enamelling, and making koalas, butterflies, etc., from shells. One of the guiders was challenged to dress herself in natural resources. This she did, with a grass and bark skirt and matching accessories (gum boots and camp hat).

What a week! The most difficult thing to do was to say goodbye to the wonderful friends I had made. I hope that a few more guiders join me next training week to complete another stage. It most certainly is a week that will be remembered. The friendship, peace and serenity of the surroundings is a great experience to share.

—SONJA MIDDERHAM.





Karobran, which means "coming together", was our first State Ranger camp since the age-division in 1976. It was held at "Trawalla" campsite at Moggs Creek.

On Friday, the day of camp construction, the clatter, bang of mallets echoed around the campsite as Rangers arrived from far and near.

After a slow start on Saturday morning and the arrival of the Rovers, camp activities began. First was a commando course — stretched arms and aching muscles proved Rangers have a long way to go before reaching the standard of jungle agility of "Tarzan and Jane".

Rover Rex tried in vain to instil the basics of motor mechanics into our "un-mechanically"-minded Rangers, while Dean struggled valiantly with bent nails and crushed fingers to help us produce magnificent wooden pot-plant holders.

Saturday afternoon was spent in animated discussion at the mini-conference.

After an early start on Sunday attending Guides' Own, conducted by Camberwell Rangers, the whole camp set off to visit the Rover Surf Moot at Anglesea.

Orienteering was a great challenge and although we missed some check points and could not run the distance, Rangers were not last by any means.

The more stout hearted Rangers entered the Iron Person competition — which involved eating licorice while blindfolded, running, bent double holding your toes, scrambling under a cargo net, running up a slippery dip and throwing flour bombs. Rovers were victorious in this event, although Robyn, a Donessen Ranger, starred, gaining fame for the most spectacular feat (she also had a very sore back next day).

Beach sports in a howling gale are not everyone's idea of fun but, to the brave, being dumped in the sea is a memorable happening.

After barbecue tea, square dancing in the rain was a new experience for most.

On Monday the great Ranger team spirit was evident as all pulled their weight in striking a very wet camp.

It was a fabulous camp and all enjoyed the rewarding friendship and fun of Guiding and Scouting.

—HEATHER MCKENZIE  
(Ann Rylah Rangers).

## RANGER HOLIDAY AT BRITANNIA PARK

Shepparton Ranger Guides took a well earned holiday at the "Thank You Chalet" after a hard year of study and work, suitably chaperoned by their leader 'Skrap' and their District Commissioner, 'Mother Bear'.

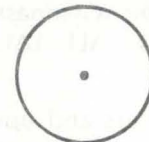
Lights were not out at 9.30 p.m. nor did the cooks rise at 6.30 a.m., but nevertheless many varied activities were enjoyed.

Camp fire and a game of cricket with the boys of the St. John's Brigade, a raft was built and managed to stay afloat; an excursion on Puffing Billy; a walk to Warburton (bus back); the usual hike to the Falls (unfortunately no bus back); a trip to Healesville Sanctuary, wombats unco-operative, so back at the Park kept vigil to observe them on the site; a concert with Brownies on Pack Holiday — they loved us all with hugs and kisses and custard faces; a Birthday party for Mr. Fraser, followed by Scottish Country Dancing and Mrs Fraser joined the frivolity.

We were fortunate on our last night to enjoy camp fire singing with Peg Barr and the Strolling Players.

We had a memorable time and our thanks go to the Guide Association for maintaining such a wonderful property.

—J. BONNETT ('Skrap').



## TERESA M. HUNTER

All who knew her will remember with love, respect and gratitude, Miss Hunter, who died recently.

Her whole life was one of unstinting service to the young.

At first she worked with the YWCA in Victoria and Queensland, then in schools in Bendigo, Adelaide and Launceston, and after that with Brownies at Wonga Park, where she was Guider for many years.

Her devotion, care, well-run weekly meetings and pack holidays combined fun with education.

Lately, as her mobility decreased, she continued to support children through World Vision Child Care.

—G.D.

# SUPPLEMENTARY



# ACTIVITIES

## SAC ON THE BEAT

A meeting for all Supplementary Activities Region Representatives will be held at Headquarters on Saturday, 22nd April, at 10.00 a.m. This purposely coincides with the International Workshop so country people will have someone with whom to travel to and from Melbourne.

## "MOVING ON"

We all "GOT MOVING" some time ago, and SAC now invites you to "MOVE ON", into our Sports Camp in May 1978.

This is the opportunity to 'have a go' at a Sport you have always wanted to do, but never had the opportunity. Well here it is.

Archery, Fencing, Judo, Cricket, Netball, Football, Athletics (Field Events only), Tennis, Table Tennis, Golf, Billiards, Gymnastics (Apparatus and Floor work), Olympic Gymnastics, and a host of crazy Indoor Games. ALL TAUGHT BY OUTSIDE EXPERTS.

ANY GUIDE 12 years and upwards and RANGER GUIDES in the State of Victoria may apply, but numbers are limited to 60 only.

The camp will be held at Melbourne Church of England Girls' Grammar School, 86 Anderson Street, South Yarra (we will be living in the boarding school), from 10.30 a.m. on 21st May to 4.00 p.m. on 25th May.

Fee — \$47.00.

Closing date for applications is 25th April, 1978.

APPLY NOW AND BE SURE OF A PLACE!



## PEARLS OF WISDOM

(a) For those interested in ROLLER SKATING — contact Mrs J. McMillan, 63 Keon Parade, Keon Park, 3073.

(b) How about CANOEING! Instruction for all age groups from Brownies to adult leaders of all sections — contact Miss Jane Farrance, Suite 4, 140 Cotham Road, Kew, 3101. Telephone 80 5934.

Jane Farrance is the Director of the Victorian Board of Canoe Education and will welcome inquiries.

## "MOVING ON"

### APPLICATION FORM

NAME.....

AGE.....

ADDRESS.....

TELEPHONE NUMBER.....

UNIT.....

SPORTS WHICH INTEREST YOU.....

.....

.....

SPORTS YOU PLAY.....

.....

.....

STANDARD ACHIEVED, e.g., School team, Club

Sport, State team.....

.....

.....

### PARENT PERMISSION:

I am willing for my daughter.....  
to attend the MOVING ON Sports Camp and en-  
close a deposit fee of \$15.00.

SIGNED.....

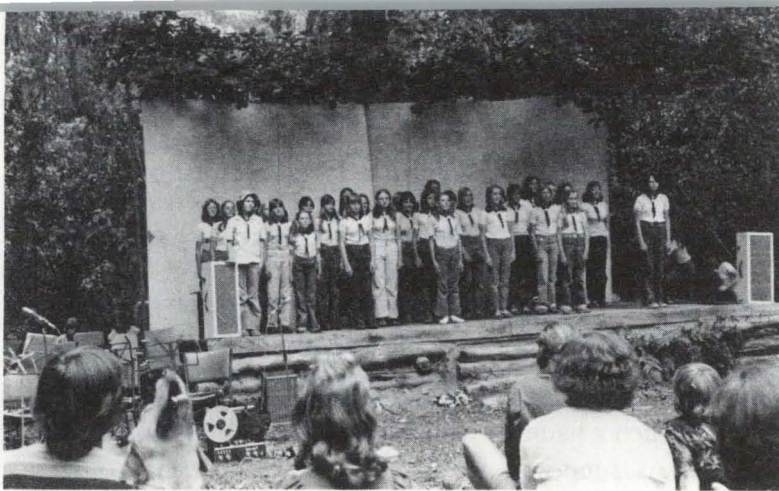
Parent/Guardian

Please mail application form with deposit fee to  
Mrs M. McLean, 2 Wyatt Street, Seaford, 3198 no  
later than 25th April.

# SAC GOES CULTURAL

## at the

### STROLLING PLAYERS CAMP



Much excitement on the footpath outside Guide Headquarters at 8.15 a.m. that Saturday morning in January when 40 Guides from all over the State were gathering to leave, by bus, for Britannia Park and the Strolling Players Camp.

SAC was there too! As the only gum leaf player he was truly looking forward to this experience and his moments of glory to come.

Time to go! "Goodbye Mum", "Goodbye Dad". "See you next Saturday". "Don't forget to write". Everyone scrambled aboard the bus and they were off.

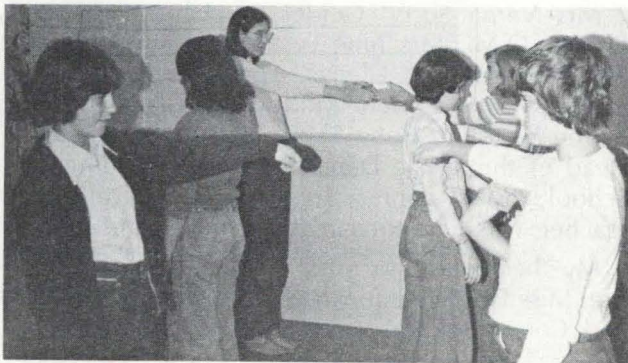
While travelling they played an interview game based on "This is your life" and soon everyone had a jester-shaped name tag in her patrol colour with drawings all over it. Except SAC! He had nothing to tell about himself as he has only just been born. (See January-February "Matilda".)

Amid much chatter and laughter they arrived at Britannia Park, good friends already.

After settling-in, the real work started. Singing, Instrumental work, Dance and Drama. — "This could be quite a camp," thought SAC.

Hot though it was the Campfire led by Miss Peg Barr on Saturday night was a lot of fun and everyone trooped off to bed, tired but happy.

Sunday morning! What a shock! Their first performance was to be in Warburton on Thursday afternoon. The show would have to come out of four days' work. Oh! Boy! and work they did! From Colours and Prayers in the morning, through sessions and orderly work to dinner at night. "Phew." SAC knew his gum leaf could not take the pace, so he decided to visit each session to see others at work.



The Drama group in Brownie Cottage was fascinating to watch. Sessions on the skill and technique of drama involved the art of relaxation, concentration, body awareness, trust in others and empathy with others. The creative sessions brought forth some hilarity and became the nucleus of the show. Through it all Robert's skill and talent was the inspiration.



The Dance group had varying backgrounds in dance from tap through to classical. Each girl shared her knowledge with the others and together they worked out routines and steps. Gently guiding them was Jenny, imparting, through all she did, the attitudes and skills necessary for a good dancer.



The Instrumentalists had a ball. Each learnt more about her own instrument, some learnt new instruments and everyone learnt the discipline necessary for playing with others in a group. Carol was superb. Her professional approach inspired the kids to great heights, and a reasonable sound was produced from the wierdest collection of instruments. No mean feat! SAC was most impressed. "This camp is really something," he said. He went

off to find more gum leaves, determined to be part of the show.

"It is not all hard work though," he thought. "The evening activities have been relaxing and tremendous fun.

The T.V. night was hilarious and the Shipboard Concert bordered on the hysterical.

The best night was the Maori concert given by Kiwi (Miss Flo. Bailey) and her district camp. We learnt a lot and made many new friends. They were so good, they really should be in show business."

This reminded him that he must find four gum leaves for the four Strolling Players shows.



However, he was not destined to take part in any performances. All the sessions, orderly work and constant running back and forth to Brownie Cottage reduced him to a shadow of his former self. Not a puff could he raise for playing his beloved gum leaf. He was plum tuckered out.

Finally, a show, one hour long was created by the youngsters. SAC was privileged to be in the audience. How well they performed — even in very trying circumstances. "These kids are tremendous," he said.



As Taps was played that night on the trumpet from the Cottage and answered by the flute from the House, he felt a lump rise in his throat. "In the stillness of the night, in this setting, it is a beautiful way to play this haunting melody. We must share it with others."

The final day dawned and the last performance was given. At the end of the show Taps was played, as it had been every night in camp.

SAC shed a little tear and noticed everyone else did too.

"It is difficult to put into words what was achieved during the week," he thought. "Nobody wants to go home, we have made so many friends and had such a happy time."

This was supposed to be a Music, Dance and Drama camp, yet somehow the spirit of Guiding was everywhere, even in the air we breathed.

How fabulous it was to have so many visitors — State Commissioner, Mrs Grimwade; Assistant State Commissioner, Mrs Oldfield; the committee of Encore '78; four trainers from interstate; the International Adviser; Executive members and Guiders. It made everyone realise that Guiding does not only take place in your own Guide Hall.

"What a rare privilege and rewarding experience this has been for us all," SAC thought as he carefully packed away his gum leaves. "Can't let all this culture go to waste, must practise for Encore '78. Gum leaf blowing is still a drawcard, even though I flopped here."

However, in case he flops again, he is going into training. With eight legs maybe he will become a champion runner! He will be at the "Moving On" Sports camp in May to find that out for himself.



My grateful thanks to the following staff of the Strolling Players camp for a job superbly done —

Mrs Verna Surry, Guider in charge; Mrs Betty Davies, Q.M.; Mrs June Lyons, Assistant Q.M. and 1st Aider; Jenny, Glenys, Linley and Gail, "The Slushies"; Mr Robert Motton, Assistant Producer of the Victorian Gang Show; Mrs Dorothy Carroll, Head of the Music Department, Nunawading High School; Miss Jenny Ferguson, Classical Ballet teacher; Mrs Joan Richardson, Production Secretary.

My thanks also to Miss Peg Barr for her Campfire, Miss Flo Bailey for the Maori evening, Britannia Park Committee and Mr and Mrs Fraser.

—MARG. McLEAN.



# BRITANNIA PARK

With our convener, Yoland, on her way to California, here I am once more with a chance to talk to all the many friends of Britannia Park. Six years have passed since I wrote for 'Matilda' and I find myself very rusty.

I am thrilled and grateful that so many of you continue to support the Maintenance fund, a fund which I started in 1963 to give all of us an opportunity to help maintain the campsite as a truly beautiful property, your property.

You will be interested to know that the Guides of Nauru (that little Pacific island) have been supporting the fund every year since 1966. Very few of them have been to Britannia Park, but they do this because they belong to this wonderful sisterhood of Guiding.

In January, the Thursday Specials — a band of ladies who every Thursday for the last 14 years have so faithfully tended the gardens at Britannia Park — were invited to attend the performance given by the music camp, Strolling Players. So, of course, it was "down tools", put away hoses and off to the Senior Citizens hall at Warburton. The show was very good, the Players had worked very hard in the four days since they first met and we not-so-young Guides were very proud to see some of our young members giving so much pleasure to other people.

I hope very much to see some of my Local Association friends at Britannia Park this year. Do you remember how you used to have a meeting *and* do some jobs for us? No one cleans windows as well as Local Associations do, unless it is Trefoils, of course. Any day but Monday is a good day. It will be lovely to see you.

## MAINTENANCE FUND

1977

OCTOBER—

- 2: South Morang Local Association
- 31: South Morang Local Association

MARCH, 1978

NOVEMBER—

- 6: Arira Post Trefoil Guild
- 8: Marysville Local Association
- 8: Mrs P. Gray
- 26: 2nd Carnegie Pack

DECEMBER—

- 1: 1st Merrigum Guide Company  
Doncaster Local Association
- 3: Miss Daisy Thorrowgood
- 4: Donvale Local Association
- 6: Montrose Local Association
- 8: Eltham Local Association
- 9: 3rd Brighton Company
- 10: Collingwood Local Association
- 11: Farrow family  
Yarragon Local Association
- 13: Narre Warren North Local Association
- 14: Preston Division  
Nunawading-Tunstall Local Association
- 16: Kingfisher Patrol-1st Eltham Company
- 17: Benalla Local Association
- 24: Whittlesea Local Association
- 25: 1st Kerrimuir Brownie Pack  
1st Mooroolbark Company
- 28: Altona Local Association

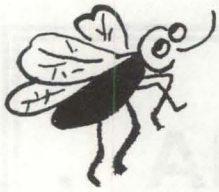
1978

JANUARY—

- 1: 1st Brighton Beach Pack
- 2: Templestowe District
- 3: Burwood Local Association
- 5: Macedon Division
- 6: Macedon Division
- 7: Brownies of Oakleigh Division
- 8: Brownies of Oakleigh Division
- 21: Wangaratta Local Association
- 31: Nauru Girl Guides Association

A very warm thank you for supporting the fund.

—PAT GRAY  
(Acting Convener).



# CONSERVATION BALANCE

For twenty years I had watched that tree bloom and grow. Twenty long glorious years of sunrise and sunset through its leafy fingers, and twenty years of bird families seeking its shelter for their nests.

Today blue sky stands starkly behind the bare trunk. The birds have gone, the whispering leaves lie dead at its foot. It was the only tree used by the kookaburra in our area. Possums played in the boughs on moonlit nights and owls hooted mournfully. Conservationists would cry at the sight today.

But the attack of the chain saw on the once proud tree was, in fact, a very necessary part of conservation.

The big gum tree was about sixty years old and one of the biggest in the town. It was also sick . . . just as people sometimes get sick in old age.

Over recent weeks we have listened with fear to the crackling of breaking limbs at night. We thought it was the cypress trees at the reserve nearby, but inspection revealed nothing.

Now we realise it was the glorious old gum tree in a neighbour's garden.

Gums are notorious for dropping limbs . . . which is why we never camp under them. Although the tree looks bare and dead, it lives on. Its life blood still runs within the sturdy trunk and when spring comes new growth will appear. It will take years to reach its former size and beauty, but time and Nature are great healers.

Some conservationists would object to the tree being lopped . . . and perhaps even actively try to prevent it.

But conservation must be a balanced thing. Too many people take a one-sided stand on conservation issues and do not "weigh up" the projects involved.

A badly scarred quarry site was replanted with pine trees. Some conservationists were horrified and insisted that native trees should have been planted.

What they had not thought about was that native trees would not survive on the exposed site without shelter from the hardier pines. They had not "weighed up" the issue and worked out the practical from the idealistic.

I had a practical lesson on conservation recently — right here in my kitchen.

A mantis had caught itself in a spider web on the porch and I released him and brought him inside. I caught a fly which he grabbed and chomped greedily. Then he collapsed before my eyes!

He was not dead — but paralysed, and it was obvious that he had been poisoned. Although it was days since I had sprayed, the kitchen was polluted with flyspray; the fly — though alive, was also polluted and the mantis, by eating the fly, became victim of the pollution.

He recovered out in the air, but it was an interesting practical lesson about Man's affect on the environment.

Of course, really I should not have taken the mantis from the spider web . . . that deprived the spider of his dinner, but sometimes conservation slips my mind in these matters!

—ANNE L. FRASER.

## THANK YOU

I would like to say a big thank you for the help I have received from four very special girls, Alison West, Jenny Beach, Julie Slaughter, Sue Bergman and from their families.

I have a little girl, Karen, who is a Brownie in 4th Noble Park Pack. She suffered brain damage in August 1975, and she has been left partially paralysed down the left side.

When Karen came home from hospital she could hardly walk and had no use of her left arm and hand. My husband, son and I have been trying to give all the therapy necessary to help her to recover. I was talking to Sally Slaughter (Brownie Leader) and she suggested that the Guides could help us, which was just great as Karen gets tired of Mum trying to help her to use her hand. She also gets very cantankerous and argumentative.

The girls come twice a week and I tell them what I would like them to do with Karen. She can now catch a ball and skip because of the work the girls have done. They read stories, play games, help with her reading and spoil her. It gives me a break as Karen is on two drugs, one to control major epileptic fits and one to control minor fits. It can really get me down, but four happy faces, two great Brownie Leaders and other Guiding friends help to keep me going. The girls are part of the family now.

L. CHEESEMAN,  
Noble Park.

(From a letter to the Commissioner, Local Association, president, leaders, Rangers, Guides and parents in Noble Park District.)





---

# TRAINING PAGES

---

## *Training your girls as Leaders*

### TRAINING THE SIXERS

The main leadership role of the Sixer, and the Second Sixer, is that of example. It is important that the girl chosen by the Guiders is respected by the Brownies for her attitude toward her Promise and Law. Training really begins at the recruit level but, of course, much depends on the response and sincerity of the Brownie. Your example, encouragement and trust are the first steps in her training.

In many Packs there is a trial period after appointment and before Stripes are presented. The period may be set in Pow Wow. This will enable you to see her response and give you an idea of where she needs help. Make clear what is expected, perhaps everyone can write three things they expect a Sixer and a Second to be or to do.

When you ask her to organise her Six for a game be ready to give hints on how to do so. If her peers are not very co-operative be ready to give support. She may be bossing them, show her how to gain co-operation. Be sure that no task is really beyond her capabilities. Occasionally the appointment might cause some 'showing off', try to channel the extra energy into constructive action. When the guiders want something done, *do* ask a Sixer to do it. Brownies too will often choose these girls for special tasks.

Occasionally a Six may not have a girl quite ready for the role, allow each member to take it in turns to be an acting Sixer, this gives you opportunity to give each a little training and prepare someone for appointment.

Before you appoint another Sixer have a good look in your Leaders Workbook, you will find a great deal there to help you.



### TRAINING YOUR PATROL LEADER

#### "An Ongoing Experience"

Heather, the Patrol Leader, was a little wide eyed and breathless, "Kim, Angela is outside with a couple of boys". The Guider, Kim, thought for a second. "Would you tell her, please, that I want to see her about her camp form?" After Angela had seen the Guider (who made no mention of boys outside), Heather and her Second came up again and said, "We are worried about Angela, she is only eleven. Do you think we should see what happens after the meeting, if the boys are still around?" "I think they might be her brothers," the Guider replied. "Her parents know that someone must meet her after the meeting, but perhaps you could see which way she goes; you know I am sure we can trust Angela, but you are obviously concerned so you do what you think best."

A few minutes after the close of the meeting, Heather and Sally returned. "It's all right, Kim. They probably are her brothers, they all went to Angela's place."

# TRAINING YOUR GIRLS AS LEADERS

We will not go in to the soundness of that statement, but re-read the story again; Patrol Leader Training *IN ACTION* ???

How did the Guider help the Patrol Leader do her job?

Did she take over?

Did she imply that the Patrol Leader was jumping to conclusions?

Did she help the Patrol Leader look more closely into the situation before making decisions and taking action?

Did she help the Patrol Leader in her relationship with a member of her patrol?

Would the members of Heather's patrol benefit from the way the matter was handled?

A Patrol Leader needs help in learning skills and gaining knowledge to pass on to her patrol and to help her programme for patrol time; to most people this need is obvious and most of us either pass on the skills and knowledge we have or find a resourceful person to do it for us.

But a Patrol Leader is not a leader in a field of skill or knowledge, but a leader of girls. This is not an easy role, as we well know! But she has an advantage or two over us: she is chosen by the girls to be their leader, and there is no generation gap. A disadvantage is the lack of experience in coping with situations that arise when working and playing with individuals and with groups (of individuals) and that is where we come in. Our experience is to be shared with discrimination and great wisdom. Every meeting we have is an opportunity for training the leaders. Pause a moment . . . how much does your example of leadership influence their behaviour as leaders? Think back to the last company meeting: how would you rate yourself? Give yourself a 1 to 5 score for —

- enthusiasm . . . . .
- sense of humour . . . . .
- patience . . . . .
- tact . . . . .
- courtesy . . . . .
- adaptability . . . . .
- awareness of people . . . . .
- awareness of situations between people . . . . .

Add some of the qualities you think I have left out, total your score and see if you are satisfied

that your Patrol Leaders are given a good guide to follow.

Think again of the last company meeting. . . . Did the patrols make good use of patrol time? If not, why not? Had it anything to do with individual differences, likes, dislikes? Have you made it clear to the Patrol Leader that she can come to you for advice (even if she does not follow it)?

Try this . . .

- Ask your Patrol Leaders to list what they think the girls of their patrol expect from them.
- Ask the Patrols to list what they expect from their Leaders.
- Ask the Leaders to list what they expect from you.
- Tell the Leaders what you expect from them.

Compare all the ideas with those in the handbook. While experience will help the Patrol Leader grow in understanding of the role of Leader, there is some basic knowledge that is easily available to her, and she should make use of it.

\* \* \*

Opportunity to gain experience is essential, and it is back to us again.

B.P. said to the Patrol Leaders, "I want you to train your patrols entirely by yourselves."

Do your Patrol Leaders know this? Do they know what is expected of them?

Be clear and consistent; saying one thing and doing another will confuse them.

Have you ever explained to the parents of a Patrol Leader what it means to hold this position?

Be prepared to give loads of encouragement and show courage by letting them have a go.

\* \* \*



# TRAINING YOUR GIRLS AS LEADERS



If your Patrol Leaders have difficulty expressing their views or giving constructive suggestions to Patrol Leader Council, do you include activities in the company meetings to help them? Do you include things to stimulate the imagination, to help them think clearly? Do they find it easy to mix with other people and make conversation? Do they need opportunity to meet other people? When was the last time a Patrol Leader was responsible for:

- taking a game
- taking a meeting
- teaching a song
- choosing and leading prayers
- welcoming visitors
- letting her second and patrol know she is going to be absent
- programming for a camp fire.

How did she cope? Were you available, but not obtrusive, to give advice?

Are there any activities that could be included in the meeting programmes that might help her next time she takes such responsibility?

B.P. said to the adult leaders: “. . . if you only give partial responsibility you will only get partial results”. So, **TAKE THE TIME, THOUGHT, PATIENCE AND COURAGE TO ALLOW YOUR LEADERS TO LEAD.**

## TRAINING THE YOUNG PATROL LEADER

Many Guiders must have found themselves, as we did in our unit, suddenly without those somewhat responsible, 14 and 15 year old guides, our Patrol Leaders and seconds. We had fewer girls and they seemed so young to take over the responsibilities expected of them. Before the Brownies came on we knew we had to do some quick “help the Young Patrol Leader” training. In preparation for elections we gave the guides, individually, the chance to take responsibility for themselves and for others in separate activities, and gave everyone opportunity to think about the duties of the Patrol Leader and Second. These were listed and discussed by everyone, as were the duties of the Guiders and patrol members. This meant everyone knew what was expected of her whatever position she later held, and we had a common basis from which to work.

After elections individual training was given to each Patrol Leader at a time separate from the unit meeting — helping her to find the interests and capabilities of *her* patrol members and arranging her programme around these. In the company programme guiders gave emphasis to activities which helped weld the patrols together. A feeling of loyalty to the patrol was encouraged.

At first, on the request of the Patrol Leaders, Guiders sat on the sidelines during patrol time, but there has been a steady decline in the need to do this and now we go only when invited.

The next set training was given to each Patrol Leader with her Second. A planned patrol time suited to the patrol's interests was necessary and we now find that it is as well to follow this routine helping the Patrol Leaders at least every four weeks to have organised patrol time adequately prepared. The importance of having programmed patrol time written in a book helped greatly when assessing Progress at Patrol Leader Council. During the year we have increased our numbers from seven to twenty-two and this has meant a great deal of emphasis on “getting to know you” and the Guide Law and Promise.

### 1977 TRAINING PAGES

Copies available from Training Department—  
**30 cents a set**

If ordering by mail — please add 30 cents postage.

# TRAINING YOUR GIRLS AS LEADERS

At the beginning of third term a camp for Patrol Leaders and Seconds gave great impetus to the adult leaders as well as the girls. During camp we looked at what makes a Patrol Leader and the patrol work well together. The guides drew up the following list.

- \* go to each meeting well prepared
- \* always have an emergency activity ready
- \* gain respect through self-control and example
- \* be interested in patrol members and know their interests
- \* be ready with new ideas and activities
- \* learn about others and help them to be friendly
- \* have a book of patrol ideas
- \* have proper equipment ready
- \* plan together so everyone has a chance to participate
- \* LOOK IN YOUR HANDBOOK FOR INSPIRATION.

## Activities for welding the patrol together

1. Give each patrol a collection of oddments from which to make their emblem, e.g., dressing up, collage.
2. Make a Patrol envelope for the noticeboard for messages.
3. Have a "Talk Back" on suitable topics.
4. "Getting to know you" quiz.
5. Collect natural objects to spell Patrol name.
6. Assemble and stock a Patrol box.
7. Delegate Patrol jobs.
8. "Oiling the Works" discussion Page 204 old Handbook.

HELP THE PATROL LEADER GAIN LEADERSHIP WITHIN THE PATROL by:

- Using patrol competitions, e.g., first to have all patrol sitting cross legged; alternate girls kneeling and standing; all off the floor; all balancing on one leg; and so on. By giving instruction only to the Patrol Leader you ensure she gives the orders to her guides.
- Teaching a skill to the Patrol Leader and giving her time to demonstrate and teach the patrol, e.g., large arm sling. Using the handbooks as much as possible shows the guides where to go for new ideas.

## Communication in the young unit

One of the important things about getting through to young people is that they understand what you expect of them, and you understand what they are able to do. If they do not hear what you say they cannot act as you wish; if they do not understand your words they cannot do as you ask — So keep your language simple and clear.

The hand and whistle signals in the Australian Guide Handbook should be learnt by every recruit so that she feels at home when they are used in unit meetings. They must be obeyed by everyone. When you ask for silence, wait for it before giving instructions for games and activities.

N.B. Company rules such as no jumping from the stage, and no chasing on the stairs should be carefully and firmly adhered to. Use example and self-control rather than the negative "Don't do that!" approach. If you are new to taking games, or taking a new game, try playing them through with a helper — order of explanation and the rules for playing. If necessary read from these notes until you become familiar with the process, you will find success comes with practice.

If your programmes are interesting and planned around what the guides like, you will find the guides respond well to your leadership.



## CONGRATULATIONS

To Mrs Betty De Marchi and Miss Margaret Tharle on being awarded their Training Diplomas, to Mrs Shirley Prince on gaining her Camping Training Certificate and Mrs Margaret Ball on becoming a Brownie Training Team Member (Maroon-dah Region).

# LOCAL



# ASSOCIATION SECTION

## Thought for the Month

'The greatest service one can render to children is to give them the habit of a rule before they have had the idea of choosing one, or have become foolish enough to hate all rules.'

—ANDRE MAUROIS  
(from 'The Victorian Scout'.)

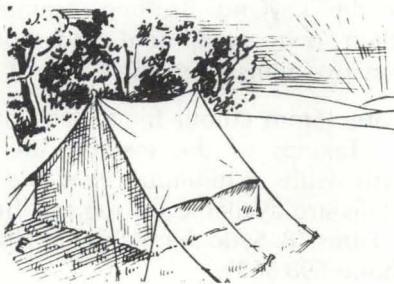
## Introducing

Mrs Cath. Pye. It gives me much pleasure to introduce and welcome Mrs Pye as the new co-ordinator of this Local Association Section in "Matilda". She will be working in close liaison with your Adviser, which means that you will continue to hear any news from Guide Headquarters pertaining to Local Associations, as you have in the past.

Mrs Pye has been a Local Association member in Malvern District for ten years, since her two daughters were young Brownies. Now they are both in the Ranger Section and Mrs Pye has maintained her constant interest in the Local Association in that time. One of her regular tasks is to help compile the District Newsletter, so I know she is going to give you plenty of interesting reading in future. She was one of the hard-working Committee members organising the Local Association Conference at Broadmeadows last year.

I would like to take this opportunity to thank all those Local Associations who, at some time over the past five years, have contributed quotations for my monthly thought, tasty recipes and articles on Local Association activities. I could not have managed without your help and co-operation. I sincerely hope you will continue to do the same for Mrs Pye, as she will be depending on this help too. Her name and address appears at the foot of this page.

—JEAN OLDFIELD.



## Art Show at Portland

Portland Local Association held a tremendously successful first-ever Art Show in the well-appointed local art gallery throughout one weekend. Invitations to local artists to submit paintings and an advertisement in the newspaper resulted in over 220 entries. Businessmen and other interested people were invited to attend the Grand Opening and then the Art Show was open to all on the Saturday and Sunday — and the people just did not stop coming!

Paintings worth \$3000 were sold during the weekend, from which 15% commission was kept by the Local Association. Artists were charged an entry fee of 50 cents per painting, and printed catalogues were sold for 50 cents as an admission charge.

Portland Local Association members are usually noted more for being jolly hard workers than for being artistic, and they felt more than a little out of their depth at the beginning of this venture. But now they are moving forward with happy anticipation to a similar one this year and hope to make their Art Show an annual event in the local calendar.

## Recipe Corner

### ZUCCHINI CHEESE PIE

Cook and drain 6 cups thinly sliced unpared zucchini with salt. Shred 1½ cups Cheddar Cheese. Saute 1 cup sliced mushrooms in 1 tblsp. butter. Cook 6 slices bacon. Mix 2 tblspns. plain flour, 2 slightly beaten egg yolks, 1 cup sour cream. Fold in 2 stiffly beaten egg whites.

Layer half the zucchini, mushrooms, egg mixture and cheese in casserole dish, crumble cooked bacon on top, then repeat layers. Mix 1 tblsp. melted butter with ½ cup dry breadcrumbs and sprinkle over top. Bake in moderate oven for 25 minutes.

\* \* \*

Please send contributions for this Section to Mrs. W. Pye, 31 Kerferd Street, East Malvern, 3145.

## TREFOIL WEEKEND AT BRITANNIA PARK

It really is quite wonderful the atmosphere that  
clings,  
For once it's born it fosters on friendship's gleaming  
wings.  
So as the years grow shorter, and guiding memories  
climb  
Let's share them with each other in a Trefoil  
Gathering Time.

Let's gather round a roaring fire and pass the snaps  
around,  
And talk about just everything while wandering  
round the grounds.  
Let's sing the good old camp songs and giggle in  
our cots,  
Remembering all the funny things and laugh and  
sigh a lot.

Let's worship God together in a leafy, quiet place  
And remember all our loving friends now in a  
peaceful place.  
No one who's been a Girl Guide ever wants to  
stand aside  
So Trefoil's just the very thing to take our guiding  
wide.  
So if you want some moments so inspiring and  
yet rare  
Just join us at our weekend kept for Trefoil every  
year. M.T.

## WANNON RIVER TREFOIL GUILD

At a recent meeting of Wannon River Trefoil  
Guild, to which members of Scout and Guide Move-  
ments were invited, the guest speaker was The  
Honourable Michael Baden-Powell.

After speaking about the early life of his grand-  
father, Lord Baden-Powell, he said that the training  
and working together brought out character and  
quality in the young, that they had a strong bearing  
on their attitude to helping people and playing  
their part in the community and all lead to citizen-  
ship and endeavouring to live in harmony with  
different people and cultures.

D.H.

## REQUEST FOR UNIFORMS FOR EXTENSION RANGERS

Echuca Extension Rangers would be very grateful  
for any spare Ranger uniforms for their girls — sizes  
12, 14 and X.O.S. Please contact Mrs West, 6 Dunstan  
Street, North Balwyn, 3104, or telephone 857 9078,  
if you can help.

## STRZELECKI RALLY

Strzelecki Division held a Rally at Burnet Park  
campsite. Guide Companies from Traralgon, Mary-  
vale, Morwell, Hazelwood, Churchill and Glengarry  
took part.

Two challenges were cancelled due to the Total  
Fire Ban, but the theme of 'sunshine and fun' cer-  
tainly rang true. The day was a scorcher!

Our first challenge was to make a macrame  
woggle and this had to have two long strings left  
so as to tie our coloured bead on after completing  
each of the eleven challenges. When each girl's  
woggle was completed everyone was presented  
with a gold coloured scarf to represent the sun-  
shine.

Our Region Commissioner, Mrs Porter, officially  
commenced the Rally while we stood in horseshoe  
formation and the World Flag had been unfurled.

The 78 girls present were divided into five girl  
patrols and the fifteen Leaders were allocated to a  
challenge to supervise. Each Patrol then moved  
from challenge to challenge — Tent pitching and  
striking, making and climbing a rope ladder, fire-  
bucket drill, knitting a scarf for a mouse on two  
matches, First-Aid, Orienteering, making a 'Man  
from Mars' from natural objects, an 'Indian' car-  
rier, Life-Line throwing and a Wide Game.

Just before our 'barbeque tea' (cooked inside)  
when all girls had completed their challenge we  
were allowed to cool off up to our knees in the  
creek.

In the evening we had lively entertainment.  
Camp songs, sketches and mimes were performed,  
then everyone went home tired but happy. It  
really was a great day of fun in the sun.

—ANDREA HENLEY  
(First Traralgon Guide Company)

## LEYLAND BROTHERS FILMS

For an enlightening and adventurous fund-  
raising evening, Leyland Brothers Films are offering  
Local Associations their screening service.

The films are based on travels throughout Aus-  
tralia by the Leyland Brothers team. They will  
supply their own equipment and operator, and  
will screen two films from their library.

These are 16mm colour films, each of 50-minute  
duration. Takings of the evening are split on a  
50/50 basis with a minimum payable of \$40.00.  
More details are available on request from Leyland  
Brothers Films, 8 Sydenham Street, Highett, 3190,  
or telephone 598 5639.



## What is happening in the GUIDE SECTION?

Our new Part 2 Guide Handbook (which has all the revised badge syllabi) and the new 'B.P. Emblem Record Cards', will be on sale in March. Every Guide should have a Record Card as there is space to list the girl's progress for the Challenge Emblem and the Eight Point Badges, as well as for the B.P. Emblem.

**CHALLENGE EMBLEM:** The Challenge and Junior badges may be tested by the girl's own Guider if she has had training or has knowledge of the subject. A badge certificate and the Record Card are signed by the tester.

The service challenge is set and assessed by Patrol Leader Council. The Patrol Leader Council should consider what useful service is needed and relate this to the ability of the girl being given the service challenge. A service challenge could take a day, or it could require a few hours for two or three weeks. It is intended that the service challenge is a short term project — and is not related to the Service Flash. When Patrol Leader Council have assessed and approved the girl's effort in meeting the service challenge, they sign the Record Card next to that clause.

There is space on the Record Card for recording each 8 Point Badge as it is earned. The Guider should sign this record.

*To get the Emblem:* Take badge certificates and the Record Card to the Guide shop. If they are signed by the people listed above, the badge will be issued.

*B.P. Emblem:* Interest badges are tested by the testers authorised by the District Commissioner. The badge certificate must be signed by the tester, and the Record Card can also be signed by the tester.

### ABOUT THE CLAUSES

*Promise and Law:* These clauses should be left until the girl is 12 or over. The Commissioner signs the Record Card after she satisfies herself that the girl has thought about, and understands how the Promise and Law apply to herself.

When teaching a recruit the candidate should use activities and discussion to help explain the mean-

ing of the Law, Promise and Motto. The Guider checking this clause should observe the candidate's effort and ensure it has been thoughtfully and well done before signing the Record Card.

*Patrol Pennant:* The candidate must be the 'leader' in planning and organising of the training for the pennant. The Guider assesses the girl's work and effort in determining this clause — if satisfactory, the Guider signs the Card.

*Guide Gathering:* The Guide is likely to gain more if she participates in the activity for her B.P. Emblem when 12, 13 or 14. The girl will not benefit by just "attending" a Gathering, she must "take part", that is — participate. The card is to be signed by the Guider-in-Charge (or someone nominated by her) of the Gathering. This can be organised if the Guider in charge is informed of the candidate's attendance *before* the event so she or her deputy can observe the girl's participation. It is understood that if the girl did not join in and do her best — then her card would not be signed.

*Ranger Guide Activity* (take part after her 13th birthday): There are three areas or ways in which this could be done.

1. By visiting an activity or meeting which is arranged by the District Ranger Guide Unit; there would need to be some way of deciding whether the Ranger Guide Unit is having a worthwhile activity — perhaps the District Guiders' meeting could be a place to discuss this?

2. Through Region Ranger Councils. Good communication will be needed, as everyone will need to know who the Region Ranger Guider is—and the candidates informed as to the date and time of the activities which would be suitable for them to attend.

3. If the need becomes apparent there will be a Central activity arranged for Guides who do not have access to District or Region Ranger Guide activities.

As with the Guide Gathering, the Ranger Guider must understand that she does not sign the girl's Record Card unless the candidate really does *participate* in the activity.

## TO GET THE EMBLEM

All badges and clauses must be completed before the girl is 14 years and 6 months.

Send the following to your *Region B.P. Emblem Co-ordinator*.

All relevant interest badge certificates.

A short description of the Guide Gathering and Ranger Guide activity the candidate attended.

The Record Card signed by the people described overleaf.

A stamped addressed envelope for the Card's return.

If Record Card and badge certificates are in order, the Card will be signed by the Region Commissioner. Presentation of the signed card will obtain the Emblem.

NOTE: It was a decision at the Australian Sections Conference, Guide Section, that girls who currently hold the Queen's Guide Badge may not be awarded the B.P. Emblem.

## REMINDER

If your Patrols have not yet applied to join the Olave Patrol Challenge — DO IT NOW.

To obtain the first challenge the Patrol Leader needs to write to:

"Olave Patrol Challenge"  
Girl Guide Association  
20 Russell Street  
Melbourne, 3000

and enclose her patrol and Company names and a stamped envelope addressed to herself for reply.

—YVONNE JAMES  
(Guide Adviser).

## WOMANPOWER SOUGHT —

### Care to Help?

The Victorian Deaf-Blind and Rubella Children's Association is conducting a Doorknock Appeal on 22nd and 23rd April and needs 'womanpower'. Local Association members and leaders, if you or your friends would like to help, please contact Joy Jordan, P.O. Box 81, Carlton South, 3053.

---

Thanks to S. Barry, H. Bates, L. Richardson, V. Surry and G. Thomopoulos for photographs in this issue.

## QUEEN'S GUIDE CEREMONIES

Christine Webster gained her Queen's Guide badge and our Company gave her a ceremony which consisted of the twelve guides forming a horseshoe. Each guide held a candle and as we sang "This Little Guiding Light of Mine", we lit our candle, while Christine led us to form the rungs of a ladder.

Then while Christine climbed the rungs of the ladder a guide read out how she gained a particular badge. She stepped from the last rung and was presented with her Queen's Guide badge by her Guider.

—ANNETTE WARD  
(1st Nagambie Guide Company).

\* \* \*

Teena Walters was Great Western's first and last Queen's Guide. The Guides and Brownies of Great Western had a few short plays to entertain the guests who attended her badge presentation ceremony, and Councillor McCracken of Stawell presented Teena with her badge.

—NETA-MAREE RAPLEY  
(Wattle Patrol,  
1st Great Western Guide Company).

## TO KERANG FOR WEEKEND

A group of Guides and Ranger Guides from Box Hill enjoyed a weekend visit to Kerang.

They travelled by train and stayed with Guiding families in Kerang.

On Saturday morning they went on a cattle truck, loaded with bales of hay, to a poultry farm where they were taken on a detailed tour. Later they went to see where the first punt crossed the river. They had barbecue lunch at a farm in Murrabit, where the girls were shown how to make butter.

After crossing the border into New South Wales they were taken to a citrus grove where they picked oranges, mandarins and grapefruit. They visited a rotary dairy farm before tea and later enjoyed campfire.

Sunday was spent exploring Kerang with their new friends until it was time to catch the train home.

—3rd BOX HILL GUIDE COMPANY.



# RANGERING AROUND

NAMES of the two Age Groups within the Ranger Section are:  
Ranger Guides: 14 to 18 years and  
Rangers : 18 years to 25 years.

## **RANGER COUNCIL OF VICTORIA** **For 18-25 year old Rangers**

The Ranger Council is an ideal liaison between our Adviser, the Ranger Section Central Committee, Headquarters and YOU! The most important function of the Ranger Council, though, is to enable us all to get together, share ideas and to plan together under the new programme.

Does YOUR unit send a representative along just once a month? It does not have to be the same person each month and two can come if they wish. But if you really cannot get someone there, or are a country unit, *please* contact Janette Phelan (89 7849) or Jenny Morrison (337 9709) with an apology. If necessary information will be passed on to you and we welcome all ideas and suggestions for discussion.

Meetings are held at Guide Headquarters, 20 Russell Street, Melbourne on the first Wednesday of every month from 7.00 p.m. to 9.00 p.m.

P.S. The Ranger Council also serves as a good advertising agency as there *should* be someone from every unit present.

## **REGION RANGER GUIDE-RANGER COUNCILS**

It is just twelve months since we sent out information about the setting up of these councils, and during that time many REGIONS have formed councils, giving Ranger Guides and Rangers opportunity to get to know girls of their own age in nearby districts. I urge all Ranger Guides and Rangers to make sure your unit is represented at *your* Region Ranger Guide-Ranger Council. Relationships with other People is one of the eight areas in our programme, let us make use of it.

The introduction of the B.P. Emblem into the Guide Section Programme gives us more opportunities to show Guides something of what we do. Guides will be looking for activities with Ranger Guides-Rangers, so they can fulfil one of the clauses in the B.P. Emblem — let us make sure we offer exciting, interesting things for them to participate in.

## **REGION RANGER GUIDE-RANGER COUNCILS** **(A summary of Aims and Guidelines)**

1. To provide a wider range of activities than may be possible within one Unit.
2. To give Ranger Guides-Rangers an organised voice in their Programme and Activities.
3. Provide wider opportunities in learning Committee Procedures, and in planning, organising and implementing their Programme.
4. To give Ranger Guides-Rangers the opportunity of meeting other girls within the Region, to exchange ideas, news and views, thus widening their experience and friendships.

## **Region Ranger Guide-Ranger Councils consist of**

- a. One or two Ranger Guides from each Ranger Guide Unit within the Region.
- b. One Ranger Guide Leader.
- c. One Ranger from within the Region.
- d. Chairman, Secretary and Treasurer to be elected annually.

The Region Commissioner must be informed of all activities whether they be camping or boating for the weekend, a day spent orienteering or a night dancing, and the Region Camp Adviser is the person to consult about Region Camps. Do not forget to let your District Commissioner know what you are doing.

WHATEVER YOUR PLANS PLEASE REMEMBER THERE ARE LONE AND EXTENSION RANGER GUIDE UNITS IN BOTH COUNTRY AND METROPOLITAN AREAS WHO WOULD LIKE TO TAKE PART.

—JEAN TWIST  
(Ranger Adviser).

## FOOL'S WEEKEND AT TAPESTRY

1st-2nd April.

Do not miss this chance to practice light weight camping under supervision of experts, and have a FUN weekend at the same time. Both Tapestry committees have joined together to provide an interesting worthwhile programme for Ranger Guides and Rangers. Get in early as numbers are limited. Application forms in February Circular, any queries to Anne Meech, telephone 99 1628.

## RANGER SECTION SERVICE PROJECT — 1978 State-A-Thon

To aid the Anti-Cancer Council of Victoria.

Have you completed your Thing-a-thon? We have heard about Trike-a-thons, Dance-a-thons, Iron-a-thons and Car Wash-a-thons. What has your unit done? Our target is \$4000.00 to buy special equipment to help a doctor at St. Vincent's Hospital with her research work on Cancer. All money to be sent to Mrs J. May, 119 Johnstone Street, Broadmeadows West, by 23rd March. Telephone 309 6409.

## STATE-A-THON RALLY

Come, come, one and all, on Sunday, 9th April, at 10.00 a.m. to 2.00 p.m. on the Yarra Bank, Alexandra Avenue, Melbourne, near Morell Bridge. Everyone welcome, barbecues available. Bring your own lunch, and a cup for cordial.

Due to the danger of having a large number of people on the road at one time, we are asking Metropolitan REGION RANGER COUNCILS to organise a team of TEN (10), (as well as those coming by ordinary transport) to A-THON to the RALLY. Everyone to arrive between 10.00 a.m. and 11.00 a.m. so that we have a large crowd present when we hand over our cheque to the Anti-Cancer Council.

Cheer the canoe enthusiasts as they compete in the Mini Marathon from Dights Falls to our venue, join in other activities or just enjoy being there.

Ribbon links, with names, to be completed in UNITS and REGIONS and sent, with numbers attending the Rally, to Rhonda Barrett, 352 Highett Street, Richmond, 3121, by 23rd March, to enable us to display these at the Rally. Any queries to Rhonda, telephone 42 3397, or Mrs M. Daly, telephone 850 2467.

## ARCHERY DAY

15th April, at Ivanhoe Primary School, Waterdale Road, Ivanhoe, only three minutes from Ivanhoe Station. Come and try something different. Programme under direction of the Kew City Bowmen. Instruction in the morning and a Tournament in the afternoon. Application forms in February circular.

## Ranger Section Promotion Throughout Australia

ALL RANGER GUIDES, RANGERS and RANGER GUIDE LEADERS are asked to make a special effort during APRIL 1978 to let more people know about our activities.

Why not use 9th April as this special day in Victoria, to tell everyone what you are doing for our State-a-Thon? Write articles for local newspapers, display posters in shops, banks and libraries; ask Brownies and Guides to some of your activities and talk to friends and parents. We have a wonderful programme, let everyone know about it.

## SAILING SCHOOL

Sunday, 16th April — Advanced Canoeing Day (White Water), for holders of Canoeist Certificates only, at Doon Reserve on the Yarra River — applications with February Circular.

22nd-23rd April — Basic Canoeing Weekend — Canoeing at 'Auravale' Cardinia Reservoir, overnight accommodation at the Clematis Guide Hall — see February Circular for further particulars and application forms.

## RANGER GUIDE, RANGER CONFERENCE

24th-25th June, 1978

At least two representatives from each Unit are expected at this Conference; do not wait until *after* the Conference to ask questions and offer suggestions. NOW is the time to let the Conference Committee know what you want. Jane Eddy, Conference Secretary, will be pleased to hear from you. Her address is 30 Gramattan Street, Beaumaris, 3193.

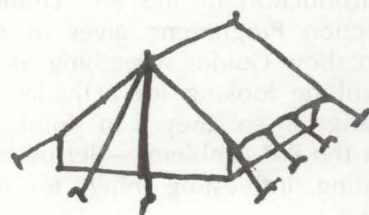
## RANGER GUIDE LEADERS' CONFERENCE

Saturday, 8th July, 9.00 a.m. to 4.30 p.m., at Y.W.C.A., 489 Elizabeth Street, Melbourne.

Now is the time to find out more about the Ranger Section in Victoria. More information next month.

## RANGER SECTION DINNER

8th July — after the Ranger Guide Leaders' Conference — all members of the Ranger Section welcome, keep watching for details.





### RANGER GUIDE-RANGER UNIFORM

Correct Uniform is — Blue A-line frock with light blue revers and collar. This may be worn with a matching jacket and a light blue skivvy. The matching Forage Cap is worn forward on the head, and has a metal State Badge pinned on the front slightly to the left of centre.

Uniform, like any other clothing, is set off by the right accessories. Well polished shoes of a simple style (navy or black) and natural coloured pantyhose, are details which add to that well-turned-out look.

Badges: A MAXIMUM of TWO only to be worn on either side of the dress.

N.B.: WORLD BADGE only to be worn on the JACKET.

INVESTITURE BADGE is worn on the right hand COLLAR of the frock.

### HIGH INVESTITURE

Surrey Hills Ranger Guides had their first ever investiture and all nine girls became 'Rangers'.

We held our ceremony on the roof top of 'the Hilton', truly in the heart of Melbourne. The scenery had to be seen to be believed.

The Hilton did more than anyone could expect to make us welcome. They greeted us at the door and took us up 22 flights to the roof and champagne, orange juice and a private waitress.

There Rangatira invested us with the help of our District Commissioner. Then we went down to the Coffee Shop for breakfast and a group of German and Indian businessmen learnt all about Ranger Guides in Australia.

—SURREY HILLS RANGER GUIDES.

## 5th AUSTRALIAN VENTURE

'Gettogether Goodtimes'

28th December 1978 - 8th January 1979

This is the first time the Scout Association of Australia has extended an invitation to the Ranger Section to participate in this event, which is held every three years, therefore to make it a success and in particular the Ranger Section part in it, we have set out requirements for both Ranger Guides and Ranger Guide leaders who wish to participate.

The camp will be for 11 days plus travel. Any Ranger Guide or Ranger Guide leader who wishes may apply, but the following requirements must be met.

### A Ranger Guide Participant must

- be an Invested Ranger Guide
- have camped in a minimum of three Ranger Camps or hold a Lightweight Camp Certificate
- be recommended by the Unit-in-Council and the Ranger Guide leader
- have some experience with mixed activities.

### A Ranger Guide Leader Participant must

- be recommended by Commissioner and Ranger Adviser
- be interested in the possible activities and have experience of combined activities
- be interested in and, preferably, qualified in boating or other special activities
- hold a Ranger Section Camp Qualification
- be an invested member of the Ranger Section.

A ratio of one Ranger Guide leader to eight Ranger Guides is required, so the number of girls attending will depend on the number of leaders who apply. Applications will be available shortly from the Ranger Adviser at Girl Guide Headquarters. Please send a stamped self-addressed envelope.

—JEAN TWIST.

### CROSSWORD COMPETITION WINNERS

Winners of the 5th Australian National Venture Get-together Goodtimes crossword competition are Petrina Dakin, West Doncaster Ranger Unit; Cathy Connelly, Surrey River District Venturer Unit; Janet Gaunt, Warrigal Venturer Unit (N.S.W.); Paul O'Brien, Chester Estates Unit (Queensland); Greg Pritchard, 1st Nedlands Unit (Western Australia); and Steven Thomas, Arafura Venturer Unit (Northern Territory).

# DOWN IN THE ARCHIVES

Every Guider who has attended a Stage 1 Training course knows that after Lord Baden-Powell held the experimental camp on Brownsea Island, he wrote his book "Scouting for Boys" which appeared in fortnightly parts in the beginning of 1908. Recently I came across a publication — privately printed in U.S.A. — of letters written by B.P. between October 1907 and October 1908. It is called "The Founding of the Boy Scouts as seen through the letters of Lord Baden-Powell". It is edited by Paul C. Richards and was published by the Standish Museums and Unitarian Church, East Bridgewater, Massachusetts, in 1973.

Almost all the letters were written to Mr Peter Keary, who was on the staff of C. Arthur Pearson, and was 'assigned to the task of dealing with B.P. in arriving at an agreement'. Mr Pearson, as many of you know, helped B.P. to organise the Brownsea Island camp, and provided financial backing for the establishment of the Movement. Pearson's publishing firm agreed to publish a fortnightly penny magazine, to be called 'The Scout', and B.P. was to travel about Britain giving lectures on the principles and the organisation of Scouting.

Discussion on the terms of this agreement take up many of the letters, and B.P. held strong views on the need for a 'dissolving clause' saying he could not bind himself or his scheme for an indefinite time. The fact that he was still in the army presented problems; apparently he would have had to obtain War Office permission for each signed article he wrote for 'The Scout' while he was on full pay.

Frequently I felt frustrated by only seeing one side of the correspondence, and I longed to know more of the background of B.P.'s comments. For example, in his letter of 30th December, he has a p.s. — "Hurrah for Socialists and Civil War!! and LOOT for me!" The editor gives a footnote to the effect that — During peace time Lt.-General

Baden-Powell received full military pay only while on active duty, every other fortnight. Should the military be placed on full-time active duty, such as in the case of a national crisis, B.P. would receive full pay. I wonder if there was some political crisis at that date, and B.P. was put back on full pay?

The Founder expressed himself very forcibly on proof-reading: on occasions his corrections to the proofs had been completely ignored, and he was most annoyed about it. He also became very annoyed about the too free use of his name, and says in reference to some samples of Boy Scouts post-cards — "I received the samples of the Boy Scouts Post Cards — but find my name again printed all over them. It is really too bad. I shall be forced to give up the whole thing if there is any more of it. One evidently cannot trust to the discretion of the staff and the only way will be to give instructions that my name is not to appear without previous acquiescence from me."

I would be interested to know whether the spelling errors in some of the letters are B.P.'s own way of writing those words, or if they are typing errors of the American printer, or if the words were actually spelled that way in 1907. e.g., "The farmer can supply milk, butter, eggs and 'fouls'."

"Scouting for Boys" appeared in book form in the spring of 1908, and on 30th May B.P. wrote: "I have received the beautifully bound copies of "Scouting for Boys" and am returning four signed as requested. I am sending one each to the following — Duchess of Connaught, Prince Edward of Wales (later Duke of Windsor), Prince Albert of Wales (later King George VI), President Roosevelt (Theodore Roosevelt)".

What fabulous collectors' items those copies would be! I wonder if they are still in existence somewhere.

—MARY LAMBE, (Archivist).



# KNOW YOUR REGIONS

## East Metropolitan Region

East Metropolitan Region consists of seven divisions. The area stretches from Hawthorn to Box Hill and Camberwell to Warrandyte.

*Box Hill Division* incorporates the Districts of Box Hill, Kerrimuir, Koonung Heights, Bennettswood, Wattle Park and Surrey.

The first settler, Arundel Wrighte, arrived and took up a grant of 320 acres made to him by the Government of the colony of New South Wales in 1860. Box Hill was named at a meeting of local residents — the name chosen being the nomination of Silas Padgham, who in the first year became Box Hill's first Postmaster.

*Camberwell Division* includes the Districts of Balwyn, North Balwyn, Deepdene, Canterbury, Greythorn, Camberwell-Hartwell, Glen Iris and Burwood.

Soon after the white man came to Camberwell, the men of the Boorandah tribe danced their coroborees on the grass where the Civic Centre now stands.

Aborigines had a tribal ground at Deepdene.

The name of Balwyn came from two words, the first being Gaelic 'Bal' and the second Saxon, 'Wyn'.

There was an infamous road known as "Main Gipps Land Road", but the name signified hope rather than fact. This later became "White-horse" Road because of an inn which had a tin sign with a blue coated jockey astride a white horse at the north-west corner of Elgar Road.

Booroondra northern hills concealed some grains of gold. Near Hill Road, North Balwyn, a long quartz reef two feet wide was found. It jutted above the ground and in 1858 two Cornish miners sank a shaft to explore it, but the gold was sparse and the mine too poor. Exactly a century later the shaft reappeared in the middle of a suburban street.

In 1914 land was given to Guides and Scouts and the buildings erected then are still in use.

*Eastern Suburbs Division* covers the Districts of Kew and Hawthorn.

The Parish of Boroondara was divided into three districts, Hawthorne, Kew and Camberwell.

Because of its nearness to the growing city of Melbourne, Hawthorne developed more speedily. The three districts gradually developed, the first to secede being Hawthorne, which was proclaimed a municipality in June 1860 and in the process lost the "e" from its name.

The first Guide Company in Victoria was opened in 1911 in Burwood Road, Hawthorn.

*Doncaster-Templestowe Division* incorporates the Districts of Doncaster, Bulleen, Templestowe, Donvale and Warrandyte.

The history of this area goes back to the 1850's when gold was found in Warrandyte and German settlers commenced planting fruit trees in "Waldau".

Today Warrandyte is the home of a number of craftsmen, and a day can be spent wandering along the main street with its art galleries, waxworks, pottery displays and plant nurseries on the banks of the Yarra River. Natural wild life is still to be found and the gold memorial and mine tunnels provide interesting hikes.

Parts of Donvale and Park Orchards have retained their natural bush and Donvale campsite is well used by the Guides of the Region. Both areas are readily accessible by tramway bus from opposite Guide Headquarters in Russell Street, and would be excellent for Pack and Company excursions.

—WENDY SWIFT.



### FOR SALE

Spinners and Weavers. Perendale fleece. \$1.20 per pound. From Mrs Flora Richardson, "Woorndoo", R.S.D. Mortlake, 3272. Homespun yarn available also.

# A CAUTIONARY TALE

—Dedicated to all those who answer by return.

Headquarters wrote in March to ask a Region Commissioner to find  
A really good patrol to do a job they had in mind.  
"The keen adventurous kind", they wrote. "You know, the B.P. sort"  
We know your Region is just the one to give us this support.  
"That's easy" thought Commissioner, "I know of quite a few,  
But perhaps it would be seemly 'proper chanel's' to pursue.  
I'll just postpone replying, in a day or two or less, I can let Headquarters have the P.L.'s name and her address.

## So Headquarters waited, and . . .

The Region Commissioner rang the Division Commissioner who was just a bit harassed,  
Her twins had turned the gas tap and they'd nearly all been gassed.  
"We have some grand patrols," she said. "That won't be hard to find".  
But she pigeonholed the message in her overcrowded mind.

## So Headquarters waited, and the Region Commissioner waited, and . . .

The message lay there dormant for a fortnight and a day.  
When, lying in her bath, she heard her hard-worked conscience say,  
"There's something you've forgotten." And it hit her like a bomb,  
So, wrapped in towels, she seized her pen, and wrote to the District Commissioners.

## So Headquarters waited, and the Region and Division Commissioners waited, and . . .

The D.C. had been called a sick aunt to attend, and then stay with her until her health was on the mend.  
When late in April, she came home and found Division Commissioner's request  
She 'phoned through to the Guider who had trained her P.L.s best.  
"She's out at country dancing now," the Guider's mother said.  
"Would you ask her please to ring me up before she goes to bed?"  
Perhaps Mama was sleepy, or the Guider just forgot;  
The District Commissioner sat waiting, but answer came there not.

## So Headquarters waited and the Region Commissioner waited, and the Division Commissioner waited, and the District Commissioner waited, and . . .

When she, at last, made contact the Guider said she's send  
A message to her P.L.s who were camping that weekend.  
She called a P.L.'s Council to decide who'd be the best;  
The P.L.s thought the scheme was grand, and entered in with zest.  
At length Patrol-in-Council put the matter to each Guide,  
"Oh, super!" "Smashing!" "Gosh, what fun" was heard on every side.  
So the answer sped back quickly through P.L. and Guider too,  
Through District Commissioner and Division Commissioner — taking just a week or two —  
And when the patient Region Commissioner 'phoned Headquarters at last  
They were really very sorry, but the Big Event was  
PAST.

K.S.H.

(Reprint, rewritten, originally courtesy of Council Fire)

Now that every Unit receives 'Matilda' this sad tale should no longer apply to Victoria, should it?

But Guiders — do you share your copy promptly with

- your Assistant?
- your Unit Helper?
- your patrol leaders?

'Matilda' hopes you all do so, but she still hears of some Guide folk who only know of events after they are over.

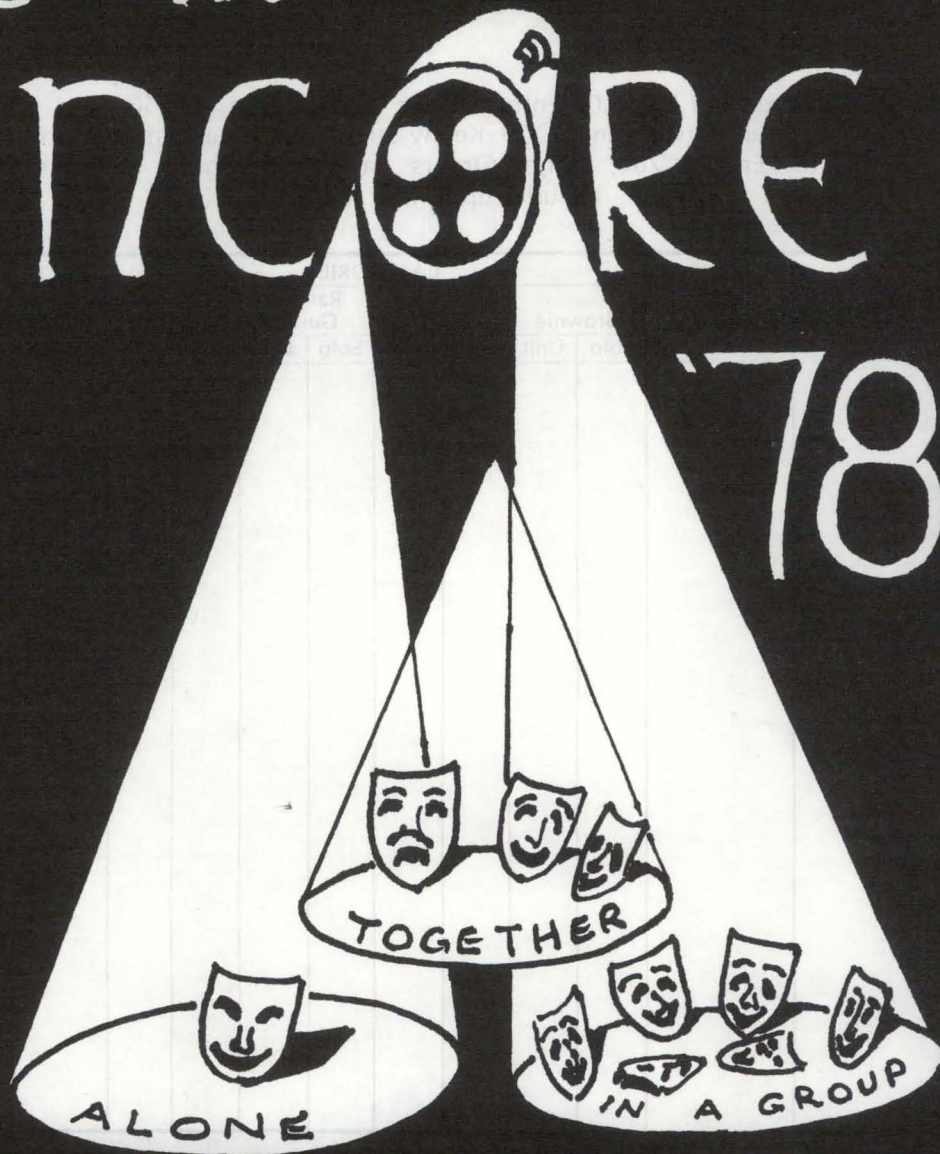
## FOR SALE

Complete Ranger uniform. \$25.00. Please telephone Mrs Lynette Jones at 729 3225.

Be in

ENCORE

'78



GIRL GUIDES

but hurry...



# Encore '78

## APPLICATION FORM

Application forms, accompanied by \$1.00 entry fee per Group Item, or 50c per Solo Item, should be forwarded to the Treasurer, Mrs J. Anjou, 29 Kenny Street, North Balwyn, 3104, by 30th APRIL. Cheques to be made payable to "Encore '78"; Money Orders payable at South Melbourne Post Office. Solo includes up to four members.

| Name of Unit | Region | CATEGORIES |      |       |      |              |      |        |      |             | Type of Item |
|--------------|--------|------------|------|-------|------|--------------|------|--------|------|-------------|--------------|
|              |        | Brownie    |      | Guide |      | Ranger Guide |      | Ranger |      | Comb. Sec.* |              |
|              |        | Solo       | Unit | Solo  | Unit | Solo         | Unit | Solo   | Unit |             |              |
|              |        |            |      |       |      |              |      |        |      |             |              |

Name, address and phone number of Representative for further contact

.....  
 .....

Entry Fee enclosed

Stamped self-addressed envelope enclosed.

.....

\* Combined Section Item will comprise girls from any of the 4 Sections who belong to the one family, or perhaps, one District. There will be a maximum number permitted — probably 6 or 8 — watch next edition of "Matilda"!



# MATILDA SUBSCRIPTIONS

Note: Copies of "Matilda" will be automatically issued free to each Commissioner (but not Assistants), each Guider in charge of a unit (but not Assistants) and certain other personnel. PLEASE NOTIFY CHANGES OF PERSONNEL AND ADDRESS PROMPTLY, including former name and address and unit, where applicable.

SUBSCRIPTIONS are PAYABLE IN ADVANCE and should be directed to GIRL GUIDES ASSOCIATION, 20 RUSSELL STREET, MELBOURNE, 3000.

SUBSCRIPTION is \$5.00 per annum post free (single copies from Headquarters for 50 cents). Please arrange for "Matilda" (commencing with the May 1978 issue) to be sent to the following:

| Mr, Mrs,<br>Miss and<br>Initial | Name | Address | Post Code |
|---------------------------------|------|---------|-----------|
|---------------------------------|------|---------|-----------|

---

.....  
 .....  
 .....  
 .....  
 .....  
 .....  
 .....  
 .....  
 .....  
 .....  
 .....  
 .....  
 .....  
 .....  
 .....  
 .....  
 .....  
 .....  
 .....  
 .....  
 .....  
 .....

(BLOCK LETTERS PLEASE)

On behalf of.....

Cheques or Postal Notes (made payable to Girl Guides Association) enclosed for \$.....

## GANG SHOW APPLICATIONS

Ranger Guides, Rangers and Young Leaders.  
 Application forms for 1978 Scout Gang Show are now available from the Secretary to the Advisers at Guide Headquarters.

**ST. GEORGE'S DAY SERVICE**  
**St. Paul's Cathedral**  
**21st April, 1978**  
**7.30 p.m.**

# TRAINING CALENDAR

Commissioners and Unit Leaders with the necessary experience are welcome to apply for ANY training. Applications should be sent **prior to the closing date** and be accompanied by the Training fee and a **stamped self-addressed envelope**. Early application for all courses is recommended. Training fee is \$3.00 unless otherwise stated. **For a full campcraft course the fee will be \$6.00 — this does not include the actual cost of the weekends (food/transport, etc.).**

## Stage 1 Leadership Course

**Canterbury:** Weekend 6th-7th May, 18th June (outdoor day) and 1st-2nd July, times 10.00 a.m. to 4.00 p.m. Guide Hall, Faversham Street. Applications to Mrs F. Ludbrook, 5 Curnola Avenue, Doncaster, 3108, by **20th April**.

**Lakes Entrance:** Weekend 6th-7th May and 17th-18th June, times 10.00 a.m. to 4.00 p.m. Applications to Mrs. M. Frawley, P.O. Box 641, Sale, 3850, by **20th April**.

**Rutherglen:** Weekend 17th-18th June and 15th-16th July, times 10.00 a.m. to 4.00 p.m. Applications to Miss H. Smith, 21 Cusack Street, Wangaratta, 3677, by **29th June**.

**Waaia:** Weekends 8th-9th April and 6th-7th May, times 10.00 a.m. to 4.00 p.m. Applications to Mrs M. Murphy, 73 Balaclava Road, Shepparton, 3630, by **20th March**.

**Baw Baw Region:** Weekends 24th-25th June and 22nd-23rd July, times 10.00 a.m. to 4.00 p.m. Further information available from Mrs K. Marshall, 29 Hearn Street, Drouin, 3818.

## Stage 2 Leadership Course for Warranted Leaders

**Bentleigh:** Weekends 24th-25th June and 22nd-23rd July, times 10.00 a.m. to 4.00 p.m. Applications to Mrs L. Jones, 14 Walker Grove, Cheltenham, 3192, by **2nd June**.

**Deer Park:** Weekends 17th-18th June and 15th-16th July, times 10.00 a.m. to 4.00 p.m. Applications to Mrs R. Bell, 10 Debenham Drive, St. Albans, 3021, by **29th May**.

**Geelong:** Tuesday, 11th, 18th, 25th July, 1st, 8th August, times 10.00 a.m. to 3.00 p.m. Applications to Mrs A. Bell, 1 Layton Crescent, Newtown, 3220, by **23rd June**.

**Mornington:** Weekends 29th-30th April and 24th-25th June, times 10.00 a.m. to 4.00 p.m. Applications to Mrs. F. Bucknell, P.O. Box 46, Mt. Martha. 3934, by **18th April**.

**Warracknabeal:** Weekends 6th-7th May and 17th-18th June, times 10.00 a.m. to 4.00 p.m. Applications to Mrs M. Creek, RMB 358, Nhill, 3418, by **20th April**.

**Wodonga:** Note — change in location from Corryong. Weekends 1st-2nd and 29th-30th April, times 10.00 a.m. to 4.00 p.m. Applications to Miss H. Smith, 21 Cusack Street, Wangaratta, 3677, immediately.

## Accent on Leadership

### Special Subjects for Guiders who have done Stage 2

Think of this as Stage 3 if you like, but it will be different from what you have done at Stages 1 and 2. Every Guider who comes to it has said so. The main aim by activities and discussion is to help YOU as a person — as a leader.

**Tatura:** Wednesday 5th, 12th, 19th, 26th April, 3rd May, times 10.00 a.m. to 3.00 p.m. Applications to Mrs M. Murphy, 73 Balaclava Road, Shepparton, 3630, by **21st March**.

## Local Association Training

**Beechworth:** Tuesday, 11th April, times 10.00 a.m. to 3.00 p.m. Applications to Miss H. Smith, 21 Cusack Street, Wangaratta, 3677, by **18th March**.

**Headquarters:** 22nd June, times 10.00 a.m. to 3.00 p.m. Applications to Training Department, Guide Headquarters, by **8th June**.

**Rochester:** 2nd May, times 10.00 a.m. to 3.00 p.m. Applications to Mrs M. Murphy, 73 Balaclava Road, Shepparton, 3630, by **19th April**.

## Making Musical Instruments From Household Discards

**Headquarters:** Tuesday, 18th April, time 8.00 p.m. to 10.00 p.m. Applications and \$1.00 to Training Department, Guide Headquarters, by **1st April**.

## Basic Mapping

**Chadstone:** Weekend 1st-2nd April, times 10.00 a.m. to 9.00 p.m. Saturday and 10.00 a.m. to 4.00 p.m. Sunday. Applications and \$3.00 to Training Department, Guide Headquarters, by **24th March**.

## Camp Gadgets Including Camp Furniture and Knotting

Weekend 29th-30th April, times 10.00 a.m. to 4.00 p.m. Applications and \$1.50 to Training Department, Guide Headquarters, by **21st April**.

## Safety Training

**Headquarters:** 30th May and 6th June, times 7.30 p.m. to 10.00 p.m. Note: 1 leader and 2 girls from each unit may attend. Applications and \$1.50 to Training Department, Guide Headquarters, by **6th May**.

## Knotting

**Kew:** Saturday, 29th July, times 10.00 a.m. to 3.30 p.m. Scout Hall, Glass Street. Applications and \$1.50 to Mrs F. Ludbrook, 5 Curnola Avenue, Doncaster, 3108, by **8th July**.

## Indoor Camp Permit

**Parkdale:** Weekend 24th-25th June, times 9.00 a.m. Saturday to 4.00 p.m. Sunday. Salvation Army Conference Centre, Monaco Street. Applications and \$9.00 to Training Department, Guide Headquarters, by **4th June**.

## CONGRATULATIONS to the recipients of the following:

### Guider Long Service

(10 years): Miss A. McGovern, Box Hill North; Mrs A. Thomson, Strathmore; Mrs V. Lewis, Cardross.

### Combined Long Service

(10 years): Mrs N. Hayes, Wangaratta.

### Local Association Long Service

(10 years): Mrs W.R. Kinghorn, Macarthur; Mrs V.B. Milne, Cardross.

## APPOINTMENTS AND WARRANTS

A warm welcome is extended to the following:

### Division Commissioners

Mrs D.G. Oldham, Sherbrooke; Mrs B.D. McNally, Knox East.

### District Commissioners

Mrs B.G. Murray, Research; Mrs N.H. Hansen, Strathmerton; Miss L. Beard, Northcote East; Mrs J. Williams, Kerang.

### Ranger Guiders

Mrs G.N. Watts, Ballarat Central Rangers; Mrs M.J. Van Berkel, Eureka Rangers; Mrs D. Robertson, Hopetoun Rangers; Mrs J.M. Bennie, Strathmerton Rangers; Miss L.M. Rigby, Portland Rangers; Mrs K.W. Waddington, Emerald-Lakeside Rangers; Miss M.F. Frost, Manangatang Rangers; Mrs H.A. Mason, Melton Rangers.

### Guide Guiders

Miss D. Porter, 1st Essendon; Mrs A. Tomada, 1st Ferny Creek; Miss C.M. Romeo, 1st Patchewollock; Mrs R. Rooke, 1st Marysville; Mrs D. Hopkins, 1st Toora; Mrs R. McConchie, 1st Dartmouth; Miss K. Borgmeyer, 2nd Kilsyth; Mrs J. Pake-man, 1st Doveton; Mrs J.H. Neal, 1st Undera; Miss B.M. Burrows, 1st Gardenvale.

### Assistant Guide Guiders

Mrs K.L. Buckingham, 11th Ballarat; Miss W.A. Butts, 9th Ballarat; Miss A.R. Lionnet, 1st Monash; Mrs M.C. Young, 1st Patchewollock; Mrs. G. Gill, 2nd Swan Hill; Mrs L. Campbell, 1st Marysville; Mrs W.T. Mackay, 1st Karingal; Miss N.A. Dewhurst, 1st Bendigo South.

### Brownie Guiders

Mrs T.J. LePoidevin, 12th Ballarat; Mrs P.L. Putt, 1st Briar Hill; Mrs I.M. Higgins, 1st South Merbein; Mrs B. Suffern, 1st Marysville; Mrs B. Flanigan, 1st Toora; Mrs M. Lewicki, 1st Eskdale; Mrs G.L. Addinsall, 1st Macarthur; Mrs A.J. McKay, 1st Windermere; Mrs L.F. Grigg, 1st Woorinen South; Mrs H. Nougher, 1st Brighton.

### Assistant Brownie Guiders

Mrs H.R. Earl, 1st Warragul; Mrs P.J. Hogg, 1st Briar Hill; Mrs K.W. Jones, 1st Kiewa; Mrs I.S. Renwick, 1st South Merbein; Miss S.J. Burton, 2nd Kilsyth; Mrs G. Chapman, 1st Toora; Miss R. Bannan, 2nd Northcote East; Mrs J.T. Fuz-zard, 1st Strathmerton; Mrs D. MacGavin, 1st Hoppers Cross-ing; Mrs P.R. Blamey, 2nd Belmont; Mrs W.G. Trueman, 1st Kingston Heath; Mrs N.M. Clement, 2nd Leongatha; Mrs G.G. Murray, 4th Cheltenham North; Miss H. Baldock, 3rd Highett; Mrs J.M. Bethune, 2nd Mordialloc.

## REGISTRATIONS

2nd Drysdale Pack; 2nd Kingston Heath Pack; 2nd Wood-end Pack; Greensborough Rangers B; 1st Mitcham Ranger Guides; Wannon River Division Ranger Guides; Altona North Ranger Guides; Portland Ranger Guides; Eltham Ranger Guides; 1st Wheelers Hill Company; 1st Kiewa Company; Axedale Local Association; 6th Glen Waverley Pack.

## RESIGNATIONS AND RETIREMENTS

We acknowledge with gratitude the services given by the following, whose Warrants have been returned:

### Division Commissioners

Mrs W.J. Eather, Sherbrooke; Mrs E.C. Jones, Gippsland East; Mrs A.E. Huxtable, Knox.

### District Commissioners

Mrs G.R. Rennie, Alexandra; Mrs H. Baker, Strathmerton; Mrs A.H. Welham, Northcote East.

### Ranger Guider

Mrs J.L. Knight, Preston East Rangers.

### Guide Guiders

Mrs C. Evans, 1st Portarlington; Mrs J. Clark, 1st Upwey; Miss R.E. Bell, 1st Belgrave; Mrs J. Steuton, 2nd Simpson; Mrs G.A. Paterson, 2nd West Heidelberg; Mrs E. Lander, 1A Sale; Mrs R. Byrne, 1st Keilor; Mrs L. Brehaut, 3rd Bairnsdale; Mrs N.P. Summers, 1st Baxter; Mrs J.F. Burns, 1st Somerville; Mrs C. Cox, 1st Doveton; Mrs D. Campbell, 3rd Don-caster East; Mrs Z.J. Ludby, 3rd Echuca; Mrs J.L. Geddes, 1st Paynesville.

### Assistant Guide Guiders

Miss D. Porter, 1st Essendon; Mrs E. Graham, 1st Yallourn; Mrs B.J. Goudie, 1st Upwey; Mrs L.E. Berry, 1st Upwey; Mrs B. Rogerson, 2nd Simpson; Mrs D. Robertson, 1st Hope-toun; Miss M.A. Cohen, 4th St. Kilda; Mrs J. Pakeman, 1st Doveton.

### Brownie Guiders

Mrs K.C. Hutchinson, 1st Portarlington; Mrs A.H. Sweat-man, 2nd Portarlington; Mrs J. Michael, 4th Hawthorn; Mrs J.F. McCracken, 1st North Sunshine; Mrs R.C. Whitehead, 1st Port Fairy; Mrs H. Robinson, 2nd Edithvale; Mrs R.L. O'Toole, 2nd Cohuna; Mrs B. Lowe, 2nd Castlemaine; Mrs H. Walker, 1st Marnoo.

### Assistant Brownie Guiders

Mrs K.E. Miller, 4th East Malvern; Mrs J.W. Laycock, 4th Hawthorn; Mrs L. Billan, 2nd Sale; Miss A. Cainer, 4th St. Kilda; Mrs K.M. Moffat, 3rd Wodonga.

Except for articles where copyright restrictions are indicated, material in "Matilda" may be reprinted in Guide and Scout magazines without prior permission. A credit line would, however, be appreciated.

# From the GUIDE SHOP

## NEW ITEMS

|   |        |
|---|--------|
| Boum! The Guiders' Book of Games .. . . .   | \$3.50 |
| The Book of Brownie Skills .. . . .   | \$4.00 |
| Brownie Wall Hanging .. . . .   | \$2.25 |
| Brown and Gold or Blue and Gold Gift Wrapping Tape .. . . .   | 30c    |
| New range of Guide Trophies for Individual, Patrol and Unit Presentations — prices range from \$1.70 to \$20.30 |        |

## SUGGESTIONS FOR PATROL BOXES

|  |          |
|--|----------|
| Girl Guides Handbook .. . . .  | \$1.60   |
| Girl Guides Handbook with cover .. . . .   | \$1.85   |
| Patrol Ideas Book .. . . .   | 45c      |
| Activities for Patrols .. . . .  | 90c      |
| Uniform Wear and Care Chart .. . . .   | 10c      |
| Uniform When, What and Where .. . . .  | 12c      |
| An Australian Campfire Song Book .. . . .  | 75c      |
| Thinking Day Song — Words and Music .. . . .                                       | 10c      |
| B.P.'s Life in Pictures .. . . .   | 90c      |
| Scouting for Boys .. . . .   | 65c      |
| Story of the Four World Centres .. . . .   | 90c      |
| Briefly, It's Guides .. . . .  | \$1.50   |
| Sheet of Pictures of Our Guide History .. . . .                                    | 20c      |
| Past and Present — A Story of our Guiding .. . . .                                 | 50c      |
| Gone Home — A leaflet about Lady Baden Powell, including her last message .. . . . | 5c       |
| The Story of Our Flags .. . . .  | 32c      |
| Flag Ceremonial .. . . .   | 45c      |
| Sheet of Flags of all Nations .. . . .   | 25c      |
| Set of four Girl Guide and Girl Scout Uniforms of the World 1-4 .. . . .           | each 15c |
| Activities and Games for Patrols .. . . .  | \$1.20   |
| Wide Games and Night Games .. . . .  | 45c      |
| Guide Games and Recipes .. . . .   | 45c      |
| Games From Many Lands .. . . .   | 60c      |
| Flag Game .. . . .   | 15c      |
| Handcrafts for All Seasons Book 1, 2, 3 and 4 .. . . .                             | each 90c |
| Are You a Camper? — Hints on the Camper Badge .. . . .                             | 30c      |
| Camp Cooking — quantities for Patrols of six .. . . .                              | \$1.20   |
| Off to Camp — The Patrol's Own Camp Book .. . . .                                  | 85c      |
| Outdoor Ideas .. . . .   | 35c      |
| Compass and Maps .. . . .  | \$1.35   |
| Firemaking — Bushcraft series .. . . .   | 75c      |
| Knots and Lashings — Bushcraft series .. . . .                                     | 75c      |
| Learnabout Knots — Ladybird series .. . . .  | 75c      |
| Knots for Everybody — Pocket size folder .. . . .                                  | 15c      |
| Hints on Girl Guide Badges —   |          |
| Laundress, Needlewoman .. . . .  | 40c      |
| Handywoman .. . . .  | 65c      |
| Mapreader, Pathfinder .. . . .   | 50c      |
| Health .. . . .  | 40c      |
| Help Yourself to Hike Cooking .. . . .   | 70c      |
| Help Yourself to Play a Guitar .. . . .  | \$1.00   |
| A Book of Guide Prayers .. . . .   | \$1.35   |
| Live and Pray .. . . .   | 70c      |
| The Wild White Pony and Other Guide Stories .. . . .                               | \$1.25   |
| You Can Draw a Kangaroo .. . . .   | 45c      |

## Postcards —

|   |          |
|---|----------|
| H.M. Queen Elizabeth II .. . . .  | 12c      |
| H.R.H. Princess Margaret as President of the Girl Guides Association .. . . . | 8c       |
| The First Lord Baden-Powell of Gilwell .. . . .                               | 10c      |
| Olave, Lady Baden-Powell .. . . .   | 15c      |
| Four World Centres .. . . .   | 15c      |
| The World Flag .. . . .   | 10c      |
| A Matter of Life or Death .. . . .  | 75c      |
| How to Survive .. . . .   | \$1.50   |
| Your Friends — Modern Living Series .. . . .                                  | \$1.75   |
| Teenage Entertainments .. . . .   | 60c      |
| Australian Legendary Tales .. . . .   | \$1.00   |
| Have Fun With Nature Books 1, 2, 3 and 4 .. . . .                             | each 85c |
| Stars of the Southern Hemisphere .. . . .                                     | 60c      |
| Clouds, Wind and the Weather .. . . .   | 35c      |
| <b>Important Souvenir — Stocks almost finished:</b>                           |          |
| The Queen's Silver Jubilee Badges will be worn on uniform until June.         |          |
| Cloth badge for Guides and Brownie Guides .. . . .                            | 25c      |
| Metal badge for Guiders, Rangers and Ranger Guides .. . . .                   | \$1.00   |
| Self adhesive stickers — per 10 .. . . .                                      | 25c      |
| each .. . . .   | 3c       |

## CELEBRATE WITH MIRBOO NORTH

Mirboo North Local Association, Guides and Brownies would like to see past leaders, Guides, Brownies and Local Association members during the Mirboo and District Centenary celebrations between 3rd and 9th April, 1978.

Our day will be Saturday, 7th April, when a new flag will be presented and the Memorial Log Cabin at the Scout Hall park will be opened.

Further information available from Local Association Secretary, Mrs V. Bright, R.S.D., Foster Road, Mirboo North.

## RAIL CONCESSIONS — WASTE PAPER CONSIGNMENTS

All Districts and Units which collect waste paper and consign it to the Australian Paper Manufacturers' plant at Broadford are asked to note that rail freight concessions will be granted by the Treasury, but it is necessary for applications to be accompanied by a letter from Guide Headquarters and for applications to be lodged at least fourteen days prior to date of despatch of consignment. If wishing to seek rail freight concessions at any time please contact the State Secretary in good time.