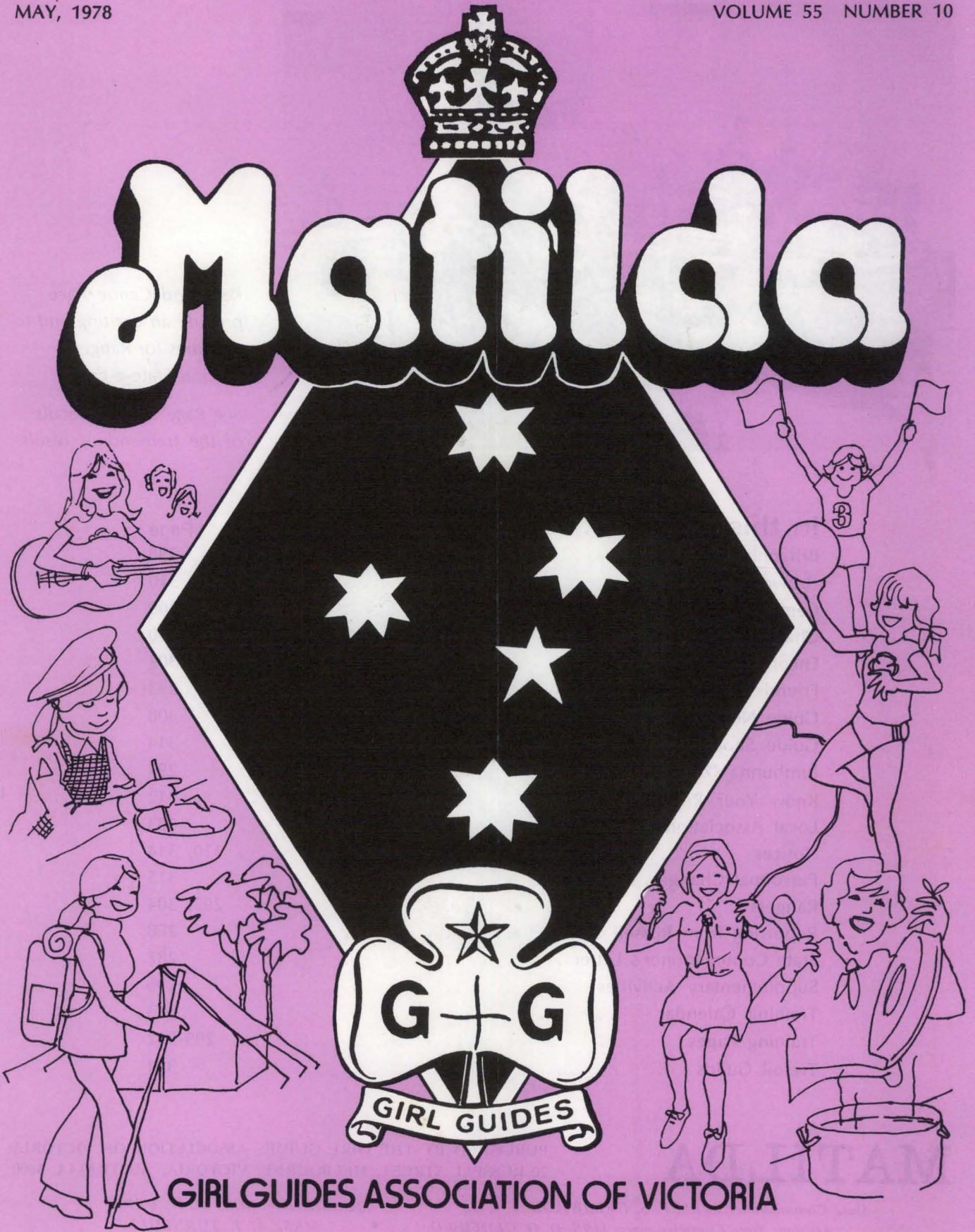


MAY, 1978

VOLUME 55 NUMBER 10

Matilda



GIRL GUIDES ASSOCIATION OF VICTORIA



Rally and Canoe Race provide an exciting end to activities for Ranger Section State-a-thon.

See Page 289 for details of the tremendous result.

In this issue . . .

	Page
Britannia Park	298
Brownies	310
Camper Van	309
Chapel at Iluka	290
Encore '78	307
Friends of World Centres	293
Guide News	308
Guide Shop	314
Jumbunna '78	294
Know Your Regions	312
Local Associations	303
Notices	310, 314
Personnal Changes, etc.	315
Rangers	295, 304
Reporting from Russell Street	288
State Commissioner's Letter	287
Supplementary Activities	296
Training Calendar	313
Training Pages	299-302
Trefoil Guilds	311

MATILDA

PUBLISHED BY THE GIRL GUIDES ASSOCIATION OF VICTORIA
20 RUSSELL STREET, MELBOURNE, VICTORIA, AUSTRALIA, 3000

State Commissioner: MRS. F. S. GRIMWADE

State Secretary: MISS M. W. BARR

Assistant State Commissioners: MRS. D. O. OLDFIELD

MRS. A. J. TURNBULL

Editor: MRS. L. I. RICHARDSON, 31 Hampshire Road, Forest Hill, 3131



From our State Commissioner

Dear Everyone,

Recently I was saddened by a question which appeared in a question box — "How can we put the FUN back in Guiding?"

I have only discovered the joys of Guiding in recent years — but one of the things I have discovered is that it is fun — fun for girls and fun for adults, and I would not have missed these years for anything. The Guide programme covers such a wide spectrum of activities that girls and leaders should be able to plan a programme that is interesting, enjoyable and adventurous for each individual. If this is the case then the fun is usually generated by the girls themselves.

Camping and outdoor activities are found the greatest fun by Guides, so if you do feel we need to put more fun into Guiding, then I think you may find your answer in more adventurous outdoor activities in your programme. Here you may have a way of involving the community in your activities by calling in a number of outside experts to help.

I spent a very happy weekend in Korumburra during the Karmai Festival when the district celebrated fifty years of Guiding. The Saturday began with a street procession in which Brownies and Guides participated. A great deal of thought and work had gone into their floats. After the procession we had a barbecue luncheon at the Guide Hall and I was thrilled to be able to present warrants to five new guiders.

A celebration dinner was well attended by those who had been involved in Guiding in the early days and all enjoyed the reminiscences of Deaconess Cath Ritchie, one of the first leaders.

On Sunday morning the Uniting Church was packed with brownies, guides, parents and friends. The girls participated extensively in the service, which was most stimulating. Straight afterwards we

had Brownie Ring on the church lawns so I could present some well earned badges to the brownies — this seemed to me a very fitting way to end a very happy visit.

This weekend Jean and Peg had also attended a conference at Bairnsdale which they found interesting and fun.

Sunday was the blessing of the Betty Macartney Chapel at Iluka. It was a lovely day and the chapel is truly beautiful. We are indebted to Mr Jim Barr, Peg's brother, for the design and construction work, and to Alan and Della Hutchinson and other friends of Iluka who helped to build the chapel.

We can all feel we have a part in the chapel with the altar base made from rocks from every region in the State. The other thing which so many of us appreciated was the symbols of the different religions hanging behind the altar. I know this very beautiful chapel will give great inspiration and joy to the many who use it over the years.

Easter seemed to come and go very rapidly — it was wonderful having all the family home and we seemed to have friends around most of the time. We had the Donessen Rangers staying and enjoyed seeing them again.

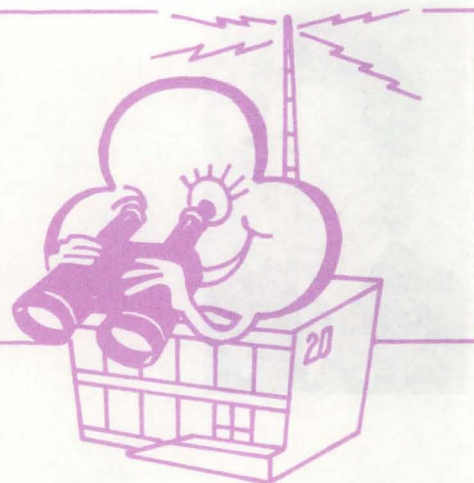
We have recently held a meeting with some tertiary students, a few no longer involved in Guiding, and we were most interested in their views. Hopefully this will result in us being better able to cater for the needs of this group, many of whom through pressure of work are no longer able to be actively involved.

The Lady Delacombe Cup had record entries this year, and I was delighted to join Mrs Carlyon and her band of workers to present the trophies at the end of the day. All who play golf this day greatly enjoy it — and the Guide Movement is very fortunate to have this group helping us. We certainly appreciate the financial assistance they give us each year.

Lysbeth, Peg and I visited St. Margaret's School, Berwick, to present the school with a Thanks Plaque in appreciation of their assistance during the Training and Sections Conference. It was fitting we could present it to four girls who had worked so hard in the kitchen during the conference. Their alterations, now complete, are very nice.

(Continued on Page 294)

REPORTING FROM RUSSELL STREET



BIG FELLA CHINWAG

We appreciate the comments that have been sent in by interested members in response to our request for opinions on those items scheduled for discussion at the forthcoming Australian Association Assembly (end of June) and World Conference (September).

The World Conference Agenda has now reached us and we would welcome members' thoughts on:

1. The Child Facing Today's Changing World:
 - How can Girl Guiding/Girl Scouting offer alternatives to the pressure of society?
 - Does the Movement educate girls to accept and conform to the present society or to change that society?
 - How can we help the girls develop through Community Service?
2. To what degree is Guiding meeting the needs of girls in Australia?.
3. Does Guiding do enough to reach the minority groups of our community? If not, why not? What minority groups exist here and what should we do about them?
4. How effective are we in the living of the essential elements of Guiding—
 - Duty to God
 - Service to others
 - Loyalty to one's country
 - Universal brotherhood
 - Personal responsibility
 - Respect for all living things.What can be done to be more effective?
5. What do you consider to be the critical needs of the Movement now and in the foreseeable future?

These are a few of the topics to be raised at the World Conference — please think, and comment. Applications for the Big Fella Chinwag to be held on Wednesday, 7th June are still being accepted, so send your name to Headquarters now and come on that day at 6 p.m.

OPEN DAY FOR ALL COMMISSIONERS

Our Annual Open Day for all Commissioners will be held at Headquarters on Tuesday, 20th June, from 10.00 a.m. to 3.00 p.m. A happy, thought-provoking day is assured and we hope many Commissioners will take this opportunity to get together with their colleagues to share their ideas and experiences. If you are planning to come — and we hope you are — please send your name to Guide Headquarters by 13th June. Lunch will be served at a cost of \$1.00.

ANNUAL REPORTS

May is Annual Report month when everyone reviews her unit's happenings for the year, looks at the membership figures and assesses the annual membership fees payable to Headquarters. We hope all units will be able to meet the increased subscription of \$6.00 without undue difficulty, but should you have any queries or problems please write or phone the State Secretary for advice.

As our channels of communication only work effectively when each link in the chain does its best to fit in with the others, we would ask all Leaders and Commissioners to try to have their returns sent on to the next person involved by the due date.

AUSTRALIAN INTERNATIONAL COMMISSIONER

Those of you who have had the pleasure of working with (Mrs) Marjory Lane will be delighted to hear that she has been appointed Australian International Commissioner. She will take over from Mrs Renshaw Jones, who is now our Chief Commissioner-Elect, this month. We are sorry to lose Marj from our State team but she will do an excellent job for Australian Guiding in the International field and we congratulate her on her appointment.

YOUTH GARDEN PARTY

How sad we were that Government House had to cancel this year's Youth Garden Party on account of the weather and the wet condition of the lawn. We know there were many disappointed Guides and Ranger Guides and we were particularly sorry for the country people, some of whom had already left home when news of the cancellation was received. There were frequent radio announcements on the Friday afternoon, and Headquarters also tried very hard to spread the news to all members who were attending.

However, a small number of girls did not know the party had been cancelled until they arrived and we were very sorry about this.

A REMINDER

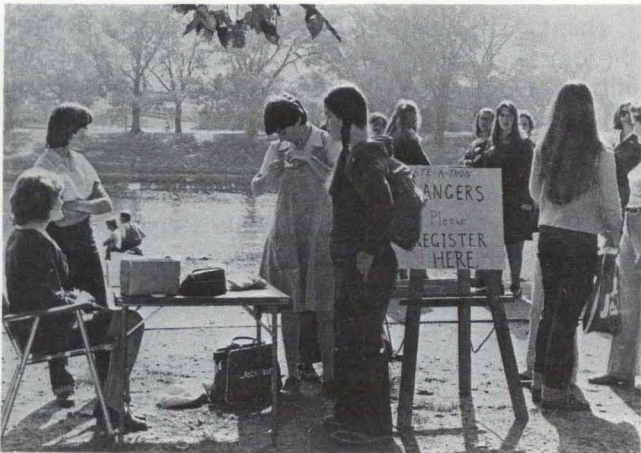
The State Campfire — a Golden Jubilee Happening — Ballarat — Saturday, 20th May, 7.00 p.m.

\$10,000 for Anti-Cancer Council of Victoria

When the 1977 Ranger Guide-Ranger Conference decided to hold a State-a-Thon for the Anti-Cancer Council as their 1978 Service Project we had a mystery on our hands as no one knew what a State-a-thon was. A small committee started making plans and produced guidelines for the project.

Interest started to grow throughout Victoria and units began to vie with each other to produce the most imaginative ideas for their Thing-a-Thons. By the beginning of this year we had Ranger Guides, Rangers and leaders taking part in a wide variety of activities. With much energy and lots of fun girls took part in car-wash-a-thons, talk-a-thons, ping pong-a-thons, iron-a-thons, pick-a-thons, and even a May Pole-a-thon. The result was \$10,000.00 raised for the Anti-Cancer Council. \$4,000.00 of this is to be used to buy a Wild MPS Microphoto System which we had set as our target.

The project culminated in a 7-mile canoe race on the Yarra River and a Rally on the Yarra Bank. Region teams came from near and far, some on foot, others by bicycle. One Region brought a skipping rope half a mile long and the girls dressed in our historical uniforms were a sight to behold!



Early arrivals at Rally

While waiting to cheer the canoeists as they arrived many girls and leaders tried the New Games, organised by Guide leaders from North Metropolitan Region, and the Fitness Track around the Gardens.

Eventually the time came for Rhonda Barrett and Katie Summers to present our cheque to Mr. David Harris of the Anti-Cancer Council of Victoria. Before a backdrop of hundreds of blue and gold ribbon links printed with the names of girls and leaders who took part in the State-a-Thon, Mr. Harris introduced Dr. Garson who is carrying out research work at St. Vincent's Hospital. She told us about her work and how the equipment which we are buying will help her in her laboratory.

State Commissioner, Mrs Grimwade, congratulated everyone on a very successful project and we sang the Ranger Song.



Inspecting Microphoto System with Dr Garson

Canoe race winners were then presented with trophies and everyone who took part received a certificate to commemorate the event. Special certificates were presented to our State Secretary, Miss Peg Barr, and Assistant State Commissioner Mrs Jean Oldfield for "having a go" at paddling on the Yarra.

Special thanks for all their work to the Sailing School Committee, the State-a-thon Committee, M. Daly, J. May, K. Summers, R. Barrett, B. Pye, and R. Frey, and all Ranger Guides, Rangers and leaders who took part in the State-a-Thon. We have all had lots of fun and exercise, as well as raising a lot of money. Ranger Section has gained in many ways from this effort.

J.T.



THE BETTY MACARTNEY MEMORIAL CHAPEL

It seemed fitting that Sunday, 19th March, was a windy day — as we lifted our eyes to the trees and flags flying above us it helped to lift our thoughts and our vision of the work Betty had done for the Guide Movement and passed on to other hands.

Camp Iluka was looking its best as guides of all ages took part in the service of blessing. With us were some who had known Betty in her activities outside Guiding — all joining together to pay tribute to the energy and thought she had brought to the Movement she loved.

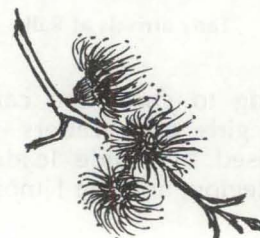
The arch at the front of the Chapel bears symbols of meaning to many members of the guide movement throughout the world, and emphasised the words in the Blessing... "Lord, skilled in thine own craft here on earth, look with favour on the materials with which this Chapel has been furnished. Bless them to thy glory and grant that those who gave, those who built and those who use them may be ever mindful that their service is to thee" . . .

Thanks are due to those who helped towards the day of Blessing — Mr Jim Barr who designed and arranged the building of the chapel and those who took part in the service.

Associated with the chapel is the lectern given in honour of Mrs Cynthia Morell and Miss Jess MacDonald by Mornington Peninsula Region, all in a setting of natural loveliness.

After the service there was an opportunity of fellowship with the many friends who had gathered to remember Betty and the service she had given.

M.S.





ARE YOU TAKING YOUR UNIT TO THE WORLD CONFERENCE?



In imagination, we mean, of course! Unfortunately, we cannot all be there — but it is YOUR Conference, it is OUR Conference — most importantly, it is THE GIRLS' Conference. So let us be sure that the girls in the units know all about it — the where, the when and the why of it.

Looking in my books on international Guiding, I can find very little about Iran — apart from a brief outline of the history of Girl Scouting in "Trefoil Round the World", and the Brownie and Guide (Angel and Scout) uniforms and badges in the uniform charts and Brownie Painting Books — but songs, games and activities are not shown — and I am quite sure that children in Iran play and sing just as they do anywhere else!

Perhaps that could be a unit project for the next few weeks — to find out what the girls of a comparable age like to do when they are not in school or helping around farm or home (because it is largely a rural country, and a special rural Scouting programme has been arranged for children in the rural areas). Then the unit could play the games, carry out some activities such as cooking an Iranian meal, and try to imagine, through pictures and books, together with these activities, what life might be like in Iran. It might even be possible to borrow or hire films for a film evening — with parents and friends of the unit, of course.

With preparations for the International Year of the Child (1979) being carried out by UNICEF and non-governmental organisations (like WAGGGS) which work alongside UNICEF, there will almost certainly be discussion on this during the World Conference. So this is a good opportunity to show the girls in the units how we work with UNICEF to help improve the situation of children.

Here are suggestions for activities for units—

1. Find out what happens at a World Conference — who attends? What do they do? Find out about Associate and Full Members of the World Association. What are the links which bind all member nations?
2. Find out about the Movement in Iran — compare the age groupings, the Promise and Law of each section. Does programme or uniform differ from ours?

Resource material may be found in — "Trefoil Round the World", "Basics", Brownie Painting Books, Guide Uniform Charts.

3. Make a frieze or project book on Iran, to give an impression of the land, its people, culture, etc.

Resource material — Books from local libraries, encyclopedia, magazines.

4. Learn about UNICEF — how does it work? who are the people it aims to help? who supplies the finance? How can WE help?
5. UNICEF has helped many children in many countries — Brownies or Guides could act or illustrate one of these — perhaps one about children in Iran?
6. Learn about aims, organisation and preparation for the International Year of the Child, and what we can do to play our part in it.

Resource material is available from the UNICEF offices in capital cities. There is an excellent set of booklets, "Child of UNICEF Stories", which includes one on Iran.

Help the girls in your unit to feel that the World Conference is THEIR Conference!

L.R.B.



COUNCIL FIRE

The present subscription rates for **Council Fire**, the quarterly journal of the World Association of Girl Guides and Girl Scouts are:

1 year — £1.00 sterling.

3 years — £2.85 sterling.

If payment is made direct to W.A.G.G.G.S. at the World Bureau by International Money Order, at present exchange rates this means:

1 year — Aust. \$1.67 plus poundage

3 years — Aust. \$4.75 plus poundage.

Another method of payment is to send direct to W.A.G.G.G.S. 10 International Reply Coupons — obtainable at any Post Office — which will be the equivalent of 1 year's subscription.

The Editor of Council Fire would like to make it clear that the subscription rates have remained at their present level since October 1975 and there is no intention of raising them at present.

The increased rates announced by Gordon and Gotch in January 1978 are a result of an increase in their handling charges and are not related to the official subscription rates for Council Fire.

MEMORIES OF THE CHIEF GUIDE

Earlier this year I attended the Commissioners' Conference which was opened by Mrs M.A. Buntine (a former Chief Commissioner for Australia) who spoke of her memories of the late Chief Guide The Lady Baden-Powell.

I thoroughly enjoyed her talk and some of it is reproduced so that more of us can have the opportunity to learn about the wonderful qualities of our late Chief.

"In reminiscing about the Chief Guide Olave, The Lady Baden-Powell — I feel there is no need to speak solemnly, nor to look mournful. She would have hated that for she extracted the maximum amount of fun and pleasure from any situation in which she found herself. It is true that we have suffered an irreparable loss and we have to try to find ways in which to fill the gap as much as possible, but those of us who knew her, will always remember her with joy and laughter, and that is how I want us to think of her tonight.

It was at one of the World Conferences that I first really saw the Chief Guide in action. By then she did not attend all the sessions, but was a Very Special Visitor whenever she wished to come or had no other commitment. There was always a seat for her on the platform and whenever she appeared, an electrifying current seemed to run through the whole assembly. She would come in smiling, waving her hands in response to the greeting she always received. She was the friend of everyone present.

The effect was most noticeable when new countries were being admitted to membership of the World Association. This is a very impressive ceremony, but sometimes rather an ordeal for some of the representatives, especially in the last few years when so many newly-emerging countries from Asia, Africa and the Middle East are being admitted and their delegates were often shy and ill at ease. But there was the Chief, with her smile, and as each new country was admitted the representative would get a hug or a double handshake and an enormous smile of welcome, and the look of strain would disappear, replaced by one of happiness and delight.

At the World Conference in Denmark in 1963, we had the joy of presenting the "ice-cream" to the Chief. I remember asking her if she would see our little delegation in her room at sometime convenient. When we arrived and presented her with a nice big cheque she was as excited and delighted

as a child. We explained that it was for her to use as she liked, but we hoped she would spend at least some of it on herself. She did not — not really. She said she bought a garden seat and a new Guide hat, but I think she would have had to have those in any case. The "ice-cream" money was spent translating Guide books into the language of these newly admitted countries who could not have afforded to do it for themselves.

Whenever she was in England her home, with its treasures from all over the world, was filled with visitors — mostly Guide folk from other countries, but with a fair representation of army and civilian friends and acquaintances. Thirty or forty for afternoon tea would be a quiet day, but she never got their names mixed, nor their backgrounds, and could make all the introductions without any faltering.

I always remember that on my first visit, we had been to some gathering in the afternoon and I heard her say to various people — 'My dear, you MUST come home and have dinner with us.'

Of course, little short of an invitation to Buckingham Palace would have made anyone refuse and I was wondering how ever would her housekeeper cope with this influx of unexpected guests. But "dinner" was a boiled egg, bread and butter, and honey — all delicious I am sure, but I doubt if anyone was really conscious of what they were eating because they were getting so much from what was being said.

That Sense of Values was part of the Chief's strength. She knew what was important and what was unimportant. How much time and energy do most of us waste on the unimportant."

Mrs Buntine then went on to describe the many delightful and memorable incidents which had occurred during the Chief's last visit to Australia in 1967.

In closing her talk, Mrs Buntine continued by saying:

"This is the end and the beginning of an era for Guiding, and during this conference you will be planning how you are going to meet the challenge.

I have no inspired blueprint to offer to you, but this I would like to say. I believe with every bit of me that the foundations on which Scouting and Guiding were built are as sound and relevant today as they ever were."

WENDY SWIFT,
International Adviser



FRIENDS OF WORLD CENTRES

UNWRITTEN RULES OF GUIDING

There is always something exciting happening at the World Centres, and much of this excitement is shared with our friends here in Victoria . . . news such as this, from Olave House.

"During this past summer we had the World Association Juliette Low Gathering for Rangers/Seniors 16-18 years of age. Thirty-one girls from 22 countries attended. Before they came to Olave House some had participated in Jubilee Camps of the U.K. Girl Guides and a Danish International Camp. The girls had many ideas, news and views to share with each other. The theme of the gathering was **Peace** and how one achieves it, personal peace and how one can be an instrument for peace within her home, her work and her community.

To discover ways in which people do this the girls went in small groups to meet people in London at their places of work, in their homes and elsewhere to interview them about their feelings on peace and how they achieve it. On return to Olave House the participants formed themselves into small groups and expressed what they had discovered either through an audio-visual presentation or by dramatic expression.

A sightseeing trip on the river Thames to see London at night, a day's trip to the New Forest and Foxlease, a Girl Guide training centre in Hampshire, an evening to meet family and friends or to go to a show were all squeezed into the eight busy days.

On the final night a presentation of what they discovered during the week, and a display of national costumes and dances brought the gathering to an end. The next morning it was time for good-byes, promises to write, and a final meditation in the garden before going separate ways to try to put into practice the things each one had promised herself to do."

The three newsletters received each year by Friends of World Centres contain news of all sorts from the World Centres themselves. In order to become a Friend, an annual subscription of \$1.00 or a Life Membership of \$25.00 may be sent to Miss M. Callister, 4/4 Ballater Street, Essendon, 3040.

How many times have you heard the phrase, "It's one of the unwritten rules of Guiding"? Knowing this statement is made all too frequently, we invited Region Commissioners to list some of these so-called "unwritten rules". We felt that these were sometimes restrictive to exciting Guiding and that we should refute them or, if they were worthwhile, make them more widely known.

Some of the statements are misconceptions, others relate to basic rules or have grown from a specific situation involving a particular person or group and do not generally apply. We ask you to read them, bring your common sense to bear and act accordingly. We also ask you to advise us of any other "unwritten rules" that may come to your attention.

This month we will start by playing the "True or False" game. Read each statement then ask yourself whether it is true, false or maybe in special circumstances. Check your answers on page 298.

1. Members of the Movement must never use the right hand for shaking hands with fellow members. True; False; Maybe.
2. Only Guide units are permitted to sing 'Bravo' — Ranger units do not do so. True; False; Maybe.
3. Brownies and Guides should wear their promise badge on outings, etc., to be covered by insurance. True; False; Maybe.
4. A Division Commissioner cannot 'go back' to being a District Commissioner. True; False; Maybe.
5. The District Commissioner must be one of the signatories on all unit accounts. True; False; Maybe.
6. Flowers are not worn on uniform. True; False; Maybe.
7. A Guide unit must not meet during the daytime (after school); regular meetings must be held in the evening. True; False; Maybe.
8. Guiders should not attend Local Association meetings. True; False; Maybe.
9. Brownies do not march. True; False; Maybe.
10. Under canvas camps cannot be held in winter. True; False; Maybe.



ALL AUSTRALIAN PATROL LEADERS' GATHERING

15th May — 21st May, 1978

Jumbunna '78 is the third triennial All Australian Patrol Leaders' Gathering. The first being held in Perth in 1972 and the second in Adelaide in 1975.

The word "Jumbunna" means "Let's talk together", and the patrol leaders will do just that, as well as a programme of craft excursions, out-of-doors activities, drama and fun and games.

Ballarat and Queen's Anglican Grammar School will be our home for seven days and the school is providing us with beds, meals and the use of classrooms as well as the school's heated swimming pool.

Our Guides' Own will be held in the school chapel — a lovely quiet place. We have been saddened to hear of the sudden death of the school chaplain, Rev. John Davison, while our preparations are taking place, and we have sent our sympathy to the school and Mrs Davison.

Theme for our gathering is "Discover Yourself and Others". Having Ballarat with its historical background as our home, all girls attending have been asked to bring information about the early beginning and present activities of the area in which they live.

The Jumbunna badge is an on-going design showing a green map of Australia with the hostess state shown in gold. A patrol emblem of the hostess state is in the central position. Western Australia chose the Kangaroo Paw, South Australia the Sturt Desert Pea, and we have chosen the Southern Cross as it not only is our state badge but it was prominent on the flag used at Eureka. Under the emblem are patrol leader stripes.

Our scarves are gold — Ballarat Gold — with blue zigzag stitching and a fringed edge. Each girl will get a gold "dilly bag" to hold all her personal possessions as she moves about the school.

Our Opening Ceremony will include Guiding personnel of Victoria and Ballarat as well as local dignitaries and we hope the Chief Commissioner for Australia, Miss Mary Lambie, will stay with us for a few days.

Ranger section plans to spend a day with us and our final night will conclude with a Camp Fire led by Miss Peg Barr. We do hope you can join us.

JANET ANDERSON,
Hostess State Chairman

STATE COMMISSIONER'S LETTER

(Continued from Page 287)

I have just returned from the conclusion of the Ranger State-a-Thon. What a fantastic result — \$10,000 was presented to the Anti-Cancer Council for purchase of equipment, and Dr Margaret Garson who is doing research into leukaemia explained the use of the equipment to all who participated.

The gathering on the Yarra bank was great fun, exciting to see the canoe races and even the State Commissioner rode a tandem. Congratulations and well done, Rangers.

As this edition comes out — Patrol Leaders will be converging on Ballarat for Jumbunna '78. I hope many of you are planning to come to Ballarat for the mammoth Camp Fire on Saturday, 20th May. As we will all be in the city of gold this seems a great way to celebrate the Golden Jubilee of W.A.G.G.S. — so I hope we will see you there.

Love and best wishes,

Joan E. Grimwade

RANGERS ABROAD

In January, five girls from Preston East "Jika" Ranger Unit set out on a six-week tour of India and South-East Asia.

After 18 long months of preparation — fund raising, part-time jobs and poring over tourist brochures — the day finally dawned and we found ourselves standing rather bewildered at a busy airport — in India of all places! With the warnings of loved ones and the exclamations of "India! I wouldn't go there for the world" still ringing loudly in our ears — we gritted our teeth, pushed the sunhats more firmly onto our heads and took a secure hold of our luggage. Luggage — well yes — that posed a few problems. Lost luggage is not the best way to start off a holiday in a foreign country. Betty can vouch for that, as she had the misfortune to land in Bombay with only the clothes she wore. Telephone calls, telexes and forms in triplicate all proved fruitless.

Forever optimistic, however, we headed for Poona and Sangam with eager anticipation. There we were greeted by the new American Guider-in-Charge — Rani, and her assistant, a local girl, Yasmin. The hospitality we were shown there was typical of that we experienced throughout India. We were made to feel at home wherever we went.

Our nine-day stay at Sangam reinforced our notion that we are indeed fortunate to be part of the Guide Movement. Here we were not just tourists doing the endless round of galleries and museums — but were involved in much more interesting and, to our mind, worthwhile activities. It was in Poona that we really came to experience a little of what it is like being an Indian.

Thanks to Rani and Yasmin home hospitality was arranged for us and we were able to stay overnight with a family and join with them in their daily activities. While at Poona we visited and had meals with a cross section of people — from the very poor where we sat on the floor and ate with our hands to the very rich where we were given soft drinks instead of water.

A tour through the local hospital, again arranged by Sangam, was an eye-opener; however, we decided that none of us would become ill in India. Naturally we visited several Guide Companies while at Poona and discovered many interesting things of Guiding in India, e.g., it is compulsory in the 8th and 9th standard and is organised by the schools. This element of compulsion we found to be generally regarded with disfavour on the part of the leaders.

A service project we undertook whilst at Sangam sprang to our minds after visiting the local government school at Fulengar Colony, just opposite Sangam. Sixty children rose from the boards on the floor and literally saluted us as we entered the schoolroom that could equally well have passed for a jail — with bars and shutters on the windows.

Our project was to invite the 4th standard children (9 years) to Sangam for an afternoon of art-work — with the express purpose of displaying the decorations in the schoolroom. The children did not speak English — but this proved no barrier as soon they were chopping up crepe paper and cardboard with great satisfaction. The end product was armfuls of paper chains and an interesting collection of mobiles — fish, elephants and kangaroos (with spots like leopards). The decorations were duly hung in the classroom, to the delight of the tiny scholars who, with wide brown eyes, followed every move.

After bidding a sad farewell to all the friends we had made in Poona, we spent the next two weeks touring India — Bombay, Jaipur, Delhi and, of course, Agra to see the Taj Mahal.

Next on our itinerary was Thailand and Malaysia. Kuala Lumpur provided an unforgettable experience following an accidental meeting with the Guides there. Numerous tents and a very conspicuous gold trefoil set up in a park, all pointed to the fact that Guides were about. Following introductions we were invited back that night to attend their campfire, along with the Mayor and his wife. We accepted, and were treated to quite a show — traditional Malay dancing as well as typical campfire songs. Our rendition of "Snowy River, Roll" was well received.

Our real moment of glory, however, came the following day when we were again invited to join the Guides for the "City Day" celebrations — a public holiday in Kuala Lumpur.

The Prime Minister, Datuk Ooi Hussein, was rowed around the Lake, accompanied by a flotilla of small craft, and later inspected the Boy Scout and Girl Guide camps. We were invited to join with the Guiding dignitaries and were introduced to the Prime Minister and his wife.

The Ranger Cadets in Singapore were no exception to this open door hospitality — inviting us to their homes for Chinese New Year — traditionally a family time.

(Continued on Page 306)

SUPPLEMENTARY



ACTIVITIES

BROWNIE BIKIES

Brownies, this is for you! Your family are welcome to come and enjoy a family day as well. However, BROWNIES ONLY will be given instruction on the day.

This is a day run by ROSTA and the Police Scouters. Brownies will receive instruction on riding their bikes safely, how to handle bikes in different conditions, Road Safety rules, and will be given a turn on the circuit to demonstrate their knowledge. We will have Hector and Millie, the Road Safety Cats, appearing during the day. We hope to have films and games, displays of new bikes, a riding display by professional bike riders, and much more.

When — Sunday, 30th July (or if wet, Sunday, 6th August).

Time — 9.45 a.m. to 4.00 p.m.

Where — Kew Traffic School, Cotham Road, Kew.

Number of Brownies participating in the instruction is LIMITED TO 150.

What to wear — Camp uniform if possible. Otherwise warm sweater and slacks.

What to bring — Your bike — if you can possibly get it there. Your bike tool kit (or ask Dad to bring his). Raincoat and hat. Hike ground-sheet.

Fee — Single: 70c, Unit: 70c per person, Family: \$2.50.

Closing date for applications, 1st July, 1978. Earliest applications accepted first.

NOTE TO FAMILIES

This activity makes a good family day. ROSTA and the Police like to have the families present, particularly Dads, if possible. There is much of interest to be learned. Instruction will cover Brownie Cyclist and Road Safety badge syllabus.

Families may watch the films, join in the games and look at the displays.

They may observe instruction sessions and work done on the School circuit if they wish.

Should you wish to have a barbecue you are welcome to bring your portable to cook a sizzling lunch. You may prefer a picnic lunch. Please bring your own hot or cold drinks for the day.

There are two final points of importance:

1. Please bring your receipt on the day. This is your ticket of entry.
2. In the event of wet weather on 30th July resulting in a postponement to 6th August, we will publish telephone numbers and names of persons you can contact for information — in June issue of "Matilda".

BROWNIE BIKIES APPLICATION FORM

NAME:

ADDRESS:

TELEPHONE NUMBER:

UNIT NAME:

NAME OF BROWNIE/S TAKING PART:

.....
.....

Brownie will/will not be bringing a bicycle (cross out that which is not applicable).

NOTE: Units, please accompany your application with the list of Brownie names and whether each will have a bicycle or not.

I enclose the fee and a stamped self-addressed envelope.

Single — 70c.

Unit — at 70c per person. Total.....

Family — \$2.50. Number.....

Tick that which is appropriate and please fill in the necessary details.

SIGNED.....

Parent/Guardian/Unit Leader.

CLOSING DATE — 1st July, 1978.

Please send application form with fee to Mrs M. McLean, 2 Wyatt Street, Seaford, 3198.

Please make cheques/money orders payable to Supplementary Activities Committee.

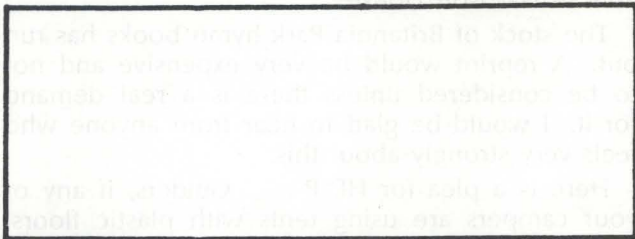


CALLING ALL SHUTTERBUGS

SAC and Public Relations Department hope to organise a Photography competition. So keep tuned to this channel, same time next month, for details.

SAC ON THE BEAT

We now have SAC Region Representatives. Watch this space for Region news.



**ROUND UP
APPLICATION FORM**

NAME.....
 ADDRESS.....
 TELEPHONE NUMBER.....
 UNIT.....
 HEIGHT.....
 WEIGHT.....
 HORSERIDING EXPERIENCE:
 • Beginner.....
 • Ridden once or twice (please give details)

 • Ridden regularly for at least one year (please give details).....

PARENT'S PERMISSION:

I am willing for my daughter.....
 to attend Round Up and enclose \$25.00 fee.

.....(SIGNED)

Please mail application form with fee to Mrs M. McLean, 2 Wyatt Street, Seaford, 3198. Applications close 20th May.

(Lo Lodge is fully approved by the Education Department and the Department of Youth, Sport and Recreation.)

**PUPPETRY WORKSHOP
PINOCCHIO**

The Scout Association kindly allowed us to use their hall in Richmond, where Dianne Caldwell was waiting for us. Dianne was quite at home, for this is where her Guides meet. There were 12 adult applicants for the workshop.

Our Puppeteer Mr Les Brumhead, President of the Australian Puppetry Guild, arrived with a station wagon full of block foam, sheet foam, pieces of fur, material remnants, paints, dowling, plywood, saws, buttons, eyes, glue, Mobile Puppet Theatre, completed puppets and marionettes. He even provided an electric carving knife — which was used for cutting and shaping the block foam, to be finally smoothed by an electric sander — which, if not carefully used, tossed the block foam right out of your hands!!

We were fascinated when shown Les Brumhead's puppets and marionettes, and how to work them — Oh, my goodness, we would never be able to make those! Surprise, surprise — we did! And what a lot of fun it was making, comparing progress and admiring the results. There was not sufficient time to make marionettes, they are very complicated.



It took a lot of patience to get the glue from our fingers. And then mixing the "instant papier mache" — what a mess, but we managed to mould some very good heads. One in particular took my interest, it was a copy of Lord Baden Powell's head and was produced from a bust of B.P. (in the uniform he wore at Mafeking) found at the hall.

We were amazed to find it was time to go home, and could barely wait to get back to our creations

next day, finish them off and make others. Even though the same patterns were used, each puppet was different — they had their own personalities. There were horses, dogs, lambs, fairies, prince, princess, snail, devil, monkeys, judge, elephant, super duck, and many more. All worked well, thanks to our excellent instructor Les.

Culmination of the weekend was putting on puppet shows with the puppets made, quite talented ladies!

All sections of the Movement were represented. Everyone of them enjoyed herself and made some excellent puppets. All would like to attend a further workshop and would recommend the activity to others. As a result of this weekend two members are joining a Puppetry Club, with others possibly joining in the future.

SAC was there — the hall was left as neat or neater than when we arrived.

Our grateful thanks to Les Brumhead, Dianne Caldwell, Megan our little helper, who will be the envy of the other guides, as she made two puppets on her own, Pat Cash and Phyl Macleod. **WHAT A WORKSHOP!**

UNWRITTEN RULES

Answers

1. False.
2. False.
3. False.

The Association's personal accident insurance covers Guides and Brownies "whilst under the control of or while engaged in any 'Guide Activity' with the knowledge of a warrant holder or other Guide official".

4. False.

It is interesting to note that Mrs Fairbairn became a Division Commissioner some years after being Chief Commissioner for Australia.

5. False, but a Guide account should have two signatories and it may be convenient for those concerned for one of these to be the Commissioner.

6. True.

7. False — units should meet at the time most convenient to their members.

8. Maybe — Guiders do not usually attend Local Association meetings regularly but they may do so from time to time by arrangement.

9. Maybe — skipping or walking is easier for Brownies than marching.

10. Experienced campers may be able to cope with winter conditions under canvas but inexperienced campers cannot. As a general rule no test camps are held during winter and less experienced leaders are strongly advised not to try it.

BRITANNIA PARK

How many of you know about Harrison House, our little bungalow away in the bush, but on your property, just waiting for you to come to stay in it? Jessie Lamond, our Camping Adviser, has been organising great improvements to it. There are comfortable bunks for three, water laid on, a wood stove. And now Jessie, with aid from her husband and friends, has had a shower room added with a gas water heater.

This is an ideal spot to get away from it all — to be with the birds (the feathered ones). Guiders sometimes have husband and children staying there while they, themselves, have their company camping on the property. The rent is very low and these days, when many people own gas campstoves and lamps, one can be even more comfortable in Harrison House.

The stock of Britannia Park hymn books has run out. A reprint would be very expensive and not to be considered unless there is a real demand for it. I would be glad to hear from anyone who feels very strongly about this.

Here is a plea for HELP . . . Guiders, if any of your campers are using tents with plastic floors PLEASE see that the floors are lifted during the day and let the sun get to the area. Two such floors were used during November and now, five months later, the grass has not grown there. Our lovely Stradbroke site is in a very bad state through over-use and I have asked Mrs Lamond to see that it is not used again before the State camp.

Another plea for help . . . The days of "scatter your firewood" are gone. PLEASE, if you have surplus firewood when you break camp, have your Guides stack it neatly near the cooking area.

Britannia Park lends itself to special functions. We have had an enquiry about another wedding in the chapel. My youngest daughter was married there nearly five years ago. I think there have been four weddings there so far. On one occasion the committee actually catered for it.

Blessings on the following who have helped to maintain their property on:

1977 — November

21: Denison Local Association.

1978 — March

7: Laverton Local Association.

11: Bulleen Local Association.

12: Seville Local Association.

20: Blackburn Local Association.

21: Blackburn Local Association.

22: Blackburn Local Association.

25: Hawthorn Ranger Guide Unit (1st Melbourne Greek).

—PAT GRAY (Acting Convener).



TRAINING PAGES

Newspapers

STOP PRESS!

Before you throw your newspapers into the recycling bag — recycle them through your unit first.

Belgium Fishing

Each player is given sufficient single sheets of a small newspaper or quarter sheets of a large one, to tear out three fish. The fish should be the length of the paper. A piece of string is attached to the belt of each player and the other end to the mouth of the fish so that the fish can lie flat on the ground.

Game: Each player endeavours to 'catch' another's fish by first standing on it and then picking it up. When a player loses a fish she retires to side of playing area to attach another of her fish before rejoining the game. When she has lost all three fish she is out of game. When all but one have lost their fish the game ends, the last one is applauded but the player who catches most fish wins on points.



Newspaper shapes

Each group has a double sheet of newspaper from which shapes have been cut, allow one for each member of group. All cut-out pieces are mixed up in the centre of the room. At the starting signal, No. 1 in each group runs to centre and selects a shape which she thinks will fit her sheet. She takes it back and if it fits she puts it into place. If it does not fit, No. 2 returns it and selects another one. Continue until all shapes are in place. First team to finish wins. Number of shapes may be increased to suit proficiency of members.

Parades:

(Hats, Aprons, International costumes, Nursery rhyme characters.)

Supply large amount of newspaper and pins, particularly for last two items. You may also need some illustrations from which members can copy. It adds to the fun if hats and aprons are given names.

Use discretion re judging — in Brownies it is best to praise everyone — if Brownies want to choose the best, divide into as many categories as possible and have voting done secretly.

Musical Paper-partners

Players in pairs, one holding a small newspaper sheet. Two circles are formed, one within the other, partners are separated, one in each circle. Circles move in opposite directions. When the music stops, or some sound is made, partners find each other and both must stand on the sheet of paper. Last pair to do so drops out of game.

Paper cutting race

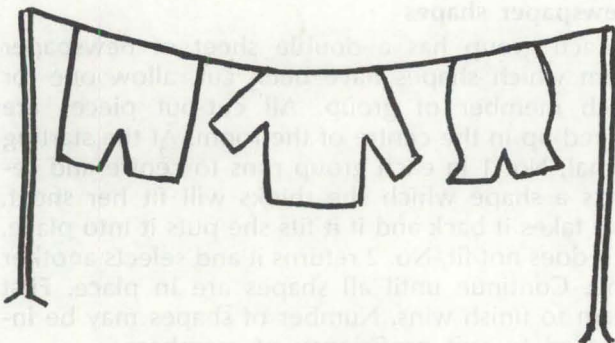
Take several newspaper sheets and fasten each by the upper left hand corner to some stationary point, a wall for example. Each contestant is given scissors and instructions to cut the newspaper so that it will become a long strand reaching across the room. The first one to make her strand reach the other wall is the winner. If played in teams each member is given one minute cutting time. Scissors should be left near paper for next player.

Sculpture

Supply pins, paper and sticky tape or string. Allow the girls to choose whether they want to work alone or with others. A group could work towards one theme such as a zoo, a museum diorama or a scene from a story or play.

Clothes lines

Each group erects a clothes line, members tear out articles of clothing from newspaper and hang them out!



Headlines

Cut out headlines from the papers, give one to each group who have 3 minutes to **make up** a story to suit it.

Discussion starters

a. Group choose a position from the employment columns which appeals to them. Can it be associated with a law? Does it suggest an interest badge or service project? Can it help the girls to understand more about different types of work and what they entail?

b. Give each group a recent newspaper, a red and a black felt pen. Members circle articles which show the keeping of a guide law with red pen and the articles breaking a guide law with black pen. Groups can compare and discuss findings. See that girls are alert to the fact that one article might illustrate both the keeping and the breaking of the same law.

Pack a suitcase

Give each group same size box (not too large) for a suitcase. Members tear out items they would need to take on a weekend visit — to a farm, the beach, the snow etc.



Equipment for indoor hockey

Sticks and balls can be made from newspaper.

Mixed up newspapers

For this you need a number of old but complete newspapers. Mix up pages thoroughly and give a heap to each contestant. On signal to commence each must put the pages back in order and neatly fold paper in half.

Follow the Reader

Give each group a copy of the same newspaper. Start reading from your paper. Group joins in as it finds the same passage, continue until all groups have found it. Counters can be given, three to the first, two to the second, one to the third to join in.

Thrifty shopping

Each group is given a newspaper and finds an advertisement for something of good value for money and one for something of doubtful value.

International news

- Groups find articles about a Commonwealth country; or
- Find news from other countries, cut out the name and place it in the appropriate position on a world map.

Who is that?

Cut out pictures of well known people then cut out the face only — leave the hair. Players try to identify the faceless one!

What are they doing?

From fairly recent newspapers cut out people and figures, removing anything that indicates what they are doing so that the players can guess, or remember if they have read their newspapers well.

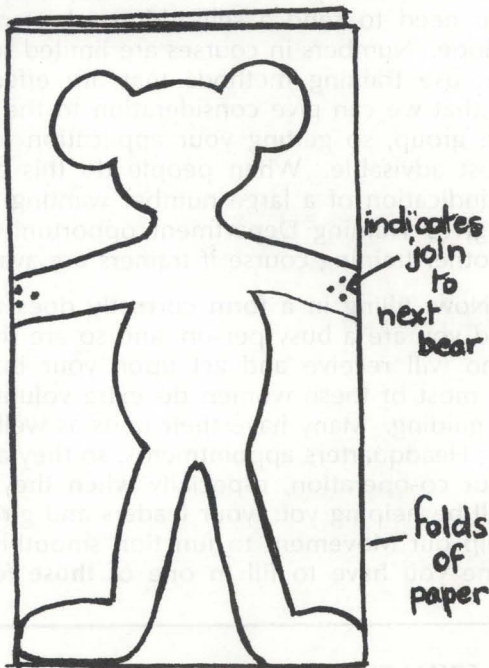
Fanning the Fish

From small newspaper sheet each player tears out shape of fish. From another sheet a fan is made — only one is needed for each team and this can be a co-operative effort.

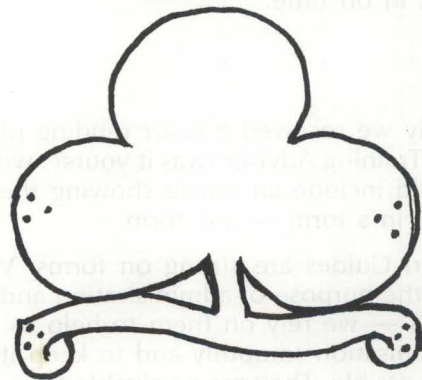
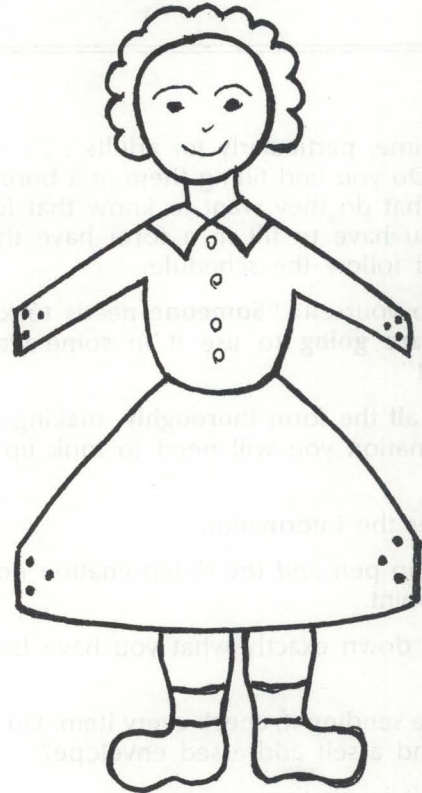
Game: At one end of playing area a "pool" 60cm across, made of rope, at the other end of area the teams form. On the word "go" the first player fans her fish in to the pool. She then returns to her team and passes the fan to next player and so on. If anyone causes a fish already in the pool to "swim" out she must fan it back in. First team to have all their fish in the pool are the winners.

Paper folding and cutting

1. Take a sheet of newspaper, fold over four times (to make double quantity fold over again in two).
2. Make a template by outlining a bear, doll, Christmas tree, Guide badge etc. on cardboard and cut it out.
3. Use template to trace figure onto folded newspaper, make sure base of the template is at bottom of sheet.
4. Cut out with dots at fold to ensure continuity of cut-outs.



Other suggestions include doll, brownie man, trefoil, Christmas tree.



MORE FUN WITH PAPER

This time, particularly for adults . . . yes, **those forms!** Do you find filling them in a bore? Do you say, "What do they want to know that for?" Next time you have to fill in a form have this beside you and follow the schedule.

1. Say to yourself: "**Someone** needs to know this, they **are going** to use it in some way, it has **value!**"
2. Read **all** the form **thoroughly**, making a note of information you will need to look up — dates etc.
3. Gather the information.
4. Take up pen and the determination not to miss one point.
5. Write down exactly what you have been asked for.
6. Before sending it, check every item. Do you need to send a self addressed envelope?
7. Send it in on time.

* * *

Recently we received a heart rending plea from a Region Training Adviser (was it yours?) who asked if we could include an article showing the correct way to fill in a form — any form.

The Girl Guides are strong on forms. We have them for the purpose of administration and arranging events — we rely on them to help us run our large organisation smoothly and to keep it as personal as possible. They are a valuable form of communication.

* * *

Take another look at the 1976-77 Annual Report of the Victorian Girl Guides Association — that attractive book telling the story of a year's history. That was compiled from the **correct** and **adequate** information **you** gave in time for Commissioners, Advisers and Secretaries to read and use.

When the information is supplied or is late being received a great deal of time is wasted by office staff and voluntary people — a feeling of panic builds up as the deadline for the printing draws near!

Next time you apply for a training would it help if you knew what will happen to your form? . . . The Region Training Adviser checks it carefully to see that you have applied for the right training and that you have the necessary experience, this latter point applies especially to people applying for Stage 1 Leadership Courses. She then takes off the information that will help trainers plan their programme to suit your requirements — they really do want to know your name, religion, experience, leadership role and **requests** for training topics. The Region Training Adviser needs to know your address, your preferred name, so that you will be happy with your name tag and the way people address you at the training. Attendance rolls are made and acceptance cards issued, which is why you need to send a self-addressed, stamped envelope. Numbers in courses are limited so that we can use training methods that are effective and so that we can give consideration to the needs of the group, so getting your application in early is most advisable. When people do this and there is indication of a large number wanting to attend it gives Training Department opportunity to plan another training course if trainers are available.

Now, filling in a form correctly does take time and you are a busy person, and so are the people who will receive and act upon your information — most of these women do extra voluntary work in guiding. Many have their units as well as holding Headquarters appointments, so they appreciate your co-operation, especially when they, in turn, will be helping you, your leaders and girls. Please help our Movement to function smoothly — next time you have to fill in one of **those** forms . . .

FROM THE FOUNDER'S PEN:



Rowan did his duty, kicking the IM out of the word IMPOSSIBLE. Any fellow who acts like that is certain to get on.



Thought for the Month

"Always behave like a duck — keep calm and unruffled on the surface, but paddle like the devil underneath."



The cheerful smile above belongs to Mrs Margaret Pennington, our Local Association Adviser. Since she stepped into this newly-created position nearly two years ago, Mrs Pennington has met many hundreds of Local Association members, but there are still some who ask, "What does our Local Association Adviser do?"

In answer, here is a sample from her diary so far this year:

- February:
 - 24th-27th: Commissioners' Conference.
 - March:
 - 9th: Burwood Local Association meeting (speaking).
 - 14th: Wrapped "Matilda" with her Local Association (Kew).
 - 29th: East Reservoir Local Association (speaking).
 - April:
 - 4th: Broadford Local Association (speaking).
 - 6th: Korumburra Local Association (speaking).
 - 8th: Fairfield/Alphington Sausage Sizzle.
 - 10th: Bright Local Association (speaking).
 - 11th: Beechworth Local Association Training Day.
 - 17th: Kingston Heath Local Association (speaking).
 - 20th: Monbulk District Annual Meeting (speaking).
 - 24th: Yea District Annual Meeting (speaking).
 - 27th: Keysborough District Annual Meeting (speaking).
 - May:
 - 2nd: Rochester Local Association Training Day.
- Basically, Margaret is "just a Mum" from Kew Local Association with a daughter in Ranger Guides. She dons a uniform (it saves her clothes) and goes out to encourage and assist all Local Associations in whatever way she can, leaving at home a very understanding husband and family.

The Hall That Waste Built

Members of Lalor Local Association present at the February meeting were thrilled to hear the Treasurer report that the final payment of \$106.09 had been sent to Headquarters Building Pool. Their Guide Hall, an ex-army hut which had seen duty at a bowling green, was purchased, shifted and renovated in 1971, thanks to the dedication of their Region Commissioner, Mrs E. Indian, and a sub-committee of interested parents. Money to repay the loan was mostly raised by the sale of clean rags and newspapers, although every other avenue of fund-raising known to Local Associations was also tried. Special thanks go to the Marshall and Smith families, who have put countless hours into the collection and disposal of the mountain of rags and papers over the years. Brownies, Guides, Ranger Guides, Leaders, District Commissioner and Local Association members are all thrilled to have their very own hall instead of being scattered throughout the district as before.

Re-Use of Egg Cartons

A circular has been received from the Egg Board stating that one-dozen egg cartons are NOT to be re-used for a variety of reasons connected with packaging regulations and the dating method. The section on contamination bears quotation:

"Most egg cartons are highly absorbent and can take in bacteria and other forms of contamination. Leakage from cracked eggs can become infected and cartons accumulated in cupboards and garages can absorb moisture and attract insects and vermin."

The Board advised recycling of cartons through the following paper manufacturing companies — Australian Paper Manufacturers Ltd. (480 1677), and Smorgon Consolidated Industries (314 8611).

Rail freight concessions are available (see March "Matilda", back page).

RECIPE CORNER

Lemon Curd (1½ lb.).

12 oz. (375g) castor sugar, 4 oz. (125g) butter or margarine, 4 lightly beaten eggs, 4 lemon rinds (grated).

Melt all these slowly in a heavy saucepan. Add juice of 4 lemons and bring slowly to the boil. Cook gently for 3 minutes, stirring all the time, until thick and smooth. Put in dry jars. Keeps in refrigerator for 3 months if the family allows it to stay there!

* * *

Please send contributions for this section to Mrs W. Pye, 31 Kerferd Street, East Malvern, 3145.

RANGERING AROUND

RANGER SECTION DINNER

VENUE: The Hotel Australia, Collins Street, Melbourne.

WHEN: Saturday, 8th July, 1978.

WHO: Ranger Guides, Rangers and Ranger Leaders.

TIME: 7.00 p.m.

COST: \$9.50 per head (includes pre-dinner drinks)

DRESS: Uniform.

Application form will be with May circulars. Come for a friendly, warm evening, meet friends and enjoy a delicious three course dinner. Any enquiries to Mrs Heather Barton (232 1098).

"TAPESTRY"

"Tapestry" is the property left to the Girl Guides Association for the use of the Ranger Section by the late Lady Ann Rylah, a former Ranger Adviser. It is a beautiful property consisting of 66 acres of lovely bushland, with a creek running through it. The property is at Strathewen on the edge of the Kinglake National Park, and is approximately 12 miles from Hurstbridge. It is ideal for light weight camps, and there is a wet weather shelter and ablution block, the Panda Hut and the House.

Latest "NEWS" from "Tapestry" is that the property is looking neat and tidy after a recent working bee when we had the help of Rovers with chain-saws to clear away dead and fallen trees.

The exterior of the house is nearly all repainted, but the interior is now waiting to be painted.

Grass around the house was cut prior to the fire season, and a very small band of regular workers does its best to keep everything in order, however they welcome offers of help.

If you would like to join a working bee why not give Miss M. Owen a ring on 45 3657? Helpers can be friends and relations as well as Ranger Guides and Rangers.

Visits can also be arranged for interested members and friends.

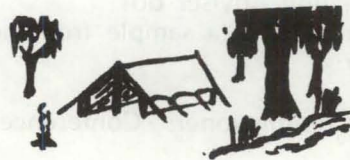
F.O.C.U.S. RANGER GUIDE LEADERS CONFERENCE

On Saturday, 8th July, 1978, at Y.W.C.A., Elizabeth Street, Melbourne. Do not miss this wonderful opportunity.

Application forms with May Ranger circular.

NEW SOUTH WALES RANGER MOOT

17th-18th June. If you are interested in attending Rangers please telephone Jenny Morrison now at 337 9709. (Ranger Guides please contact Mrs Twist).



FLINDRAFARI

This exciting tour to the Flinders Ranges — 27th August to 9th September — has a few vacancies.

Rangers who are interested, please telephone Betty Knight at 45 2531 for details. Guiders are welcome to apply too.

5th AUSTRALIAN VENTURE — SOUTH AUSTRALIA

Application Forms are now available at Girl Guide Headquarters.

Please send stamped self-addressed envelope to Secretary to Advisers. Applications of all Ranger Guides and Leaders for this event must be returned to the Ranger Adviser by 30th May, 1978.

INVESTITURE IN THE RANGER GUIDE SECTION



My Special Responsibility . . .

All of us who are Ranger Guides or Rangers have made this commitment, in many, or probably most cases, in front of our friends — other committed members of the Girl Guide movement.

What does it mean to be an invested and committed member of the Ranger Section of the Association? Is it different from being a Brownie Guide, or Guide, or Commissioner, or Leader, or Local Association member? If it is, what is that difference? What is that special responsibility that we have promised to carry out to the best of our ability?

To render service by taking this promise into a wider world really does commit us to something quite important.

Firstly it assumes that we are totally committed, still, to the Promise and Law which we may have first promised to follow as a Brownie Guide. Then it assumes that we are not one night a week members, but that we are dedicated to live out our promise 365 days a year.

Our membership of the movement as Brownie Guide or Guide has prepared us, in so many ways, to be able to give service. We are trustworthy, loyal, courteous, responsible as well as helpful and friendly members of the society to which we belong. We are efficient, well trained in any number of skills, and we are eagerly looking forward to ways in which we can use those qualities which we have developed as members of the Association.

How then can we put all this into practice within the context of the Ranger Section?

The wider world really starts at home. That is, in our homes, or within our own unit.

All the things we have promised are to no avail if we do not take the responsibility seriously ALL THE TIME.

Always coming to meetings on time, dressed neatly in uniform or camp uniform as the activity requires; always sending an apology, preferably written, if we cannot attend, or applying for leave of absence, if the absence is going to be a lengthy one; showing friendship, courtesy and caring towards all members of the unit — girls and leaders alike; always carrying out responsibilities to which we have been elected, or assigned, or volunteered, to the best of our ability — on time, efficiently and with patience, if needed.

Likewise, in our home environment, we must continue to "render service". I like to consider the "Wider World" as any situation outside myself. In other words, the wider world is any situation which involves me with another person, or for that matter, animal, object, or situation. This means that I should, in any situation whatsoever, make sure that I am being of service by putting my understanding of the Law and Promise into action.

What is so different, now, from when I was a Guide, you might be saying. Let us put it into context. At present we have developed, in Victoria, a decentralised system of organising Ranger Section activities. This means that each unit must take the responsibility for electing a representative on the Ranger Guide-Ranger Region Council; that member has to take the responsibility for always representing her unit by attending any monthly meeting (an apology or another person in lieu is not really you) and both reporting back and bringing ideas forward. While you were a Guide it was acceptable for you to say "I am too busy", "I have too much homework", "I cannot be bothered tonight". After all, you could still be carrying out your Promise and following the Law, to the best of your ability. Perhaps you "fell by the wayside" often, but you were still doing your best.

Now, however, you have a commitment to "... render service, by taking this promise into a wider world". And that wider world is any commitment you have made which involves another. Therefore it is your extra special responsibility that you do not let down the wonderful organisation of which you are a member. You make sure that, in every way, you live up to the promise you have made. That is, the commitment you have made: never to "let down" or inconvenience any other person. A commitment which carries with it a more mature atti-

tude now that you are a "Ranger" because you have made it your special responsibility.

Yes, you will sometimes falter, but the difference now is that you are not only responsible to yourself, or your family, or your unit, but also to the wider world.

How is this different from those members who hold responsible adult positions in the movement. These people have taken on a position of responsibility, quite knowingly, understanding that this sense of responsibility to the others in their charge is part of the role they have entered into. Naturally some do this more successfully than others, but all have taken on a position of responsibility and commitment by taking on the position of Leader or Commissioner or whatever.

You have moved on from the more carefree days of being a Brownie Guide or Guide, with, nevertheless, its own responsibilities and commitments, and you have not yet taken on the complete responsibility for others. However, it is something like a "halfway house". You have made a public commitment to take both your responsibilities seriously, and your promise into the "wider world" and so you will now discover that it probably takes quite an effort to "do your duty" when you would rather be doing something else. But, unless you do, the whole Ranger Section — both Ranger Guides and Rangers, will be in danger of collapse. As you used to say in Guides — "On the strength of each link in the cable, dependeth the might of the chain, Who knows when thou mayest be tested, So live that thou bearest the strain".

Rangering is fun, it is exciting, there are new people to meet, new challenges to be met, new skills to be learned, and new relationships to be developed, both within your unit, the Association and the world outside. Make the most of each, but to get the most, in terms of development and personal growth, do remember

Your special responsibility . . . is to render service by taking the promise you have made into a wider world.
J.M.P.

RANGERS ABROAD

(Continued from Page 295)

Our six weeks abroad proved an exciting and educational holiday. Thanks to the Guide Movement we feel we were able to gain more than just a superficial view of the lifestyles and attitudes of our Asian neighbours.

—PATRICIA CULLEN
BETTY VICKERS
JANETTE AUCHTERLONIE
JENNY BURGESS
JULIE MOFFAT.

P.S.: The lost pack did finally turn up — on the second-last day of our trip.

STATE-A-THON ACTIVITIES



Maroondah Region Rangers had a bike-a-thon — Nunawading to Pound Bend, Warrandyte.

Up hills, puff, puff — PUFF! and down hills — whee!! Great fun — those who could ride — rode. Those like our Mitcham Extension Rangers, who preferred to walk — walked.

—H.C.



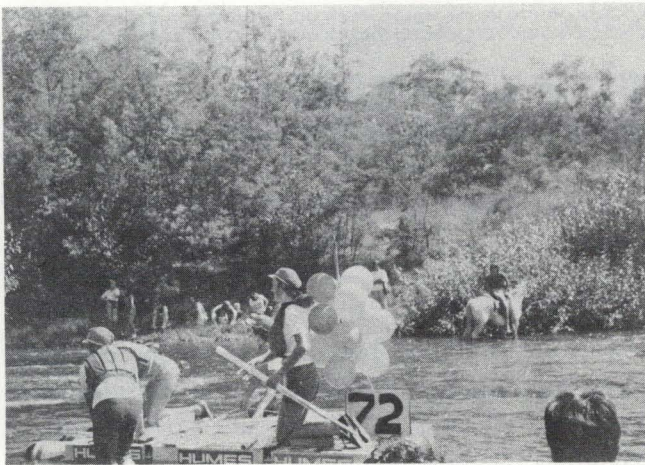
Ocean Grove (Elouera) Rangers held a badminton-a-thon. Play started at 11.00 p.m. on Friday and continued until 11.00 p.m. Saturday.

Each girl played for one hour and then had one hour rest. Cassette music helped to keep everybody awake while playing and to relax while resting!

At the end of the 24 hours the hall looked like a chicken plucker's paradise — we wrecked at least a dozen shuttlecocks and lost several in the attic.

With 90 Ranger-badminton hours on record we were delighted with the \$247.00 raised.

—V.J.W.



THE GREAT RAFT RACE

With great enthusiasm East Doncaster Ranger Guides decided to enter the Great Raft Race on the Yarra River, proceeds in aid of the Royal Children's Hospital. There were about 180 entries.

Raft building commenced early after the Christmas holidays and with help from parents and sponsored by Humes Limited our raft was soon ready for testing. Wearing life jackets we pushed off from the banks of Auravale. . . . It floated! Trying different combinations, we picked four suitable and daring crew members.

Finally the big day came. "Timbarra", our leader, Jenny, Helen and Brownie leader, Sue, balanced the raft, checked final decorations (mainly blue and yellow) and we reached the starting line in one piece.

The rest of our unit was there to cheer us on as flour bombs, rotten tomatoes and a fire hose pelted us as we began our long, treacherous journey.

Overtaking many opponents we came to our first horror obstacle — sharp rocks, overhanging trees, swirling water — our first rapids. We abandoned the raft and managed to drift through, gaining a few bruises.

A lot of water later and spectators still cheering us on, we reached the second-last rapids, where we were sandwiched between rocks and a collapsing raft. Freeing ourselves, and minus part of our raft, we continued, tired and aching all over, to the dreaded last set of rapids.

Thrown upon rocks our raft, disappointingly, began to ship water. But the sight of a rival raft gaining on us spurred us on to swim ours across the line to victory.

It was a great event which we will remember for a long time.

—HELEN, LEGG,
JENNY STAINKAMPH,
East Doncaster Ranger Guides.

Encore' 78

Entries have now closed and we hope that all participants are enjoying practising their items. Entrants are being contacted regarding dates of area heats when items will be judged — these are to be held throughout the State during May and June.

The Sections which apply to all categories as laid down by the Australian Committee are:

- (a) Singing — with or without accompaniment,
- (b) Dance
- (c) Drama — play, puppetry, verse speaking, mime, recitation,
- (d) Instrumental.

The Australian Committee has also laid down the following and these should be noted by all participants:

- (1) The following time limits (which vary from those published in April "Matilda") apply — 4 minutes for musical items, 7 minutes for other items. The time limit must be strictly observed.
- (2) The Combined Section may have up to 8 uniformed members in each group.
- (3) "Solo" Sections in each age group now include groups up to six in number (for Guides, the group should not exceed the patrol number).

The State Final will be held on Saturday, 22nd July, at the Malvern Town Hall, and we hope non-participants will come to this important function to help provide an appreciative audience for all our talented performers.

In the meantime, we look forward to seeing you all at the area heats.



GUIDE SECTION NEWS

May is here and 146 Patrol Leaders throughout Australia are packing in preparation to leaving for **Jumbunna '78**.

Does your Company know the girl who will be representing your Region?

Have you made arrangements to meet her afterwards so she can show and tell you about the Gathering?

Are you all going to Ballarat on 20th May for the **State Campfire** (7.00 p.m. to 9.00 p.m.). April "Matilda" had the details. To help us know the likely numbers, could District or Divisions leave a message for me at Headquarters indicating the numbers expected to attend from your area?

May is the last presentation of **Guide Section Queen's Guides** at Government House. Over 170 girls will receive their certificates, so it will be an impressive sight. I would like to thank those Local Associations who have, in the past, provided the girls, their Guiders, and country parents with morning tea after the ceremony. 13th May will be the biggest task ever, and Chelsea Local Association will be assisted by Canterbury Ranger Guides — an appreciated inter-section link.

A few questions have been asked about the **changes in badge syllabi** and their effect on girls who had begun the badge or service flash in 1977. Provided the badge or service flash is completed by June 1978 the girl can complete it on the 1977 syllabus.

Recommendations for change or revision of badge syllabi are submitted by States each three years. States consider these and a vote is taken. The result is that in favour of which the majority of States voted. Guides or Guiders who feel there should be change or revision can write to me and give details as to why they feel these are necessary.

We would not be able to take actions on their suggestions until 1979-80, but would consider their value and decide if they should go forward as Victoria's recommendation.

Olave Patrol Challenges are progressing well and many patrols have reported their success with the first, and are now working on the second challenge. Please remind girls that both challenges have to be completed and reports sent to me by 29th September if they are to be eligible to attend the third challenge Field Days on 26th or 27th October.

Promotion Month is July. Have you started to develop your plans? More ideas will be in June "Matilda" — but as an encouragement I am pleased to announce our slogan —

GET GOING — GET GUIDING.

—Yvonne James.



OTWAY REGION CAMP "RUSH"

In a surprise attack, bushrangers held up Maria and Charles Hardcastle at Camperdown recently. Mr and Mrs Hardcastle arrived unexpectedly at the tent-town in a Spanish coach drawn by two horses and accompanied by a coachman and footman.

The famous pair, admirably dressed in green and gold gown and bonnet, and a green suit and top hat, were in fact former Region Commissioner Mrs J. Sartori and Region Camp Adviser Mrs M. Bell.

Later the "Wild Colonial Boy" arrived and did battle with Troopers before delivering Easter eggs to surprised Guides.

The event was Camp "Rush", attended by 170 Guides from Otway Region and 31 leaders and Army and Search and Rescue instructors Joe Lavery and Len Porter.

Sunday saw more than 500 visitors on the "gold-fields" at Talindert, with everyone in 1878 costume . . . a truly magnificent sight.

At the Welcome Ceremony the Union Jack, World Flag and the Camp "Rush" flag were unfurled to the singing of the National Anthem, Advance Australia Fair and the Australia Day song (words to which are printed in April "Matilda").

Our host, Sir Chester Manifold, visited camp and spoke to several Guides and leaders. Later a thank-you gift was sent up to the homestead by couriers from 5th Colac Company.

On Sunday the campers were shocked by the arrival of Joe with his arm severed at the elbow.

He managed to gasp that a dreadful accident had occurred, and Guides were quickly on the scene to "rescue" and treat the terrible "wounds" of the injured.

Region Ranger Guides were marvellous "victims" and suffered the attention of their rescuers with great patience.

"Swap meals" were great fun and the last meal saw almost the entire camp out "visiting".

One little Guide who enjoyed her first camp was only able to do so by the generosity of a local business-man who lent a generator for the event. She required power to operate an electric breathing assistance device twice daily and, under the supervision of Joe and Len and the First Aider "Doc" Gaye Lavery, this Guide was able to participate in activities hitherto unavailable to her. Guider Heather Bramich of Terang supervised

spinning, weaving, dyeing and soap making, and an obstacle course was popular all week-end.

First Aid, orienteering, camp scarf designing, gadget building activities were rewarded with gold nuggets from the Camp "Rush" Bank, where the huge Welcome Stranger nugget was on display.

The neighbouring "police station" had a gallows for law breakers and the miner George and his wife Mildred and infant daughter Clementine welcomed visitors at the gate beside their windlass.

A fully equipped "apothecary" dealt with minor ailments under a fully-trained staff, while Lorna's "general store" stunned local shopkeepers by ordering daily such items as thirty-four loaves of bread, sixty-one litres of milk and twenty bags of ice!

* * *

Despite the large numbers of campers and visitors the site was left spotless.

It gave one a feeling of awe (and great pride) to survey the scene the day after the camp and find absolutely no trace of four days' habitation.

—ANNE L. FRASER.



CAMPER VAN

Are you unable to take your girls camping because you have not yet managed to do a Campcraft Course.

The Camper Van is still available for use by leaders who have no camping qualifications.

Apply to your Division Camp Adviser for application form and take fifteen of your Guides to camp. A licensed Guider will attend with the van.



PACK HOLIDAY

Brownies of 3rd Scoresby Pack went to Toole Pate Lodge for Pack Holiday. It was a short ride but it was fun.

We helped carry in cases and sleeping bags and had a look around. It was nice.

Dinner was great and sleeping in a top bunk was fun.

In the morning I had to cook breakfast and later we made an octopus and little gum nut brooch.

That night after tea we had a sing-song around the fire.

Pack Holiday was fun, especially at Toole Pate Lodge.

—AMANDA FASHAM,
3rd Scoresby Brownie Pack.

FROM MONBULK TO NAR-NAR-GOON

2nd Monbulk Brownies visited Brownie friends in Nar-Nar-Goon.

On Saturday we were shown over the cheese and butter factory and after lunch at the fauna park we were taken to see a dairy farm. We watched cows being milked and saw a new baby calf, which was lovely, and later everyone enjoyed a hay ride.

On Sunday we had Brownies' Own and a barbecue and walked to the top of a mountain.

Everyone had an enjoyable weekend and we made a lot of new friends.

—2nd Monbulk Brownie Pack.

LADYBIRD'S PARTY

The party was all about Ladybird (Mrs Mavis Needs), who has been in Guiding for 20 years.

We gave her flowers and a cake with yellow icing, flowers and badges on it. We acted a play for Ladybird and while people had a talk to each other we washed the dishes and went home.

—KAREN FRANKEL,
1st Inglewood Brownie Pack.

A NOVEL OUTING

If your unit is interested in the sea and ships and our early history you may care to take them to the "Polly Woodside".

Telephone Miss Kibblethwaite at 690 1170 or write to P.O. Box 504, South Melbourne, 3205 for further information.

EVER BUSY BROWNIES

BROWNIES VISIT "DAREMIN"

We visited "Daremin" elderly ladies' home. All the Brownies brought a posy for the ten ladies who live there and some afternoon tea. We made them each a card and bookmark, which greatly pleased them.

We were shown around the home and then met the ladies. After a chat one of the Brownies did a Tongan dance and we all sang. Then we served afternoon tea.

—MICHELLE GILCHRIST,
2nd Frankston Brownie Pack.

TWENTY YEARS FOR BROWN OWL

Thinking Day was an important day for Brownie leader Miss Helen Storey.

It was 20 years to this day that the first Boort Brownie Pack meeting was held.

After the Thinking Day Service held at the Boort Uniting Church, Boort Brownies, Guides, Ranger Guides and Guiders, plus their mothers, went to Nolen's Park where they gave a surprise barbecue lunch in honour of Helen.

Before lunch, the District Commissioner, Mrs R. Rosenow, presented a 20-year Long Service Badge to Helen. Brownies then presented her with a birthday cake in the shape of an owl.



BRASS RUBBING

Discover Brass Rubbing among medieval knights, lords and ladies.

Facsimiles of English monumental brasses brought to your unit meetings and girls shown the art of brass rubbing.

Enquiries — Margaret Angus, 16 Ingrid Street, Scoresby. Telephone 763 6811.

NOTE — Not available on Monday nights.



NEWS FROM THE "TREFOIL" GUILDS

Trefoil Guild members have been particularly busy since the beginning of the year. In February we joined the Baden-Powell Guild in a residential week-end for Thinking Day-Founder's Day. This was held at Jumbunna Lodge, Launching Place, and was a very successful week-end of fellowship and idea exchanging.

For their February meeting **EASTERN SUBURBS** Trefoil invited Lady Price, Chairman of the World Committee of the World Association of Girl Guides and Girl Scouts, to be their speaker. Lady Price firstly spoke of the Memorial Service at Westminster Abbey for the late Chief Guide, Olave, Lady Baden-Powell, and then of the World Association, how it started and how it has grown.

CARINE Trefoil held their Thinking Day meeting at the home of Mrs Marj. Lane, who had arranged for a telephone call to be made to Carine, Lady Baden-Powell, in London. Unfortunately the elements were against us and although operators tried four times they could not make contact. All present signed a card with Thinking Day Greetings to be sent to Lady Baden-Powell, who was probably just as disappointed as we were that contact could not be made.

This month **1st BALLARAT** held their Annual Meeting and welcomed visitors from **3rd BALLARAT, CLUNES** and **BANONGILL** Trefoils and Commissioners from Maryborough interested in starting a Guild in their area. A report on the Thinking Day Luncheon held at Lingbogol was made. The money raised is to go to a new kitchen on the camp site. I spent a busy but delightful twenty-four hours with 1st Ballarat members, meeting people and being shown the beautiful gardens.

Another Annual Meeting was at **ARGANA** Trefoil, Deer Park. When I think of Argana I picture place mats and tea towels, as they are the busy people who have had these goods printed. Another of their activities is crocheting rugs for elderly and sick folk. This year one was given to a very old lady in Poland. In the five years they have been working, 66 rugs have been distributed. A big problem is wool — has anyone any scraps of wool they could pass on to Argana to allow them to carry on with this project? If you have, you could send them to Mrs Heather Addicott, 29 Tucker Street, West Footscray, 3012, and they will be gratefully received.

To raise funds for the Retirement Homes Scheme the **TOWN AND COUNTRY** Guild will hold a Jumble Sale at St. John's Church Hall, Toorak, on Thursday, 25th May. (See April issue.)

A list of committees or organisations on which their members serve, Red Cross, Mayoral Committees working for charities, Hospital Auxiliaries, Citizen's Aid Bureau, National Trust, Country Women's Association, Church Committees, Colleges of Advanced Education, Save the Children Fund, Community Aid Abroad, Justices of the Peace, Drivers for Red Cross or Meals on Wheels, shows how they carry the spirit of the Promise and Law into the community.

They support Guiding by acting as Badge testers or Trainers, serving on campsite committees, on Headquarters committees and the Extension Auxiliary. One member still runs a Guide Company and a Brownie Pack, while their President is a very active member of the Retirement Homes Committee.

Please make a note in your diaries — 7th October, 1978, is the date of the Trefoil Guilds' Annual Meeting at Headquarters.

—M.S.

BACK TO GUIDING IN TERANG

Back to Guiding for Terang District will be celebrated over the long week-end, 3rd-4th June. This is the Golden Jubilee for Terang district and all former members and Local Association folk are cordially invited to participate in the celebrations. If you know of anyone interested please let our organisers know so that an invitation may be sent.

WANTED . . . the use of old uniforms, badges, records, photographs for a display of Guiding history.

Further information from Doreen Kline, Audrey Worland or Anne Fraser of Terang.

Photographs in this issue by courtesy of —
H. Cathcart, P. Dryden, L. Richardson, J. Stainkaph, V. Surry, G. Thomopoulos.

KNOW YOUR REGIONS

YARRA VALLEY REGION

Yarra Valley Region is, numerically, one of the largest regions in Victoria. It is an interesting mixture of closely-settled suburbs, industrial areas, new residential sub-divisions and countryside with farming and related industries.

From Kinglake in the north, eastward to Diamond Creek, with the Merri Creek forming the greater part of the south and west boundaries, the Yarra River penetrates very little of the region, and perhaps "Plenty Valley" would have been a more appropriate name.

A great deal of history is contained in the region — starting at Mt Sugarloaf and the National Park, to the Toorourrong and Yan Yean Reservoirs in the Mitchell Division; water from Yan Yean being the first to enter taps in Melbourne homes when a valve was opened at the Exhibition area on the 31st December, 1857. Within the Yan Yean reservation are the remains of "Bear's Castle", a mud and timber edifice which one of our pioneers had built. In the early 1850's many of the then-new roads had tollgates, and timber cutting was a very important project, evidence of which still remains in some parts of the mountains in the form of "tramlines" for horsedrawn timber "jinkers". Much of the region is studded with bluestone homes and public buildings, the stone for which was hewn from many and widespread areas, giving an idea of the workmanship of earlier years. Under a National Trust rating also is a stable bearing the name of a famous racehorse, Redleap, adjoining one of Melbourne's newest suburbs, Mill Park.

Findon Division, taking its name from the first Hunt Club in the State, has within its boundaries the original settlement of "Germantown", now part of Thomastown, which was settled by German nationals seeking escape from persecution, and the 100-year-old Lutheran Church and cemetery is witness to this period.

History tells us that the home of the present Eltham Division Commissioner is situated near the slight rise where bushrangers robbed Melbourne-bound coaches as they made their way more slowly uphill, then escaped into surrounding bushland. Eltham is also the centre of a very strong artistic influence, having Montsalvat Artists' Colony and

many resident artists of all types, and Warringal Division is also historically linked with art from the time of the "Heidelberg School". Historically from early times, mud brick homes were popular throughout this region and today this form of building is again in vogue.

On the banks of the Merri Creek at Northcote, is the site where Batman's Treaty was signed and this is within the boundaries of the Merri Division.

The City of Preston, home of the Preston Division, had its 50th anniversary in 1976, and all local organisations were included in the celebrations, and special badges were made for Guides and Scouts during the festivities.

In 1962, Guides from the Diamond Valley Division, jointly with Korean Guides, were the proud recipients of the Walter Donald Ross Trophy. They received this award for continuous and dedicated work during and after serious bushfires in the area, and the presentation was made by the then Chief Commissioner for Australia, Mrs Buntine, at Eltham. This was the only gathering of the original North Metropolitan Region, of which Yarra Valley is a part.

The region has its own campsite at Wattle Glen which is put to good use by its members and is available to other areas too, for both camping and outdoor activities, and the Ranger property "Tapestry" is within its boundaries. Local campers are also grateful to the Scout Association for being able to use its excellent campsite YABAMAC at Wandong.

The "Big Challenge" within the Region, particularly in the Merri, Findon and Preston Divisions, is "How do we involve the New Settlers' daughters in our Movement?" Until leadership difficulties can be overcome, we can only offer a place on the waiting-list in many areas — hardly encouragement to join, so it is to be hoped that some answer may be found before too long.

Guiding is, comparatively speaking, very young when the age of the area is considered in historic terms, but who knows what the future will bring?

A.C. (and E.I.)

TRAINING CALENDAR

Commissioners and Unit Leaders with the necessary experience are welcome to apply for **ANY** course.

Applications should be sent **prior to the closing date and be accompanied by the Training fee and a stamped self addressed envelope. Early application for all courses is recommended.** Training fee is \$3.00 unless otherwise stated.

Stage 1 Leadership Course

Castlemaine, Weekends 1st-2nd July and 5th-6th August, times 10.00 a.m. to 4.00 p.m. Applications to Mrs B. Whelan, 8 Hope Street, Kangaroo Flat, 3555 by **14th June**.

Euroa, Weekends 17th-18th June and 15th-16th July, times 10.00 a.m. to 4.00 p.m. Applications to the Training Department, Guide Headquarters, by **31st May**.

Geelong, Weekends 1st-2nd and 29th-30th July, times 10.00 a.m. to 4.00 p.m. Applications to Mrs A. Bell, 1 Layton Crescent, Newtown, 3220 by **14th June**.

Headquarters, Thursday, 29th June, 6th, 13th, 20th, 27th July, times 10.00 a.m. to 3.00 p.m. Applications to Training Department, Guide Headquarters, by **8th June**.

Headquarters, Weekends 8th-9th July and 5th-6th August, times 10.00 a.m. to 4.00 p.m. Applications to Training Department, Guide Headquarters, by **14th June**.

TRAINING FULL

Rutherglen, Weekends 17th-18th June and 15th-16th July, times 10.00 a.m. to 4.00 p.m. Applications to Miss H. Smith, 21 Cusack Street, Wangaratta, 3677 by **29th June**.

Trafalgar, Weekends 24th-25th June and 22nd-23rd July, times 10.00 a.m. to 4.00 p.m. at R.S.L. Hall, Contingent Street. Applications to Mrs K. Marshall, 29 Hearn Street, Drouin, 3818, by **2nd June**.

Stage 2 Leadership Courses for Warranted Leaders

Bentleigh, Weekends 24th-25th June and 22nd-23rd July, times 10.00 a.m. to 4.00 p.m. Applications to Mrs P.H.G. Jones, 14 Walker Grove, Cheltenham, 3192 by **2nd June**.

Chadstone, Weekends 1st-2nd July and 5th-6th August, times 10.00 a.m. to 4.00 p.m. Applications to Miss M. Hunt, 8/7 Alcala Avenue, Chadstone, 3148, by **14th June**.

Deer Park, Weekends 17th-18th June and 15th-16th July, times 10.00 a.m. to 4.00 p.m. Applications to Mrs R. Bell, 10 Debenham Drive, St. Albans, 3021, by **29th May**.

Doveton, Weekends 8th-9th July and 12th-13th August, times 10.00 a.m. to 4.00 p.m. Applications to Mrs K. Wilkie, 8 Olive Street, Dandenong, 3175, by **23rd June**.

Geelong, Tuesday 11th, 18th, 25th July, 1st, 8th August, times 10.00 a.m. to 3.00 p.m. Applications to Mrs A. Bell, 1 Layton Crescent, Newtown, 3220, by **23rd June**.

Upwey, Weekends 1st-2nd and 29th-30th July, time 10.00 a.m. to 4.00 p.m. Applications to Mrs J. Huxtable, 93 Orange Grove, Bayswater, 3153, by **14th June**.

Western Border Region, Weekends 19th-20th August and 23rd-24th September. Further information available from Mrs F. Jervies, "Karingal", Hamilton, 3300.

Accent on Leadership Special Subjects for Guiders who have done Stage 2

Think of this as Stage 3 if you like, but it will be different from what you have done at Stages 1 and 2. The main aim by activities and discussion is to help **YOU** as a person — as a leader.

Headquarters, Weekends 15th-16th July and 19th-20th August, times 10.00 a.m. to 4.00 p.m. Applications to Training Department, Guide Headquarters, by **27th June**.

Sale, Weekends 19th-20th August and 23rd-24th September, times 10.00 a.m. to 4.00 p.m. Applications to Mrs M. Frawley, P.O. Box 641, Sale, 3850, by **28th July**.

Oak Park, Weekends 12th-13th August and 15th-16th September, times 10.00 a.m. to 4.00 p.m. Applications to Miss M. McLeod, 3 Glenview Road, Strathmore, 3041, by **21st July**.

Local Association Fact and Fun Day

Headquarters, Thursday, 22nd June, times 10.00 a.m. to 3.00 p.m. Applications and \$1.50 per Local Association to Training Department, Guide Headquarters, by **1st June**.

Pack Holiday Course

Leongatha, Thursday 1st, 8th, 15th June, times 10.00 a.m. to 3.00 p.m. Applications and \$2.00 to Mrs J. Gaudion, 32 Blackmore Avenue, Leongatha, 3953, by **19th May**.

"**Minda Killara**", 7th-8th-9th July, times 6.30 p.m. Friday to 3.00 p.m. Sunday. Note: Fee to be advised. Applications to Mrs P.H.G. Jones, 14 Walker Grove, Cheltenham, 3192, by **21st June**.

Campcraft Training

Doncaster, 14th August from 7.30 p.m. to 10.00 p.m. plus 19th August from 9.30 a.m. to 4.00 p.m. at **Donvale**, plus weekends 23rd-24th September and 20th-21st October and 11th-12th November, times 9.00 a.m. Saturday to 4.00 p.m. Sunday — location and cost of weekends to be advised. Applications and \$6.00 to Mrs F. Ludbrook, 5 Curnola Avenue, Doncaster, 3108, by **26th July**.

Camp First Aid Course

Headquarters, Weekend 12th-13th August, times 9.00 a.m. to 4.00 p.m. Applications and \$1.50 to Training Department, Guide Headquarters, by **26th July**.

Korumburra, Weekend 5th-6th August, times 9.00 a.m. to 4.00 p.m. Applications and \$1.50 to Mrs J. Gaudion, 32 Blackmore Avenue, Leongatha, 3953, by **21st July**.

Q.M. Course

Chadstone, Weekend 8th-9th July, times 10.00 a.m. Saturday to 4.00 p.m. Sunday or 10.00 a.m. to 9.00 p.m. Saturday and 7.00 a.m. to 4.00 p.m. Sunday. Overnight accommodation available in hall. Note: Fee to be advised. Applications to Training Department, Guide Headquarters, by **21st June**.

Special Skills for Ranger Guiders

Headquarters, Weekend 17th-18th June, times 9.30 a.m. to 4.00 p.m. Note: The weekend will include Games in the Ranger Guide Unit; Knots used in Camping and Boating **PLUS YOUR SUGGESTIONS**. Applications, suggestions for inclusion in the programme and \$1.50 should be sent to the Training Department, Guide Headquarters, by **31st May**.

Knotting

Kew, Saturday, 29th July, times 10.00 a.m. to 3.30 p.m. at Scout Hall, Glass Street. Applications to Mrs F. Ludbrook, 5 Curnola Avenue, Doncaster, 3108, by **8th July**.

Pioneering

Laburnum, Weekend 15th-16th July, times 10.00 a.m. to 4.00 p.m. Applications and \$1.50 to Training Department, Guide Headquarters, by **30th June**.

Indoor Camp Permit

Parkdale, Weekend 24th-25th June, times 9.00 a.m. Saturday to 4.00 p.m. Sunday. Salvation Army Conference Centre, Monaco Street. Applications and \$9.00 to Training Department, Guide Headquarters, by **4th June**.

Nature Trailing

Studley Park, Saturday, 22nd July, times 10.00 a.m. to 4.00 p.m. Applications and \$1.00 to Training Department, Guide Headquarters, by **1st July**.

Bushcraft Tour Reunion

Fryerstown — near Castlemaine, 6th-7th-8th October. Note: Husbands and family welcome — private transport — approximate cost \$15.00. Further information may be obtained from Mrs J. Hewett, 1259 High Street, Malvern, or Mrs P. Avent, P.O. Box 81, Aireys Inlet. **Please send a stamped addressed envelope for reply.**

SUMMER TRAINING WEEK 1979

24th-30th January at Britannia Park, Yarra Junction. Suggestions for subjects to be included in the week should be sent to the Training Department, Guide Headquarters, by **21ST SEPTEMBER**.

WIMMERA REGION CONFERENCE

Wimmera sunshine welcomed visitors to the 24th Region conference held at Wedderburn, when the theme was "Change and Progress".

Reports from all parts of the region on camping, international, local association, unit and district activities were interspersed with speakers from Headquarters and items by Brownies and a group of ladies from Wedderburn.

Discussion sessions and a question box again proved popular, as did the delicious luncheon provided by Wedderburn Local Association.

—"KARA".

Except for articles where copyright restrictions are indicated, material in "Matilda" may be reprinted in Guide and Scout magazines without prior permission. A credit line would, however, be appreciated.

THE GUIDE SHOP

NEW ITEMS

- | | |
|----------------------------------------------------------------------------------------------------------------------------|---------|
| Whittling, by Rosalie Brown | \$2.80 |
| A really beautiful book which will encourage even the most inexperienced to produce delightful carvings. | |
| Ideas for Packs | \$1.95 |
| A very useful book, full of ideas for the youngest Brownie to the Pack Guide and Guider working with the Pack. | |
| Brownie Colouring Books, Nos. 2, 3 and 4 .. each | \$1.45 |
| Olave, Lady Baden-Powell, G.B.E., Display Kit .. | \$3.25 |
| (Including 6 photos and Lady Baden-Powell's last message) | |
| Leisurecraft Series — Fun Figures | \$1.75 |
| — Macrame Plant Hangers | \$1.75 |
| — Simple Printmaking | \$1.75 |
| — Macrame Jewellery | \$1.75 |
| Individual or Patrol Trophies — Assorted shapes, wood or plastic, ranging from \$4.95, \$7.85, \$10.60, | \$11.50 |
| Rectangular Plaque Style approx. 4in. x 6in. .. | \$15.80 |
| The Penguin Book of the Bush | \$3.95 |
| Packed with simple and wise suggestions on how to survive and enjoy Australia's most precious natural resource — the bush. | |

OUT OF STOCK BOOKS NOW AVAILABLE

- | | |
|-----------------------------------------------|--------|
| Basics (Replacement for The Blue Pamphlet) .. | \$0.55 |
| Olave Baden-Powell | \$1.00 |
| Brownie Cut-Out Doll | \$1.00 |

SPECIAL PRICE TO CLEAR

- | | |
|-----------------------------------------------------------------------------------------------------|--------|
| Melamine Gift Tray, approx. 4½in. x 6½in. | \$0.85 |
| Design has map of Australia and State emblems — can be used as a butter dish, pin tray or ash tray. | |

WORLD CENTRES TOUR

Only six vacancies are left on the tour of the four World Centres leaving Melbourne on 26th August, 1978.

Public Relations Adviser, Mrs Marjory Lane, will lead the tour.

Itinerary is in March issue of "Matilda" and brochures are available at Headquarters.

CONGRATULATIONS to the recipients of the following:

Wattle Award

Mrs L. Reid, Dimboola.

Guider Long Service

(30 years) Miss M. Nicoll, Rochester.

(20 years) Mrs K.C. Major, Rochester; Mrs B. Hall, Mooroolbark; Mrs J. Capel, Bayswater North.

(10 years) Mrs B.M. Robertson, Hamlyn Heights; Mrs S. Ballard, Ballarat; Mrs E.J. Burt, Werribee; Mrs J. Peachey, Morwell; Mrs G. Lindsey, Montrose; Mrs L. Porter, Colac; Mrs J. McDonald, Inverleigh; Mrs I.J. Phillips, Eaglemont; Mrs D. Chatfield, Burwood; Mrs D.M. Clark, Ashwood.

Combined Long Service

(10 years) Mrs F.G. Currie, Highton; Mrs L. Pricor, Kyneton; Mrs I.J. Bray, Ballarat.

Local Association Long Service

(10 years) Mrs B. Slayford, Rosedale; Mrs J. Moffat, East Preston; Mrs W.R. Hoare, Harcourt; Mrs J. McCarthy, Ballarat; Mrs J. Bowman, Ballarat South; Mrs D. Bowman, Ballarat South; Mrs W. Arnold, Sebastopol.

APPOINTMENTS AND WARRANTS

A warm welcome is extended to the following:

Region Commissioners

Mrs L.F.J. Hillman, Ballarat; Mrs H.C.A. Purcell, Hume; Mrs M.T. Lyons, Barree.

Division Commissioner

Mrs W.J. Llewellyn, Ballarat.

District Commissioners

Mrs K. Bull, Surrey; Mrs R.G. Jones, Robinvale; Mrs R.W. Rose, Nar Nar Goon; Mrs D. Lilley, Dandenong; Mrs K. McLarty, Seymour; Mrs S.M. Whittaker, Thorpdale; Mrs G.E. Dent, Hopetoun; Mrs F. Trippit (Assistant), Tullamarine-Airport West.

Ranger Guiders

Mrs P. Smith, Boronia Rangers; Mrs W.W. Elliott, Sorrento Rangers; Mrs V. Galway, Doncaster Rangers; Mrs J.R. Zakis, East Malvern-Gardiner Rangers; Mrs R.D. Lade, Yarragon Rangers; Mrs M.J. Pawsey, Berwick Rangers; Mrs P. Macdonald, Meredith Rangers; Mrs L. Levy, St. Kilda Rangers.

Guide Guiders

Mrs J. Collins, 2nd Korumburra; Miss L.A. Charleston, 2nd Bairnsdale.

Assistant Guide Guiders

Mrs B.W. Walmsley, 1st San Remo-Newhaven; Miss K. Hockey, 1st Ringwood; Miss E.A. McNeil, 4th South Yarra; Mrs P.A. Terrington, 1st Cranbourne; Mrs G.L. Waldron, 1st Ferntree Gully; Mrs V.M. Foenander, 1st Yarra Junction.

Brownie Guiders

Miss M. Cassai, 1st Mortlake; Mrs R.L. Arnold, 1st Puckapunyal; Mrs R. Murphy, 1st Olinda; Mrs M.P. Haynes, 3rd Korumburra; Miss W.E. Holloway, 1st Allansford; Mrs B.J. Malcolm, 1st Glenthompson; Mrs P. Scattergood, 1st Sunbury; Miss K.J. Crompton, 2nd Ferntree Gully; Mrs M.L. Huckstep, 3rd Ferntree Gully.

Assistant Brownie Guiders

Mrs P. Stindl, 1st Yarra Junction; Miss W. Cunningham, 1st Numurkah; Miss P. Goodman, 4th Doncaster West; Mrs M.J. Davis, 4th Doncaster West; Mrs R.C. Beverley, 1st Parkdale; Miss E.L. Eadon, 1st Kerrimuir; Mrs Van Ryswyk, 1st Korumburra; Mrs B.E. Heesom, 3rd Korumburra; Mrs W.J. O'Neill, 1st Korumburra; Mrs M.J. Starkie, 1st Glenthompson; Mrs D.E. Elston, 3rd Ferntree Gully; Mrs M.G. Weymes, 1st Olinda.

REGISTRATIONS

2nd Greensborough Pack, 1st Greenhills Pack, 2nd Cockatoo Pack, 3rd Sunshine Pack, 4th Caulfield Company, 1st South Merbein Company, Templestowe Ranger Guide Unit, Gellibrand Division Ranger Guide Unit, East Malvern-Gardiner Ranger Guide Unit, Numurkah Ranger Guide Unit, Beechworth Ranger Guide Unit, Research Local Association, 4th North Ringwood Pack, 2nd Koroit Pack, 2nd San Remo-Newhaven Pack, 1st Hawthorn West Pack, 4th Wantirna South Pack, 1st Denison Pack.

RESIGNATIONS AND RETIREMENTS

We acknowledge with gratitude the services given by the following whose Warrants have been returned:

Region Commissioners

Mrs R.A. Stirling, Ballarat; Mrs W.F. Sadler, Hume; Mrs P.C. Miles, Barree.

Division Commissioners

Mrs L.F.J. Hillman, Ballarat; Mrs K. Bence, Manningham Road.

District Commissioners

Mrs H.M. Carson, Surrey; Mrs K. Doddrell, Mordialloc; Mrs H.J. Fox, Newborough; Mrs J. McKerron, Burwood; Mrs S. Watt, Hastings; Mrs A. Liversidge, Niddrie; Mrs M. Zilm, Seymour; Mrs T.K. McMahon, Heathcote; Mrs M.T. Lyons, Yarrowonga; Mrs J. Woolley, Maryvale; Mrs J.L. Crompton, Ferntree Gully.

Ranger Guider

Mrs A. Tomada, Ferny Creek Rangers.

Assistant Ranger Guider

Mrs H. Felstead, Ferny Creek Rangers.

Guide Guiders

Mrs K.J. Russell, 1st Creswick; Mrs J.E. Williams, 4th Templestowe; Mrs K.E. Sherlock, 1st Bonbeach; Mrs R.J. Harborow, 1st Ferny Creek; Mrs N.M. Heather, 1st Lara; Mrs P. Macdonald, 1st Meredith.

Assistant Guide Guiders

Mrs J. Laidlaw, 1st Templestowe; Mrs J. Gardner, 2nd Bentleigh; Mrs M. Stormer, 1st Yarra Junction; Mrs B. Lock, 3rd Doncaster; Miss S. Burrows, 2nd Waverley North; Mrs M.J. Satchell, 1st Bannockburn; Mrs M. Bennett, 1st Inverleigh; Miss S.J. Peart, 1st Lara.

Brownie Guiders

Mrs G.W. Rawson, 1st Gembrook; Mrs K. Cormack, 3rd Reservoir West; Miss A. Freeland, 3rd East Malvern; Mrs U. Malich, 1st Sunbury; Miss L.J. Holloway, 1st Allansford; Mrs N. Townley, 1st North Melbourne; Miss S.P. Drury, 1st Burwood; Mrs J. Ebsworthy, 2nd Stawell; Mrs R.D. Thege, 1st Trafalgar; Mrs R. Bracken, 2nd Yarrowonga; Mrs J.W. Findlay, 2nd Alexandra; Mrs A. Scanes, 1st Narre Warren North.

Assistant Brownie Guiders

Mrs P.R. Almond, 2nd Hawthorn; Mrs G. Cooper, 1st Stawell; Miss S. van Beekhuizen, 1st Bennettswood; Mrs P.S. Cosier, 1st Bentleigh; Mrs P. Ashton, 1st Ringwood; Mrs C. Kiff, 2nd Boronia; Mrs B.J. Ware, 1st Trafalgar; Mrs R. Waller, 2nd Highett; Miss J. Inglefinger, 2nd Trafalgar; Miss W.E. Holloway, 1st Allansford; Miss M. Higham, 1st Yarrowonga; Mrs R.D. Cooke, 1st Meredith.



MRS JOAN MILES

Barwon Region was saddened by the death of Mrs Joan Miles. She had been a Brownie, Guide and Ranger, and was leader of 10th Geelong (St. Matthews) Brownie Pack for twenty-eight years until her death. In spite of her long illness, she was also Treasurer and Booking Secretary of "Mirra-booka" our Brownie Cottage at Ocean Grove; and was a valued helper at the Guide Depot at Geelong.

Over the years, Joan has assisted in 10th Geelong Guide Company, been District Commissioner for Bellarine, Division Commissioner for Bellarine, acting District Commissioner for Geelong City, Assistant Region Commissioner for Barwon Region and a member of Barwon Region Girl Guides Council.

She served on committees of "Bungarra" (our former Campsite at Ocean Grove) and "Ocean Lodge" Brownie Holiday Home at Point Lonsdale. We were delighted when she was presented with the Emu Award in 1976 in recognition of her work.

Guiding was her way of life and we are thankful for her enthusiasm and steadfastness. We will miss her.

M.B.F.

THINGS WE WANT TO KEEP World Environment Day (5th June)

In Australia, the Commonwealth Government is focusing attention on the things we want to keep for our cultural heritage.

That means those things which show us how man has responded to this continent during the long period of Aboriginal settlement and the 200 years of European settlement. They could be historic buildings or streetscapes or aboriginal rock paintings, or simply places which give particular character to an area.

The Department of Environment, Housing and Community Development is producing a booklet and poster and sponsoring a travelling photographic exhibition for the Day.

How about considering what you can do to mark World Environment Day this year? You could:

- Organise a walk, bike ride or tour of aspects of Australia's cultural heritage in your district;
- Hold a public/seminar or film or slide evening to get people thinking about why we conserve things, and what you could keep in your district;
- Plan trips and projects for children highlighting the importance of Australia's cultural heritage;
- Do anything else that is suitable for your district;
- Get people involved; contact your local paper and radio and television station, and any interested organisations. Let them know what you are doing and why.

World Environment Day 1978 is more than just a day. It should stimulate growing awareness of the things we want to keep and help us to understand and value our cultural heritage.

* * *

THANK YOU

Dear Matilda,

May I, through your pages, thank those who were so kind to me after my unfortunate accident at the Commissioners' conference.

I received sympathy, encouragement and practical help from friends whose names I do not know and whose faces I am not sure I shall recognise again.

Thank you all very much.

—MOLLY BROWNLESS.