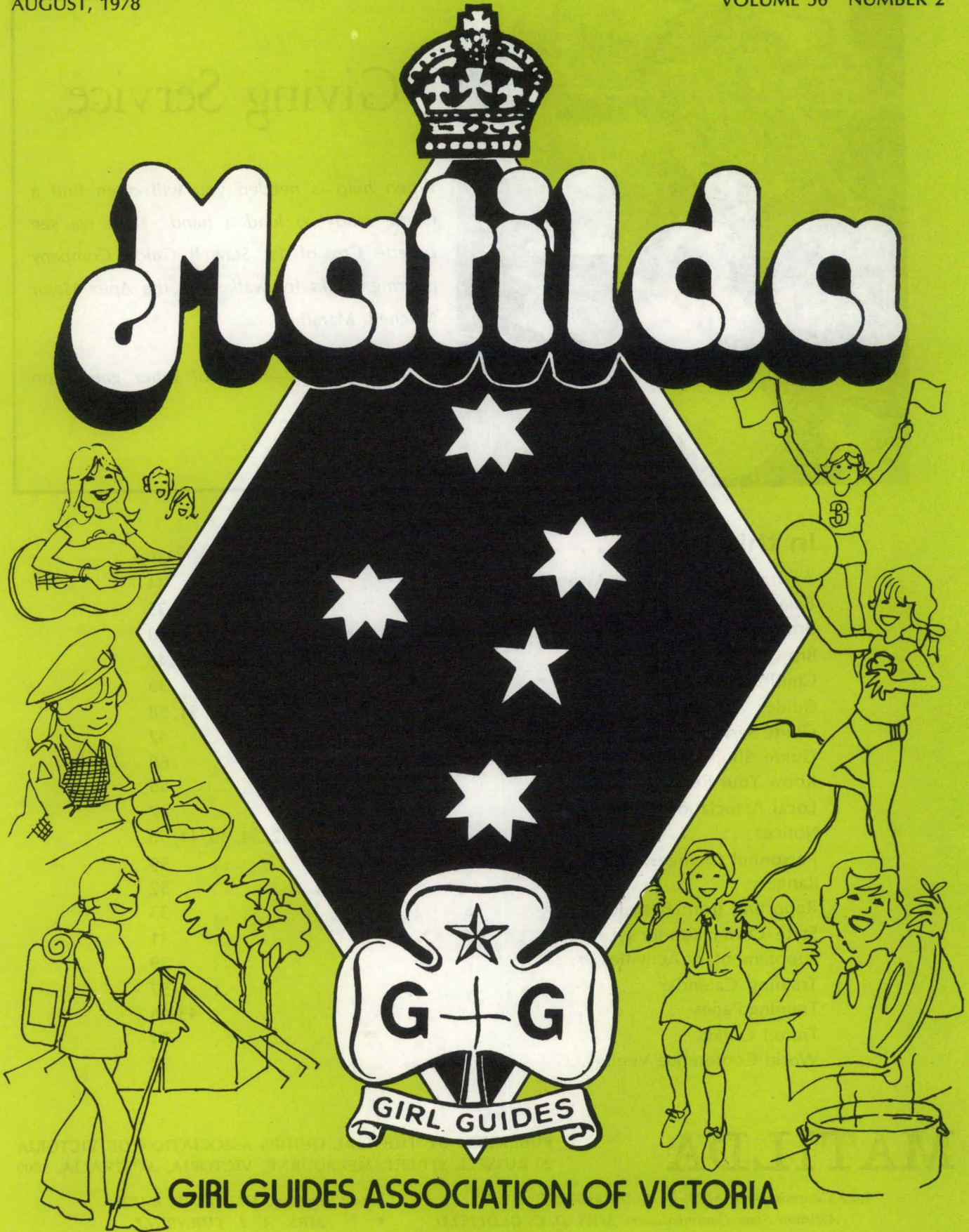


13-6-79

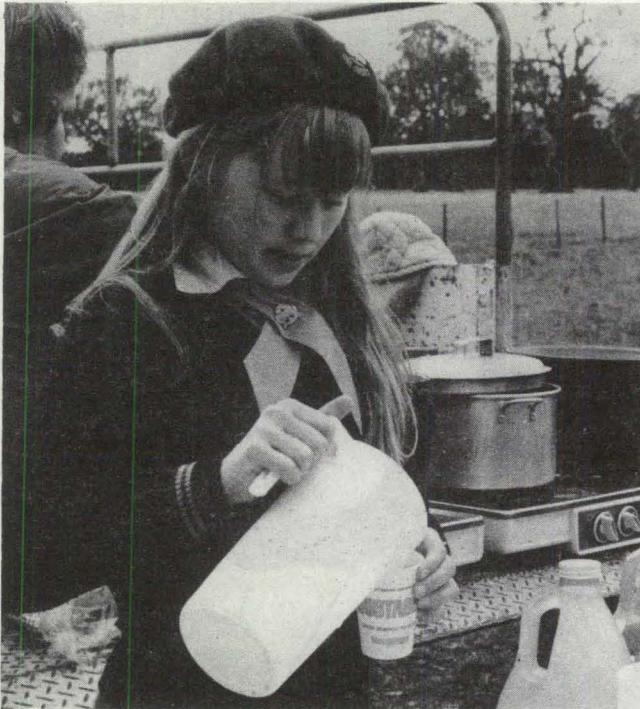
AUGUST, 1978

VOLUME 56 NUMBER 2

Matilda



GIRL GUIDES ASSOCIATION OF VICTORIA



Giving Service

When help is needed you will often find a Guide ready to lend a hand. Here we see Lynette Cox of 1st Stawell Guide Company pouring drinks for walkers in the Apex Major Mitchell Marathon.

Read about the service of other guides on Page 41.

In this issue . . .

	Page
Australian Association Assembly	34
Balancing the Budget	35
Britannia Park	40
Brownies	48
Children's Day	36
Guides	51, 58
Guide Service Team	42
Guide Shop	60
Know Your Regions	55
Local Association Section	47
Notices	32, 34, 36, 41, 56
Personnel Changes, etc.	59
Rangers	52
Reporting from Russell Street	33
State Commissioner's Letter	31
Supplementary Activities	39
Training Calendar	57
Training Pages	43-46
Trefoil Guilds	54
World Conference Venue	37

MATILDA

PUBLISHED BY THE GIRL GUIDES ASSOCIATION OF VICTORIA
20 RUSSELL STREET, MELBOURNE, VICTORIA, AUSTRALIA, 3000

State Commissioner: MRS. F. S. GRIMWADE •

State Secretary: MISS M. W. BARR

Assistant State Commissioners: MRS. D. O. OLDFIELD •

MRS. A. J. TURNBULL

Editor: MRS. L. I. RICHARDSON, 31 Hampshire Road, Forest Hill, 3131



From our State Commissioner

Dear Everyone,

As I write this letter I am sitting in front of a roaring log fire — listening to delightful music — whilst outside a freezing wind is blowing, hopefully straight from the snow, as we want to go skiing during the school holidays. I really feel that summer is more my season though; once it gets really cold I tend to want to hibernate.

Recently I was delighted to attend Hawthorn District Annual Meeting — a very happy and friendly evening. I was interested to hear a most exciting account of Jumbunna '78 from one of the patrol leaders and also to have a sneak preview of Encore '78 items.

Ballan District celebrated its 20th Annual Meeting with a wonderful gathering of past and present supporters. I joined the brownies, guides and guiders for a delicious meal beforehand — and the local association members were to be congratulated on the way they managed to run two gatherings one after the other.

The Ranger Conference, as usual, was a magnificent event — girls from all parts of the state and from most states. The Hon. Brian Dixon opened the conference and his talk on "Who Am I — Who Is My Neighbour?" — the theme of the conference — was extremely relevant and meaningful. I was sorry I could only stay for part of the day as Ann had that weekend at home.

Lysbeth has been holding the fort recently in addition to her training sessions as Jean has been on a well-earned holiday and Peg and I were at the Australian Association Assembly at Glengarry Training Centre, New South Wales.

The Victorian delegation met up with several W.A. delegates en route to Sydney — and this was the beginning of a week of fun, friendship and hard work. It is a wonderful feeling to go to a gathering and find you are continually greeting old friends — as well as making new ones. New

South Wales is to be congratulated on its hospitality and organisation — it even managed to stop the rain on the final day so we could participate in the children's activities. (I now have a beautiful paper owl called Sandra hanging up at home!)

New South Wales President, Lady Cutler, opened the Assembly and later that day entertained us all at a late afternoon party in her home, Government House.

In working sessions we studied the image of Australian Guiding, our work with minority groups and the structure of the Association. We have very useful guidelines to assist us in our future work, particularly in relation to structure. From the questionnaire which many of you filled in our greatest problem seems to be "COMMUNICATIONS".

Members of the Australian delegation to the World Conference are now well informed on Australia's thinking on items on the conference agenda, and our best wishes go to them for a happy and stimulating conference.

The last night of the conference there was a gala dinner and a farewell to Mary Lambie who, as Chief Commissioner over the past five years, has led us with such love and dedication. Mary was presented with a beautiful morning set with love and many thanks from all the states—and I am sure she will enjoy using it during her retirement. To say Thank You from our family in Victoria we gave Mary a pewter key ring made by Guider Helen Rawady. It is round with a Trefoil on the front and "Mary Lambie Love from Victoria 1978" is engraved on the reverse side.

The last day saw Glengarry invaded by brownies, guides, rangers and guiders, together with hundreds of visitors. Prior to the closing of the Assembly and official summing-up, her Excellency Lady Cowen, wife of our Governor-General, was presented with the Australian President's Badge and welcomed by us all.

Mary Lambie then officially handed over to Charlotte Renshaw-Jones, presenting Charlotte with the Chief Commissioner's Warrant Badge and Standard. I could not help but think back five years when I had been present at the last hand-over from Lady Price to Mary Lambie. Much has been achieved in those five years — and we now

welcome a new Chief Commissioner with our love, best wishes and full support.

About twenty of us flew out of Sydney, exhilarated, stimulated but very tired. Australian gatherings are expensive but they are most necessary if we are to benefit from each other's expertise and are to truly think and work together on a national basis.

To those of you who have worked so hard for the state finals of Encore '78 and are selected to go to Queensland — Congratulations and my best wishes for a wonderful trip.

I am sure that those of you who were not successful greatly enjoyed the preparation and participation and have benefited from the experience.

May you all have happy holidays.

Love and best wishes to you all.

Joan E. Grimwade

* * *

From a letter to the State Commissioner which she would like to share with Matilda readers . . .

"How can we put the FUN back into Guiding?"

I cannot imagine who could put a question like that in a question box, unless it was someone who had never PUT any fun into Guiding.

One only gets from something if one GIVES something, and I feel that we have a lot of "takers" and not so many "givers" as we could have. Even so, how can one "take" if one does not give?

I do not put myself on a pedestal, but I feel that over a number of years I have pulled my weight and I have always found that Guiding IS fun and, even with the ups and downs which one must expect, the FUN part predominates.

Are our leaders expecting to be spoon fed and given an A to Z pattern to follow? These days we do have more competition from other sources, but that should only help to make us more determined to make GUIDING fun.

I have found Guiding FUN and have always tried to make it so for the children with whom I worked — adults too — and I still say to anyone who has lost that FUN, "find it" and put it into your programmes, for the good of yourself AND THE CHILDREN. The children's happiness is in our hands and unless we do something those children are not going to get from Guiding the fun and pleasure which our Founder intended.

—"FORMER LEADER."

ALL-ADULT SEMINAR

Remember, this historic even cannot happen without YOU, if you are a local association member, guider, commissioner, Trefoil Guild member, ranger, parent — or interested friend.

Do not miss out. Apply now

"GUIDING'S ROLE IN TODAY'S WORLD"

COME AND JOIN US

at the Presbyterian Ladies' College,
Burwood Road, Burwood

on Saturday, 30th September, 1978

— 10 a.m. to 4 p.m.

Guest speakers will include Professor J. Scott, Vice-Chancellor La Trobe University, and Lady Price, Chairman of the World Committee of the World Association of Girl Guides and Girl Scouts.

The day's programme has been planned to stimulate and activate each one of us to reassess the part guiding has to play in the development of today's youth and our own particular role in this.

Parking will be available — enter school by main gates on Burwood Road. Burwood Road tram extension is now operating and passes the school.

A reminder: Morning and afternoon tea and coffee at lunchtime will be provided. You will need to bring a basket lunch. If the weather is fine we hope to have lunch in the garden, so you will need a small groundsheet as well.

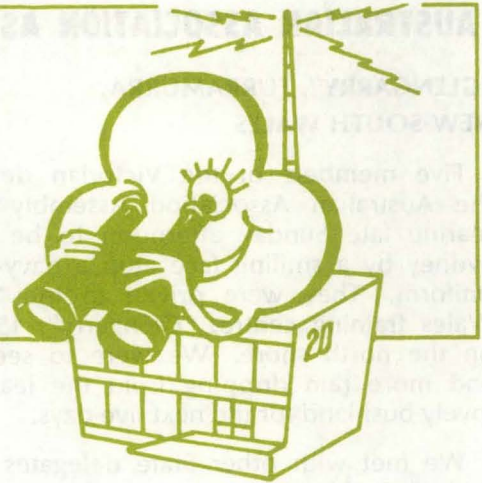
(See July Matilda (page 4) for Application Form — to be returned by 25th August, 1978.)

AUSTRALIAN GIRL GUIDE CALENDAR 1979

Calendar orders will be available at Headquarters by the end of August.

The Calendar sub-committee would be grateful if all orders could be collected promptly. Invoice for your order is enclosed in the parcel and you are requested to make payment on this invoice within 30 days.

REPORTING FROM RUSSELL STREET



EXTENSION ADVISER

We have a new Extension Adviser to welcome this month — Mrs G. R. Kirkham (Beth), of 13 Bedford Street, Box Hill, 3128 (telephone 89 2143). She replaces Mrs West who, as you all know, is our State Commissioner-Elect. Beth has been active in Guiding for many years, both as a Commissioner and more recently as President of the Auxilliary for the Extension Section. We know she will be warmly welcomed by all Extensions.

VICTORIAN ANNUAL MEETING

Is 23rd October earmarked in your diary yet? This is the date for our Annual Meeting, which will be a particularly special one this year as Joan Grimwade, our much-loved State Commissioner, hands over the reins to Marjorie West on that occasion. You and your Guiding associates will want to come to farewell Joan and welcome Marj so, if you haven't done so yet, mark that date now.

COMMISSIONERS' CONFERENCE, 1979

Not many of us are sufficiently well-organised to have a 1979 diary yet, but it is always wise to plan ahead and then you won't miss out! Commissioners, your Annual Conference will be held 23rd-25th February, at Monash University. Note that date now and then you can give it top priority — you will not regret it.

REGISTRATIONS

Will all Guiders please note that the basic registration fee for new Brownies, Guides, Ranger Guides or Rangers is now 50 cents, payable when a girl makes her promise and becomes a member of the Movement. When she passes on to the next section no further fees are required, but there is a cost (currently 10 cents) for the certificate of that section. Booklets of registration slips are obtainable from Headquarters free of charge — these are only used for the initial registration, not for the subsequent transfer from section to section.

PERSONAL ACCIDENT INSURANCE — GUIDERS

In response to a number of requests we have been able to arrange for the benefits payable to Guiders involved in accidents while participating in guide activities to be increased if **additional premiums are paid**. Any district wishing to take out additional cover for their Leaders should contact Mr Greenfield at Mercantile Mutual Insurance Co., 108 Queen Street, Melbourne, telephone 67 7332. Please note that Mr Greenfield is only concerned with premiums — all claims must be directed to the claims department.

All insurance premiums under the Guide Association's Personal Accident Insurance Scheme with Mercantile Mutual are payable in April each year — you may care to check that the premiums payable on behalf of members in your district have been paid for the current year.

OVERSEAS MAGAZINES

It will soon be time to take out your annual subscriptions for overseas Guide magazines and to help Guiders to do so at the lowest possible cost Headquarters will now place your subscriptions for you instead of referring would-be subscribers to Gordon and Gotch.

During September and October you may lodge subscriptions at Headquarters for

The Council Fire (World Association Quarterly)
— \$2.00 (one year), \$5.50 (three years).

The Guider (monthly, from Great Britain)
— \$7.20 (one year), \$19.00 (three years).

The Guide (monthly, Great Britain)
— \$6.20 (one year), \$16.00 (three years).

The Brownie (weekly, Great Britain)
— \$14.00 (one year), \$36.50 (three years).

MATILDA — LATE SUBSCRIPTIONS

Matilda regrets that stocks for May and June 1978 are now exhausted. Subscribers whose remittances were received after mid-June, and who have not received the above copies, are advised that their subscription year has been extended from April 1979 to June 1979.

ALL-ADULTS SEMINAR

Remember — it is now time to lodge your applications for the All-Adults Seminar to be held on 30th September. This is for **all** interested **adults** and an excellent programme is assured. Closing date for applications is 25th August — further details in July Matilda.

COMMONWEALTH YOUTH DEVELOPMENT COURSES

From time to time we receive news of Courses for a Diploma in Youth Work which are conducted at the Youth Development Centres in India, Guyana and Zambia. Bursaries covering air travel to the centre, full board and a book allowance are available to approved students. Any members interested in knowing more about these courses may seek further information from the State Secretary.

AUSTRALIAN ASSOCIATION ASSEMBLY

"GLENGARRY", TURRAMURRA,
NEW SOUTH WALES

Five members of the Victorian delegation to the Australian Association Assembly left Tullamarine late Sunday afternoon to be greeted in Sydney by a smiling face atop a navy-blue camp uniform. They were driven to the New South Wales training centre, "Glengarry", 15 miles out on the north shore. We were to see rain, rain and more rain dripping from the leaves of this lovely bushland for the next five days.

We met with other State delegates for dinner and their friendship gave a nice warm feeling. The pattern of hospitality and catering was set for the week and left absolutely nothing to be desired.

A blue tablecloth with "Glengarry" spelt out in leaves dominated the official table for the opening of the Assembly by Lady Cutler. Monday, Tuesday and Wednesday were taken up with matters affecting Australian guiding.

On Thursday and Friday Australia's opinions were given to the delegation which leaves for the World Conference in Iran in September.

On Saturday, 200 guests were entertained out-of-doors (the rain had stopped) by brownies, guides and ranger guides. The official closing ceremony was attended by Her Excellency, Lady Cowen, and Miss Mary Lambie handed over her duties as Chief Commissioner for Australia to Mrs Charlotte Renshaw-Jones.

—M.W. and E.C.



Mrs Renshaw-Jones (left) and Miss Mary Lambie during the change-over ceremony.

(Photograph by Graham Vear)



FOTO FUN IS FOR EVERYONE

FOTO FUN is the name given to the photographic competition you are all asked to take part in from now until the end of the January holidays.

So, take out your cameras, start pressing shutters. Then come to see YOUR ENTRY on display at POWER HOUSE, LAKESIDE DRIVE, ALBERT PARK RESERVE, during MOOMBA WEEKEND, 10th-12th March, 1979.

Conditions of Entry, Foto Fun Competition.

1. Competition is open to all members of the family and their friends.
2. All entries to be clearly identified — no responsibility taken for entries mislaid because of insufficient or no identification.
3. Maximum of six entries per person. Entry fee 10 cents per entry.
4. Entries will be accepted at Girl Guide Headquarters at any time until the closing date. Entries received after that date may be shown, but will not be included in the judging.
5. All entries must be addressed to FOTO FUN Competition, and MUST have a stamped addressed envelope included for the return of the prints after the display.
6. Entry forms are available from your Region Commissioner or from Headquarters.
7. CLOSING DATE IS 31st JANUARY, 1979.
8. Judging will be conducted in the first week in February, and the judges' decision will be final.
9. Entrants whose photographs are selected for enlargement will be asked for negatives. So keep them in a safe place, well labelled. This enlargement will become the property of the Girl Guides Association and may be used as the association chooses for public relations displays and in any way it wishes.
10. Photographs and slides must be original and must not have been submitted in any other competition.

GOOD PHOTOS WILL BE
GOOD FUN AND MAYBE WILL WIN YOU . . .
GOOD PRIZES.

BALANCING the BUDGET

Congratulations, fellow Victorians, for rising to the State Commissioner's challenge for increased membership subscriptions this year. The response to this request was magnificent and Headquarters would like to thank you very much. Your efforts have enabled us to chase the proverbial wolf away from our door, at least for a little while, and, instead of ending the year with an expected loss of over \$50,000, we have just managed to balance the budget.

Our Budget — Just as families have to plan their spending ahead, so do we at Headquarters. Each August we have to study our expected income and estimate our running costs for the year. If a short-fall in income is foreseen we have to take a hard look at our expenditure and, if that cannot be trimmed back, then consider how to increase income. Our basic expenditure is kept as low as possible so there is little scope for trimming back — any attempt to do so means we curtail some important aspects of the Movement's work, and no-one would want that to happen, would they?

Our income depends largely on the number of members we have. If the number of girls increases, then so does the amount received in membership fees, but if the number falls, so does our income. Because we do not know just how much money we will have to meet our next year's many commitments until all yearly census forms reach us at 20 Russell Street at the end of June, it is well into the Guide year before the overall picture is known. Budget time in August shows how we are placed and it has been our practice to wait until then when we **know** the whole situation before we make any announcement regarding any subscription increases. That is why we were forced to increase fees in the middle of the 1977/78 Guide year — a decision the Executive Committee deeply regretted but one for which there was no alternative and, in the light of our final figures for the year, this was the correct decision.

New Procedure — To avoid the inconvenience that a delayed announcement as to the amount payable by each girl causes, and to give the Association more ready cash with which to work, Unit Leaders will now be asked to remit to Headquarters membership subscriptions half-yearly instead of the previous practice of once per year. In the October issue of Matilda a remittance form will be printed, and Leaders will list the names of all girls on their Unit rolls on 31st October and

remit \$3.00 on behalf of each. These forms will then be sent in November, together with the appropriate fees, **direct to Headquarters**. Should the August budget show that increased fees are going to be necessary, an announcement to that effect will be made as soon as practicable, but such an increase would not take effect until the following April. This means that Leaders will know in advance the amount required from their girls for the forthcoming six-month period.

To facilitate book work for Guiders and to ensure that all Units will have sufficient funds in their Unit accounts to meet the amount payable in October and April each year, we strongly recommend that each member be asked to pay her dues in advance either at the beginning of each school term or twice yearly in April and October.

Where the Money Goes — Once members' subscription fees reach Headquarters, what happens to it? What is not immediately required is invested and made to work for Guiding, helping to increase our total income and thus lessening subscription. Members' fees account for about a quarter of the Movement's income, the remainder being made up from shop sales, April Action, legacies, donations, interest and State Government Grants. In the 1977/78 year our income was spent thus:

About 58% on shop purchases and operating costs — 38% on general running expenses, Headquarters administration, Training, Camping, Development and Matilda. (Salaries account for a major portion of this despite the fact that we have a small staff in relation to our total membership and there have been no increases in staff levels, except in Training, in recent years.) Of the remainder, about 4% goes to the Australian Association and to the World Association to meet our annual quota payments (increased amounts are required this year).

Whilst Guiding revolves around people and people are more important than cents, the Movement must still be run as a business and we in Victoria have been very fortunate in having several splendid business-men to oversee our financial affairs. Their expert guidance over the years has helped us to reach the sound footing on which we now operate.

(continued on page 56)



HAVE YOU AND YOUR UNIT OR DISTRICT PLANNED FOR —

UNIVERSAL CHILDREN'S DAY, 1978?

Wednesday, 25th October, is UNIVERSAL CHILDREN'S DAY throughout Australia — a wonderful opportunity to focus the attention of guides of all sections on CHILDREN — not only guides/girl scouts around the world, but on ALL CHILDREN EVERYWHERE! With the International Year of the Child (1979) just around the corner, could Guiding in this country lead our nation in interesting the public in CHILDREN — their needs, their rights, their hopes?

From the theme of the 23rd World Conference comes the thought —

'Today their future is in our hands;
Tomorrow our future will be in theirs.'

How will your unit or district celebrate Universal Children's Day this year? To help you in your thinking and planning (but **only** to help and guide, for, of course, the girls in the unit will have their own ideas!), here are some of the ways the day has been observed in the past —

In PAKISTAN the Girl Guides Association has held sports, games, theatrical productions, singing sessions and other activities for children — each year a theme is chosen, and the activities are centred around it.

In PARAGUAY the Girl Guides of Paraguay have also worked around a theme each year, and their activities have included interviews with senior guides on radio, a television interview explaining the programme, recreational activities (games, dances, songs) with children in marginal (slum) areas.

In JAPAN the Japan Association for UNICEF has organised an annual event, "The Festival of World Children", as part of its effort to strengthen international friendship among children.

In the PHILIPPINES several years ago a special ceremony was held in which a presentation of flowers was made by children of 11 countries.

Ceremonies included one minute of silent prayer, speeches, a dedication and musical selections performed by youngsters.

A wide variety of 'A-THONS' (spell-a-thons, walk-a-thons, etc.) has been held as fund-raising projects, and the proceeds donated to UNICEF — for general funds or for a special project.

Contact the UNICEF office at 49 Elizabeth Street, Melbourne, for information and literature on Universal Children's Day. Find out what other organisations in your area are doing — you may be able to combine with them — or invite children who do not belong to our movement to join you for this special day.

Guiding and UNICEF work together for CHILDREN — make this UNIVERSAL CHILDREN'S DAY a fitting curtain-raiser to your activities in connection with the INTERNATIONAL YEAR OF THE CHILD (1979).

* * *

*If we who have, cannot help those who have not,
then we cannot help ourselves.*

(John F. Kennedy)



CHILDREN'S BOOK WEEK AWARDS

Book of the Year:

The Ice is Coming, by Patricia Wrightson (Hutchinson Australia).

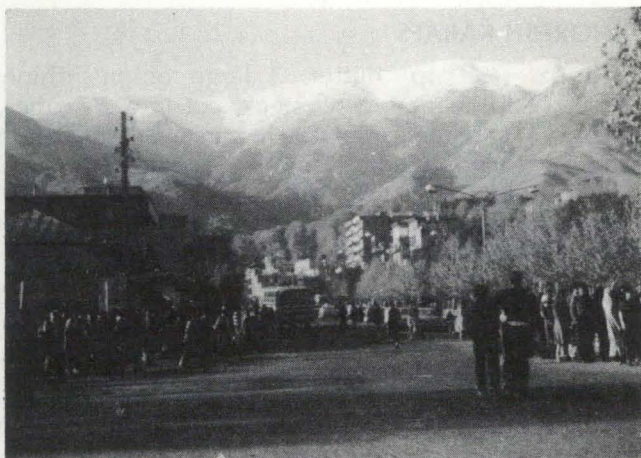
Highly Commended:

A Candle for St. Anthony, by Eleanor Spence (Oxford).

Commended:

The Curse of the Turtle, by Roy Thomas (Bodley Head) and

The Lieutenant, by Jack Bennet (Angus and Robertson).



TEHERAN — Street to Mountains.

September is the month when the thoughts of all Guides and Girl Scouts turn to Teheran — capital of Iran — for that is where the 23rd World Conference is being held.

I am sure you have all been learning all you can about Iran, so now it might be a good idea if you celebrated the World Conference with a Persian meal. To help you we have prepared a simple menu.

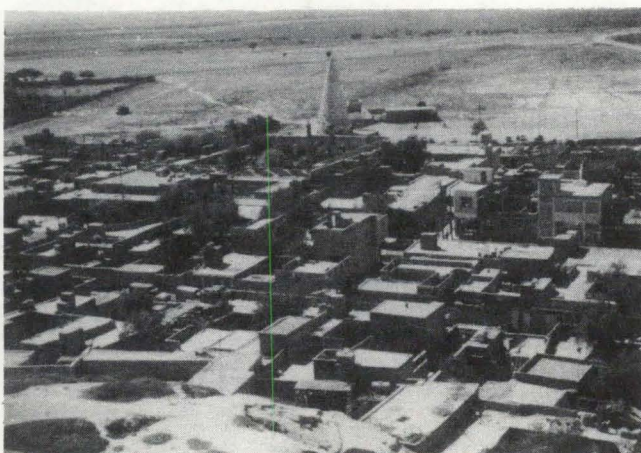
Mast or yoghurt is used greatly and Persians attribute their long life to it — it is used for all types of dishes — and even as an ointment for sunburn or facial!

MĀST VA KHIĀR

(Yoghurt with Cucumbers)

1½ cups yoghurt, 1 cucumber, 1 tablespoon fresh dill or 1 teaspoon dill weed, salt and pepper.

Put yoghurt in bowl. Peel and chop cucumber finely and add it to yoghurt. Add finely chopped dill and salt and pepper to taste and mix well. Let this stay in refrigerator for half an hour before serving. Mâst va Khiâr may be served as an appetiser or as a substitute for salad. (Serves 3-4.)



Looking towards Daniel's tomb — SUSĀ.

IRAN

WORLD

CONFERENCE

VENUE

Ash is Persian soup, a very popular meal among the Persians. The Persian word for cook is ash-paz, "maker of the soup". The word "kitchen" in Persian is "ash-paz-khânah", that is, "the house of the cook".

IRANIAN PRUNE SOUP

8 oz. (1 cup) prunes, soaked overnight, drained, stoned and coarsely chopped, 1 large onion, finely chopped, 2 tablespoons rice, 2 tablespoons chopped fresh parsley, 1 tablespoon chopped fresh mint, 4 oz. (½ cup) lentils, 2 pints (5 cups) chicken stock, 2 pints (5 cups) water, 1½ teaspoons salt, ½ teaspoon black pepper.

Put all ingredients in a large saucepan. Place the pan over high heat and bring mixture to boil. Reduce heat to low, half cover pan and simmer for 2 hours. Remove pan from heat and pour soup into warmed soup tureen. Serve at once. (Serves 6.)

OR

SOUPE MĀST VA KĀHIĀR

(Cold Yoghurt Soup)

1 boiled egg (chopped), ½ cup raisins, 2-3 cups yoghurt, ½ cup light cream, 6 ice cubes, 1 cucumber (chopped), ¼ cup green onions (chopped), 2 teaspoons salt, ½ teaspoon pepper, 1 cup cold water, 1 tablespoon parsley (chopped), 1 tablespoon fresh dill (chopped) or 1 teaspoon dill weed.

Soak raisins in cold water for 5 minutes. Put yoghurt in big mixing bowl, add cream, chopped egg, ice cubes, chopped cucumber, green onions, salt and pepper. Pour off water from raisins and add it to yoghurt mixture. Add 1 cup of cold water and mix well. Let this soup stand in refrigerator for 2-3 hours. When serving, garnish with parsley and dill. (Serves 4-5.)

Dolmeh is Persian "stuffed" — Dolmeh Barg means literally "stuffed leaves" and is a real favourite.

STUFFED CABBAGE LEAVES WITH TOMATO SAUCE

1 large head of cabbage, 3 tablespoons butter, 1 lb. stew beef, cut in $\frac{1}{2}$ " cubes, 1 onion (finely chopped), 1 teaspoon salt, $\frac{1}{4}$ teaspoon pepper, $\frac{1}{4}$ teaspoon cinnamon, $\frac{1}{2}$ cup tomato sauce, $\frac{1}{2}$ cup water, 1 cup rice (Minute Rice), 1 cup water, $\frac{1}{2}$ tablespoon salt, $\frac{1}{4}$ cup parsley (chopped), 1 tablespoon fresh or dry dill, $\frac{1}{2}$ cup tomato sauce, $\frac{1}{2}$ cup water, 2 tablespoons lemon juice.

Core cabbage, set it in pot of boiling water, cover, and cook until almost tender (be careful not to over-cook). Drain well and remove leaves, cut out midribs. Melt shortening. Sauté meat with onions and seasoning until golden brown. Add tomato sauce and water and let simmer for 25 minutes. Cook rice with water and salt according to directions on box. Put meat and cooked rice in a bowl. Add chopped parsley, dill and mix well. If a little more salt is required, add to taste. Take each leaf in your hand. Put a tablespoonful of meat mixture on it and shape it into a fingershaped package. Line bottom of pan with the cabbage leaves that could not be used. Pack in stuffed leaves, placing any remaining leaves between layers. Pour tomato sauce and water and lemon juice over cabbage leaves. Cover with inverted plate and pot lid. Cook over low heat for 45 minutes to 1 hour. Serve topped with yoghurt.



Rice or "Berenj" used as a basic food. It is cooked "chelo" or steamed, "polo" or pilaf. Chelo Kabâb is a speciality of Persia.

Put chelo in a plate, make a small hole in the centre of it and put egg yolk in it with plenty of butter, then the boiled Kabâb. For best results Shish Kabâb should be broiled on charcoal.

4-5 lb. leg of lamb, 2 medium onions (grated), 1 tablespoon oregano, $\frac{2}{3}$ cup vinegar, 4 green peppers (2" squares), 8 very small sweet onions, 6 large tomatoes (quartered), salt and pepper to taste.

Clean lamb. Cut off excess fat. Cut meat in 2" cubes. Marinate this meat in vinegar and grated onions and oregano. Cover meat with wax paper and let it remain overnight in refrigerator to marinate.

When ready to cook, season well with salt and pepper and put one slice of meat, green pepper, onion and tomato on a skewer. Repeat this until skewer is full. There should be 4-5 pieces of each on the skewer. Broil this on charcoal broiler.

KHORESH KARAFS

3 oz. ($\frac{3}{8}$ cup) butter, 3 large onions, thinly sliced, 2 lb. lean stewing steak, cut into 2" cubes, 4 oz. (1 cup) chopped fresh parsley, 1 teaspoon salt, 1 teaspoon black pepper, 1 pint ($2\frac{1}{2}$ cups) beef stock, 2 fl. oz. ($\frac{1}{4}$ cup) vegetable oil, 1 small head of celery (about 10 stalks), trimmed and cut into 2" lengths, 1 tablespoon lemon juice.

In a large saucepan, melt butter over moderate heat. When foam subsides, add onions and cook, stirring occasionally, for 5-7 minutes, or until they are soft and translucent, but not brown.

Add meat to pan and cook, stirring and turning occasionally, for 6-8 minutes, or until meat is lightly and evenly browned. Stir in parsley, salt and pepper and mix well to blend.

Pour in stock and bring to boil over high heat. Reduce heat to low and simmer mixture for 45 minutes.

Meanwhile, in a medium-sized frying-pan, heat oil over moderate heat. When oil is hot, add celery to pan and cook, stirring and turning occasionally, for 3-4 minutes, or until celery is translucent and is beginning to brown. Remove pan from heat and add celery to stew, stirring well to mix.

Cook stew for 1 hour. Stir in lemon juice and continue to simmer stew for a further 15-20 minutes, or until meat is very tender when pierced with point of a sharp knife. Remove pan from heat and serve at once.



Light desserts are eaten because of the rice in main course. Fresh fruit is eaten, or small cucumbers which, in Persia, are served as a fruit. When fruit is served after dinner it is customary for the hostess to peel the fruit and pass it to guests.



Persians, like most people, are fond of green salads. When fresh vegetables are in season they try to eat green salad with every meal.

There is an old Persian saying that it takes four people to prepare salad: a generous man to add the oil, a stingy man to add the vinegar, a wise man to give it the right touch of salt and pepper and a fool to mix it well.

We hope you enjoy your Persian meal.



SUPPLEMENTARY



ACTIVITIES

REGION SAC REPRESENTATIVES

What do they do?

This is the best way to explain.

Suppose your unit decided they wanted to do puppetry, canoeing, horseriding, drama, etc., and you wanted an outside expert to help you.

Your SAC representative will find that expert for you so that you can even arrange the activity in unit time. If a number of units request the same activity your SAC representative may try to arrange a division or region day for all those interested. So please answer the questionnaires your representative sends to each unit and then telephone her if you need help. Then Supplementary Activities can also "GET GOING—GET GUIDING".

SAC ON THE BEAT

During the last couple of months each region has been attempting to find an adult interested and willing to be the Region SAC Representative.

Many regions have been successful, and each month we will report on activities within each region.

These will be shared with you, so that we can all benefit from the ideas and activities. You may like to try some in your unit, with the help of an expert.

Let us go with SAC on the Beat, around the State, and see what has been happening.

In **WOORAYL** their representative has sent a questionnaire to all units, and already received requests for pottery, horseriding, national dancing and copper enamelling. Experts are being sought for these activities.

DANDENONG have sent a questionnaire to all units. Their representative and her committee are looking at the possibilities of a water activities weekend, requested by a number of units.

BARWON hope to expand their leisure-time programme to include supplementary activities.

OUTER EASTERN are sending a questionnaire to each unit very soon.

In **MORNINGTON PENINSULA** their representative and her committee are receiving many answers to their questionnaire, and have already planned an archery day, square dancing (18th October) and horseriding in September.

They have found experts for yoga, puppetry, macrame, leatherwork, pottery, spinning, drawn thread embroidery, crochet, tatting, horseriding,

new games, hockey, athletics and gardening, with specialists in African violets, begonias, pelargoniums, ferns, camellias, roses and fruit trees, native plants, indoor plants, and floral art.

A questionnaire has been sent to all units in **NORTH METROPOLITAN** region and **WEST METROPOLITAN** are still looking for a SAC representative. Werribee District again held their art and craft exhibition in July, which was very successful.

These regions are still looking for an enthusiastic and interested adult to be their SAC representative: Baw Baw, Hume, Wimmera, Western Plains, Otway, North Central, Gippsland, South-Eastern.

Next month we hope to hear from more regions and bring you news from around the State with "SAC on the BEAT".

SAC BADGES

These have been made available to regions that want them. If you wish to buy SAC badges, they can be obtained from your region SAC representative and cost 10c each.

SAC badges may be worn **ONLY** on camp hats, blankets, or other camp gear. They must not be worn in full uniform.

'78 EXPERIENCE

August 25th-28th.

Here is more information concerning this Workshop for Adults. Everyone will experience all activities, some of which are unusual.

There will be public speaking, jazz ballet, archery, volleyball, kitemaking, communication techniques, imagination and initiative activities, folk dancing, art, crazy games and campfires. You may even have the chance to learn how to play a didgeridoo!! We hope that Mr. Tommy Hanlon Jr. will be available to take a session on clown make-up and mime. We have other surprises as well.

THERE ARE STILL A NUMBER OF VACANCIES, AND LATE ENTRIES WILL BE ACCEPTED. Application form and details can be found in July Matilda.

Please note change in time of arrival on Friday — 7.30 p.m., not 2.30 p.m. as previously stated.

If you have not yet applied — **DO IT NOW!!!** THIS IS DEFINITELY AN EXPERIENCE NOT TO BE MISSED.



BRITANNIA PARK

HELP is wanted on Sunday, 15th October, for another Firewooding Bee. Please, fathers and friends, come to help us collect, chop and stack enough firewood to see us through the summer camps. Chain saws will be available for those who can use them. If you can come, please telephone me (836 9207) or Camping Adviser, Jessie Lamond (299 1638). Please help.

Guiders, once more I ask you — please do not leave firewood scattered around campsites. Campers in May left two large heaps on Hoffmeyer and Cameron sites nowhere near the stoves. They will have to be moved before grass can be mown. What about the Golden Rule?

We are most grateful to ranger guides of West Waverley (Shoalhaven) unit who did a good job painting the interior of Harrison House. It looks so bright and clean now. They have offered to make new bedspreads for it. The next thing we want is carpet for the floor. Have we any volunteers to paint the outside and the roof?

How many different kinds of birds have you seen at Britannia Park? Mrs Fraser, who is so knowledgeable about birds, has seen 52 varieties. Of course, she lives there and can see them when the place is quiet. She has all the names written in a book.

Miss Alma Cockerell, who is in charge of the Maintenance Fund, is a very happy lady. She tells me that we have received more money for the fund this year than in any other year. You really are wonderful people. It is a tremendous help to be able to buy extra furnishings and things needed for the houses with that money. So please keep it up, the need is constant. If you are sending a cheque, will you make it payable to Britannia Park Maintenance Fund, and post to Miss Alma Cockerell, 11 Ross Street, Northcote, 3070. With the rise in postage it has been decided not to send receipts, your names will be in Matilda, with our thanks.

Our very warm thanks to the following, who have sent cheques recently:

April

- 26 — Westernport Division
- 27 — Westernport Division
- 28 — Westernport Division

May

- 1 — Mitcham Local Association
- 27 — Murrumbeena-Carnegie Local Association

June

- 1 — 1st Strathmore Guide Company
- 2 — Lakes Entrance Local Association
- 3 — Horsham Local Association
- 4 — Horsham Local Association
- 5 — Pyramid Hill Local Association
- 6 — Yarraville Local Association (Memory of Mrs Ebeling)
- Cavendish Local Association
- 7 — Kew Local Association
- 8 — West Waverley Local Association
- 10 — North Balwyn Local Association
- 15 — Camberwell-Hartwell Local Association
- 16 — Camberwell-Hartwell Local Association
- 21 — Mrs B. J. Minogue
- 30 — In memory of Mrs V. M. Rodwell

—PATRICIA GRAY,
Acting Convener.

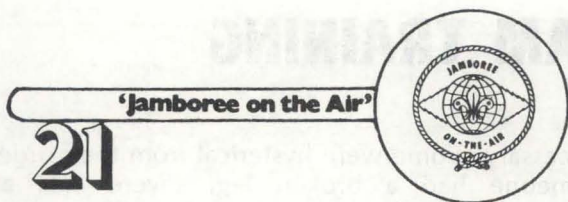
40th ANNIVERSARY FOR BRITANNIA PARK

Keep the second weekend in March 1979 free to come to Britannia Park to celebrate 40 years since it was purchased by the Association.

It will take the form of an indoor and outdoor camp for adult members, past and present.

There will be an Open Day on Sunday, 11th March, for visitors (adults). There will be a Guides' Own in the morning.

More about this in the months to come, but do keep this date free.



JAMBOREE ON THE AIR IS 21

21st-22nd October.

Last month I mentioned that JOTA is 21 this year and we would like you to join with thousands of other Guide and Scout folk all over the world in celebrating the birthday.

For those new to the movement and those not sure what JOTA (Jamboree-on-the-Air) is about, it is the one weekend each year when amateur radio operators open up their shacks, dens, homes or whatever to scouting and guiding people to allow them to talk to others in overseas countries, interstate, their own state or even the next suburb.

Getting to know other people is an important part of the Guide programme and this is a good way to contact someone somewhere else.

A resident in Victoria for a number of years, a guide from my unit quite by accident contacted her old home town in New South Wales. What an exciting time she had catching up on local news. Even those with her learned something about the town, and imagine the news she had for her parents that night.

About four years ago another guide from my unit contacted a group in Tasmania. Two of them still write to each other and have, in fact, spent a holiday with each others' families.

These are only two instances of things that can happen when you join in the fun of JOTA.

Many girls and boys have discovered pen-pals and have become involved in badge swapping.

Do not be the ones to miss out on the fun.

Start looking now for operators. If you know of one in your area, this is the time to approach him for his help. Operators are usually easy to find by the tall, sometimes elaborate aerials on the roof of the garage or house. Your local scout group may also be able to help you find a contact.

This activity is not restricted to city guides and we hope many country people will take part this year. Brownies, guides, ranger guides, rangers, leaders and commissioners can all take part in our birthday.

Start planning now and look out for an operator. Meanwhile, for further help and details, please contact me any evening on 232 7414.

—JOY KELLETT,
Guide Liaison.

GUIDES HELP FLOOD VICTIMS

Guides are good at cleaning up — and following recent Gippsland floods two units of Guides hopped in and quietly did their "good turn".

Near the Traralgon Creek, which runs across the City of Traralgon, 100 homes had to be evacuated when the flood peaked. We had no loss of life and the rescues went on for 24 hours — efficiently, quietly, but grimly. But, as with all disasters, the time comes to clean up.

We all heard about a 98-year-old man who had a heart attack when three feet of swirling, muddy water crashed through his creek-side home. He and his elderly housekeeper were rescued. He was taken to hospital, his housekeeper was taken to friends and, after the deluge abated, the house was locked up. It remained in that state — no power on and with sludge from the flood slowly leaving the wrecked home. Permission from the owner's son was obtained and, so four leaders, 12 guides and a "new Mum" turned up and set to! Not much imagination is needed to see what confronted them, but perhaps you could think about the kitchen — stove, pantry and refrigerator of bad meat and food.

How those girls worked. No grumpiness, no complaints, no excuses or asking for time off from these under-14-year-old guides.

Living the promise; lending a hand; doing a good turn; whatever you want to call it, worked at Traralgon that week, just as it does when the need arises anywhere else in the world.

—BETTE McLAUGHLIN.



LENDING A HAND

Recently the family home of two of our guides was destroyed by fire. I would like to thank all leaders, guides, and especially Middle Brighton Brownies, who so willingly responded to requests for assistance for the family. Accommodation has been provided for the family and they are now managing very well. The surplus clothing, etc., has been forwarded to a Birthright counsellor for another needy family.

—REENA RAD,
1st North Fitzroy Guide Company.

GUIDE SERVICE TEAM TRAINING

Members of the Guide Service Team underwent a Training Exercise at night, at Keilor.

A report had been received of an emergency situation existing at Keilor. This required transport of affected people from a disaster area to a welfare assembly centre to be manned by members of the Guide Service Team.

The team was briefed by the radio operator and co-ordinator of the exercise. Each member was issued with the distinctive arm band now worn by the team. It is a bright yellow arm band, with the Guide Trefoil on a white background, and the letters "Guide Service Team" in black.

Radio messages were being received from the field by the base radio operator and were relayed by runner to the co-ordinator. Drivers were advised promptly of the location of families needing transport out of the disaster area. Some were injured, most of the families had been separated in the wake of the disaster and needed to be re-united.

The team immediately set up emergency feeding of hot soup, bread and butter and plain cake. A First Aid corner was arranged, Registration and Enquiry immediately went into operation and provision was made for the entertainment of small children using the Emergency Toy Box held for such purpose.

As victims arrived they were immediately registered, given a meal and any first aid treatment

necessary. Some were hysterical from their ordeal, someone had a broken leg, severe cuts and abrasions had been sustained by falling debris, some had rescued their pets and one lady had rescued the washing! During the ensuing power failure a lady was delivered of a healthy baby boy by emergency childbirth . . . campfire singing, held impromptu, helped to provide a diversion!

Shire Hall at Keilor provided a most realistic setting for the exercise as the front of it is being rebuilt and, in the wintry weather, intermittent rain squalls and shadowy moonlight, it really looked the part . . . that of an emergency shelter.

At the end of the two-hour exercise a debriefing was held to iron out any difficulties and deficiencies experienced, and the team is hopeful of participating in something a little bigger at a later date.

Team members were unanimous in their praise of Rae McPhee and Margaret Callister for the clockwork co-ordination of the training, and are indeed grateful to all the families who were willing to give up their night beside the warm fireside to come out and be part of the exercise. Some of the acting talent uncovered was tremendous!

All team members did the job allotted to them without overlapping and thus the exercise proved that the team is a TEAM!

50 YEARS OF GUIDING IN TERANG

Terang Brownie Pack recently enjoyed a memorable and happy weekend when we joined with present-day and former brownies, guides, rangers and leaders to celebrate 50 years of Guiding in Terang.

Celebrations began with a welcome to everyone by our District Commissioner, Mrs Selman, and the cutting of a cake. Events over the two days included a concert with items by us, the guides and rangers, which was a great success, a Guides' Own church service and a mannequin parade in which we modelled international costumes and former Brownie uniforms from as far back as 1912. Plans for a bonfire were washed out by rain, but instead a warm and cosy sing-song was held in our hall!

At the close of the weekend candles were lit and passed to each section of the Guide Movement, in the hope that Guiding will continue in Terang for many, many more years to come.

FROM THE FOUNDER'S PEN:



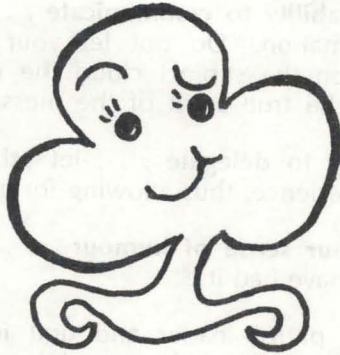
Camp Fire is one of the happiest hours of camp. Songs, recitations and small plays follow each other on the programme.



TRAINING PAGES

WHOSE DECISIONS? — YOURS OR OURS?

"ALL SECTIONS AND UNITS OF GUIDING ARE SELF GOVERNING AND PRINCIPLES OF DEMOCRACY MUST CONTINUALLY BE KEPT IN MIND." (Page 39, Leaders' Workbook.)



Sue asks **"Where is self-government carried out in Guiding and what are these DEMOCRATIC PRINCIPLES?"**

SELF-GOVERNMENT IS CARRIED OUT BY:

Brownies in Pow-Wow
Guides: Patrols in Council and Patrol Leaders' Council
Rangers: Unit in Council
Ranger Guides: Unit in Council.

DEMOCRATIC PRINCIPLES

1. That every member should have **equal** opportunity to discuss all matters which will affect the group and herself.
2. That the opinions of **ALL** should be considered and respected.
3. That each member should have the right and opportunity to vote on all matters.
4. That decisions are made and accepted on majority vote.
5. That each member is given opportunity to assist in the organisation of any activity decided on by group.

To enable these principles of democracy to be carried out the climate of the decision-making group must be set, therefore **CHAIRMANSHIP** becomes of paramount importance.

WHO IS CHAIRMAN IN EACH OF THESE DECISION-MAKING GROUPS?

Pow-Wow	— Brownie leader
Patrols in Council	— Patrol leader
Patrol Leaders' Council	— Guide leader
Unit in Council	— Chairman elected from among their members.

Prior to meeting of group the chairman should:

Draw up an agenda and aim to circulate it to attending members **prior to the meeting**, as it enables all those who propose to attend to give prior thought — collect necessary information — and to consult with all others who could be involved — to put into practice the **democratic principles**.



SAMPLE AGENDA FOR A PATROL LEADERS' COUNCIL

N.B.: Can be adapted for any meeting.

1. Welcome
2. Opening . . . Platypus Patrol's turn
3. Apologies
4. Minutes previous meeting
5. Business Arising . . . Camp Patanga, travel, etc.
6. Correspondence . . . Letter from Local Association asking for help with Gala Day
7. Finance . . . Company money raising effort for new ropes
8. Reports . . . Guiders' Reports, Patrol Reports
9. General Business . . . Programme plans for month or term. Assessment of 8-point badge progress
10. Date of next meeting
11. Close . . . Koala Patrol's turn.

THE CHAIRMAN WILL ALSO CHECK ON PHYSICAL ARRANGEMENTS FOR MEETING —

- (a) that seating is placed so no member has that 'left out' feeling;
- (b) that adequate heating is provided during cold weather;
- (c) that meeting starts at stated time (latecomers please slip in as unobtrusively as possible).

The next step will be the chairing of the meeting. Below are listed 10 qualities of a **democratic** chairman. How many more can you think of??

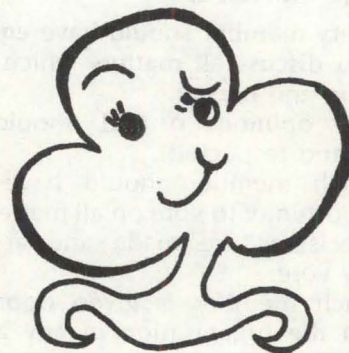
1. **Be friendly and approachable and have a genuine interest in each individual member of the group . . .** We all need to feel wanted, welcome and appreciated.
2. **Be tactful.** Never display scorn towards a minority voice. Try to make each member feel her contribution is of value.

3. **Be impartial . . .** Do not force own ideas on group but be ready to initiate any change desired.
4. **Be enthusiastic . . .** and willing to try new ideas.
5. **Be mentally alert . . .** and ready to assess when discussion has gone on for long enough and it is time to reach a decision on the matter.
6. **Be honest . . .** never be tempted to 'rig' a vote or to alter a decision once made. Display TRUST and you will get trust in return.
7. **Be a good listener . . .** do not monopolise the meeting. Try to draw out the quiet members; sometimes we only hear the loudest voices or the person who has ability to express herself well.
8. **Develop ability to communicate . . .** to pass on information. Do not let your personal feelings on the subject cloud the issue, but pass on the true spirit of the message.
9. **Be willing to delegate . . .** let others learn from experience, thus allowing for growth!..
10. **Retain your sense of humour . . .** lose that and you have had it!!!

The young patrol leader and unit in council leader will need your help in training them for their chairmanship role.

There are many books available which give a clear outline of meeting procedure and requirements of chairman, secretary, etc., but have you ever thought of asking if you could attend a meeting within your community, e.g., council meeting . . . Red Cross . . . etc.

SUE ASKS, "WHAT ABOUT ADULT MEETINGS? DO THE PRINCIPLES OF DEMOCRACY APPLY TO THEM?"



That question started me thinking . . .

Have I ever been guilty of planning for the members of my unit without ascertaining their feelings? *HAVE YOU?*

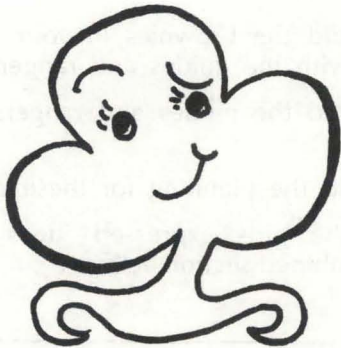
Have I ever gone along with the majority opinion for fear of being 'different' by wishing to discuss matters with girls? *HAVE YOU?*

As a Commissioner, have I ever condoned this? *HAVE YOU?*

Have I always reported the true opinions and requests of the girls? *HAVE YOU?*

Have I ever been guilty of taking over the organising of guide rallies, ranger fixtures, Brownie Revels, Guides' Own services, adult leaders' conferences?

HAVE YOU!!



I am pleased when Sue chips in again and says she heard of a division that had all the fun of planning a Thinking Day service and wondered why attendance from leaders and girls was poor . . . Perhaps, Sue, because it was organised by a mysterious group called "they" who forgot to apply the rules of Self-government and Democracy. IT IS UP TO US ALL TO SEE THAT

DEMOCRACY

is never allowed to turn into
D E C A Y

DELEGATING

ELECTING EFFECTIVELY

MAINTAINING MUTUAL MEDIATING

OVERCOMING OBLIGATORY ORGANISING

COVETING CAREFUL CONSIDERATIONS

REACHING RIGHTFUL REASONING

ABANDONING AUTHORITARIAN AUTOCRACY

CONSTRUCTIVE CREATIVE COMMUNICATION

YIELDING

FIRST AID BOX



BUMPS ON THE HEAD

Accidents can happen to anyone at any time, this is especially so when active games are played at unit meetings. Players can accidentally fall over, get splinters in their hands or bump their heads.

In the case of bumps on the head, you are advised to observe the patient and if there is **LOSS OF CONSCIOUSNESS OR BLEEDING FROM THE SITE OF INJURY** please **NOTIFY A DOCTOR IMMEDIATELY.**

If the above symptoms are not present —

DO

- * sit the patient down, comfort her, as she is likely to be upset
- * assess the extent of injury
- * allow small amounts of sugar-based fluids if required
- * suggest patient sits quietly for remainder of meeting
- * advise her parents what has happened.

DO NOT ALLOW PATIENT

- * to continue with energetic activity
- * to drink large amounts of fluid
- * to take Panadol or Disprin.



DUTY TO GOD

GOING TO CAMP?

What about a new grace?

Something old — something new

Available at the Guide Shop:

A Brownie Guide Prayer Book — Words and Music

Our Chalet Song Book — Words and Music

An Australian Campfire Song Book — Words and Music

Sing a Song for Sixes — Words and Music

Sing Along with the Girl Guides — Record

Graces and Vespers, 50/75 Training Department, H.Q.

In 'Today's Guide' there are often new songs with music and words published. Graces appear at times.

Have you looked in your cupboard or amongst those old books belonging to your unit?

'Songs for Singing', 'The First Book of Camp Fire Songs', 'Graces and Vespers' and others are now out of print, but old favourites are worth using.

Remember to give opportunities to the unit to learn songs before they need them — when the food is waiting on the table, getting cold, is not the best time to begin teaching new graces!

A grace is a prayer of thanksgiving and the atmosphere in which it is sung can be created happily by a few words by you as the leader.

DISTRICT DISCUSSION TOPIC

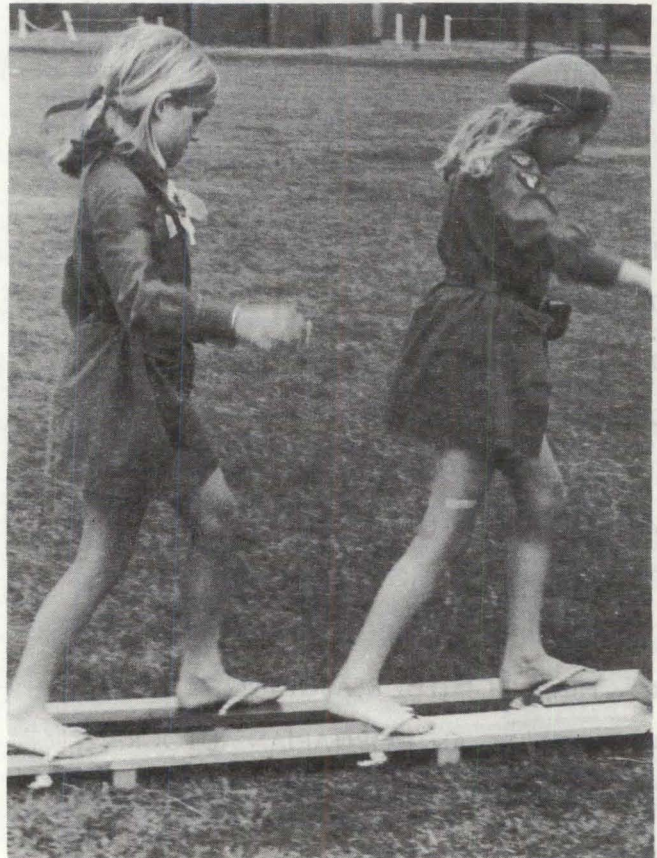


When did the brownies in your district last join with the guides and rangers?

When did the guides and rangers meet together?

Who did the planning for these events?

Have the girls expressed ideas for a future combined section activity?



LOCAL



ASSOCIATION SECTION

Thought for the Month:

"When a friend asks, there is no tomorrow"

Golf Day at Kooweerup

Kooweerup local association held their seventh annual Golf Day at Lang Lang Golf Course in near perfect conditions. Eighty players, both men and women, were sent on their way by enthusiastic local association members and golf associates, Margaret MacDonald and Allyson Williams, who did a mammoth job, as usual. Other members of the local association conducted a well-stocked stall in the club rooms.

Trophies donated by local businessmen and parents were presented at the end of the day.

The local association raised \$270 at this annual venture. Thanks are due to the golf club committee for allowing the use of the course and club house again, to donors of trophies and stall goods and to all who worked and played.

"Facts 'n' Fun" Days

(formerly Local Association Training Days)

At Dandenong on 26th September, Bendigo on 4th October and Headquarters on 19th October.

Please ask your district commissioners for details of times, fees, lunches, etc. All local association members are very welcome, but "Facts 'n' Fun" Days are particularly useful for incoming executive members who are feeling a little lost and mothers who are new to the movement.

Halfway Farm

Do you ever grumble about the five-minute drive to collect your guide from the hall?

Take off your hat to the dad who drives his elder daughter 16 miles to Boort Rangers on Monday nights and waits for her, and the mother from the same farm who drives her scouts 16 miles to Wycheproof on Tuesdays and waits for them, and who can still look forward to the youngest joining Brownies in a couple of years! (Mother has also just retired after some years as local association president.)

Annual Meeting — Wycheproof style

Wycheproof District Annual Meeting had all the ingredients for success — a heated hall (on a very cold night), special guests (including a Member of Parliament, the Shire President, and representatives from local churches and schools and adjoining guide districts), parents, guiders, guides and a full roll-up of excited brownies who opened proceedings with delightful singing.

The business meeting included full reports read by leaders, local association executives and the commissioner. Local association elections were conducted successfully by a local minister. (Take heart, all who feel this is too good to be true, there were a few very familiar moments while the commissioner prodded to produce the right number of office-bearers.)

Guest speaker, Margaret Pennington, kept all entertained and informed, including the brownies who managed not to yawn and wriggle until the very last moment. And then a good country supper and chat until lights were turned out to force us into the cold night air. Congratulations, Wycheproof!



RECIPE CORNER

Bubble Pudding

1¾ cups of S.R. flour, 1 cup of raisins or soft dates, pinch salt, 1/3 cup sugar, ½ cup milk.

Sift flour and salt. Add sugar and fruit. Mix in milk. Put into greased pie-dish.

Syrup: 1 cup brown sugar, 1 tbsp. butter or margarine, 2 cups boiling water. Pour over mixture in dish and bake in slow oven for one hour.

* * *

Please send contributions for this section to Mrs W. Pye, 31 Kerferd Street, East Malvern, 3145.



PACK HOLIDAY LICENCE

The following recommendation made from the Australian Sections and Training Conference has been approved by Australian Executive:

That a Pack Holiday Licence be introduced to enable a leader to

- a. take up to 24 brownie guides from her own pack on a pack holiday;
- b. allow a leader to take pack holidays with packs other than her own who, through no fault of their own making, would be otherwise prevented from attending a pack holiday;
- c. allow a leader to act as guider-in-charge at a pack holiday shared by two packs providing leaders were included in respective staff. Maximum number of brownie guides not to exceed 24.

Conditions

- (i) Candidate to be recommended by district commissioner and camp adviser, has held her permit for 2 years and has run a minimum of 2 pack holidays since gaining her permit.
- (ii) Candidate to be assessed at a pack holiday of a combined nature, i.e., b. or c. above.
- (iii) A pack holiday may be held for a minimum of two nights, but may not be longer than a week.
- (iv) There must be one adult to six children or part thereof, with a minimum of three adults. The minimum age of the adults should be 18 years.
- (v) Brownie guiders of other brownie guides **must** be one of staff on the holiday .
- (vi) It is desirable that the brownie guider holding the permit visit the other unit/s to get to know the brownie guides. She must be prepared to assist and supervise the brownie guider/s of the other pack/s with the necessary preliminary arrangements with the Guide authorities, parents, staff and brownie guides. She is responsible for the successful running of the pack holiday.
- (vii) The health of the pack must be in the care of a competent and experienced person other than the guider-in-charge.
- (viii) There must be a minimum of three staff to include a guider-in-charge, a qualified first aider and an experienced cook, at least two other members of the staff besides the guider-in-charge must have reached the age of 18 years.

Brownie guiders considering this new camping qualification should discuss it with the district commissioner and camp adviser. The aim of this new camping qualification is to enable an experienced warranted brownie guider holding a Pack Holiday Permit to take brownies other than her own pack on a pack holiday.

—JANET COOPER, JESSIE LAMOND.

* * *

The following recommendations have been discussed and agreed to by all States:

Set Ceremonies — Pack Salute

That the Pack Salute as a set ceremony be eliminated from the Brownie programme and each pack allowed to evolve its own ceremonies for the occasions where the Pack Salute was formerly used. The Pack Salute may continue to be used if the brownies so desire, but it is no longer considered a set ceremony.

Brownie Guide Ring

Brownie packs can decide what to include in Brownie Guide Rings, such as presentation of badges, prayer reading, etc.

The extra inclusion would follow when sixers return to their places in the ring, before the brownies skip out through the gate. It is important that brownies know the set part of Brownie Guide Rings which is always the same, to be used when more than one pack meet together for a special activity, or Brownie Revels.

Six Songs or Rhymes

Six songs or rhymes may be included in the pack meeting as an optional extra in the programme, if this is the decision of the brownies.

—JANET COOPER,
Brownie Adviser.

PACK HOLIDAYS

1st Yallourn North Brownies enjoyed a pack holiday at Burnet Park.

The weather could have been a bit finer but did not prevent us from going on hikes, playing games, having treasure hunts and campfires.

We enjoyed a barbecue with parents who came out to see what the girls did while on a pack holiday.

Our menu was quickly changed several times due to the abundance of mushrooms we came across while hiking.

We paid a visit to Mrs Burnet to see all the different kinds of birds that call and see her and also "had a chat" to her prize bull.

While we were there a guide was taking a camp test. It was of great interest to the brownies to see how guides camp out of doors.

Leaders had one night off by being entertained by the brownies with a concert that they had made up by themselves.

—LINDA HALL,
1st Yallourn North Brownie Pack.

1st Warrnambool Brownies spent their pack holiday at Sherbrooke River.

They enjoyed walking to the river where guides camp, playing games and dancing.

One day they walked to Loch Ard gorge. They saw where the ship had crashed and explored a cave.

They learned to do hem stitch and made brown bags with their initials in gold for their books.

—SUSAN EVERARD,
1st Warrnambool Brownie Pack.

After our recent Pack Holiday held at Brownie Cottage the brownies each wrote an item for our Pack News Book.

These are some of their comments:

"I changed into my Brownie uniform but on the way a stone broke the windscreen and we were late."

"The bedrooms had bunks."

"We all had fun singing."

"There were 6 challenges to do and you got a gumnut tied to your necklace."

"On Saturday we went to the Falls."

"We had Brownie Ring around the Toadstool."

"On Saturday we celebrated our 10th birthday. We played party games."

"Being a Cook was fun, I liked it on the party night."

"On Sunday morning we went to the Chapel to have Brownies' Own."

"We made a wall hanging and we walked and we picked up leaves."

—M. SAWYER,
3rd Heatherdale Brownie Pack.

BROWNIE BIRTHDAY PARTY

We had our 21st birthday party recently. Our mothers came and everyone had a good time. We had a big sponge cake with brown icing, it was yummy. We played games, had fun and we had one game where we were all tangled up and we had to get untangled. Emma cut the cake because she was the oldest brownie and Beek Beek (our pack guide) helped her. All our mothers joined in with Brownie Bells and the circle was so big that it almost took up the whole room.

—EMMA, JANET, RACHEL, MIFFY and GLENDA,
1st Mount Waverley Brownie Pack.

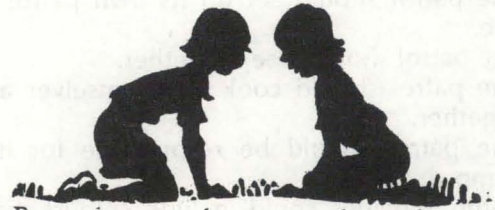


VISIT TO RIPPONLEA

Parts of our visit to Ripponlea I liked best were the pretty paths and pools, the peacocks, bridges and waterfall.

The rooms in the house were very grand and most interesting.

—NICOLE HURREN,
1st East Brighton Brownie Pack.



ENCORE '78

Brownies of 1st Traralgon Pack travelled to Highett High School to compete in a heat of Encore '78. They went by train (leaving home at 8.00 a.m. on a cold, foggy morning) and on foot (they had a 3-kilometre walk to the hall from Highett station). They broke the walk to stop for lunch.

They thoroughly enjoyed the variety of acts by brownies, guides and ranger guides and were able to stay long enough to hear themselves announced winners in the Brownie Unit section before hurrying away on the long walk back to catch their train home.

This busy day ended at 9.15 p.m. when the very tired but proud and excited brownies arrived back in Traralgon.

—FLORA JONES,
JOAN PATTISON,
1st Traralgon Brownie Pack.

GET GOING



GET GUIDING

After a month of promoting Guiding to the public, it is time to look at what we are doing with Guiding within our section. What are our girls "getting" from Guiding?

In January at the Australian Section's Conference the following recommendation was proposed, and has been accepted.

THAT COMPANY CAMPING IN THE PATROL SECTION BE BASED ON PATROL CAMPS.

Interpretation of Patrol camps is that — where possible —

The patrol in camp should be the same patrol as in the company, irrespective of numbers attending.

The patrol should set up its own patrol campsite.

The patrol should sleep together.

The patrol should cook for themselves and eat together.

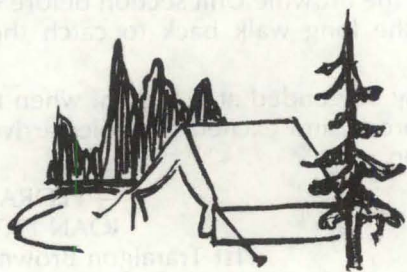
The patrol should be responsible for its own camp duties.

Camp activities could include colours, bathing/showering facilities.

Purchase of food could be done on a Company basis.

What does this mean to us?

Of course, there are a number of guide companies whose camping is already strongly based on patrol camping, but for those of you who think you are not yet "sufficiently experienced", here are some thoughts on the subject.



PATROL CAMPING

Robert Baden Powell based the Guide and Scout Movements on the Patrol System. It is interesting to read his early writing on how this system fits into camping.

From "B.P.'s Outlook", October 1909.

"The object of a camp is (a) to meet the boy's desire for the open-air life of a scout, and (b) to put him completely in the hands of his Scoutmaster for a definite period for individual training in character and initiative and in physical and moral development.

These objects are to a great extent lost if the camp be a big one. The only discipline that can there be carried out is the collective military form of discipline, which tends to destroy individuality and initiative instead of developing them.

So it results that Scouts' camps should be small — not more than one Troop camped together; and even then each Patrol should have its own separate tent, at some distance (at least 100 yards) from the others. This latter is with a view to developing the responsibility of the Patrol Leader for his distinct unit. And the locality of the camp should be selected for its Scouting facilities."

From "B.P.'s Outlook", May 1919.

". . . that is, where they prepare their own encampment even to the extent of previously making their own tents and learning to cook their own food.

Then, by pitching of tents in separate sites and selected nooks, by Patrols as far as possible, the arranging of water-supply and firewood, the preparation of bathing places, field kitchens, latrines, soak and refuse pits, etc., the use of camp expedients, and the making of camp utensils and furniture, will give a keen interest and invaluable training."

With the change of decades, girls (and boys) are maturing sooner, education has made them more capable in many ways and leads them to expect to be consulted about things which affect

them. Yet, in too many Victorian companies, not enough use is made of the opportunity to Patrol Camp.

In most camps the company camps as one group. The girls usually carry out duties as patrols or patrol groups (i.e., girls working in groups of 5 or 6 and called a "camp patrol").

The adult Q.M. is in charge of cooking and the girls assist — the degree of involvement depends on the menu, the Q.M., and the number being catered. Meals are eaten in the one large company group. For most other duties — "mess", "wood and water", etc. — the patrols also relate to an adult for supervision and instruction.

Sleeping arrangements frequently are in "friendship" groups irrespective of patrol membership. This may be convenient because of tent sizes, but also means less responsibility for patrol leaders.

Working as a company means economy in catering and equipment. Girls can be organised, trained and controlled more efficiently.

But — is our aim to camp efficiently, or is it as B.P. wrote, "for individual training in character and initiative"?



I have been taking guides to camp since 1949 and have worked with many variations of "patrol camping".

These variations have been based on the following:

1. The patrols are REAL patrols (i.e., they are the same patrol as for the rest of the year, irrespective of the number attending camp.)
2. They have their own tent and camp on their own site with their own patrol equipment of fire, cooking gear, etc. Latrines have been shared centrally and usually we use central "showering". If a patrol is small (e.g., 2 or 3 members attending) we have had two patrols sharing the same site, but they work as a patrol of 2 or 3 girls taking turns to cook, etc..
3. The patrol always sleeps together with the patrol leader responsible day and night. We have 10 x 12 ridge tents, but also use two smaller tents for the larger patrols with the patrol second in charge of the second tent.
4. The patrol does its own cooking. Menus have always been simple enough for the girls to manage with a minimum of adult advice.

At most camps catering has been done centrally and food issued daily or before each meal in patrol-sized portions for the girls to prepare, cook and serve. Adult leaders usually eat with patrols on a rotating system.

Over the last year I have been learning the variations needed when 12- and 13-year-olds replace the 14- and 15-year-olds as patrol leaders. They are needing a higher proportion of adult support in the setting up of a camp and a more watchful eye on food preparation — but they can still "do it for themselves" — and they want to.

So — how about YOU trying "patrol camping" at your next company camp?

—YVONNE JAMES.

PIONEER PATROL CAMP

About 90 guides from Wimmera Region in patrols of six (plus leaders) attended a "Pioneer Patrol Camp". We had to make up a song about a pioneer for campfire, and did some challenges that would help inspire the Bushman's Challenge. The Venturers organised an afternoon with sleigh rides and obstacle courses. It was a very enjoyable camp — thanks to "Kara" for her help.

—E. BALLINGER.

RANGERING AROUND

NEW SOUTH WALES MOOT

Five Victorian rangers and ranger-guides recently attended the New South Wales Ranger Moot, 1978.

Travelling to Sydney on the famed Spirit of Progress, we had an interesting time explaining who we were (in full uniform) to countless people, and had the predicted "very little sleep".

Throughout the weekend much time was spent in discussion. We learned a lot about the New South Wales organisation and were able to give back as much information about the Victorian ranger section. As all rangers and ranger guides in Australia are adjusting to the exciting new age changes, it was great to be able to exchange ideas, support and encouragement.

As well as open sessions, elections, discussion groups, brainstorming and fixture-planning (found at most ranger conferences), we also enjoyed an Outward Bound film, very interesting speakers and Scottish dancing.

Returning home very tired but grateful for the terrific hospitality shown to us and for friendships made, we spent another night on the Spirit of Progress, bound for Melbourne.

The following weekend was the Victorian Ranger Section conference and it was marvellous to have four New South Wales rangers present as a result of our visit. We hope this interstate 'visiting' will continue and strengthen — for the benefit of rangers, ranger guides and leaders.

J.M.

RANGER LEADERSHIP WEEKEND

Weekend — 23rd-24th September.

Times — 9.30 a.m. to 4.30 p.m. daily.

Location — Downstairs training room, Guide Headquarters.

Training in leadership skills for ranger guides and rangers who are working on Leadership certificates and any who are interested in learning leadership skills.

Application forms will be available with the August circular and must be returned with \$1.50 training fee and stamped self-addressed envelope to the Training Department, Guide Headquarters, by 9th September.

RANGER COUNCIL MEETINGS

These will be held at Headquarters at 7.00 p.m. on Wednesdays 2nd August, 6th September, 4th October, 1st November, 6th December (unless otherwise notified). If your unit is unable to be represented, please telephone 63 7911 during the meeting.

KURINGAL

This year Kuringal comes to you from Donessen Rangers. Please help us maintain the high standard—send articles to Kuringal, c/o Headquarters, by 14th of month, or telephone Jenny (337 9709) or Rosemary (306 6560) with suggestions or queries.

HOW TO TALK YOURSELF INTO SUCCESS

WHERE? — Guide Headquarters.

WHEN? — 30th September.

Guaranteed fun for everyone. You will never again be lost for words.

Watch August newsletter for entry form and further information.

CORRECTION — RED CROSS CANOE RACE

Red Cross Mini Marathon Canoe Race will be held on 21st October, 1978, not 30th September as stated in July issue.

MOBILE CAMP

Twenty-six ranger guides and four leaders from Doncaster, Donvale, West Doncaster and Warrandyte left Melbourne for a five-day mobile camp around Daylesford and Hepburn Springs.

Temperatures of 2° and one inch of rain overnight failed to dampen our spirits because we had great fun hiking around the area, exploring loggers' huts, climbing look-outs, tasting the mineral springs, seeing Breakneck gorge and cooking our lunch in the crater of an extinct volcano.

We all made lots of new friends and came home tired but happy.

—MANDY MITCHELL,
Donvale Ranger Guide Unit.

WEST AUSTRALIAN INTERNATIONAL GATHERING, 1979

During 1979, Western Australia will celebrate its 150th Anniversary, and already the State Government has great plans to make this a year to remember. The West Australian Girl Guides Association will be joining in these celebrations by having an INTERNATIONAL GATHERING from 26th August to 9th September, 1979.

After an official opening at Paxwold on 26th August, buses will leave on Monday, 27th August, to visit historical sites in the south-west of the state. At the conclusion of these tours members will camp at Paxwold for the final campfire, and will be billeted in the metropolitan area for a further four days, to enable them to see something of the city of Perth and to attend the INTERNATIONAL CONCERT to be arranged by the Girl Guides Association of Western Australia.

Invitations to this gathering have been issued to members of overseas countries, and an invitation has been received for ranger guides, rangers and young leaders in Victoria to attend.

Ranger guides, rangers and young leaders in the 16- to 25-year age group, and ranger guide leaders, no age restriction, may apply now to the Secretary to Advisers, Mrs J. Thompson, Girl Guide Headquarters, 20 Russell Street, Melbourne, for application forms. Please send a stamped, self-addressed envelope.



HALLOWE'EN

Come to an eerie "HALLOWE'EN PARTY" at Girl Guide Headquarters, 20 Russell Street, Melbourne, on Friday, 27th October, 7.00 p.m.-11.00 p.m.

An evening where you will brush shoulders with witches, ghosts, warlocks and ghouls, and skeletons will run icy fingers up and down your spine.

Come if you dare!

Application forms in August Ranger Circular.

INITIATIVE COURSE

16th-17th September at Gilwell Park, Gembrook.

Are you looking for something different? What about testing your skills during this weekend when you will be able to use your knowledge of mapping, first aid and pioneering and lightweight camping. Applications were with May Ranger Circular. For further information contact Alison Boyes, 53 Charlton Street, Mount Waverley, 3149 (277 3408).

OPENING OF BOATING SEASON

At the Ranger Section Sailing School, Jetty Road, Sandringham, on Sunday, 22nd October, 1978, 10.00 a.m. - 3.30 p.m.

MATCH OF THE YEAR

A cricket match will be held between the State Commissioner's team and the Ranger Section on Sunday, 8th October, at "Glenaroua", Broadford. This year **we must win** — so start gathering support and let "Karingal" Ranger Guides know how many can take part — Wendy Ashworth, 55 Turner Road, Langwarrin, 3910, will be pleased to hear from you.

PRACTICAL DAY FOR LEADERS

Fingers were crossed for fine weather as outside activities, archery, line map course and orienteering had been included in the programme for South Metropolitan Region's Practical Day for Leaders.

Moorleigh Hall was used for a fascinating demonstration of "bits and pieces". Imagine knitting up plastic bread packages to cover coathangers, or cream bottle tops (plastic) to make a baby's rattle, or folding a complete Readers Digest to make the skirt of a doll or angel. There were many more ingenious ways shown of using what we may discard as rubbish.

East Bentleigh Hall had displays from Jumbunna patrol leaders' camp, lightweight hiking, camp blankets, embroidery, macrame, brass rubbing and wood chip carving. All tremendous.

The scout hall was another interesting place to visit, with many and varied pack emblems; new and interesting books on a wide variety of subjects; apple faces and animals, etc, cleverly made of fruit, sweets and vegetables; accident action, which was most helpful; an expert passing on her knowledge, etc., of native plants. We were shown how to read maps. Then there was stencilling, A.B.L.E., more camp blankets and a bush band (Cheltenham Guides). Next on the programme was an interesting and instructive session on bush survival (Search and Rescue Branch, Victoria Police).

To warm us up we then had folk and country dancing, a delightful dinner (a credit to the Bentleigh Local Association), followed by a camp fire to round off this interesting and enjoyable day.

—P.C.

TREFOIL TALES



At their recent meeting, **EASTERN SUBURBS** Trefoil invited Miss Dorothy Goodenough to speak and show slides of a trip she made by ship to Antarctica. One interested listener was a member of **TWIGS** Trefoil who has also made the one-day trip by air.

That evening was **TALLARINGA's** annual meeting and the speaker was Rev. Peter Musgrove, who showed us slides of Peru and told us some of the history of that fascinating place.

I was with Tallaringa when they helped wrap Matilda and there met members from **COOPER** and **PORT PHILLIP** lending a hand. The ladies from **TWIGS** must be there every month judging by the efficient way they tie up the bundles of Matildas.

Then came the Commissioners' Open Day and lunch was prepared and served by **PORT PHILLIP** Trefoil.

Wherever you go you can find Trefoil people helping in some way. A brownie's mother recently asked, "What is Trefoil — are they the 'oldies'?" Perhaps we are the oldies, but we are always prepared to help when asked. If you need help, why not ask your local Trefoil Guild?

—M.S.

BADEN-POWELL RETIREMENT HOMES PROJECT

Both the Baden-Powell Scout Guild and the Trefoil Guilds have approved the project and endorsement has been received from the Girl Guides Association executive.

A cluster of 12 units will be available to us within a Church of England Retirement Homes board project catering for 380 residents with nursing home accommodation for 60 and hospital accommodation for 60.

Units will be available for purchase by former Guiding and Scouting personnel with increasing care culminating in total care as requested by guild members.

The whole concept will be commenced and finished within a stipulated time.

Unfortunately, the land on which the board had an option has been "frozen", but the board is now looking at land in the Berwick-Narre Warren-Dandenong area at less cost, with all amenities, and within reasonable distance of freeway, railway and shops. Land at Doncaster and Warrenwood is also being considered. We just have to wait a little longer.

Trefoil Guilds have arranged luncheons, jumble sales, trash and treasure markets, and orders have

been placed for tea towels featuring our Baden-Powell Homes project emblem.

Some have sent donations towards the project as a 'thank you' for many happy years spent in guiding.

Please let us know what your thoughts are regarding the Berwick-Narre Warren-Dandenong area — let us know of guild members who are willing to hem tea towels and use the "waiting time" to think and do something financially or otherwise to help this, our Trefoil and Baden-Powell Guilds' project.

—L. GREGORY
(telephone: 20 3082).

KISMET

I'm going "home" to England
to live amongst my brothers and sisters,
to live close to my daughter.

I have many varied memories
of Guiding activities and fun,
of Guiding friends in Australia.

I am taking many precious reminders,
of Brownie meetings and outings,
revels and pack holidays.

I have camped with Guides in the rain,
tramped, climbed fences, drunk creek water,
tied knots, worked hard and had fun.

I've shared leadership, taken responsibility,
laughed and sung around camp fires,
rejoiced and groaned at times.

I take with me very fond memories
of my friends of West Metropolitan,
of Extension Auxiliary members.

I became a Trefoil member,
I have been surrounded by tea towels,
and more tea towels, and still more tea
towels.

I have entered the sober portals of State Council,
and even been 'written up' in Matilda,
and mentioned in Retirement Project!

I leave Australia very humbly,
thankful for all my Guiding opportunities,
grateful for all my many friends.

I pray that all these Guiding friends
will remember me for what I am
and not as just the 'teatowel trefoiler'!

All inquires for teatowels can now go to Mrs G. Ludwick, 8 Irvine Street, Deer Park, 3023.

—MAY TOWNSEND.
(General Od-Bod., Deer Park).

KNOW YOUR REGIONS

Western Border Region

Western Border Region is in the far-western corner of Victoria. It extends from Edenhope in the north to Portland in the south, from Dartmoor on the South Australian border to Dunkeld, the Gateway to the Grampians.

The whole area was once subject to volcanic eruptions and now there are many extinct volcanoes between Mount Gambier (in South Australia) and Warrnambool. Of the many caves throughout the whole district, the Princess Margaret caves are the most well-known.

The coastline, with its numerous hidden reefs and rugged cliffs, has been the cause of many shipwrecks.

Bushfires also ravaged the area in 1851 and the Western District was practically wiped out. The whole region now produces fat lambs, sheep, beef cattle, dairy produce, along with potatoes, onions, fruit, etc.

The region is made up of three divisions. **Far-Western Division** takes in the towns of Balmoral, Casterton, Coleraine and Edenhope. **Henty Division** involves Dartmoor, Heywood and Portland, and **Wannon River Division** includes Cavendish, Dunkeld, Hamilton and Macarthur.

The first settlement in Victoria was made at Portland by the Henty brothers in 1834, but the first white man to live there was a Captain Dutton. It was then used as a whaling station and Captain Dutton lived there permanently with the aborigines. When the Hentys built their residence for themselves and their staff, at their own expense, they still had to buy the property from the New South Wales Government. They extended their whaling business and farming interests for many miles around the area. The first piece of land ploughed in Victoria was where the present Richmond Henty Hotel stands, and the first wool sold in Victoria was sold in Portland. Today the town is a thriving deep-sea port with several industries and it is a popular seaside resort because of its place in history. Fishing is an attraction around the harbour and surf fishing around the coast. The Bridgewater Lakes are fresh water and good for trout fishing and are separated from the sea at Discovery Bay by the sand-dunes. The Cape Nelson lighthouse is one of the seven remaining

lighthouses in the States (including Tasmania) still in operation and is visited daily by tourists. The Mount Richmond National Park, with its emus, kangaroos and many varieties of wild life, also attracts many visitors. The town has a number of buildings of bluestone quarried from local stone.

Guiding started in Portland in 1927 when the first Commissioner for Glenelg, Mrs M. Winter-Cooke, presided over the first meeting. There were then thirty-two guides in four patrols forming the 1st Company. In 1934 guides took part in the Centenary of Portland celebrations and during the war a Cycle Corps was formed. Lady Baden-Powell visited the town in 1946 and in 1958 a big region rally was arranged and had to be held in the hospital grounds as Lady B.P. had become a patient there.

The capital of the Western District, Hamilton, is situated on the Grangeburn. It was once known as the Grange and in 1880 it was also known as the town of Three Nines because it had Nine Churches, Nine Hotels and Nine Policemen! It is now famous for its art gallery, college, home industries and the newly-formed Lake Hamilton. It is also a large market town for cattle and sheep sales.

Guiding started here in 1923 and was able to continue uninterrupted throughout the war (2nd World War). "Murndal", the original homestead of the Winter-Cooke family, stands on the Wannon River and here the first training week was held in 1923 by two guiders sent from England. The first mounted guide company formed in the Wannon area had to travel seven miles to their meetings.

On the outskirts of Hamilton are Wannon and Nigretta Falls, both beauty spots. Between these the region has a camp-site, "Malangeeba", shared with the Scout Association and used regularly for trainings, camps, etc.

Fossilised remains of shells and sharks' teeth have been discovered at different times along the Grangeburn, one shell in particular now lies in the Melbourne museum and is the only one of its kind in the world. All this proves that the area was once under the sea. Nearby Dunkeld is a beautiful spot, nestling at the foot of Mt. Sturgeon



in the Grampians. This part of the countryside is world-renowned for its wildflowers in spring. The undulating farmlands of Casterton and Coleraine are very picturesque.

Casterton Brownie Pack celebrated its 50th birthday this year, although the guide company started in 1926. There was a ranger company in 1929 and in 1930 the first local association was formed. Coleraine District bought the old town railway station a few years ago and converted it into a guide hall complete with open fireplace!

This is Adam Lindsay Gordon (the Australian poet) country, although he was more famous in the Western District for his outstanding horsemanship, especially in the Great Western Steeplechases which were held at Coleraine.

Cavendish, Edenhope and Macarthur are rich pastoral districts. Guiding here is very enthusiastic as much travelling is involved when attending division or region activities.

Balmoral is widely spread and surrounded by large properties. Residents are very proud of their high school, ultra-modern and one of only two of its kind in the state. Special permission was received from the Queen for the use of the Balmoral tartan for the making of school uniforms.

At the other end of the region is Dartmoor, situated on the Glenelg River only twelve miles from the South Australian border. Between Dartmoor and the coast are many acres of pine forests, which supply the sawmills to provide the main industry of the town. Pleasure steamers used to make fifty-mile trips up the Glenelg from Nelson. This area was part of the area travelled by Major Mitchell in his exploration of the South-Western Region.

Guiding started in Dartmoor in 1929.

Heywood, situated on the Fitzroy River, is also a mill town. Six miles west are the new Seppelts vineyards which are now proving a great success. There are beautiful bush walks around this area. This is also a grazing and dairying area. Guiding started in Heywood in 1929 too.

Historically speaking, the Western District has much to offer in both towns and homesteads and the Western Border Region is also proud of the place it holds in the history of Guiding.

—J.G.

* * *

EXTENSION AUXILIARY ANNUAL MEETING

The 26th Annual Meeting of the Extension Section Auxiliary will be held at Guide Headquarters on Thursday, 10th August, at 8.00 p.m. Guiders of Extension units will speak about their work, and Mrs Hutchinson will give an illustrated talk on the progress of "Iluka", Shoreham.

MARGARET ALEXANDER

The death of their much-loved leader, "Rufus", saddened members of 5th Nunawading Brownie Pack.

However, they have happy memories of a very courageous leader who trained and encouraged their team to win a silver medal for semaphore in the Mini Olympic Games.

—M.S.

ORRVALE CELEBRATION

Fifty years of guiding in Orrvale will be celebrated at the Guide Hall, Poplar Avenue, on Sunday, 20th August, at 1.30 p.m.

Anecdotes suitable for inclusion in commemorative booklet would be welcomed by Mrs Kaye Guppy, Orrvale R.S.D., Shepparton East, 3631, and further information about celebrations may be obtained from her.

COBRAM CENTENARY

Cobram Guides will hold a reunion and campfire on 21st October, 1978, to celebrate the Cobram Centenary.

Former guides and leaders are invited to attend and forward names and addresses to Mrs R. Ritchie, Wirbil Street, Cobram, 3644 (telephone 72 1417).

CONGRATULATIONS

Our heartiest congratulations to Mrs Dorothy Halligan and Mrs Joan Moors on being awarded their Training Diploma, and Mrs Jeanette Barrett, Ranger Training Certificate, and to Miss Patricia Morecroft and Mrs Dorothy Woolley on becoming members of the Mornington Region Training team, along with Mrs Eunice O'Donnell and Mrs Jane Scarlett.

BALANCING THE BUDGET (Continued from Page 35)

Some of our members express concern that, by increasing our fees, we are forcing underprivileged children away from our ranks. The Executive Committee is very much aware of this risk and it remains adamant that no girl who wants to be a Guide should be prevented from joining for financial reasons. Where there are cases of hardship, membership fees will be waived if all details are made known to us. Guiding is for everyone and we must try to see that every girl who wants to join us — can. It is only by all working together that Guiding will continue to prosper and be available for all those who wish to join.

TRAINING CALENDAR

Commissioners and unit leaders with the necessary experience are welcome to apply for **ANY** training. Applications should be sent **prior to the closing date and be accompanied by the training fee and a stamped, self-addressed envelope.** Training fee is \$3.00 unless otherwise stated.

Stage 1 Leadership Course

Eltham: Weekends 28th-29th October and 18th-19th November, times 10.00 a.m. to 4.00 p.m. Applications to Mrs M. Teape, 33 Sparks Avenue, Fairfield, 3078, by **6th October.**

Headquarters: Tuesday 17th, 24th, 31st October, 14th, 21st November, times 10.00 a.m. to 3.00 p.m. Applications to Training Department, Guide Headquarters, by **30th September.**

Katunga: Weekends 7th-8th October and 28th-29th October, times 10.00 a.m. to 4.00 p.m. Applications to Mrs M. Murphy, 73 Balaclava Road, Shepparton, 3630, by **22nd September.**

Mildura South: Weekends 30th September-1st October and 4th-5th November, times 10.00 a.m. to 4.00 p.m. Applications to Mrs S. Smith, 10 Barry Avenue, Mildura, 3500, by **8th September.**

Moorleigh: Weekends 14th-15th October and 28th-29th October, times 10.00 a.m. to 4.00 p.m. Applications to Mrs P. Jones, 14 Walker Grove, Cheltenham, 3192, by **25th September.**

Mornington: Weekends 16th-17th September and 14th-15th October, times 10.00 a.m. to 4.00 p.m. Applications to Mrs W. Rae, "Craig Arran", 285 Hastings Road, Somerville, 3912, by **30th August.**

Skipton: Weekends 14th-15th October and 11th-12th November, times 10.00 a.m. to 4.00 p.m. Applications to Mrs G. Swainston, 13 Wright Street, Skipton, 3361, by **25th September.**

Wattle Park: Weekends 23rd-24th September and 14th October and 28th-29th October, times 10.00 a.m. to 4.00 p.m. Applications to Training Department, Guide Headquarters, by **30th August.**

West Metropolitan Region: Weekends 28th-29th October and 18th-19th November, times 10.00 a.m. to 4.00 p.m. Applications to Mrs R. Bell, 10 Debenham Drive, St. Albans, 3021, by **6th October.**

Stage 2 Programming and Activities for WARRANTED Leaders

Creswick: Weekends 7th-8th October and 4th-5th November, times 10.00 a.m. to 4.00 p.m. Applications to Mrs G. Platt, 2 Beresford Crescent, Darley, via Bacchus Marsh, 3340, by **18th September.**

Glenroy: Weekends 16th-17th September and 4th-5th November (Note: change in dates), times 10.00 a.m. to 4.00 p.m. Applications to Miss M. McLeod, 3 Glenview Road, Strathmore, 3041, by **28th August.**

Headquarters: Wednesday 11th, 18th, 25th October, 1st, 8th November, times 10.00 a.m. to 3.00 p.m. Applications to Training Department, Guide Headquarters, by **25th September.**

Korumburra: Weekends 16th-17th September and 21st-22nd October, times 10.00 a.m. to 4.00 p.m. Applications to Mrs J. Gaudion, 32 Blackmore Avenue, Leongatha, 3953, by **28th August.**

Merbein: Weekends 16th-17th September and 28th-29th October, times 10.00 a.m. to 4.00 p.m. Applications to Mrs S. Smith, 10 Barry Avenue, Mildura, 3500, by **28th August.**

Accent on Leadership Special Subjects for guiders who have completed Stage 2 training.

Rosebud: Weekends 14th-15th October and 11th-12th November, times 10.00 a.m. to 4.00 p.m. Applications to Mrs W. Rae, "Craig Arran", 285 Hastings Road, Somerville, 3912, by **27th September.**

Pack Holiday Course

Headquarters: Weekend 23rd-24th September, times 10.00 a.m. to 8.00 p.m. Saturday and 9.00 a.m. to 4.00 p.m. Sunday. Applications and \$4.00 to the Training Department, Guide Headquarters, by **1st September.**

Mornington Region: Weekend 4th-5th November, times, location and fee to be advised. Applications to Mrs W. Rae, "Craig Arran", 285 Hastings Road, Somerville, 3912, by **16th October.**

Campcraft Course

Camperdown: 23rd-24th September, times 9.00 a.m. to 9.00 p.m. Saturday and 9.00 a.m. to 4.00 p.m. Sunday, plus weekends 7th-8th October at **Camperdown** and 28th-29th October at **Port Campbell**, and 25th-26th November at **Colac.** Times 9.00 a.m. Saturday to 4.00 p.m. Sunday. Note: Fee for weekends to be advised. Applications and \$6.00 to Mrs A. Fraser, 18 Hampden Street, Terang, 3264, by **1st September.**

Headquarters: 12th, 19th September and 26th September and 10th October at **Cheltenham**, times 7.00 p.m. to 10.00 p.m. plus 14th-15th October at **Donvale** and 18th-19th November at **Wattle Glen** and 2nd-3rd December at **Britannia Park.** Times for weekends 9.00 a.m. Saturday to 4.00 p.m. Sunday. Note: Cost of weekends not included. Applications and \$6.00 to Training Department, Guide Headquarters, by **29th August.**

Ranger Lightweight Campcraft Course

Weekend 7th-8th October (indoor), location to be advised, plus 4th-5th November at **Wattle Glen** and 25th-26th November at **Tapestry.** Note: Cost and times of weekends to be advised. Applications and \$4.50 to Training Department, Guide Headquarters, by **18th September.**

Mapping

Benalla: Weekend 16th-17th September, times 9.00 a.m. to 9.00 p.m. Saturday and 9.00 a.m. to 4.00 p.m. Sunday. Note: Fee to be advised. Applications to Mrs M. Gorman, 33 Batten Street, Seymour, 3660, by **28th August.**

Bushcraft Tour Reunion

Fryerstown, near Castlemaine, 6th-7th-8th October. Note: family and friends welcome. Private transport — approximate cost \$15.00. Further information may be obtained from Mrs J. Hewlett, 1259 High Street, Malvern, or Mrs P. Avent, P.O. Box 81, Aireys Inlet. **Please send a stamped self-addressed envelope for reply.**

Camp First Aid Course

Overport: 3rd, 10th, 17th October, times 8.00 p.m. to 10.00 p.m., plus 24th October renewal test at **Mornington**. Note: Fee to be advised. Applications to Mrs W. Rae, "Craig Arran", 285 Hastings Road, Somerville, 3912, by **19th September**.

Q.M. Course

Chadstone: Weekend 11th-12th November, times 9.00 a.m. Saturday to 4.00 p.m. Sunday. Applications and \$6.50 to Training Department, Guide Headquarters, by **17th October**.

Oak Park: Wednesday 4th, 11th, 18th October, times 7.45 p.m. to 10.00 p.m. Applications to Miss M. McLeod, 3 Glenview Road, Strathmore, 3041, by **18th September**.

Extension Guiders' Weekend

Parkdale: 13th-15th October, times 7.30 p.m. Friday to 3.30 p.m. Sunday. Note: Any guider who has extension guides in her unit or who is interested in learning more about the Extension section is welcome to attend all or part of this weekend. Cost \$8.00 full time or \$3.00 per day. Further information regarding this weekend may be obtained from Mrs S. Lang, 12 Princetown Road, Mt. Waverley, 3149 (277 3795). Closing date **15th September**.

Ceremonial Course for GUIDE GUIDERS only

Tatura: Saturday, 21st October, times 10.00 a.m. to 3.00 p.m. Applications and \$1.00 to Mrs J. Murphy, 73 Balaclava Road, Shepparton, 3630, by **2nd October**.

Facts 'n Fun Day for Local Association Members

Bendigo: Wednesday, 4th October, times 10.00 a.m. to 3.00 p.m. Applications and \$1.50 per local association to Mrs B. Whelan, 8 Hope Street, Kangaroo Flat, 3555, by **20th September**.

Dandenong: Tuesday, 26th September, times 10.00 a.m. to 3.00 p.m. Applications and \$1.50 per local association to Mrs K. Wilkie, 8 Olive Street, Dandenong, 3175, by **5th September**.

Headquarters: Thursday, 19th October, times 10.00 a.m. to 3.00 p.m. Applications and \$1.50 per local association to Training Department, Guide Headquarters, by **1st October**.

Summer Training Week

Britannia Park, Yarra Junction, 24th-30th January. Subjects to include Stages 1 and 2, Special Subjects including Accent on Leadership (Stage 3), Pack Holiday, Campcraft and Ranger Lightweight training. The above courses will be included **only** if there are sufficient applications. **Note: If you plan to attend please send your applications in NOW.** — don't wait until the closing date, we need to know immediately so that the programme can be planned to include **your** requests.

Applications to Training Department, Guide Headquarters, by **10th November**.

JUMBUNNA '78

Dear Matilda,

Good times are made for sharing, so I thought I would write a little about the good time I had at "Jumbunna '78". After my name had been submitted with some other guides in Maroondah Region, I went to an interview. About 10 days went by until I received a letter saying I was selected to represent my region. The Local Association held a cake stall to help me to raise money towards the cost. The other companies in my region helped me by preparing material for the scrap book which I was asked to take.

The weeks flew by, and soon I was at Spencer Street Station waiting to go. We arrived at Ballarat and settled in quickly, making many new friends and exploring new crafts. We had lectures on patrol leaders' duties, programming, teaching a recruit and getting on with people, which I think is important.

We slept in dormitories at a boarding school, with our House mum who looked after us. We took part in many crafts, such as leatherwork, raffia, making musical instruments and silk-screen printing. Ballarat Rangers gave us a taste of rangering with canoeing, archery, camping, service, a staged accident and a commando course. As a group, all 140 of us, put on a drama night about the gold rush, and we also took part in an enormous State Campfire. We even featured in the Ballarat paper and on the local news.

All too soon the week was over and our last night arrived. The friendly people of Ballarat took us to their homes for dinner, before farewelling us on our train home. Many addresses were exchanged and many friends made.

At Spencer Street Station our families met us. I was glad to be with my family again, but sad to say goodbye to my new friends. I hope to see them all again.

Since returning I have held a night at my guide hall to share my new ideas and enthusiasm with about 100 guides from my region, who helped me to go to "Jumbunna '78".

—GABRIELLE VENOSTA,
1st and 3rd Forest Hill Guide Company.

CONGRATULATIONS to the recipients of the following:

Guider Long Service

(20 years): Mrs G. Ludwick, Deer Park; Mrs W. Maddox, Heywood.

(10 years): Mrs N. Toy, Donvale; Mrs E. M. Nichols, Mentone; Mrs B. O. Burden, Mentone; Mrs D. Hodgson, Mitcham; Mrs J. Knight, Stawell; Mrs F. Macleod, Carrum; Mrs E. J. Bryant, Mildura; Mrs E. Shadwell, Clayton; Mrs J. Polkinghorne, Heywood.

Combined Long Service

(20 years): Mrs B. Weaver, Deer Park; Mrs D. Goudie, Highton.

(10 years): Mrs J. Collins, Wattle Park; Mrs R. F. Pryor, Mt. Waverley; Mrs L. J. Kay, Rutherglen.

Local Association Long Service

(10 years): Mrs N. Powell, Clayton; Mrs S. Stewart, Birnsdale.

* * *

Thanks Badge

Mr E. Jennings, Mildura; Mr W. P. Baker, Red Cliffs; The Lions Club, Stawell.

APPOINTMENTS AND WARRANTS

A warm welcome is extended to the following:

Division Commissioners

Mrs T. W. Bruns, Kerang; Mrs W. J. Tope, Wannon River.

District Commissioners

Mrs M. Willersdorf, Murrayville; Mrs H. J. Bunstun, Underbool; Mrs K. Damon, Hampton Park; Mrs A. Keert, South Croydon; Mrs K. J. Camm, Moe; Mrs A. R. Trimble, Gisborne; Mrs E. W. Leembruggen, Sale; Mrs I. Samuel, Syndal; Mrs J. W. Suckling, Daylesford; Mrs D. Lynch, Mt. Evelyn; Mrs E. Bourne, Bendigo South; Mrs R. K. Perry, Dareton; Mrs E. J. Van Boven, Leongatha; Mrs B. R. Vella, Sunshine; Mrs L. Prager, Burwood; Mrs R. D. Gaunson, Eltham North; Mrs K. J. Birkett, Doncaster East; Mrs D. L. de Lacy (Assistant), Doncaster East; Mrs M. D. C. Crombie (Assistant), Sunshine.

Ranger Guiders

Mrs J. F. Mitchell, Donvale Rangers; Mrs T. L. Holmes, Carrum-Bonbeach Rangers; Mrs G. R. N. Miller, Glen Waverley Rangers; Mrs W. M. Maddox, Heywood Rangers; Mrs P. A. Bloor, Numurkah Rangers; Mrs H. A. Mason, Benalla Rangers.

Except for articles where copyright restrictions are indicated, material in "Matilda" may be reprinted in Guide and Scout magazines without prior permission. A credit line would, however, be appreciated.

Assistant Ranger Guider

Mrs R. Hamblin, Heywood Rangers.

Guide Guiders

Mrs H. Van Wegen, 1st Coleraine; Mrs J. Twomey, 1st Oak Park; Mrs I. Findley, 1st Wheelers Hill; Mrs L. Pearson, 1st Beeac; Miss M. Berry, 1st Warrnambool; Mrs R. Luff, 1st Nagambie; Mrs F. K. Death, 1st Cardross; Mrs B. L. Taylor, 1st Warracknabeal; Mrs R. Middlebrook, 2nd Altona North; Mrs C. A. Pert, 1st Stawell; Mrs S. J. Bolton, 2nd Melton; Mrs E. Nothard, 2nd Deer Park; Mrs J. Laidlaw, 4th Templestowe.

Assistant Guide Guiders

Mrs C. P. Mitchell, 4th Glen Waverley; Mrs L. Buzzard, 1st Heywood; Mrs R. W. Schneider, 1st Cobden; Mrs C. Grice, 1st Wheelers Hill; Mrs W. B. Brown, 2nd Wheelers Hill; Mrs E. E. Wood, 1st Mooroopna; Mrs J. A. Potter, 1st Nagambie; Mrs D. S. Taylor, 2nd Chadstone; Mrs P. M. Grace, 1st Portland; Mrs G. Croft, 1st Stawell; Mrs R. J. Westheimer, 3rd Doncaster West; Mrs J. S. Seaburn, 1st Kinglake; Mrs B. G. Crumpton, 2nd Melton; Mrs K. S. Missen, 1st Melton.

Brownie Guiders

Mrs R. Taylor, 3rd Noble Park; Mrs B. Cargill, 1st Harrisfield; Miss W. J. Rietschel, 6th Glen Waverley; Mrs K. C. Kruse, 1st Shepparton; Miss D. Gardiner, 1st Malvern (Extension); Mrs S. J. Vardy, 2nd Yarram; Miss J. B. Evans, 2nd East Malvern; Mrs K. Wangman, 7th Colac; Mrs J. Horton, 1st Beaconsfield; Mrs I. Forster, 2nd Warrandyte; Miss G. Chambers, 3rd Koonung Heights; Miss R. Wilson, 1st Sunshine West; Mrs A. Argent, 4th North Ringwood; Mrs A. R. Neade, 4th Warrnambool; Miss J. Stindl, 1st Yarra Junction; Mrs F. Muller, 1st Nagambie; Mrs C. L. Smith, 1st Mentone; Mrs D. Trevelyan, 1st Chadstone; Mrs C. M. Bennett, 3rd Portland; Mrs K. McDonald, 1st Syndal North; Mrs G. Cooper, 2nd Stawell; P. J. Marks, 2nd Melton; Mrs J. McMinn, 2nd Croydon; Miss J. M. Lee, 1st Noorat; Mrs G. Nelson, 1st Waaia; Miss C. A. McSweeney, 2nd Oak Park; Mrs J. Fitzpatrick, 4th Wheelers Hill; Mrs L. Parnall, 1st Cockatoo; Mrs L. McKenzie, 1st Jeparit; Mrs J. Petty, 2nd Merbein; Mrs P. Lucas, 3rd Merbein.

Assistant Brownie Guiders

Mrs J. L. Brooks, 1st Glen Waverley; Mrs I. J. Drysdale, 2nd Heywood; Mrs S. Snowdon, 7th Colac; Mrs J. Clancy, 1st Endeavour Hills; Miss B. K. Thorn, 1st Orrvale; Mrs R. C. Williams, 3rd Koonung Heights; Mrs M. J. Lewellin, 1st Yarra Junction; Mrs E. Graafsma, 1st Eildon; Mrs D. J. Carter, 4th Warrnambool; Miss J. A. MacCulloch, 1st Allansford; Mrs K. A. Price, 2nd Melton; Mrs G. R. Davey, 2nd Cobram; Mrs E. Bremner, 1st Waaia; Mrs G. Crossley, 1st Gladstone Park; Mrs K. R. Launder, 2nd Kington Heath; Mrs R. Gemmill, 1st Nagambie; L. R. Rogers, 5th Portland; Mrs C. B. Wakeling, 1st Kinglake; Mrs P. Nicholls, 3rd Frankston.

REGISTRATIONS:

1st Myrtleford Pack, 4th Vermont Pack, 3rd Donvale Company, Ringwood Ranger Guide Unit ("Kamballa"), Rushworth Ranger Guide Unit.

RESIGNATIONS AND RETIREMENTS

We acknowledge with gratitude the services given by the following, whose Warrants have been returned:

Division Commissioners

Mrs G. Richardson, Mortlake; Mrs M. G. Schey, Doncaster Eastern; Mrs H. J. Lardner, Springvale.

District Commissioners

Mrs I. W. Johnson, Hampton Park; Mrs M. A. Elliott, Underbool; Mrs R. N. Kerr, Tempy; Mrs A. Neeld, Katamatite; Mrs M. Dore, Longwarry; Mrs H. Armstrong, Somerville-Baxter; Miss G. Buckland, Mornington; Mrs F. T. Gedye, Doncaster East; Mrs B. G. Rimington, North Balwyn; Mrs A. W. Brown, Doncaster; Mrs R. R. Robson, Great Western; Mrs E. A. Charleston, Bairnsdale; Mrs E. C. Barrett, Warragul; Mrs J. M. Parsons, Golden Square; Mrs A. M. Mundy, Orbost.

Ranger Guiders

Mrs M. J. Van Berkel, Eureka Rangers; Mrs G. Wallace, Herne Hill Rangers; Mrs R. V. Hodder, Armadale Rangers.

Assistant Ranger Guiders

Mrs F. Williams, Bentleigh Rangers; Mrs D. Steward, Pascoe Vale South Rangers; Mrs B. West, Noble Park Rangers; Mrs P. Imrie, North Ringwood Rangers.

Guide Guiders

Mrs J. M. Robertson, 2nd Altona North; Mrs C. Swayn, 1st Beeac; Mrs W. R. Smart, 1st Devon Meadows; Mrs S. Frew, 1st Coleraine; Mrs D. Hickey, 1st Spotswood; Miss L. Booth, 1st Quambatook; Mrs I. Burnell, 1st Cheltenham; Mrs A. H. Capes, 1st Noble Park; Mrs B. A. Drew, 1st Hoppers Crossing; Mrs J. F. Mitchell, 1st Donvale; Mrs G. McKinnon, 1st Cann Valley; Miss H. Douglas, 1st Jeparit; Miss L. C. Prokop, 1st Armadale; Mrs P. Anderson, 1st Merrigum.

Assistant Guide Guiders

Mrs K. L. Buckingham, 11th Ballarat; Mrs D. B. Warren, 2nd Croydon West; Mrs J. E. Vizard, 1st Warrandyte; Mrs R. Middlebrook, 2nd Altona North; Miss E. M. Pearce, 1st Beeac; Miss B. R. Smith, 1st Research; Mrs G. C. Dorr, 1st Cheltenham; Mrs H. Van Wegen, 1st Coleraine; Miss M. Berry, 1st Warrnambool; Mrs C. F. Barber, 3rd North Ringwood.

Brownie Guiders

Mrs P. A. Oldham, 2nd Aberfeldie; Mrs J. R. Hopkins, 1st Mt. Waverley; Miss J. Grauer, 3rd Balwyn (Yooralla); Miss J. Youens, 4th Cheltenham North; Mrs E. M. Stradwick, 2nd Kew; Mrs D. F. Payne, 1st Burnley; Mrs F. J. Stanley, 1st Heathcote; Mrs S. Snowdon, 7th Colac; Mrs J. N. Cowan, 1st Templestowe; Mrs C. J. Watt, 3rd North Ringwood; Miss H. R. Humphreys, 9th Ballarat; Mrs D. T. Tuppen, 2nd Ballarat; Mrs D. H. Warren-Smith, 2nd Upwey; Mrs G. L. Otzen, 1st Merrigum; Miss J. Y. Coles, 1st Chadstone; Mrs G. R. Davey, 2nd Cobram.

Assistant Brownie Guiders

Mrs J. M. McBreen, 1st San Remo-Newhaven; Mrs B. W. Grant, 2nd Cranbourne; Mrs R. Hamblin, 1st Heywood; Miss D. Gardiner, 1st Malvern (Extension); Mrs P. Nicholls, 1st Frankston; Mrs K. Wangman, 7th Colac; Miss L. Collins, 2nd Armadale; Mrs J. McMinn, 2nd Croydon; Miss J. M. Lee, 1st Noorat; Mrs L. Parnall, 1st Cockatoo.

THE GUIDE SHOP

Current prices for woven unit name tapes as follows:

Double Line Tapes 5/8"

Must be blue lettering on white tape with unit name on top and region underneath.

3 dozen	\$14.10	6 dozen	\$18.90
9 dozen	\$23.70	12 dozen	\$28.50

Add \$4.80 for each additional 3 dozen. Delivery approximately six to eight weeks. Available only in quantities as listed.

Single Line Tapes 3/8"

May be red, blue, green or black lettering on white tape for unit name only. Region tape must be blue lettering on white. These must be sewn with unit name on top and region underneath.

2 dozen	\$6.90	4 dozen	\$7.80
8 dozen	\$9.60	12 dozen	\$11.40
16 dozen	\$13.20	20 dozen	\$15.00

For larger quantities add \$1.80 for each additional 4 dozen. Delivery approximately three to four weeks. Available only in quantities as listed.

NEW ITEMS

Plastic Cover for B.P. Emblem card	each 10c
Brownie Guides (a Ladybird Series)	75c

Including how Guiding began, the beginning of Brownies, the Brownie Story and many of the activities in which Brownies take part.

The Bunyip Book Series	each \$2.25
------------------------------	-------------

(These cover Australian people, events and things.)

Australia Day	Making Damper
Granny Smith's Apples	Let's have a Pet Show
The Man with the Donkey	Gum Trees
Cicadas	Let's go Bush
Ned Kelly	Cockatoos and Galahs
Who's for a Swim	Wombats

MITCHAM ART AND CRAFT SHOW

You are invited to Mitcham District family Art and Craft show from 9.00 a.m. to 3.00 p.m. on Saturday, 16th September, in Britannia Street Hall.

Demonstrations and some sales — Copper enamelling, Asian basketware, fancy cakes, wooden toys, stamps, spinning.

Displays of art, pottery, macrame, sewing, knitting.

Buy hamburgers, soft drinks, tea and coffee.

Enquiries — Mrs Marion Marshall, telephone 873 2780.