

APRIL, 1979

VOLUME 56 NUMBER 9

13-6-79

Keep tied together
+ Do Matilda
+ Trade Shows.

Aug 78
Nov 78
Dec 78
Jan/Feb 79
Mar 79
April 79

Matilda



GIRL GUIDES ASSOCIATION OF VICTORIA



Anniversaries are usually happy occasions and this beautiful cake was a special part of the Britannia Park 40th Birthday Celebrations.

See account and more photographs on page 249.

In this issue . . .

	Page
Archives	265
Camping News	256
Extension Extracts	266
Foto Fun	253
Guides	264
Local Association Section	261
Matilda Subscription Form	267
Notices	250, 251, 266, 267, 268
Personnel Changes, etc.	270
Rangers	262
Reporting from Russell Street	248
State Commissioner's Letter	247
Supplementary Activities	252
Training Calendar	269
Training Pages	257-260
Trefoil Tales	266

MATILDA

PUBLISHED BY THE GIRL GUIDES ASSOCIATION OF VICTORIA
20 RUSSELL STREET, MELBOURNE, VICTORIA, AUSTRALIA, 3000

State Commissioner: MRS. J. N. WEST

State Secretary: MISS M. W. BARR

Assistant State Commissioners: MRS. C. S. ANJOU, MRS. W. J. B. POLLOCK, MRS. S. J. SURRY

Editor: MRS. L. I. RICHARDSON, 31 Hampshire Road, Forest Hill, 3131



From our State Commissioner

Hello Everyone,

There were many meaningful Thinking Day Services throughout the State. I attended one in Bendigo, where Bendigo Southern Division joined together to hear Miss Marilyn Lardner speak of her experiences at Sangam, our world centre in India.

I also attended the Thinking Day meeting of the Eastern Suburbs Trefoil Guild, where the guest of honour was Carine Lady Baden-Powell. I was pleased to meet these ladies who work so hard for Guiding.

I enjoyed a meeting of 1st Warrandyte Company recently. I am not often able to meet with girls in unit activities and we had a lovely time chatting together and discussing suitable avenues of service.

The Commissioners' Conference was a very happy weekend. I was pleased to introduce my Assistants to everyone, and it gave us opportunity to meet a great many people.

At conferences like this chatting together and exchanging ideas with others is so worthwhile, and I am sure everyone had a most stimulating weekend. Thank you to Edyth Kirk and Dawn Richards and their hard-working committee.

At the first State Council meeting for the year Vicki Trembath showed slides of Jamborella I, which made the camp come alive for all present, and helped bring Guiding closer to those not directly involved with the girls. Please remember that you have a wonderful source of help and interest in State Council members in your district.

Foto Fun was a wonderful presentation of photographs in the competition and displays of Guiding through photographs from all sections. Although the number of entries was small, judges were impressed with the high standard of exhibits.

Congratulations and thanks to all who helped in the organisation of this event — Robin Collins and the Public Relations Committee, the Supplementary Activities Committee under the enthusiastic leadership of Marg. McLean and Sheila Molesworth and her team who served refreshments throughout the weekend.

On the same weekend we celebrated the Ruby Anniversary of Britannia Park, and what a happy time it was for reminiscence and renewing friendships. Our property has seen many changes but the charm and beauty have been retained, due mainly to the many willing people who have shown love and care over the years.

Thank you to Elizabeth Thompson and her committee for planning the weekend and giving pleasure to so many people.

Moomba was a busy time. Our girls took part in the children's parade and also on a float in the Moomba Parade, and looked terrific. I was very proud of them.

I was happy to be at Werribee recently for the presentation of a B.P. Emblem. It is a thrill when a girl attains the highest award in the Guide Section.

Photographs of my three Assistants appear elsewhere in this issue, and I thought you might like to know a little more about them.

Jill Anjou — husband Carl, one daughter, one son. Although born in Melbourne, Jill has lived in many places, and while in Adelaide had the honour of being aide to Lady Baden-Powell during her visit to South Australia. Jill's main interests are tennis and Guiding, the whole family plays competitive tennis and both Jill and Carl are on the executive committee of the Church of England L.T.A.V.

Muriel Pollock — husband Bill, three daughters, one son and five grandchildren. Her main interests include the Uniting Church, choir, dressmaking, embroidery, gardening and reading.

Verna Surry — husband Jack, one daughter, one son. Verna's main interests are family, gardening, sport of all kinds, watching football and water-polo. Verna is interested in calisthenics, having taught gymnastics for six years.

Kindest regards to you all,

Marjorie E. West

INTERNATIONAL TRAINING FOR TRAINERS

Congratulations and thanks to all Victorians who helped raise funds to bring two Indian trainers to Melbourne for this important event. Over \$2500 has been contributed — a magnificent effort.

Display — The Australian International Committee needs some help. They are preparing a display for the International Training which is to be held at Melbourne Church of England Girls' Grammar School from 15th-24th May, 1979. Hopefully, this Display will comprise arts and crafts from every member country of the World Association of Girl Guides and Girl Scouts. If you have something that falls into this category that you purchased or were given when visiting one of these countries, would you allow the International Committee to display it for this special event? If so, would you please ring Beth Chamberlain on 435 1657 and tell her about it. The Committee is particularly interested to get things from the less frequently visited countries. Guiders, please ask your Guides also.

MOBILE GUIDE SHOP

The Mobile Shop will be at the BAIRNSDALE GUIDE HALL on WEDNESDAY, 2nd MAY. Trading hours will be between 12 noon and 7.00 p.m.

Following this, the Shop will open in the TRARALGON GUIDE HALL on THURSDAY, 3rd MAY. Trading hours here will be between 2.00 p.m. and 8.00 p.m.

Please pass the word on to the parents and all the Brownies, Guides and Rangers in your areas, so that they can visit the Shop after school or in the evenings to browse and see what is available for them.

LONES

The two liaison officers — Miss Wendy Swift (Royal Children's Hospital) and Mrs. Jean Begg (Austin Hospital) would like to hear of any Brownies, Guides or Ranger Guides who come into either of these hospitals for treatment so that contact may be made, a Guide 'Hello' given and help offered. Please send details to Miss Wendy Swift, 2B Rubens Grove, Canterbury, 3126, or Mrs Jean Begg, 31 Linden Avenue, West Heidelberg, 3081.

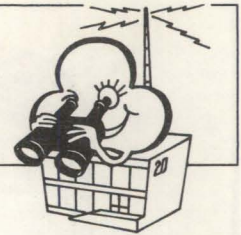
PUBLIC RELATIONS — 1980 CALENDARS

Next year's Guide Calendar is being organised by Australian Headquarters instead of by Victoria as has been done previously and orders are now required. All districts wishing to sell the 1980 Calendars are asked to notify the P.R. Department of the number they require AS SOON AS POSSIBLE, preferably by 30th April. Exact prices are not yet-known but it is expected that, as before, the selling price will be able to be kept to \$1 or less.

BROWNIE GUIDE SECTION — PACK HOLIDAY LICENCE

Since we first published the Pack Holiday Licence some confusion has arisen. We have attempted to clarify this and have prepared an information sheet to help Brownie Guiders who may be contemplating working towards their Pack Holiday Licence. Copies are available from Mrs. Joyce Thompson, Secretary to Advisers, C/o Girl Guide Headquarters.

REPORTING FROM RUSSELL STREET



BROWNIE GUIDE SERVICE REPORT

We regret that, due to circumstances beyond our control, it is not possible for us to establish a special fund to provide Jobst suits for the Royal Children's Hospital. We will be advised by the Hospital of an alternative project that Brownies can work towards and details of this will be in Matilda as soon as available.

COMMISSIONERS' OPEN DAY — 26th JUNE

This year's Open Day for all Commissioners will be held on Tuesday, 26th June, at Guide Headquarters from 10.00 a.m. to 3.00 p.m. Note this day in your diaries now and look for further information about the programme next month.

PERSONAL ACCIDENT INSURANCE — ADULT LEADERS

Districts are reminded that, when Accident Insurance policies are renewed, it is possible to pay extra premiums on behalf of Leaders and thus gain increased benefits. Local Associations should consider doing this to give their Guiders greater protection.

GRANT APPLICATIONS

Members are reminded of two possible sources of funding:

Department of Youth, Sport and Recreation — applications for general grants close mid-May. Contact the Department for application forms which must be lodged at 570 Bourke Street, Melbourne, or through your Regional Officers, by the due date.

Silver Jubilee Trust for Young Australians — applications for financial assistance for special projects can now be lodged through Guide Headquarters for submission to the Trustees. Please contact the State Secretary for further information.

ASIA PACIFIC REGION — LOGO

All member countries of the Asia Pacific Region, the Region to which Australia belongs, have been asked to submit designs for a suitable logo. Have Victorian members any bright ideas? If so, please send your design to the State Secretary by 25th May. Note: The logo must symbolise the Region and be applicable to all member countries within it as well as signify our affiliation with the World Association. It must be suitable for both large and small articles.

ST. GEORGE'S DAY SERVICE — A REMINDER

When? Friday, 20th April, at 7.30 p.m.

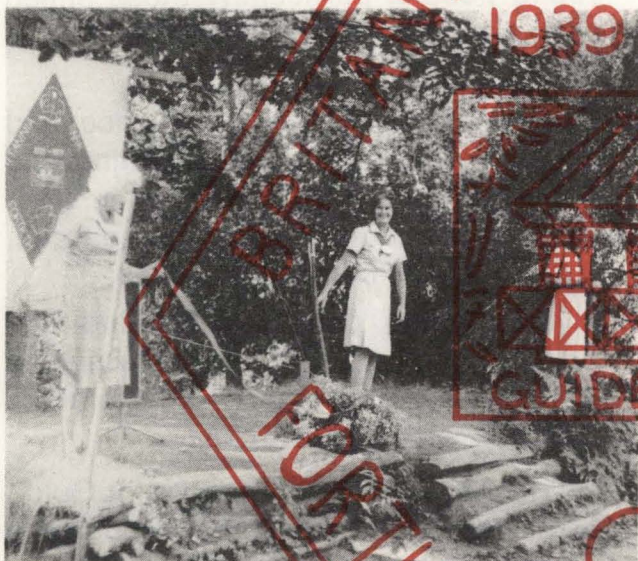
Where? St. Paul's Cathedral, Melbourne.

Who? All members and friends of Guide and Scout Associations.

WANDERING DOWN MEMORY LANE

What fun and fellowship we shared when we travelled back to Britannia Park to celebrate its Ruby (40th) anniversary. There were about seventy-five people living-in at Brownie Cottage, Guide House, Thank-You Chalet and on campsites.

So many things we shall never forget, or probably experience again — the raising of the World Flag by three who attended the first camp — the story of Dolly, the horse and how she was ridden to Britannia Park from Preston — the cowshed, the train rides to Wesburn Station and the hiking or bicycling from there to our campsite — the terrible closeness of the 1939 and 1963 bushfires — the excitement we shared in looking at so many photographs, albums, newspaper cuttings, etc., and meeting people we had not seen for years.



There had been no official opening of Britannia Park because World War II had commenced just then, so our State Commissioner, Mrs Marjorie West, who attended on Visitor's Day, performed a symbolic opening, by cutting the red ribbon held by two of Britannia Park Conveners, Mrs Pat Gray and Mrs Yoland Sargood. We had about eighty visitors on Sunday who had come from far and near and the weather for the weekend was superb.

We shall never forget the serenity of sitting in our open-air chapel for Guides' Own. Mrs Elizabeth Thompson, the guider in charge, shared some thoughts with us of Guides' Owns she had been to over the years and our guest speaker, Mrs Joan Shilton (nee Kilburn), a former Ranger from Caulfield, based her talk on Job, Chapter 28.



You only had to look around you at the rapt expressions, as we all joined in the singing at the Campfire, led by Miss Peg Barr, to realize that this was a highlight of the weekend. On to the stage came at least ten of the original campers, to sing their song "O, Miss Barfus", and the chorus went "Ho, you wretched children, you", and we will always remember the singing of "Peace I ask of thee O River", "No Man is an Island", and so many more.

Miss Dorothea Holtz, an original and current member of the Britannia Park Committee, cut the delicious and beautifully decorated cake, made by patients at Mount Royal and decorated by a Fairfield guider. On the cake was a replica of the cloth badge on a scarf presented to us as we arrived.

The meals, buffet style in B.P. Hut, were appetising and attractively served. What organisation! Congratulations to the Q.M. and her staff.

On the Sunday evening the Committee organised a Mannequin Parade of Guiding costumes dating from 1912. Oh! what laughs we had — models as well as onlookers!

Miss Margaret Mellor showed us interesting films of the first State Camp and the first International Camp held at Britannia Park.

So far, \$184.50 has been donated towards a gift for Britannia Park to commemorate this 40th anniversary.

Thank you, Committee, for enabling so many of us to share in this anniversary; to meet old friends and make new ones. MEMORIES . . . MEMORIES.
—P.L.K.

BRITANNIA PARK

How good to be back with you again after our year overseas. My family agrees that the best part of our travelling was to come again where we really belong. Australia has so much to offer, and we have a great responsibility not to spoil it, in the way many more populated countries have been ruined by carelessness and pollution.

In this 40th anniversary year of Britannia Park we look back with gratitude to all who made it possible for us to enjoy it today, and cared for it so thoughtfully. May we who follow on have the wisdom and energy to make it even more beautiful for future generations.

Special thanks to Mrs Pat Gray, the committee and Mr and Mrs Fraser who kept everything running smoothly in the last year, and to all who supported them and made improvements possible by donations and practical help.

And now to business. The wet summer brought a luxuriant growth of weeds in gardens near Guide House and the Chalet, and blackberries and sword grass flourish in bush areas. Mr Fraser has paint for shabby shower and toilet blocks, so please, have you a free Thursday, even just once or twice this year to help us in these projects or some other small way?

Bring a friend and lunch and enjoy a day of fresh air and exercise with background music of birds. Telephone me at 82 2924 for details and to arrange a day. Then we will see that for Britannia Park — LIFE BEGINS AT 40.

WORKING BEE

On 25th April—from 10.00 a.m. to 4.00 p.m.
Bring your lunch. Tea and coffee supplied.

Thank you to those who helped maintain Britannia Park on these dates in February —

Keilor-Essendon Division (1st, 2nd), Ovens Valley Trefoil Guild (6th, 7th), Footscray Local Association (8th, 9th), 2nd Balwyn Brownie Pack (11th), Thomastown Local Association (13th), 2nd Wheelers Hill Brownie Pack (22nd), Puckapunyal Local Association (22nd, 23rd).

Your money will go to our latest urgent expense — new electricity poles to replace rotted ones between Guide House and the swimming pool.

—YOLAND SARGOOD



GRANTS ARE AVAILABLE

To help young Australians help themselves and others and in particular to

- ★ assist the funding of projects or activities of organisations which benefit young people, particularly those aimed at developing qualities of self reliance, initiative and leadership;
- ★ promote standards of excellence and achievement in education, training and development of young people in their chosen vocation, especially in the trade, technical and community areas;
- ★ involve young people in the life and welfare of the community by assisting them to render service where need, hardship and distress exist.

NOTE: Applications for Grants for Guide purposes are to be submitted through the Association and must reach Headquarters no later than 31st May. For further information contact the State Secretary.



CALLED TO HIGHER SERVICE

Victoria records with regret the death of Lady Chauvel who was Deputy State Commissioner from 1926 to 1931 then State Commissioner from 1931 to 1941. We remember with gratitude the great contribution Lady Chauvel made to the Guide Movement during her active years and offer our sympathy to her family.

COMMISSIONERS' CONFERENCE

ACTIVE IN DOING

We certainly were! Especially on the Saturday afternoon when Marg. McLean of SAC organised most unusual and entertaining activities for us to try. "Monash Manoeuvres" they were called, and the campus was alive with the sounds of hammers beating on copper and giggles from commissioners trying to fly kites and throw boomerangs they had just made. I tried my hand at brass-rubbing and also practised the correct techniques for "mouth to mouth" resuscitation and external cardiac compression on a very lifelike manikin, while some, more energetic than I, ran the orienteering course. We finished the afternoon with New Games and I am sure some commissioners lost a little weight during that last humid, hearty, half hour.

Other sessions at the conference were more serious but all in keeping with the theme "Active in Doing". Guest speaker Denis Oakley inspired many to become active in helping children, and Mrs Shirley Chapman also offered a way to become active in helping others through the Home Tutor Scheme.

Guides' Own on Sunday morning could be considered a serious part of the programme, too, and perhaps it was to some extent when we listened to Marguerite Pritchard speak on her view of the Promise. But to me it was a joyful session too. After our dash through the rain to the Religious Centre our shoes were soggy but our spirits went soaring with the voices of the Strolling Players as they sang "We Belong to Many Nations". Special thanks to the Conference Committee for a thoughtfully planned Guides' Own — the "words and music" linger in my memory.

Another persistent memory is of the superbly funny performance by the Muddlebury Monash Local Association as they planned their "Annual District Meeting". ("Yes, ladies," said Margaret Pennington, "it's the Annual **DISTRICT** Meeting, not the Annual L.A. Meeting.") Members of the committee and some of the Headquarters Advisers played the parts of local association members and district guiders, while Margaret Pennington as District Commissioner struggled valiantly to guide her "ladies" through the planning for, and eventual conducting of, the Annual District Meeting. There were many chuckles as we saw our own experiences portrayed.

Another light-hearted session was the campfire on Saturday night when, among other items, our new State Commissioner and her "swinging, singing team" entertained us, and we saw slides of the exciting activities at Jamborella 1.

Last, but not least, we heard from two ranger guides who had been "active abroad". One told of her travels to Tanzania and the other to Austria, and I marvelled at the poise and aplomb of these two young ambassadors for Australia and the Guide movement.

I found the conference stimulating and entertaining and I feel inspired to initiate more action in my district. If all other commissioners went home with the same feeling, what a dynamic year lies ahead!

—V.J.Q.



INTERNATIONAL YEAR OF THE CHILD

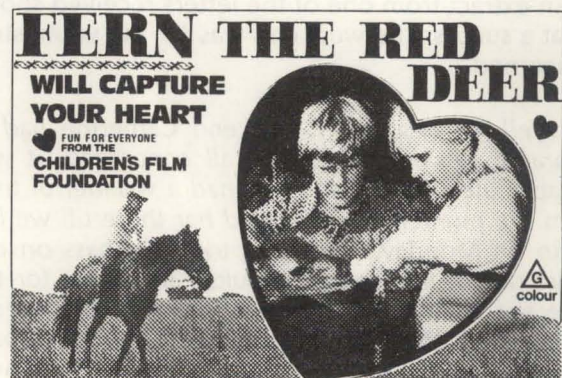
To celebrate the International Year of the Child the Victorian Council for Children's Films and Television has arranged the Children's International Film Carnival.

Metropolitan Brownies will be able to participate in this film carnival by attending the Brownie Movie Morning on Saturday, 28th April, at the Balwyn Theatre.

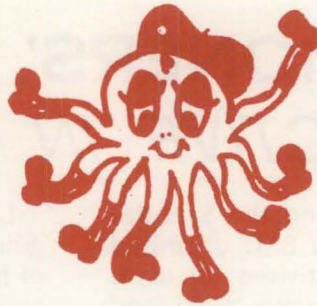
Application details in March Matilda.

A 16 mm print of the film "Fern, the Red Deer" is available to be shown in local halls or theatres in country areas.

Further information is available from Mr Peter Benn, C/- State Film Centre, 1 Macarthur Street, East Melbourne 3002. Telephone 651 1919.



SUPPLEMENTARY



ACTIVITIES

"SAC ON THE BEAT"

"Roller Skating" — For those units who would like to try something different in the Keep Fit area, a new Roller Skating Rink has been opened in Collingwood. The address is Skate City, 200 Johnston Street, Collingwood. Telephone 419 8849 or 419 8749, ask for Mr Ron Sullivan or Mr Steve Duncan. They will give you information concerning facilities, prices, etc.



"ROUND UP 3"

Fifteen youngsters enjoyed a first-class residential weekend for horseriding at Tooradin Estate over the Australia Day weekend.

Experienced riders received first-class tuition and a greater understanding of the sport. The beginners were treated with great care and understanding and given excellent tuition in the basic art of riding and caring for horses.

They were fortunate enough to be able to sleep in the family home and be part of the family life.

An extract from one of the letters received shows what a success the weekend was for the youngsters concerned.

"Well, what a super weekend Catherine had at Tooradin. As far as we are all concerned, it was an absolute success, and she had a wonderful time from the moment we dropped her there till we left again on Monday. Would you please pass on our very grateful thanks to the guider in charge for the time she gave up to supervise the girls that weekend, and to the Q.M. who cooked "terrific food". Actually, what Catherine learnt this weekend was

a whole new sphere, that we would have no hope of teaching her. It was so pleasing to hear her say "there's a lot more to riding than just owning a horse" . . . and other comments like "how one has to look after a horse, after each ride, if you want to ride him again later". It was very clear that the instructors were not only first class, but very interested and concerned about the youngsters: Thanks for an excellent camp — when is the next one? We will certainly be starters for it whenever it is!"

SAC wishes to thank the guider in charge, Mrs Lorna Carthy, the fabulous Q.M., Mrs Joan Foster, Mrs Anne Maclean, First Aider, and Assistant Riding Instructor, and the other staff who helped to run the weekend.

Our very grateful thanks to the Francis family, for so generously sharing their home, and providing a superb horseriding weekend.



"ONLY A BUNCH OF OLD PHOTOS?"

"NO WAY!"

The Girl Guide Association held the Foto Fun Exhibition at Power House on Saturday 10th and Sunday 11th March. What a pity, so many members of the movement did not have the opportunity to see a truly magnificent exhibition.

Those who did come stayed for at least an hour, for there was more to see than "just a bunch of photos"!

The Brownie exhibit was delightful, with handcrafts, international uniforms, pack holiday programmes and photographs of brownies involved in all kinds of activities.

Ranger Section not only provided photographs of many activities, but also a hike tent and light-weight camping gear. Handcrafts and souvenirs from countries visited by rangers also aroused much interest. Camping provided some very interesting camp gadgets. All the photographs from Jamborella were on display.

A very interesting area contained the exhibits from Local Associations, Extensions, Trefoil Guilds, Lones, Matilda, Britannia Park, Iluka, Archives and History of the Movement, not only shown by photographs, but with posters, pamphlets, books and handcrafts.

"SAC" displayed posters and photographs of all activities that have been held, with a great many books on various subjects that people were welcome to read.

IYC was depicted by posters on a "Child's World" and pamphlets from UNICEF.

Public Relations provided all the publicity photographs for both foyers, as well as a display in the great Hall. Our guest exhibitors Marg and Bill Johnson, and George Thomopoulos provided magnificent photographs in two sections — Nature and Children.

The main interest, however, was in the competition photographs, all displayed in a separate section. Pride of place in the exhibition was given to the winning entries, floodlit and centre stage.

Thank you to all who entered the Foto Fun Competition, and congratulations to all who won a prize.

The exhibition was only possible through the cheerful co-operation of so many people. Thanks to the Advisers who contributed material, at very short notice, the displays were great.

Thanks also to the Victorian Association of Photographic Societies for the loan of display boards, and to the judges, Miss Georgie McIlroy, Mr. Norm Watkin and Mr. Ray Stuart.

A special thanks to our guest exhibitors, Marg and Bill Johnson and George Thomopoulos.

Thanks also to Mr Rex Masters of the Scout Association Public Relations Department and Geoff Daniels of the Gang Show for providing flags, stands and display boards.

Grateful thanks and deep appreciation must, however, go to a group of people whose sheer hard work enabled the exhibition to be displayed — and finally dismantled.

To Verna Surry, Pat Cash, Cam and Judy McIntyre, Joan Richardson, Elaine Wallbridge, Ro Lawson, June Owens, Gwen McBain, Jeannie, Kirsty, Austin, Merri, Gill and Leonora.

To Robin Collins, our Public Relations adviser, and her committee.

To the Special Activities Committee, who provided superb food for our official guests, and the general public. A special thanks to Betty Wright and Betty Pearson for taking such good care of all the helpers.

Finally, thanks to the brownies, guides and ranger guides who presented a most entertaining activity at the front entrance, inviting other children to take part and have fun.

These are the people who made the exhibition such a success, an event worthy of inclusion in the official Moomba programme.

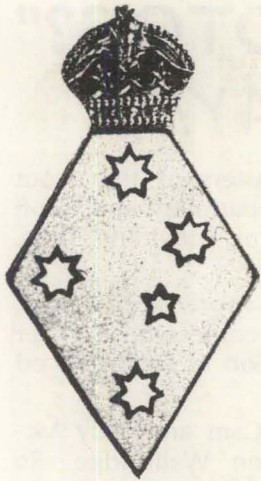
BRAVO TO THEM ALL!

—S.A.O.



Section Champion, Karen Brick, proudly indicates her winning entry and certificate.

SEE LIST OF PRIZE WINNERS IN MAY MATILDA.



HAVE YOU

STATE PRESIDENT
— Lady Winneke



STATE SECRETARY
— Miss Peg Barr



TREASURER
— Mr Ken. Colhoun



BROWNIE ADVISER
— Mrs Janet Cooper



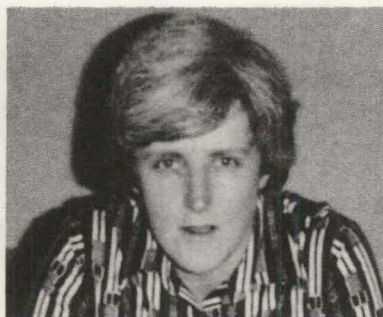
GUIDE ADVISER
— Miss Yvonne James



RANGER ADVISER
— Miss Jean Twist



TRAINING ADVISER
— Miss Enid Bunning



INTERNATIONAL ADVISER
— Miss Wendy Swift

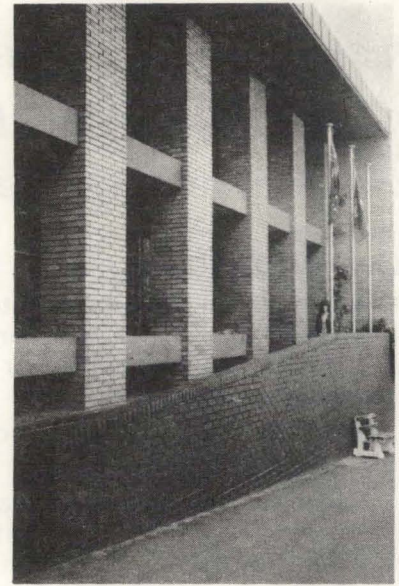


PUBLIC RELATIONS ADVISER
— Mrs Robin Collins

MET...



STATE COMMISSIONER
— Mrs Marjorie West



— Mrs Jill Anjou



ASSISTANT STATE COMMISSIONERS
— Mrs Muriel Pollock



— Mrs Verna Surry



EXTENSION ADVISER
— Mrs Beth Kirkham



LONE ADVISER
— Mrs Robin Sadler



CAMPING ADVISER
— Mrs Jessie Lamond



DEVELOPMENT ADVISER
Dr Kay Patterson



LOCAL ASSOCIATION ADVISER
— Mrs Margaret Pennington



TREFOIL GUILD ADVISER
— Mrs Marie Stubbs

ITEMS OF SPECIAL INTEREST FROM CAMPING DEPARTMENT

CAMP BOOKINGS

Would all campers please note that camp bookings open six months in advance on the 1st of each month by telephoning or writing to Guide Headquarters.

On 1st December bookings open for June and July. No bookings are taken in January.

Bookings open on 1st February for August, 1st March for September, 1st April for October, 1st May for November, 1st June for December, 1st July for January, 1st August for February, 1st September for March, 1st October for April, 1st November for May.

This applies to both Houses and all site bookings for Britannia Park, Janet Whitlam and Shoreham campsites.

However, Guide House and Brownie Cottage will be made available on the first weekend of every month for testing for Indoor Holidays and Pack Holiday Permits/Licences so that one tester may carry out tests in the houses. Bookings for the weekend will be kept open for one month and if there are no tests, allocations will be made according to order of applications received. This scheme will come into operation on 1st November, 1979.

PATANGA CAMPERS

Did you know that the badge on the cord is suitable for your hat or belt? It can be secured with a pin at the back of the lug.



INTERNATIONAL CAMP IN NEW SOUTH WALES

This camp is to be held at Tara campsite, Taylors Road, Silverdale, from 10th to 17th May, 1980. Victoria has been asked to supply —

* 46 leaders — There is a need for leaders holding Camp Licence, Camp Permit, Q.M. certificate and First Aid certificate.

Would interested leaders please apply in writing to the State Camping Adviser by 1st October, 1979, stating qualifications and enclosing 20c stamp. Applicants will be notified after 15th October when final selection has been made. Fee — \$30.00 plus fare.

* 120 guides — Applicants will need either camper badge or to have camped at four guide camps under canvas by the end of February, 1980. Only guides born between 10th December, 1965, and 10th December, 1966, may apply.

Each region is asked to select three representatives and to name at least two reserves who meet these qualifications. Large regions may like to submit two extra names for consideration.

Would Region Commissioners please send selected names to State Camping Adviser by 1st October, 1979. Region Commissioners will be notified after 15th October when final selection has been made. Fee — \$55.00 plus fare.

ILUKA, SHOREHAM

Great news. The indoor accommodation building at Iluka was started on 6th March.

FUN AND FRIENDSHIP DINNER

Wimmera Region held a "Fun and Friendship" Dinner at Warracknabeal and 74 leaders from 19 districts enjoyed meeting friends from the vast Wimmera area.

During the evening reference was made to the International Year of the Child, International Training for Trainers, the visit of Miss Marilyn Lardner of Leitchville to Sangam, camping and training in the region during 1979 and Miss Dorothy Pearse, of Donald, told about her visit to Lord and Lady Baden-Powell's grave in Kenya.

Humorous guiding experiences were related and all agreed that a gathering like this boosts the guiding morale.

—G.F.



TRAINING PAGES

"I SERVE"

This is the Queen's own motto which she has certainly fulfilled with her example of dedication to serving others.

How can we help our girls to serve her?

"Serve the Queen" . . . this phrase is an important section of the Promise we all make . . . but do we really understand what we are promising to do? In a vague way we probably think of saluting the flag and singing the Royal Anthem, or of having a framed photograph of the Queen on the wall of our hall.

But is that all there is? Hardly. In her booklet "Let me tell you a story", Miss Clare Broadhurst explained it thus:—

"You are making a promise which you are going to make a part of your life . . . well then, how can you make this part of the Promise mean something which is real and with you always? We do realize that our Queen is very far away, but she is Queen of our country, Australia. Do you love your country? Do you love your Queen?" "Of course." "Do you think they can mean the same thing? Do you think that by the way I love my country and work for it, I can then be doing my Duty to the Queen?" The answer is "Yes". "How do you love your country? Do you just love it, and say how marvellous it is, and then do nothing about it, or do you love it so much that you are ready to make it something of which you can be very proud?"

Children do want a line on which to work and so we have to go further. And children think their

own particular place is the best place of all. Have you any ideas as to how you can make your own particular place something very good? Knowing the conditions, the questions can be asked — "What are your school playgrounds like? Do you keep them clean? Do you plant trees? What are your school lavatories like? Do you carve your name on desks? Do you carve your name on trees — on seats? Where do you put your litter?" So many questions can be asked, knowing the conditions. "Am I doing the things I should for my Queen and my country?"

Life is more complicated for the older girl who is about to be a Ranger. She is promising to take this Promise out into a "Wider World", and that means the world of her job, new contacts and new experiences. She does need to have a clear conception of "What my Queen means to me in relation to the government of my country." Because she is about to come into contact with different lines of thought, she needs to be sure in her mind of her own feelings, which are based on knowledge and understanding. She needs to know, "what does my Queen stand for?" because certain forces are going to say to her, "Why do we need a Queen; she is only a figurehead!" So in our discussions with this older girl we are trying to fit her to take her place in a wider world, and to see things with her eyes wide open!

Listed here are some games and activities to help you to promote a more personal feeling within the girls towards the Queen and the community:—

The Queen Serving Us

Write out a set of cards, each one bearing a clue, e.g.

- "Do the Queen's feet ever get sore?"
- "Does the Queen's hand ever get tired?"
- "Does the Queen ever suffer headaches?"
- "Does the Queen ever feel tired?"
- "Does the Queen ever get colds?"
- "Is the Queen ever bored?"
- "Does the Queen ever get angry?"

Then present photographs of the Queen in situations which may fit these clues (e.g. wearing a crown, "Does she suffer headaches?"). Or have the girls find their own examples in magazines.

The Guides then match up photographs with clues.

* * *

Anthem Jig-Saw

On a large piece of cardboard, paste or draw a picture of the Australian Flag, on the reverse side of the cardboard, print out the words, in lines, of the National Anthem (Advance, Australia Fair) and

then cut the card into stripes, which are shuffled. The recruit attempts to reassemble the pieces, song-side up.

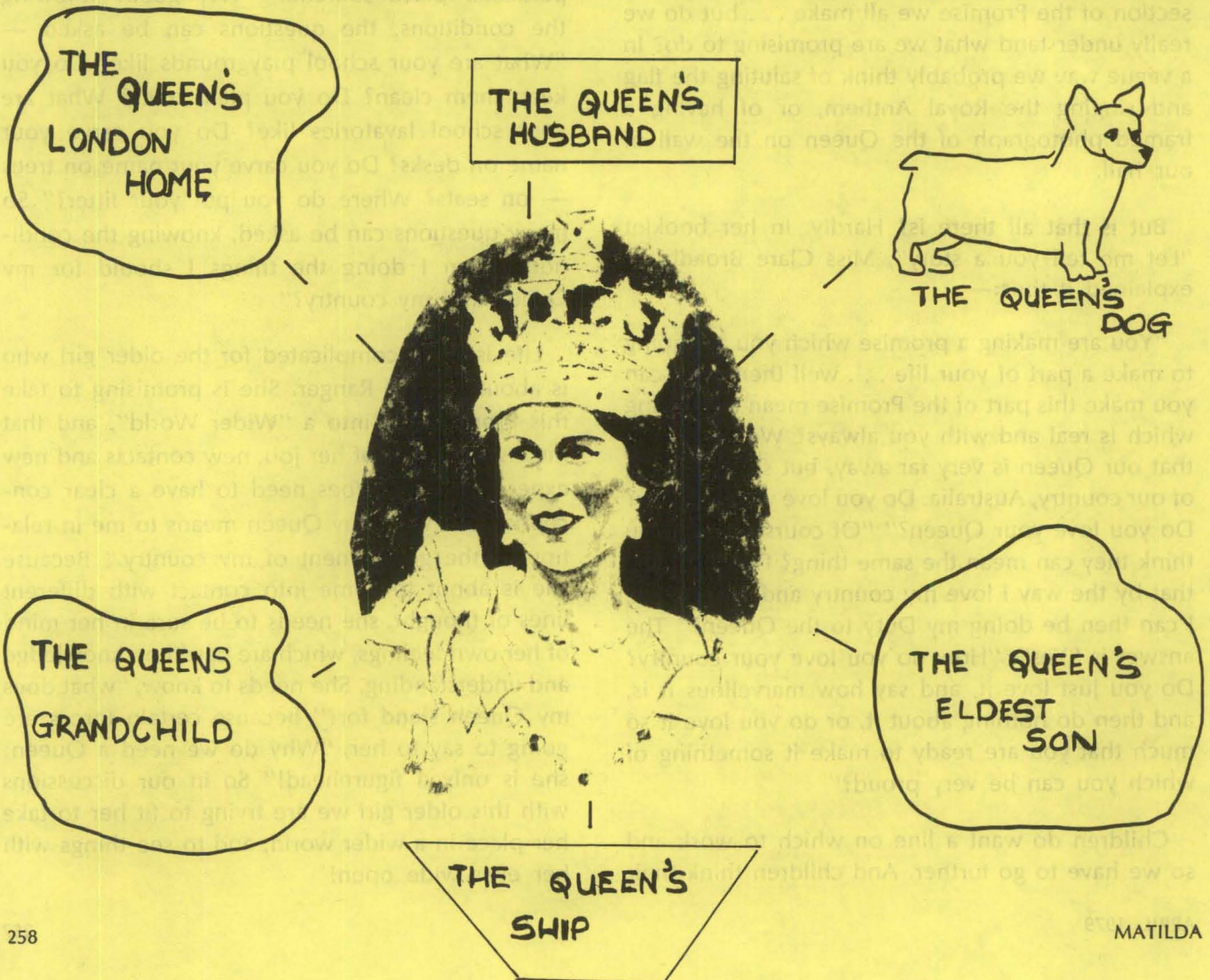
If the pieces are placed into a frame, or on a large piece of stiff plastic, you will readily be able to see if the flag is correct, on the other side, thus checking that she has indeed placed the lines of the song in order. This can also be done with the Royal Anthem ("God Save the Queen") and the Union Flag, or you could use a large map of the pertinent country instead of a flag.

Getting To Know the Queen's Family

On a large piece of cardboard, paste a photograph of the Queen, centrally, with lines radiating out to marked frames, as in diagram below.

The girl (or six) is given appropriate photographs which she must fit into the right frames. This game can be broadened by placing pins through the photographs, the girls then use a magnet attached to a piece of fishing line, to "fish" for the photographs in turn.

This game is for brownies, but can easily be adapted to suit Guide recruits. In fact, it is an excellent project for any girl wanting to give service to her unit . . . (and, therefore, to the Queen).



"How We Serve the Queen"

(For Brownie recruits)

Make a set of small, various-shaped cards (called statement cards) each bearing a way of serving the Queen . . . then, rule several pieces of cardboard into sections . . . then, trace the outlines of the statement-cards onto the board, within the sections, e.g., see illustration below.

For the activity, the girls match the statement shapes with the corresponding outlines on the boards.

Pictures illustrating the statements can also be used, to further discussions about why and how, the various pictures represent service to the Queen.

* * *

Each Six or Patrol is given a category, e.g.

People, Nature (Vegetation), Animals, Buildings, Transport, Education, Health, Families, etc.

They are then given 5, 10 or 15 minutes to work out a playlet describing how they can serve the Queen within their category.

Service

Why not try a special community service as a birthday gift to the Queen . . . to be done on, or for, either her official birthday in June, or her real

birthday in April . . . you could even write and tell Her Majesty about your special gift.

Or, you could have a "Happy Birthday" meeting for either of these dates. Make it a party, and invite some one special to share the party, perhaps some lonely old people, or handicapped children, or Lone Guides.

* * *

Teach your guides basic First Aid, and challenge them to take their knowledge home to teach their families.

Introduce specific keep-fit programmes, again challenging the girls to influence their friends and families to join in.

* * *

For further games and activities, read chapters 3 and 4 of "The Pack and the Promise", which, although for brownies, can all be "matured" and adapted for guides and ranger guides.

See also the booklet "Let me tell you a story" by Clare Broadhurst.

And please do read the relevant chapters of your sections handbooks, both for guiders and the girls.

Always remember, that by following the 8 Point Programme and by keeping our Promise we are really serving the Queen all the time.

The illustration shows a 3x3 grid of shapes for a matching activity. The center cell contains a map of Australia with the text "THE QUEEN IS THE HEAD OF OUR AUSTRALIAN FAMILY". Surrounding the grid are various hand-drawn shapes and text cards:

- Top-left: A triangle with the text "TIDY YOUR PICNIC SPOT".
- Top-middle: An oval.
- Top-right: A house shape.
- Middle-left: A triangle.
- Middle-middle: A map of Australia with the text "THE QUEEN IS THE HEAD OF OUR AUSTRALIAN FAMILY".
- Middle-right: A chevron shape.
- Bottom-left: A rectangle.
- Bottom-middle: A heart.
- Bottom-right: A circle.
- Far right (top): A cloud shape with the text "WATER THE PLANTS IN SUMMER".
- Far right (middle): An oval with the text "OBEY ROAD RULES".
- Far right (bottom): A house shape with the text "HELP SWEEP YOUR HOME".
- Far right (bottom): A chevron shape with the text "DO YOUR BEST WITH ALL YOUR LESSONS".



Over the past six months suggestions of simple First Aid have been printed in these pages. They have been presented in such a way that the information can easily be used by the girls to make a variety of teaching aids for use in units. Treatment for further possible accidents can be found in the Guide Handbook and this can be adapted in the same manner.

BUT First Aid is essentially ACTION, so coupled with games and activities there should also be time to PRACTICE in as realistic a fashion as possible. Some girls are far better than others acting as "patients", so encourage those in control of the practice to choose the "patients" carefully. It is rather unrealistic, and certainly frustrating, to be asked to treat seriously a "patient" with a supposedly sprained ankle when she is bounding round the hall or sitting as a bundle of giggling

glee and being quite unco-operative! Unexpected situations help to encourage the girls to be alert and act quickly. Unknown to the rest of the group arrange to have a "patient" fall to the floor in a faint, rush in with "blood" dripping from her hand or with a badly grazed knee. Experiment with petroleum jelly, "blood" made with glycerine and red colouring, and gravel and soil to make realistic injuries. Bandages and swabs, etc., used for practice must be kept apart from the unit First Aid Kit. Even though only used for practice these bandages should be kept as clean as possible, and laundered regularly — encourage cleanliness at all times even in practice sessions.

DISTRICT DISCUSSION TOPIC

Have all unit leaders in your district up-to-date knowledge of basic First Aid? If not, how could this be remedied? Is formal training required, or could a qualified leader from a nearby district be invited to a district meeting to help you "brush up"? Discuss, and if necessary, put First Aid on 1979's agenda.

HISTORY OF THE VICTORIAN STATE BADGE



The story of Victoria's State badge began in 1925 when, after discussion it was thought a wattle design would be suitable.

Miss Kay Shuttleworth suggested using part of the Victorian crest thus giving the Guides an historic connection with their own State, and in November, 1926, members of the movement were asked, through Matilda, to submit designs for a State badge.

By April, 1927, only two designs had been received — one a Federal star with the State's initial in the centre and the other the Southern Cross on a blue lozenge surmounted by a crown.

The second design was chosen — it had been suggested by Miss M. Moore, for many years a well known guider in Victoria, and the drawing was done by Miss D. Holtz.

The design was finally and formally adopted after it had been shown at the Commissioners' Conference in 1927 and executive minutes of the 24th August, 1927, record this.

The first State badges were on sale in the Guide Shop in August, 1928, and cost 1/6 (guiders) and 6d. (guides).

HISTORY OF LOCAL BADGES

Does your district, division, region have its own special badge?

If you would like to share your badge, its history and meaning with Matilda readers please forward them to the editor at 31 Hampshire Road, Forest Hill, 3131.

LOCAL



ASSOCIATION SECTION

Thought for the Month

Be patient with life and others — and smile.

Be courteous at all times — and smile.

Be considerate of others — and smile.

Be helpful to everyone — and smile.

Show appreciation of the good in others and
THEY WILL SMILE.

(Commissioners' Conference Guides' Own)

LOCAL ASSOCIATION CONFERENCE

"Operation Back-up"

Tuesday, 7th August, 1979

10.00 a.m. - 3.00 p.m.

at

Springvale Town Hall

The conference committee investigated every possible suburban town hall for a conference venue. The need to find seating for about 400, parking for 150 cars, catering facilities and reasonably close public transport whittled away the list.

As we felt it was the turn of Gippsland and eastern and southern suburbs to have easiest access to the conference, Springvale became the only suitable choice. The hall is in Springvale Road, less than half a mile south of the railway station and there is a bus service. We hope those from the other corners of the state will understand our problems and take advantage of the freeways to get across the city to our conference.

A stimulating day is planned. Format has been changed a little: we will have only one main speaker and therefore, more time for questions and discussion. So plan to fill up a car and come for the full day.

Notices will be sent to all local association secretaries in June with details of programme cost, catering and facilities.

Secretaries, is your address registered at headquarters?

"With a ring through the end of her nose!"

Not the Owl and the Pussycat's well-known piggy-wig, but our own well-known Local Association Adviser!

Jane Pennington, our Adviser's daughter, has just returned from a wonderful year as a Rotary scholar in India. Jane is a ranger guide and on Thinking Day, she and her mother visited 6th Kew Brownies and, later, Hawthorn District. Jane spoke about some of the customs she encountered while she lived with her different Indian families and then she played her sitar (a very beautiful stringed instrument) for the girls. Margaret was then model for a how-to-put-it-on-so-it-does-not-fall-off sari demonstration. At the Brownie meeting this included wearing a special nose ring worn by some Indian brides on their wedding day and a 'bindi' (the forehead spot worn by some Indian women). The brownies were also fascinated by all the toe rings Jane wore with her sari. The evening at Hawthorn District concluded with four mothers making the Promise.

RECIPE CORNER:

Eureka Lamb (Nathalia Local Association Recipe Book).

12 lamb chops (forequarter), salt and pepper, 2 tabs. oil, small can of crushed pineapple, $\frac{1}{4}$ cup honey, 1 teasp. salt, $\frac{1}{2}$ teasp. cinnamon, $\frac{1}{4}$ teasp. allspice, 2 medium oranges (peeled and sliced, pith removed).

Season and brown chops in oil. Place in ovenware dish. Mix remaining ingredients and pour over chops. Bake in slow oven 30-35 minutes (or until tender). Serve with rice.

* *

Please send contributions for this section to Mrs W. Pye, 31 Kerferd Street, East Malvern, 3145.

Photography in this issue by courtesy

Headquarters Archives, Sandra Barry,
Heather Cathcart, David Jeffreys and
George Thomopoulos.



RANGERING AROUND

RALLY FOR RANGERS

(18 to 25 years).

WHEN — Sunday, 22nd April, at 1.30 p.m. to 5.00 p.m.

WHERE — Girl Guide Headquarters, 20 Russell Street, Melbourne.

This is your chance to talk about Rangers, the good things and the bad, and to hear other's thoughts and ideas — REVIEW YOUR PROGRAMME. Make sure you have at least one representative present from your unit.

If YOU miss this rally you will be missing an important and vital event. Queries to Chris Wilcock (telephone 819 2761).

RANGER COUNCIL SERVICE PROJECT 1979

RANGERS, come to help with YOUR Service Project on 5th-6th May, at Hamilton — join local Young Farmers, Rotoract, Rovers and unemployed youth to paint and tidy a children's home, and to garden for elderly citizens as well as visiting and talking with these people. Maybe a "disco" on Saturday night. Telephone Annette at 54 3347 or Heather at 90 6871 for details.

"YOUTH BE INVOLVED"

(Ranger Guide — Ranger Conference, 1979.)

DATE — 23rd-24th June.

PLACE — Athenaeum Hall, Doncaster.

This conference is for all ranger guides and rangers — so come and SHARE. Ranger Guide leaders are welcome to come as observers. Conveners — West Doncaster Ranger Guides.

"CHILDREN NO MORE?"

(Ranger Guide Leaders' Conference.)

DATE — 14th July, 1979.

WHERE — Girl Guide Headquarters.

For all Ranger Guide leaders and Ranger counsellors. More information next month.

RANGER SECTION DINNER

DATE — 14th July.

WHERE — THE LONDON HOTEL, Elizabeth St., Melbourne.

TIME — 7.00 p.m. to 9.30 p.m.

Ranger Guide leaders, here is your chance to have a relaxing evening after the conference and enjoy a night out with ranger guides and rangers—

FOUR CORNERS FIXTURE

27th-29th April.

Landlubbers Department — Royston Rubicon Ramble — bus leaves Girl Guide Headquarters at 6.00 p.m. on Friday and returns between 6.00 and 7.00 p.m. Sunday. Enquiries to Mrs S. Hopwood (telephone 523 7248).

Country Cousins Aquatic Carnival — at Geelong — participants will be met at Geelong Station on Friday night and transferred to billets. They will be ready to return at 4.00 p.m. on Sunday. Enquiries to Mrs J. Neumann (telephone 052 43 6545).

Burranna (to fly) — at Berwick — take train to Berwick on Friday evening — accommodation at Mary Blackwood House. Enquiries to Miss K. Pawsey (telephone 707 2539).

BASIC CANOE TRAINING

At Auravale, Wellington Road — part of Cardinia Reservoir, on 21st-22nd April.

This training is for all ranger guides, rangers and Ranger Guide leaders who would like to learn the basics of canoeing. Application forms are in the March Newsletter. Conveners — Sailing School Committee.

"CASTANET CAPERS"

(Ranger Section Debutante Ball.)

At Union Hall, Latrobe University.

On Friday, 20th July.

Ole! Ole! Ole! Calling all señoritas!

Come, clap castanets, flutter your fans and carry a rose in your teeth. Applications for debutantes are being received now — tickets will be available soon. Conveners Plenty Ranger Guides.

Commissioners and Guide Leaders, if you would like to visit any of these activities to find out more about what ranger guides do, please contact the organisers or the Ranger Section Adviser to make arrangements for your visit.



REGATTA 1979

Under threatening skies, over 300 ranger guides, rangers and leaders, gathered at Mornington Masonic Hall one Saturday morning in March to take part in the annual Regatta. With the help of the State Emergency Service, husbands of committee members and rovers, buoys were laid for the races, the first aid tent erected, boats and canoes assembled on Fisherman's Beach, and everything was ready to start.

After lunch Mrs Susan Ahmed welcomed everyone and explained the afternoon's programme, Ranger Section Adviser officially opened the Regatta and races began.

First we had lots of greenies (girls with very little rowing experience) then sproggy and later races for salts (experienced rowers). Much fun ensued as waves became bigger and it was a battle for rowers to keep their course. Onlookers did their utmost to encourage their teams and the sale of

soft drinks and snowballs by enterprising ranger guides and rangers helped keep up everyone's spirits.

At sundown exhausted girls and leaders returned to the hall to change into dry clothes and enjoy a hot meal prepared by Mrs D. O'Shea and her helpers. This was followed by a super campfire led by Mrs M. McLean helped by Miss D. Hargreaves before supper and a few hours sleep.

After very early breakfast we were again on the beach for the rest of the races. The sun shone and the sea was calm so the next 50 races ran smoothly while ranger guides, rangers and leaders also used canoes and had a taste of sailing with Mrs Shirley Hopwood.

By 3.00 p.m. all competitive races were completed, then several hilarious attempts were made by leaders to compete in their own races, and as most had never been in a boat nor handled oars before, the sight created lots of laughter.

Our State Commissioner, Mrs J. West, and her husband joined us for the closing stages of the Regatta and Mrs West presented the cup to Frankston Ranger Guides as winners of the Cox'n Slalom.

The afternoon ended when a clock was presented to the Sailing School by Mr and Mrs Huddle in memory of their daughter Barbara Van Lambaart, a former Ranger Guide leader, and we all joined in a thought provoking Rangers' Own, with the theme, Peace and Understanding, prepared by Mt Waverley 'Kiama' Rangers.

Once again we congratulate the Sailing School Committee on a well organised and exciting Regatta.

THINKING DAY 1979:

About 100 ranger guides, rangers and leaders gathered at Headquarters to celebrate Thinking Day.

They were fascinated to hear from girls who had taken part in overseas events during the past twelve months. Bronwyn spoke about her experiences at a camp in Tanzania and Joanne explained how camping was carried out in Sweden, while Fiona showed us something of her time in Portugal. What we heard and saw made us realize that we do indeed belong to a world wide movement, and how fortunate we are to have ready-made friends in so many countries. We enjoyed barbecue lunch by the Yarra River and our thanks go to Highett (Anzac) Ranger Guide Unit for arranging this event.

WALLA-BOONDI WATER BABIES

Wendy, Michelle, Kim, Liz, Lisa B, Lisa M, Cap and I set out to conquer the rapids of the Yarra. Mr Ellard, a Box Hill group master, brought with him canoes and two venturers and with their coaching we managed to learn a few necessary details which we later learned were more important than we had expected. After three vigorous hours, one slight accident, several 'abandon ships' and a lot of fun we finally reached our destination.

—MANDY MITCHELL.

DEBUTANTE BALL

Come to Maffra Ranger Guide Ball on 27th April.

Tickets at \$5.00 each and information are available from Mrs Marj. Hunt, 13 McAdam Street, Maffra, 3860.



GO GUIDING

MORE ON THE B.P. EMBLEM

Teach a recruit the Promise, Law and Motto and help her to understand them.

The Guide guider is responsible for assessing the candidate's effort for this clause. This does not preclude the guider from assisting the guide to learn how she can teach and use aids so that the recruit does understand these most important parts of her Guiding commitment.

A 10- or 11-year-old learns best from practice and her attention will be better held through games than through talk.

In the Oxford dictionary the word "understand" is described as "perceive the significance", therefore learning the words of the Promise, Laws and Motto is only the beginning. The Australian Guide Handbook, pages 18 to 22, and Chapter V, will help the guide with ideas and background information. Other simple activities like "keep a list of all the good turns you do for a week — which Laws were you keeping?"; play a game pairing the Laws to a set of pictures; help the patrol make up and act a way they can keep the first part of the Promise — are all possibilities for the candidate to incorporate in her teaching.

Gain the Challenge Emblem OR two (2) badges from the Service Emblem.

Gain the Camper badge and one other from the Bushcraft Emblem.

The creation of the Challenge Emblem was an effort to encourage greater use of the Challenge and Junior badges. Guiders realized that "basic" Guiding skills once encouraged through the "Second Class" were being lost, and with the change of age groups, Guides needed to start at a more elementary level than was practical with the majority of interest badges.

The advantage of the Challenge and Junior badges is that girls can be introduced as a group

to a variety of skills from first aid to firelighting. The guider assesses her own guides and adjusts her expectation to each girl's effort and ability.

The addition of the Challenge Emblem as an option in the BP Emblem means a girl can consider herself working toward the BP Emblem from her first day in the unit. This approach should not make girls feel they are required to get the BP Emblem, but it does mean that work for a BP Emblem extends through a girl's total membership in a company and is not done as a "last minute rush" before she is 14½.

For the majority of girls, the use of the Challenge Emblem is of greater benefit than the alternative "two badges from the Service Emblem". This alternative was added for the girl who had a "late start", and for whom the earning of Challenge and Junior badges would present little challenge.

The Camper badge is compulsory because camping is such an important training part of the Guide section programme. It is appreciated that not all guiders hold the necessary camp qualifications to allow them to take their girls camping, but it is emphasised that guiders should explore and encourage every opportunity for their girls to attend Guide camps.

The requirements of the Camper badge are usually beyond the capabilities of most girls under 12½ or 13, but the girl needs to attend as many Guide camps as possible and not leave her rush for experience until she is almost 14.

Perhaps this is the place to make the comment that the only benefit of a BP Emblem is the help it gives in the development of the girl. If a girl says "it was easy" then neither she nor her guider has accepted the challenge to ensure that every badge and every activity is carried through at the highest standard of which that girl is capable.

—YVONNE JAMES,
Guide Adviser.

DOWN IN THE ARCHIVES

As I write I am surrounded by scrapbooks and photograph albums of material relating to Britannia Park; the camps and gatherings that have been held there and more particularly the people whose good service to our Movement is commemorated in the names of the camp sites. While the Archives Committee was preparing a display for the 'Back to Britannia Park' weekend camp, a search through our filing cabinets revealed some fascinating press cuttings and pictures.

How many of you remember the "Walkabout"? It was a large display, held in Melbourne Town Hall, showing the history of Victoria and many of its industries. It was organised to raise money for the endowment of the recently acquired property at Yarra Junction. However, when war was declared three weeks before the Walkabout, the Victorian Executive Committee decided to devote the proceeds partly to Red Cross and partly to the newly opened Guide War Appeal Fund. (There will be something about our War Appeal Fund later.)

And I wonder if any who read this attended one of the Training Schools for officers that took place at Guide House? I found a cutting from *The Sun*, 25th November, 1941, with a report about the "First parade at the new school for officers of the Australian Women's Army Service, held yesterday at Yarra Junction". The picture shows about a dozen women, in a variety of dresses, skirts and blouses, (one might even be wearing Guide uniform) and the caption reads — "Lined up for drill on the picturesque parade ground". The parade ground was the grassy lawn just in front of the house, and



the old 'Cowshed' is seen behind them. It cannot have been easy to do drill on that sloping ground.

Pictures have been found of almost every one for whom a camp site is named, some being taken more than fifty years ago. The changes in uniform are very marked. We cannot reproduce the oldest one, of Lady Stradbroke, our first State Commissioner, taken in 1926, though we can show you the Stradbroke Cup which she presented to the Guides of Victoria at the end of her term of office, and which was competed for biennially until 1938.

So much of our Guide history comes to mind when looking at these photographs and cuttings. There is one of Miss Alison Campbell, who started the Extension Section in Victoria. On the back is written — A. Campbell and Lady Huntingfield, Bush Fire camp. Lady Huntingfield was our State President then, and I can well remember how a day or two after her visit to the Extension Camp in 1939 we were all evacuated at a few hours' notice. At least two other present day guiders were camping on the property — Mrs Joan Moors and Miss Margaret Mellor, and the three of us were also evacuated from the Interstate Extension camp during the bushfires of 1962.

Our display showed the badges and identity bracelet, from the Guide International Service, belonging to Miss Frieda Barfus. They are included because not only did 'Barf' serve in the G.I.S. in Germany and in the London office, but several of the test camps for selecting volunteers took place at Britannia Park.

A group photograph taken of the staff at a Guiders Training Week — I think in the early 1930's — shows six of the people for whom camp sites are named.

There is Miss Merle Bush, one of the first two Victorians to gain the Training Diploma, and Miss Margaret Moore, 1st Aider at dozens of camps and Training Weeks, and captain of Canterbury Rangers. Next to her is Miss Mollie Hoffmeyer, a guider in Bendigo in the early days. Then there is 'Barf' and beside her sits Miss Dell Hayman, Trainer, State Secretary, Guide Captain in Sandringham, and particularly remembered for leading the Australian G.I.S. team in Malaya. Miss Edith Purnell is next, we have her Guide belt in the archives and I have never seen such a beautifully polished, supple piece of leather, even after these many years.

These books of press cuttings which go back to 1929 are absolutely fascinating and it needs great self control for me not to stop and read them all right now. They will provide material for many future articles and I hope to reproduce some of the pictures in Matilda and to put some of this display in Headquarters.

MARY LAMBE, State Archivist.

TREFOIL TALES

Eastern Suburbs had distinguished guests at their Thinking Day meeting. Their guest speaker was Carine, Lady Baden-Powell who told of the work done by her guild. Another guest, Mrs Marjorie West, State Commissioner, unveiled a pennant sent to Eastern Suburbs by a Yorkshire guild. Mrs Lithgow, Region Commissioner for East Metropolitan Area, was also present, and representatives from nearby Trefoils.

Members from **Cooper, Ashglen and Tallaringa** Trefoils visited Channel 0 for the "Peter Couchman Show". A chicken and champagne luncheon preceded the taping of the first show for the year. Proceeds from the morning went to Baden-Powell Memorial Homes Project.

On behalf of all Victorian guilds, Thinking Day greetings were sent to the other States and today greetings came back from South Australia and New South Wales.

I have just returned from Jumbunna Lodge, Launching Place, the venue for the combined Baden-Powell-Trefoil Guilds weekend seminar. This year the theme was "Nothing is Impossible". The weekend was opened by Mrs Joan Grimwade who spoke about challenges. The Guilds' Own was at Britannia Park and our speaker was Mr C. R. Nichols. We were delighted to have Mrs Esmá Gordon from Auckland Trefoil with us. She and her husband Ken have been travelling round Australia in a camper-van and attending Trefoil functions whenever possible.

M.S.

JUMBLE SALE

Town and Country Trefoil Guild will hold a Jumble Sale on 24th May to aid guiding funds.

The guild appeals for donations of goods to stock the stalls.

If you can help please contact any of the following — Mrs J. Alexander, Malvern (509 1494), Mrs M. Pritchard, Brighton (92 3708), Mrs D. Fox, Blackburn (877 2975), Mrs B. Chamberlain, Montmorency (435 1657), Mrs B. Davies, Mt. Waverley (277 1829), Mrs D. Renard, Balwyn (857 9447).

EXTENSION EXTRACTS

6th Brighton (Extension) Guides meet every second Saturday at "Monkani" Guide Hall. (When they are not OUT doing things.) 1st Gardenvale-Brighton Company and 1st Brighton Brownie Pack also meet there, so this year they all decided on a united effort for Thinking Day.

On the first meeting day after the holidays an enormous cake was made by the extension girls, using a television box. Many basinsful of playdough were measured, mixed, coloured bright yellow and cooked in an electric fry-pan. The dough was spread all over the box. Round the edge went a wide pleated guide blue frill and the "cake" was put on a card table.

At their meeting the Gardenvale-Brighton guides made a big, blue badge and put it in the middle of the confection.

The local brownies and guides gathered at the hall on Wednesday evening. Only a few 6th Brighton guides attended because, being physically handicapped and living in widely scattered suburbs they find meetings at night difficult.

When the horseshoe was formed round the very large "cake" everyone pinned flags representing Guiding or Scouting countries, round the edge — thus completing the decoration. The flags had been prepared by the brownies as their contribution. Games and fish and chips completed a happy evening.

The cake was preserved in all its glory, and on the following Saturday afternoon, Charlotte and Katie helped organise it all again for the rest of the extension girls. When the ceremony was over there were games and afternoon tea and an uproarious sing-song led by Jayne.

N.O.D.

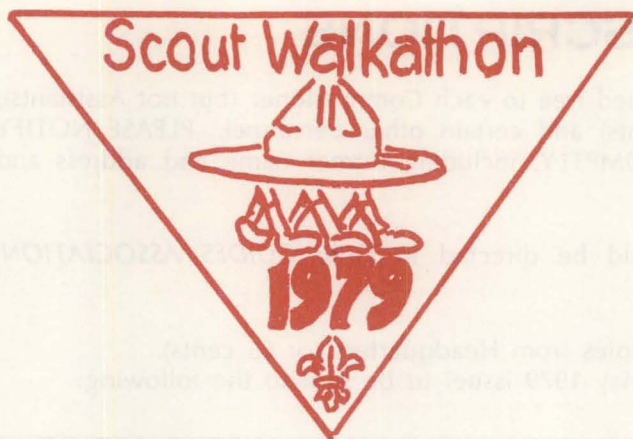
AUSTRALIAN LITERARY AWARD

Encourage your brownies or guides to write a poem, story or play of a guiding event they have enjoyed.

Send it along for the Literary Award (refer to page 127 of November 1978 issue of Matilda). Maybe the guides have a truly Australian Camp recipe — or game — or cartoon sketch — or humorous anecdote.

We need them to produce a book to show Australia and the world just what Australian guides and brownies do.

Remember the closing date is 31st May, 1979.



To be held on Sunday, 6th May.

April Action has been extended by one week.

Are your girls ready to walk?

Guiders and commissioners please contact local Scout people for maps, cards, check point locations, etc. These should be available within three weeks. If you have any difficulties contact Jill Anjou (857 7752) or Guide Headquarters.

We suggest commissioners encourage parents and local association members to be at all check points so if any girl cannot complete the course she will be looked after.

Girls are asked to walk in correct camp uniform. The badge (cost 8 cents) will be available at final check point.

—JILL ANJOU.



INTERNATIONAL TRAINING FOR TRAINERS

Congratulations and thanks to all members in Victoria who helped raise \$2500 for the International Training for Trainers. As a result of their generous efforts, Victoria has been able to fully sponsor two trainers from India to come to the International Training for Trainers, which is to be held in Melbourne in May.

The advertisement for Qantas which you will see in this issue of Matilda is printed in recognition of the financial assistance given by this airline which has contributed fares for trainers from Thailand and Nepal.

CRYSTAL PALACE

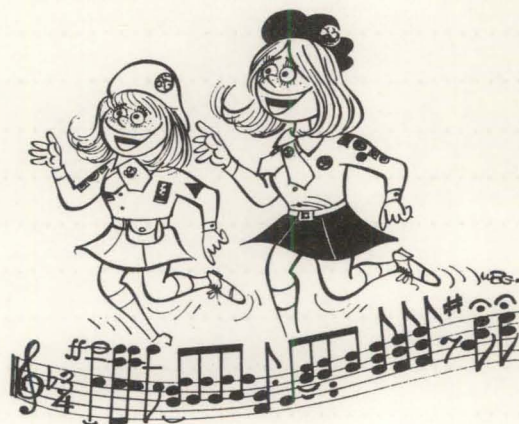
Dear Matilda —

As the Crystal Palace has such an historical interest for Girl Guides and Scouts, I was interested in the following note from London Transport — (and how to get there!) —

"Built in 1851 in Hyde Park, London, by Joseph Paxton — a masterpiece of cast-iron and glass. The Great Exhibition was held there in 1854. It was later moved and re-erected at Sydenham Hill, where it was destroyed by fire in 1936. Nothing remains of the Crystal Palace, but there are some relics of the 1854 Exhibition in the statues and stones of pre-historic monsters in the park at the top of Sydenham Hill — where the Palace once stood."

—GLADYS WATSON.

APRIL ACTION



Last year 3rd Templestowe Brownies made and sold 400 dozen lamingtons for April Action and 1st Highton Guides held an international feast. 1st Wodonga Guides invited the Brownies to join them in a baked-bean-athon (a sponsored contest to see how many beans could be eaten, using a toothpick, in five minutes). Altogether these three units earned over \$300.

What are your plans for April Action this year?

MARYBOROUGH CELEBRATIONS

Maryborough District plans to celebrate 50 years of Guiding in September 1980.

We would be pleased to receive information and photographs of early Guiding in Maryborough. If you can help please contact Mrs G. Hartley, 180 Park Road, Maryborough, 3465.

TRAINING CALENDAR

Commissioners and unit leaders with the necessary experience are welcome to apply for **ANY** training. Applications should be sent **prior to the closing date and be accompanied by the training fee and a stamped self addressed envelope.** Training fee is \$3.00 unless otherwise stated. **Please note acceptance cards are not sent out until the closing date.**

Stage 1 Training

Boort: Weekends 14th-15th July and 18th-19th August, times 10.00 a.m. to 4.00 p.m. Applications to Mrs B. Whelan, 8 Hope Street, Kangaroo Flat, 3555, by **25th June.**

Colac: Weekends 23rd-24th June and 21st-22nd July, times 10.00 a.m. to 4.00 p.m. Applications to Mrs B. Swinton, 260 Merri Crescent, Warrnambool, 3280, by **1st June.**

Deer Park: Weekends 7th-8th and 28th-29th July, times 10.00 a.m. to 4.00 p.m. Applications to Mrs R. Bell, 10 Debenham Drive, St. Albans, 3021, by **11th June.**

Doveton: Weekends 14th-15th July and 11th-12th August, times 10.00 a.m. to 4.00 p.m. Applications to Mrs K. Wilkie, 8 Olive Street, Dandenong, 3175, by **25th June.**

Headquarters: Weekend 2nd-3rd June and 7th-8th July, times 10.00 a.m. to 4.00 p.m. Note: Ranger Guide training available. Applications to Training Department, Guide Headquarters, by **10th May.**

Headquarters: Thursday, 14th, 21st, 28th June, 5th, 12th July, times 10.00 a.m. to 3.00 p.m. Applications to Training Department, Guide Headquarters, by **23rd May.**

Mildura South: Weekend 23rd-24th June and **Cardross** 14th-15th July, times 9.40 a.m. to 4.00 p.m. Applications to Mrs S. Smith, 10 Barry Avenue, Mildura, 3500, by **1st June.**

Mooroopna: Weekends 21st-22nd July and 18th-19th August, times 10.00 a.m. to 4.00 p.m. Applications to Mrs J. Murphy, 73 Balaclava Road, Shepparton, 3630, by **29th June.**

Warracknabeal: Weekends 2nd-3rd June and 30th June-1st July, times 10.00 a.m. to 4.00 p.m. Applications to Mrs J. Creek, R.M.B. 358, Nhill, 3418, by **12th May.**

Wattle Park: Weekend 30th June-1st July and Saturday, 21st July and weekend 4th-5th August, times 10.00 a.m. to 4.00 p.m. Applications to Mrs F. Ludbrook, 5 Curnola Avenue, Doncaster, 3108, by **4th June.**

Woorayl Region: Weekends 30th June-1st July and 28th-29th July. Further information available from Mrs S. Holland, Kardella South, 3951.

Stage 2 Programming and Activities for Warranted Leaders

Glenroy: 7th-8th and 28th-29th July, times 10.00 a.m. to 4.00 p.m. Applications to Miss M. Mcleod, 3 Glenview Road, Strathmore, 3041, by **20th June.**

Merbein: Weekends 7th-8th July and 4th-5th August, times 10.00 a.m. to 4.00 p.m. Applications to Mrs S. Smith, 10 Barry Avenue, Mildura, 3500, by **20th June.**

Moorleigh: Weekends 14th-15th July and 11th-12th August, times 10.00 a.m. to 4.00 p.m. Applications to Mrs P. H. G. Jones, 14 Walker Grove, Cheltenham, 3192, by **25th June.**

Upwey: Weekends 23rd-24th June and 28th-29th July, times 10.00 a.m. to 4.00 p.m. Applications to Mrs J. Huxtable, 93 Orange Grove, Bayswater, 3153, by **1st June.**

Warracknabeal: Weekends 5th-6th May and 2nd-3rd June, times 10.00 a.m. to 4.00 p.m. Note: Ranger Guide Training available. **Apply immediately** to Miss H. Smith, 21 Cusack Street, Wangaratta, 3677.

Accent on Leadership — Special Subjects for guiders who have completed Stage 2 Training

Warragul: Weekends 2nd-3rd June and 30th June-1st July, times 10.00 a.m. to 4.00 p.m. Applications to Mrs K. Marshall, 29 Hearn Street, Drouin, 3818, by **18th May.**

Barwon Region: Thursday, 19th, 26th July, 2nd, 9th, 16th August, times 10.00 a.m. to 3.00 p.m. Applications to Mrs W. Podbury, 24 Lupton Street, Geelong West, 3226, by **29th June.**

Campcraft Training

Glenroy: Monday, 28th May and 4th June, times 7.30 p.m. to 10.00 p.m. plus Saturday, 7th July at **Janet Whitlam** times to be advised plus 21st-22nd July at **Rowallen** and 11th-12th August at **Britannia Park** times 9.00 a.m. Saturday to 4.00 p.m. Sunday. Note: Cost of weekends to be advised. Applications and \$6.00 to Miss M. Mcleod, 3 Glenview Road, Strathmore, 3041, by **7th May.**

'Yandiah': Weekends 2nd-3rd June, times 9.00 a.m. to 9.00 p.m. Saturday and 9.00 a.m. to 4.00 p.m. Sunday and weekends 30th June-1st July, 21st-22nd July and 11th-12th August, times 9.00 a.m. Saturday to 4.00 p.m. Sunday. Note: cost of weekends to be advised. Applications and \$6.00 to Mrs S. Smith, 10 Barry Avenue, Mildura, 3500, by **12th May.**

Pack Holiday Training

Britannia Park: 6th-7th-8th July, times and cost to be advised. Applications to Mrs P. H. G. Jones, 14 Walker Grove, Cheltenham, 3192, by **8th June.**

Camp First Aid Training

Headquarters: Weekend 23rd-24th June, times 9.00 a.m. to 4.00 p.m. Applications and \$2.00 to Training Department, Guide Headquarters, by **4th June.**

Q.M. Course (open to all sections)

Castlemaine: Weekend 5th-6th May, times 10.00 a.m. Saturday to 4.00 p.m. Sunday **OR** 10.00 a.m. to 9.00 p.m. Saturday and 7.00 a.m. to 4.00 p.m. Sunday Note: Overnight accommodation available in hall Applications and \$9.50 to Training Department, Guide Headquarters, by **26th April.**

Sherbrooke River: Weekend 28th-29th July, times 10.00 a.m. Saturday to 4.00 p.m. Sunday. Applications and \$10.50 to Mrs J. Swinton, 260 Merri Crescent, Warrnambool, 3280, by **5th July.**

TRAINING CALENDAR (continued)

Facts 'n Fun for Local Association Members

Lake Bolac: Wednesday, 9th May, times 10.00 a.m. to 3.00 p.m. Applications and 50 cents per local association member to Mrs G. Swainston, 13 Wright Street, Skipton, 3361, by **20th April**.

Kerang: Thursday, 7th June, times 10.00 a.m. to 3.00 p.m. Applications and 50 cents per local association member to Mrs B. Whelan, 8 Hope Street, Kangaroo Flat, 3555, by **25th May**.

Rushworth: Thursday, 21st June, times 10.00 a.m. to 3.00 p.m. Applications and 50 cents per local association member to Mrs J. Murphy, 73 Balaclava Road, Shepparton, 3630, by **30th May**.

Wodonga: Thursday, 12th July, times 10.00 a.m. to 3.00 p.m. Applications and 50 cents per local association member to Miss H. Smith, 21 Cusack Street, Wangaratta, 3677, by **24th June**.

Special Subjects for Brownie Guiders

Headquarters: Thursday, 10th May, times 10.30 a.m. to 3.30 p.m. Note: To include Programming, Skills and Creativity and **YOUR** requests. Applications and \$1.20 to Training Department, Guide Headquarters, by **24th April**.

World Friendship

Box Hill North: Saturday, 5th May, times 10.30 a.m. to 3.30 p.m. Applications and \$1.50 to Mrs F. Ludbrook, 5 Cur-nola Avenue, Doncaster, 3108, by **18th April**.

Sea Shore Surprises

City Beaches: Thursday, 19th July, times 9.30 a.m. to 3.00 p.m. Applications and \$1.20 to Training Department, Guide Headquarters, by **1st July**.

* * *

BRASS RUBBING

Hold a brass rubbing night at your meeting.

A demonstrator is available for any afternoon or evening.

Write or telephone for samples and price list.

Country leaders — miniature brasses, materials and full instructions can be rail freighted to your area.

MARGARET ANGUS, 16 Ingrid Street, Scoresby, 3179. Telephone 763 6811.

* * *

B.P. EMBLEM CEREMONY

Simpson guides Suzanne Stenchcombe and Janice Winkler received their B.P. Emblems at a campfire ceremony.

Guides and brownies, cubs and scouts, parents and friends enjoyed the happy evening.

CONGRATULATIONS to the recipients of the following:

Guider Long Service

(20 years) Mrs H. E. Clarke, Bright.

(10 years) Mrs K. Tanian, Jeeralang Junction; Mrs S. A. Hopwood, Caulfield; Mrs C. Wood, Dallas; Mrs L. Earl, Warragul; Mrs M. Turner, Ringwood; Mrs D. Snowdon, Colac; Mrs B. Widdis, Bairnsdale; Mrs I. Mead, Nunawading; Mrs C. Clark, Forest Hill; Mrs P. Thiele, Glen Waverley; Mrs M. Kennewell, Sorrento; Mrs B. Frey, South Oakleigh; Mrs. E. Neales, East Kew; Mrs B. Davies, Wantirna.

Combined Long Service

(20 years) Miss P. D. Askew, Caulfield.

(10 years) Mrs B. Bowman, Ballarat.

Local Association Long Service

(10 years) Mrs S. Saunders, Rosedale; Mrs R. Pollock, Boort; Mrs J. Whittington, East Bentleigh.

APPOINTMENTS AND WARRANTS

A warm welcome is extended to the following:

Division Commissioner

Mrs R. R. Cooper, Bendigo Southern.

District Commissioners

Mrs J. F. Shady, Casterton; Mrs R. A. Davidson, Allansford; Mrs B. C. Thomas, Mitcham; Mrs A. W. Brown, Doncaster West; Mrs J. F. Wilding, North Balwyn-Greythorn; Mrs I. A. Fraser, Kerrimuir; Mrs E. W. Dettman, Myrtleford and Whorouly South; Mrs J. R. Burhop, Koo-wee-rup; Mrs D. J. Webb, Trafalgar; Mrs L. J. Arnott, Robinvale; Mrs J. F. Hirst, Bairnsdale; Mrs W. L. Daniel, Lakes Entrance; Mrs R. F. McCluskey, Traralgon.

Ranger Guiders

Miss J. F. Gibbs, Moorabbin South Rangers; Mrs S. Bunker, Cobram Rangers; Mrs M. E. McDougall, Otway Region Rangers; Mrs C. A. Van Rhine, Hazelwood-Churchill Rangers.

Assistant Ranger Guider

Mrs J. F. Woods, Otway Region Rangers.

Guide Guiders

Miss C. A. Powell, 3rd Moorabbin South; Miss L. Wallis, 7th Geelong; Mrs G. J. Unwin, 3rd East Doncaster; Mrs M. White, 2nd Overport; Miss L. Jarvis, 3rd Overport; Miss G. A. Linke, 2nd Williamstown; Miss J. Mills, 2nd Essendon; Mrs L. J. Stanway, 1st Doveton; Mrs H. Mocnik, 2nd Moe; Mrs I. Herbert, 1st Keilor; Mrs D. G. Wilson, 4th Ballarat; Miss B. Stotten, 2nd Aberfeldie; Mrs C. A. Fulford, 1st Elliminyt; Mrs A. Weston, 1st Research; Miss J. Croft, 10th Ballarat; Mrs D. Gorman, 1st Yea.

Except for articles where copyright restrictions are indicated, material in "Matilda" may be reprinted in Guide and Scout magazines without prior permission. A credit line would, however, be appreciated.

Assistant Guide Guiders

Mrs T. Sutherland, 2nd Greensborough; Miss M. Lepas, 7th Geelong; Miss S. A. Birkett, 3rd East Doncaster; Mrs J. A. Gibson, 1st Cressy; Miss J. Smit, 1st Geelong West; Miss V. Ison, 1st Ringwood; Mrs J. Pakeman, 1st Doveton; Miss J. Young, 3rd Williamstown; Miss J. Townsend, 1st Newport; Mrs R. A. Rowley, 1st Yea.

Brownie Guiders

Mrs E. Richards, 3rd Moorabbin South; Mrs W. A. Sherriff, 1st Devon Meadows; Mrs F. D. Sullivan, 2nd Puckapunyal; Mrs J. T. Fuzzard, 1st Strathmerton; Mrs D. Finn, 2nd Aberfeldie; Miss B. Belcher, 3rd Moe; Mrs L. Roy, 3rd Altona North.

Assistant Brownie Guiders

Mrs D. L. Green, 2nd Neerim; Mrs E. Butfield, 2nd Hallam; Mrs M. Pollitt, 1st Inglewood; Mrs W. N. Smith, 2nd Mortlake; Mrs E. J. Atwell, 1st Puckapunyal; Mrs H. J. Young, 1st Sunbury; Miss B. R. Weekly, 1st Upfield; Mrs A. Frost, 1st Keilor; Miss J. Reid, 2nd Altona North; Mrs M. Griggs, 3rd Altona North; Mrs J. Belmont, 1st Watsonia; Mrs M. Wheatley, 1st Watsonia; Mrs G. Swannie, 2nd Greensborough.

REGISTRATIONS

Maryborough Ranger Guide Unit; 2nd Cranbourne Company; Harrow Local Association.

RESIGNATIONS AND RETIREMENTS

We acknowledge with gratitude the services given by the following, whose Warrants have been returned:

Division Commissioners

Mrs R. G. Baker, Bendigo Southern; Mrs C. S. Pictor, Macedon.

District Commissioners

Mrs K. B. Higgins, Hampton; Mrs G. E. Spehr, Allansford; Mrs B. V. Rainsford, Cann Valley; Mrs H. W. Branson, Colbinabbin; Mrs D. J. McGuigan, Wantirna South; Mrs M. Wallbridge, Parkmore; Mrs E. B. Marvin, Mitcham; Mrs C. C. Warren, Tyabb; Mrs C. H. Collison, Dromana; Mrs R. B. Wright, Shepparton; Mrs S. Ely, Shepparton South; Mrs W. J. Voss, Puckapunyal; Mrs K. H. Mills (Acting), Koo-wee-rup.

Ranger Guiders

Miss J. D. Draffen, Mortlake Rangers; Mrs T. L. Holmes, Carrum-Bonbeach Rangers; Mrs I. F. Boyd, Central Doncaster Rangers; Mrs R. E. Thomas, Benteigh Rangers; Mrs K. Rosen, Burwood Rangers.

Assistant Ranger Guider

Miss B. Wilkinson, Wycheproof Rangers.

Guide Guiders

Mrs L. Freshwater, 1st Rosedale; Mrs F. Davenport, 1st Swan Hill; Mrs B. Watts, 1st Robinvale; Mrs K. Buddle, 1st Pin Forest; Mrs K. P. Graham, 1st Yinnar; Mrs M. Kennewell, 2nd Sorrento; Miss C. Lovelock, 1st St. Albans; Mrs M. Leah, 1st Beaufort; Mrs R. McNab, 2nd Aberfeldie; Mrs N. Duggan, 2nd Geelong West; Mrs R. Moser, 1st Rosebud; Mrs R. G. Baillie, 1st Dingley.

Assistant Guide Guiders

Miss J. Mills, 2nd Essendon; Miss D. Walsh, 3rd Doncaster; Mrs N. Fisk, 1st Apollo Bay; Miss N. A. Dewhurst, 1st Bendigo South.

Brownie Guiders

Mrs V. Nancarrow, 1st Cowes; Mrs H. Baker, 1st Strathmerton; Mrs M. Deller, 3rd Laverton; Mrs J. H. Noade, 1st Laverton; Mrs G. Ball, 1st Carrum; Mrs E. Lewis, 3rd Stawell; Mrs K. Walsh, 1st Robinvale; Mrs A. J. Baldock, 2nd Dareton; Mrs E. J. Needs, 2nd Karingal; Mrs M. Booth, 1st Devon Meadows; Mrs L. Hartley, 1st Central Doncaster; Mrs K. M. Baker, 1st Keilor; Mrs A. S. Waight, 1st Keilor; Mrs G. Bisinella, 3rd Belmont; Mrs H. Carter, 1st Albert Park; Mrs M. Sparkes, 2nd Rosebud; Mrs C. Whyte, 1st Apollo Bay; Mrs M. Daniels, 2nd Kyabram.

Assistant Brownie Guiders

Mrs V. J. Hore, 3rd Warragul; Miss C. Lowry, 3rd Laverton; Mrs H. Mocnik, 2nd Moe; Miss R. Blandford, 1st Moe; Mrs G. Costello, 1st Central Doncaster; Mrs J. R. Patterson, 1st Keilor Park; Mrs N. A. Newbiggin, 3rd Donvale; Miss B. Cornell, 4th Mildura; Mrs J. T. Fuzzard, 1st Strathmerton; Mrs H. R. Earl, 1st Warragul; Mrs J. Troup, 1st Beaufort; Mrs J. Williams, 3rd Hampton Park; Mrs A. Wakefield, 1st Wedderburn; Mrs K. J. Wood, 1st Cowes; Miss B. Belcher, 3rd Moe.

DO YOU NEED MORE FUNDS?

HOME STYLE LAMINGTONS

MAKE MONEY

THEY ARE

- Packed ready for sale.
- Jam filled.
- Delivered free.
- Delicious to eat.
- Easy to sell.
- MONEY MAKERS.



FOR FUNDRAISING DETAILS
CONTACT SALES OFFICE

THE PHOENIX BISCUIT CO.
Grosvenor St. Abbotsford Vic.
Phone (03) 422 166

Stretch your wings Australia.



QANTAS



QF0242