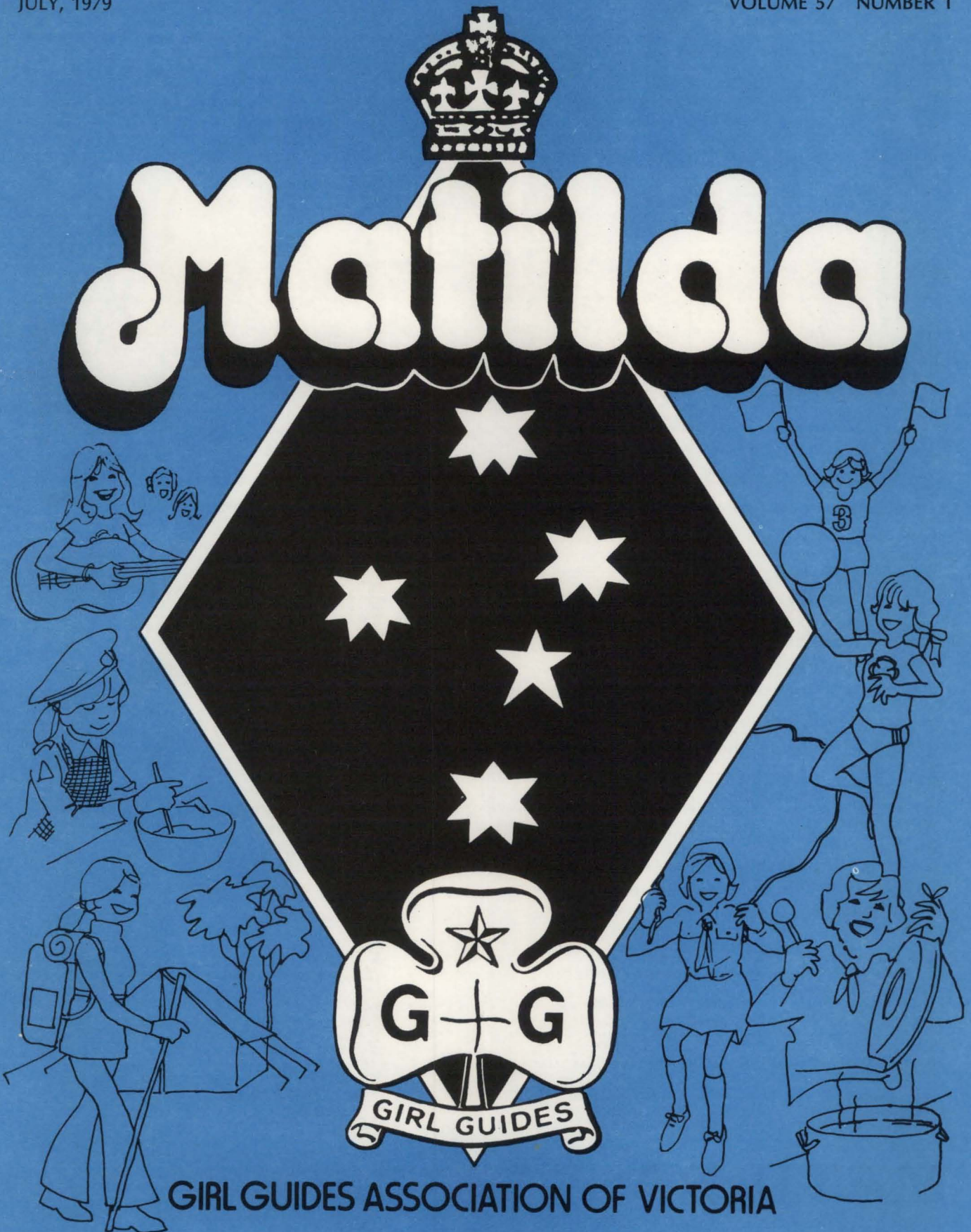


# Matilda



GIRL GUIDES ASSOCIATION OF VICTORIA



State Commissioner, Mrs West, is seen here with the delegates from India to the International Training for Trainers — Reports and photographs on pages 5, 6 and 7.

In this issue . . .	Page
Archives . . . . .	24
Australian Post Box . . . . .	12
Brownies . . . . .	18
Guides . . . . .	19
Guide Shop . . . . .	28
Iluka Invitation . . . . .	12
I.T.T. . . . .	5
Local Association Section . . . . .	17
Notices . . . . .	8, 9, 10, 11, 23, 27
Personnel Canges, etc. . . . .	26
Rangers . . . . .	21
Reporting from Russell Street . . . . .	4
State Commissioner's Letter . . . . .	3
Supplementary Activities . . . . .	11
Training Calendar . . . . .	25
Training Pages . . . . .	13-16
Trefoil Notes . . . . .	10

# MATILDA

PUBLISHED BY THE GIRL GUIDES ASSOCIATION OF VICTORIA,  
20 RUSSELL STREET, MELBOURNE, VICTORIA, AUSTRALIA, 3000. TELEPHONE: 63 7911

State Commissioner: MRS. J. N. WEST

State Secretary: MISS M. W. BARR

Assistant State Commissioners: MRS. C. S. ANJOU, MRS. W. J. B. POLLOCK, MRS. S. J. SURRY

Editor: MRS. L. I. RICHARDSON, 31 Hampshire Road, Forest Hill, 3131



## From our State Commissioner

Hello Everyone,

Firstly, there was a mistake in my letter in the May issue of Matilda concerning the m.v. "Commissioner", from which I viewed the yacht race. This vessel is operated by Port of Melbourne Authority, and under no circumstances may it be hired or used in fund raising. Would you please note this, and I sincerely apologize for my mistake.

The International Training for Trainers, comprising 45 delegates from 24 overseas countries and 20 delegates from Australia, was an exciting and stimulating event, one which will be remembered for a long time. To be part of an international event is a broadening experience. All delegates, while learning and exchanging training ideas, also discovered a great deal about human relationships.

Victoria raised \$3500 to sponsor the three Indian trainers, delightful people who looked superb in their national uniform. We were also able to help sponsor one of the charming Rhodesian trainers. I hope many of you were able to meet these people as they travelled about the country. We were grateful to Sir Henry and Lady Winneke for hosting a reception at Government House, one of the highlights of their visit. We will not forget the Guiders' Own or the Closing Ceremony, when a spokesman from each delegation thanked Australia for organising the event and Victoria for hosting it.

My thanks to those who provided hospitality for delegates before and after the training. This was greatly appreciated and enabled them to see more of Victoria.

Congratulations to the Australian Planning Committee chaired by Miss Maureen Williams, and to the Victorian Hostess Committee headed by Mrs Verna Surry, for making the event such a success. Thank you everyone who helped at the training in any way at all.

Attending the official opening of the Triennial Conference of the Travellers' Aid Society, I was impressed and interested to learn that 224,000 people were helped in Melbourne last year. The 182 Collins Street Centre is open every day from 9.30 a.m. to 7.30 p.m. and anyone taking Brownies for outings on a weekend could go there, buy light refreshments and rest in the lounge, but I suggest you notify the Centre beforehand.

The opening of the C.W.A. State Conference was well attended, and, listening to reports, I noted that these ladies work very hard, and are involved in many varied activities.

Acheron, Hume and Outer Eastern Regions joined together for a conference at Yea. Attendance was excellent, as was the programme with the theme 'Care, Courtesy and Communication'. Mr John Smith of the God Squad gave an inspiring address, and the Brownie, Guide, Ranger, Local Association and International Advisers were present, sharing their knowledge and experience during Section and question time. It was a happy, stimulating day, and I thought the combination of country and outer metropolitan regions a very good idea.

Tallaringa Trefoil proved at their Annual Meeting that they are always busy helping Guiding in many ways. At Britannia Park they have provided aids for the handicapped. Other Trefoil Guilds attended and I enjoyed meeting these happy, dedicated people.

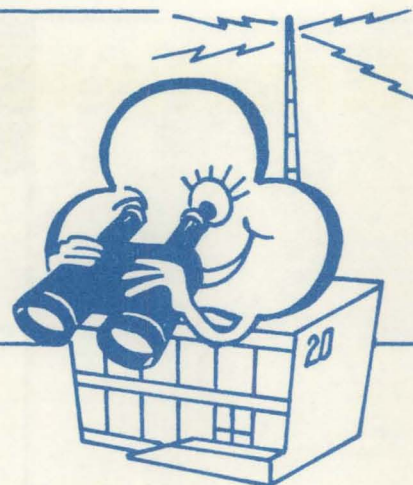
The Trainers' Weekend at Parkdale was attended by about 80 trainers, including our two trainers from Papua New Guinea, as well as visitors from interstate. Everyone considered it worthwhile and felt refreshed and ready to continue their vital work of training our leaders and commissioners.

The shortest day of the year has passed and we can look forward to slightly warmer weather again.

Kindest regards to you all,

*Marjorie E. West*

# REPORTING FROM RUSSELL STREET



## A DATE FOR YOUR DIARY

Sunday, 23rd September — The Official Opening of our beautiful new building at Camp Iluka, Shoreham.

## MOBILE GUIDE SHOP

The Mobile Shop will be visiting the Western District this month. It will open in the **Warrnambool Guide Hall** on **Wednesday, 25th July**, between 12.30 p.m. and 7.30 p.m.

On the following day, **Thursday, 26th July**, the Shop will be in the **Hamilton Guide Hall** from 2.00 p.m. until 8.00 p.m.

Please be sure that everyone connected with Guiding, including leaders, parents and girls, hears about the Mobile Shop visiting their areas. A great variety of books, badges, wall charts, gifts, stationery, uniforms and camping aids will be available for sale.

## CAMPING DEPARTMENT

**Needlewomen — Help Wanted** to make 36 patchwork quilts. Could anyone assist us by making patchwork quilts and donating them for the bunk beds at our exciting new Camp Iluka building. Please contact Mrs Jessie Lamond, C/- Headquarters, for a pattern and colour scheme — this is necessary to have all quilts meeting the same requirements.

## OLAVE BADEN-POWELL ROSE

We regret to advise that S. Brundrett & Sons have sold out of the standard form of the Olave Baden-Powell Rose but bush roses are still available at \$8.85 each, plus freight. Hurry your order in now if you do not wish to miss out.

## ANNUAL MEETING

The Association is re-arranging the format of its Annual Meeting this year and, instead of holding a general Annual Meeting at Kew Town Hall for which an open invitation would be issued through Matilda, the Annual Meeting of the State Council will be enlarged to include those members and friends who would like to attend. This meeting is scheduled for Monday, 1st October, in South Yarra, and visitors will be welcome. Any members — Commissioners, Guiders, L.A. Members, Trefoil Guilders — who would like to receive an invitation to this meeting are asked to send their names and addresses to Guide Headquarters by 31st August.

## INTERNATIONAL

**“Our Cabana”** — If you are planning to be overseas between February and May or between September and November next year, then we have some information concerning the programmes planned for “Our Cabana” which will interest you. For further details, write to International Adviser, C/- Headquarters.

## GUIDING PERSONNEL

Later this month Guiding Personnel will be typed up for printing so please may we have details of any alterations that have occurred since your Annual Reports were completed. It is important that Guiding Personnel is as up-to-date as possible when published and we need your help in keeping us abreast with every personnel change.

# International Training for Trainers

## From an organiser's point of view . . .

What an experience, what an opportunity to see Guiding in its widest form, 45 international delegates from 24 countries and 20 Australian delegates living together under the one roof — it was truly wonderful.

From the time everyone arrived on the Tuesday morning until the Closing Ceremony ten days later, how much was gained, shared and achieved will not really be known for a long while.

*We gathered all together to share our training ways  
And finished making many friends in ten rewarding days.*

*There was Ashadun from Bangladesh, and Sheena from U.K.,*

*And Phyllis, Linda and Mary had come from U.S.A.*

*Then Barbara, Dora and Bebe from Singapore had come*

*With Violet from Sri Lanka, Agnes and Teresa from Hong Kong.*

*Khatun and Anne from Kenya, with Cicely from Jamaica,*

*And Olive, Zakiah and Ang Jong travelled from Malaysia.*

*Then came Julie from South Africa, Tahira from Pakistan,*

*Litia, Sera and Pauline from Fiji, and Yasuko from Japan.*

*Then Zee and Jeanette from Canada, and Indra from Nepal.*

*From India Jagadamba, Surinder and Padmavati, I recall.*

*From the Philippines came Salud, Estella and Roncesvalle,*

*From Thailand, Preeda and Eraporn, and Sylvia from Israel.*

*Beverley, Joy and Mary crossed the water from New Zealand,*

*Ruta from the Gilbert Islands, Joan and Marjorie from Rhodesia.*

*We welcomed Kwy Ja and Sung Sook who travelled from Korea,*

*And Hitolo and Mary came from Papua New Guinea  
Each State within Australia also sent a delegation.  
We felt united, one and all, in our world association*

Whether we were learning to make and throw boomerangs or trying to make "Grimwade" sheep, or visiting Britannia Park and meeting brownies, guides, ranger guides and leaders, this international training showed us that people of many nations,

regardless of colour or creed, can live and work together in happy fellowship and that Guiding is indeed a wonderful movement.

—V.J.S.

## Through the eyes of a delegate . . .

Well at last the big day arrived and I was standing in the coffee lounge at M.C.E.G.G.S., South Yarra, for the start of I.T.T. I was surrounded by the laughter and chatter of lots of people, every shape and colour you could imagine, but all with one common aim, Guiding.

Being Victorians, we were used to our weather, but some of our visitors were feeling the cold very much. They had warm smiles but, oh, such cold hands.

Friendships begun on this day will last for a long while after the training has finished.

We were kept very busy with sessions which covered training aids, audio and visual with tape recorders, overhead projectors, slide making, how to make a movie, and lots of other interesting ways to improve our training methods. Discussion groups were very helpful because there we learned of training in other countries with different living conditions, religions, etc.

The opening ceremony was very impressive with official guests, speakers and delegates each carrying out special parts. Each delegate carried the flag of her own country on to the stage and presented a greeting of welcome and as the World Song was sung the flags were carried from the stage to line the sides of the hall. Then we relaxed as we were entertained by the Strolling Players, a marvellous group of guides and ranger guides who presented a truly professional performance.

We went on several outings to Healesville Sanctuary and Britannia Park and an historical tour of the city, late night shopping, to afternoon tea at Headquarters and to Government House.

A highlight of the training for me was the time after our evening meal when we shared songs, dances and photographs with each other, especially the nights when Teresa and Agnes, in full costume, enacted a Chinese opera and when Sung Sook and Kwy Ja performed a colourful and spectacular Korean Fan Dance — and when Marjorie (from Rhodesia) sang — no one could resist joining in with her.

I.T.T. was a wonderful happening.

—WILMA ESCOTT.



**WELCOMES**



**FRIENDSHIP**



**AUSTRALIA**



# I.T.T.—a time

Dear Mrs West,

I would like to thank Victoria for being such a wonderful Hostess State for the International Training for Trainers. All attending "I.T.T." were impressed by the tremendous support given so readily by your executive and by the Brownie, Guide and Ranger Sections, leaders and trainers as well as Trefoil guilds and local associations.

Your International Committee deserves special mention, not only for their fund-raising to sponsor India and Rhodesia, but also for the practical assistance given during the training.

Our thanks go to those who welcomed us to Britannia Park and to Guide Headquarters. All enjoyed attending the reception at Government House and we thank you for arranging this. We are indebted to the Strolling Players for providing such a polished performance for the Official Opening and to the young leaders and rangers who assisted at the official opening and the Guides' Own Service.

MATILDA



IDEAS



TRADITIONS



GIFTS



# for Sharing

We very much appreciated the contribution made to the training programme by the Victorian training team and we thank them for the time given so readily. The leisure activities also proved a great success and we are grateful to those who provided them.

Special thanks are due to those who contributed so much to the day-to-day running of the training, by helping with domestic chores and ensuring the comfort and well-being of those attending. The staff at Guide Headquarters were most helpful and their assistance invaluable. We were fortunate also to have the support of so many people in arranging and providing gifts, hospitality and transport for the delegates.

Yours sincerely,

—MAUREEN WILLIAMS,

Chairman of Planning Committee,  
International Training for Trainers.

## 70 YEARS OF GUIDING

Guiding will be 70 years old in 1980!

How about a birthday celebration?

We asked for ideas and the following have been suggested; so brownies, guides, ranger guides, rangers — which is it to be?

1. **Get Together in 1980**, with an international flavour.

Country units could link with city districts for a special weekend. Ideas on where to go and what to see would help all to explore Melbourne on the Saturday before picnic tea in the Gardens. With the coming of darkness the Myer Music Bowl could become the venue for an International Festival of displays and songs.

Sunday could be left for locally arranged events to seal the friendships made.

2. **A Pageant of Guiding**. Twenty years ago Victorian Guides staged a spectacular pageant which has never been repeated. Hundreds of girls starred in the performance of Guiding from Brownsea Island to the present day. Groups in both country and suburbs volunteered to practise special parts which were combined at the Friday night dress rehearsal into a blaze of colour, girls, music, action and laughter at the Olympic Pool. City units hosted their country friends and all attended the weekend performances. Those who remember it say, "Could we do it again?"

3. **Inter-Region Field Frolics**. This idea combines the opportunity for two or more regions to get together to plan "their own thing", with it happening on the same day for all regions throughout Victoria.

The event would be an outdoor day for families and involve a wide variety of games and activities like those created for "Life Be In It", novelty events, barbecue, etc.

No event will be successful unless the majority of units want it to happen — so we ask each unit (Brownie, Guide, Ranger Guide, Ranger) to post your vote by 20th August to —

"70th Birthday",  
Girl Guide Headquarters,  
20 Russell Street, Melbourne, 3000.

Please state your unit name and use preferential voting for:

1. International Get Together.
2. Pageant of Guiding.
3. Field Frolics.



### I.Y.C.

As part of our contribution to IYC, with our Guide Company, we organised an "Activity Afternoon" for local children. The Council kindly supplied materials and we provided the knowledge and enthusiasm to teach pottery, macrame, weaving, dough-art, knitting and hike cookery. It was great to see so many children enjoying themselves.

We displayed Guiding photographs, too.

The day was such a success that we have been asked to organise another during the September holidays.

—1st WONGA PARK BROWNIE PACK



### NEW PROMISE BADGES

#### An Exciting and Historic Announcement

In 1978 all members were invited to vote on designs submitted for special Australian Brownie and Guide Promise Badges. The result of the voting throughout all States favoured designs No. 4 for both Brownie and Guide Badges and we are pleased to advise that the new badges are expected to be available at the Guide Shop within the next few weeks.



### MONKEY BUSINESS

Crystal and Tish, formerly organ grinders' monkeys, have a new job — helping physically handicapped persons.

Mary J. Willard, a psychologist and consultant at Tufts New England Medical Centre, initiated the project to train monkeys as aides for quadriplegics. She hopes the monkeys will become as useful to physically handicapped persons as guide dogs are for many blind persons.

The two capuchin monkeys, which are very gentle by nature, have learned to perform such tasks as opening doors, turning on lights, fetching books, answering the telephone, and shopping for groceries (not just bananas).

Two more monkeys are now in training and will soon join the ranks of the employed.

(from "Mobility".)



---

# Introduction to the Movement and In-Service Training

---

## To all Commissioners and Unit Leaders

Dear Guiders,

To allow a new unit leader to attend Stage 1 training without proper preparation is:

- (a) unfair to her;
- (b) time-wasting and most frustrating to other trainees who have had a good introduction to Guiding; and
- (c) makes difficulties for the trainers.

Yet it still happens far too often, and even in areas where there can be no possible excuse; where there are available a number of people who know Guiding, and several units in the area with no great distance or communication problems.

Published by Australian Headquarters, there are two pamphlets on this subject which all Commissioners should **have, consult** frequently, and **use**, particularly "**Coffee Chat . . . An Introduction to Guiding**", which gives headings and references for informal chats, and "**Introduction for Adult Leaders**", each one costing 6 cents in the Guide Shop. These are often available to Commissioners at Stage 1 training, but it is hoped any Commissioner would know these well before attending. If a Commissioner is new, she can invite another Commissioner or an experienced guider to join in her chats with a prospective guider, and thus herself gain knowledge and confidence.

The second requirement is that a new leader attends meetings of units **other than the one where she is helping or which she hopes to run**. And a period of weeks or months running a unit before she has had training **does not count**. It often does a lot of harm — mistakes already made are hard to eradicate. The number of visits to other units depends on many things:

- (a) how new the leader is to Guiding;
- (b) whether she is assisting an experienced guider in a well-run unit;
- (c) whether as a girl she experienced something of the eight-point programme;
- (d) isolation of the locality and distance to the meeting places of other units. (It is assumed she will have, or will make the necessary time. How else can she become a unit leader?)

It is not practicable to make hard and fast rules, but the Training Committee, through me, strongly recommends the following—

In suburban areas, and larger country towns, a prospective unit leader new to Guiding should attend six normal meetings, best with the same unit and consecutively, meanwhile being excused attendance at her own unit if she is an assistant. If she is already running a unit (which is wrong, since she is not trained for the task) either it can be put into recess, or have fortnightly meetings for two or three months, so the leader can be experiencing the necessary in-service training during the alternate weeks. Some with a background of Guiding may not need six visits, the Commissioner may decide that three or four are enough. But please, she **never** decides that such visits are not necessary.

Note that "Coffee Chat" says: ". . . she visits units and District meetings accompanied by another guider . . ." and this 'companion guider' (hopefully the District Commissioner herself) can do a great deal with helpful discussion on the meeting visited, especially in the country where distances are so great that six or even four visits are not possible. (At least one such visit is a **must**, and if this is all that can be managed, then there is great need for more hours of chatting together, including not only the headings listed in the pamphlet, but also discussion on portions of the Handbooks, since reading alone does not get many people very far, and some references to P. O. & R. and Matilda.)

The 'companion guider' will not be necessary if arrangements are made for the new leader to attach herself to one unit, for the leader of that unit will surely act as her counsellor and friend. However, for various reasons, sometimes the selected unit has been overloaded with many such visitors and a change is needed. By arrangement, the trainee leader may visit, say, four different nearby units, and thus see variety in the numerical size of units; she will meet different personalities of leaders and their girls, which often result in differing methods of approach to unit management and programmes, all of which can be discussed in friendly, not critical, spirit. My own opinion is

that, for certain people, this 'variety' approach, properly handled, can give a much wider basis of experience, which could lead, ultimately, to a better run unit.

Next month, my third and last letter in this series will include more detail of what may be done at, and what can be learnt from, these visits.

The blue form, Application for Training, has recently been updated and reprinted, to give further stress to the importance of this two-step preparation for training in running a unit, and asks for details of how many hours of chat, and how many visits to units, naming their leaders. Training Department, or its representatives, the region training advisers reserve the right to refuse to accept applications for Stage 1 training if this part of the sheet is blank, or the information given indicates but scant attention to proper preparation. I do know of one case (I hope it is unique!) where the district commissioner signed a blank form and handed it to the would-be trainee. It may indicate trust in the integrity of the prospective leader, but what a distressing lack of commissioner responsibility!!

Please help us to help you.

Yours sincerely,

—ENID BUNNING,  
Training Adviser, Victoria.



### INTERNATIONAL CAMP

To be held at Tara Campsite, Taylors Road, Silverdale, New South Wales, from 10th to 17th May, 1980.

This camp is to be known as "KUI COOINDA" (Kui — welcome, Cooinda — happy place).

Do not forget you only have until 1st October, 1979, to forward your applications (in writing) for this event to the State Camping Adviser.



### CROYDON 50 YEARS CELEBRATION

On Sunday, 5th August, 1979, at 11.00 a.m., there will be a Church Service followed by a Luncheon at Guide Hall. Displays by guides and brownies.

Further details are available from Mrs Ann Taylor, Croydon Girl Guides, c/- P.O. Box 389, Croydon, 3136. Telephone 729 1505.

Come to help us piece together the last 50 years.

# TREFOIL TALES

Cooper Guild's "Hoy" Luncheon was a fun day for those who attended. Before and after the very nice lunch there was great concentration as we all tried to dispose of our cards and be the first to shout "Hoy".

Trefoil members were called on to help in many ways during the International Training for Trainers. **Waverley** made the beds ready for the visitors and on linen changing days members from **Port Phillip, Carine, East Moorabbin, Cooper, Town and Country** and **Tallaringa** stripped and re-made the beds. Thank you to all who answered the call. Other members provided transport and helped in the kitchen. I am sure they enjoyed it just as much as I did. It made me realise what a large organisation Guiding is and how true the law about a Guide being a sister to all Guides.

The Jumble Sale organised by **Town and Country** raised \$300. A wonderful effort for one day's trading.

If you want information about **Town and Country's** Luncheon, 12.30 p.m. on 23rd August at 61 Clendon Road, Toorak, contact Marguerite Pritchard (92 3708) or Laura Gregory (20 3082).

**C.O.G.S.** are busy organising a luncheon and mannequin parade to raise money for their weekend at "Hilltops", Yarra Junction, in September. Yooralla Society Shopping Safaris are looking for pushers for Chadstone and Highpoint West Shopping Centres. If you would like to help by pushing a wheel-chair patient round shopping please telephone Miss June Richards (699 1888).

For those who remember Mrs Beryl Buist, I am told she is a patient at Ward G5, Willsmere Hospital, Princess Street, Kew (telephone 862 1233, extension 439). She has settled in well and is happy there and she does remember Guiding.

Miss Amy Bush, Victoria, and Mrs Isobel Nisbet, Queensland, are two of the delegates chosen to represent Australia at the 13th General Assembly in Bergen, Norway, in August. Congratulations to Amy and Isobel and our good wishes go with you and the other members of the Australian contingent.

Would you like to hear a member of the Victorian police lecture squad speak on "Role of the Policewoman"? Then come along to the **Waverley** Trefoil luncheon at Syndal North Guide Hall, Florida Crescent, Syndal, at 12.00 noon on 9th August, 1979. Donation \$2.50 and proceeds to B.-P./Trefoil Memorial Homes Project. Please telephone Mrs N. Hutchinson (232 9470) for particulars.

—M.S.

MATILDA

# SUPPLEMENTARY



# ACTIVITIES

As your new Supplementary Activities Co-ordinator, I would like to let you know I hope Supplementary Activities will now become more widely used to supplement the Guiding programme in your region.

I would like also to reassure you that while the SAC representative in your region is the person for you to contact, I am available and prepared to talk to people and to give advice on functions or activities.

Please let us know what you have been doing so SAC on the beat can report.

—ELAINE WALLBRIDGE,  
SAC.

## CRAFTY CAPERS CAMP

Here is a chance for guides and ranger guides to try their hands at all kinds of craft and make articles to take home.

This camp will be held at the Salvation Army Conference Centre, 14 Monaco Street, Parkdale, from Friday, 31st August, to Sunday, 2nd September, 1979.

The cost of the weekend, including craft materials, is \$22.00. Places will be allotted in order of application. So send in your application early.

## APPLICATION FORM CRAFTY CAPERS CAMP

Name.....  
Address.....  
Telephone.....  
Unit.....  
.....

Please list crafts in which you have a special interest. We will include as many of your ideas as possible.

## Parent's Permission

I am willing for my daughter to attend Crafty Capers Camp and enclose \$10 deposit.

.....(signed)

Please mail application form and deposit and stamped, self-addressed envelope to Mrs M. Wallbridge, 43 Longbrae Avenue, Forest Hill, 3131. Applications close on 31st July.

## SAC ON THE BEAT

**Glen Waverley District Brownies** invited Syndal and Highvale Brownies to a sports afternoon.

We played ball games and skittle and target throwing on a Round-Robin basis.

Fathers, rangers and friends helped to make the day a lot of fun.

**Vermont Guides** have been particularly active. They have made puppets with a view to creating their own aboriginal legend theatre.

Also the Brownies of Vermont had a boomerang-making day.



## GIRL GUIDES ASSOCIATION, VICTORIA IYC CONCERT

Date — Saturday, 1st December, 1979.

Place — Sidney Myer Music Bowl.

Time — 6.30 p.m. to 8.30 p.m.

What is it? — A concert given by the Girl Guides Association for the children of Victoria. We hope to invite other youth organisations to provide items in addition to those by the Strolling Players.

This will be the grand finale to IYC and you are all invited to bring the friends you have made through "Encouraging Encounter", and spend an evening with them. Proceeds from the concert will go to the World Association of Girl Guides and Girl Scouts. More details next month. Make sure you write the date in your diary and tell the girls in your unit that this will be a "fabulous" concert.



## AUSTRALIAN POST BOX

Earlier this year I received a letter from the Post Box Secretary of Japan seeking pen friends in Melbourne and Sydney for Yumiko Yamamoto. Yumiko is an Assistant Girl Scout leader aged 21. In December Yumiko is coming to Australia for a holiday.

First of all she will go to Tasmania as the main reason for her coming to Australia is to visit her pen-friend in Launceston. Yumiko and Edith were linked by Post Box when they were about eleven years old and have been friends ever since. Edith and her family have visited Japan and now Yumiko will come here.

Three people in Melbourne are writing to Yumiko and soon somebody in Sydney will write also. Several of our Guiding family hope to have the opportunity of meeting her.

What an exciting thing to happen because of having a pen-friend! International friendship is wonderful and within the grasp of brownies, guides, ranger guides, rangers and leaders through asking Post Box to arrange a pen-friend for them.

Brownies can write individually or as a pack through a Pack link. All other members of the Guide Movement can write individually. You need to be realistic about choosing the country to which you wish to write. Language presents difficulties. If you are able to write in another language besides English or if your parents can help, please say so. Unfortunately France does not respond to our requests.

When asking your State Post Box Secretary, Mrs C. Blackburn, "Lowland Farm", Macedon, 3440, for a pen-friend, you need to give your name, address, date of birth and alternative choice of countries. For quicker results it is best to indicate that "Any" country will be satisfactory. A stamped, self-addressed envelope for details of your pen-friend needs to be enclosed with your request. There is no limit to the number of pen-friends you can have.

Canada, Denmark, Finland, Japan, Norway, South Africa, Sweden, U.K., and U.S.A. are very helpful. Wales, Scotland and Ireland have separate Post Box Secretaries and are very good also. Holland needs older requests unless the Dutch language can be written.

Recently there have been many requests from ten and eleven-year-olds. This age group needs to write to English-speaking countries. There are not many requests from older girls.

Many older (13 to 18 years) overseas girls are waiting to write to Australia. Some are even older. These requests come mainly from Canada, Denmark, Finland, Japan, Norway, South Africa and Sweden. For contacts here it is much better to write that "Any" country will be acceptable. Germany asks for girls of fourteen and older who preferably can write some German. Switzerland likes to link girls with at least three or four years' experience in French or German. Italy's help is very slow and mainly for older girls. Greece is very helpful. The occasional requests from Singapore and Malaysia are all for girls of fifteen or older. Unit requests for older age groups are quite difficult to satisfy.

I would be happy to receive lots of requests from girls, aged 13 to 18 years, prepared to write to any girl already waiting for a pen-friend in Australia.

—C. M. WILLIAMSON,  
Australian Post Box Secretary.



### "ILUKA", SHOREHAM

We are thrilled and proud to announce that our "Log Cabin", which looks "fabulous" in the natural bushland setting at "Iluka", is nearing completion. I extend a warm invitation to all members of the Movement to attend the Official Opening on Sunday, 23rd September, at 1.30 p.m.

Bring your family and picnic lunch at about 12.00 noon if you wish.

Bookings for indoor accommodation (at this stage for 32 beds) will be accepted by telephone at Guide Headquarters on 1st August for the last weekend in September and for the following three months, i.e., October, November, December. On 1st September bookings can be made for January, February and March, on 1st October for April, 1st November for May to bring the bookings in line with those for Britannia Park, i.e., six months in advance.

There are maps available from the Camping Department at Headquarters for those who still do not know the way to "Iluka".

—JESSIE LAMOND,  
State Camping Adviser.





# ABORIGINES



This could be  
A TRUE STORY

What can you learn from a new member?  
LOTS!!!

Our unit has been delighted to have, at various times, prospective leaders visit to carry out their "In Service Training".

At the conclusion of a recent Pack meeting and while the leaders were sorting out the following week's programme our visitor was busy looking at the Handbook. Suddenly she asked, "Do many brownies take the Aborigine Badge?"

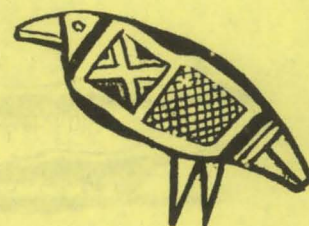
This question stunned me and although I tried very hard to bring one to mind, I had to admit that since I had been in the Pack (and I am too ashamed to say how long that is) we have NEVER had a brownie take that particular interest badge. Over the years we have had many brownies take Brownie Friendship Badge where they learn about countries which are members of the World Association but —

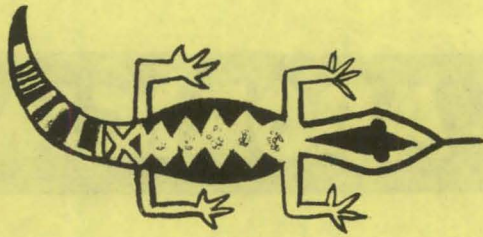
## NO-ONE, NOT ONE MEMBER

had I encouraged, stimulated, introduced or even co-erced into attempting this badge which helps them to learn about our country's first inhabitants.

We have held theme meetings on First Aid, Safety in the home, Hostess, House Orderly, Kniters and many, many more badges. WHY FOR SO MANY YEARS HAVE WE OVERLOOKED THIS BADGE?

Taking the Interest Badge booklet in hand I looked up the requirements to see if I could discover any reason for this sad state of affairs.





For your convenience the requirements for the badge are as follows:

**Aboriginal (An Aborigine's Head)**

1. *Compile a list of Aboriginal words, integrated into the English language. How many can you find? OR Compile a list of "place" names that are Aboriginal words. Try to find out the meaning of some of them.*
2. *Read a legend of the Aborigines. Be able to tell the assessor the story.*
3. *Tell the assessor about one well-known Aborigine (past or present).*
4. *Show a knowledge of tools, food, musical instruments and weapons used by the Aborigines. OR View a collection or visit a display of art or craft made by Aborigines and be able to tell the assessor about the things you saw.*
5. *Compile a list of foods gathered by Aborigines when they lived in their tribal state, and know how they gathered them.*
6. *What type of shelter did Aborigines live in, in the tribal state? What were these made of?*

The requirements are well within the reach of the Brownie age girl — the FAULT lies with ME, the adult leader for not introducing this badge into the unit.

LET US LOOK AT EACH CLAUSE TO SEE THE WAYS WE COULD USE THEM TO STIMULATE A BROWNIE'S INTEREST.

**Clause 1 — Words integrated in English language. How many more can you add to this list?**

1. Billabong
2. Jumbuck
3. Mulga
4. Humpy
5. Gunyah
- 6.
- 7.
- 8.
- 9.
- 10.

**CHALLENGE THE BROWNIES TO DISCOVER EXTRA WORDS**

— OR —

**Place Names**

- Cootamundra — Low lying place
- Dederang — Hail stones
- Derrinal — Ground parakeet
- Edi — Cold Wind
- Jeparit — Shell parrot

LOOK UP THE MEANING OF TOWNS IN YOUR AREA. (Good Book: Aboriginal place names — Aldo Massola.)

**Clause 2 — Legend**

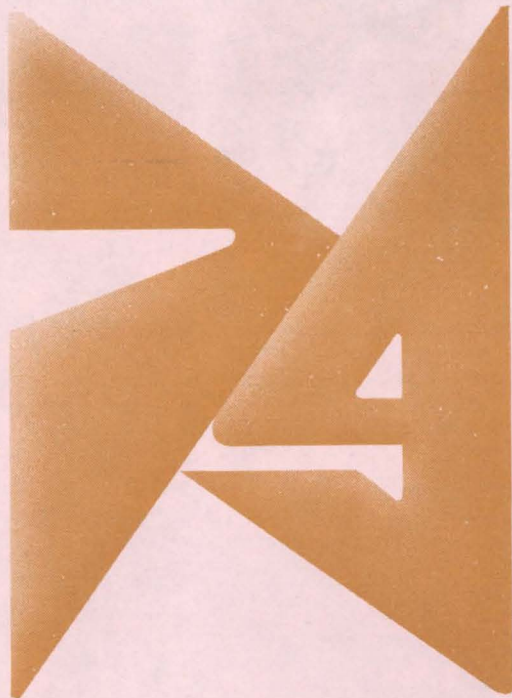
As a child I can remember we had aborigine legends printed in the school paper which was produced on a regular basis. I can even recall one, "Why the crow is black". Surely your school or local library would be able to provide a source for this information.



# GANG SHOW

REVISED  
BOOKING FORM

**Palais Theatre, St. Kilda,  
Sept. 6, 7, 8, 9, 13, 14, 15.**



**REVISED  
BOOKING FORM**

**GANG  
SHOW**

SEPTEMBER 6, 7, 8, 9, 13, 14, 15.

Presented by the Scout Association of Australia (Victorian Branch)

Melbourne Gang Show is 27 years young and still on the move. With color and comedy, costumes and lights, dances and toe-tapping songs, who wants to grow up?

The young team of 350 Scouting and Guiding members is already working hard to make the 1979 show reach even higher than the standards of previous years.

Don't miss the Gang Show look at cherubim and seraphim, buccaneers and Tyrolean mountaineers, cowboy psychiatry and football fever. There's also a Thai mimed pageant and the traditional foot-stamping finale.

If you're a Gang Show regular you won't want to miss another bright new show. And if you've yet to see a Gang Show, 1979 is a great year to get the Gang Show habit.

For the best seats, get your team organised **now**. Bring your Scout Group, Guide Company, club, school friends, workmates or family.

You can book now by mail through the Bryson Cinema. Personal bookings over the counter open at the Bryson on July 23. For great savings there are block bookings in groups of 10 seats, and this year children under 15 years get a concession of \$1 off the price of any **individual** seat (not block bookings).

**BLOCK BOOKING:**

To: The Bryson Cinema,  
184 Exhibition Street, Melbourne. 3000. Phone 662 1122 (4 lines)  
Cnr. Little Bourke Street and diagonally opposite Her Majestys.

PLEASE SEND THE FOLLOWING NUMBER OF BLOCKS (10 Tickets in each Block):

	STALLS	BACK STALLS	DRESS CIRCLE	UPPER CIRCLE
THURSDAY, 6 EVENING	\$32.00	\$23.00	\$23.00	\$21.00
FRIDAY, 7 EVENING	\$32.00	\$23.00	\$23.00	\$21.00
SATURDAY, 8 MATINEE	\$32.00	\$23.00	\$23.00	\$21.00
SATURDAY, 8 EVENING	\$32.00	\$23.00	\$23.00	\$21.00
SUNDAY, 9 MATINEE	\$32.00	\$23.00	\$23.00	\$21.00
THURSDAY, 13 EVENING	\$32.00	\$23.00	\$23.00	\$21.00
FRIDAY, 14 EVENING	\$47.00	\$37.00	\$37.00	\$32.00
SATURDAY, 15 MATINEE	\$32.00	\$23.00	\$23.00	\$21.00
SATURDAY, 15 EVENING		\$37.00	\$37.00	\$32.00

**INDIVIDUAL BOOKING:**

PLEASE SEND THE FOLLOWING TICKETS:

	STALLS	BACK STALLS	LOUNGE	DRESS CIRCLE
THURSDAY, 6 EVENING	\$4.50	\$3.50	\$4.50	
FRIDAY, 7 EVENING	\$4.50	\$3.50	\$4.50	
SATURDAY, 8 MATINEE	\$4.50	\$3.50	\$4.50	
SATURDAY, 8 EVENING	\$4.50	\$3.50	\$4.50	
SUNDAY, 9 MATINEE	\$4.50	\$3.50	\$4.50	
THURSDAY, 13 EVENING	\$4.50	\$3.50	\$4.50	\$3.50
FRIDAY, 14 EVENING	\$6.50	\$5.50	\$6.50	\$5.50
SATURDAY, 15 MATINEE	\$4.50	\$3.50	\$4.50	
SATURDAY, 15 EVENING	\$6.50	\$5.50	\$6.50	\$5.50

If seats are not available as requested above, alternative dates are: .....

Note: Please enclose a stamped, self-addressed envelope. Cheques payable to Bryson Cinema. No returns accepted. Evening performances at 8 p.m. Matinees at 2 p.m. Please keep block tickets together for theatre ushers. Children under 15 to have a concession of \$1 off Individual Seat Prices.

Name .....

Address .....

Scout Group  
or

Include Concessions  
and Adult in

Tel. No. .... Guiding Unit ..... TOTAL. \$ .....

Individual and Block Bookings by mail now.

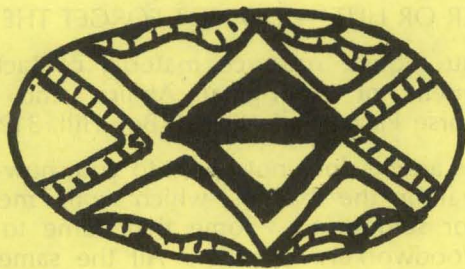
Personal Bookings at Scout Shops and the Guide Shop and Bryson Cinema from July 23rd.





I can also recommend THE DREAMTIME BOOK by Ainslie Roberts — Text Charles P. Mountford — and several years ago the Australian Red Cross published a dreamtime story on the Sidney Myer Music Bowl.

WHAT A WONDERFUL OPPORTUNITY TO READ OR TELL A LEGEND TO THE PACK AND THEN GET THEM TO ACT IT OUT USING: mime, drama, interview, or as a "This is your life" segment.



**Clause 3 — Well-known aborigine from your own State.**

From the list printed below underline the Victorians: Namatjira, Sir Douglas Nicholls, Bennelong, Rossalyn Watson, Neville Bonner, Nessie Skuta, John Atkinson, O. Yuripingu.

Find out as much as you can about all these people.



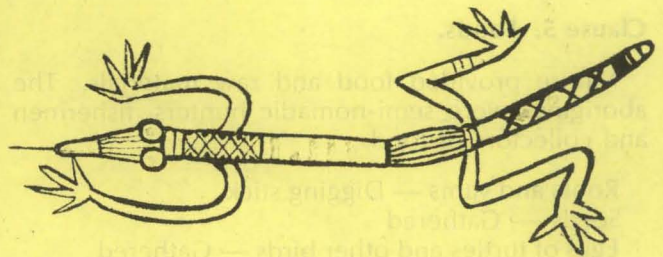
**Clause 4 — Art or Craft, Decorative Art**

Aborigine objects were decorated with naturalistic and geometric art designs either painted, engraved or burnt into the surface — used on spears, shields, baskets, boomerangs and such like. COULD THIS ART FORM BE INTRODUCED INTO THE UNIT?

**Bark Paintings**

In eastern Arnhem land the paintings consist of remarkable compositions which can cover the whole surface of a piece of bark. They incorporate totemic animals and plants; ancestral beings, clouds, rain, waves and other natural features of the land, sea and sky.

AT THIS TIME OF THE YEAR TREES ARE LOSING THEIR BARK. POSTER PAINT IS A GOOD MEDIUM FOR BARK PAINTING. TRY TO USE THE PROPER COLOURS. THEY CAN BE PAINTED ON A BLACK-YELLOW OR RED FIELD.



**Rock Engravings and Cave Paintings**

Rock engravings are widespread in Australia where three techniques are known. The simplest engravings are short, narrow grooves arranged haphazardly. The finest known outline engravings occur on large expanses of sandstone in eastern New South Wales where figures of animals, human and ancestral beings, weapons and implements may be seen. Many fine compositions occur. Most figures are life-sized, the largest known is 60 feet long. The intaglio designs found in the interior of Australia are hammered or picked all over their surface. They consist of small figures of animals and their tracks, weapons and human figures.

PERHAPS YOUR UNIT MIGHT LIKE TO TRY THE INTAGLIO TECHNIQUE. OR PERHAPS YOU MAY DECIDE TO PAINT SOME ROCKS IN AN ABORIGINE STYLE OR MAKE A DIDJERIDOO AND DECORATE IT USING PAINT OR DYE FROM NATURAL MATERIALS. (THE INNER ROLL FROM DRESS MATERIALS MAY BE USED AS A BASIS FOR THIS WORK.)

OTHER CRAFT WORK: WEAVING — MAKING BOOMERANGS — AND SO ON.

**Utensils**

- A digging stick
- Bark container

Stone implements were specialised and shaped for a particular function such as cutting, scraping, adzing, boring, chapping, pounding, and so on.

— OR —

VIEW A COLLECTION OR VISIT A DISPLAY OF ABORIGINE CRAFT.

Use local resources or your town or capital City's Museum.



## Clause 5. Foods.

Nature provided food and raw materials. The aborigines were semi-nomadic hunters, fishermen and collectors of food.

- Roots and yams — Digging stick
- Seeds — Gathered
- Eggs of turtles and other birds — Gathered
- Sugar ants — Dug up for their little bags of sweet honey
- Honey from wild bees — Gathered
- Witchety grubs — From bark or ground
- Lizards and other small animals — Caught
- Kangaroos, Possums, Emus — Speared or caught in traps
- Fish — Speared
- Off Northern Australia —
- Turtles, Dugongs, Porpoises and large fish — harpooned.

ON AN OUTDOOR DAY SEE IF YOU CAN CATCH A LIZARD!!!

N.B. The preceding programme has been worked out for the Brownie Aborigine Interest Badge, but could be used/adapted for any section. The corresponding badge for guides is called the Australian Aborigine Badge.

## Clause 6. Shelter

In the tribal state the Aborigine lived in a shelter or hut which consisted of a framework made from branches and covered with a variety of materials found in different localities — leafy branches, grass, bark, reeds, palm trees and seaweed, sometimes smeared on the outside with mud. Communal huts were often built in cold weather or in mosquito infested localities.

AN ACTIVITY FOR YOUR UNIT. MAKE A SHELTER OR HUT — DO NOT FORGET THE MUD.

If you require resource material contact: The Department of Aboriginal Affairs, 2nd Floor, Whitehorse Plaza, Main Street, Box Hill, 3128.

If this article does not apply to you, how about investigating the badges which your members **never** or **seldom** try. Some that come to mind are: Woodworker: Signaller. All the same principles apply. If you make use of all the syllabi, humblest apologies.

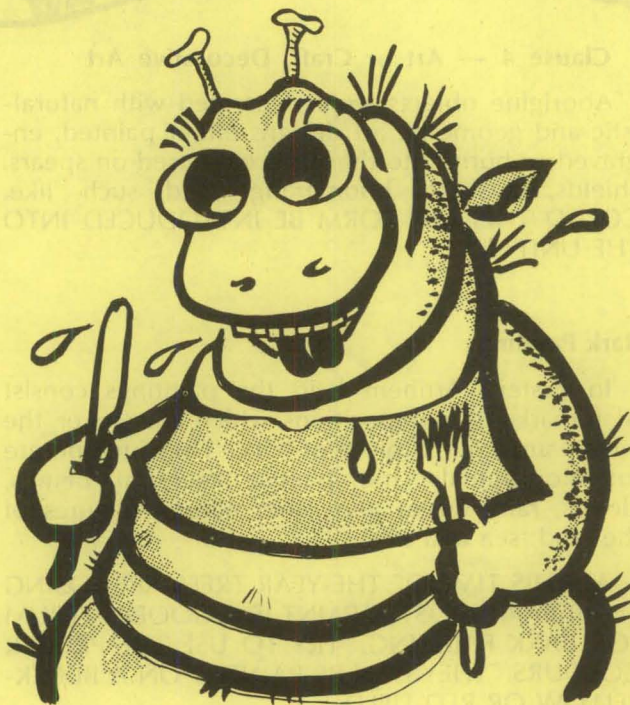
# GOURMET GRUB

## "Witchetty"

Witchetty grubs are the larvae of a large moth and may be found in most parts of Australia. They live in wood in tree trunks or roots and their presence may be indicated by a heap of sawdust at the base of a tree or by the sickly appearance of a small wattle.

First catch your witchetty. Using a bent wire or hooked stick, hook them from the hole which is trickling sawdust — or explore the roots. To eat them, withdraw the entrails, because they are full of partly digested wood, by holding the head between the forefinger and thumb of one hand and pinching the skin around the anus with the other hand. Then pull. To eat them raw, bite the body off close to the head. The best way to cook them is to toss them into hot ashes and gut them after they are cooked. Other connoisseurs recommend them fried.

From "Stay Alive" by Maurice Dunlevy, Australian Government Publishing Service — obtainable from the Guide Shop, \$2.50.



# LOCAL



# ASSOCIATION SECTION

## Thought for the month

Money saved for a rainy day buys a much smaller umbrella than it used to.

## LOCAL ASSOCIATION CONFERENCE

### "Operation Back-up"

Tuesday, 7th August, 1979.

Springvale Town Hall.

### Last minute reminders

Bring paper, pencil and concrete ideas!

If you have forgotten to return your application form, we will accept registrations up until Conference Day, but please bring your own lunch. We regret we will be unable to refund money for last-minute cancellations.

**Treasurers**, please ensure that your district's personal accident insurance is up to date and adequate. If in doubt, check with Mr Greenfield at Mercantile Mutual (telephone 67 7332), who handles all Local Association insurance policies.

### Fact and Fun Days

Our Local Association adviser would like commissioners to know that they are welcome to attend Fact and Fun Days. Uniform is not necessary.

### "Two shops and a pub"

Two brownie mothers from Caramut attended the Fact and Fun Day at Lake Bolac recently. Caramut (near Mortlake) is a very small farming community and the Local Association supports its one brownie pack enthusiastically. With a membership of 13 scattered families, meeting attendance averages about nine members.

Funds are raised by means of coffee parties and by street stalls which are held on Saturday mornings outside the shops to catch everyone as they come in from the outlying areas to collect their papers. As most of the children travel quite long distances by bus to school each day a guide company has never been viable. A few brownies have become lone guides over the years and one has gained her Queen's Guide award in this way.

## Salamat, Konnichi wa and Jambo!

Your schoolchildren's early and oft-repeated language lessons **do** come in handy when you receive a last-minute invitation to the opening of the International Training for Trainers.

I wish more Local Association members could have attended this proud and moving event. Too often our involvement stops at the guide-hall door or with the fund-raising. I wish you too could have seen our capable rangers act as hostesses that night, watched the colorful procession of flag-bearers and delegates wind through the hall and onto the stage, heard our own Chairman of the World Association, our Chief Commissioner for Australia and our Victorian State Commissioner welcome our guests, have listened to the overseas delegates giving their individual greetings to Australia, watched our Strolling Players entertain and welcome the delegates in such a spectacular way and, finally, had the opportunity to speak to so many of the visitors at supper-time.

Those we spoke to were very interested to find out what the badges meant (Local Association membership and long-service) and in what way parents were involved in Australian guiding. In some of the Pacific Island countries, for example, guiding is organised by the schools and they are having difficulty in switching over the supportive role to parents. It was a thrill to meet the Indian delegates to whom so many of you had given financial support.

My girls (one hostess and one Strolling Player) came away with badges for their camp hats and blankets as mementoes which will always remind them of a truly international guiding event.

## RECIPE CORNER

**Conference Committee Orange Cake** (with which we regale ourselves at meetings).

3 eggs, their weight in sugar, butter, S.R. flour, rind of 1 orange, juice of 1/2 to 1 orange.

Cream butter and sugar, add eggs one at a time, beating well after each egg. Add half the sifted flour and beat well. Add juice and rind and mix. Add rest of flour. Bake in moderate oven (350°-375°) for 45-60 minutes. Ice with icing sugar mixed with orange juice.

\* \* \*

Please send contributions for this section to Mrs W. Pye, 31 Kerferd Street, East Malvern, 3145.



### HAPPY BIRTHDAY

Brownie Guides of 3rd Morwell Pack celebrated the Pack's 25th birthday recently with a special party. Pride of place on the party table was given to the 25th birthday cake especially decorated in Brownie colours.

—M.T.

### SQUAB FARM

We visited a squab farm where we saw lots of pigeons in big cages. We met a donkey called Stanley and a horse called Freckles. We saw many different birds and collected ever so many feathers. There were guinea pigs and peacocks, cats, dogs, goats and a rooster too.

—MICHELLE ENDERSBY,  
SANDRA MACRAE,  
3rd Montmorency Brownie Pack.

### GUIDING FRIEND

While on holiday in Swan Hill I found a tree labelled — PLANTED BY THE BROWNIES—RIBBON OF GOLD, 1976.

Finding this friend in Guiding — not a human member of our world family, but a tree, made my day complete.

—J.C.

### WALK FOR THE CHILD

With their leaders, groups of guides and brownies from Cowes District, carrying banners, walked up and down Thompson Avenue, Cowes. Passers-by wondered what they were doing and many stopped to ask.

At 9.00 a.m. four small groups started their 'Walk for the Child' in connection with IYC. Some walked for one hour but three leaders and some brownies walked for three hours. As they walked they collected coins, which when added to a \$25 donation from the Lions Club of Phillip Island totalled \$200.

—J.C.

### AUSTRALIAN LITERARY AWARD

Australian Public Relations Adviser thanks the following Victorian members who sent contributions for the Australian Literary Award Competition:

Juliana Raiola (1st Bulleen Brownie Pack), Janet Knott and Joanne Nankiville (Cobram East).



While we were on Pack Holiday at Britannia Park recently, we were invited to visit a small farm to meet some donkeys and learn about them. We took it in turns to brush them and ride in a donkey-cart before having a picnic in the sunshine. All our apple cores were eaten by the donkeys.

—1st WONGA PARK BROWNIE PACK.



**B.-P. EMBLEM**

# GO GUIDING

## **HOLD AN EIGHT POINT BADGE AWARDED WITHIN THE LAST TWELVE MONTHS**

An eight point badge is assessed on a girl's participation in the company programme during the past 12 months. It is considered on her contribution to the planning and arranging of patrol and company meetings, her regular attendance at these activities, and how well she tried to participate and co-operate when she was there.

No girl who has not contributed and participated well in unit activities can be considered to have earned the B.-P. Emblem, for Guiding tries to encourage girls to 'give', not just 'take'. Every girl is a member of a patrol and must do her part in whatever project that patrol, or her company, is involved. Her behaviour and attitude must be that of co-operation for the B.-P. Emblem is not for the guide who concentrates only on gathering badges for herself whilst ignoring her responsibility to the group.

It is through the award and assessment of an eight-point badge that a candidate's character is judged.

## **SERVICE FOR THE CHALLENGE EMBLEM**

When discussing the Challenge Emblem in April I neglected to comment on clause 5 — Service challenge — which is part of the Challenge Emblem.

This service challenge has no connection with the Service Flash. This is a challenge which could take 3-5 hours to complete, either in one day, or spread over 1-2 weeks. It is decided on by Patrol Leader Council, which should consider the following when designing same:

1. The service should be needed.
2. It should be within the ability of the guide, taking account of the girl's age and experience.
3. It should be capable of being completed in a few hours and not be a service which requires continuation or exposes the girl to any risk of safety.

Examples could be: gardening for the ill or elderly; folding, enveloping, delivering notices for a voluntary agency; cooking or serving afternoon tea or similar for a group such as the elderly citizens; sewing together knitted squares for a blanket for a Brownie Holiday house.

## **OBTAINING THE B.-P. EMBLEM**

Before the badge can be obtained, the girl's B.-P. card and all relevant badge certificates must be sent to the region B.-P. co-ordinator **before the girl is 14½ years.**

The region B.-P. co-ordinator will check these records and if she has any queries will contact the guider. If records are in order, the card will be sent by the co-ordinator to the region commissioner for her signature. The region commissioner will return the card, usually accompanied by a congratulatory certificate, to the guider in the **stamped addressed envelope** which should have been included.

The region commissioner's signature on the card is authorisation to purchase the emblem.

The following list is to help guiders know who should sign badge certificates and the card as it relates to the B.-P. Emblem. Read in association with the syllabus.

## **Keeping the Guide Law**

1. Discuss Law and Promise — signed by district commissioner.
2. Teach a recruit — signed by own guider.

## **Enjoying the Out-of-doors**

1. badge Camper — signed by division camp adviser.
2. badge — signed by tester approved by district commissioner.

## **Thinking for yourself**

Patrol Pennant — signed by representative of Patrol Leader Council.

OR

Australia badge — signed by tester approved by district commissioner.

## Giving Service

### Challenge Emblem

Clauses 1 to 4 badge — signed by own guider, if qualified.

Clause 5. Service and clause 6. 8 point badge — signed by representative of Patrol Leader Council.

### OR Service Emblem badges

1 badge and 2 badge — signed by tester approved by district commissioner.

**Note:** Girls must be 13 or over when tested for Childnurse, First Aid, Firefighter, Homenurse and Lifesaver badges.

## Exploring the Arts

1. badge and 2. badge — signed by tester approved by district commissioner.

## Keeping Fit

1. badge and 2. badge — signed by tester approved by district commissioner.

## Becoming a Homemaker

1. badge, 2. badge and 3. badge — signed by tester approved by district commissioner.

## Getting On With People

1. Guide Knowledge — signed by tester approved by district commissioner.

2. Ranger Guide activity — signed by Ranger Guide guider — also to include brief description of activity.

3. Guide gathering — signed by guider-in-charge or her deputy — also include short description of activity.

**Note:** The description of the activity and gathering can be written by the guide or by the guider.

**Eight Point Badge** — signed by representative of Patrol Leader Council.

## PRESENTATION OF THE BADGE

It is up to the unit to decide whether a special ceremony is performed to present the badge, however it is recommended that the arrangements should not be too elaborate.

—YVONNE JAMES.

## THANK YOU

Mrs Joan Nikoliev wishes to thank her many Guiding friends for the very happy surprise evening and beautiful gifts they presented to her on her recent retirement as West Metropolitan Region Commissioner.

## 60 YEARS AT CAMBERWELL-HARTWELL

Camberwell-Hartwell District held its 60th Annual Meeting recently.

This district is one of the three oldest in Victoria, 1st Camberwell Guide Company being formed at Fintona Girls' School (then in Burke Road) in 1917.

Highlight of the evening was the cutting of six beautiful cakes, each representing one decade of the 60 years.

The honour of cutting a cake went to people who have contributed greatly to Guiding in this area.



Left to right in the photograph they are —

Mrs Jenny Riedel, daughter of one of Camberwell's oldest guides from the Fintona Company, a 4th Camberwell guide and now leader of 2nd Camberwell Brownie Pack;

Jill Champ, presently a patrol leader in 2nd Camberwell Company.

Miss Decima Hansford, of East Hawthorn, a member of the original Guide Company at Fintona in 1919;

Mrs Dorothy Renard of North Balwyn, a 3rd Camberwell Guide in 1924 and now a member of our State Council;

Mrs Edna Lewis, founder and first Brown Owl of 1st Hartwell Brownie Pack from 1931 to 1938 (she travelled from Warrnambool, where she is still active in guiding, to be present);

Mrs Margaret Rutherford of Canterbury, associated with Camberwell guiding since 1948 as a guide, a ranger and a leader.

During the evening Mrs J. Rowland of Surrey Hills was presented with the Wattle Award for long and meritorious service to guiding. Mrs Rowland, who recently concluded a term as District Commissioner, and is currently leader of 2nd Camberwell, has been involved in Guiding in many capacities over a 30-year period.

Rangers, guides and brownies entertained parents and the many other guests, part of the programme being a parade of international uniforms and old uniforms dating back to the very early days, providing nostalgia for some and fun and laughter for others.

—ELINOR HOGG.

# RANGERING AROUND

## TRIP TO THE SNOW

Saturday, 4th August.

Join in an exhilarating day on the slopes of Lake Mountain! Just what you need to get your blood flowing and to take on anything at all! Buses will depart 7.45 a.m. from Girl Guide Headquarters and return at 6.00 p.m. Application forms with July newsletter.

## LOCH ARD GORGE WEEKEND

5th-7th October, 1979.

Come to Sherbrooke River in the beautiful Port Campbell National Park. See where the Loch Ard was wrecked, visit caves, observe mutton birds, view the Twelve Apostles and experience the thrill of seeing the bottomless blowhole — and much more.

Ranger guides, rangers and leaders, numbers are limited, so be early. Application forms with July newsletter.

## FOLK FEST '79

14th-16th September

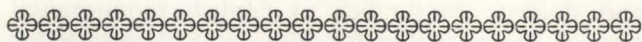
During this weekend the first Ranger Section Folk Fest will take off — at Britannia Park. This will be a weekend of FOLK FUN — workshop — music and dancing — and, as a climax, we will put on a show! Application forms available with July newsletter.

## DARETON INVESTITURE

Five Dareton ranger guides were invested at a ceremony held on the Dareton sand bank on the New South Wales side of the Old Man Murray River, overlooking a sweeping bend.

Later, the sun drifted behind red gum trees as the sound of kookaburras swept through their branches and we relaxed by our campfire.

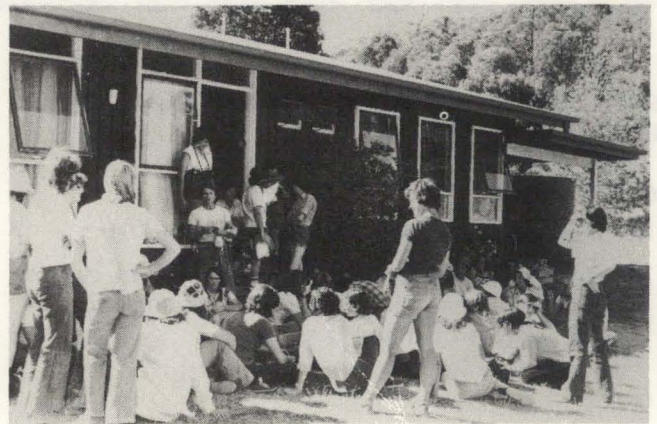
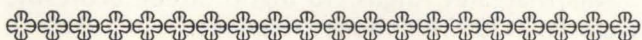
—KAYE LEVER,  
Dareton Ranger Guide Unit.



## 1980 GUIDE CALENDARS

Public Relations Department has ordered extra calendars for those local associations or units which may have forgotten to order by 31st May.

Please contact this department immediately if you wish to use the sale of calendars as a fund-raising idea.



## "TAPESTRY"

"Tapestry" is the beautiful property left to the Girl Guides Association for the use of the Ranger Section by the late Lady Ann Rylah. The property consists of 66 acres of bushland at Strathewen, bordering on the Kinglake National Park.

Buildings include a house, Panda Hut, shelter and toilet block, and a delightful creek runs through the property. Wildflowers and birds abound, also wallabies, wombats, echidnas, foxes, rabbits and possums.

It is ideal for light-weight camps, and indoor accommodation is available in the house and Panda Hut.

Following are camp fees and charges for the house.

Campers — \$1.50 per person for the weekend, including Friday night.

Panda Hut — \$1.50 per person for the weekend, including Friday night.

House — \$2.00 per person per day, or \$4.00 per person for the weekend, including Friday night.

A minimum of \$10.00 will be charged for the weekend.

Booking secretary is Miss M. Owen, telephone 45 3657.

# RANGER GUIDE LEADER'S CAMP QUALIFICATIONS

## RANGER GUIDE LEADER'S LIGHTWEIGHT CAMP PERMIT

### Qualifications

- i) Be a warranted Ranger Guide leader.
- ii) Have attended at least four lightweight camps and been responsible for the organisation of at least two of them.

### Test

As in P.O. & R., Rule 37, page 39, with the following addition:

D. Campcraft (ix) Use a map and compass.

### Own unit only

**Minimum number for a test camp — 4**

**Maximum number for any camp — 15**

## RANGER GUIDE LEADER'S LIGHTWEIGHT CAMP LICENCE

The holder of the Ranger Guide Leader's Lightweight Camp Licence is entitled to take charge of any type of Ranger Guide camp, subject to any special conditions in P.O. & R. Rule 36, 3(c) and 4. When adventurous activities are included in camps a qualified person must be in attendance.

### Qualifications

- i) Hold the Ranger Guide Leader's Lightweight Camp Permit.

### Test

Organise and conduct a Ranger Guide camp for a group of at least 15 ranger guides, who may be members of her own unit and/or of units other than her own, taking charge of the camp for a minimum of two consecutive nights.

The activities at this standing camp would demonstrate the leader's greater skills and knowledge of camping, maps and compass.

### Own Unit and/or members of other Unit(s)

**Maximum number for a test camp — 15.**

**Maximum number for any camp — up to 40, with at least one other leader.**

## RANGER GUIDE LEADER'S EXPEDITION LICENCE

### Qualifications

Hold the Ranger Guide Leader's Lightweight Camp Licence.

### Test

Plan and carry out an expedition for a party of at least 15 ranger guides who may be members of her own unit and/or units other than her own, taking charge of the expedition for a minimum of two nights.

The holder of the Expedition Licence would be expected to be a competent lightweight hiker with experience and training in varied terrain and weather conditions. She should gain knowledge of: snow conditions, exposure, heat exhaustion, and other emergencies likely to occur on mobile camps.

She should be able to show ranger guides the necessity for hygiene, fire safety, sanitation for mobile camps, and demonstrate advanced compass and map use.

### Own Unit and/or members of other Units

**Minimum number for a test camp — 15**

**Maximum number for any camp — No restriction on numbers, but there must be one leader for every six ranger guides.**



## BRASS RUBBING

Hold a brass rubbing night with your brownies and guides. Facsimilies of English monumental brasses are available for hire, or a demonstrator can come to your meeting.

**Country Kit.** Miniature facsimilies, materials and instructions can be rail freighted to country areas.

**Christmas Cards.** Take a rubbing from a nativity scene plate. All materials supplied — cards 8c each, plus postage.

Mrs Margaret Angus, 16 Ingrid Street, Scoresby, Victoria, 3179. Telephone: 763 6811.





### BRITANNIA PARK

Now is the time to plan a visit to Britannia Park where wattles bursting into bloom cheer us even though the weather is still bleak. Notice the rotary clothes line, erected near Guide House for the use of house visitors. It comes with the courtesy of guiders who attended a training week in January. Stroll up to Ivanhoe site to see the progress on the Monica Canobbio Cabin which is taking shape rapidly with the help of a team of voluntary workers.

Mr. and Mrs Fraser enjoyed a well-earned holiday in June, and our grateful thanks go to Mr and Mrs Lock, who looked after the property so well during that time. Our list of Maintenance Fund contributors is encouraging this month. Thank you everyone.

Altona Local Association (28th December, 1978), Macedon Division (5th January, 1979), and, in May, Mitcham Local Association (1st), Tallaringa Trefoil Guild (2nd), Red Hill South Local Association (3rd), 1st Mount Waverley Pack (4th), Ararat Local Association (5th), Lalor Local Association (7th), Bulleen Local Association (9th), Eastern Suburbs Trefoil Guild (13th), 2nd Blackburn Guide Company (15th, 16th), Preson Local Association (18th), Mrs L. Gregory (22nd), Macleod-Rosanna Guiders (25th), Murrumbeena-Carnegie Local Association (27th), 1st Ararat Brownie Pack (28th).

If your unit has just a few dollars to spare please send it to Britannia Park Maintenance Fund, c/o Miss A. Cockerell, 11 Ross Street, Northcote, 3070, to help us meet our budget for improvements in 1979-80.

—YOLAND SARGOOD.



Photography in this issue by courtesy  
H. Cathcart, W. Escott, V. Surrey,  
G. Thomopoulos and M. Thompson.

## EXTENSION EXTRACTS

### 3rd Wattle Park Guide Company

Due to the small number of girls at the Royal Victorian Institute for the Blind School, we are now very small in number, and are making arrangements for the guides to transfer to units near their own homes. The reason for the low number is firstly that there are less girls than boys at the Institute and, secondly, that if the children can cope with an ordinary school, they are being placed in one and have the help of a visiting teacher from the Institute.

During the year we have held our Annual Swimming Sports and our Annual Reunion. The guides attended the Scout Gang Show, and a Surprise Night to farewell our retiring Region Commissioner.

At one meeting one of the guides asked what an ambulance was like. We realised that if they had occasion to be taken in one the girls could be very frightened. This prompted us to make arrangements to visit the local ambulance station. The men on duty were very helpful and showed the guides everything there was in the ambulance. One guide was put on a stretcher and all were allowed to put on an air splint. They were shown the contents of their first-aid kits and the portable humidicrib.

We have had a company swimming night and made visits to other companies. On Thinking Day we attended the Division Ceremony at Wattle Park when the guides dressed as guides of El Salvador.

During the year two guides gained the Accident Prevention Badge, two the Homemaker and one the Hostess.

Recently we have been able to obtain a "Silva" Braille Compass which enables the guides to set a braille map. Also the Institute has produced the Guide Handbook for us in braille and in large print.

3rd Wattle Park Guide Company started in 1927. After nearly 52 years it is sad to see it close, but it is good that there are not the number of blind children there were years ago and that the remaining guides are being accepted so readily into the Guide companies in the areas where they live.

—S.L.

### HOST FARMS

The Host Farms Association Directory listing day tours, homestead, self-contained accommodation, caravan and camping sites is available. Write to The Secretary, 8 Kalang Road, Camberwell, 3124, for details.

# DOWN IN THE ARCHIVES

Recently I came across an article by the Founder on "How the Scout's Badge Originated" which first appeared in the American publication "Boys' Life" in July 1924. As it gave a good deal of information that is not generally available nowadays, I am quoting several paragraphs from it.

"Years ago, soon after the Boy Scouts were first started in America, certain critics accused the Movement as being a military one. Whenever anything new is started there are bound to be people who get up on their hind legs to find fault with it, before they know what it is all about.

In this case they said that the Scout Movement was designed to teach the boys to be soldiers, and they quoted as a proof that the crest of the Movement was, as they described it, **a spear head, the emblem of battle and bloodshed.** I was asked by cable what I had to say about it. I telegraphed back: 'The crest is a lily, the emblem of peace and purity'. I did not say in my cable that this was the cause of its being adopted as the Scouts' Badge, because it wasn't; at least, not altogether, since, as a matter of fact, it had been chosen also for another reason.

"The history of the fleur-de-lis (i.e., the lily flower) as a badge, goes back many hundreds if not thousands of years. In ancient India it was used as a symbol meaning life and resurrection, while in Egypt it was the attribute of the God Horus, about two thousand years before Christ. But it wasn't for that reason either that the Scouts took it. In the Middle Ages, Charles, King of Naples, being a Frenchman, had the fleur-de-lis as his crest. It was in his reign that Flavio Gioja, the navigator, made the mariner's compass into a practical and reliable instrument. His compass card had the initial letters of North, South, East and West upon it. In Italian the North was 'Tramontano'. So he put a capital T to mark the North point, but in compliment to the King he made a combination of the letter T with the King's fleur-de-lis crest. From that time the North point has been universally shown on the maps, charts and compass cards by that sign.'

B.-P. went on to tell how when he was training his soldiers in the basic elements of scouting — map reading, finding their way by the stars, swimming rivers with their horses and cooking their food, etc., he obtained permission from the War Office to give each man who qualified a small badge to wear.

His article continued:

"So in selecting a suitable badge I hit on the fleur-de-lis, or North point of the compass, since, like the compass, these scouts could show the right direction for going over a strange country.

"The Minister for War was so satisfied with the result of the Scout training that he suggested that the men who qualified as scouts, should be paid ten cents a day extra pay. But I told him he could spare the nation's purse and that ten cents a year would suffice, namely the cost of a Badge for the man to wear. This was all that was necessary. The men preferred a distinguishing Badge to extra pay. Thus the training and the distinguishing Badge of the fleur-de-lis came to be adopted officially for trained Scouts in all branches of our Army.

"When the Boy Scouts started a few years later I used the same Badge for them, for just as soldier Scouts through developing a sense of duty and manliness were able to be valuable helpers to the main body of their Army, so the Boy Scouts through similar training could give equally valuable service to their fellow-countrymen.

"Thus, in forming the Boy Scouts I adopted steps from all directions. The Scout training and the fleur-de-lis I got from my soldier Scouts; the dress, facings and motto I took from the South African Constabulary; the Badges of Proficiency I adopted from the Royal Navy; the Woodcraft signs and signals were the usual ones employed by backwoods-men; some of the Scout games were adopted from Thompson-Seton's books, "Two Little Savages" and "Birchbark Roll". The Scout Law from the code of the knights of the Middle Ages; and many of the ideas and activities from the Red Indians and the Zulus and so on.

"The actual meaning to be read from the fleur-de-lis badge is that it points in the right direction (and upward) turning neither to the right nor left, since these lead backward again. The stars on the two side arms may also be read to mean that the way is blocked and wrong, though they actually stand for the two eyes of the Wolf Cub having been opened before he became a Scout, when he gained his First Class Badge of Two Stars. Furthermore, the three points of the fleur-de-lis remind the Scout of the three points of the Scouts' Promise."

MARY LAMBE.

MATILDA

# TRAINING CALENDAR

Commissioners and unit leaders with the necessary experience are welcome to apply for ANY training. Applications should be sent prior to the closing date and be accompanied by the training fee and a stamped, self-addressed envelope. Training fee is \$3.00 unless otherwise stated. Please note, acceptance cards are not sent out until the closing date.

## STAGE 1 TRAINING

**Headquarters:** Wednesdays, 3rd, 10th, 17th, 24th October and 31st October, at **Studley Park, Kew**. Times 10.00 a.m. to 3.00 p.m. Applications to Training Department, Guide Headquarters, by **17th September**.

**Kilsyth:** Weekends 13th-14th October and 10th-11th November, times 10.00 a.m. to 4.00 p.m. Applications to Mrs R. Anderson, 17 Oliver Street, Ringwood, 3134, by **24th September**.

**Lakes Entrance:** Weekends 6th-7th October and 3rd-4th November, times 10.00 a.m. to 4.00 p.m. Applications to Mrs M. Frawley, P.O. Box 641, Sale, 3850, by **20th September**.

**Myrtleford:** Weekends 29th-30th September and 20th-21st October, times 10.00 a.m. to 4.00 p.m. Applications to Miss H. Smith, 21 Cusack Street, Wangaratta, by **7th September**.

**Somerville:** Weekends 15th-16th September and 27th-28th October, times 10.00 a.m. to 4.00 p.m. Applications to Mrs W. Rae, "Craig Arran", 285 Hastings Road, Somerville, 3912, by **28th August**.

**Willaura:** Weekends 13th-14th October and 10th-11th November, times 10.00 a.m. to 4.00 p.m. Applications to Mrs G. Swainston, 13 Wright Street, Skipton, 3361, by **20th September**.

**Creswick:** Weekends 22nd-23rd September and 20th-21st October, times 10.00 a.m. to 4.00 p.m. Applications to Mrs G. Platt, 2 Beresford Crescent, Darley via Bacchus Marsh, 3340, by **1st September**.

## Stage 2 Programming and Activities for WARRANTED Leaders

**Chadstone:** Wednesday, 10th, 17th, 24th October, times 7.30 p.m. to 10.00 p.m. plus weekend 27th-28th October, times, 10.00 a.m. to 9.00 p.m. Saturday and 10.00 a.m. to 4.00 p.m. Sunday. Applications to Mrs P. Miller, 28 Olive Street, Mt. Waverley, 3149, by **20th September**.

**Tatura:** Tuesday, 11th, 18th, 25th September, 2nd October, times 10.00 a.m. to 4.00 p.m. Applications to Mrs J. Murphy, 73 Balaclava Road, Shepparton, 3630, by **25th August**. (Please note change of location from Nathalia.)

**Ringwood:** Weekends 15th-16th September and 6th-7th October, times 10.00 a.m. to 4.00 p.m. Applications to Mrs C. McCall, 79 Wantirna Road, Ringwood, 3134, by **28th August**.

## Ranger Lightweight Camping

**Scoresby:** 6th-7th October, and 3rd-4th November at **Donvale**, and 24th-25th November at **Tapestry**. Times 10.00 a.m. Saturday to 4.00 p.m. Sunday. Note: Cost of weekends to be advised. Applications and \$4.50 fee to the Training Department, 20 Russell Street, Melbourne, by **20th September**.

## Accent on Leadership — Special Subjects for Guiders who have completed Stage 2 training

**Deer Park:** Weekends 4th-5th August and 15th-16th September, times 10.00 a.m. to 4.00 p.m. Applications to Mrs R. Bell, 10 Debenham Drive, St. Albans, 3021, by **19th July**.

**Headquarters:** Wednesday 22nd August, 12th, 19th, 26th September, 3rd October, times 10.00 a.m. to 3.00 p.m. Applications to Training Department, Guide Headquarters, by **1st August**.

**Horsham:** Weekends 4th-5th August and 15th-16th September, times 10.00 a.m. to 4.00 p.m. Applications to Mrs J. Creek, RMB 358, Nhill, 3418, by **19th July**.

**Red Cliffs:** Weekend 6th-7th October and **Mildura**, 17th-18th November, times 10.00 a.m. to 4.00 p.m. Applications to Miss E. Cameron, P.O. Box 107, Wentworth, 2648, by **20th September**.

**Shepparton South:** Weekends 4th-5th August and 15th-16th September, times 10.00 a.m. to 4.00 p.m. Applications to Mrs J. Murphy, 73 Balaclava Road, Shepparton, 3630, by **19th July**.

## Campcraft Training

**Chadstone:** Weekend 22nd-23rd September, times 10.00 a.m. to 9.00 p.m. Saturday and 9.00 a.m. to 4.00 p.m. Sunday plus weekends 3rd-4th and 17th-18th November at **Donvale** and 8th-9th December at **Britannia Park**. Times for these three weekends 10.00 a.m. Saturday to 4.00 p.m. Sunday. Note: Cost of weekends to be advised. Applications and \$6.00 to Training Department, Guide Headquarters, by **1st September**.

**Gippsland Region:** Weekend 22nd-23rd September, times 10.00 a.m. to 9.00 p.m. Saturday and 9.00 a.m. to 4.00 p.m. Sunday plus weekends 13th-14th and 27th-28th October and 24th-25th November, times 10.00 a.m. Saturday to 4.00 p.m. Sunday. Note: Cost of weekends to be advised. Applications and \$6.00 to Mrs M. Frawley, P.O. Box 641, Sale, 3850, by **1st September**.

## Pack Holiday Training

**Bennettswood:** Weekend 20th-21st October, times 10.00 a.m. to 9.00 p.m. Saturday and 9.00 a.m. to 4.00 p.m. Sunday. Applications and \$4.50 to Mrs F. Ludbrook, 5 Curnola Avenue, Doncaster, 3108, by **30th September**.

**Headquarters:** Wednesday 10th, 17th, 24th October, times 10.00 a.m. to 3.00 p.m. Applications and \$2.00 to Training Department, Guide Headquarters, by **20th September**.

**Katunga:** Weekend 29th-30th September, times 10.00 a.m. to 9.00 p.m. Saturday and 9.00 a.m. to 4.00 p.m. Sunday. Applications and \$4.50 to Mrs J. Murphy, 73 Balaclava Road, Shepparton, 3630, by **1st September**.

**Gippsland Region:** Weekend 22nd-23rd September. Further information available from Mrs M. Frawley, P.O. Box 641, Sale, 3850.

## Camp First Aid

**Headquarters:** Weekend 15th-16th September, times 9.00 a.m. to 4.00 p.m. Applications and \$2.00 to Training Department, Guide Headquarters, by **28th August**.

**Wangaratta:** Weekend 18th-19th August, times 9.00 a.m. to 4.00 p.m. Applications and \$2.00 to Miss H. Smith, 21 Cusack Street, Wangaratta, 3677, by **1st August**.

## Facts 'n' Fun for Local Association Members

**Headquarters:** 2nd October, times 10.00 a.m. to 3.00 p.m. Applications and 50 cents per Local Association member to Training Department, Guide Headquarters, by **1st September**.

## Campcraft on Site Conference

**Donvale:** Weekend 8th-9th September, times 10.00 a.m. to 5.00 p.m. Saturday and 10.00 a.m. to 4.00 p.m. Sunday. **For Camp Advisers and Guiders with Campers Licence.**

If coming by the day bring own lunch (a — drinks, morning tea, etc., provided, or b) camp overnight on site — fee to be advised. Note: For those attending by the day the fee will be \$2.00. Guiders in charge — Enid Bunning and Jessie Lamond.

Applications — indicating a or b to Training Secretary, Guide Headquarters, by **20th August**.

## Reactivate for Ranger Guide Leaders

**Weekend 29th-30th September at Headquarters,** times 9.30 a.m. to 9.00 p.m. Saturday, and 10.00 a.m. to 4.00 p.m. Sunday.

FOR YOU . . . Ranger Guide Leaders, the Training Department extends to you the invitation to attend a weekend of enrichment and mutual sharing.

This weekend is open to **all Ranger Guide leaders** regardless of unit, experience and age **WHO HAVE ALREADY ATTENDED STAGE 1 TRAINING.**

Applications, \$4.50 and a stamped self-addressed envelope should be sent to the Training Department, Guide Headquarters, by **7th September**.

## Commissioner Refresher Training Day

**Dandenong:** Saturday, 11th August, times 10.00 a.m. to 4.00 p.m. Applications and \$1.20 to Mrs K. Wilkie, 1 Treehill Road, Ferny Creek, by **20th July**.

## Bushcraft

**Yarra Junction:** Friday, 17th August, to Sunday, 19th August, times 7.00 p.m. Friday to 4.30 p.m. Sunday. Note: Syllabus of the Bushcraft Badge to be covered. A further two weekends to be arranged — dates to be discussed during this weekend. Fee: to be advised. Applications and a stamped self addressed envelope to be sent to the Training Department, Guide Headquarters, by **1st August**.

## Orienteering

**Geelong:** Saturday, 29th September, times 9.00 a.m. to 4.00 p.m. Saturday. Applications and \$1.20 to Mrs W. Podbury, 24 Lupton Street, Geelong West, 3226, by **7th September**.

## Parkland Pleasure

**City Parks:** Wednesday, 19th September, times 9.30 a.m. to 3.00 p.m. Applications and \$1.20 to Training Department, Guide Headquarters, by **1st September**.

## Pioneering

**Calivil:** Sunday, 30th September, times 9.00 a.m. to 4.00 p.m. Sunday. Applications and \$1.20 to Mrs B. Whelan, 8 Hope Street, Kangaroo Flat, 3555, by **2nd September**.

## Skills Day

**Beechworth:** Saturday, 25th August, times 9.00 a.m. to 4.00 p.m. Note: To include Camp cooking, pioneer cooking, fire lighting and gadgets. Applications and \$1.20 to Miss H. Smith, 21 Cusack Street, Wangaratta, 3677, by **4th August**.

**Beechworth:** Sunday, 26th August, times 9.00 a.m. to 4.00 p.m. Note: To include trailing, tracking, pioneering and orienteering. Applications and \$1.20 to Miss H. Smith, 21 Cusack Street, Wangaratta, 3677, by **4th August**.

CONGRATULATIONS to the recipients of the following:

## The Wattle Award

Mrs J. H. Rowland, Surrey Hills.

## Guider Long Service

(20 years): Mrs N. Flegg, Doncaster.

(10 years): Mrs E. H. Parker, Forest Hill; Mrs E. Clark, Maffra; Mrs G. Robertson, Mulgrave; Mrs M. Lucas, Lower Templestowe; Mrs J. Barrett, Aspendale; Mrs G. Millar, Mordialloc; Mrs N. H. Vale, Sale.

## Combined Long Service

(40 years): Miss F. Martin, East Melbourne.

(30 years): Mrs E. Foster, Merbein.



## Thanks Badge

Mrs E. S. Webster, Alexandra; Mr F. J. Madigan, Lancefield; Mr R. Green, Lancefield; Mr S. Green, Lancefield; Mr R. Williams, Lancefield; The Numurkah Leader.

## APPOINTMENTS AND WARRANTS

A warm welcome is extended to the following:

### Region Commissioner

Mrs H. C. Lee-Archer, South Metropolitan.

### Division Commissioner

Mrs A. Humphreys, Strzelecki.

### District Commissioners

Mrs L. Campbell-Smith, Cherrydene; Mrs R. W. Allen, Narre Warren; Mrs B. R. Sullivan, Puckapunyal; Mrs G. B. Stimson, Skipton; Mrs B. A. Woodland, Jeparit; Mrs P. I. Browne, Shepparton South; Mrs V. W. Kayler-Thomson, Sunshine West; Mrs T. J. Greene, Beaumaris; Mrs P. J. Cavanough, Lara; Mrs S. A. Laplanche, Scoresby; Mrs A. S. Bonsack, Great Western.

### Guide Guiders

Miss J. A. Kemp, 2nd Ferntree Gully; Miss G. Chanter, 1st Dingley; Mrs A. Norling, 1st Narre Warren North; Mrs J. Thornton, 2nd Kilsyth; Mrs M. Cockburn, 2nd Emerald; Miss L. M. Hudson, 1st Niddrie; Mrs M. Pritchard, 5th Brighton; Mrs B. Nievaart, 1st Woori Yallock; Miss F. Jeffrey, 1st Charlton; Mrs J. Thom, 7th Victorian Lones; Mrs J. Harsley, 1st Beaumaris.

### Assistant Guide Guiders

Mrs I. A. Royle, 1st Cheltenham; Miss A. J. Hillier, 2nd Ferntree Gully; Mrs J. P. Brown, 2nd Mildura; Mrs M. Healy, 2nd Mildura; Mrs B. J. Jones, 2nd Syndal North; Mrs L. Van Gulik, 2nd Morwell; Miss R. E. Harrap, 1st Paynesville; Mrs D. McLaurin, 1st Woori Yallock; Mrs P. R. Garton, 2nd Dandenong North.

## Brownie Guiders

Mrs D. Barrett, 1st Patterson Lakes; Mrs G. A. Quick, 2nd Dareton; Miss G. Weldon, 4th Forest Hill; Mrs C. Heesom, 1st Bairnsdale; Mrs N. Hicklin, 1st Flinders; Mrs J. Anderson, 3rd Eaglehawk; Mrs R. P. Desmond, 1st Camberwell; Mrs N. Oddey, 2nd Newcomb; Mrs A. M. Capraro, 2nd Epping; Mrs B. P. Healy, 4th Heyfield; Miss G. Bunstan, 2nd Underbool; Mrs L. M. Lancaster, 1st Ouyen; Mrs W. Willoughby, 1st Caulfield; Miss K. Hinkley, 1st Cobden; Mrs M. Magri, 1st Kilsyth; Mrs B. L. Jewell, 1st Kaniva; Mrs K. Steer, 4th Morwell; Mrs S. Peachey, 1st Morwell; Mrs B. Phillips, 1st Bannockburn; Mrs H. Earl, 3rd Warragul; Miss L. M. Gillett, 2nd Northcote; Mrs J. P. Merrick, 1st Mt. Martha; Mrs B. Taylor, 2nd Boronia; Miss A. J. Thorne, 2nd Macleod; Miss L. F. Elliott, 2nd Rosanna; Mrs B. A. Kreitling, 2nd St. Albans; Mrs J. R. Stuchbree, 3rd St. Albans; Mrs Le Marquand, 1st Portarlinton; Mrs S. D. Phillips, 3rd Horsham.

## Assistant Brownie Guiders

Miss K. S. Dalgarno, 1st Frankston; Mrs B. J. Spicer, 1st Ringwood; Mrs W. J. Goldsmith, 1st Dingley; Mrs R. J. McPhail, 2nd Dingley; Mrs A. Hughes, 2nd Warrandyte; Mrs R. Simons, 4th Coburg; Miss J. M. McLean, 1st Broadford; Mrs B. Osborne, 2nd Newcomb; Mrs D. W. Kennedy, 4th Heyfield; Mrs G. Nielsen, 1st Ouyen; Mrs R. W. Gardner, 1st Mildura; Mrs J. T. Wheller, 3rd South Shepparton; Mrs E. T. Hancox, 4th Shepparton; Miss J. Davies, 1st Clayton; Mrs B. W. Howes, 1st Beaconsfield; Mrs N. W. Nash, 1st Kaniva; Miss M. R. Cruis, 4th Morwell; Miss G. Heppleston, 3rd Morwell; Mrs L. W. Pedersen, 3rd Mildura; Mrs J. Stitt, 3rd West Waverley; Mrs R. Cadel, 1st Greenhills; Mrs J. McPhee, 3rd Glen Waverley; Mrs K. J. Ellis, 2nd Scoresby; Mrs R. Magierowski, 3rd St. Albans; Mrs T. J. Allen, 4th Dandenong North; Miss S. Thomas, 3rd Hoppers Crossing; Mrs E. Reid, 1st South Dandenong.

## REGISTRATIONS

Cherrydene Local Association, 2nd Surrey Hills Company, 4th Sunbury Pack, Euroa Ranger Guides, Glenroy Ranger Guides, Pascoe Vale South Ranger Guides.

## RESIGNATIONS AND RETIREMENTS

We acknowledge with gratitude the services given by the following, whose Warrants have been returned:

### Region Commissioner

Mrs C. Winchester, South Metropolitan.

### Division Commissioners

Mrs R. S. Stuart, Blue Dandenongs; Mrs H. C. Lee-Archer, Port Phillip.

### District Commissioners

Mrs J. W. Hann, Scoresby; Mrs P. B. Costiff, Skipton; Mrs G. T. Cassano, Gembrook; Mrs J. D. Biddle, Apollo Bay; Mrs V. H. Oakes, Chadstone; Mrs C. W. Campagnoli, Sunshine West.

## Ranger Guiders

Mrs K. W. Reeves, Yarraville Rangers; Mrs E. Waugh, Maffra Rangers.

## Assistant Ranger Guider

Mrs D. A. Hunt, Maffra Rangers.

## Guide Guiders

Mrs T. Strauch, 1st White Hills; Mrs B. McDonald, 2nd Charlton; Mrs F. Webster, 2nd Bendigo; Mrs E. J. Arnold, 1st Edenhope; Mrs G. D. Elliott, 1st Avoca; Mrs R. McConchie, 1st Dartmouth.

## Assistant Guide Guiders

Miss S. B. McAdam, 2nd Balwyn; Miss G. Chanter, 1st Dingley; Mrs A. Norling, 1st Narre Warren North; Mrs B. L. Jewell, 1st Kaniva; Mrs R. W. Schneider, 1st Cobden; Mrs R. F. Archibald, 1st Berwick; Miss L. M. Hudson, 1st Niddrie; Miss F. Jeffery, 1st Carlton; Mrs J. Thom, 7th Victorian Lones.

## Brownie Guiders

Mrs D. E. O'Brien, 2nd Echuca; Mrs D. Rothwell, 2nd Underbool; Mrs L. Hogg, 4th Mildura; Mrs R. Lindsay, 1st Montrose; Mrs J. R. Doll, 3rd Yarraville; Mrs C. G. Blanch, 3rd Springvale North; Mrs S. Peachey, 1st Maryvale; Mrs N. W. Nash, 1st Kaniva; Mrs S. I. Hutchins, 1st Dunkeld; Mrs G. J. Sebo, 3rd Cheltenham; Mrs A. Burrows, 1st Airport West; Mrs R. Stitling, 1st Yinnar; Mrs N. Uytshaag, 3rd Horsham; Mrs A. Phillips, 1st Parkmore; Mrs G. McAliee, 1st Dartmouth; Mrs J. R. Stuchbree, 2nd St. Albans.

## Assistant Brownie Guiders

Miss J. Reid, 2nd Altona North; Mrs B. H. Knight, 5th Colac; Mrs M. Goodwin, 2nd Montrose; Mrs R. P. Desmond, 1st Camberwell; Miss G. Bunstan, 2nd Underbool; Mrs K. Steer, 2nd Maryvale; Miss M. R. Cruis, 3rd Maryvale; Mrs J. O'Brien, 2nd Charlton; Mrs J. T. Wood, 1st Casterton; Mrs H. J. Hodgson, 1st Dunkeld; Mrs R. O. Sanders, 2nd Glen Waverley; Mrs S. D. Phillips, 3rd Horsham; Mrs R. Magierowski, 2nd St. Albans.

## FREE LECTURE ON GEMSTONES

Mothers of Brownies and Guides are invited to this interesting lecture and viewing of gemstones. Held at our showrooms on Mondays, Tuesdays, Wednesdays and Thursdays, starting at 10.00 a.m. and lasting for about two hours, the sessions are limited to between 15 and 25 people.

Telephone 602 2226 for further information and to book a morning for your group.

**RINGCRAFT DIAMOND SALON**, 5th Floor, Askew House, 372 Lonsdale Street, Melbourne.

Except for articles where copyright restrictions are indicated, material in "Matilda" may be reprinted in Guide and Scout magazines without prior permission. A credit line would, however, be appreciated.

# GUIDE SHOP NEWS.



## CAMPING GEAR



When you think Lightweight Camping, think Guide Shop! Come in to see our large range of gear including —

Sausage Bags (navy blue) .. .. .	\$15.95
	and \$17.95
Camp cutlery .. .. .	\$1.90
Camping knife .. .. .	\$4.95
Can opener .. .. .	\$1.25
Collapsible tumbler .. .. .	\$1.75
Collapsible water carrier .. .. .	\$4.95
Folding scissors .. .. .	\$1.10
Nylon overpants .. .. .	\$7.95
Sewing kit .. .. .	\$1.25
Sheath knives .. .. .	\$3.50
	and \$4.25
Sportsman's soap .. .. .	\$1.75
Squeeze tubes .. .. .	\$2.50
Wash well (travelling laundry kit) .. .. .	\$3.95
Waterproof matches .. .. .	.65

## IYC

Is your unit supporting IYC?

### BADGE

We still have ample stock of the IYC badge to be earned by the girls.



### STICKER

Car stickers and plastic buttons to be worn out of uniform or on camp hats, etc., are each available for 50 cents.



## SHOES

Step out in style and comfort in our special shoes. Two styles. All sizes — 5B to 9½B. Priced well under other shops — \$24.85.

## ACTIVITY SHEETS

Brownies have fun preparing and playing with our new Activity Sheets (1 and 2) and learning at the same time — \$1.00 each.

No. 1 — Pre-Promise.  
No. 2 — Footpath.  
Roadway and Highway will be available soon.



## PRICE ALTERATIONS

To assist you with mail orders —

### Guide Uniform

Blouse .. .. .	\$9.45
Skirt .. .. .	\$10.75
Jumper —	
Sizes 28-34 .. .. .	\$16.95
Jumper —	
Sizes 36-42 .. .. .	\$19.95
Tie .. .. .	\$2.50
Belt .. .. .	\$4.25
Beret .. .. .	\$3.00
Patrol Emblem .. .. .	.60
Pantees .. .. .	\$1.85
Socks — knee .. .. .	\$2.30
Socks — ankle .. .. .	\$2.20

### Brownie Uniform

Frock .. .. .	\$15.95
Cardigan .. .. .	\$13.25
Beret with	
badge .. .. .	\$3.25
Belt .. .. .	\$4.25
Pouch .. .. .	\$3.25
Tie .. .. .	\$1.65
Pantees .. .. .	\$1.85
Socks — knee	
— Size 9-12,	
13-3 .. .. .	\$2.15
Socks — ankle	
— Size 9-12,	
13-3 .. .. .	\$1.95

\* \* \*

Material, Brownie dress, Guide skirt, Polyester Viscose, 42" wide, per metre	\$4.40
Skivvies, Brownie and Guide, all sizes ..	\$6.75