

COMMUNICATING

APRIL

1991

FROM THE STATE COMMISSIONER

Dear Members and Friends

In February *Communicating*, I wrote - I have this wonderful feeling 1991 is going to be a great year - and, so far my feelings have been right.

So many of you have told me of your efforts and successes in achieving "Our Dream". Please believe me - your special efforts are truly appreciated.

Just imagine, if every member concentrated on "Membership Magic", we could achieve more than "Our Dream" target, wouldn't that be wonderful for Girl Guiding - for US!

I find it wonderful that in the midst of all the community doom and gloom I keep finding so many happy bright positive attitudes within guiding.

I have found this attitude with the advisers and among many commissioners and best of all, with leaders that understand their girls needs and situations. They believe as I do, that guiding is a constructive activity that NEED NOT be expensive to be worthwhile and fun. When all is analysed, guiding is great value for money.

Following are some ideas I have been told about to cope with the times:

* "We have gone back to weekly subs. The girls enjoy planning how to collect it and the parents appreciate the smaller amounts."

"For our pack camp we planned well ahead, then over the months we:

- . collected appropriate tinned food
- . had bake day and stored in the freezer
- . collected camp fees in instalments
- . planned transport so we needed only five cars each way

* "To give our families time to budget for uniform etc, we give each new parent on their daughter's second night, an honest account of cost and time line for each expense with the option of new uniform (or recycled when possible)."

* "Our unit is really putting into practice our Promise and Law. In particular laws 7, 8, 9 and 10."

You may have some ideas I can pass on. Please send them in and we can all share more wonderful, positive attitudes.

Dorothy Woolley
State Commissioner

NEWS FROM 20 RUSSELL STREET

Fundraising for Headquarters Carpet

Have you visited headquarters lately? Did you notice how worn the carpet is?

We don't want to use the girl's money to re-carpet the building, so, during the coming months we will be organising several fundraising activities for the carpet fund. To get us started, we have organised a chocolate drive and a wine tasting:

Chocolate Bars for Sale

We have 50 cartons of Worlds Finest Chocolate Bars (36 bars per carton). They sell at \$72.00 per box (ie, \$2.00 per bar).

If your district is interested in purchasing a box to sell at their leisure, please contact Joan or Betty at headquarters.

Wine Tasting - Friday, 3 May - 6.00 pm - 8.00 pm

Leaders and friends are invited to attend a Wine Tasting at headquarters on Friday, 3 May.

The cost will be \$16.00 per person and numbers are limited to 50 people. If you would like to attend, ring Joan or Betty to reserve a seat.

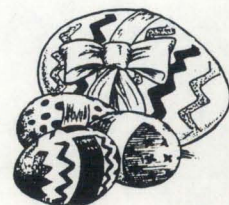
What a great way to start to Guide Month.

* * * * *

*My life shall touch a dozen lives
Before this day is done
Leave countless marks for good or ill
Ere sets the evening sun.*

*So this the wish I always wish
The prayer I ever pray
"Lord, may my life help other lives
It touches by the way"*

"My Influence"
G. Knight



BROWNIE SECTION

Unfortunately, the number (03) 793 5333, you ring to check if the telephone is working on the adopt-a-phone guidelines has been cancelled. To check if the phone is working, listen for dial tone and look for any further damage. Telecom are very pleased at the way the brownie section are looking after their phone boxes. Well done! Keep it up!

"Brownie Guide Program Ideas for Leaders", has been reprinted and is now available in the guide shop for \$9.00.

The 17 brownie guide leaders from Victoria who went to ABLE have received the Resource Booklet. We hope to have this available for sale in the shop very soon, meanwhile, ask one of the contingent members to show you this book.

Arrangements have been finalised for our BLUE (Brownie Guide Leaders Unlimited Experience) weekend. It will be held at the Salvation Army Conference Centre, The Basin, from 11-13 October. Cost will be \$55 for the weekend and \$20.00 for Saturday only. There are 150 places available for residential and 100 places available for day visitors. Application forms will be included in the May edition of Communicating. Mark the date and be ready to apply.

Keep your eyes on Koala korner for more ways to help out the Koala Foundation in 1991.



Debbie McLaren
Brownie Adviser

COMMISSIONERS CONFERENCE 1991 - C.A.N.D.L.E."Motivate & Enthuse"

A conference for ALL district leaders and commissioners. Book the date in your diary now: 28-30 June.

A stimulating program which includes workshops and discussion groups. You have a question that hasn't been answered? Then bring it to the conference. Question and answer time will take place on the Friday night.

For application form, see March edition of COMMUNICATING. Bookings must be received no later than 17 May.

DEVELOPMENT

Just because I'll be away for the month of May, don't think Development has stopped!

If you have any queries please phone Shirley Reeves on (03) 878 0865. 8.00am is a good time to catch her, or Pat Webb on (03) 725 8369.

Country Regions - don't forget your Country Connection is Jenny Mitchell. Jenny can be contacted on (055) 88 1203.

Public Relations - the support group adviser and development, are working as a team in 1991 and are visiting Hume, Western Plains and Barree - hope we can meet up with you when we come.

Do you "follow up" when you have a bring a friend night. We have distributed to region commissioners a yellow leaflet you may find useful for this purpose. Blue for guides, coming at next region meeting. The 1991 New Leaders Luncheon is being held in August. Would district leaders please let me know the names and addresses of leaders who have started since September 1990.

Do contact me if you would like any help with school promotions. Have you seen our great video which has been professionally made - just for this very purpose. We would love to hire it to you if you are thinking of telling school girls about guides and brownies. Come and see what else PR and Development have to help you.

The next Public Speaking Course is on Saturday, 26 October and Saturday, 16 November. The cost is \$10.00, which includes lunch. Apply in writing to the Development Adviser c/- 20 Russell Street. **CHEQUES SHOULD BE MADE PAYABLE TO "GIRL GUIDES ASSOCIATION OF VICTORIA"**.

Come and join in this relaxed, non-threatening course.

Wouldn't it be wonderful to have four leaders in each unit. Impossible you say - not at all. Four friends can have a wonderful time exchanging ideas and having fun.

Elaine Wallbridge
Development Adviser



RESOURCE DEVELOPMENT

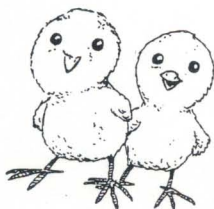
The Resource Development Committee of the Association, has been in operation since late 1989. The purpose of this article is to provide information on what the committee aims to do and how this is being achieved.

The committee's broad aims are friendraising and fundraising. We believe that the Movement has a great deal to offer the community, and deserves to be better known and more widely supported. Promoting guiding, updating equipment, upgrading campsites, boosting leader training, all need more funds than those we have available from our usual sources. We need to widen our support base to increase the financial resources available to us.

Guiding has many friends and potential friends and supporters in the community, and we are reaching out to them in a number of ways:

- "News from Guiding" is a quarterly newsletter which goes to about 3,500 past members and current supporters of the Association. It aims to keep them informed about current activities and achievements.
- Recipients of "News from Guiding" are invited to participate in the Association's annual gift program in April each year.
- A cocktail party is held at the end of each year to recognise and thank the people in the community who are friends and supporters of guiding.
- Sponsorship from the corporate sector is sought for Association initiatives.
- Charitable trusts and foundations are approached seeking funding for the development of guiding.
- Special functions are planned to interest prominent and influential people, such as a forthcoming cocktail party for "Young Women in the Public Eye".
- It is planned to make available during 1991 information on how to remember the Girl Guides Association in your Will.

Helen Cameron, Manager - Support & Services, is the staff person responsible for Resource Development. She would be happy to talk to anyone who would like to know more about friendraising and fundraising for our Association.

INTERNATIONAL

Well, the war is over (we hope) and the invitations are flowing in fast. The International Committee and I, have set aside two selection days for 1991 that will hopefully suit any other incoming events, so, if you think that you would like to go overseas with guiding, please reserve these dates:

Saturday, 15 June 1991
Saturday, 9 November 1991

Camps coming up are:

WS '92 - England - Ardingly, West Sussex.
24 July-20 August 1992. Including home hospitality and Our Chalet.

Participants: Six ranger guides and two leaders.
Estimated Cost: \$4,400
Closing Date: 2 November 1991
Selection Date: 9 November 1991

Protecting Our World - Sangam, India.
2-23 December 1991. Includes Explore India Tour.

Participants: Two Adult Members
Estimated Cost: \$3,000
Closing Date: 1 June 1991
Selection Date: 15 June 1991

Management - Sangam, India.
6-31 January 1992. Includes Explore India Tour.

Participants: Two administrators.
Estimated Cost: \$3,000
Closing date: 1 June 1991
Selection date: 15 June 1991

United in Friendship - Sangam, India.
17 February-13 March 1992. Includes Explore India Tour.

Participants: Two members over 18 years.
Estimated Cost: \$3,100
Closing date: 1 June 1991
Selection Date: 15 June 1991

Your region international representative has all the details. If one of these events takes your fancy, please contact her. (See March edition of Communicating for her name/address.....).

I do hope to see you at a selection soon.

Merran Crowley
International Adviser



PUBLIC RELATIONS

Easter and school holidays will make April a very short month for guiding activities. Do take time to plan something that will make an impact on your community during May, which is GUIDE MONTH.

The aim is public awareness. It needn't cost anything or take up any extra time.



Jennie Bowles
Public Relations Adviser

KOALA KORNER

The Australian Koala Foundation have written, expressing gratitude for the way in which brownie guides around Australia helped in 1990 with the mammoth task of collecting, pinning, stamping and packaging over 300,000 gumleaf pins which were sold to raise funds during "Save the Koala Week" in October. As well, other koala related fundraising activities have been held and to date \$37,000 has been raised. What a wonderful effort!

The 1991 Gumleaf Campaign is already being planned and our assistance is being sought. "Save the Koala Day" has been set for 26 October. Each month we will publish ways you can help. Here is a start:

1. Collect gumleaves, especially blue gum, (Eucalyptus Territacornis) and send to the Australian Koala Foundation, GPO Box 9899, Brisbane 4001.
2. Prepare your own gumleaves to sell. The Foundation will send instructions and pins.
3. Hold a public reading of koala stories, poems and rhymes.

More ideas next month.

FROM THE TRAINING DEPARTMENT

District Leader and Commissioner Leadership 2 Training

The training planned for Halls Gap on 28-30 June has been cancelled. The training will now be held at:

Stawell - 31 May-2 June. 7.00pm - 9.00pm Friday.
9.00am-9.00pm Saturday and 9.00am-4.00pm Sunday.

Cost of evening meal will be advised.

Apply with \$20 and sae to the Training Department at 20 Russell Street, Melbourne Vic 3000 by no later than 30 April.

CANCER MARATHON '91

Have you heard of Cancer Marathon '91? This is a 1,000 km walk around Victoria by members of the Girl Guides Association, to take place from 16 November - 7 December.

We have set ourselves a target to raise \$60,000, and we are looking for YOUR support! How can you support us? Easily. First, by taking up the following challenge that we are giving to EVERY pack, unit, district, division and region in Victoria.

We want YOU to hold your own mini-marathon. Have girls gain their own sponsors and help us reach our target. You may wish to include your whole region, or you may prefer to do it as a pack. "Keeping Fit challenge" is one way you can use it. You may like to invite one of the team members to give you some tips on precautions to take - stretching exercises, or any other aspect to do with walking. We will come in to help you!

For further information phone Dianne Walker on (03) 435 5719.

GIRL GUIDES SUPPORT GROUPS

To assist new support group members several memos are now available. The titles are:

1. Money Matters
2. Suggested Agenda for the Monthly Meeting of a Girl Guides Support Group.
3. Meeting Procedure Guidelines for Girl Guides Support Groups.
4. Sample Statement of Monthly Income and Expenditure for Support Groups.

These memos can be picked up at headquarters, or by writing to or phoning Mrs Maureen Stanton, 12 Suva Street, Mulgrave Vic 3170 Ph (03) 546 4543.

Frances Ho
Girl Guides Support Group Adviser

WALK AGAINST WANT

Unit or individuals may like to take on the challenge of participating in Community Aid Abroad's 25th annual Walk Against Want on 14 April.

It is a lot of fun, and you also raise money for Community Aid Abroad's vital work in developing countries.

Participants can walk or run 7, 14 or 21 km, wheelchair, cycle 27 or 40 km, or do the Fast Against Famine. The Melbourne Walk Against Want starts at Fawkner Park, South Yarra and finishes there with a festival of food, fun and entertainment.

There are also 17 suburban and regional walks on the same day.

Phone Community Aid Abroad on (03) 419 7111 for more information and/or to enter the Walk Against Want.

OUTDOOR ACTIVITIESAdventurous Activity Forms

For Water Activities, please send direct to, Dale Davies, 7 Brentwood Crescent, Frankston 3199.

All other forms should be sent to the section leader on your region committee at least six weeks before the activity.

Do you have a girl with diabetes in your unit? Are you concerned about taking her to camp? If you are unsure about the management of this condition or any other medical problem, please take an extra member of staff (mother, older sister, relative etc) with you, so that you and all your girls can enjoy a happy relaxed camp.

Camp Skills/Camp Cooking Badges

Leaders, if there is no assessor available to assess a guide in your own region, after consulting the guide section leader on your region committee, an assessment may be arranged in another region. All papers to be forwarded through your region guide section leader. Guides may travel to the assessment in camp uniform.

Camp Rumbug - 7-10 June

Camp Rumbug will be held in the Foster Hills near Wilson's Promontory. Come to ADVENTURE ISLAND. Abseiling, canoeing, bike riding, archery, eight different ropes courses and more. Come with your patrol! Come with a friend! Come on your own!

For more information ring Mrs Pauline Warren on (051) 34 2280.

Sunship Earth

By popular demand, a second adventure camp for guides and brownie guides!

Sunship Earth, Britannia Park, Yarra Junction.
21-25 September 1991 (school holidays).

Cost \$90.00 - includes bus fare from Melbourne to camp and return.

SUNSHIP EARTH (formally Camp Eden).

An indoor camp with exciting outdoor program for brownie guides and guides who will be in grades 5 and 6 at the date of camp.

Girls apply for this five day adventure by writing personally for a passport application form, to the Outdoor Activities Department, at 20 Russell Street.

Please enclose an sae for return of form. Places are limited so early application is recommended.

Due to past demand for places at these camps, applications cannot be accepted from girls who have already attended a CAMP EDEN ADVENTURE.

Closing date for receipt of completed form and camp fee is 15 June 1991.

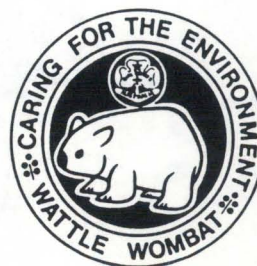
Alma Brand
Outdoor Activities Adviser

WORLD ENVIRONMENT DAY 1991Youth Award Scheme

The Commonwealth Minister for Arts, Sport, the Environment, Tourism and Territories, wants to know about successful environmental activities undertaken by young Australians.

On World Environment Day, 5 June each year, the Minister makes up to five Awards with grants of \$600 to young people who have contributed to a better environment either as individuals or groups.

Closing date: Friday, 26 April 1991. Contact Pat at reception for further details and application forms.



CAMPSITE BOOKINGS

If you would like to book for a pack holiday or guide camp, there are a few vacancies available.

These dates are as at 8 March 1991:

BRITANNIA PARKGuide House

26-28 April (school holidays)
5-7 July
19-21 July (school holidays)
26-28 July
13-15 December

Brownie Cottage

26-28 April (school holidays)
5-7 July
19-21 July (school holidays)
1-3 November (Melb. Cup Weekend)
6-8 December
13-15 December

Broadhurst Lodge

27-29 September (school holidays)
13-15 December

Thankyou Chalet and sites are still available for booking throughout the year.

SHOREHAM

Aulua 12-14 July (school holidays)

Warrawong 12-14 July (school holidays)

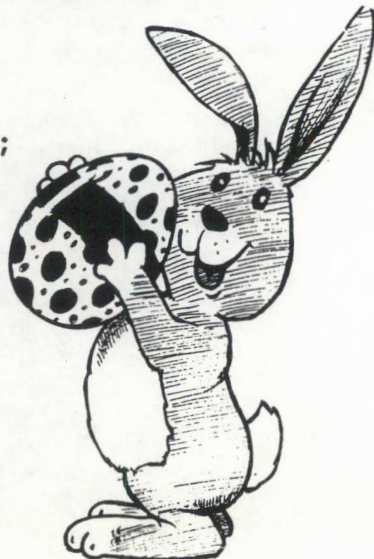
Outdoor sites are available throughout the year.

NEWS FROM ILUKA

There will be a games night for fundraising, on Saturday, 31 August at Iluka. Please keep this date free and watch this space for further information.

Working bees for 1991:

6-7 April;
31 August-1 September;
2-4 November

"HEALTH ISSUES SELF ISSUES" KITS

All guide, ranger guide and ranger units will soon be receiving a bright yellow "Health Issues Self Issues" kit. These have been produced for the Girl Guides Association with the assistance of funding from the Victorian Government's Office of Youth Affairs.

Each kit contains a number of pamphlets on issues which are important to the health and general well being of girls - such as nutrition, smoking, stress, depression, skin cancer, AIDS, sexual assault - plus some suggestions for how to use the kit, and addresses to contact for more information.

The kits are designed to hang on a wall or noticeboard of unit meeting places. (Maybe inside a storage cupboard door if a unit does not have its own hall). If two or more units have the same meeting place, they will only receive one kit.

Units are encouraged to add to their kits, information they think should be included, such as pamphlets on other health issues, or local information.

The kits can be used as a source of information for research projects. We hope they will encourage girls and leaders to talk about personal issues which may be concerning them, and to find out where to go if expert help is needed.

There are spare kits available if any unit needs one - contact Helen Cameron at headquarters. Any comments on the kit would be very welcome.

Helen Cameron for the
"Health Issues Self Issues" Committee.

CRAFT COURSES AT BRITANNIA PARK

Due to popular demand, courses will be held again during 1991.

If you would like more information regarding dates etc, please ring Judy Poulson at Britannia Park on (059) 67 1331.

FOR YOUR NOTICEBOARD

Brownie Section

Are you collecting gumleaves for the Save the Koala Foundation? Your leader can give you more details.

Brownies/Guides/Ranger Guides/Rangers/Junior Leaders

Do you know about the cancer marathon? This is a 1,000km walk around Victoria. Your leader can tell you more.

Walk Against Want

Are you interested in helping people in developing countries? Why not participate in Walk Against Want! A great activity for Patrols. Ask your leader to tell you more.

Guide Month - May

What is your unit going to do to promote guiding during Guide Month?

Camp Rumberg - 7-10 June

Would you like to attend this camp? It will be held in the Foster Hills near Wilson's Promontory. Your leader can give you more information.

Sunship Earth (Camp Eden) 21-25 September - for Brownies and Guides in grades 5 and 6 at the time of camp.

Closing date is 15 June. Ask your leader about how you should apply.

Health Issues Self Issues Kit

Do you have a kit in your hall? Ask your leader to show it to you.

Shower

Members can arrange to use the shower which is located in the upstairs toilet room.

Shop

The guide shop is situated on the ground floor next to the main entrance and reception area. It is a bright welcoming shop with several young sales assistants waiting to help you fit the correct uniform or choose the right gift for a retiring leader, commissioner or girl guides support group member; advise you on the most suitable books to help with badge work or just leave you alone to browse among the large comprehensive range of swap badges, books, stationery and gifts.

Business hours are from 9.00am-5.00pm Monday to Friday and 9.00am-12.00pm Saturday. The shop is closed for the Christmas/New Year break and re-opens early in the New Year. The shop is not open on Saturdays during January.

First Floor

Office Facilities

Photocopying and laminating facilities are available at a small charge. We also have an electric typewriter available for use within the building.

The office is open from 8.30am-4.30pm Monday to Friday. The advisers' secretary is in the office from 8.30am-4.30pm on Monday and 9.00am-5.00pm Tuesday to Friday.

Resource Centre/Library

Books, magazines, films, slides and some craft material is available for hire or may be borrowed. The environmental resource centre is located in the lounge and also the training department has a mobile resource centre which covers many topics relating to the program.

WHO WORKS AT 20 RUSSELL STREET

State Secretary
Accountant and his assistant
Manager - Support & Services
Manager - Human Resources
Manager - General Office
Advisers' Secretary
Training Secretary
Computer Operator (Records)

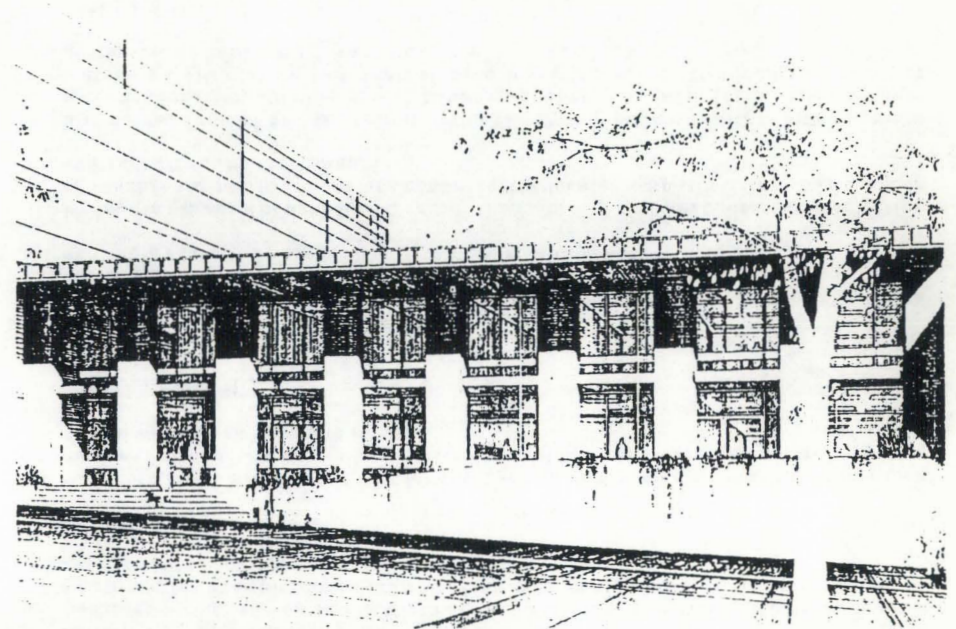
Receptionist
Shop Manager
Shop Clerk
Mail Order Packer
Shop Assistants (2)

WE DO HOPE THAT YOU WILL COME TO VISIT US AND ENJOY THE FACILITIES OFFERED TO YOU. WE LOOK FORWARD TO SEEING YOU DURING THE YEAR AHEAD.

GIRL GUIDES ASSOCIATION

VICTORIAN HEADQUARTERS

YOUR HOME



Have you ever wondered -

What your Victorian headquarters is like?
Where it is?
How you get there?
Can I visit?
What facilities are available?
Who works there?

This booklet may help answer some of your questions.

THE APPROACH

The building is conveniently located in Russell Street, opposite the old Forum Theatre and can be easily reached from:

- a. Flinders Street Railway Station
- b. Parliament Station
- c. Collins Street Tram
- d. Flinders Street Tram
- e. Swanston Street Tram

If you wish to visit headquarters and you find it convenient to bring your car right into the city, the following information may be helpful. If you are driving from country or outer suburban areas there are railway and tramway networks which may have parking facilities nearby.

City Approaches

| HIGHWAY | RAILWAY STATION | PARKING AVAILABLE | TRAM | ROUTE NO. |
|-----------------------|-----------------|-------------------|------|-------------------------|
| Princes Highway | Dandenong | 248D | 98U | - |
| | Oakleigh | 125D | 46U | - |
| Western Highway | Albion | 101D | - | - |
| | Sunshine | 132D | 22U | - |
| Calder Highway | St Albans | 190D | - | Essendon 59 |
| Tullamarine Freeway | Essendon | 228D | - | Essendon 59 |
| Hume Highway | Broadmeadows | 165D | - | Coburg 19 |
| Nepean Highway | Frankston | 442D | - | East Brighton 64 |
| | Dandenong | 248D | 98U | - |
| Maroondah Highway | Box Hill | 475D | - | Mont Albert 42 |
| | | | | Wattle Park 70 |
| Burwood Highway | Glen Waverley | 103D | 108U | East Burwood 75 |
| Epping Road | Epping | 50D | - | West Preston 10, 11, 13 |
| | | | | East Preston 14 |
| Greensborough Road | Heldelberg | 148D | - | Balwyn North 48 |
| Warrandyte Road | - | - | - | Balwyn North 48 |
| South Eastern Freeway | | | | |
| Eastern Freeway | | | | |

Car Parking

To enquire about parking at headquarters, telephone the receptionist on 654 7911. Advance notice is essential as space is very limited.

Public Car Parks - City Area

There are many public car parks close to headquarters, most offer reasonable rates.

ACCOMMODATION / HOSPITALITY

Application may be made to the Hospitality Convenor (refer current Personnel Book). Should city accommodation be preferred it may be possible to arrange advance bookings with the YWCA in Elizabeth Street. For country members attending regular meetings, for example, State Council, trainings, conferences, it may be possible to arrange bulk bookings given sufficient notice.

HEADQUARTERS TOURS

It is possible to arrange such a tour through the Headquarters Tours Organiser (see current Personnel Book). Units, districts, girl guides support groups, and trefoil guilds are all welcome to come and see us.

SOCIAL FACILITIES

Members Lounge

Leaders, girl guides support group members, trefoil guild members, are welcome to use the lounge during office hours to entertain family and friends. Tea and coffee is available at a small charge. The receptionist will be able to help you.

If you wish to eat a bought lunch, rather than a brought, at headquarters, a selection of luncheon/sandwich shops are conveniently located. Up-to-date information is available from the receptionist.

Girl guides support groups, trefoil guilds, interest groups or units visiting, please alert headquarters should you wish to use space there for lunch. If your arrangements include an alternative bad weather plan involving use of the lounge, please let headquarters know well ahead of the day.

Facilities

Ground Floor

Kitchen

The kitchen is located on the right hand side of the passage, up two steps, beyond the toilets.

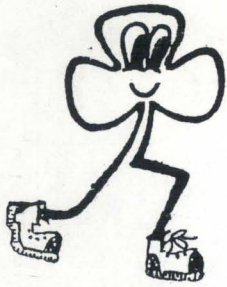
Equipment includes stove, urn, kettle, crockery, glasses and cutlery. The kitchen may be enlarged by moving the bench which opens into the Executive Room.

Catering

You may wish to make arrangements with girl guides support groups and/or trefoil guilds. Should this not be appropriate, information could be given by headquarters re convenient caterers for all grades of food from snacks to hot dishes.

Toilets

There are both MALE and FEMALE toilets on the ground floor. The building is "Category A", that is, has a ramp, wide doors and toilet facility for disabled members.



CANCER MARATHON '91

Name Our Mascot !!

In November of this year 10 members of the Girl Guide Association of Victoria are going to attempt to walk around Victoria covering 1,000 km to raise money for Cancer Research and Palliative Care. We thought it would be fun to have someone to keep us company... Someone that will give us lots of support, encouragement, and watch us, as we take up this challenge.

Yes, that's our Mascot in the top left hand corner - Cute isn't she! Our Mascot is actually a doll and you will be able to visit her soon in the Guide Shop at Headquarters. She will be coming on the walk with us. The Problem is she doesn't have a name, and we are finding it difficult to think of a good one. So, the "Cancer Marathon '91" Team are giving YOU a challenge! - and that is to find a suitable name for her.

We have decided to make this a competition, all money raised going towards Cancer Research and Palliative Care. So - what do YOU need to do? We want you to think of a name most suited to our mascot. It could be a funny name, a serious name, but whatever name you give it, don't forget that its a girl! The entrant who puts in the chosen name will receive the mascot to keep, at the conclusion of the walk. (Hopefully she will make the 1,000 km journey!)

So - GO TO IT!

Get those brains ticking - talk about it in POW WOW, PATROLS, UNIT COUNCIL, LEADERS MEETINGS, AT THE SUPERMARKET, WORK, SCHOOL, & ON THE TELEPHONE !!! -

Your Unit may like to enter a name for each girl!

CONDITIONS

Each person may enter as many times as they like, providing each name is accompanied by the entry fee of 20c.

Anyone, except the "Cancer Marathon 91" Team may enter - So tell ALL your friends.

Entries MUST BE accompanied by the entrants Name, Address, Phone number and "Mascot Name" or entered on the form that will be available at the guide shop where the mascot will be on display. (Please feel free to photo-copy).

Judges decision will be final and no correspondence will be entered into.

The "Cancer Marathon '91 Team will be the judges.

The Winner will be notified by mail, and announced in "Communicating".

The Winning entrant will win the mascot displayed in the shop.

Presentation of the Mascot will be made to the winner at the completion of the walk at the closing ceremony.

Entries can be made at the shop or posted to:

Narelle Elliot
72 Medway St.
Box Hill North 3129

CANCER MARATHON '91
Name Our Mascot Competition
Entry Form

Entrant's Name

Address

Phone No.

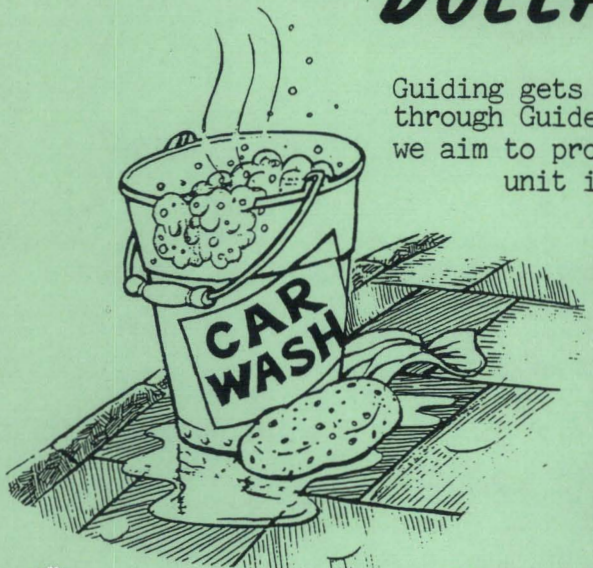
Mascot Name

| Entrant's Name | Address | Phone No. | Mascot Name |
|----------------|---------|-----------|-------------|
| | | | |

AUGUST ACTION FOR ACTION

DOLLARS FOR DOING!

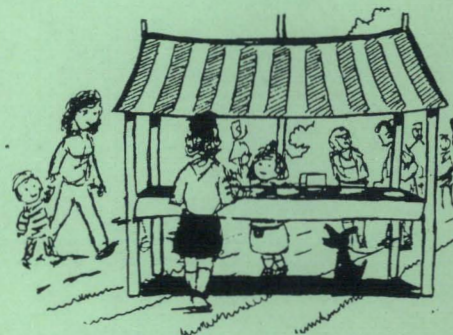
Guiding gets into the public eye at two special times each year - through Guide Month in May, and through August Action. In Guide Month, we aim to promote guiding in the community. For August Action, every unit is encouraged to run a special fundraising activity.



NOW is the time to get into action for August Action 1991! Half the money you raise will go into action to benefit guiding in your unit or district; the other half will go into action at headquarters to develop guiding in Victoria for gumnut guides, brownie guides, guides and the ranger section, and to raise public awareness.

PRIZES!

This year, there will be prizes of ten \$20.00 vouchers from the guide shop, for the best fundraising efforts. To be eligible, girls must write a letter to Gabby Guide, before the end of September, telling her how they raised their money, and what they plan to use it for.



There will be a special letter from Gabby Guide to girls in the May issue of Communicating. She will announce the winners in the December issue.

As well, every girl who takes part in August Action will receive an August Action ribbon.

August Action should be fun as well as fundraising. Unit or district activities will probably be most fun, but individual efforts are fine, too.

SET YOUR TARGET

for action! You might decide to :

- * update your unit equipment
- * provide horseriding at your next camp at Britannia Park
- * update camping equipment
- * set your district up for gumnut guides by providing popovers
- * pay for an extra exciting activity at your next pack holiday or camp
- * subsidise your camp or event fees
- * pay for transport to camp or an activity



You could perhaps draw a barometer to keep track of funds raised as you get closer to your target.

Why not focus on food for August Action? Turn over the page for some food ideas to get you thinking.

FOCUS ON FOOD

Here are some good food ideas you could consider. What else can you think of?

- * Produce a district recipe book and sell it (include vegetarian dishes).
- * Hold a fashion parade using girls and mothers as models, and serve supper.
- * Run a lamington/snow ball/donut/nuts/chocolates/lollies drive (page 1060 in the Yellow Pages A - K has some addresses of suppliers).

- * Invite former members from your district to a luncheon.

- * Serve Devonshire Teas at a function.

- * Organise a cheese tasting.

- * Have a kite-flying day, with different categories and an entry charge, and sell food.

- * Bake and deliver scones.

- * Run a car wash at your shopping centre, or near the local Pizza Hut or chain restaurant at lunch time.

- * Sell bags of apples -can be obtained from Apple World, Bacchus Marsh, phone (053) 67 1367.

- * Organise a cooking demonstration - for example, Egg Farmers of Victoria will give demonstrations (phone (03) 798 7077). Demonstrations must be in the daytime.

- * Organise a festival focusing on one country's culture - dancing, crafts, and food!

- * Sell wrapping paper (maybe to wrap up a gift of food?) Contact B and M Stationery, phone (03) 580 0970.

- * Sell cow manure (needed to grow food!)

REMEMBER TO WATCH OUT FOR GABBY GUIDE'S SPECIAL LETTER FOR GIRLS IN THE MAY ISSUE OF COMMUNICATING. GABBY WILL HAVE MORE GOOD IDEAS TO SHARE WITH YOU.

AUGUST ACTION FOR ACTION

DOLLARS FOR DOING

