



# C

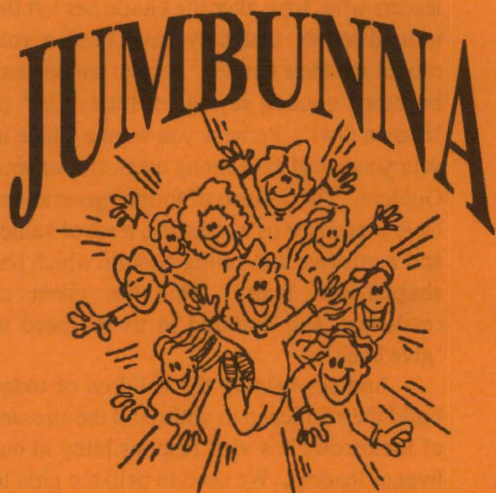
GUIDES  
AUSTRALIA

MAY 1998

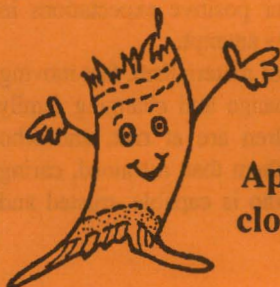
# Communicating

GUIDES VICTORIA

Print Post No. PP349157/00561



See page 31 for details



**RUG**  
Applications  
close 27 May

## *Inside*

---

Region, Division & DL's	3
General	4
Membership	7
Mobile Shop	7
Training	8
Leadership Resource	8
Public Relations	8
International	9
Outdoors	9
Program	15
Guides 5-8	15
Guides 7-11	16
Guides 10-15	16
Guides 14-18	17
Adult 18-30 Olave Program	18
Lones	19
Radio Activities	19
Post Box	20
Focus on Faith	20
Guide Biscuits	20
G.O. Club	20
Properties	21

---

## *From the State Commissioner*

Today, I feel a little sad. During a brief glance at the morning newspaper, I noticed a report of a young person who had committed suicide. Doesn't a report like this make you stop and wonder? Questions flood the mind - like, 'What could be so bad in this person's life to have driven them to do this, at the "prime of life"?' 'Did no-one at home or school realise this person was in such a vulnerable state?', 'Surely someone could have done SOMETHING!'

Today, I am also feeling a sense of loss. This morning a young woman, a friend of our family who has been living with us for a couple of months, has taken the plunge and moved out into a flat. I will miss her, yet I know that she has come a million miles since she first came to us in a vulnerable state. Now she feels strong enough to step out alone. It has been a privilege to have been there for her when the chips were down.

There is often a fine line between being 'on top' of things, and just simply 'not coping'. It takes special effort and inner drive for us to keep our positive outlook. It is an essential skill and could be called our 'resilience'.

What is resilience? It is our capacity to adapt in the face of adversity; and our ability to develop social competence despite being exposed to severe stressors.

Young people need to learn this resilience - this quality will make all the difference to their lives in the future. Helping children to become resilient is a very special responsibility that we have, not only to the person but to the wider community.

The experts are now looking to people like Guide leaders to help girls learn how to become resilient. Factors which contribute to

building resilience are:

- having a significant adult
- opportunities to contribute to the community in real ways
- opportunities to be challenged by learning.

It's a matter of building the 'protective factors', which will give the girls 'the edge' and enable them to lead full and healthy lives, and to be able to make a responsible and worthwhile contribution to the future.

In Guiding, we have always known that a leader plays a significant part in the lives of the girls in her unit. Stories abound from leaders who, long after the Guide has left the unit, discover that they have been a role model for their Guides. Grown women can be heard quoting sayings of their 'Cap' or 'Brown Owl'. Perhaps you were a Guide in your youth, and have strong memories of your Guiders. The women of former generations have created for us a standard, a set of values and a positive and caring attitude which has shaped our lives. This has given us resilience, and nurtured in us the need to 'give back'.

And so, helping the children of today build the resilience to withstand the stresses of tomorrow, is a vital responsibility in our lives as leaders. We need to help the girls to

- feel our care and support
- actively participate in a wide range of activities which build self confidence, leadership and promote a feeling of success
- respond to our positive expectations in everything they attempt.

In a world of materialism, fast moving technological change and changing family structures, children are at risk, and who better to assist them than a trained, caring Guide Leader who is capable, trusted and respected?

A closing thought:

Watch your thoughts, they become your words;

Watch your words, they become your actions;

Watch your actions, they become your habits;

Watch your habits, they become your character;

Watch your character, it becomes your life.

Warm regards,  
Heather Barton

## THE SEOP BOX

(Merial's Message)

It is hard to believe that it is May already. There are a few general matters to bring to your attention this month.

Firstly, Helen Cameron has submitted her resignation and will retire from work to spend more time with her husband, Alex. We all thank Helen for her hard work and commitment to the organisation over the past 10 years and wish her all the best for the future. We also would like to thank Alex for his support for Helen and Guiding during that time.

Secondly, the Program Committee have discussed and evaluated all the submissions received for funding from cork revenue this year. Their recommendation has been accepted by advisers that equipment for hire from the Guide Centre (trangiass, japparass, sleeping mats etc) be purchased and an amount of money be allocated to both Kooronga and Tallawalla campsites for new program activities.

Thirdly, a reminder about the car park. Please ensure you book a space if you need one during the day. It is also important to write your name and car registration next to the car park space number on the blackboard. Please respect the fact that, except in some

circumstances, the car park is for volunteers and staff who have business in the building. Thanks.

I hope the Guiding year is progressing well for you all.

## REGION, DIVISION & DISTRICT LEADERS

"Always look on the bright side of life!" - "Just a nice little song that has been around for years" you may say, but after seeing the film "As Good As It Gets", the 'nice little song' which flows through the couple of hours of viewing takes on a new lease of life. Jack Nicholson and Helen Hunt certainly deserve their Academy Awards but I thought the dog at least earned a couple of nice juicy bones! They say one should never act with children and animals! Do see the film, but a warning, take a few hankies!

You will have gathered by now I have enjoyed a little "time-out" from Guiding thoughts for a few hours and I encourage you to try to do the same. I believe that whatever position we are committed to in our Guiding life and if we want to do the job to the best of our ability, Guiding thoughts are never really out of our heads - so be a "devil" - take a look at another side of this bright life! Remember that well balanced life we all need to enjoy? Yes? As Region, Division and District Leaders you have a special and responsible role to play. At team meetings it can be so easy to be side-tracked and to waffle on about something quite irrelevant to Guiding, especially if you all live in a local community. Due to leaders' time being so precious, these business meetings need to be, thoughtfully planned, informative and efficient, meaningful and enjoyable. If you have achieved this, they should be well

attended by all leaders regularly, in fact, they will never want to miss one! If you would like to self-assess yourself, we do have a leaflet available at Guide Centre for this very purpose. This leaflet could be of help to you when you are due to have your appointment endorsed.

Talking of endorsement of appointments and assessing of competencies, I heard of one region who held a very satisfying and informative day with a Trainer, working through and having all queries and questions answered relating to the filling in of their Journals. Comments heard - "That wasn't so hard." and "So easy when you know how!" Something to think about for the winter term around a nice roaring fire?

To close, just a BIG reminder re the "Celebration of Service" in Ballarat on Saturday 13 June 1998 - I do hope you are having a good long look at the years of Long Service your leaders have given and have recognised them in time to attend this "FIRST" event. (Refer March 1998 *Communicating*).

I know you will be making the most of this - our GUIDE MONTH of May - have a great time.

*Kathie Hutchens*  
*Assistant State Commissioner*

## GENERAL

### Welcome

We extend a warm welcome to Judy Balmforth, the new Director of Fundraising for Guides Victoria. Judy has a lifetime commitment to the education and empowerment of girls and young women. She also brings with her a wealth of varied experience in the private and community sectors.

### QUESTION

What do the following people have in common?

Helen Fowler	Denise Bristow
Helen Heath	Bernice Gilbert
Narelle Gates	Pam Brett
Marilla James	Dorothy Fredricksen
Elsie Williams	Gwen Young
Grace Redman	Dawn Ballard

### ANSWER

These ladies know more about member invoices than most people.

Congratulations to you all - you hold the Guide Centre record for preparing 8000 invoices for mailing 3 days before the due date. What a team!

### Tours of Australian Customs at Melbourne Airport

Has your unit visited Australian Customs at the airport? Have you thought of including a tour of Australian Customs on a night beat of Melbourne? Why not come to the airport for a behind the scenes tour of Australian Customs?

Tours are available on Tuesday, Thursday and Friday evenings only. These days are only available from April to August. After these dates the nights are Thursday and Friday. They commence between 8pm and 9pm.

Tours can be arranged by John Solar (Scout Leader), phone 03 9350 5802 **after hours**.

When deciding on a tour of the Australian Customs please give John a few dates, as tours of the airport are very popular.

## STATE CONFERENCE

### Have your voice heard!

So you are a financial member, having paid your full membership subscription, and want to contribute to the decision making process at the Inaugural State Conference, but you are not attached to a Region. What do you do?

Please phone Guide Centre on 9654 7911 and leave your name, address and phone number for Kathie Hutchens, Assistant State Commissioner. She will contact you and explain how you can achieve this important task.

### ALL ABOARD

#### VICTORIAN STATE CONFERENCE

Incorporating the  
ANNUAL GENERAL MEETING AND  
DINNER

AT WESLEY COLLEGE

557 St Kilda Road, Prahran

10 October 1998

#### COST:

Conference, including morning  
tea/lunch \$15

Dinner, including drinks \$25  
(make up region table)

Total Cost: \$40

Early bird special on total cost only \$38

Applications for special price must be in by  
1 September.

Keynote speaker, discussion groups, voting  
on issues, presentation of new State  
Commissioner. Application form will be in  
June *Communicating*.

**ALL ABOARD FOR A ROLLICKING  
GOOD TIME.**

## Guides Take Technology into the 21st Century!

The new automated phone system puts more control in your hands - you can dial who you require as soon as the call connects. That is, as soon as you first hear "Thank you for calling..." you can dial the extension number straight away and be directed to that area or person.

Shop - 7

Property Bookings - 8

Reception - 9

Accounts - 225

Administration Services - 224

Fundraising - 221

Insurance - 247

Legal Properties - 227

Public Relations - 222

Products & Services - 239

Program/Outdoors - 227

Publications - 234

Training - 238

## Position Vacant

We are seeking nominations

for the position of

**Region Leader - Sunraysia**

(Position vacant immediately)

If you would like to nominate someone for this position, or if you would like to be considered yourself, now is the time to forward names to the State Commissioner. Please contact Heather Barton C/- Guide Centre as soon as possible, with the name, address and telephone number of the person you wish to nominate.

**GUIDES VICTORIA THANKS  
MATTEL TOYS  
FOR THE GENEROUS  
DONATION OF GAMES  
AND PUZZLES FOR THE  
SUPER SUMMER  
SLUMBER PARTY**

A selection of puzzles and games are available from the Resource Centre at Guide Centre, 20 Russell Street, Melbourne  
Call 9654 7911 to book

**Temple Beth Israel Service**

On Friday, 22 May 1998 at 8.00pm Jewish Guides and Scouts will participate jointly in Friday evening worship at the commencement of their Sabbath.

Members of Guides Victoria (in particular 15+) are invited to join us for this service, which is held each year at Temple Beth Israel, 76-82 Alma Road, St Kilda 3182.

Your attendance will provide an insight into the worship of another faith. Come along and experience the music, the sound of Hebrew, the unique sights of the synagogue and take a look at the hand-written Holy Scriptures - the Torah Scrolls. It is always an interesting and informative night and gives you some new opportunities to find out about the richness of the Australian community.

Should you have any queries, please phone the Executive Director, Mr Alan Samuel on 9510 1488 during business hours.

**Lost Property**

If you have attended a Guide Event/Camp recently and not returned home with everything you took with you, chances are it

is waiting for you to collect it from the Guide Centre. Dayle, our Receptionist, is currently looking after unloved gear from **Just Plain Camp**, the **Super Summer Slumber Party**, **COW** and even last year's **Winter Sleepout**. If these items are not claimed by 31 May 1998, they will be sent to a new home at one of Guides Victoria's campsites, so please, show your gear you care and call Dayle NOW!!

**TARGET 2000  
BULLETIN BOARD**

***WE HAVE A NEW DISTRICT!***

Well done and congratulations to North Metropolitan Region for re-opening Sunshine District. There are 2 units with over 30 girls and a Support Group.

The district closed in 1992. Our Community Development Worker, Heather Birch has put in an enormous amount of time and effort to achieve this result - well done!

***WE HAVE MORE GOOD NEWS!***

Aberfeldie Ranger Guides have reopened - congratulations to the Aberfeldie District team and North Metropolitan Region.

Camberwell District has opened a new unit "Camberwell Senior Guides". Congratulations to the Camberwell District team and East Metropolitan Region.

Our 'youth' membership figures as at 28 February were 12,313 (financial members)

## MEMBERSHIP

Adviser - Marg Taylor

### TARGET 2000 TIP OF THE MONTH

National Volunteers Week runs from 11 - 17 May.

Find a special way to say THANK YOU to your volunteer leaders - it could be as simple as a card, phone call, flowers or something homemade, a captioned photo or fun certificate. You can really make a difference.

### TARGET 2000 CHALLENGE & FRIEND MAKER PROGRAM

It's not too late to join the Challenge now. You can score Term 1 retrospectively by looking up your roll & program book, and discussing the program clauses with your Guides.

Your "Region Target 2000 Co-ordinator" will have available after the second week in May:

\*The free "Target 2000" Challenge Badges - these are available for all Guides who are members of a unit which is participating in the Challenge.

\*The free 'reward stickers' for the Friend Maker program.

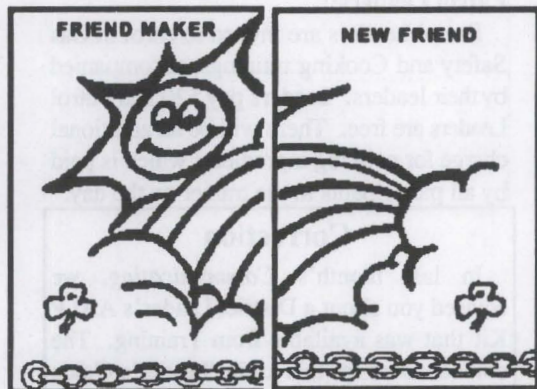
The Guide Shop now has available the "Friend Maker" badges. The badge costs 80¢ and comes in 2 halves.

\*"Friend Maker" part of the badge is for a Guide who introduces a new friend to Guiding and the friend then becomes a

registered member.

\* "New Friend" part of the badge is given to the friend who has become a registered member.

This Friendship chain can continue with girls introducing more than one friend and receiving extra Friend Maker badges.



A "Friend Maker" badge application form is in this issue of *Communicating*.

## MOBILE SHOP

Mobile Shop Co-ordinator  
Bernice Gilbert

The Mobile Shop has the following bookings during May:

May 9 - Recipe for Success Training at Sunbury. The Mobile Shop will be open in the Scout Hall in Miller Street between 11.30am-12.30pm and between 1.30-2.30pm for anyone not attending the training.

May 11 - St Margaret's in Berwick 4.30-5.30pm

May 16 - Mornington Peninsula Region Conference

May 17 - Hume Region Camp - Kallara Conference Centre

May 23-24 - Trainers Weekend - Iluka.

## TRAINING

Adviser - Felicity Wightwick

### Trainers' Weekend - 10-11 October

The weekend has been cancelled, as it coincides with the State Conference.

### Patrol Leaders!!

Patrol Leaders are invited to enrol in Gas Safety and Cooking trainings, accompanied by their leaders. Leaders pay \$20 and Patrol Leaders are free. There will be an additional charge for cooking ingredients which is paid by all participants to the trainer on the day.

### Correction

In last month's *Communicating*, we advised you about a District Leader's AALP Kit that was available from Training. The correct name for this kit is "Leader's Guide to the AALP". Copies have been sent to Region Leaders and Region Training Co-ordinators. To obtain a copy, please contact your Region Leader.

## LEADERSHIP RESOURCE

Adviser - Annette Swaffield

### Leadership Skills Development Weekend for 14-18 year olds.

Friday 19 June - Saturday 21 June 1998

Change of venue due to linking the event with the visit of Melissa Hays from the USA. This weekend is now being held at SHOREHAM.

For application forms please send a self addressed envelope to your Region Leadership Resource Consultant or to Training Department, Guides Victoria, 20 Russell Street, Melbourne 3000.

## PUBLIC RELATIONS

Adviser - Libby Howlett

### A Job Well Done

Congratulations to Ballan District who won first prize for their display at the Ballan Rotary Youth Expo. Great job!

### May is Guide Month and Volunteers Week

This is the time to be seen out and about. Run a meeting in your local shopping centre or local park. Encourage your local paper to do a story about volunteers - a Guide Leader and the important work she does in the community.

Link into displays for Volunteers Week. For your promotional needs, banners, brochures, display boards and advice call Jennie Jackson at Guide Centre on 9654 7911 EXT 222.

### Royal Women's Hospital Footy Appeal

Mother's Day football at the MCG on Mother's Day, 10 May 1998. It is not too late to register your name to sell badges outside the MCG between 12.30 and 2.30 pm. A great opportunity for service to the community and to promote Guiding. For full details see the flyer in this issue of *Communicating*.

### PR Caravan

The bookings for the Public Relations Caravan are lighter over the winter months. No matter what the weather, you will enjoy a successful promotion using the Caravan. Use the various hands on activities, sell food and drinks, show the Guiding video and more. For more information about how the PR Caravan can help you promote Guiding or raise funds contact Jennie on 9654 7911 EXT 222.

## Banners

Thank you to all of you who waited patiently for your bright material logo banners. We are very sorry for the delay. We were overwhelmed with the response for banners. There are now over 60 banners out in the regions and districts promoting Guiding. **WHAT GREAT PR!**

## New Leader Campaign

Each district has received the promotional material. I hope you are using it to your advantage in shopping areas, community centres, libraries etc.

All of us who are members of Guiding are part of a huge PR team. Talk to people every day in a positive and enthusiastic way about your involvement in Guiding and encourage them to "Guide a Life."

## INTERNATIONAL

*Adviser - Glenda Vuillermin*

## Events, events & more events!

Thank you 2nd Leongatha Guides for the Australian craft items to go overseas. They will be put in the next bundle of giveaway bags which are presented to international visitors to the Guide Centre.

**International Uniforms:** Have you borrowed these lately? Let your girls know they are available and they may wish to dress for their next international meeting. Contact Ros Waterman, 11 Young Court, Shepparton 3630, Ph 5821 1438.

It's not too late to apply!!!! Four World Centres Tour departs 1 September 1998 for 40 days. Contact Cliff Harding at East Burwood Travel on 9808 1177.

## RUG

Arrive between 8.30 and 9.00am and you'll be in the best position to see



**CODE 1**

**Police Rock Band**

who will perform until 10am

arrive at 10 and you'll be running late!!!

Information will be sent mid June to units participating so exact details are known for the BIG day.

**Applications close on 27 May** if limited places have not already been filled by that date.

If you have not yet volunteered your rope-making machine/s, leather tools or billy carts, please ring today.

This event will be a day to remember. Bring your unit, join your friends or volunteer to assist with the running of activities. **HEAPS** of things to choose from.

**IMAGINE A DAMPER MORE THAN  
100 METRES LONG!**

For additional information contact Glenda Vuillermin 5427 2558

## OUTDOORS

*Adviser - Julie Armstrong*

## URGENT NOTICE

Recently, the Scout Association of Australia had a negligence case awarded against them for injuries sustained by a participant in the trust activity "Electric Fence". This activity is described in the first

edition (1971) of *Cowstails and Cobras* by Karl Rohnke of Project Adventure Inc., but is no longer endorsed by Project Adventure or Guides Victoria, thus this activity is not found on any Guide property.

Leaders camping on non-Guide properties where the "Electric Fence" is still provided must be advised that Guides are **NOT** to use this activity.

### Program Idea for Next Summer

Do your Guides want to learn to waterski? Why not keep the idea in mind for next summer. The Scout Water Ski Team runs weekends at Fraser National Park between November and April. The program includes instruction, wet suits, and life jackets. For an extra charge the Water Ski Team will also cater for the weekend. More information is available from Rex or Michelle on 9736 4060.

An Adventurous Activity form is required for this activity.

Do you want to know whether an activity is ADVENTUROUS? A list is available

from the Guide Centre. Contact Helen Rowe if you need a copy.

Looking for something different for the Guides to cook for dessert?

### CHOCOLATE CARAMEL PUDDING

1 pkt chocolate cake mix  
1 small block Caramello  
1 oven bag  
1 egg or powdered egg  
Small carton of UHT cream (optional)

Boil approx 12 cms of water in billy. Make chocolate cake according to directions. Tip into oven bag. Break up Caramello and drop into bag. Tie bag and place in boiling water. Cook for approximately 45 minutes. Serves 4. Add cream, if desired, when serving. This dessert can be cooked in Trangias.

### Wattle Wombat Badges

Planning your Environment Day activity? Wattle Wombat Badges are now available from the Guide Shop at a cost of 60¢. Contact Jenny Collis to place your orders.

---

## Go Outdoors During Winter

during your unit meeting

More dates for the Orienteering Association Wednesday Night series.

The cost is: Juniors \$1.00 Adults \$2.00

Winter dates and venues are as follows:		Melways
June 3	Royton St near Burwood Hwy	64H6
June 10	McDonalds Car Park, Springvale Road, Glen Waverley	71D1
June 17	Kooyong Gardens, Glenferrie Road, Kooyong	59C4
June 24	Cathies Corner, Boronia Road service road, Kentucky Fried, Wantirna	63H5
July 1	Central Park, Plenty Lane, Greensborough	20K5
July 8	Athelstane Reserve, Athelstane Drive, Ringwood Nth	49H2

More information is available from Mark on 9722 9292 or the Orienteering Association on 9459 0853.

## CELEBRATION '99 July 31 - August 20 1999



**GIRL SCOUT**

Girl Scouts of the  
South Jersey Pines

This event is for Victorians only.

Enjoy a fabulous week at Camp Sacajawea, between Philadelphia and the Atlantic shore, in Southern New Jersey. The theme of Celebration '99 is Native American Culture, and participants are able to select from the following activity groups - Performing Arts, Water Sports, Folk Arts or Sports. The camp will also include a daytrip to Philadelphia and the seashore.

One week's home hospitality after the event is offered, including an overnight trip to Washington DC, and an optional day tour to New York City (extra cost of approximately \$80)

A Los Angeles stop over is planned, with visits to Disneyland and Universal Studios.

WHEN:	Depart Melbourne	31 July 1999
	Celebration '99	1-8 August 1999
	Home Hospitality	8-15 August 1999
	Los Angeles	15-18 August 1999
	Arrive Australia	20 August 1999

WHO: Up to 12 Guides aged 14-18 at the time of the event.  
3 Leaders (one under 25 at time of event)

COST: \$3 800 includes airfares and insurance.  
Optional New York day tour - approximately \$80

APPLICATIONS CLOSE: 15 August 1998

SELECTION DAY: 30 August 1998

Contact Narelle Riley (Vic International Committee) on 9740 6424 for any further details of this particular event.

---

### 1999 Fairbairn Challenge Event Helen Storrow Seminar, Our Chalet 'Growing in a World of Change' Global Citizenship



Are you between 18-25 years and physically fit?  
Are you fluent in English, French or German?  
Are you prepared to take an active part in an International Seminar and to share your own ideas and view points?  
Are you an active volunteer with Guides Australia?  
Would you like to spend from 30 December 1998 to 9 January 1999 at Our Chalet?

WHEN: 30 December 1998 - 9 January 1999 seminar. Assistance with travel plans before or after event is offered.

WHERE: Our Chalet, Abelboden, Switzerland

WHO: 2 members between 18-25 years.

COSTS: Approximately \$4 000 which includes airfares, event fees, meals, administration costs, international bags/tops and insurance.

Fairbairn Challenge of \$2 500 will be awarded to each successful participant.

State finalist to be available for national selection on 5 and 6 September 1998. One finalist per state.

Vic closing 10 July 1998

Selection 24 July 1998

---

## CANADIAN MOSAIC 99

### "Footprints in Time"

Join WAGGGS members from around the world at one of two locations.

MANITOBA or ALBERTA - in CANADA.

An exciting time of outdoor activities in the Canadian wilderness.

WHEN & WHERE: ALBERTA 2-21 July 1999

Home hospitality	2-6 July
Camp	6-16 July
LA and Disneyland	16-19 July
Home	21 July



OR

WHEN & WHERE: MANITOBA 5-24 July 1999

Home hospitality	5-9 July
Camp	9-19 July
LA and Disneyland	19-22 July
Home	24 July

WHO: 20 youth members aged 14-16 at time of event.  
2 Leaders with camping qualifications.

COST: Approximately \$4 000 which includes airfares, event fees, administration, international tops and bags, insurance, most meals.

VIC CLOSING 29 October 1998 SELECTION 14 November 1998

---



## SANGAM

### The Real Face of Women

### "I am Woman"

Experience Sangam and India, develop self; challenge the myths; explore the WAGGGS perspective; understand the real me.

WHEN: Seminar - 8-22 January 1999  
Follow this with - Explore India Tour 23 January - 2 February 1999

WHERE: Sangam World Guide Centre - Pune, India.

WHO: Members of WAGGGS - over 16 years of age

COST: Approximately - \$2 500 which includes airfares, event fees, administration, international tops and bags, insurance, most meals



EXPLORE INDIA - Taj Mahal, Jaipur, the secrets of Dehli and much more. Additional cost approx \$1 000.

VIC CLOSING 10 July 1998 SELECTION 26 July 1998

---

---

## SANGAM SERVICE PROJECT

Joint Service Project with WAGGGS members from Nordic countries and New Zealand.  
For all interested in participating in an exciting service project - coordinated by Sangam staff.  
Work with Indian women - and share your culture.  
Following this project join your new friends and explore North India.



- WHEN:** 7-22 March 1999 - Explore India tour to follow project.
- WHERE:** Sangam World Guide Centre - Pune, India
- WHO:** WAGGGS members 18-50 years of age.
- COST:** Event approximately \$2 500 which includes event fee, airfares, international bags and tops, insurance, administration costs, and most meals.
- \$ 1 000 Explore India Tour

**VIC CLOSING** 15 August 1998  
**SELECTION** 29 August 1998

---



## PEACE - VISION - POWER World Camp 1999 Foxlease - Hampshire ENGLAND

**Theme:** Building World Citizenship. Join WAGGGS members from around the world and celebrate the 75th anniversary of the first World Camp - held at Foxlease in 1924. Build a Guiding bridge to the Millennium and beyond.

Take part in a Building World Citizenship event. Complete 5 exciting challenges - including survival skills, international friendship, enjoying fun and friendship and gain the World Camp Award, visit Stonehenge, Brownsea Island and other places of interest.

- WHEN:** 20 July - 16 August 1999
- |                  |                    |
|------------------|--------------------|
| Pax Lodge        | 20-24 July         |
| World Camp       | 24-31 July         |
| Home Hospitality | 31 July - 5 August |
| Our Chalet       | 5 -14 August       |
- WHERE:** Foxlease - New Forest, Hampshire, England.  
Our Chalet - Adelboden, Switzerland.
- WHO:** Members aged 14-25 years at time of event (18 -25 years with outdoor camping experience).
- COSTS:** Approximately \$4 600 includes airfares, event fees, administration, international tops and bags, insurance, most meals.
- VIC CLOSING** 29 October 1998  
**SELECTION** 14 November 1998

---

## PEACE - VISION - POWER

### Foxlease



Celebrate the 75th anniversary of the first World Camp 1924.

The World Camp -

- ◆ Stay in Princess Mary House
- ◆ participate in the opening and closing ceremonies at the camp
- ◆ meet young delegates from all over the world
- ◆ join in evening activities and entertainment
- ◆ visit the Global Village - with its theme of Building World Citizenship
- ◆ day trip to Windsor Castle, Stonehenge and Avebury, Salisbury Cathedral

**WHEN:** 24-31 July 1999

**WHERE:** Princess Mary House  
Foxlease  
A UK Guide Association Training and Activity Centre  
Lyndhurst, Hampshire, England

**WHO:** Any adult member of WAGGGS

**COST:** Approximately \$700 per person which includes all trips as listed above, 7 nights accommodation with full board based on single/twin share with en-suite. All meals. (Shared room - max 4 - \$650)

OR

Approximately \$3 800 includes the above and also airfare, international tops and bags, insurance - why not include this event in your 1999 trip to the UK/Europe.

---

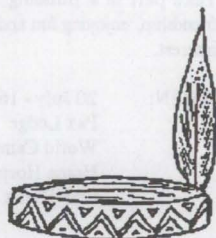
## Melissa Hays visit to Victoria

Pocahontas Pow Wow

Indian Nations Camp

14+ Workshop

Adult Workshop



If you haven't yet applied for any of the above events it may not be too late! Read the details in April *Communicating*, apply for the youth events on the camp/activity Permission Form in the March edition. Melissa will also speak at GAME (Guides Australia Management Event) and the Lones AGM.

Contact Glenda Vuillermin 5427 2558 or Barb Grove 5786 5698 if additional information is required.

## **PROGRAM**

*Adviser - Janeanne Lee*

The new Promise badges are now available in the shop. Remember that this badge, once presented, remains as the only Promise badge the girl wears. At regular stages along her Guiding path she will re-affirm her promise but she keeps this badge. We have heard of units who are re-presenting the badge, this is not necessary.

### **ATTENTION ALL PEOPLE APPLYING TO ATTEND CAMPS AND ACTIVITIES**

When applying to attend any camp or activity, please make an effort to return your forms to the appropriate person by the date stated on the camp/activity information sheet. When applications arrive just before an event, unnecessary problems are created for both organisers and staff.

State camp/activity flyers clearly state a cut-off date for applications. All applicants will be notified of camp details soon after this date. This procedure provides enough time for applicants to receive necessary information, and also for the organisers to plan and implement a successful program.

### **PUT FUN & EXERCISE INTO YOUR PROGRAM**

Scottish Country Dancing is a social dance, usually in groups of eight dancers (not to be confused with Highland Dancing which is solo and competitive).

Scottish Country Dancing is a healthy, intelligent form of exercise and meets the criteria for the Dancer Badge.

Have you considered a series of lessons, culminating with the Dancer Badge or perhaps combined Mother/Father/Daughter sessions?

Fully certified teachers of Scottish Country Dance are willing to teach at your venue, on request. Classes are also available Monday-Friday in most areas. Enquiries: June 03 9515 7201, Myrna 03 9543 5429.

## **GUIDES 5-8**

*Adviser - Margaret Callister*

On Saturday 9 May, Region Program Liaisons will meet at the Guide Centre. Time will be spent together, and in age program groups. If your region liaison has not yet contacted you, please get in touch with her to pass on ideas and opinions that you would like to have discussed, and/or send them to me as it is vital that we have your suggestions and thoughts about the program, events/activities and the growth of Guiding within this age group.

It seems as if there is some confusion about the age at which a girl should make her Promise.

The Promise is not made by girls taking part in the program for Guides 5-8. The basis of this program is "Care and Share" and during these years the girls take part in the widest possible variety of activities to help them understand caring and sharing - which is, of course, also the basis of the Guide Promise. When a girl has developed physically, intellectually, socially and emotionally to have some real understanding of the Guide Promise it is time for her to move on to the next area of the Australian Guide Program. It may be in the same unit, or another unit, but it must be an extension and widening of Guiding activities and she needs to have sufficient maturity to benefit from them. Eight years is given as an approximate, very general indication of an age

when most girls reach this stage of development. There are exceptional younger girls able to understand the concept of the Promise - not just the words - and there are also many girls older than eight who are not yet ready to make the Promise with understanding. In every case, it is the girl who matters, not her age. It is up to us as leaders of Guides 5-8 to provide the experiences that build this understanding and provide the basis for girls to move on through the Australian Guide Program.

From the Great Weekend - Stained Glass Windows. This activity needs to be planned in advance to allow time to press the leaves.

\* Guides bring interesting leaves to the meeting or go for a walk during the meeting and collect them. Press them in paper towelling between heavy books for 2-3 weeks.

\* Place leaves on waxed paper (lunchwrap), waxed side up.

\* Grate small amount of crayon on to the paper. Glitter may be added too.

\* Place another sheet of waxed paper (the same size) on top, waxed side down.

\* With adult supervision, iron gently to apply heat until the crayon melts.

\* Make a frame with strips of coloured paper and staple or glue frame around trimmed waxed paper and display on a window. Kirsten added this tip: "Try at home first to find out how much crayon to use and how much heat to apply".

## GUIDES 7-11

*Adviser - Janeanne Lee*

### CAMP KALPARRIN

Last year Camp Kalparrin was fantastic and the girls who went had a great time!! This year promises to be even better and we would like you to encourage your girls to apply. The camp

will be held at beautiful Britannia Park again and will be held from Sunday 20 September until Friday 25 September. As this is the 60th Anniversary year for Britannia Park it would be a great year to attend a State Camp. So please ensure you give your girls the opportunity of a lifetime and tell them about it!! The cost for the camp will be \$190. Further information and details of how to apply will be in June *Communicating*.

Leaders you may also like to attend - if so please write to me at Guide Centre and let me know. The cost for leaders will be \$70.

### RUG

I hope that you have all applied to attend RUG. A lot of work has been done in preparation and we will all have a great time.

## GUIDES 10-15

*Adviser - Liz Richardson*

### JUMBUNNA (Aust Patrol Leaders Event)

Date: 16-22 January 1999

Where: Sydney

Who: 12-14 year olds

Cost: \$500

An event like this is a once in a lifetime opportunity so please give your Guides the information on this event. Applications are available from Guide Centre and close on 27 May 1998. Interviews to be held on Saturday 30 May 1998.

### State Patrol Leaders' Training

When: 17-19 July 1998

Where: Britannia Park

Cost: \$65

Who: 11 yrs +

Applications available by sending a stamped, self addressed envelope to Guide Centre, 20 Russell Street, Melbourne 3000. Applications close 3 July 1998.

## Bay Camporee

Date: 28 Dec 1998 - 5 Jan 1999

Age: 10½ - 15 years

Cost: \$250 - Guides

\$135 - Leaders

Applications are available from Guide Centre and close 30 June 1998.

## BP Presentation

Date: 15 August 1998

Who: Old BP Guides who finished by 30 June and all new BP Guides finished by 25 July. There is no limit on how many guests can be invited.

## GUIDES 14-18

Adviser - Toni Peters

When a Guide is preparing to write a report for her chosen Focus Certificate within the Queen's Guide Award there are a few things that the Guide (and her Leaders) should think about before the Guide submits her report. Here are some guidelines that will assist in making the reports meaningful and self-explanatory without being boring.

- A) What topic/activity was chosen
- B) Why this topic/activity was chosen
- C) Age group of people Guide is working with for topic/activity
- D) Type of group (eg horse riding club, RLSS course, 7-11 Guide unit, etc)
- E) What the Guide "did" with this topic/activity (in summary) and
- F) What did the Guide gain from this experience.

Some photographs, even videos, to support the topic or activity that the Guide participated in always adds depth to the report. Correct labelling and identification of the photographs is most important.

The Guide would be wise to keep a log book

or diary of her service, so she has the material to include in her report. Upon completion, the report is to be sent to me at 2/48 Lincoln Avenue, Glen Waverley 3150.

It must be neat, informative and show what she has achieved and how she has challenged herself. The report, photographs and any other supporting documentation or presentation material will be returned to the Guide upon assessment.

This same approach can also be used for the report that is required for the Guide's chosen Service interest in the Gold Endeavour Challenge section of the Queen's Guide Award.

## VENTURASPECT

This is run by the Venturer branch of Scouts and is to be held at Monash University, 25 July and 26 July, 1998. It is an event for 14-18 Venturers and their Leaders, and 14-18 Guides and their Leaders. The program consists of such things as Guest Speakers, Venture 2000 presentation, youth issues workshops, ORCA requirements, adolescent health, and much more. Keep watching *Lost the Plot* for more information and application forms.

## ESGAV

This year's ESGAV (Ethnic Scout and Guide Association of Victoria) camp was a great success. There were four representatives from Guides Victoria. Watch *Lost the Plot* for interesting reports.

There were many awards presented at this year's ESGAV in recognition of the dedication people have had towards ESGAV camps. Both Heather Hyatt and Jan Hopwood received awards for participation in 7 camps. Barbara Kearney received a 20 year involvement award. Well done, ladies!!

## VEGFest '98 and RAVE '98

Both these events are going to be

sensational. VEGFest '98, in July at Lingbogol, Creswick is well under way and everything is going according to plan. The Youth Executive Committee have all wheels in motion for 4 fantastic days at Creswick. Don't forget, this will be your chance to nominate for a position on the 14-18 Youth Executive.

18-20 September it is off to Britannia Park for RAVE. This event is being organised by a joint Guides Victoria and Scouts Victoria committee and is going to be HUGE. It is a weekend away full of fun-filled activities for 14-18 Guides, Venturers and their Leaders. Look in this edition of *Communicating* for further details.

See you at a State event soon!

## **ADULT 18-30 OLAVE PROGRAM**

*Chairman - Claire Baker*

The ADULT 18-30 columns in February, March & April *Communicating* have had a lot of detail about the program. Try and get hold of a copy if you have not seen them. Are there any issues you want to raise? Do you want to hear more about the Olave Program? Please send to: 18-30's State Committee, C/- Secretary Karen Chatto

1102 Norman Street, Wendouree 3355

Email: k.chatto@nre.vic.gov.au

There are many questions being posed about issues such as ranger badge work, definitions of membership in each state, registration and documentation of membership in each state and the national structure and how it will actually work.

March *Communicating* briefly explained what has happened since Koninderie. The National Working Party (Interim Committee) has met with National Executive regarding the

future of our age group, 18-30. To discuss ways this can be done and ready the membership to take up the challenge, a National Forum has been set down for 18-20 September. The forum will be restricted to three representatives from each state.

More details of the National Forum will be reported in *18-30 AM* (State Program Magazine) June Issue.

### **Mother's Day**

On Sunday 10 May, I will be at the MCG for the Royal Women's Hospital Mother's Day Appeal at the football. The details are in *Communicating*. I look forward to receiving your phone call to register (I have an answering machine also). See you on the day!

### **Nightclub Tour**

Friday 22 May. Ready to depart Guide Centre at 7.00pm. Olave Program Members - \$25.00 Non-Olave Program Members - \$28.00 (Friends & over 30yrs - female only). Dinner included at the Sheepsback, free entry to 4 nightspots and heaps of prizes to be won... Car park available at Guide Centre, first in best dressed. Bring your sleeping bag, pillow and party shoes for a fantastic night on the town. Application Form in *18-30AM* April Issue (State Olave Program Magazine), still available at Guide Centre, or contact Rebecca Oliver on 9532 8681.

### **May- August 1998 Calendar Olave Program**

Sun 10 May - Royal Women's Hospital Mother's Day Appeal at MCG

Fri 22 May - Nightclub Tour

5-8 June - Mudbash

Sun 19 July - Regional Epilepsy Trivia Challenge

Sat 25 July - MARB

Sun 26 July - Regional Epilepsy Trivia Challenge

31 July - 2 August - Camp There! Annual Camp  
Sun 2 August - Melbourne Finals - Epilepsy Trivia Challenge

### White Water Rafting

In March *Communicating*, White Water Rafting was listed incorrectly. The correct dates are 17 - 18 October.

April 18-30AM (State Olave Program Magazine) is still available in Guide Shop and has the following Application Forms: Nightclub Tour, Annual Camp & White Water Rafting.

## LONES

*Adviser - Helen Heath*

Lones will now be more easily identified if they are wearing the Lone Rugby Top. The colours are exclusive to lones - gold, red and navy with LONES in white down the right sleeve. They are not available in the shop but by order twice a year only. I have a current order being made and when it is ready I then have the task of posting 55 rugby tops all around Victoria, New South Wales, Queensland and Western Australia.

In order to minimise costs and to have secure packaging we are trying to recycle post bags that are sturdy but not too bulky and heavy. Envelopes are too flimsy to hold the weight of the top. If you have any post bags that are A4 size or larger and would like to donate them to a worthwhile cause please leave them at the Guide Centre - marked to Helen Heath, Lones and leave a note in the Lones pigeonhole saying the parcel is there for collection. Thank you very much for your help. (Lone Rugby Tops are ordered by 1 March and 1 October and cannot be handed out at unit meetings.)

## RADIO ACTIVITIES

*Consultant - Joy Savill*  
PO Box 91, Heywood 3304  
e-mail: [joys@anson.com.au](mailto:joys@anson.com.au)

This past month I have received a couple of enquiries about not receiving badges for JOTA/JOTI. Perhaps it is not clear, so I will explain it now. After the event (3rd weekend in October) you send me a report of your days' activities plus a cheque to cover badges to be sent to you.

Thank you to those who are sending for information via my e-mail address. I am presently working on the Internet Information Sheet and will pass it on to you as soon as I have it compiled. Please be patient and you will have it in plenty of time.

This month, if you are looking for activities to do, you could discuss with your District how you can run a District/Region or combined day with the Scouts (if you do combine with the Scouts please let me know).

Also, many of the Radio Clubs would welcome a visit so the girls can see that members are just ordinary people. You never know, one of your older Guides may be enthused to get an amateur Radio License and thus become your Radio Operator for future JOTA weekends. It is a challenge but a very interesting one as I have found while studying. I have now passed my regulations which is half a Limited Novice or quarter of Novice.

If you have never taken part I am sure you will find it a worthwhile activity that doesn't cost a lot of money. If you would like to know where to contact your local Radio Club or even an operator within your neighbourhood please don't hesitate to contact me and I shall do my best to locate something for you.

It will also enable you to make new friends with Guides and Scouts throughout the world.

If you would like more information please don't hesitate to call me at home or send me a stamped, self-addressed, business size envelope.

## **POST BOX**

*Secretary - Margaret McNeill  
10 Sturt Street, Shepparton Vic 3630*

There are many requests coming through from overseas for Penfriends.

If you or your girls would like a Penfriend from overseas or interstate, just send your name, address, DOB, phone number, unit and a stamped self-addressed envelope to me and I will find a Penfriend for you.

It is nice to receive notification if your link is successful or not. If your link hasn't been successful after a reasonable time, please let me know and I will find another link for you.

## **FOCUS ON FAITH**

*Adviser - Liz Cook*

### **Faith Communities of Greater Dandenong**

Tours of places of worship - visit the churches, temples and mosques of Greater Dandenong.

Experience the diversity of a multi-faith community.

Bus departs from City Offices, 397 Springvale Road, Springvale 9.30am, and returns at 3.00pm on 13 May, 8 July, 9 September and 14 October. Donation: \$7.00 transport, BYO lunch.

Further details from Liz Cook on 9853 5750.

## **BISCUITS**

*Co-ordinator - Sheila Stancombe*

### **Additional Information about Biscuits**

This year, Guide Biscuits will need to be delivered to a business, shop, school or Guide Hall and, as in the past, all delivery dockets will need to be signed.

Any small orders will need to be delivered with a larger order, or joined to make one large order. Collection/pickup details will be advised closer to the delivery time. Please continue to note your delivery details on all order forms.

The 12% sales tax is included in biscuit prices already quoted. Weight of packets of biscuits is as follows:-

Plain:	250g
Cream:	250g
Chocolate:	200g.

All invoicing for biscuits is being done via Guide Centre and we are utilising the Shop Invoicing system to do this.

For every girl that sells a carton of biscuits, there will be a 'Guide biscuit badge' awarded. This badge will change each year.

Thank you again to all those Units, Districts, Support Groups and Trefoil Guilds that are participating in the bake this May. We do realise that there are some changes as we move supply from Arnotts to Westons.

## **G.O. CLUB**

**9-13 May**

**Safari - 3 State Ramble**

Contact Jan Brown on 9439 9783

**14 June**

**Walk - Studley Park to Dight's Falls and thereabouts. Bring lunch.**

Contact Nancy Berndt on 9457 2306 by Wed 10 June.

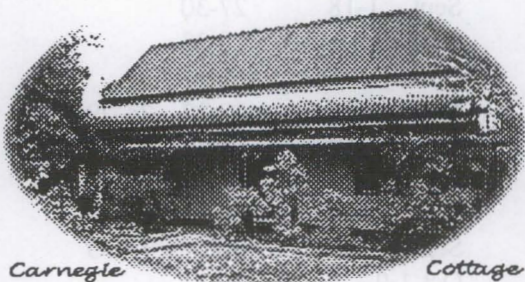
**21 June**

**Freeway - City Link Viewing**

Contact Eileen Gunther on 9546 6049 by Wed 17 June.

## PROPERTIES

### CAMP CARNEGIE



*Carnegie*

*Cottage*

The Carnegie Cottage at Donvale is ready for Guiding members and friends to stay in.

There are beds for 5 with room for 5 extra on BYO lilos.

Cost is \$10 per night per person  
Min \$30 per night.

With the new Eastern freeway extension completed the city is now 20 mins away.

Plan your stay while Melbourne.

Central has some fabulous events planned.

For bookings ring Guides Victoria 9654 7911.

## Looking for Somewhere Different to Have a:

- ☛ Relaxing weekend away with family, or other leaders?
- ☛ Patrol Leaders Weekend?
- ☛ Unit Camp?

## Why not Visit "TAPESTRY"

Strathewen - "Guides Victoria's Bush Retreat"  
23 Hectares of bush just 53kms from Melbourne

Accommodation: Indoor- House: sleeps 8  
- Panda: sleeps 8

Outdoor - Hike Tents  
- Yarra Valley Campsite

### Local Attractions:

- ☛ Visit St Andrew's Market on a Saturday morning
- ☛ Explore Kinglake National Park
- ☛ Pick your own Straw/Raspberries at local farms
- ☛ See the natural flora and fauna whilst Horse Riding
- ☛ Gently paddle a canoe in Kinglake

All this, and more, is here for the taking when you stay at "Tapestry"

For bookings: Guides Victoria  
20 Russell Street  
MELBOURNE 3000  
Ph: (03) 9654 7911

## CAMPSITE VACANCIES FROM MAY 1998

Many people comment that our properties are of a high standard compared to other campsites they have visited, so please secure your booking date early. Please be aware that our properties are sometimes being hired by outside mixed groups. **BRITANNIA PARK** is now accredited. The abseiling tree is up and so are the platforms for camping which are proving very popular. Cooking equipment is available for platform campers.

**SHOREHAM** is looking great and the lake is providing endless hours of fun.

**TAPESTRY** is a great place for a family weekend away.

**CARNEGIE** is a comfortable cottage available for hire (accommodates 8). Great for country people to stay for city weekend. Twenty minutes from the city.

### Britannia Park : Brownie Cottage

May	1	3-23	24-31	24-29
June	1-5	8-12	14-24	28-30
July	3-7		10-17	19-31
Aug	1-19	23-28		23-31
Sept	1-11	13-18		25-30 25-29
Oct	4-9	11-16	18-23	25-31

### Britannia Park: Guide House

May	1	3-15	17-22	24-29
June	1-6		8-12	14-19 21-24
July	5-10	13-17	19-31	19-24 29-30
Aug	2-11	16-19	20-31	30-31
Sept	1-4		6-11	13-18 25-30
Oct	1-9	11-16	18-31	25-31

### Iluka : Aulua

May	3-9		10-15	17-22	24-29
June	1-5	8-12	14-19	21-26	28-30
July	1	10-14	19-24	26-31	
Aug	2-21		23-31		
Sept	1-4	6-7	12-20	27-30	28-30
Oct	1	4-10	11-19	30	

### Tapestry: House

May	1-9		10-22	24-29
June	1-6		7-12	14-30
July	2-17		19-31	
Aug	1-7		9-31	
Sept	1-22		24-30	

### Britannia Park: Broadhurst

May	3-8	6-16	17-23
June	1-5	8-19	21-26
July	1-17	19-31	
Aug	2-7	9-10	16-21
Sept	1-4	6-11	13-18
Oct	2-31		

### Britannia Park: Thankyou Chalet

May	3-8	10-15	24-29
June	1-5	8-12	14-19 21-27 29-30
July	1-2	5-10	12-17
Aug	2-11	12-16	20-28
Sept	1-18	27-30	
Oct	1-9	11-16	18-23

### Iluka : Warrawong

May	3-15	17-22	24-29
June	1-12	14-19	21-30
July	1-5	12-24	26-31
Aug	2-14	16-21	23-28
Sept	1-4	6-8	13-23
Oct	1-9	11-19	26-31

Please check on dates all the time as vacancies do come up.

One night weekend bookings available.

I have had some inquiries about having one night stays at Britannia Park and Shoreham. To try and cater for these bookings the dates below are available. Other bookings can be made if I can link you with another group wanting to do the same thing, so give Robyn a call at Guides Victoria 9654 7911.

Britannia Park	May 1st	9th and 22	September 11-12	18-19	Any of December
Shoreham	May 8th	July 17th	September 11-12	Oct 9th	Any of December

### CANCELLATIONS.

Please note: When cancellations do occur and the site is not rebooked all deposits are forfeited. If the site is rebooked you will receive a 90% refund.

# *Where are you ALL ????*

*Past committee members  
of  
Commissioner's Conferences  
and CANDLES*

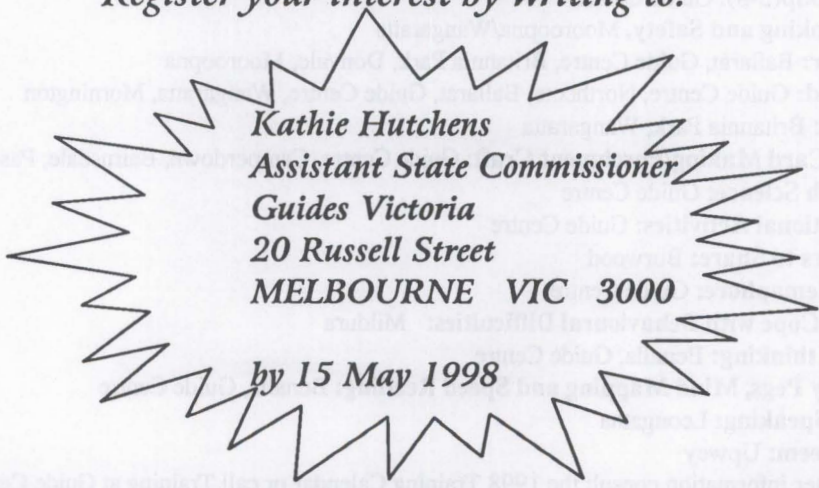
*An informal gathering is to be held on:*

*Saturday 30 May 1998*

*at*

*Guide Centre Victoria from 1.30 pm*

*Register your interest by writing to:*



*Kathie Hutchens  
Assistant State Commissioner  
Guides Victoria  
20 Russell Street  
MELBOURNE VIC 3000*

*by 15 May 1998*

## TRAINING

---

### Guiding Partners - we need to know you're there!

If you are a Guiding Partner please let us know so that we can keep in touch with you.  
Complete this coupon and send it to Training, Guide Centre, 20 Russell Street, Melbourne. 3000

Name.....

Region..... District.....

Your mailing/home address.....

.....Postcode.....Phone:.....

List names of New Leaders you are Partnering

.....  
.....  
.....

I have completed/not completed Guiding Partner Training (circle appropriate answer)

---

### Mid year trainings

A reminder about Trainings offered in June, July and August.

**Leadership Modules:** Traralgon, Geelong, Wangaratta, Guide Centre, Bendigo, Mulgrave, Echuca, Upwey, Burwood, Doncaster, Mildura, Ballarat

**Guiding Partner:** Guide Centre, Melton, Mildura, Bentleigh

**Recipe for Success:** Mornington

**Way to Go:** Burwood, Wangaratta, Leongatha

**Age Group(5-8):** Guide Centre

**Gas Cooking and Safety,** Mooroopna/Wangaratta

**Outdoor:** Ballarat, Guide Centre, Britannia Park, Donvale, Mooroopna

**First Aid:** Guide Centre, Northcote, Ballarat, Guide Centre, Wangaratta, Mornington

**Singing:** Britannia Park, Wangaratta

**Crafts/Card Making/Parchment Craft:** Guide Centre, Camperdown, Bairnsdale, Pascoe Vale

**Fun with Science:** Guide Centre

**International Activities:** Guide Centre

**Activities to Share:** Burwood

**Super Semaphore:** Guide Centre

**How to Cope with Behavioural Difficulties:** Mildura

**Lateral thinking:** Benalla, Guide Centre

**Memory Pegs, Mind Mapping and Speed Reading:** Benalla, Guide Centre

**Public Speaking:** Leongatha

**Self Esteem:** Upwey

For further information consult the 1998 Training Calendar or call Training at Guide Centre on 03 9654 7911.

## "FRIEND MAKER BADGE" APPLICATION FORM

To purchase Friend Maker Badges, this form must be filled in and given to the Guide Shop. The badges cost .80c each and come in two halves ie. Friend Maker half & New Friend half.

Friend Maker's Name	Membership No.	New Friend's Name	Membership No.
1/.		1/.	
2/.		2/.	
3/.		3/.	
4/.		4/.	
5/.		5/.	
6/.		6/.	

Unit ..... Date.....

Leader's Name ..... Signature.....



### BRITANNIA PARK'S 60TH BIRTHDAY PARTY FROM 29 - 31 MAY 1998

The party of the year! And a fantastic variety of activities in three activity blocks - Saturday morning & afternoon and Sunday morning. The base fee for the camp is \$65, which includes your food and accommodation. Some activities will attract an additional cost. Please indicate your preferences on the application and send with your cheque payable to "Guides Victoria" - when calculating your fee, assume you are doing your first 3 preferences.

Free time can be literally that - a walk to the falls, orienteering, chatting with friends, board games, reading, a visit to Heritage Hut or join us for afternoon tea.

THERE ARE STILL A FEW VACANCIES FOR  
THIS CELEBRATION WEEKEND

PLEASE RING  
JUDY TODAY ON 5967 1331  
FOR AN APPLICATION FORM



## caving weekend

Come and join us for a deep, dark adventure, a grovel under the ground, a roll in the mud.

**Where:** Portland Limestone Caves (Portland Guide Hall)

**When:** Friday 29 May - Sunday 31 May 1998

**Who:** All 14-18's and Leaders in Victoria.  
Beginner's welcome!

**Cost:** \$28 includes Saturday dinner only  
(does not include transport and other meals)

**Applications close 16 May 1998.**

For more info contact:

**Tania Provan:** AH (03) 9376 2040 or  
email: [probur@quantum.net.au](mailto:probur@quantum.net.au)

or **Linda Utt:** Ph (03) 9844 2889

# RAVE

'98

A WEEKEND PACKED FULL of FUN  
and ADVENTUROUS ACTIVITIES  
for 14-18 Guides and SCOUTS  
and THEIR LEADERS

**WHEN:** 18-20 September 1998  
*put it in your diary now!*

**WHERE:** Britannia Park, Guide House Road, Yarra Junction  
*A fantastic Guide property with lots of new and exciting on-site activities and access to great local off-site activities.*

**COST:** \$45 includes all meals, camping fees and most activities.

*Watch out for more information in the next edition of:*

INTERCHANGE \* COMMUNICATING \* LOST THE PLOT



## Camp Application Form Veg Fest '98



Please complete form and return with full camp payment (see over) and a business size, stamped self-addressed envelope to: Guides Victoria, Veg Fest '98, 20 Russell Street, Melbourne 3000 by: 12 June 1998

**Please Print**

Surname:	Name:
Mailing Address:	
Postcode:	Telephone:
Membership No:	Unit Name:
Age (at time of camp):	

Are you (please circle): Guide 14-18, Leader, Female Venturer, Other .....

What are your special dietary needs? (Eg Vegetarian, no tomato etc) .....

Do you have any disabilities? (If yes, please specify) .....

I will be attending Veg Fest on: (please tick)

- Thursday 9 July - Sunday 12 July (all of camp)  
 Saturday 11 July - Sunday 12 July (two days)

Accommodation Preference:

- Indoor (preferences will be given in order of applications received)  
 Outdoor (you will need to bring your own tents)

What transport will you be using to get to Veg Fest?

- Car       Mini Bus       Train       Other (please specify) .....

Applicant's signature: ..... Date: / /

Parent/Guardian's signature: (if under 18) ..... Date: / /

Leader's Recommendation: ..... Date: / /

For any questions or queries you may have about Veg Fest, contact:

Jill Cornish  
 Leader on Victorian  
 Youth Executive  
 9752 7192

Louise Harnes  
 Victorian Youth  
 Executive Member  
 9546 6293

**A cancellation fee will apply.**





# ***VOLUNTEERS NEEDED***



**For the Royal Women's Hospital  
Mother's Day Appeal  
at the Footy**

**What:** Girls aged 14+ are needed to sell Forget-Me-Not Pins at the MCG prior to a Melbourne vs Richmond Footy Match

**Date:** 10 May 1998

**Time:** 12.30pm - 2.30ish

**Where:** MCG (meeting at Gate 10)

**Call:** Claire Baker on 9571 7375 to register your interest

Participants will receive a long sleeve t-shirt and are encouraged to wear their Guide Baseball Caps (If you need to buy a Guide Cap you can purchase one at the Guide Shop. Remember you receive a 10% discount with your membership card and if you are buying it because you are taking part in this event the Guide Shop will give you an additional \$1 off.)

**Help us support  
the Royal Women's Hospital  
Mother's Day Appeal**

# Guiding E-MAIL LIST

Do you have an E-Mail address?

If so, do you want to be on the

## Guiding E-MAIL LISTING?

The list is being compiled for two more weeks and then all on it will receive a copy. You need to send the details below to -

**bilana@net-tech.com.au**

- ☆ Your name & age range - 20, 21-30, 31-40, 41+
- ☆ your E-Mail address (note if home or work)
- ☆ if fax available on computer (& number)
- ☆ your unit and/or age range
- ☆ your position/s in Guiding (ie Leader, DL, Adviser, Trainer, whatever)

If you are comfortable with including these details too

- ☆ your Guiding history (ie Brownie, Guide, time as a leader ???)
- ☆ Any special interests you have in Guiding

(This is being compiled by a Victorian Training Team member)



GUIDES  
AUSTRALIA  
VICTORIA

**E-MAIL**

*Closing date of  
first list  
15/5/98*

## MELBOURNE GANG SHOW 1998

Come and follow the exciting adventures of the greatest warrior of all time as he battles his way through the most terrifying quest ever. His journey was almost as difficult as arriving in Melbourne in the 1950's. Laugh, cry and delight in this beautiful tale of how the old has helped our present and future.

Then it's off to a colourful world where dogs just may be more human than we give them credit for. Will Rex manage to overthrow the evil Mr Roach, who wants to turn all of the world's stray dogs into canned dog food?

*It's a Doggone Life; be part of it.*



Written, performed and produced by over 200 Scouts and Guides, we bring training in theatre to our members whilst giving you, our audience, the benefits of our work.

Darebin Arts and Entertainment Centre  
from 28-30 May (4 shows)  
National Theatre St Kilda from 3-13  
June (8 shows)

**CALL THE  
TICKET  
HOTLINE  
NOW ON  
(03) 9309 4647**

---

# JUMBUNNA

## OUR NATIONAL EVENT FOR PATROL LEADERS IN THE OLYMPIC CITY OF SYDNEY

**LEADERS - Do you have a potential state representative in YOUR unit?**

- ☛ a Guide with special leadership qualities
- ☛ a Guide capable of developing leadership skills
- ☛ a Guide willing to share skills learned at Jumbunna with others

**YOU DO!** Nominate your Guide now through your region or state.

### General Information

- WHERE:** Vision Valley Conference and Recreation Centre,  
Vision Valley Road, Arcadia NSW
- WHEN:** Saturday 16 January to Friday 22 January 1999
- WHO:** 170 Guides aged between 12 & 14 years at the time of camp
- CAMP FEE:** \$500.00 per person (deposit of \$250 due by 29 May 1998  
Balance due by 30 November 1998)
- WHAT:** Leadership skills, outdoor challenges and development of life skills. Activities will include archery, planning patrol times, campfires, sight seeing, swimming, pioneering, self defence, canoeing, hanging out at the ice cream parlour, communicating with others, discussion times, ropes course and sharing ideas about Guiding and how we can make a difference to the future.

**CLOSING DATE:** 29 May 1998 (including \$250 deposit)

**Interviews for Selection:** 30 May 1998 at Guide Centre

A-K from 2-3pm L-Z from 3-4pm

## NEW PROMISE CERTIFICATES DUE ANY DAY NOW !!!!

There will be three new Promise Certificates available :

1. Promise Certificate - younger Guides
2. Promise Certificate - all Guides
3. Promise Certificate - renewal

**END OF SUMMER SELLOUT** - Short Sleeve rugby tops are going out at 20% off their marked price (current stock only)

**DON'T FORGET THAT WITH YOUR CURRENT MEMBERSHIP CARD YOU CAN GET 10% OFF ALL YOUR PURCHASES**

**NEW IN THE GUIDE SHOP THIS MONTH**

Casual Socks - Navy with jade trefoils, and white with purple trefoils (available in sizes child 9-12, child 13-3, adult 2-8 and adult 8-11). **ONLY \$7.95** (makes a great gift)

Baseball Caps - brushed cotton, navy crown with jade or red peak, trefoil design embroidered in peak colour. **ONLY \$ 14.50**



Wine Glasses - modern style wine glasses with gold rim and Guides Australia logo \$7.95  
(Gift boxes to hold 2 glasses available \$1.75)

English Fine Bone China Mugs - White with gold rim and Guides Australia logo, \$15.95  
(Gift boxes to hold 1 mug available \$1.20)

**DON'T FORGET THAT WITH YOUR MEMBERSHIP CARD YOU CAN GET 10% OFF ALL YOUR PURCHASES**

**BARGAIN T-SHIRTS** - there are still some Icon t-shirts in stock at the bargain price of \$9.95. Mostly childrens sizes left in pale and dark pink.

**PLEASE NOTE:** The Guide Shop will be closed on Tuesday 30 June for Stocktake. We need volunteers to help on this day and 1 July. If you have a few hours to spare and would like a free lunch, give Jenny in the Guide Shop a call.

# GUIDE SHOP

20 Russell Street Melbourne. Telephone: 03 9654 7911 Fax: 03 9650 2436  
**OPEN MONDAY TO SATURDAY 10am - 4pm**