

VOLUME 54 NUMBER 1

JULY, 1976



# Matilda

GIRL GUIDES ASSOCIATION OF VICTORIA





## A Message from our State Commissioner:

*How often do we wish we could be in two places at once? I feel that way now. Whilst I am enjoying my travels to the full, making new friends and visiting fascinating places, I am very sad not to be with my Victorian Guide family at this exciting time when important changes are about to take place.*

*I firmly believe that the new age groups will greatly benefit all our young people and I hope the changeover to them will be accomplished smoothly and with happy anticipation of the exciting days ahead.*

*Love and best wishes to you all,*

*Joan E. Grimwade*

## In this issue . . .

	Page
Acting State Commissioner's Letter	3
Australian Post Box	25
Brownie Guide Ribbon of Gold	14
Busy Brownies	19
Chief Commissioner's Visit	9
Guide News	27, 29
Guide Shop	28
Habitat	27
International	24
Local Association Section	20
Mini Olympic Games	23
Notices	7, 8, 10, 19, 23, 28, 32
Personnel Changes, etc.	31
Queen's Guide Ceremonies	12
Ranger Notes	10
Reporting from Russell Street	4
Training Calendar	30
Training Pages	15, 18
Trefoil Guilds	26
Tune In on Change	5
Universal Children's Day	14
Victorian Patrol Leaders' Gathering	13

# MATILDA

PUBLISHED BY THE GIRL GUID ES ASSOCIATION OF VICTORIA  
20 RUSSELL STREET, MELBOURNE, VICTORIA, AUSTRALIA, 3000

State Commissioner: MRS. F. S. GRIMWADE

State Secretary: MISS M. W. BARR

Assistant State Commissioners: MRS. D. O. OLDFIELD

MRS. A. J. TURNBULL

Editor: MRS. L. I. RICHARDSON, 31 Hampshire Road, Forest Hill, 3131





## *From our Acting State Commissioner*

Dear Everyone,

The first postcard has arrived from Joan — from Honolulu. It is hard to imagine her basking in the sun over there while we are having some very cold, wintry weather. Joan and Fred will now be touring through Europe, after visiting Mexico, Bermuda and London. We are looking forward to our next communique.

I hope those badly affected drought areas have received rains as we in the city and metropolitan areas have recently, rains sufficient to help crops and pastures towards good growth and quality.

July heralds the very important announcement of new age groupings in the Guide Movement throughout Australia. This is a decision which has come about as a result of surveys taken in each Section during 1975, to find the best way of structuring our Movement to suit all ages. (You will find details in the centre of this issue.) Remember it is the result of findings from the girls themselves on the Eight Point Program that has brought about the changes. We believe it will work well and will give more girls greater opportunities to benefit fully from their years in Guiding.

It gives me very much pleasure to extend a warm welcome to our new Training Adviser, Miss Enid Bunning. "Bunny" is very well known to so many of you, as a Guider, Camp Adviser, Trainer and a former State Guide Adviser. We all wish her well in her new role.

For some time, we have felt that so much more could be done to help our Local Associations, by visiting more of their District meetings, attending more Training Days and meeting more members. We feel that Local Associations are such a vital part of Guiding by the tremendous support they give to their respective Districts. With this in mind, we have created a new Headquarters appointment, that of Local Association Adviser. I am very pleased to announce that Mrs. Margaret Pennington has agreed to become our first State Local Association Adviser, her appointment to take effect from 1st August. Margaret has been active in the Kew Local Association for several years and will be finishing her term as President later this year. Some of you will remember her as Chairman of the State Local Association Conference held at Heidelberg last year. We are sure Mrs. Pennington will find her new venture rewarding and we wish her all the very best during her term of office.

Lysbeth and I attended the Trainers' Weekend at Belgrave when Trainers throughout Victoria came together for discussions on relevant matters. It was my first time at such a gathering and I found it most stimulating.

Second term is popular for Conferences and Lysbeth has already attended Local Association Conferences in the Otway Region and Mornington Peninsula Region.

With Mrs. Hartley Watson and Miss Barbara Allison I attended a reception given by the Victorian Government to celebrate Commonwealth of Nations Week in the State Government Offices. This was a most enjoyable evening in very pleasant surroundings.

At noon on the same day, flags of 27 Commonwealth countries were raised at a ceremony held in the City Square. Some of our Guiders were invited to take part in the



## REPORTING FROM RUSSELL STREET



### INTERNATIONAL ADVISER

We extend a warm welcome to Miss Wendy Swift, who will replace Mrs. Dwyer as our State International Adviser from 1st August, 1976. Her address is 2B Rubens Grove, Canterbury, 3126; telephone 82 6563.

Our thanks and congratulations go to Lesley for her enthusiastic leadership of the International Department during the last five years.

### LOCAL ASSOCIATION ADVISER

Of special interest to Commissioners and L.A. members is the announcement of a new appointment — an Adviser for Local Associations. Mrs. J. C. A. Pennington, of 28 Rowland Street, Kew, 3101; telephone 80 1440, takes office on 1st August and we welcome her most warmly to this new office. We are confident that Local Associations will grow and strengthen under her leadership and that L.A. members will be glad to have a special Adviser of their own.

### STATE ARCHIVIST

Another new appointment is that of State Archivist. We welcome Miss Mary Lambe, of 13 John Street, Kew, 3101; telephone 80 2242, who is now looking after our Archives. She is the person to contact if you require or wish to share information about the early days of Guiding here in Victoria.

A special vote of thanks is due to the Historical Records Sub-Committee who, under the umbrella of the Public Relations Department, have built up and cared for the records of our Guiding history, records that will gain in importance as the years roll by.

### CHIEF COMMISSIONER'S VISIT

Miss Mary Lambie, Chief Commissioner for Australia, will be paying an Official Visit to Victoria from the 2nd-8th September and we hope as many people as possible will meet or see her during this time. See the outline of her programme elsewhere in this 'Matilda' and note in your diaries appropriate dates.

### OPEN DAY FOR COMMISSIONERS

It is not too late to 'phone your name through to Headquarters if you would like to share in the Commissioners' Open Day and Division Commissioners' meeting on Tuesday, 20th July. Time: 10.15 a.m. (a cuppa at 9.45 a.m.) to 3.00 p.m. Lunch will be provided.

### CAMPING DEPARTMENT

**11th Australian Scout Jamboree** — Please note that there is still time for Guiders and Rangers to apply to help at the Jamboree, which is to be held at Dandenong from 30th December to 7th January. (See April and May editions of 'Matilda' for details.)

**Boomerang Camps** — June 'Matilda' will give you details of these special camps, which are to be held in January, 1977. Although the closing date for these camps is 14th July, there may still be places available if application is made immediately.

### INTERNATIONAL

**A Canadian Invitation** — Australia is invited to send eight girls between the ages of 14 and 17 years and one leader to an International Camp at Nova Scotia, Canada, in July/August, 1977.

The cost will be \$150 (Canadian), plus fares, and there will be a week's Home hospitality before the camp. Closing date for applications is 7th September, and Application Forms are available from the Secretary to Advisers on receipt of a stamped self-addressed envelope. Selection day for Victorian applicants will be 11th September.

### OLYMPIC BADGES

Olympic badges are now on sale through the Guide Shop, price 20c each. To avoid disappointment buy now — every Brownie, Guide and Ranger is sure to want one of these badges as a souvenir of this exciting event.

### ANNUAL RETURNS

Headquarters would like to express thanks to all members who sent their Annual Reports and subscriptions, and other monies, along the communication channels on time, thus enabling most Regions to have their Return into the office before the end of the financial year.

We would especially like to record our appreciation to the Local Associations throughout the State who responded magnificently to the request for annual subscriptions from individual L.A. members. Our sincerest thanks to all.



# TUNE IN ON CHANGE

## EXCITING NEWS — LONG AWAITED ANNOUNCEMENT

Our Movement is to have **FOUR AGE GROUPS**, each with its own program, within the **THREE** existing Sections.

For some time there has been a growing awareness throughout Australia of the need to re-arrange our age-groups. Each State has been experimenting with various groups; in Victoria we tried G.I.P.S. (Guides in Pilot Scheme) with the 14 to 16 year olds, and other exploratory plans were tried with the over 18's.

The results of these experiments, the evaluation of the Eight Point Program carried out by questionnaire last year, surveys of various sorts including one on why girls leave the Movement, and the findings of other youth groups, were all discussed at the Australian Sections/Training Conference in January. The result has been that the Australian Girl Guides Association has agreed that Sections will now operate within the following age groupings:—

Brownie Guides ..... 7 to 10½/11th birthday

Guides ..... 10½/11 to 14/14½ years

Ranger Guides ..... 14/14½ to 18th birthday

Rangers ..... 18 to 25th birthday

Each program is designed for a three to four year stay in a group before moving on to the next. Research shows that this smaller age span of girls get on well together and have common interests. Ten and a half year old Brownies coming into Guides will find a program more suited to their abilities; 14 year old Guides moving on to Ranger Guides will find the sort of activities they have been asking for but which the present Guide Company, also

serving 11 year olds, has not been in a position to provide; 18 year old Rangers, who are legally adults, will have an opportunity to do adult things without having to modify interests because the 14 and 15 year olds have to be included.

Only one group has a "new" program — the 18 to 24 year olds who, at this stage, are called **RANGERS**.

By the time a Ranger is 18 years old she is allowed to vote, drive and drink; she is possibly already a leader with a Brownie, Guide or Cub Unit; she is, in fact, an adult. Her needs are different from those of a 14 year old schoolgirl, her opinions are often loudly heard but not always heeded, so it is necessary that a flexible personal program for this group be evolved. An outline of this program will be published in next month's "Matilda".





## TUNE IN ON CHANGE

The present Ranger program, Handbook, uniform and the name **RANGER GUIDES** will be used by the 14 to 17 year olds. There is so much potential in the Ranger program and it waits to be developed by these younger girls and their leaders.

The G.I.P.S. showed how exciting a unit run with this age group could be. One girl's description of the type of leader she wanted was, "I expect a leader who becomes involved in activities with the girls; a leader who can communicate with and understand the age group of the girls and who becomes a friend; a leader who does not "knock back" the girls' ideas or enthusiasm and who will treat the girls in a more adult way than Guides."

Another described their program, "Our trip to the Zoo with children from Allambie was good and our venture to Michael Hunt's Health Club put us in good form. We had greater involvement with Venturers in football matches, socials and square dancing, and even invitations to go to canoeing and rock climbing. Camps were great too. At Tynong North we were really able to enjoy ourselves because we were all on an equal level with the two leaders. We were able to act around and carry on and everyone was great to be with."



In **GUIDES** the 12 and 13 year olds now get their chance to show they can run patrols if they are trained and supported by their leaders. In this smaller age range the younger girl's wishes will be heard and her interests met. She can have those games she likes but which bored the older girls; she can now have her chance to accept responsibility and to run some of the activities. These girls want to be useful. They like getting badges if they are assessed at a level compatible with their ability and span of concentration. Camp to them is an exciting challenge, and although the Guide Companies may miss the proficient 15 year old camper, the younger girls will still gain in discovering their own capabilities.

In recent years the numbers of Brownies going on to, and staying in Guide Companies has decreased. Enquiry shows this is too frequently because they have felt unwelcome and lost in the group of "big" girls. Now we will have Guide Companies which cater for an age range of 3+ years rather than of 5+ years.



**BROWNIES** are affected too. Surveys showed that the "peak" age in Packs is 9 years. This means that if Packs aim to suit the greatest number of their members, they will run most activities at the level of the 9 year olds. With Guide Companies now geared to the younger girl, 10½ year old Brownies will usually be better suited to move on to the Guide Company.

Let us look at how we can bring the change into effect.



## TUNE IN ON CHANGE

### WHAT DOES THE CHANGE MEAN?

Nothing will happen unless all Guiders are optimistic and determined to take advantage of the change.

Brownie Guiders, you must encourage each Brownie to go on to Guides as soon as she is capable of coping with the Guide program. Now that it is geared to a younger level, this is likely to be at an earlier age than before.

Guide Guiders, you have to decide whether to concentrate on Guides aged 10½-14, or work with the 14-17 year olds who will become Ranger Guides.

Ranger Guiders, some of your units will cater for the older girls and their activities, and your attitude towards them will need to change accordingly. Other units will be geared to the younger girls and will work to the present Ranger program. They will need Leaders to do things **with** them, while the older girls will require a Leader who is more of a consultant.

It means that a lot more Ranger Guide Units are needed. The change has been made for the benefit of the girls but, if there is no Unit for the 14-18 year olds, then there is no benefit. Start a new Ranger Guide Unit — divide the existing Ranger Unit in two — change one Guide Company into a Ranger Guide Unit — but get one.

### WHERE DO WE FIND THE GUIDERS?

1. Commissioners, do you already have a Ranger Unit and wonder how you split one Guider into two? If the Guider has an interest in the 14-17 year olds, let her get them going. The 18+ are adults and should be far more competent in "self programming". They need a "consultant", an "older ear" — so look for an ex-Guider or someone else who fits the requirement.

2. Do you have two or more Guide Units in the District? Why not make one a Ranger Guide Unit with the 14+ girls from each and let a Guider who works best for this age group become their Guider. The 10½ to 13 year olds will then make up the Guide Company(s) under the leadership of the remaining Guiders.

3. Have you a Guide Guider who runs a good program for the present older Guides? She is the ideal person to start Ranger Guides. Now look for a new Guide Guider. Perhaps the Brownie Guider who does well with the 10½ year old Brownies would like to change — you would then need to find the Pack a "new" Guider.

### HOW DO WE MOVE ON THE 14+ GUIDES?

1. Get a Ranger Guide Unit started. The girls have the energy, and the opportunities for things to do within that program are boundless. Just remember that the girls need a Guider who will "do it with them". The reward for the Guide Company will be some excited new 13 year old Patrol Leaders.

2. What happens to the Queen's Guide Badge? As an interim measure Victoria is accepting continuation of work towards the Queen's Guide Badge within the Ranger Guide Unit. See next "Matilda" for details.

### WHEN WILL WE CHANGE?

Start now. However, if you have to find Guiders or arrange for them to change around, form new Units or adjust the existing ones, then work towards bringing in the new age groups at the beginning of next year. By the end of 1977, we expect that the whole of Victoria will be operating within these new age groups, and our girls will be reaping the benefits that are to be gained from them.

To give Guiders and Commissioners a chance to **TUNE IN** on these new age groups, an evening will be held at Headquarters on **Tuesday, 17th August, at 7.45 p.m.** Join Section Advisers on that night to have your queries answered and learn more about these exciting happenings. To "book" to attend this "TUNE IN" night, send your name to our Secretary to Advisers.



## STATE COMMISSIONER'S LETTER

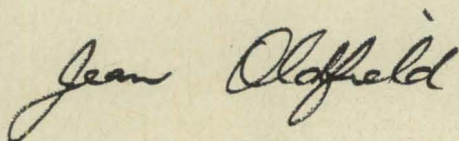
(Continued from Page 3)

ceremony and we were told at the reception in the evening how immaculate they looked in their uniforms and how well they carried out their task. Congratulations to these Guiders for a job very well done.

As I write, I am recovering from the experience of taking my first examination in almost 28 years and, believe me, it has been hard on brain and nerves. Having always wanted to do a St. John's Ambulance First Aid Course, I grasped the opportunity when my daughter's Ranger Unit arranged a Course and invited me to join them. Donning jeans to feel more "with it", but feeling very much like "Mother", with two Leaders and 15 Rangers, I found the Course absorbing and enlightening. I feel strongly that everyone should learn basic first-aid. You will be pleased to hear all passed the examination quite successfully. It was great to be made to feel so welcome by the Rangers too.

Until next time, have fun in all your activities.

With very best wishes,



### MINI OLYMPIC SPORTS For Handicapped Members

Extension Section will hold their Mini Olympic Sports at Huntingtower School, Mount Waverley, on Saturday, 18th September, from 10.30 a.m. to 3.30 p.m.

**Any handicapped member of an active unit, Brownie, Guide or Ranger, is welcome to participate.**

Please contact your nearest Extension unit or the Adviser, Mrs. D. Renard (857 9447).

## AUSTRALIAN GUIDE NEWS

It is pleasing to report special happenings for two former State Commissioners who are now active on the Australian and International scene.

**Mrs. J. R. Price** (State Commissioner 1963-1968) becomes Lady Price, her husband having been awarded a well-deserved Knighthood in the Queen's Birthday Honours List for his work with C.S.I.R.O. Lady Price, Australian Vice-President, is one of the key figures in World Guiding at the present time, being Chairman of the World Committee. She has the distinction of being the first Australian to hold this important office.

**Mrs. R. Renshaw Jones** (State Commissioner 1968-1973) is now Australian International Commissioner, an appointment she is well equipped to fill with her knowledge of State Guiding and her interest in International affairs, which partly stems from her husband's work as Consul-General for Iceland.

Victoria sends congratulations and best wishes to both of these special people.

### AN AUSTRALIAN MAGAZINE FOR BROWNIES, GUIDES AND RANGERS?

It has been suggested that Australia should produce a monthly magazine for Brownies, Guides and Rangers, possibly of 12 pages — four especially for Brownies, four for Guides and four for Rangers — with an annual subscription rate of \$4.00 or thereabouts.

- Would you welcome such a magazine?
- What type of articles would you want to have in it?
- What format would you like the best?
- Would you wish to be a regular subscriber?

Answers to these questions, together with any other thoughts people may have, are necessary if this idea is to become a reality. So, Guiders, please pass this thought to the girls in your unit. Ask them to think about it and talk about it — then send their comments to Victorian Headquarters so that these may be passed on to the Australian Sections Committee which is exploring the possibilities of an Australian Guide Magazine.



# A VERY SPECIAL VISITOR



## Who!

Chief Commissioner for Australia,  
MISS MARY LAMBIE.

## When!

from Thursday, 2nd September,  
to Wednesday, 8th September.

## Where!

Miss Lambie will arrive at Tullamarine Airport at noon on Thursday 2nd, and will be met by members from North Metropolitan Region and the Headquarters team.

In the evening she will be the guest of the Executive Committee and their husbands for dinner.

On Friday Miss Lambie will share with us the Opening Ceremony of the Mini Olympics and will visit the venues of each sport during the day, and again

on Saturday for the Finals and the Closing Ceremony.

On Sunday Miss Lambie will attend the Guides Own to be held in Alexandra Gardens at 9.30 a.m. (See special notice). Afterwards she will travel to Shoreham Campsite for a picnic lunch.

On Monday 6th, she will travel to Baw Baw Region, stopping on the way for morning tea at Warragul, and then on to Traralgon for lunch at 12.30 p.m. We do hope many members from Regions throughout Gippsland will take this opportunity to come to meet the Chief Commissioner.

If you intend coming to this Luncheon at Traralgon (cost of lunch 75 cents approximately) please contact Mrs. R. T. Porter, telephone Hazelwood North 66 1123, or Mrs. B. Carrington, telephone Traralgon 74 3573, to facilitate catering arrangements.

Open Day will be held on Tuesday, 7th September, at "Glenaoura Homestead", Broadford, from 11.00 a.m. to 3.00 p.m. for all adult members of the Movement to meet the Chief Commissioner. Please ensure your District is represented (Local Association members, Guiders, Commissioners and Trefoil) — bring your own lunch — tea and coffee provided.

Send applications to Headquarters, with stamped addressed envelope for Map and Name Tags, for this gathering no later than Monday, 23rd August.

The Ranger Section will be hostess to Miss Lambie during her visit on a date to be arranged.

For further information regarding the Chief Commissioner's visit please contact Audrey Austin, 2 Cavell Court, Beaumaris (telephone 99 2080).



## SEND THINKING DAY GREETINGS.

Thinking Day is the most obviously "international" highlight of the Guiding year. Units, Districts, Divisions, Regions — feature overseas Associations in their "thinking", but few of the girls make contact with our sisters in other countries.

It would be splendid to send greetings to ALL Guide Associations and, with your co-operation, we can achieve this. We need 98 individual companies, from all States (Guides, Lones, Rangers, but not Brownies at this initial stage) to undertake sending a Thinking Day greeting to ONE country of the World Association or one of the World Centres.

If your unit would like to participate in this scheme, please send the name of your unit, enclosing a stamped, self-addressed envelope for reply to Mrs. J. M. Kirkman, 161 Charman Road, Mentone, Victoria, 3194.

There may be one country which you would especially like to contact; if so, please specify this. Closing date is 31st August, 1976. Mrs. Kirkman's Australian Greetings Committee will then allot countries, giving priority to requests in early replies. You will be informed by 1st October of the name and address of the Guide Association allotted to you. This will give you plenty of time to prepare an interesting type of greeting card, which could go by surface mail and still arrive by 22nd February.

This should convey greetings from **the Girl Guides Association of Australia** — the form it takes is up to you, but you might like to include an outline map of Australia, showing the location of the States — maybe mentioning something about yourselves and about Guiding here.

If ALL countries are taken up by early requests, or your "preference" has already been allotted, you will be given first choice next year.

### REMEMBER

- A stamped-addressed envelope is **essential** for you to receive a reply.
- Closing date is 31st August, 1976.
- Your greetings **MUST** reach your contact by 22nd February, 1977.

I hope you will join in our world-wide chain of greetings.

*Charlotte Perslan Jones.*

International Commissioner.

## RANGER RAVE-ON CONFERENCE

Most of the seventy-two residents arrived on Friday night by bus at C.M.S. Centre, Belgrave Heights, for the Ranger Conference. Many day visitors came on Saturday and brought the total number of Rangers to 140.

A general good feeling was brought out by the discussions and all girls felt the conference was well organised and worthwhile attending.



One Ranger said she hoped the enthusiasm found at the conference would flow on throughout all sections of the movement. "We lived, learned and shared" and solved many problems.

Special thanks to the organisers, Camberwell Rangers, and speakers on "Mini Olympics" and "Handicapped Children".

Watch next issue for fuller details of our conference.

A. RANGER.

## A SPECIAL "THANK YOU"

Headquarters would like to thank publicly Boronia Rangers for their special "Good Turn" for the Movement.

They dreamed up the idea of giving the Association a Public Address system, then worked hard to raise the money and deliver the goods. Result — a Public Address system that will be a great help at all those events where amplifiers are necessary. Congratulations and thanks to Nan Squire and her Boronia Rangers.



# "NOWHERE TO HANG BUT ON NOWHERE TO FALL BUT OFF"

by Stephen Lake



You may have seen rockclimbers at Mt. Arapiles, the Grampians, Buffalo, Hanging Rock, Sugarloaf, Wilson's Promontory. Ropes, helmets, funny boots, and breeches. "Why," you might ask, "is he/she doing it? What pleasure in such danger? So reckless." And the answer is very hard to find. Try to answer what makes you participate in your activity. So I can only give a partial answer — an individual answer, for climbers climb for different reasons.

Here are some of the answers from climbers: 'Exciting.' 'A challenge.' 'It turns me on.' 'An inner feeling of glow and happiness.' 'An ego trip.' 'Competitiveness.' 'Don't know.' 'To get away from people like you.' I like climbing for similar reasons. The indescribable feeling of getting out of tight spots. Climbing a hard section that you thought that you could not get up. Adapting mind and muscles to awkwardness — to work with tension and strain, controlling fear. To know that all between you and a fall is your skill and ability. Sharing with someone, tied to the other end of a rope, the experience of the climb; alone at the end, yet together.

Warm rock and sunshine. Then off the cliff, the social life. Reminiscences around a campfire. Talk of climbs, of people, places, and plummets.

"But you could get killed. Climbing is dangerous." A common but false view. It can be dangerous, like driving a car. There are safety measures. A rope or helmet could be equated with a blizzard jacket or a life-belt or seat-belt. Occasional injury (and death) is the price we all pay for our recreation, for not living 300 feet down in a bomb shelter. Climbing is one way of living life to the full, of feeling alive.

(from The Hosteller)

Mount Waverley Rangers got "the feeling" recently when, with the assistance of 4th Waverley Rovers, who provided equipment, skill, instruction and encouragement, they scaled the walls of the "Flying Circus" granite quarry near Altona. Rock climbing clubs use this site as a training ground.

## RANGER DATES

- 9th July to 18th July: Ranger Week.
- 17th July: Ranger Guiders' Conference at Headquarters, 20 Russell Street, Melbourne, from 9 a.m. to 4.30 p.m.  
Ranger Week Dinner at "The Sheraton Hotel", Melbourne, from 7.30 p.m.
- 18th July: Rangers' Own (Finale for Ranger Week) at the Independent Church, Collins Street, Melbourne. Anyone interested is welcome to attend.
- 14th August: One-day Seminar — Theme: "Crisis Line", at Headquarters from 9 a.m. to 7 p.m. All Rangers welcome. Convenors — Ivanhoe Rangers (Invincible).
- 25th and 26th September: Canoeing Weekend — "Waterbourne", Ranger fixture to be held at Glengarry, via Traralgon. Overnight accommodation at "Illangi". Cost approximately \$5.00.



# Queen's Guide Ceremonies

During the Presentation of Certificates to Queen's Guides and Queen's Scouts held in the Ballroom at Government House, the following Message of Loyalty, written by Glenys Falconer of 2nd Belmont Company, was read by Susan Kellaway of 1st Morwell Company.

*"On this memorable occasion, we, the Queen's Guides of Victoria, pledge our willingness to be faithful and loyal servants to Her Majesty, Queen Elizabeth II. We hope that we will be able to maintain the standards laid down by our founder Lord Baden-Powell by being courteous, responsible, considerate and, most importantly, by extending the hand of friendship to those we meet in the hope that goodwill may spread throughout the world."*

Sir Henry Winneke, accompanied by Lady Winneke, presented the certificates to the Guides and Scouts and Mrs. Grimwade added her congratulations.

After the ceremony the Guides, their Leaders and parents enjoyed a wonderful morning tea at Headquarters.

KRISTEN GOUGE.

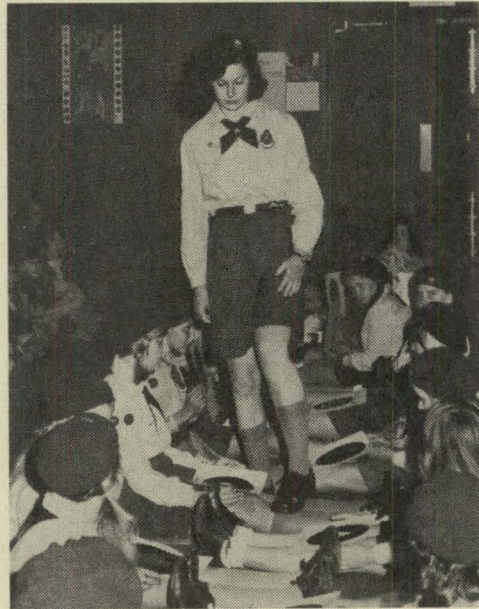
\* \* \*

1st Timboon Guide Alison Taylor received her Queen's Guide badge from her District Commissioner at a ceremony planned by her company and attended by her family and many friends.

The ceremony took the form of a Campfire.

A gold trefoil, with 33 candles, represented Alison's 33 badges.

As well as her Queen's Guide badge, Alison received a Certificate of Merit from the Shire President.



Another milestone in the history of Blackburn South District was reached when the District's first Queen's Guide badge was presented to Kristen Gouge of 3rd Company.

The District began with a Brownie Pack meeting in a friend's garage in 1966 and as it grew other units were formed. 3rd Blackburn South Company started in 1969.

As units met in a variety of halls and private garages it was difficult to get the District "feeling". This changed, however, when our own Guide hall was opened eighteen months ago.

Kristen transferred to Blackburn South from Benalla and has worked hard to gain her Queen's Guide badge. Her progress was noted by "climbing" a ladder of legs during the recent ceremony, attended by many of Kristen's friends and helpers.

D. CHATFIELD.





# VICTORIAN PATROL LEADERS' GATHERING

## GUIDE SECTION AGE CHANGE

To Guide Guiders:

With the change of age grouping in the Guide Section we now have opportunity to use the Patrol System with a group of girls closer to each other in age — and more like the "gang" on which Baden-Powell designed his patrols. Patrol Leaders will now be 13, or even 12 years old.

The Patrol System has always belonged to the Guide Section and when we were granted finance to help with the age changeover, we felt it should promote patrols — so we plan to hold a residential VICTORIAN PATROL LEADERS' GATHERING, 22nd-24th October, 1976.

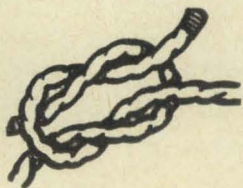
The purpose of the Gathering is to discover likes, abilities, needs and expectations of 12 and 13 year old Patrol Leaders in a Section serving girls aged 10½ to 14. We plan to circulate findings from the Gatherings, and any helpful guidelines, to every Guide Company in the State.

The Gathering is open to three Patrol Leaders (aged 12 or 13) and the Guide Section Representative Guider from each Region. Among other things our grant will subsidise travelling costs (car petrol or economy rail) for Patrol Leaders and Guiders from country Regions.

Cost per Guide or Guider for the weekend will be \$10.00, with participants arriving Friday night and leaving on Sunday afternoon.

Selection of each Region's three Patrol Leaders will be arranged by the Region Guide Section Representative. Method to be used depends on size of Region, but for most it will be at a games meeting. Encourage your Company to send one 12 or 13 year old Patrol Leader to try for Region selection.

YVONNE JAMES,  
Guide Adviser.



## FOR YOUR NOTICE BOARD

### VICTORIAN PATROL LEADERS' GATHERING

October 22-24, 1976

There is to be a weekend residential Gathering of selected Patrol Leaders aged 12 and 13, at the C.M.S. Conference Centre, Belgrave Heights, in October.

If you are a Patrol Leader and aged 12 or 13 in October, you can try to be one of the lucky three Guides to go from your Region. One Patrol Leader from each Company can apply for selection. Send the form below and A STAMPED ADDRESSED ENVELOPE to the Guide Adviser by 8th August. Details of selection arrangements will be sent to you.

If you are chosen to go from your Region it will cost \$10.00 and you will be one of 80 Patrol Leaders from all over Victoria. The Gathering is not just a holiday, you will be expected to join in the fun and activities and give your opinions on what you have been doing, what you would like to do and what you think should be done in your Patrol and Company.

### APPLICATION FORM

Detach/duplicate and send to Miss Y. James, Guide Adviser, 2/46 Fewster Road, Hampton, 3188, by 8th August, 1976. Please enclose stamped, addressed envelope.

Patrol Leader's

- Name.....
- Date of Birth.....
- Address.....
- Telephone Number.....
- Company.....
- Region.....

To be filled in by your Guider and  
Commissioner

We support the application of

(Patrol Leader's name)

to be considered for Region selection to attend the Victorian Patrol Leaders' Gathering.

.....Unit Guider  
.....District Commissioner  
.....Date



## BROWNIE GUIDE RIBBON OF GOLD

Brownie Guides are asked to participate in extending the "Ribbon of Gold" already started in various parts of Australia by planting trees and flowers with yellow tones of leaves or flowers throughout the State.

Trees will be distributed in August for each Brownie Guide Unit to plant in September. Metropolitan units will share 900 trees donated by the Natural Resources people and country units are to purchase trees from local nurseries. This will be organised through your Region. Brownie Guiders willing to help with purchase or distribution of trees are asked to contact their Region Commissioner as soon as possible.

Leaflets on tree planting hints have been supplied by the Forests Commission for distribution. In some areas, before planting trees, it may be necessary to obtain permission from local authorities.

The tree planting project will be financed from the Brownie Guide Section's portion of the special fund set up by Mrs Renshaw Jones and her Team when they completed their term of office.

You will hear more about our "Ribbon of Gold" in next "Matilda" and through your Region.

## BROWNIE GUIDE SECTION

A reprint of the Australian Brownie Guide Interest Badge Book is now available in the Guide Shop at a cost of 18 cents.

This revised edition has notes for parents, leaders and testers inside the front cover.

Alterations to note:

**Aboriginal Badge:** Name changed to Aborigine. Where the word "aboriginal" is used in clauses, it is now replaced by "aborigine".

**Animal Lover's Badge:** Clause 3 — "feed wild birds" deleted.

**Musician's Badge:** Clause 1 — list of books has been changed as books previously listed are unobtainable in some States.

**Skater Badge:** There is now a separate syllabus for Ice and Roller Skater.

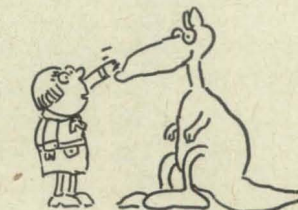


## WHAT EVERY CHILD NEEDS

All children need basic services — health care, clean water, good nutrition, education, training and welfare services. Too many of the world's children are denied these essentials for a constructive future and the United Nations Children's Fund (UNICEF) is paying particular attention to "What Every Child Needs" in its year-round help for developing countries and for Universal Children's Day on the fourth Wednesday in October — this year, Wednesday, 27th October.

Children's Day is educational — to draw the attention of the whole community to the special needs of children. It is recreational too — a day to rejoice in the individuality of every child and to link children everywhere in a world-wide "circle of friendship".

Leaders are cordially invited to note this international day in their diaries now and to write for posters and further information to: UNICEF Committee of Victoria, 49 Elizabeth Street, Melbourne, 3000. Telephone: 62 6255. Requests can be recorded now, and will not be overlooked, but please note that new material prepared for Universal Children's Day 1976 will not be available for despatch until late September.







# TRAINING PAGES

"When ere you make a Promise  
Consider well its importance  
And, when made,  
Engrave it upon your heart."

—(Girl Scout Songbook).

I would like to share a treasured experience with you. It is connected with the above song.

Several years ago, during a residential training at Britannia Park, our lovely Guide property at Yarra Junction, a Promise Ceremony was planned, and carried out, for a new leader.

The chosen spot was a sloping grassed bank with a backdrop of trees. Stars were shining overhead on this calm warm summer evening and we, the witnesses for the ceremony, were grouped like the formation of the stars in the Southern Cross. Our lighted candles glowing gently in the twilight.

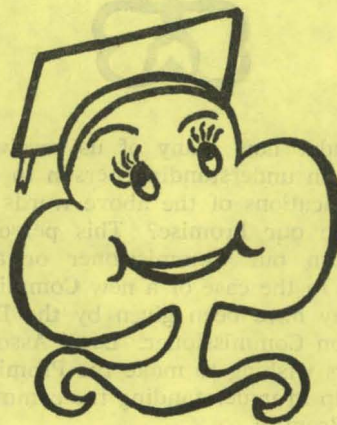


The leader had asked that she make her Promise to Norma, the Guider in charge of the training and, as is usual when a new member makes her Promise, all enrolled members took the opportunity to silently renew the Promise we had all **voluntarily** made as new members of the Movement.

The Promise made, the new member was led past each group of 'stars' who in turn extinguished their lighted candles. When all candles were out the singing of the song commenced and continued until all had dispersed.

It was a truly wonderful moment . . . there were over sixty people united in their belief in the rightness of the Promise. It is more wonderful to think that over seven million people spanning more than ninety countries have made a similar Promise.

I do hope **your** Promise Ceremony was as memorable and meaningful. (Sue asks "Would any of our readers like to share memories of their Promise ceremony?")





# PROMISE

At each Promise Ceremony the relevant Promise badge is received as the outward symbol of the Promise made.



Do you know:

1. What the trefoil indicates?
2. What the G.G. stands for?
3. What the star indicates?
4. What meaning the vein has?

If you are unable to answer these questions ask around . . . may be you will make a new friend in the process. (Page 21 Guide Handbook can also help.)

"I **PROMISE** that I will do my best:  
To do my duty to God,  
To serve the Queen and help other people,  
and  
To keep the Guide Law."

The wording of the Promise is the same, whether for a Brownie who needs to have it carefully explained to her, or for an adult about to become a member of our Movement who also needs help to think it out for herself.



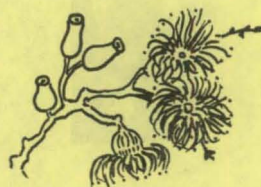
I wonder how many of us received the help of an understanding person to discuss the implications of the above words before we made our Promise? This person may have been our Commissioner or another Guider. In the case of a new Commissioner help may have been given by the Division or Region Commissioner. Local Association members wishing to make the Promise also need help in understanding the commitment of the Promise.

As Leaders we must be aware that not all people can make the Promise. For example "Duty to God" could not be promised by members of some political parties. "Duty to Queen (or country)" could not be made by members of some religious sects which do not pay allegiance to their country. These aspects should be carefully noted by new adult Leaders and care should be taken to make sure that prospective members are not led into making a Promise which they cannot keep.

As a Brownie Leader I consider it my responsibility to explain to **parents** of new members the implications of the Promise. It is then **their** decision as to whether they still desire their child to join the Movement.

From time to time we need to re-examine our own personal understanding and attitude towards the Promise . . . which includes the keeping of the Guide Law . . . so much depends on us for young people learn best from 'models', not from 'critics'.

The way our meetings are run — the tone we set — Leaders' loyalty to each other — our appearance, punctuality, patience, sense of humour, our sincerity and enthusiasm for living — our faith in God — our striving to improve ourselves. I find it helpful to let the girls know that we, too, find it difficult to keep our Promise, but remember that the Promise starts with "I Promise to do my best . . ." not to be perfect, for none of us is, but that we are trying and **WILL KEEP ON TRYING** to live according to the Promise.



## CONGRATULATIONS

Heartiest congratulations on being appointed members of their Region Training Teams to Mrs Loretta Porter — Otway Region; Mrs Betty Quirk — Barwon Region.



# PROMISE and LAW

At a training I attended many years ago I was handed the following for a personal appraisal . . . perhaps you may find it helpful.

## PROMISE . . . LAW

Have you recently made time to pray or read the Bible?

How much do you know about the obligations of those faiths different from your own?

How long is it since your Unit prayed for guidance in living the Promise?

Does your Unit have a prayer book? Who leads prayers?

Are you setting the example by showing respect for our country's traditions and laws?

Have you found that loyalties can clash in the most complicated way? What do you do when this happens?

Do you give your help to others in an unobtrusive way . . . or do you make sure everyone hears about it?

Have you made time to do some work for the community?

Do you always treat others' property as you would your own?

In any sport do you ever show ill humour?

Have you recently trained yourself in at least one practical way to be useful in an emergency?

Do your friends and acquaintances know their 'reputation' is safe in your hands?

To what or to whom do you owe obedience?

Do you willingly pass on your knowledge and experience?

Has anything you have done or seen made you anxious to preserve natural things for posterity?

Have you found time to finish any jobs you have started?

How many real friends have you made in the last 3-6-9 months?

Do you consider other people's feelings?

List the ways you have definitely improved your own standards or self control during the last 6 months.

Do you try to see both sides of the question before reaching a decision?

Has contact with others led you to discover some of the qualities a person needs before others will turn to her for help? What are some of these qualities?

Have you learned to appreciate your own gifts and not to envy others theirs?

Have you read the relevant chapters in the Handbooks on the Promise?

**"THE DISCIPLINE THAT COMES FROM WITHIN IS THE ONLY ONE THAT LASTS, NOT THAT WHICH IS IMPOSED FROM WITHOUT."**

—Baden Powell.

## DISTRICT MEETING DISCUSSION



Heard at a recent training:

A Guide arrived at her company meeting, she quietly told her Guider of the death of her best friend. May she say a prayer for her during company reflections? Guider replied, "Certainly", and made a mental note to discuss this with the girls responsible for reflections that night.

Only two other members of this company would have known the dead girl, but all accepted the prayers of one of their members, with concern and reverence.

Questions:

- What is the relationship between Guide concerned and her Leader?
- How does this Guide see herself in relation to the rest of the company?
- How do girls in this company look on their reflections?



## PRAYER IN THE UNIT

Prayer and worship in the generally accepted form may be foreign to many girls joining Brownies, Guides or Rangers. Once we as Leaders can accept this as a realistic fact, we are in a far better position to help the individual towards her development in both corporate and personal worship of God.

Often it is hard for a Leader not to be disappointed and disheartened when she has worked and planned towards a goal in spiritual growth, and the group, or the individual, falls short. District meetings must provide the support Leaders need at these times and particularly for the Leader who is working without assistance, or the new Leader who, when faced with a unit which has no background of worship, may easily feel overwhelmed by the task.

Guiding has a positive attitude to religion, but is non-denominational. This means inspiration can be drawn from all great religions of the world. There are many books available which provide material for use in units to widen the girls' understanding and appreciation of the beliefs and aspirations of others. A talk with your local librarian is sure to be very worthwhile and provide you with a knowledge of books which can be borrowed.

Discussions held with Brownies as a group, Patrol Leaders or Rangers, can provide the Leader with a very clear indication of how much help the group will need. An activity suggested in The Handbook for Guiders — Brownie Guide Section Page 37 called "Praying", could easily be adapted to all ages and could be a wonderful discussion starter, providing the Leader with a deeper understanding of each individual's concept of prayer. If discussion is being used, questions should be worded carefully, so the Leader will not need to do much talking, and the girls will not be in the position to make statements they believe the Leader wishes to hear. To stimulate discussion a picture is often a helpful aid.

If prayers are to be meaningful to the girls they must be lived as well as spoken. What is the point, for instance, of praying for "the sad and the sick" if we do nothing to help comfort the neighbour whose hus-

band is seriously ill in hospital. Prayers must be in the language we use every day, otherwise we can hide behind our ignorance of the meaning of the words we are using. It is easy to say, "forgive me for all my grievous sins", but much harder to pray, "forgive me for cheating Jane today". Why say "beseech" instead of "ask" or "repent all our iniquities" instead of "we are sorry for our sins"?

Prayers need to be simple in thought and idea, so all will understand, particularly with young girls; short, so attention will not wander. They should usually be closely connected with what the girls are doing and thinking.

Prayer for many comes easier with others and if, as youth leaders, we are aware that for many of our girls unit worship is their first spiritual experience, we will strive to make it meaningful for all.

Music provides an avenue of worship loved by all young people. The study of the words of songs often brings realization that many are prayers, and so the song takes on a new dimension.

In his book "The Hungering Dark", Frederick Buecher writes, "We are really alive when we love each other, when we look at each other and think, 'Grace, and peace be with you, brother and friend'. How concrete praying together is. One prays not for 'mankind' but for the needs we know in the people we know".





## BROWNIES LEND A HAND

Mrs. Miller has no family close enough to visit her on her birthday, so, for the past three years, 2nd Rushworth Brownie Guides have helped her to celebrate her special day — her 92nd, this year.



The Brownies also visit the local hospital at Christmas time and brighten the festivities with their guitars and carol singing.

WENDY JONES,  
2nd Rushworth Brownie Pack.

One of the Important Events  
to take place during  
the Chief Commissioner's  
Visit to Victoria

### A GUIDES' OWN

on **Sunday, 4th September,**  
at **9.30 a.m.**

For all Brownie Guides, Guides,  
Rangers, Guiders and their Families  
and Friends.

**Alexandra Gardens**  
(Five minutes walk  
from Flinders Street Station)

Come and join all your Guiding  
friends — old and new friends made  
at the Mini Olympics. Plan now to  
come together for this special and  
memorable occasion.

## BROWNIE REVELS

Brownies from Clunes Division recently spent an enjoyable day at Brownie Revels in a perfect setting under large shady trees at Victoria Park, Daylesford.

The theme was—A Trip Around Australia, and Packs participating represented the various States of Australia. Each group took its respective positions on a map of Australia outlined on the ground, then played games which represented each different State.

This interesting and educational day concluded with singing and afternoon tea served by Local Association ladies.

EDNA JOHNSON.



## PACK HOLIDAY:

During our Pack Holiday at Burnett Park, 1st Yallourn North Brownie Pack enjoyed games, picnic lunch, making flower arrangements, modelling with dough, taking part in a concert and dance night, collecting stones, an outdoor campfire and a barbecue tea to which our families were invited.

They had three special visitors during our holiday — a large fox and two wombats!

The only sad moment during the Pack Holiday was when we farewelled our Pack Guide, who has been with us for two years.

Brownies and Leaders all had a very enjoyable holiday and really learned to live with others.



Language is a wonderful thing. It can be used to express our thoughts, to conceal our thoughts, or to replace thinking.



# LOCAL



# ASSOCIATION SECTION

## THOUGHT FOR THE MONTH

Honesty may be the best policy, but it is tact that pays the dividends.

## MOTHERS MAKE THEIR PROMISE

Terang District Annual Meeting was highlighted by a very moving Promise Ceremony for several mothers of Brownies and Guides.

The girls led their mothers into the hall to the sound of "I Hear Footsteps", sung by the Guides. As they formed a horseshoe the Guides then sang the round, "Whene'er You Make a Promise". Each Brownie and Guide in turn took her mother to the District Commissioner and all saluted as each made or re-affirmed her Promise.

Candles were lit and in the darkened hall everyone sang "This Little Guiding Light". Each mother was presented with a Guide handkerchief as a memento of the occasion.

The Guide Company performed "Little Red Riding Hood" and then guests were invited to view a display of crafts made by the Brownies and Guides. This created great interest, and the girls all acted as hostesses to their guests.

## MORE FUND-RAISING IDEAS

### Opalwear

Hostess Parties arranged by Opalwear, specialists in opal and gemstone jewellery, have proved very successful in the past for many Guiding groups. Perhaps your Local Association would like to arrange a party on a weeknight or weekend. Further details from Wendy Caffyn on 846 1939.

### Metropolitan Research Pty. Ltd.

Services are provided to interested groups free of charge, so for an easy fund-raising activity a small attendance charge can be made towards Local Association funds, to those who come along to see demonstrations of this firm's client sponsors who present

their newest products for your comments and reactions. There is no selling or orders taken, and this new series promises to be even more popular than previous ones. Information can be obtained from Anne Collins at Metropolitan Research Pty. Ltd., 18-22 Collins Street, Melbourne, 3000 (telephone 63 2263).

## Hawksburn Arts Workshop

Fun and fund-raising can be combined in this large Workshop, which is situated in remodelled stables and dairy, almost 100 years old, at 4 Oban Place, South Yarra, near Hawksburn Station. Groups are invited to come on Friday or Saturday nights or Sunday afternoons to take part, under guidance of expert craftsmen, in working at pottery, painting, drawing, spinning and various other crafts. Funds can be boosted by auctioning finished articles. More details are available from Brian Duthie at the Workshop on 24 1532.

## CONFERENCE QUESTIONS

**Q.—Did Headquarters consider it a good idea to have Region Conferences close to the State Local Association Conferences?**

A.—Regions are free to choose the dates of their Region Conferences, but it is a pity if they are planned too close to State Conferences, whether they be for Local Associations, Guiders or Commissioners. This will be referred to the next Region Commissioners' meeting.

**Q.—Thinking Day Fund — How does it help the World Association?**

A.—The Thinking Day Fund is one of the main sources of income for the World Association — the other being the membership quota.

The Thinking Day Fund pays for trainers, promotion, visits of members of the World Bureau to member countries, assistance for development in member countries, for promotion of Girl Guiding and Girl Scouting wherever there is a need — and the call for help can be answered.



**Q.—**With the turnover of Guide Leaders, some Brownies and Guides never have a chance to go on a camp. Can a large camp be arranged for Brownie Packs and Guide Companies placed in this way? Is it so vital that Guiders have to have all this training? Y.H.A. and Church groups, etc., seem to manage well enough.

**A.—**Regardless of the turnover of Guide Leaders, there are opportunities for camping, e.g., the Camping Van, Division Camps, Region Camps, State Camps. (There is also the point that our camping Guiders have only a limited time available and they have their responsibility to their own Units.)

As far as children of Brownie age are concerned, the Brownie Adviser feels it would be quite impractical to try to arrange anything on a large scale, as children of this age are overwhelmed with anything 'large' — even Brownie Revels overwhelms some.

We consider Campcraft Training is **vital** as we are caring for other people's children.

**Q.—**We feel the Laundress Badge needs to be revised.

**A.—**As it is only two years since this Badge was revised, could more details be supplied as to how this should be altered, so that the suggestions may be discussed with the Guide Section Committee.

**Q.—**Can Water Safety be brought back in, as you cannot earn some of the swimming badges without water safety?

**A.—**Water Safety has always been of importance in all swimming badges and although there is no specific badge or clause pertaining to this, it is expected that Guides and Testers will bear this in mind.

**Q.—**Why have you asked for Guiders to be registered? We feel that Guiders give their "all" without having to pay more.

**A.—**There may be some confusion here between registration and membership fees. Guiders do not pay a registration fee, only the girls pay this when they are first enrolled. Regarding a membership fee, Guiders have not been asked to pay this, as we agree that they do give their "all" to Guiding.

**Q.—**Amount of help given to Guiders? Uniforms, travelling, etc. What do other Local Associations provide, initially, for their NEW Guiders?

**A.—**Presumably, this refers to financial help. The amount of help given to Guiders in the District depends largely on funds available. Usually, Local Associations contribute part of the cost of the uniform for a new Guider, although more financial Local Associations might pay for the whole of the uniform. The same should apply to the new Commissioner also, for her uniform. As well as this, many Local Associations give an annual allowance to each of their Guiders and Commissioner to cover telephone, postage, travelling, dry cleaning, etc. Hopefully, they will contribute towards the Division and Region Commissioners' expenses too. These amounts again depend on funds available.

**Q.—**Uniform — review shape of Guide blouse?

**A.—**This will be taken to the Uniform Subcommittee and possibly will be referred to the Guide Section Committee for discussion. However, if some Guides are difficult to fit, the materials and paper patterns of all pieces of uniform are available in the Guide Shop for the home dressmaker.

**Q.—**Why can you not advertise for Leaders on notice boards in Churches?

**A.—**You most certainly can. It depends though how you do it — do not put up a "wanted" sign, but do it in a more subtle way — Are you interested in . . . ? Do you want an exciting stimulating hobby? Have you talents you can share?

Some posters and pamphlets and advice on such a display are available from our Public Relations Department.

**Q.—**Could some relativity to Guiding be brought into the name of the Local Association?

**A.—**The official title of every Local Association is "The . . . District Girl Guides Local Association", which does, in fact, bring Guiding into the name. Perhaps the full title should be used more often than it now is.



**Q.—**If a girl who has gained her Queen's Guide and has the metal badge, has gone on to Rangers and then to become a Guider, would it not encourage more girls to become Queen's Guides if the Leader was to wear her metal badge? As she is a young Guider, this may inspire the girls more.

**A.—**It is not felt that the wearing of a metal Queen's Guide Badge by a Leader would encourage Guides to do this Badge. This decision is made by the individual girl because it is something which she wants to do, irrespective of the effort and time involved.

**Q.—**Some Local Associations have 'active' and 'non-active' (people who are only wanting to make a small annual donation of 75 cents) members. For which group would the proposed annual membership fee apply?

**A.—**The annual membership fee would apply to the number of members of the Local Association submitted on the District Annual Report — this is the number we pay a membership for. If you count them all, then you pay for them all. Perhaps the non-actives are supporters, not members, but they may prefer to pay a little more to be classified as a member. The 75 cents is either a voluntary donation or a required membership fee — this is for the Local Association to decide.

**This concludes questions from last year's Local Association Conference.**

## RECIPE CORNER

### Kartoffel Pfannkuchen (Potato Pancakes)

4 medium potatoes, 1 onion, 1 level teasp. salt, 1 egg, ½ cup flour (or enough to hold mixture together).

Grate potatoes and onion, mix well together. Add salt, well-beaten egg and flour to thicken mixture. Cook as pancakes and serve with stewed apples on top. Apple can be seasoned with lemon juice, nutmeg or cinnamon for extra flavour.

\* \* \*

Articles for this Section to be sent to Mrs D. O. Oldfield, 4 Embling Road, Malvern, 3144.



Dear Matilda,

Having just read the informative and interesting article in May "Matilda" — "The Quest for Leaders", I am reminded of how I felt when I read "Matilda" for the first time. It was way back in 1961 in Benalla, and I was amazed at the breadth of interest, friendliness of attitude and depth of some of the articles. I am still grateful for the continuing help I receive from "our" magazine.

I would like to add a comment or two to that particular article about the difficulty of finding suitable leaders. Over those years between 1961 and now, 1976, I have been occupied, at various times and in various places in Victoria, in such a quest. I have found that one of the most flattering experiences a person can have, whether he be child or adult, is to have a particular talent recognised. Any one of us is pleased to receive a genuine compliment. Therefore, to find leaders we must develop our own talent for looking at a potential leader through understanding eyes; through using a small store of discernment. It is so gratifying to have noted a child's or a woman's ability to do something well, asked her to help by showing her skill to others — and then to have her accept! We should not ask a person to come along to talk to the girls about First Aid if we know that she is a skilled needlewoman who has never attended a First Aid lesson in her life! She will decline, and well she might for we would have shown ourselves to be without sensitivity. The May article mentions that we need to show conviction and enthusiasm. I should like to add to that SINCERITY OF PURPOSE. May I suggest that we all — think about it?

BETTE McLAUGHLIN.





## MINI OLYMPIC GAMES



Are **YOU** coming to the Mini Olympic Games?

Please do — we need you.

After all, what is a grand spectacle without spectators?

As the games are to be held in school holidays, a visit to this exciting event would be a wonderful outing for all members of your unit who could cheer on your Region team. Perhaps whole families, complete with country visitors, could pack picnic lunches and come to join in the fun.

The Mini Olympic Games will be opened at 9.30 a.m. on 3rd September with a ceremony resembling a real Olympic Games Opening.

After that, events will commence at Olympic Park, the Olympic Pool and the Netball courts at Royal Park, and these will run concurrently until contests at each venue are completed.

Programs will be sold closer to September and will entitle you to admittance all or any of the venues as often as you like on Friday.

Souvenir Badges are now on sale (20 cents each) at Headquarters.

Finals of athletic and field events (admission 30 cents) commencing at 1 p.m. on Saturday will be followed by the Closing Ceremony, which promises to be truly spectacular. Be one of the thousands taking part.

Please come to the Mini Olympic Games — we know you will enjoy yourselves.



### FOR SALE

Two Ranger Guide frocks, jackets (Size 36). \$20 each.

Three Ranger Guide Hats. \$5 each.

Two Guide Skirts (Size 26). \$4 each.

Two Guide Blouses (Size 28 and 36). \$4 each.

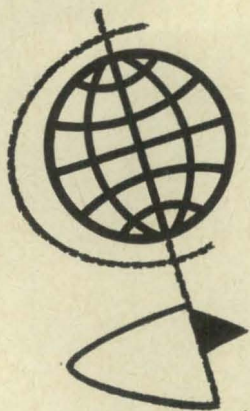
Apply Mrs. B. Maina, 391 2642.

### FARM NEWS

The monthly magazine of the Bharat Scouts and Guides has added a "Farm News" section to help members meet the nation's agriculture and nutrition needs. A typical recent issue carried brief articles on using zinc fertilisers to improve wheat yields and how to keep chicks healthy.

(from World Scouting Newsletter)





**Himalayan Club Trek:** December 1976/January 1977. Open to 20 students — 16½-18 years. Both boys and girls. Selection will be based on general background and an essay competition. Selection will be made early September. Apply DIRECT to Himalayan Club, P.O. Box 54, Mosman, N.S.W., 2088 (Telephone: Sydney 960 1677). Further information from Mr Adrian Cooper, 16 Alt Street, Bondi Junction, N.S.W., 2022. Telephone: 387 3475 (after hours).

Cost of the six-week trek from 17th December to 27th January, including fares, will be about \$1200. This trek will also include a "clean-up" in areas of the Himalayas at the foot of Mt. Everest. From Katmandu the party will trek along the classic route to the Mt. Everest base camp. Heavy gear will be carried by yak, but students will carry their own packs.

### **Brazil—Recreation Centre**

The Bandeirantes have traditionally helped with the fund-raising 'Providence Fair', held each year in Rio de Janeiro. In 1975 they decided on a different approach, having recognised the need for a recreation centre for small children. This they organised and widely publicised before the fair opened.

The Rangers and older Guides took turns in organising games, and telling stories. They also provided paint and putty with which the children were creative. The Bandeirante Recreation Centre stayed open during the four days of the fair (which was attended by two million people); it was so successful that many children left under protest!

### **Greek Guides sing at U.K. Folk Festival**

Eight blind Greek Guides travelled to England with their blind Guider and a sighted Guider to sing at 'Folk Fest '75', the seventh annual folk event organised by the Girl Guide Association of the United Kingdom with the Scout Association. 'Folk Fest', a review of Britain's leading Guide and Scout entertainers, was held this year at the Albert Hall in London. The eight Greek girls were one of fifteen acts in the show and won the audience over with their very professional presentation and beautiful national costumes.

While in London they went sightseeing, anxious that every detail be described to them and completed their trip with a visit to the World Bureau.

The girls are members of the 1st Extension Branch founded in 1950 in Athens at the School for the Blind of Kallithea. They regularly take part in excursions, camps, contests, and recently completed the Town Game, requiring them to find their way around Athens unaided.

### **Ghana—Literacy Classes**

In 1974 the Ghana Girl Guides Association were briefed by a team of Social and Community Development Officers on how to organise Literacy classes. Since then Guides in Kumasi have been holding evening classes for illiterates. Other subjects are also included in the classes, such as Cookery, Home Management, and Sewing.

### **India—Day Care Centre**

The West Bengal Section of Bharat Scouts and Guides opened their Day Care Centre in 1964. Since then the Centre has provided education, training and recreation for all types of mentally retarded or physically handicapped children, from 6 to 16 years of age. The children go to the centre for three hours each day, from Monday to Friday, where they are taught reading and writing, social habits, handicrafts and, of course, songs and games. They are regularly checked by doctors, and their diet is supplemented with nutritional food. They also receive physiotherapy.

Some of the teachers are Guiders and introduce Guide or Bulbul training when possible.

(from The Council Fire)



## AUSTRALIAN POST BOX

Dear Brownie Packs, Guides, Rangers and Leaders,

This is an **URGENT APPEAL** to all Australian members of the Guide Movement to extend friendship to those overseas. Some of these members have waited a long time for a pen friend in Australia.

We are hoping for a very quick response to this appeal.

Requests for Australian pen friends come from Canada (26), England (124), Finland (19), Holland (2), Hong Kong (1), Japan (1), New Zealand (6), Norway (1), Scotland (3), South Africa (12), Sweden (1), United States of America (52) and Wales (6), and include girls aged between 10 and 17 years, leaders, patrols and units.

I have received many letters asking why Australians are not interested in writing. I do not know why. Do you?

The cost involved in writing need not be great. Airmail letter forms are suitable and economical.

Some countries do not respond to Australia's requests. This may be due to disinterest, language barrier or such troubles as war, famine, disease or other national disasters. A request for ANY country rather than a specified one will always bring quickest results.

Be Prepared. If you are working for the Guide Knowledge Badge establish early a link in a country and make that country your choice for study. Last minute, specific requests are often difficult and sometimes impossible to fulfill.

There is no limit to the number of friendships you can have. Please write to your Post Box Secretary, Mrs. C. Blackburn, "Lowland Farm", P.O. Box 19, Macedon, 3440, to ask for a pen friend or pen friends and please especially remember the English girls and the 12 year olds. You will need to send your name, address, date of birth, name of your Unit and a stamped, self-addressed envelope for each request.

I hope to hear from you very soon,

C. M. WILLIAMSON,  
Australian Post Box Secretary.

## YABBIES

Pete was delighted when one of the town lads offered him a bag of yabbies.

As a keen fisherman he could use them as bait if they were not fresh enough for the table.

But imagine young Pete's surprise when the dozen or so yabbies he expected, turned out to be a forty pound bag of the creatures!

It was necessary to seek Dad's help to load the squelchy haul into the wagon and bring them home for inspection.

We were shocked to find the bag contained the results of some over zealous and unscrupulous person's work. He must have used a net to clean sweep some pond in the district.

The catch contained every size and sex, with no discrimination for the tiny inedible yabby or the egg carrying female.

Yabbies, like every other living thing on Earth, play their part in the complex ecological world. They help cleanse and balance the water world of ponds and dams by eating smaller animals and, in turn, themselves becoming food for larger creatures and water birds.

Somewhere around this area, the ecological balance will certainly be upset!

Our guides go yabbing in camp sometimes, but one of the first things they learn is to leave the little yabbies to grow and continue populating the pond and to return the female with her brood of eggs if she happens to take the line.

Fortunately we were able to transport the remaining live yabbies to a pond near our town where we hope they may survive and increase in number. Meanwhile let us hope the irresponsible actions of persons who overdo their fishing activities do not deplete still further the inhabitants of our local waterways.

ANNE L. FRASER.







## WANNON RIVER TREFOIL GUILD

During this, our first year as a Trefoil Guild, we have enjoyed hobby demonstrations, informative talks, perusing scrap books of Guiding in our area and films, when we also entertained the Guiders and Commissioners of the Division.

We have tried to repair a World Flag; we report Guiding activities in the Division to the press and we have helped travelling members to find Guiding contacts overseas.

D. HENNING.

## ARGANA TREFOIL NEWS

Argana members are pleased to announce that their table mats are now available and details can be obtained by ringing or writing to Mrs May Townsend, 843 Ballarat Road, Deer Park (telephone 393 1020).

Argana thanks all who have shown interest in its projects and hopes they will like this new one.

—M.T.

---

## FRIENDS OF MATILDA

Matilda has many friends who help her on her way each month.

Folk like you send news and items of interest to be shared, through her pages, with others.

Some helpers are responsible for typing, photographs and illustrations, while others again, often Local Association members, come into Headquarters on the second Tuesday of each month to wrap and bundle her up for postage. (If you or your Local Association would like to become a helper at this stage, Mrs. Jean McKechnie, at Headquarters, will be delighted to hear from you.)

There is one other very good friend of more than thirty years who gives Matilda that final push on her way to the Post Office.

Mrs. Mollie Stillwell, home maker, television actress and poetess, describes the part she plays in the Matilda saga in a verse she has written especially for us.

Mrs. Stillwell took a well earned "day-off" in June — she attended a conference of writers and poets in the United States of America.

### "MATILDA" WALTZES ON

The second Wednesday of the month —  
be it rain, hail, sleet or shine,

I'm off to "waltz Matilda", which is  
packaged very fine

In bags of blue with letters gold — "Girl  
Guides" is what it says —

And Oh! what fun I sometimes have on  
these exciting days!

Headquarters has a loading bay I make —  
just when I can.

One day it was two hours or more before  
in there I ran.

The hazards of the City pile upon me by  
the score

But dear "Matilda" gets away, just as in  
days of yore.

At Post Office Bulk Postage — if I'm a  
little late

I'm dodging out and round about — and  
trusting well to fate

That I'm not in the path of these great  
trucks that take the mail

Which shoots down sloping slides they  
must back under — without fail!

"Matilda" finally "makes it" — and as she  
gets away

I breathe a sigh of great relief that we have  
won the day!

Mollie Stillwell.



# HABITAT

## United Nations Conference on Human Settlements

### Today:

- millions of inhabitants of towns and cities of the world live in over-crowded conditions in slums and squatter settlements, deprived of basic facilities and services;
- millions of people living in rural areas are in need of food, medical assistance, jobs, education and transport;
- the crime rate is rising the world over.

### Tomorrow:

- the world's population will double by the end of this century to exceed 6,000 million people;
- most of these new millions will live in the cities which yet need to be built;
- these people will require houses, schools and hospitals, transport and communication, churches, libraries, parks and sports-grounds;
- they will need food, water and energy;
- they will need employment.

Can the citizens of today's world ensure that their children and grandchildren will live a dignified existence in the year 2000? Can the quality of human life be protected and maintained?

These and other questions were discussed in Vancouver, Canada, in June by HABITAT, the conference on human settlements, probably the largest meeting ever held by the United Nations. This event brought together policy-makers, planners, scientists, technicians, journalists and a very large number of representatives of non-governmental organizations. A special exhibit on human settlement problems and solutions throughout the world was prepared; this will later be made available, upon request, to schools, museums and official and private organizations.

The orientation of HABITAT differed from that of other conferences and its emphasis was not only on the definition of problems but on solutions and examinations of successful methods and techniques.

Girl Guiding/Girl Scouting as an educational movement concerned with the development and well-being of an individual will certainly find the conference material of use when preparing future programs. Our Movement reaches all human settlements; large cities and small towns, rural villages and refugee camps, all the focus of HABITAT attention.

(From The Council Fire)

---

### MARYVALE NEWS

Two proud grandmothers had the pleasure of joining in ceremonies at Maryvale Guide Hall. Region Camp Adviser, Mrs. Eve Graham, took part in the Promise ceremony of her grand-daughter Kim Graham, Alison Felmingham and Karen Ramselaar.

Later, Guide leader, Mrs. Mary Brown, presented the Queen's Guide badge to her grand-daughter, Judy Bell, and Dianne Brenton received her Queen's Guide badge from her former leader, Mrs. Joy Murfett.

### RAYMOND ISLAND CAMP

Patrol Leaders and Seconds from Paynesville and Bruthen companies camped with their leaders at Miss Jermyn's property on Raymond Island. Arriving at dusk, we set up camp by lantern light.

Highlights included a hike along the beach and barbecue lunch, and, after tea, a real campfire beside Lake King.

Guides Own completed an enjoyable weekend and we hope to go camping again soon.

WENDY J. MOON.



# From the **GUIDE** **SHOP**

## Camping and Bushcraft:

Are You a Camper? Hints on the Camper Badge .....	30c
Off to Camp — The Patrols Own Camp Book .....	85c
Let's Go Camping .....	90c
Camps and Holidays .....	\$1.10
Pack Holidays .....	55c
Camp Cooking .....	\$1.10
The Quartermaster in Camp (1974 revised edition) .....	35c
Camp Prayers for Guides (reprinting) .....	—
Camp Devotions .....	\$2.25
Safety in Adventure Activities .....	\$1.25
Bush Walking and Camping .....	\$1.00
Be Expert with Map and Compass — The Orienteering Handbook .....	\$3.95
Maps — How to Read and Make Them .....	65c
Girl Guide Knot Book .....	\$1.50
Clouds, Wind and Weather .....	35c
Understanding Weather in Australia .....	75c
Stars of the Southern Hemisphere .....	45c
An Easy Guide to Southern Stars .....	\$1.00
Bushcraft Handbooks —	
Campcraft .....	55c
Firemaking .....	55c
Knots and Lashings .....	55c
Huts and Thatching .....	55c
Time and Direction .....	55c
Food and Water .....	55c
Trees of Victoria .....	\$1.25
Periwinkle Guides —	
Australian Bushcraft .....	\$2.90
Australian Eucalypts .....	\$2.90
Australian Insects .....	\$2.90

## Gould League Birds of Victoria —

Urban Areas .....	\$2.00
The Ranges .....	\$2.00
Ocean Bays and Beaches .....	\$2.00
Inland Waters .....	\$2.00
Dry Country .....	\$2.00
Rare Species .....	\$2.00
Saving Our Wildflowers .....	\$1.85
Saving Our Wildlife .....	\$1.85

## NEW ITEMS:

Book of Hymns (Published by Girl Guides Association of New South Wales) .....	\$1.55
Sing Up! Brownies (Words for well-known tunes) .....	50c

## ALTERATIONS TO PRICES:

Australian Brownie Guide Interest Badges Book, Revised 1976 Edition .....	18c
Patrol Roll and Subscription Books .....	17c
Semaphore Charts .....	30c

## Have You Bought These Yet?

Irene Fairbairn Badge .....	10c
Get Moving Badge .....	10c
Leader's Workbook .....	\$1.20
Cover for Leader's Workbook .....	\$1.50



## PHILLIP ISLAND FARM HOLIDAYS

Spacious attractive surrounds, beach-front, horse-riding, hay-rides, animals, etc. 4 new log cabins. Recreation hall. Families, schools and groups. Telephone Mrs. Jeffery on (059) 56 7288.

## DANDENONG REGION CAMPSITE

### "Kooronga"

This campsite will be closed from 5th September, 1976, until 1st March, 1977, due to occupancy by Australian Scout Jamboree personnel.

## SCOUT/GUIDE LEADERS' FRIENDSHIP GROUP

Our Friendship Group meeting in June at Guide Headquarters was a great success. Two members showed films of their recent European trips.

Our group will now meet regularly at Guide Headquarters and details of our coming attractions can be obtained by telephoning Jean Parkin (729 7714) or Ern. Penwarn (57 3975).

\* \* \*

The longest journey must begin with the first step.



## FETE

A tall, slim girl, in Guide uniform and with long dark hair tied back in pig-tails, leaned over a counter piled high with large round pumpkins, freshly washed carrots, beetroot, lemons, bright red apples, bottles of jams and pickles, to offer her goods for sale.

Nearby stood another counter, this time piled with surfie beads, dolls, stacks of comics, toy frogs stuffed with bird seed, and other handcrafts. People grouped around it compared their money with the prices and began bargaining. Opposite small groups of children stood gazing longingly at plates of chocolate, strawberry and cream cakes, dishes of honey coloured toffees, biscuits, marshmallows and coconut covered balls of chocolate. At the end of this counter an "Apple Bobbing" contest was in full swing. Contestants opened their mouths to try to bite hold of an apple, but they more often received a mouthful of water instead.

A black-haired doll sat with her owner while people tried to guess her name and a lucky dip was surrounded by children pulling out chocolate frogs, pens, coloured pencils, biscuits, toy cars, plastic animals, etc. A coconut shy was also operating. Dogs of all kinds, a black and white cat, and a piebald pony were entered in the pet parade. "Basil" was voted the most popular dog. The best behaved pet was "Kitty-alias-Mog", and Rastus was the pet most like his owner, while the most obedient dog was Vikki.

This was 1st Hazelwood Guide Company's April Action, and thanks to our parents' and friends' support we raised more than \$90.00.

WENDY MILDENHALL,  
1st Hazelwood Guide Company.



It is prosperity that gives us friends, adversity that proves them.

JULY, 1976

## STOP PRESS . . .

The following note has just reached us from our World Traveller.

Dear Everyone,

Fred and I have just spent a wonderful time in Cuernavaca where Our Cabana is. We stayed at Las Mananitas — heaven! Old hacienda buildings with gorgeous gardens, birds and white peacocks roaming round the plantations. We ate outside, the menu brought to us on a large blackboard, and truly superb food. Fred learned about the place from a Mexican who was about to spend his honeymoon there — and I can understand why!

We spent the afternoon at Our Cabana. What a great thrill to see the front door with its enormous brass World Badges and the garage doors with many smaller badges. It was Maria Laura Avina's (Guider-in-charge) day off and Robyn (Australian) had gone too, but we were shown around by Maria Laura's Assistant. A magnificent spot — all the buildings set in lovely gardens. A session was due to start the following day so it was very neat and tidy. I can imagine the atmosphere when full of Guides and Girl Scouts and Leaders from other countries all working together and relaxing in the beautiful gardens.

Just before we left Maria Laura and Robyn returned and we had tea with them. It was nice to see Maria Laura again (I had met her at the World Conference) and Robyn is very pleasant company. A N.S.W. Guider is taking a group to a session in 1977 — I talked to them about the possibility of taking an all Australian group some time. It would be most exciting if we could manage it. I have some notices of workshops being held in 1977 which may attract some of our older members — I would think it would be well worth every peso spent!

Love to you all.

JOAN E. GRIMWADE.



# TRAINING CALENDAR

**COMMISSIONERS AND UNIT LEADERS** with the necessary experience are welcome to apply for ANY training. Applications should be sent **prior to the closing date** and be **accompanied by the training fee and a stamped self addressed envelope**. Early application for all trainings is recommended.

## Stage 1 Training:

**Canterbury** — Weekends 18th-19th September and 16th-17th October — time 10.00 a.m. to 4.00 p.m. Applications to Training Department, Guide Headquarters by **31st August**.

**Headquarters** — Weekends 11th-12th September and 16th-17th October — time 10.00 a.m. to 4.00 p.m. Applications to Training Department, Guide Headquarters by **24th August**.

**Wangaratta** — Weekend 11th-12th September — time 10.00 a.m. to 9.00 p.m. Saturday and 9.30 a.m. to 5.00 p.m. Sunday. Applications to Mrs D. Hamilton, "Hamilton Park", South Wangaratta, 3677 by **23rd August**.

## Stage 2 Training for Warranted Leaders:

Note: Stage 2 training is aimed at helping you directly with your leadership role. Please assess your needs and list them on the application form.

**Creswick** — Weekend 25th-26th September — time 10.00 a.m. to 9.30 p.m. Saturday and 9.30 a.m. to 4.30 p.m. Sunday. Note: Please bring cut lunch, all other meals provided. Applications and \$5.50 training fee to Mrs. G. Platt, Lot 109 Beresford Crescent, Darby via Bachus Marsh, 3340 by **3rd September**.

**Euroa** — Weekend 25th-26th September — time 10.00 a.m. to 8.30 p.m. Saturday and 9.30 a.m. to 4.30 p.m. Sunday. Applications to Mrs. M. Gorman, 33 Batten Street, Seymour, 3660 by **3rd September**.

**Headquarters** — Monday 6th, 13th, 20th, 27th September — time 10.00 a.m. to 3.00 p.m. Applications to Training Department, Guide Headquarters by **20th August**.

**Korumburra** — Weekend 2nd-3rd October — time 10.00 a.m. to 8.30 p.m. Saturday and 9.30 a.m. to 4.30 p.m. Sunday. Applications to Mrs. J. Gaudion, 32 Blackmore Avenue, Leongatha, 3953 by **20th September**.

**Macarthur** — Weekend 23rd-24th October — time 10.00 a.m. to 8.30 p.m. Saturday and 9.30 a.m. to 4.30 p.m. Sunday. Applications to Mrs. F. Jervies, "Karingal", Hamilton, 3300 by **1st October**.

**Shepparton** — Tuesday and Wednesday 28th-29th September and 19th-20th October — time 10.00 a.m. to 4.00 p.m. Applications to Mrs. M. Murphy, 73 Balaclava Road, Shepparton, 3630 by **7th September**.

## Pack Holiday Training:

**Headquarters** — Thursday 14th, 21st, 28th October — time 10.00 a.m. to 3.00 p.m. Applications and \$2.00 training fee to the Training Department, Guide Headquarters by **23rd September**.

## Campcraft Training:

**"Thorntons" Kanya via Stawell** — Weekends 31st July-1st August and 11th-12th September and 16th-17th October — time 9.30 a.m. Saturday to 4.30 p.m. Sunday — training fee to be advised. Applications to Miss D. Pearce, "Edgbaston", Donald, 3840 by **16th July**.

**Rochester** — Weekends 7th-8th August (indoor) 11th-12th September, 9th-10th October and 13th-14th November. Further information available from Mrs. M. Murphy, 73 Balaclava Road, Shepparton, 3630.

**Box Hill North** — Saturday, 7th August — 9.00 a.m. to 4.00 p.m. at Koonung Guide Hall, Ross-trevor Parade, **plus** residential weekends — 18th-19th September at Donvale, 23rd-24th October at Wattle Glen and 20th-21st November at Donvale. Note: Times and cost of weekends to be advised. Applications and \$3.00 to be sent to Mrs. F. Ludbrook, 5 Curnola Avenue, Doncaster, 3108 by **30th July**.

## Residential Training Week:

**Britannia Park, Yarra Junction** — Date 23rd-29th August — Subjects to include Stages 1 and 2, Pioneering and Orienteering, Learning Games, Ceremonial and Creativity. Note: Indoor accommodation only. Applications and \$32.00 training fee to the Training Department, Guide Headquarters by **19th July**.

## Bushcraft Tour:

Date — 28th August to 4th September. Tour will include visits to Barmah Forest and Hattah Lakes. Cost — approximately \$80-\$85. Application forms available from Training Department, Guide Headquarters. Closing date **19th July**.

## Special Subjects for Ranger Guiders:

**Headquarters** — 7th-8th August — time 10.00 a.m. to 4.00 p.m. Applications (including requests, \$1.50) to be sent to the Training Department, Guide Headquarters by **19th July**.

## Gourmet and Bulk Cooking With a Difference:

**Y.W.C.A. Melbourne** — Weekend 18th-19th September — time 10.00 a.m. to 2.00 p.m. Applications and \$6.50 fee to the Training Department, Guide Headquarters by **26th August**.

## Q.M. Workshop:

**Wodonga** — Weekend 30th-31st October — time 9.30 a.m. Saturday to 4.00 p.m. Sunday. Further information available from Mrs. D. Hamilton, "Hamilton Park", South Wangaratta, 3677.



## APPOINTMENTS AND WARRANTS

A warm welcome is extended to the following:

### Division Commissioners:

Mrs. G. R. Dryden, Wimmera East; Mrs. A. E. Huxtable, Knox; Mrs. E. H. Parker, Nunawading/Mt. Pleasant.

### District Commissioners:

Mrs. W. J. Day, Corryong/Walwa; Mrs. I. C. Chanter, Violet Town; Mrs. J. B. J. Webster, Nagambie; Mrs. J. McRae, Caramut; Mrs. R. G. Todd, Sunshine; Mrs. T. Tuck, Grantville; Mrs. S. F. Brownless (Acting), Hobson's Bay; Mrs. I. J. Blake, Edenhope.

### Ranger Guiders:

Mrs. F. J. Moyle, West Waverley; Mrs. K. W. Reeves, Traralgon

### Guide Guiders:

Mrs. B. Saville, 1st Footscray; Mrs. P. Tomlinson, 1st Katandra West; Mrs. K. N. Curtin, 5th Wattle Park; Miss J. M. McDonald, 1st Underbool; Mrs. L. Merritt, 1st Ocean Grove; Mrs. R. L. Collins, 1st Mornington; Mrs. J. Bergmeier, 1st East Loddon; Miss N. Netherway, 1st Balwyn; Mrs. L. Sherwood, 1st Laverton; Mrs. M. Van Heeswyk, 1st Boronia; Mrs. D. Carthy, 4th Boronia; Miss R. F. Poppins, 5th Mitcham; Mrs. C. G. Anderson, 1st Broadmeadows West; Miss M. Simmonds, 1st Drouin; Miss K. Mowle, 1st Plenty; Mrs. D. H. Matthews, 2nd Rosebud; Mrs. A. Flintham, 1st Noorat; Mrs. G. Smith, 2nd Greythorn; Mrs. J. R. Arnold, 1st Upper Ferntree Gully.

### Assistant Guide Guiders:

Mrs. C. F. Rodger, 1st Elliminyt; Mrs. R. J. Harborow, 1st Ferny Creek; Mrs. N. F. Holliday, 1st Wattle Park; Miss S. Jenvey, 1st Swan Hill; Mrs. J. C. Symons, 1st Mortlake; Mrs. B. D. Hilditch, 3rd East Doncaster; Mrs. M. Fewster, 5th Beaumaris; Mrs. H. Van Veenendaal, 1st Balwyn; Mrs. J. Gardner, 2nd Bentleigh; Miss L. Gibson, 1st Bentleigh; Mrs. G. W. McLean, 2nd Puckapunyal; Miss M. Spratling, 1st West Heidelberg.

Except for articles where copyright restrictions are indicated, material in "Matilda" may be reprinted in Guide and Scout magazines without prior permission. A credit line would however be appreciated.

## Brownie Guiders:

Mrs. H. Walker, 1st Marnoo; Miss R. L. Saville, 3rd Footscray; Mrs. B. L. Myers, 2nd Shepparton South; Mrs. S. I. Hutchins, 1st Dunkeld; Mrs. A. Butler, 1st Bendigo South; Mrs. L. M. Johnston, 2nd Bendigo; Mrs. F. N. Black, 3rd Morwell; Mrs. G. E. Howell, 4th Mt. Waverley; Mrs. A. E. Watson, 1st Springfield; Miss K. Borgmeyer, 2nd Kilsyth; Mrs. H. R. Earl, 3rd Traralgon; Mrs. A. T. Mason, 2nd Doveton; Mrs. R. L. Hutchinson, 2nd Shepparton; Mrs. H. J. Laird, 1st East Loddon; Miss J. Blythman, 1st Docheater; Mrs. J. Hammond, 3rd Maryvale; Mrs. E. N. Millar, 1st Sunshine; Mrs. B. J. Thornton, 2nd Croydon North; Mrs. C. J. Williams, 2nd Puckapunyal; Mrs. M. J. Wachett, 1st Warracknabeal; Mrs. H. Robinson, 2nd Edithvale; Mrs. V. Foenander, 1st Chelsea.

### Assistant Brownie Guiders:

Mrs. I. J. McCartin, 3rd South Shepparton; Mrs. C. Porter, 2nd South Oakleigh; Mrs. H. J. Hodgson, 1st Dunkeld; Miss H. Robinson, 1st Merrigum; Mrs. D. W. Berryman, 2nd Mt. Waverley; Miss G. Bunstan, 2nd Underbool; Mrs. J. Milligan, 1st Kensington; Mrs. A. Bright, 3rd Boronia; Mrs. J. R. Brien, 2nd Puckapunyal; Mrs. G. P. Pritchard, 2nd Lower Plenty; Miss J. M. Lee, 1st Noorat; Mrs. J. Hauenstein, 1st Leopold-Wallington.

## REGISTRATIONS:

Box Hill North Division Rangers (2).

## RESIGNATIONS AND RETIREMENTS:

We acknowledge with gratitude the services given by the following, whose Warrants have been returned:

### Division Commissioner:

Mrs. K. A. Way, Mitchell.

### District Commissioners:

Mrs. P. G. Challen, Red Hill; Mrs. S. A. Unthank, Langwarrin; Mrs. K. J. Jamieson, Dareton, N.S.W.; Mrs. M. A. Whitmore, Morwell; Mrs. A. E. Bazeley, Nagambie; Mrs. J. Seebach, Hobson's Bay.

### Guide Guiders:

Mrs. M. Pethebridge, 1st Mansfield; Mrs. C. Gringhuis, 4th Boronia; Mrs. F. O'Sullivan, 1st Stawell; Miss G. P. Robinson, 2nd Oak Park; Mrs. W. Fraser, 1st Terang; Mrs. L. F. Huon, 1st Heatherdale; Mrs. N. A. Barnes, 1st Kyneton; Mrs. C. Prewett, 3rd Geelong West; Mrs. D. Morris, 1st Blackburn South; Mrs. R. Trembath, 1st Plenty; Mrs. B. Whitta, 2nd Fitzroy.



### Assistant Guide Guiders:

Mrs. D. H. Matthews, 1st Rosebud; Miss K. Mowle, 1st Plenty; Miss N. Netherway, 1st Balwyn; Mrs. D. Carthy, 4th Boronia; Miss M. Simmonds, 1st Drouin; Mrs. A. J. Coleman, 2nd Maffra; Miss W. Smibert, 7th Malvern; Mrs. C. Traeger, 1st Thorpdale; Mrs. M. B. Legg, 2nd East Doncaster; Mrs. A. McHardy, 1st Plenty.

### Brownie Guiders:

Mrs. B. Saville, 3rd Footscray Mrs. C. H. Crocker, 1st Merrigum; Mrs. B. Chalmers, 1st Whittlesea; Mrs. C. Miller, 2nd Doveton; Mrs. N. R. Robertson, 1st Beaumaris; Mrs. H. A. Cornwall, 1st Thorpdale; Mrs. E. McCormack, 4th East Doncaster; Mrs. G. Rudd, 1st Swan Hill; Mrs. D. F. Rooks, 2nd Heatherdale; Mrs. W. O'Hoy, 2nd Bendigo; Mrs. D. G. Boak, 1st Mt. Clear.

### Assistant Brownie Guiders:

Mrs. J. G. Abraham, 1st Terang; Mrs. H. M. Gunn, 1st Thorpdale; Mrs. R. H. Montgomery, 1st Corryong; Mrs. H. Mercer, 2nd Bentleigh; Mrs. A. J. Smith, 2nd Werribee; Mrs. F. N. Black, 3rd Morwell.



### Our Cover

Birthday present for Matilda is a new cover design. Special thanks to Mr. G. Shephard, Mr. G. Thomopoulos, Brownies, Guides and Rangers from all parts of Victoria.

### CONGRATULATIONS to the recipients of the following:

#### Guiders Long Service:

(20 years) Mrs. D. Cattnach, Cardross; Mrs. M. Linton, Dunolly; Mrs. M. Boyle, Rosanna; (10 years) Mrs. N. F. Darby, Wattle Park; Mrs. A. Cocks, Wattle Park; Mrs. L. Asbury, North Fawkner; Mrs. P. Browne, Shepparton; Mrs. S. Charman, Doncaster; Mrs. J. McIlwain, Eltham; Mrs. P. E. Simkiss, Rosanna; Mrs. L. Parker, Cowes; Mrs. G. Andrew, Edithvale; Miss W. Smibert, South Yarra; Mrs. M. Gardiner, Armadale; Mrs. D. Clark, Wantirna South; Mrs. N. Squire, Boronia; Mrs. M. Caldwell, Glen Iris; Mrs. T. M. Adams, Nathalia; Mrs. J. A. Bennett, Croydon; Mrs. B. Cook, Ensay.

#### Local Association Long Service:

(20 years) Mrs. A. Kemp, Dunolly; Mrs. C. E. Hall, Dunolly; Mrs. E. Weekes, Dunolly. (10 years) Mrs. J. M. Parker, Colac; Mrs. A. L. McGrath, Colac; Mrs. D. Westwood, Colac; Mrs. H. Bellchambers, Colac; Mrs. D. R. Tilley, Wattle Park; Mrs. P. Fitzgerald, Geelong; Mrs. A. C. Taylor, Alphington.

#### Combined Long Service:

(10 years) Mrs. P. Cash, Edithvale; Mrs. M. Sutherland, Grantville; Mrs. J. Green, Kernot; Mrs. S. Kirkham, Harkaway; Mrs. B. Cox, Doveton; Mrs. K. H. Day, Highton; Mrs. H. Morton, Bentleigh; Mrs. M. R. Shelton, Paynesville; Mrs. G. W. Dean, Wattle Park; Mrs. M. Shores, Wattle Park.

\* \* \*

#### Thanks Badge:

Mr. A. D. Prater, Orrvale; Mr. C. Smith, Lancefield; Mr. R. Woodall, Lancefield; Mr. T. Parks, Lancefield; Mr. I. Greenaway, Cranbourne; Dr. E. Brentnall, Mont Albert; Mrs. N. Rose, Seymour; Mrs. J. Stillwell, East Brighton; Mr. and Mrs. Schier, Moorabbin; 4 Prisoners from Beechworth Training Prison.

### BADGERS CLUB

The Badgers Club, a group of Scouts and Guides interested in collecting both metal and cloth badges, is compiling a badge history of both movements. Any person interested or with badges of interest should contact the Secretary, P.O. Box 38, Fairfield, Victoria, 3078.