

VOLUME 54 NUMBER 10

MAY, 1977



# Matilda

GIRL GUIDES ASSOCIATION OF VICTORIA





## Guiding Friendship knows no barrier.

During our recent wonderful visit to Japan we travelled from Tokyo to see the Great Buddha at Kamakura. A group of girls in front of us caught our attention and my husband nudged me and said the magic word — "Guides".

I tried to speak to their leader. She spoke no English, but pointed to her assistant. I showed her my badge and said, "Australia". After this had been translated to them the Guides all stood and saluted me.

How proud and yet humble I felt that although we could not speak to each other we were friends because of Guiding.

VI. WILKINS.

## In this issue . . .

	Page
Australia Speaks	279
Britannia Park	281
Down in the Archives	295
Extensions Jubilee	280
Guide Knowledge Badge	283
Guide Shop	298
Irene Fairbairn Fund	284
Know Your Regions	293
Local Association Section	289
Notices	284, 291, 300
Personnel Changes, etc.	299
Reporting from Russell Street	277
Royal Occasion	276
State Commissioner's Letter	275
Timothy Tawny	282
Training Calendar	297
Training Pages	285-288
Trefoil Guilds	290
Unit News	278, 292, 296

# MATILDA

PUBLISHED BY THE GIRL GUIDES ASSOCIATION OF VICTORIA  
20 RUSSELL STREET, MELBOURNE, VICTORIA, AUSTRALIA, 3000

State Commissioner: MRS. F. S. GRIMWADE

State Secretary: MISS M. W. BARR

Assistant State Commissioners: MRS. D. O. OLDFIELD

MRS. A. J. TURNBULL

Editor: MRS. L. I. RICHARDSON, 31 Hampshire Road, Forest Hill, 3131



## *From our State Commissioner*

Dear Everyone,

I hope Brownies and Guides throughout the State are now wearing our Silver Jubilee Badges, which fortunately appeared in the shop the day the Queen arrived in Melbourne. We hope metal badges for adults will arrive very soon.

The Queen's Jubilee visit was a wonderful success and Guide members participated in so many ways, I felt so very proud as I watched immaculate Rangers and Guides open the door of the Queen's car. Guides handed out flags as the royal party walked down Collins Street to the Town Hall where the Queen was received by the Lord Mayor, and presented with a posy of flowers by Guide Janet Watson from North Melbourne. Many Guides attended the gathering of school children in Royal Park and a Guide from Ballarat was presented to Her Majesty.

Some of our adult personnel and young people were fortunate enough to attend the State Reception at the National Gallery. As I met with them during the evening I really felt that for all of us this was a night to remember — especially for those Rangers who chatted with the Duke!

I collected an interesting parcel from my mail box the day before the Queen arrived. It was addressed to Her Majesty Queen Elizabeth II, c/o Mrs F. S. Grimwade. It was a book about Balmoral from 1st Balmoral Guide Company. The girls felt they had an additional link with the Queen because of her home at Balmoral. Fortunately, we were able to get this present delivered

to the Britannia and some very thrilled girls received a message of thanks from the Queen for their very kind thought.

After the Victorian Jubilee tour of barely 36 hours, during which the Queen worked so very hard for us, I think we all have given just a little extra thought to the Promise we make to serve the Queen.

Ranger Section Monster Fete in aid of the Sailing School was a great success. To quote Ann it was the best fete she had ever been to — perhaps because she could buy paper dress patterns for 5c each! The fete raised over \$3000 and my congratulations and thanks go to all who worked so very hard — well done, Rangers.

Conferences are coming around again and Lysbeth spent a stimulating day at Wimmera Region Conference. She also joined Castlemaine District for their 50th Anniversary.

Rowing Season has now finished and I shall miss my days on the river banks. At the Head of the River the Grimwade family managed to sit next to the Kearney family (National Development) and the Pennington family (Local Associations). It does not matter what you do or where you are, Guiding is never far away. Unfortunately none of our crews were completely successful but it was a great day for everyone.

The Lady Delacombe Cup was one of the most pleasant days Melbourne has had for ages, although some golfers felt it was a little too hot. The stall had an incredible stock of goodies and Jean, Peg and I were able to buy our cakes and vegetables for the next week. Before presenting the trophies I was delighted to present a Thanks Badge to Mrs T. S. Carlyon in recognition of all the work she has done in organising the Lady Delacombe Cup over the years. This has now become a day looked forward to by golfers each year and we are fortunate to have so many people support Guiding in this way.

As I talk of sport — I send out an urgent plea — I need volunteers for the State Commissioner's team to play against the Rangers on Sunday, 7th August — the sport chosen by the Rangers is . . . FOOTBALL. I feel I shall need anything up to 72 players as I am sure many of us will barely last a quarter! Enthusiasm but no experience is all that is required — vitamin pills plus Rafferty's Rules will be issued prior to the match!! Names to the State Secretary soon please.

I am at present reading the report of the Asia Pacific Regional Seminar held at Sangam, 28th November to 7th December, 1976 — the theme of which was Leadership for Today's Girl. One of the most interesting sessions seems to have been on Creative Citizenship. Creative citizens were thought to be people who are concerned and considerate, with independent thought and responsibility. They play an active role in their community, obey the laws and set an example to others.

This song, sung to "Do-Re-Mi" from "The Sound of Music", was composed by one group.

#### **Song of Creative Citizenship**

C — a word for community  
 R — for reality we face  
 E — is for enthusiasm  
 A — for action not just talk  
 T — for time we give to others  
 I — for independent thoughts  
 V — for victory over wrong and  
 E — is for our energy  
 C — for caring every day  
 I — for interest in the world  
 T — for trust that we all share  
 I — for ideals we try to hold  
 Z — for zeal not laziness  
 E — for example we try to give  
 N — for now and not tomorrow  
 and that brings us back to CREATIVE  
 CITIZENSHIP.

Perhaps this is a song which we could do well to learn, as in our community today there is a need for the CREATIVE CITIZEN.

With love and all good wishes,

*Joan E. Grimwade*



#### **A ROYAL OCCASION**

What a night to remember — Thursday, 17th March! Meeting outside the Arts Centre, the eleven of us (8 Rangers and 3 young Guiders), consulted the map of the building and decided on the best vantage point for seeing the Royal Couple.

Needless to say, we were thrilled at the prospect of attending this fantastic State Reception, and representing the Guide Movement.

As there were over 3000 guests, we realised that not everyone could fit into the Great Hall, so we were content to stand beside one of the specially roped off "walks" on the first floor. Whilst waiting, we were served champagne and savouries and we watched the arrival of the Queen and Duke of Edinburgh on video. After welcome speeches in the Great Hall, the Queen and Duke moved leisurely along the special "walks" into the different rooms, chatting with guests.

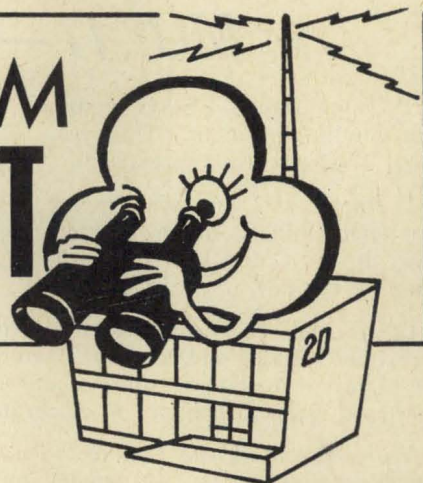
Climax of our night came when the Duke, seeing eleven of us all together, came across to us. He asked Heather Falloon who we were and she told him we were representing the Girl Guides Association. He then remarked to Pam Squire that we should have been watching a good Western on television instead of them!! Robin Hopwood was then asked if she had heard of the Duke of Edinburgh Award. Fortunately, she was able to answer that she had nearly finished her Gold Award.

The Duke seemed quite favourably impressed with us and we all felt very proud to be representing the Girl Guides Association.

And what was our reaction towards the Queen and the Duke? We were thrilled to see the Queen, especially at a function such as this, and absolutely ecstatic to meet and talk to the Duke of Edinburgh! It was an evening we will never forget.

(from "Karingal")

# REPORTING FROM RUSSELL STREET



## SILVER JUBILEE CELEBRATIONS

Through the Harry M. Miller Organisation, the Australian Government has invited the Guide and Scout Associations to take part in Jubilee Commemorative events during the Queen's Birthday weekend. The simultaneous lighting of Bonfires in many hundreds of Districts in all States has been suggested and both Associations have indicated their general support.

All Commissioners will receive full details of this scheme direct from the National Jubilee Commemorative Organisation and each District is free to decide whether or not it wishes to participate. As it is desirable for Guides and Scouts to link together in this project it is suggested that the Guide Commissioner of any District wishing to hold a Bonfire approach her opposite number in Scouting at an early date. How about a combined Guide/Scout campfire and family night?

Please note that it will be necessary to obtain the permission of your local Council, Police and/or C.F.A. Authorities. It will also be essential that top priority be given to all aspects of fire-care and safety, and the use of kerosene or petrol is to be avoided at all costs.

## JUBILEE BADGES

We are pleased to announce the arrival of the metal Queen's Silver Jubilee badges. These are now available from the Guide Shop at \$1.00 each and they may be worn by Adult Members and Rangers in uniform — right breast, under World badge. They can also be worn out-of-uniform by any members, including Brownies and Guides.

## COMMISSIONERS' OPEN DAY

Tuesday, 28th June, is the date set aside for our 1977 Commissioner's Open Day and an interesting programme is again assured.

Time: 10.00 a.m. to 3.00 p.m.

Place: Guide Headquarters.

Lunch: A light lunch will be provided.

Apply to: Mrs. K. B. Macdonald at 9 Margaret

Street, Canterbury, 3126, or the State Secretary at Headquarters, by 14th June.

Programme Suggestions: If you have any special requests concerning the day's programme please send your ideas to Mrs. Macdonald or Miss Barr.

## GUIDE SECTION

The Royal Life Saving Society has changed its address and is now situated at 2 Mavron Street, Ashwood, 3147, phone 277 0626. The attention of Guiders is drawn to the Society's newest manual (6th edition) which contains the current revision of R.L.S.S. syllabi, and advises that it has re-registered its examiners. To obtain the name and address of a registered R.L.S.S. examiner near your area, please write or phone the Secretary.

## BROWNIE GUIDERS' CONFERENCE

Please note that this Conference is to be held on Saturday, 22nd October, and not the 8th as previously advised.

## THE GUIDE SHOP

To facilitate the purchasing of Promise and World Badges by girls and their parents, it has been decided that the long established practice of requiring a written authority-to-purchase can be discontinued. We hope this move will prove helpful to all concerned.

It should be noted, however, that an appropriate written authority such as an Interest Badge Certificate or Warrant Card will be required for badges denoting qualifications gained.

## ANNUAL REPORTS

May is Annual Report Month — please help all members of the Guide Team in your area by sending your reports in on time. Commissioners, be sure to send in to Headquarters any Leader changes which occur in your area after your Reports have been despatched. Thank you.

# MULTI — CELEBRATIONS

Thinking Day is always a special day in the Guide Movement. This year in Bentleigh it was "extra" special.

It started at 7 a.m. when members of 2nd Bentleigh Guide Company hoisted the World Flag at our Guide Hall to mark the beginning of the day.

Later, in the evening, the district Brownies, Guides and Rangers, members of the Local Association, parents and friends gathered again at the hall to celebrate.

We commenced the evening with a tree planting ceremony — gold spades, too! The Local Associations gave the trees to be planted at the hall as a thank-you to the guiders for their work and to help to beautify our grounds.

We moved into the hall for our Thinking Day ceremony which had been planned by 2nd company guides and their "Kinta". Brownies, Guides and Rangers formed three leaves of the trefoil on the floor of the hall, enrolled Local Association members the arrowhead, and leaders, the scroll. Each section also represented a Continent. As the ceremony progressed, the light of a candle, representing Guiding, was spread throughout the world, passing from one continent to another. As the candles were being lit we sang, "This little Guiding Light" — taking the light around the world by altering the words as we sang. We collected the Thinking Day money in a birthday cake decorated with the Thinking Day symbol, flags of all member countries and a photograph of Lord and Lady Baden-Powell while we sang, "We've got the whole world in our hands". The ceremony was very moving and meaningful. We all moved outside again and formed a huge chain of friendship around the flagpole, whilst 2nd Company members lowered the flag.

We had been thinking about Guides from around the world and then we thought about Guides in our District, particularly Fiona Mitchell of 2nd Guide Company who was awarded her Queen's Guide Badge. This presentation took the form of a campfire with International Camp Fire songs interspersed with readings of Fiona's guiding history.

Still there was more to come — our Ranger Guide unit was opened.

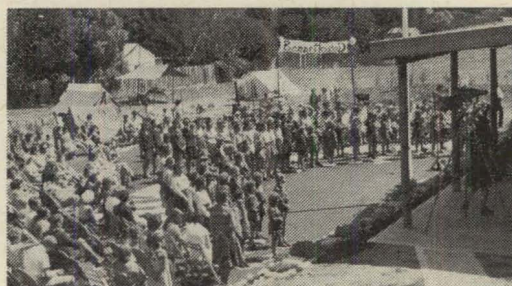
Nine girls swung, on a rope suspended from the rafters, from their companies to be met by Bentleigh (Quadrant) Rangers and introduced to new Ranger Guide leaders (former Guide leaders, "Kootara" and "Trandi").

As the last girl swung on to continue her guiding with the Ranger Guides our fun-packed, thought provoking evening drew to a close with a scrumptious supper.

During the evening we had come to realise again that we are members of a world wide sisterhood and have friends all over the world as well as in our own District. Thinking Day 1977 is one Bentleigh District will remember for a long time.

J. RICHARDS,  
Bentleigh (Quadrant) Rangers.

## BENNETTSWOOD LOG CABIN



After twelve months hard work Bennettswood District built a log cabin hall near the Scout Hall.

It was opened by the Mayor of Box Hill who was given the key to the front door by our four Queen's Guides.

The occasion was very colourful. All our district and the Scouts took part in various activities. We buried a capsule in the ground to be opened in the year 2000, and we had afternoon tea.

Later Brownies and Guides performed a Thinking Day pageant for the visitors.

LYNNE KELLS,  
1st Bennettswood Brownie Pack.

# AUSTRALIA SPEAKS

Miss Margaret Coleman, The Australian Training Adviser, relinquished this position on 1st April, 1977, and Miss Audrey Lawrie of Queensland commenced her five year term of office. I am sure Margaret's sense of humour made her choose that particular date for the changeover!

Margaret brought to this position a wealth of knowledge and experience and our Association is much richer for this. During her term the Australian Handbooks were published — Margaret wrote the Ranger Guide Handbook, the Leader's Workbook and many training pamphlets. The Exchange Trainers Scheme enabling Trainers to benefit from experience in another State, the Look at Leadership Training for members of other organisations as well as our own and important changes in our training scheme have been some of the highlights of Margaret's term of office.

Margaret was a member of the delegation to the World Conference in Canada in 1972, and subsequently undertook a study tour of Canada, the United States of America, and the United Kingdom, to observe methods of Training. In 1974, she was a member of the Planning Committee for the Gathering of Asian-Pacific Trainers, and also attended this Gathering in New Zealand.

Thank you, Margaret, for your devoted and sheer hard work for the benefit of Guiding throughout Australia; we will miss you but as each new person brings her own personality and ideas to the position we welcome Audrey and look forward to working with her.

*Mary Lambie.*

Chief Commissioner, Australia.

## Welcome to Audrey

I know that Training in Australia will benefit by the calm clear-sightedness of Audrey's manner and organisation. She brings to the Australian Training Adviser's job a wide experience of Guiding and a firm background in educational matters. Having recently spent several months overseas attending Conferences and Seminars in various countries, I know she is up-to-date with the latest trends and methods. Your support for training innovations as recommended by Audrey and her Committee will bring forth some interesting developments.

To be good at your job, practice and know-how is needed. Greater satisfaction and pleasure will follow when you are confident in your own ability, secure in your aim and up-to-date with the methods.

The Australian Leadership Training Plan, introduced a few years ago, and now accepted throughout Australia, offers a scheme of training which is flexible to suit the needs of every adult and acts as a stimulus for each Leader and Commissioner to plan her own learning so that she may develop leadership qualities and skills.

Most folk enjoy a Guide training — particularly a residential one. "It is the warmth, friendship, sharing and fun", they say.

And so it is with all Guiding. It is the amount we put into it, that makes its own rewards. What we pass on to the girls in the units or the Leaders in the district, depends very much on the quality of leadership we offer. Much of this quality can be gained during trainings; skills indoor and out — guide-like and otherwise; games — how and why; songs for singing and facts for sharing; ideas for building onto; and most of all, the spirit of Guiding as embodied in the aims and principles for all who are willing to accept it. Make every opportunity for a training experience.

(Continued on page 294)

# THANK YOU for CARING

THANK YOU, THANK YOU, THANK YOU.

From Cressy come these sincere words to all those Brownies, Guides, Leaders and mothers who provided the tasty cakes and biscuits for the lunch boxes, the utility boxes packed by loving hands, little and big, brought to Cressy through to Streatham bringing smiles and cheer to tired cooks and families on the way through.

The goodies were transported by our Assistant State Commissioner, Mrs Turnbull who is Convenor of the Guide Service Mobile Welfare Team, Molly Brownless also a Team Member, Barbara Kearney and her helpers and distributed by Western Plains Commissioners, leaders and Local Associations to everyone affected. Many smiles and words of "Thanks" collected on the way around would have made you all glad that you cared.

Nearly everyone is back to work now, fences are going ahead and Nature is helping too, for all over the blackened areas is showing a green sheen which cheers us up a lot.

From me, personally, to all of my guiding friends in Victoria, and indeed in all States where I have camped at various times, and to our brothers in Scouting, please accept my family's thanks. John, Robin and I will never forget the messages, donations, physical and moral support which flowed in to us during that week.

All Western Plains Guides, Brownies, Commissioners and Leaders performed service that week, in ways that perhaps we had never imagined. Most were affected either personally with the loss of a Granddad and an uncle, or by seeing their families' stock so cruelly afflicted . . . there was no way it could be hidden. They came through with flying colours and the business of Guiding was barely interrupted. We ran endless messages, washed dozens of dishes, provided endless meals and "cuppas" and rounded up stock.

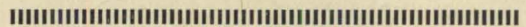
There were humorous moments . . . like the bone china tea set (a prized possession), which survived the roof falling in on it. And joyous ones, like when six hours after the fire our two beloved horses trotted home out of the haze, unharmed.

I had saved our valuable kennel stock, our lightweight camping gear (naturally), and John's international badge covered camp blankets (it looked at one stage as if that was all we may have salvaged). Fred and Robin were soon helping with our friends' stock, and the dogs took it all in their stride.

Finally, to Lancefield Guides and Brownies who sent the Thinking Day Card with the cheerful Kanga on the cover. To a new Company, not yet six months old, and learning all about the history of Guiding, Thinking Day seemed a little remote . . . until your card arrived with its loving message.

With these and other tangible offers of help and the generosity of Irrewarra Trefoil Guild, we in Cressy have indeed learned, that Guiding is Caring.

BETH L. GROVER, Guider,  
1st Cressy Guide Company.



## GOLDEN JUBILEE — EXTENSIONS

Guiders please note change of date for Golden Jubilee Reunion — **6th August**.

The Reunion will be held at the Y.W.C.A., 489 Elizabeth Street, Melbourne between 1.30 p.m. and 4.30 p.m. The Extension Auxiliary will hold a brief Annual Meeting also.

This will be a very exciting day.

Please inform any past Guiders who would be interested. It is difficult to contact everyone because of changes of name and address.

Any queries may be made to Mrs Margaret Owens, 17 Leonard Street, Moorabbin (telephone 95 3847).





# BRITANNIA PARK

Do you know where this picture was taken?

Have you ever been to Britannia Park?

Our lovely bushland property is just 42 miles from Melbourne, and especially inviting now that the hot weather is over. A new and enthusiastic committee has just begun a five-year term, and we hope to further improve Britannia Park for our guiding family to enjoy. Will you help us with your interest and encouragement?

**GUIDERS** — Bring your units or even a patrol for a weekend or a day.

**LOCAL ASSOCIATIONS** — Pack a picnic lunch and have your meeting here for a change.

**BROWNIES GUIDES AND RANGERS** — Persuade your leaders to arrange a camp, a hike or nature walk for you when it is your turn to plan the unit program.

**TREFOIL GUILDERS** — How about having one of your meetings in the place you have known and loved for so long? Notice all the improvements made by Mrs Tucker's committee and all her helpers, and give suggestions for our new committee to tackle.

Mrs McNally at Headquarters (telephone 63 7911) will be able to tell you the facilities available, how to get there, and arrange a convenient date with the warden. Mr Fraser and his wife, who live on the property, do a wonderful job caring for Britannia Park for us, and the courtesy and thoughtfulness of visitors will make their task much happier.

## MAINTENANCE FUND

Thank you to the following people who have so generously supported Britannia Park during the month of March:

3rd March: Hawthorn Local Association.

26th March: Heatherdale Guide Company.

28th March: Healesville Local Association.

Could you and your friends, your unit or Local Association raise \$6.00 to maintain your bush home for one day during the year? This is one of our most important sources of income, and it would be thrilling if we could have a name for every date.

**Miss Alma Cockerell, 11 Ross Street, Northcote, 3070 (telephone 48 3404)** will be pleased to allot you a date if necessary, but no doubt you have a special day you would like to remember each year, e.g. the birthday of your company, the first time you went camping and fell in the river — the possibilities are endless, so please send Miss Cockerell a date, your name and address, and your \$6 to help us with this year's maintenance.

**YOLAND SARGOOD, Convener.**

\* \* \*

Flattery is the art of telling a person just what he thinks about himself.

\* \* \*

Lose an hour in the morning and you will look for it for the rest of the day.

# Timothy Tawny

Our most recent visitor is a very unusual fellow and not much is known about his family, as they are so shy and secretive.

"Timothy" is a Tawny Frogmouth who has been with us now for two weeks. His scientific name is *Podargus Strigoides* — which is a mixture of French and Greek referring to him being owl-like with strange feet.

His feet are different from those of the owl as they are much smaller and not strong clasping claws like an owl's. His beak is hooked at the tip, but it is not a tearing beak like that of owls or hawks.

It is quite wide — very like a frog's mouth, as his name suggests. Stiff, hair-like feathers around his face aid him in catching night-flying insects — rather like a net.

Tim's colouring is beautiful, in tones of tawny, fawny grey and white and pale browns. The Tawny Frogmouth is a master of disguise in the animal world.

During the day he sits unseen on a tree limb, his sombre tonings blending with the boughs or stumps. He holds his head erect and keeps his eyes tightly closed so that he really does look like a piece of the tree.

Tim does this so well that often I am unable to see him, even in the big open aviary where he is staying.

While in this position he is smooth and sleek and not a feather moves.

But, if disturbed, he resembles Oscar Grouch and the Cookie Monster! His feathers will rise till he is a big ball of fluff and his big yellow eyes grow to the size of saucers. He lowers his wings and assumes an aggressive stance, bright yellow mouth wide open and emitting a sort of hiss to warn the interloper.

When he first arrived Timothy was very upset and attacked everything in sight. Within minutes he had "killed" a pair of underpants, a blue cup and the cat's tail while on the rampage in our bedroom! A more fearsome, ferocious feathered fury has never been seen!

Tim's beak is razor sharp and clamps like a knife on the fingers that feed him. While owls grab and tear — Tim just snaps and slices!

When he was brought to us he was weak and sore with a broken wing, so we bandaged his wing to his body and wondered if he would survive. He had been hit by a car while feeding on mice and insects on a bush road.

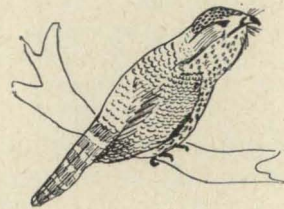
Our biggest problem was food, as we are not very good at insect catching. However, we found he would eat frogs and small birds, so the unprotected sparrow was useful. He also eats steak — in large mouthfuls at one gulp.

In its natural state the Tawny Frogmouth makes a booming noise and some folk call it a Mopoke.

All Tim does is fluff up and sway and hiss when I go out to feed him late at night.

He is a fine feathered fellow and we look forward to being able to release him in the wilds when his wing is healed.

—ANNE L. FRASER



\* \* \*

All arguments have two sides, but some have no ends.

\* \* \*

Ideas must work through the brains and the arms of good and brave men or they are not better than dreams.

# GUIDE KNOWLEDGE BADGE

Because of the variation between the expectations of testers for the Guide Knowledge Badge, the Guide Section presents the following outline of what we see could be expected of 14 and 15 year olds doing this badge during 1977.

Another outline will be presented for 1978 when the syllabus may be altered — and when the girls doing this badge will be younger.

This information has been circulated direct to all registered testers of this badge and is being printed here so that Guide Guiders will be aware of what will be expected of their girls who work for this badge.

## Clauses 1, 2 and 3

The material can be presented in any order by the girl, but for convenience we present it under headings — not under clauses.

## Knowledge of the Founder

Birth; types of homelife; type of schooling; interests and hobbies.

Basic outline of his army career including Mafeking and the importance these had in relation to the creation of the Boy Scouts.

When and why he retired from the army; his marriage and to whom; his death, when and where.

## How Scouting began

The part played by Brownsea Island and the book "Scouting for Boys".

## How Guiding Began

Crystal Palace Rally.

Miss Agnes Baden-Powell — her contribution.

Olave Baden-Powell — her birth, marriage and involvement (including Chief Guide).

Royalty — involvement and patronage over the years.

The beginning of other section (Brownies, Rangers) and groups such as Lones, Extensions and Trefoil.

## How Guiding began in Australia and in our State

As outlined in the Australian Guide Handbook.

Mrs Irene Fairbairn — her contribution and how she is remembered.

The formation of the Australian Association and Australian Executive Committee and what it does. (It is not necessary for girls to give names of people concerned except perhaps for the Australian Chief Commissioner).

Who usually accepts the offices of Australian and State President.

First Interstate camp and **some** major Australian events.

Knowledge of what are "Matilda", Britannia Park, State Guide Headquarters and of **some** major State events, like State Rallies, etc.

## How Guiding began in the Company

In some cases records have not been kept, or they have been lost — but where possible the Guide should have been given access to Log and Minute books and be able to speak with "ex" Guides of the Company from where she can gather such information as

- When the Company started.
- What Guides did then and any major events in which the Company has been involved.
- Something of her own "Guide Life" and events in which she has participated.
- She should also be aware of the formation and purpose of the Local Association and of the other Units of other Sections in her District.

## W.A.G.G.S.

The history leading to the formation of the World Association.

Founder members and the present membership (by numbers of countries).

Purpose of the World Bureau, World Committee and Conferences.

Common "links" between Guide and Girl Scout countries, e.g. Promise and Law, Thinking Day, World Flag, etc.

The World "Centres" — where they are and who may go there.

International gatherings.

Briefly outline interesting ways how Guiding began in some other countries — this to be in broad terms so the "spirit" of development is understood — e.g. the Scandinavian countries, in the U.S.A. through Juliette Low, etc.

#### Clause 2

Note that the girl may read an "equivalent book" to those listed — and this could be a more simple book if the girl is young.

#### Clause 4

To be interpreted as it is written.

Y. JAMES,

Guide Adviser (8-41977).

### Y.W.C.A. ACCOMMODATION

Recently I had the pleasure of being shown over the motel accommodation offered by the Y.W.C.A., 489 Elizabeth Street, Melbourne. This offers very comfortable single, twin, family, and "dormitory" type accommodation (single rooms are equipped for use by handicapped people) and I feel this could be ideal for country folk wishing to remain in the city proper while visiting Melbourne. Despite being so near city traffic, rooms are very quiet.

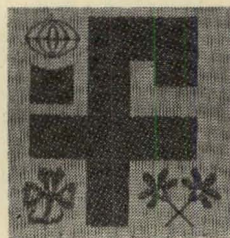
"Dormitories" are motel rooms with individual facilities, but each houses four bunk beds. These are available to parties of not less than twenty, and rates vary if the party wishes to use their own sleeping bags or have linen provided.

Rates are for room only, and compare favourably with other like accommodation. There is a cafeteria on the premises, and other food shops are close by.

Any information can be obtained from me, or from Mrs Betty Kerr, Registrar, Y.W.C.A. (telephone 329 5188).

DORIS C. SPRATLING,

Convener of Hospitality.



### IRENE FAIRBAIRN AWARD FUND

The Irene Fairbairn Award Fund, the Australian travel fund set up in honour of Mrs Fairbairn, our very first Chief Commissioner, needs the support of every member of the Movement if it is to grow and become established as a really worthwhile part of Australian Guiding.

The Fund is specifically to assist selected Rangers and young Guiders, roughly in the 16-25 years age group, to travel interstate or overseas to participate in meetings, camps, conferences, etc. More and more of these opportunities are arising, so the more money that is invested in the fund, the more interest received, and the greater the number of awards that can be made.

To date, just over \$20,000 is invested and some of the money available this year is to go towards the fares of three Victorian guides who are part of the Australian contingent to the International Camp in Nova Scotia, Canada.

So Canada is the country chosen this year for the Irene Fairbairn Fund week, and all units in Victoria are urged to plan a special meeting in August to promote the Fund. Ideas for programs will be given in subsequent issues of Matilda. However, as Mrs Fairbairn was famous for her daffodils, here is one idea — particularly for Brownies. How about purchasing daffodil bulbs now — nurturing them during the winter so that they bloom in pots in August and perhaps selling them to raise money for the Fund?

S.F.

\* \* \*

Our deeds determine us as much as we determine our deeds.



# TRAINING PAGES

## FEELING GOOD, LOOKING GOOD

"Twist me and turn me,  
Show me the elf  
I looked in the water  
And there saw myself".

You will recognise this rhyme from the Brownie Story. The water mirrors the reflection of Tommy and Betty and they see themselves as Brownies.

Is there a large mirror in your Guide Company hall? Prepare a check list similar to the following and ask your Guides to look in the mirror and ask themselves, "What do I see — How do I measure up?"

"First, my hair. Might be a good idea to give it a hundred strokes at night; a trip to the hairdresser for a trim would help.

My smile. Maybe it needs a polish like my Guide Badge.

My teeth. They really do look better now I am brushing them after each meal, and those Inter-dens are helping the gums to be much stronger.

My hands. Those nails could do with a bit of care . . . really, they do so much work for me they deserve some reward.

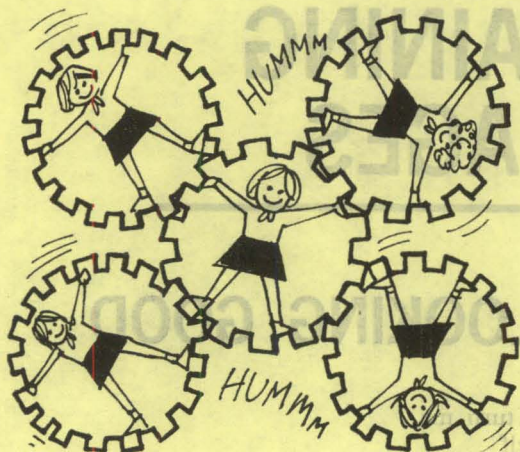
My body. Surely it has so much to do that I must care for it in every way. Feed it good food, give it a chance to rest. I will have only one, so I must make the most of it.

My feet. A lifetime can be a long time, and they will carry me many miles. Surely they deserve to be treated well.

Now, I look again, and there are my eyes, reflecting me to the world around. A clear, bright, cheerful pair of eyes. Let me say a prayer to help my eyes reflect the sort of person I would try to be".



# FEELING GOOD, LOOKING GOOD



Being healthy is the concern of every person and as leaders we are trying to help our girls to be the best they can in every way. Have you had an expert in grooming come to your unit meeting, or a nutrition specialist, or had a make-up demonstration? Have you asked everyone to bring hairbrushes and then shown the girls how to use them? Discussions or games built around health points are a happy way to get a message across without embarrassing anyone. Care of hands and feet can be emphasised in games such as:

Trace around a hand, mix up the drawings, then find the right hand to match the pattern.

Hold a pencil in your toes and write your name or draw a shape. These activities draw attention to the nails and provide a chance to show nail care, round for the fingers, straight for the toes.

## YOUR DISTRICT LIBRARY

Available from your Guide Shop:

- Basics of the W.A.G.G.G.S. (replacing Blue Pamphlet)
- "The Four World Centres" (revised)
- "Past and Present" (revised)

No one cares for you as much as you should care for yourself. I do not mean being selfish, but I do mean self-knowing. Help your older Guides and Ranger Guides to understand this responsibility. Their daily routine will naturally include looking critically at themselves in a mirror, and there should be little difficulty in encouraging the girls to investigate and discuss how to care for themselves.

## Do they eat properly?

What they eat effects, in every way, how they relate to others, how they look, how they study or work. Only the best is good enough. A balanced diet is something to be worked at. Easy snacks, busy living, long hours all go hand in hand, and the energy burnt must be replaced by good food. Those easy snacks are very likely inadequate for developing bodies. A sensible breakfast of museli, egg, fruit juice and wholemeal bread with just a snack for morning tea will sustain until lunch. It is not good to rush off having eaten only a cup of tea and a slice of white toast, expecting to fill up on biscuits at 10.30 a.m. It is a good idea to carry an apple to eat at those hungry in-between times. Lunch at the corner shop, canteen or out of school bag can always include wholemeal bread, cheese, dried fruits, fresh fruit, nuts and carrots . . . these give greater staying power than sweet pies and pastries. Dinner should be a good meal including meat or fish, fresh vegetables, potato in the skin (for roughage) and a sweet that is not too sugary. A close watch should be kept on those sweets. The girls are at the energy spending age and sugar gives fuel for the fires, but they need to be sparing with the fuel. Spots should then disappear too.



# FEELING GOOD, LOOKING GOOD

## How do they appear to others?

Are they careful about how they dress? Certainly these days casual clothes will get by in most places, but there are times when they are not suitable. Sometimes carelessness with appearance may offend others. Long hair is fine, but it needs special care to be beautiful. Shoes are very important to the development of the body. A girl's back is still growing and so are her internal organs. Poor shoes will cause many muscles to be strained and may well give trouble later in life; going barefooted can easily lead to injury and accidents.



## How do they look in uniform?

Are they proud to wear it, even if they think it does not particularly suit their style of beauty? It should be clean, a suitable length, badges shining and shoes clean. When in uniform Guides and Rangers are ambassadors for their group so they need to be proud of it and act accordingly. Make-up can and should be used to enhance appearances. If they have an inclination to use it they should do so with particular care. Advertising is a strong contender for the pay packet and they are the ones who hold the purse strings. Help them to see the need to get values straight and to work out the best way to use their money.

Ask each girl to take another peep in the mirror. A quick look at those parts which are her alone — her mind and soul. How is she caring for them? Has she looked for God lately? The devil is always round the corner waiting his chance, so what about sitting down and taking stock. Has she been thoughtful of others, a few thank-you's never go astray. That juicy bit of gossip should be forgotten, a friendly hand to another can be so easy to give. Courtesy costs nothing and it pays enormous dividends.

Do the girls know that the longest word in the English language is "SMILES"????

## DISTRICT DISCUSSION TOPIC



### "A challenge for keeping fit"

Challenge yourselves for this month on one aspect of keeping fit.

Try some exercises.

Try a sensible diet.

Go for a jog regularly.

Get sufficient sleep.

Keep track of your progress.

Looking at yourself, checking how you measure up and setting your challenge is a personal matter but "have we ways of helping each other meet our individual challenges?"

# FEELING GOOD AGILITY BADGES



These badges may require a certain amount of outside help in the preparation of your girls, especially in the guide unit.

Leapfrog is quite difficult for many children and adequate supervision is necessary.

Handstands need support too.

Lifeline throwing is a skill and needs plenty of time to practice.

Throwing a hard ball is quite difficult and so is catching it. A daytime outing could include a visit to an open space to give plenty of room for distance throwing and will allow for wild throws.

Tennis ball target practice in a hall is great fun, especially if you make targets with faces on them.

Skiping games are popular.

A mat on the floor for forward and backward rolls makes the exercise more comfortable.

Rope climbing and handstands must be supervised and plenty of support given. Safety first!

When practising walking use a book or block of wood weighing about two pounds. Do not make a race of this activity, you are teaching deportment and the object is to stand and walk tall.

If you are jogging at night, remember to have adequate supervision so that the girls are watched over by adults. Talk to the girls about staying together and going the pace of the slowest.

The trainer of the girls may not be the Assessor and the Assessor must be a qualified person appointed by your District Commissioner.



# LOCAL



# ASSOCIATION SECTION

## Thought For The Month

Happiness is not what you experience but what you remember.

## Local Association Conference

Have you marked 2nd August on your calendar to attend the 20th State Conference of Local Associations at the Broadmeadows Town Hall? For more details, refer to this Section in April issue. Application forms to attend the Conference will be sent to Secretaries later this month.

Make sure YOUR Local Association is represented on this day.

## Coping With Fire

A fire extinguisher demonstration proved interesting for members of Ballan Local Association and girls from Ballan Guide Company. All learnt a lot about things they previously took for granted.

One young Guide wondered how to put out a fire if it was on a horse, as a woollen jumper would not be big enough to smother it! The demonstrator showed how to use the powerful water extinguisher first, followed by the foam extinguisher.

It was hoped this new-found knowledge would never have to be put into action, but they all felt a little wiser about fire and how to cope with it.

Ballan Local Association has held its meetings at night during the summer months, but after May they plan to revert to day meetings, hoping this will suit all members.

## 1978 Guide Calendars

Sale of Guide calendars is a good fund-raising idea for Local Associations. Have you placed your order?

Orders must be in by 31st May, 1977, to the Calendar Sub-committee, Public Relations Department, Girl Guides Association, 20 Russell Street, Melbourne, 3000.

## Special Request

Has your Local Association any members who can provide willing hands to help serve luncheon at meetings of Commissioners at Guide Headquarters. These are not very frequent and the job only requires putting sandwiches and fruit on plates and providing tea and coffee. These are all supplied by Headquarters so there is no cost to the Local Association. After lunch, there is washing and tidying up to be done and the job is completed.

The times these helpers are required are between 11.30 a.m. and about 2.00 p.m. Please contact the State Secretary, Miss Barr, if any of your members is able to offer assistance.

## Another Fund-Raising Possibility

Australia's Finest, a confectionery firm, is offering specially packaged peanut brittle toffee for re-sale by Guide groups as a source of finance. Packets, overprinted with the Guide badge and the name of the Unit or Local Association, are available at 83 cents each for re-sale at \$1.25 on a minimum order of 6 cartons which cost \$20.00 each. Orders are despatched to the nearest Railway Station.

For further information contact Mrs Neil Montgomery, 4 Myamyn Street, Armadale, 3143, or telephone 20 2849.

## RECIPE CORNER

### Old-fashioned Sultana Cake

1 pkt. sultanas (500 gr.), 1 cup water, 1 teasp. bicarb. soda. Soak above ingredients together overnight.

3 tblsps. butter, 1 cup sugar, 3 eggs, 2 cups plain flour. Cream butter and sugar, add eggs and beat well. Fold in sifted plain flour, then add sultanas, water and soda.

Bake in moderate oven for 1½ hours.

X X X

Please send contributions for this Section to Mrs D. O. Oldfield, 4 Embling Road, Malvern, 3144.



The State Commissioner,  
Girl Guides Association, Victoria,  
20 Russell Street,  
MELBOURNE, VIC. 3000

Dear Mrs. Grimwade,

The Eleventh Australian Jamboree recently completed, was regarded by most to have been a great success. It could not have been staged at all without the assistance of so many individuals and organisations.

Your Association's support for the Guide Day and your action in approving the attendance of Mrs Lamond and her Ranger Team were greatly appreciated — their work in the hospital area was quite an inspiration to us all.

The Jamboree Council, in thanking you on behalf of more than 14,000 Australian and Overseas Scouts who took part in the Jamboree, trusts you will accept the enclosed Certificate as a token of our appreciation of your generous assistance.

Yours sincerely,

W. P. DAWSON,  
Jamboree Camp Chief  
(The Scout Association of Australia)

\*

\*

Except for articles where copyright restrictions are indicated, material in "Matilda" may be reprinted in Guide and Scout magazines without prior permission. A credit line would however be appreciated.

## RETIREMENT HOMES PROJECT

Further to reports which have appeared in Matilda during recent months we are pleased to tell you that —

- publicity material has been prepared and displayed.
- a feasibility study has been set up for six units.
- a site must be decided upon before action can be taken regarding grants/fund raising and definite plans.
- it is recommended that the units be in a suburban or country area where Scouting/Guiding is or has been very active.

Is there a likely property or land in your area?

Please let us know through Trefoil Adviser, Mrs E. Lister, 440 South Road, Moorabbin, 3189.



## TOWN AND COUNTRY TREFOIL GUILD

At our most recent meeting Mrs L. Gregory told of increasing interest in the idea of the Trefoil and Baden-Powell Scout Guilds to perform some form of accommodation for retired members of the two Associations.

Raffle books for the patchwork quilt made by members of the Guild were distributed with an excellent coloured photograph of the quilt on a bed. The raffles (authorised) will be finalised in May and our next meeting will be held on 23rd May at Shoreham Campsite where we hope to hand over the proceeds.

E.T.



## TIRELESS WORKER FOR GUIDING

Mrs May Townsend, with her husband is leaving us shortly to return to England.

May has been a regular contributor to Matilda with her humorous stick sketches, her poems, prayers and reports on various happenings.

For many years May has been very busy in the West Metropolitan area, involved in Brownie Guide and district activities and sharing her many talents. She is clever with handcraft and is a fine artist.

As Secretary of Argana Trefoil Guild for the last four years, she has been responsible for the formation of a Trim Club in that area, has designed and produced our Trefoil tea-towel and place mats, and as my friend and committee member she has always been so very helpful and co-operative.

May is a Trefoil representative on State Council, and has produced publicity material for the Retirement Homes Project.

We are all richer for knowing May, we shall miss her so much, but wish her health and happiness when she returns home to her "Robin Hood" country.

I.L.

## IRAN — HOSTESS TO THE 23rd WORLD CONFERENCE

Earlier this year Girl Scouts of Iran were visited by Lady Price, Chairman of the World Committee, who took advantage of her flight home to Australia, following the World Committee Meeting in London, to stop in Iran.

Director of the World Bureau, Miss Lyn Joynt, visited Iran in July. She was delighted to meet many Girl Scouts during her stay, which included visits to their beautiful headquarters, a seminar for trainers being held at a permanent camp-site north of Tehran, and a camp as Mashad, where Girl Scouts and Boy Scouts are constructing an entire jamboree site almost entirely by themselves (from sewing bed linen, making bricks and welding steel pipes, to constructing a dam).

She was able to combine her visit with discussions related to the 23rd World Conference to be held at the Olympic Village near Tehran in 1978.

(from World Bureau Newsletter)

## TYNONG NORTH CAMPSITES

Two different campsites in Tynong North are leased by South Eastern and South Metropolitan Regions. These campsites may be reached by driving eastwards from Melbourne along the Princes Highway and turning north after passing the 70 kilometre post. After another 5.5 kilometres (3½ miles) on the Tynong North road the Cornucopia Museum is reached and a little further along the same road the first property may be found adjoining Mill Valley Ranch.

On this property, a small area of virgin bush amidst farms, is a house called "Alcheringa" (In the Dreamtime) and two campsites, "Noonameena" (Sleepy Place in the Bush) and "Karingal" (Happy Camp). The house accommodates 24 and the campsites, which are fully equipped, cater for 20 or more.

"Tandara" (Welcome Here), the other campsite which is in State Forest is unequipped and a further 5.5 kilometres along the same road.

Bookings may be made from the first of the month (not on Saturdays or Sundays) six months ahead by Units of the two Regions owning the sites. Other Units may book from the first of the month five months ahead. Trainings may be arranged earlier. Enquiries should be made from the Booking Secretary, Mrs C. M. Williamson, 6 Haines Street, Cheltenham, 3192 (telephone 93 2467).

K.W.



## CAN YOU HELP?

7th Victorian Lone Guide Company was originally registered in June 1929, the first Captain being Leah Waycott from Mairdample.

Present leader Mrs B. Lardner, 51 Bundeena Avenue, Noble Park, 3174, would be pleased to learn anything about the company between 1929 and 1953 as she is unable to trace any records for that period.

## RANGER REGATTA

Fisherman's Beach at Mornington, once more became host to scores of blue clad Rangers, ready for a fun weekend of boating.

The event was the annual Ranger Section Regatta, and Rangers from thirty-six units turned out to take part in events ranging from straight out racing and seamanship abilities to novelty races.

What fun in novelty races for crews to see their ever vocal coxes sitting silent, delicately balancing raw eggs in spoons clenched tightly between their teeth! Not to mention the mathematical traumas of coxes who had to 'join the dots' . . . while sitting 'far out at sea'.

All Rangers were catered for, in categories ranging from 'Greenies' right through to more experienced 'Old Salts'.

No-one was forgotten, and the extension Rangers so much enjoyed their rowing during the lunch break that they intend to enter into competition next year.

Comments arising from the weekend were 'beaut', 'really good', 'everyone is friendly', 'you get to know people', 'had a great time', 'well organised', and to sum up everyone's feelings, 'The girls on the committee have done a fabulous job'.

As well as the racing, other boating activities proved extremely popular. A constant stream of Rangers lined up to try their hand at the Kayak, and a 'waiting list' proved the only way to cope with the mass of Rangers eagerly awaiting their turn on the Ranger Sailing School's new 'Mirror'. For many girls this was their first experience of sailing and they certainly went away feeling very enthusiastic about this activity.

Overall competition was won by Balwyn (Brisbane) Rangers, with Essendon Rangers and Frankston (Cerberus) Rangers coming second and third respectively.

"PARTICIPANT".

## CANOEING WEEKEND

21st-22nd May. — Details later.

## SAILING SCHOOL WEEKEND

30th April-1st May.—Training in sailing skills.

## BY AIR TO RANGERS

When your father is an airline pilot, your mother is an ex-air hostess, and your brother works for an airline, where do you have your Queen's Guide Ceremony but on an aircraft.

Lower Plenty District celebrated with Mandy Chapman and had a great night when we all assembled at Tullamarine by courtesy of TAA. Excitement ran high, Guiders, testers and friends attended some from as far afield as Geelong and Bendigo. Mandy "climbed" her ladder of achievements to the front of the plane where her mother, Division Commissioner, Mrs Laurie Chapman presented her with her badge. Then in her special initiation outfit Mandy "flew" to Rangers, receiving her feathers (the eight points of guiding) on the way. Supper was served by air hostesses and Mr Peter Chapman invited those interested to inspect the cockpit as they left the plane.

We were all on cloud nine as we returned to the lounge to eat Mandy's cake.

Our thanks to all who participated and helped to make this a memorable and enjoyable evening.

Maureen Hancock,

Leader — 2nd Lower Plenty Guide Company.

## THINKING DAY DINNER

Thinking Day was eventful for Surrey Hills Ranger Guides. We held an International Dinner and served our guests typically **Australian** chips, twisties and lemonade, **French** onion soup with garlic bread, Beef Stroganoff from **Russia**, sauerkraut and bratwurst from **Germany**, and a **Hawaiian** fruit salad. Then followed, for those still able to move, cheeses from **Denmark**, **Switzerland** and **France** with olives from **Greece**, not forgetting **Dutch** coffee and **Indian** tea.

LIZ WADE,

Surrey Hills Ranger Guide Unit.

# KNOW YOUR REGIONS

## Otway Region

From shipwrecks to saltmines, stonewallers to scientists, earthquakes to explorers — the history of the Otway Region must rank among the most intriguing of our State.

Peat fires and bush parsons, mysteries and massacres, escaped convicts, famous authors and extinct volcanoes all take their place in the colourful patchwork of this unusual area's history.

The name of the region is taken from the magnificent Ranges — which in turn received their name from Cape Otway. An early sailor, Lieutenant Grant, in 1800 named the cape in honour of Captain Albany Ottway of the Royal Navy.

**Polwarth Division**, nearest the Otways, takes in Apollo Bay, Beecac, Birregurra, Colac, Elliminyt and Corangamite South.

Apollo Bay was first settled by the Hentys as a whaling station in 1845, with timber cutters moving into the forests by 1850. Steamers carried the produce of farms established later.

Beecac settlement commenced around 1860 when salt mining was a thriving industry. Grapes were cultivated, dairying and grazing started and a railway built to carry produce. Local farmers carried home-made butter to the goldfields during the goldrush.

Birregurra is an aboriginal name meaning "bend in the river" and its first white inhabitants were of a Mission called Huntingdale founded in 1839.

Grazing was the chief industry and sawmills flourished during the 1860's.

South Corangamite was also settled around this time, with apricot and cherry orchards being one livelihood. Rabbiting, timber milling and plant nurseries were followed by dairying, which remains today.

Elliminyt was settled in 1837 with the arrival of pioneer Hugh Murray, who commenced farming and is recalled today in the name of nearby Colac's main shopping street.

Sawmills operated here, too, and a dairying company formed in 1892 was followed by establishment of a brick works, and the Beech Forest narrow gauge railway opened in 1902, with Elliminyt as one of its stations.

### South-Western Division

The Allan brothers are remembered in this district, which was first settled by them, by the town of Allansford.

In the 1840's the Allans set up farms along the bank of the Hopkins River, which in those days was crossed only by a ford, there being no bridge — hence the name "Allansford".

Nullawarre means "Waddy Swamp" and comes from the aboriginal Nulla, waddy (or club) and Warre, swamp or water. The area was one of the scrubby swamps and the last of the full-blood aborigines camped in the area in 1880. The area was surveyed in 1860 and settled about 1871 by folk whose occupations were pit sawing and post splitting.

The Allan brothers also played a large part in the settlement of Warrnambool and were joined by the Bolden brothers, Manifolds, and others. Wool, tallow, wheat, potatoes, cheese, butter and fat cattle were produced, but it was not until 1884 that the provision of a lighthouse made the port safe for transport purposes.

Koroit is the aboriginal name for fire, and probably resulted from the volcano at Tower Hill, since the island there was so named. Rutledge and Atkinson were among the first to take up the fertile black land in the area which now produces potatoes and onions in abundance.

Hawkesdale was probably settled more recently and most of the large estates have now been divided into smaller farms of dairy cattle, beef or sheep.

Port Fairy's history probably dates back to 1810 when Captain James Wishart sailed up the river in his cutter, "Fairy". Mr Atkinson

took up more than 5000 acres at Belfast . . . as the little whaling village was first known. Whalers and sealers used the port which today harbours a picturesque fishing fleet in the Moyne River.

## Camperdown Division

Camperdown Division has shared a similar history.

The Manifold brothers settled at Camperdown in 1839 and took up sheep and cattle, their 40,000 acres being fenced by stone walls. The town was named after the battle of Camperdown in which Viscount Adam Duncan defeated the Dutch in 1797. The town, set out in 1853, was originally called Timboon, but today Timboon is a small town some miles south of Camperdown.

In 1892 Timboon acquired a railway, which helped to provide prosperity and security. It was the site of timber milling in the 1840's and by 1877 settlers began to farm the cleared land along the Curdies River.

Simpson was non-existent until quite recently. The impenetrable Heytesbury Forest covered the area down to the coast at Princetown. The Government's closer settlement scheme started clearing 70,000 acres in 1954 and opened the way for a flood of new settlers. The hitherto untouched wilderness became farmland and a new town was born and continues to thrive on dairying and beef activities.

At Cobden, Daniel Curdie, a doctor, had taken on in 1854 some 3640 acres, which he named Tandarook. He tried to buy another 1500 acres, but other squatters had similar ideas and a chaotic scramble followed the opening of new lands by the Government. Cobden, originally named Lovely Banks, was renamed after a British politician. There was already another Lovely Banks in the State.

Terang and Noorat shared similar beginnings. In 1840 the first dwelling in Terang was a hut on the east side of the lake. McKillop and Smith, and John Thomson were among earliest arrivals. Niel Black took up his Noorat estate in 1842 and built a palatial homestead, adding more and more land until, by 1860, he owned over 29,000 acres. Daniel Mackinnon settled Marida Yallock, near Terang, and the bluestone homestead still stands as a monument to the past, but very much a vital part of the present, for it still houses descendants of the original settlers.

Today, the region flourishes. Fast efficient road, rail and air transport link all areas. Gone are the hardships and fears. Gone also much of the flora and fauna. But despite man and his technology, the fascinating facts live on — in the minds or diaries of those who care to or can remember.

—ANNE FRASER.



## AUSTRALIA SPEAKS

(Continued from page 279)

The recent changes in age groupings provide a challenge for us all — to re-appraise our old ideas; to shake off complacent attitudes and to move forward with a fresh outlook towards a bright future.

My time as Australian Training Adviser has brought the privilege of meeting many people; of experiencing training courses throughout Australia, sharing ideas and methods and above all the enjoyment, friendship and support which has been shown me, which I feel confident will be shared with Audrey too. With a positive attitude, almost anything can be achieved.

"The only standard that counts is the amount of effort on the part of the individual". — B.P.

MARGARET COLEMAN.



# DOWN IN THE ARCHIVES

When in New Zealand recently I had opportunity to look at old documents at Guide Headquarters in Christchurch and to meet one of the pioneers of Guiding in that area.

She was actually one of the Girl Peace Scouts, for Guiding as such, did not officially begin in New Zealand until after 1923. The Australian Guide Handbook mentions the Girl Peace Scouts, but in a bound volume of "The Dominion Scout" for 1911 and 1912, I discovered that they had existed in Melbourne.

In the issue for December, 1911 I read, under the heading, **Melbourne** — "Miss Merna Taylor of Brunswick has formed a troop there, and wishes to keep in touch with our New Zealand Headquarters. She has been appointed District Secretary, so we may expect interesting reports from our Australian sisters each month in future".

The only other comment I found about them was in February, 1912.

"Miss Merna Taylor of Melbourne says: 'There is a great deal of misconception in Victoria about the Movement, and owing to the reported ill-behaviour of certain "Girl Guides" there, the Girl Peace Scouts will have an uphill fight for a time. She is certain, however, that as soon as mothers learn that the Movement is quite distinct from the Boy Scouts, that it aims at producing good, honest, honourable, moral and truly maidenly girls of their daughters, all opposition will be withdrawn". Colonel Cossgrove, as editor added the following comment: It is a great pity that the promoters of the 'Girl Guides' in Australia do not keep the girls entirely separate from the boys, as is done by the Girl Peace Scouts organisation in New Zealand.

The outlook of those days seems almost incredible to us now, but I came across a few items showing similarity to the problems of today. A letter from Col. Cossgrove in 1913, to the Secretary, Miss Ferguson said — "We are sorry to hear that the work takes up so much of your time, and trust that you will be able to secure the services

of a good assistant as soon as possible. It is the want of leaders we deplore. We could get thousands of girls if only we could get women to lead them". (Sound familiar?)

With reference again to lack of leaders, he writes in the "Dominion Scout" — "It is the intention that the Movement, being a girls' one, should be worked by the girls themselves as far as possible. A steady and reliable elderly girl should be placed in charge of each patrol as a leader, and the meetings might be held under the supervision of members of Council in turn, till a suitable lady could be found to take up the position as Scout mistress".

The military background of the Colonel was in evidence as late as 1923, as can be seen in the "Terms of Appointment" of the Commission of Appointment.

"I hereby constitute and appoint you to be Commissioner of the Auckland Province on the Active List of the our Girl Peace Scouts in the Dominion of New Zealand. You are required to discharge the duties of your office to the best of your ability. And I hereby request the Girl Peace Scouts in your command to obey you as their officer, in accordance with the promise made on their honour when they became Girl Peace Scouts.

In testimony whereof this commission is signed by me —

David Cossgrove, Chief Peace Scout,  
1st November, 1923.

This bound volume of "The Dominion Scout" contained a wealth of fascinating articles and comments, and there will be more of them later. For the moment — one of his "Little Tips for Camping Out" — Do not snore, it annoys the other fellows.

MARY LAMBIE,  
State Archivist.



## WORKING TO HELP FRIENDS

Since the February bushfires destroyed so much of Western Victoria, 1st Hamilton Guides have been raising money to help guiding people who sustained damage to homes and property.

Firstly we washed cars for our friends and neighbours, and our long suffering families.

Then we went around again to ask for sponsors for a swimathon. This was held at a private heated pool. The owner very kindly allowed us to use it free of charge. For up to 1½ hours we ploughed up and down, our energy slowly vanishing.

Some of us were fitter than we thought, others much less fit! Three of the 12 girls persevered to do over 100 laps. Several others topped eighty. Their sponsors had to part with much more money than they had expected!

KATHRYN STEPHENS,

1st Hamilton Guide Company.

## ADVENTURE PLAYGROUND

1st Hallam Guides had a picnic tea at Endeavour Hills adventure playground on Thinking Day.

After tea we played on the running log, tyre bridge, a wooden upright pole with notches to climb to the top, tractor tyre obstacles and a whizzy-go-round. Lots of fun — a few scares — great excitement.

JANINE BLASI,

1st Hallam Guide Company.

## CAMPING AT BROGUI PARK

1st Drouin Guide Company went camping to Brogui Park, a Guide campsite at Buln Buln East.

We had three patrols and we made camp ties, campfires, Guides Own, went round an obstacle course, tracking, hiking, joined in with another company's sing-song time, and took part in a Promise ceremony.

Now that "Kilara" has her camping permit we hope to go camping again soon.

JAN DAVIES,

1st Drouin Guide Company.

## THINKING DAY VISIT

Thirty-five Brownies, Guides and Ranger Guides and leaders from Castlemaine spent a weekend in Swan Hill as guests of Swan Hill District.

Highlights of the weekend included a campfire on the river bank and a "Sound and Light" excursion of the Pioneer Settlement at night and the Thinking Day ceremony in which Swan Hill Division members also took part.

After picnic lunch (supplied by our Local Association) at the Pioneer Settlement we all marched to the site of our Thinking Day Guides' Own.

The Guide Choir took part in the service and guest speaker was Jenny Shaw, a 1976 Rotary exchange student in Japan.

JENNILYN PRIEST, Guider,

1st Swan Hill Guide Company.

## PATROL LEADERS IN GIPPSLAND

Twenty-eight Guides from Heyfield, Maffra, Rosedale and Sale attended Patrol Leaders' Training held beside Lake Glenmaggie. Beautiful weather and the ideal surroundings of Sale Technical School property, "Munjara" contributed to a very successful venture.

Program included understanding the patrol and role of patrol leader, patrol activities and records. New games were played with energy, and outdoor activities such as rope ladders and bridges, tracking and nature were challenges to be enjoyed. The Guide Law, World Badge, and communicating through the Patrol System proved absorbing subjects when explored with interesting handwork. Guides learned to march and handle flags correctly during sessions on ceremonial.

Two highlights were Campfire on the sand with a full moon overhead and an inspiring Guides Own beside the water on Sunday morning as the sun was coming over the trees. New friendships added their part to a full and happy weekend.

B.L.

# TRAINING CALENDAR

**Commissioners and Unit Leaders** with the necessary experience are welcome to apply for ANY Training. Applications should be sent prior to the closing date and be accompanied by the training fee and a stamped self addressed envelope. Early application for all trainings is recommended. Training fee is \$3.00 unless otherwise stated.

## Stage 1 Training

**Geelong** Tuesday 21st, 28th June, 5th, 12th, 19th July, times 10.00 a.m. to 3.00 p.m. Applications to Mrs. A. Bell, 1 Layton Crescent, Newtown, 3220 by **1st June**.

**Headquarters** Weekends 25th-26th June and 23rd-24th July, times 10.00 a.m. to 4.00 p.m. Applications to Training Department, Guide Headquarters by **1st June**.

**Headquarters** Thursday, 21st, 28th July, 4th, 11th, 18th August, time 10.00 a.m. to 3.00 p.m. Applications to Training Department, Guide Headquarters by **1st July**.

**Maffra** Weekends 18th-19th June and 16th-17th July, times 10.00 a.m. to 4.00 p.m. Applications to Mrs M. Frawley, P.O. Box 641, Sale, 3850 by **30th May**.

**Warracknabeal** Weekends 18th-19th June and 16th-17th July, times 10.00 a.m. to 4.00 p.m. Applications to Mrs M. G. Creek, R.M.B. 358, Nhill, 3418 by **27th May**.

## Stage 2 Training for Warranted Leaders

**Dandenong** Weekends 18th-19th June and 16th-17th July, times 10.00 a.m. to 4.00 p.m. Dandenong North Special School, Heatherton Road, Dandenong. Applications to Mrs H. Lardner, 51 Bundeena Avenue, Noble Park, 3174 by **30th May**.

**Glenroy** Weekends 18th-19th June and 16th-17th July, times 9.45 a.m. to 4.00 p.m. Guide Hall, Cromwell Street. Applications to Mrs M. McCloud, 3 Glenview Road, Strathmore, 3041 by **27th May**.

**Sale** Weekends 13th-14th August and 10th-11th September, times 10.00 a.m. to 4.00 p.m. Applications to Mrs M. Frawley, P.O. Box 641, Sale, 3850 by **25th July**.

**Shepparton South** Tuesday, 24th, 31st May, 7th, 14th June, times 9.45 a.m. to 4.00 p.m. Applications to Mrs M. Murphy, 73 Balaclava Road, Shepparton, 3630, immediately.

**Wattle Park** (Note change in location from Canterbury), weekends 4th-5th June and 2nd-3rd July, times 10.00 a.m. to 4.00 p.m. Applications to Mrs F. Ludbrook, 5 Curnola Avenue, Doncaster, 3108 by **16th May**.

**Ararat** Weekends 9th-10th July and 30th-31st July, times 10.00 a.m. to 4.00 p.m. Applications to Mrs L. Morell, 6 Scott Street, Skipton, 3361 by **21st June**.

## Advanced Leadership — Stage 3 Training — for Warranted Leaders

**Bendigo** Weekends 16th-17th July and 13th-14th August, times 10.00 a.m. to 4.00 p.m. Applications to Mrs B. Whelan, 8 Hope Street, Kangaroo Flat, 3555 by **28th June**.

**Moorleigh** Weekends 25th-26th June and 23rd-24th July, times 10.00 a.m. to 4.00 p.m. Applications to Mrs E. Roberts, 11 Vasey Street, East Bentleigh, 3165 by **4th June**.

**Mildura South** Weekends 13th-14th August and 10th-11th September, times 10.00 a.m. to 4.00 p.m. Applications to Mrs A. Smith, 10 Barry Avenue, Mildura, 3500 by **22nd July**.

**Wangaratta** Weekends 18th-19th June and 2nd-3rd July, times 10.00 a.m. to 4.00 p.m. Applications to Mrs P. Miles, 14 Gayer Avenue, Wangaratta, 3677 by **30th May**.

## Changeover Training for Warranted Guiders moving over to Ranger Section

**Stawell** Weekend 23rd-24th July, times 9.45 a.m. to 4.00 p.m. Note: Would Guiders in Western Plains, Western Border and Wimmera Regions requiring Ranger training please make a special effort to attend this course. Applications and \$1.50 to Mrs. K. Morell, 6 Scott Street, Skipton, 3361 by **1st July**.

## Pack Holiday Training

**Tynong North** 9th-10th-11th July, times 6.00 p.m. Friday to 3.00 p.m. Sunday. Applications and \$8.00 to Mrs E. Roberts, 11 Vasey Street, East Bentleigh, 3165 by **20th June**.

## Campcraft Training

**Barree, Goulburn and Hume Regions** Sunday, 5th June, time 9.00 a.m. to 4.00 p.m. at **Benalla** plus weekends 6th-7th August at **Euroa** plus 24th-25th September at **Wangaratta** plus 22nd-23rd October — location to be advised. Times for all weekends 9.00 a.m. Saturday to 4.00 p.m. Sunday. Note: Cost for weekends to be advised. Applications and \$3.00 to Mrs M. Gorman, 33 Batten Street, Seymour, 3660 by **24th May**.

**North Central Region-Kerang Division** Weekends 25th-26th June (indoors), plus 13th-14th August plus 3rd-4th September plus 1st-2nd October (Guiders and Girls). Times for all weekends 9.00 a.m. Saturday to 4.00 p.m. Sunday. Note: Location and fee for all weekends to be advised. Applications to Mrs B. Whelan, 8 Hope Street, Kangaroo Flat, 3555 by **3rd June**.

## Campcraft Training

**Strathmore** Monday 11th, 18th July, 1st August (evenings) plus weekends 23rd-24th July (Guiders only) and 6th-7th August (Guiders and girls). Note: Location, fee and times of weekends to be advised. Applications to Mrs P. Reidy, 324 Geelong Road, West Footscray, 3012.

**South Metropolitan Region** Friday 15th, 22nd July, time 7.30 p.m. to 9.30 p.m. plus weekend 30th-31st July, times 9.00 a.m. to 4.00 p.m. daily plus 22nd-23rd October (Guiders only) plus 5th-6th November (Guiders and Girls). Times for October and November weekends 9.00 a.m. Saturday to 4.00 p.m. Sunday. Note: Cost for weekends to be advised. Applications to Mrs E. Roberts, 11 Vasey Street, East Bentleigh, 3165.

## Special Subjects

### GUIDERS — BIRD WATCHING DAY

Saturday, 4th June, time 9.30 a.m. to 3.30 p.m. at Nance Burnet's, **Glengarry West**. Note: Bring binoculars, bird books and a cut lunch. Applications and 50 cents to Mrs K. Marshall, 29 Hearn Street, Drouin, 3818 by 27th May.

## INCLUDING SEMAPHORE, AUSTRALIAN FLAG AND SINGING GAMES

**Headquarters** Thursday, 14th July, time 10.00 a.m. to 3.00 p.m. — Trainer Norma Sims — Applications and 75 cents to Training Department, Guide Headquarters by 23rd June.

## MAKING OF MUSICAL INSTRUMENTS FROM HOUSEHOLD DISCARDS

**Headquarters** Tuesday, 12th July, time 7.00 p.m. to 9.00 p.m. Applications and 50 cents to the Training Department, Guide Headquarters by 21st June.

## GUIDE PROGRAMMING — 8 POINT PROGRAM

**Surrey Hills** Monday, 11th July, time 7.30 p.m. to 10.00 p.m. St. Georges Church of England Hall, Mont Albert Road. Applications and \$1.20 to Mrs F. Ludbrook, 5 Curnola Avenue, Doncaster, 3108 by 20th June.

## BROWNIE INTERNATIONAL

**Wattle Park** Saturday, 13th August, time 1.30 p.m. to 4.00 p.m. Guide Hall, 1230 Riversdale Road. Applications and \$1.20 to Mrs F. Ludbrook, 5 Curnola Avenue, Doncaster, 3108 by 31st July.

# From the GUIDE SHOP

## NEW ITEMS

Metal Queen's Silver Jubilee badge .....	\$1.00
Past and Present (a Story of Our Guiding)	
— Revised edition 1977 .....	50c
Satin Gold Pen with Guide badge .....	\$1.85
Guide Notelets (three new designs) per packet .....	\$1.50
"Come on and Sing", Cassette — (Many favourites, some old and some new) .....	\$8.50
Have Fun with Nature, Nos. 1, 2, 3 and 4 .....	each 85c
(These four nature activity books are full of fascinating things to do — things which show Brownie Guides and Guides how to know and enjoy the world of nature).	
Coloured Gould League of Victoria Bird Charts, some with activity charts.	
Common Urban Birds .....	each 75c
Common Garden Birds .....	each 75c
Common Water Birds .....	each 75c
Common Farmland Birds .....	each 75c
Activity Charts .....	each 25c
Walk 1977 .....	75c

## Leisurecraft series:—

Macrame 1 .....	\$1.75
Macrame 2 .....	\$1.75
Pressed Flowers .....	\$1.75
Flowercraft .....	\$1.75

## FOR RANGER GUIDES

Ranger Guide Record Page (new) .....	8c
Ranger Guide Handbook — Parts 1 and 2 .....	\$1.95
Notes on Boating and Holidays Afloat .....	60c
Canoeing in Australia .....	\$9.50
Hints for Lightweight Camping .....	20c
Bushwalking and Camping (Paddy Pallin) .....	\$1.00
Let's Go Camping .....	90c

## Adventure Camping in Victoria:—

The Grampians .....	40c
The Victorian Alps .....	40c
Wilson's Promontory .....	40c
The Alps at the Crossroads .....	\$4.00
Living Place and Living Space .....	\$3.95
Help Yourself to Play the Guitar .....	\$1.00
Help Yourself to Paint .....	30c

## Modern Living Series:—

Your Looks .....	\$1.75
Your Health .....	\$1.75
Your Holidays .....	\$1.75
Your Safety .....	\$1.75
Your Food .....	\$1.75
Your Dress .....	\$1.75
Your Own Work .....	\$1.75
Nursing and Community Service .....	\$1.75
Trefoil Round the World .....	\$1.75
All Things Uncertain .....	\$2.00
The Chief .....	\$8.25
Baden-Powell — The Man who Lived Twice .....	\$1.65
An Australian Campfire Song Book .....	60c

**Congratulations to the recipients of the following:—**

### **Guider Long Service**

(30 years) Miss R. King, Mentone; Miss M. Mellor, Rosanna.

(20 years) Miss B. Gilbert, Warragul; Mrs H. Poppins, Yarraville.

(10 years) Mrs B. Tomlinson, Katandra West; Mrs M. Dawson, Frankston; Mrs P. Gould, Boronia; Mrs M. Campbell, Springvale; Mrs I. F. Allan, Wycheproof; Mrs G. Williams, Pascoe Vale; Mrs S. Caldwell, Pascoe Vale; Mrs G. Trencher, Invergordon; Mrs S. Reeves, Yarraville; Mrs A. Needs, Frankston; Mrs J. Hutchison, White Hills; Mrs V. Winzar, Goornong; Mrs C. Fenselau, White Hills.

### **Combined Long Service**

(10 years) Mrs L. Davis, Highett; Mrs W. Connor, Kangaroo Flat; Mrs J. Leishman, Bundoora; Mrs M. Schroeder, Murrayville; Mrs T. Ross, Dromana; Mrs J. Jackson, East Preston; Mrs B. Large, Blackburn North; Mrs M. Willgoose, Tallygaroopna; Mrs J. Whitney, Monbulk.

### **Local Association Long Service**

(10 years) Mrs M. Lawless, Katandra West; Mrs S. O'Mear, Katandra West; Mrs M. Miller, Bundoora; Mrs F. S. Jenkins, Springfield; Mrs M. Rowley, Pascoe Vale; Mrs J. Mongan, Pascoe Vale; Mrs P. Hurley, Invergordon; Mrs B. Withington, Boort; Mrs I. Gibson, Ferny Creek; Mrs A. Robbins, White Hills; Mrs T. Peake, White Hills.

\*

\*

### **Thanks Badge**

Bairnsdale Lions Club, Bairnsdale; Mr R. Parker, Belmont; Mr C. Perkins, Marshall; Mr D. T. Wallace, Belmont; Mr C. M. Cameron, Belmont; Mr R. W. Lamont, Highton; Mrs S. Davidson, Donald; Mr L. Taylor, Mildura; Mr J. Bennett, Merbein; Mrs T. S. Carlyon, South Yarra.

### **CHELTENHAM ANNIVERSARY**

All past members are invited to 1st Cheltenham Guide Company 50th Anniversary Celebrations.

Buffet tea and campfire.

5.00 p.m. to 9.30 p.m. on 28th May, 1977.

Guide Hall, Glebe Avenue.

For details please telephone 93 4308.

### **APPOINTMENTS AND WARRANTS**

A warm welcome is extended to the following:

#### **Division Commissioners**

Mrs A. R. Charlesworth, Box Hill North; Mrs D. A. Goudie, Geelong.

#### **District Commissioners**

Mrs W. I. Johnston, Hoppers Crossing; Mrs T. C. Bunting, Preston East; Mrs J. A. Barnes, Tallygaroopna; Mrs N. J. Glover, Dallas; Mrs A. Bier, Broadford; Mrs G. A. Cox, Rosedale; Mrs V. J. Quick, Armadale; Mrs C. J. Stephens, Koonung Heights; Mrs R. A. Callaway, Eaglehawk; Mrs B. McSwain, Warrnambool.

#### **Ranger Guider**

Mrs R. G. Kittelty, Echuca Extension Unit.

#### **Assistant Ranger Guider**

Mrs N. P. Cooling, Frankston Rangers.

#### **Guide Guiders**

Mrs S. Benson, 3rd East Ringwood; Mrs M. Walker, 1st Greythorn; Mrs L. C. Reither, 1st Terang; Mrs K. Bianchi, 1st Burwood; Miss L. Clough, 1st East Ivanhoe; Mrs I. Rossiter, 1st Gembrook; Mrs H. A. Wesson, 3rd Ringwood; Mrs K. R. Graham, 1st Yinnar; Mrs B. Challis, 2nd Leongatha; Mrs G. J. Fisher, 2nd Seymour.

#### **Assistant Guide Guiders**

Mrs B. Lock, 3rd Doncaster; Miss S. M. Ferrier, 1st Golden Square; Mrs R. H. Henwood, 1st Narre Warren North; Mrs J. Diesbecq, 3rd Ringwood; Mrs M. Shields, 1st Elwood.

#### **Brownie Guiders**

Mrs S. P. Turner, 1st Lake Boga; Mrs. L. Bianchi, 1st Burwood; Mrs B. Baxter, 2nd Ivanhoe; Mrs F. Atkins, 2nd Keysborough; Mrs D. Grant, 3rd Bundoora; Mrs E. J. Wilson, 1st Meenyan; Mrs W. L. Jackson, 1st Wonthaggi; Mrs A. S. Waight, 1st Keilor; Mrs J. Stewart, 1st Frankston; Miss P. A. Gray, 2nd Alphonington; Mrs C. Davidson, 2nd Ringwood; Mrs R. Stirling, 1st Yinnar; Miss J. A. Allison, 1st Eltham North; Mrs D. R. Brown, 3rd Brandon Park; Mrs G. G. Gordon, 2nd Brandon Park; Mrs. T. Saario, 3rd Leongatha; Miss H. Fettingling, 2nd Leongatha; Mrs M. Hooper, 2nd Seymour.

#### **Assistant Brownie Guiders**

Mrs H. R. Earl, 1st Morwell; Mrs P. Nicholls, 1st Frankston; Miss G. A. Butland, 1st Corryong; Miss L. S. McCasker, 1st Yallourn North; Mrs K. J. Ryan, 2nd Werribee; Miss J. C. Spicer, 1st Ringwood; Mrs J. A. Bartold, 1st Eltham North; Mrs G. V. Newman, 2nd Brandon Park; Mrs D. Bidmade, 3rd Leongatha.

## REGISTRATIONS

Bairnsdale Ranger Guide Unit; Ballarat Central Ranger Guide Unit; Canterbury Ranger Guide Unit; Heyfield Ranger Guide Unit; Lalor Ranger Guide Unit; Pakenham and District Ranger Guide Unit; Springvale Ranger Guide Unit; Meredith Ranger Guide Unit; Springvale North Ranger Guide Unit; Vermont Ranger Guide Unit; Wangaratta Ranger Guide Unit; Watsonia Ranger Guide Unit; Yarraville Ranger Guide Unit; 2nd Mortlake Pack; Lake Wendouree Rangers "B"; Ararat Ranger Guide Unit; Benalla Ranger Guide Unit; Bentleigh (Rambling) Ranger Guide Unit; Broadmeadows West Ranger Guide Unit; Central Doncaster Ranger Guide Unit; Echuca Ranger Guide Unit (Extension); Forest Hill Ranger Guide Unit; Hadfield Ranger Guide Unit; Invergordon Ranger Guide Unit; Karingal Ranger Guide Unit; Mt. Evelyn Ranger Guide Unit; Strathmerton Ranger Guide Unit; Swan Hill Ranger Guide Unit; Torquay (Sregnar) Ranger Guide Unit; Shepparton Ranger Guide Unit.

## RESIGNATIONS AND RETIREMENTS

We acknowledge with gratitude the services given by the following, whose Warrants have been returned:

### Division Commissioner

Mrs C. Keltie, Springvale.

### District Commissioners

Mrs J. P. Swinton, Warrnambool; Mrs S. Walker, Tallygaroopna; Mrs J. B. Beamish, Maidstone; Mrs D. L. Godfrey, Hoppers Crossing; Mrs L. G. Bamford, Preston East; Mrs C. H. Keele, Reservoir East; Mrs M. E. Drummond, Brunswick; Mrs R. T. Nancarrow, Pakenham; Mrs E. Humphreys-Grey, Ringwood East; Mrs F. J. Yarwood, Numurkah; Mrs W. H. Lister, Trentham Cliffs; Mrs T. W. Wall, Greensborough; Mrs J. A. Abblitt, Moyhu; Mrs A. N. Leyonhjelm, Jeparit; Mrs H. T. Potts, Hazelwood.

### Ranger Guiders

Mrs K. A. Loughrey, Reservoir West Rangers; Mrs R. Ogden, Daylesford Rangers; Mrs J. Bonnett, Shepparton Rangers.

### Guide Guiders

Miss L. M. Kelly, 3rd Hawthorn; Mrs G. McCorkelle, 1st West Reservoir; Mrs L. Grylls, 1st Dandenong North; Mrs G. W. Blandford, 1st Moe; Mrs W. Bicknell, 1st Tallygaroopna; Mrs L. Frost, 1st The Basin; Mrs D. W. Currie, 1st Mt. Evelyn; Mrs B. F. Daly, 1st West Doncaster; Mrs T. O. Norton, 2nd Moorabbin; Mrs R. Powell, 4th Doncaster; Miss J. M. Fookes, 3rd Morwell; Mrs C. Walsh, 3rd Caulfield; Mrs J.

Bennett, 1st Yarra Glen; Mrs R. G. Bullock, 2nd Alphington; Mrs D. F. King, 1st Highton; Mrs R. W. Lamont, 2nd Highton; Mrs S. E. Briggs, 1st Hastings; Miss J. Haigh, 3rd Preston East; Mrs K. T. Smith, 3rd Ormond; Miss S. Neyland, 1st East Ivanhoe; Miss S. F. Nankervis, 1st Preston.

### Assistant Guide Guiders

Mrs F. B. Burrows, 3rd Cheltenham; Miss A. Rae, 3rd Cheltenham; Mrs J. Hewett, 3rd Caulfield; Mrs R. C. Annand, 1st East Loddon; Mrs W. A. Jordan, 1st Fairfield; Mrs L. C. Reither, 1st Terang; Miss C. Pugh, 1st Highton; Mrs I. D. MacDonald, 2nd Highton.

### Brownie Guiders

Miss S. Williamson, 2nd Hawthorn; Mrs D. M. Dubens, 1st Gisborne; Miss R. Gleeson, 2nd Broadmeadows; Mrs D. P. Hughes, 2nd Keysborough; Mrs G. B. Ebbs, 3rd Horsham; Miss D. E. Cook, 1st Camberwell; Mrs R. D. Knight, 2nd Cheltenham; Mrs R. H. Williams, 1st Yarragon; Mrs L. Seater, 1st Olivers Hill; Mrs de Vroom, 3rd Moe; Mrs V. Norris, 2nd Colac; Mrs S. B. Bromham, 1st Fernv Creek; Miss L. E. Epstein, 4th St. Kilda; Mrs R. P. Hale, 2nd Highton; Mrs N. Hauff, 1st Shepparton.

### Assistant Brownie Guiders

Miss D. M. Stone, 3rd Bairnsdale; Mrs M. E. Gaunt, 1st Dartmouth; Mrs D. S. Grace, 4th Boronia; Miss K. Dickman, 4th Cheltenham; Mrs F. Atkins, 2nd Keysborough; Mrs E. J. Wilson, 1st Meeniyan; Miss M. J. Evans, 4th Highton; Mrs J. Stewart, 1st Frankston; Mrs R. W. Schneider, 1st Mortlake; Mrs H. C. Thompson, 1st Shepparton.



## PHILLIP ISLAND FARM HOLIDAYS

Spacious attractive surrounds, beachfront, horse-riding, hay-rides, animals, etc. 4 new log cabins. Recreation hall. Families, schools and groups. Telephone Mrs Jeffrey on (059)

