

VOLUME 54 NUMBER 8

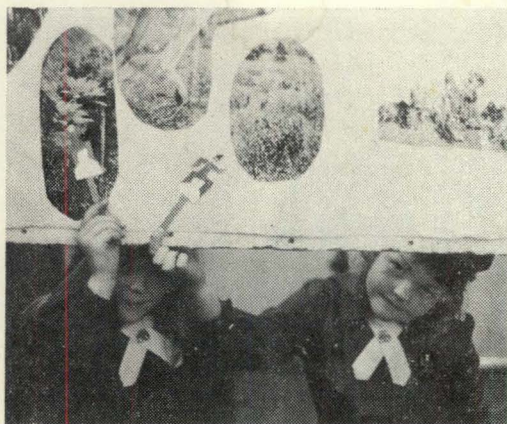
MARCH, 1977



# Matilda

GIRL GUIDES ASSOCIATION OF VICTORIA





### THANK YOU. GOD

Thank you, God,  
For the birds and shady trees,  
Thank you, God,  
For the busy humming bees.

Thank you, God,  
For misty cool sea-spray,  
Thank you, God,  
For lovely flowers so gay.

Thank you, God,  
For pretty blossoms in the Spring,  
Thank you, God,  
For everything.

ROBYN WOOLCOCK,  
1st Montrose Brownie Pack.

## In this issue . . .

	Page
April Action .....	222
Asia/Pacific News .....	236
Baden-Powell Camp Reunion .....	225
Dandelion Song .....	240
Down in the Archives .....	239
Guide Day at Jamboree .....	227
Guide Shop .....	242
Know Your Regions .....	237
Letter from Chief Guide .....	221
Local Association Section .....	233
Matilda Subscription Form .....	228
Notices .....	222, 226, 235, 236, 239, 242, 244
Our Chalet .....	223
Personnel Changes, etc. ....	243
Reporting from Russell Street .....	220
State Commissioner's Letter .....	219
Training Calendar .....	241
Training Pages .....	229-232
Unit News .....	226, 234, 238
Water — Vital Resource .....	224
Wildflower Diary .....	225
Youth Action .....	235

# MATILDA

PUBLISHED BY THE GIRL GUIDES ASSOCIATION OF VICTORIA  
20 RUSSELL STREET, MELBOURNE, VICTORIA, AUSTRALIA, 3000

State Commissioner: MRS. F. S. GRIMWADE

State Secretary: MISS M. W. BARR

Assistant State Commissioners: MRS. D. O. OLDFIELD

MRS. A. J. TURNBULL

Editor: MRS. L. I. RICHARDSON, 31 Hampshire Road, Forest Hill, 3131



## *From our State Commissioner*

I have heard happy reports of the Summer Training Week. Whilst all those who were present gained much from this week, it was disappointing that numbers were not greater. January is always a busy month for families though.

Last night Fred and I attended Kyneton District Annual Meeting. It was a very happy evening, commencing with a picnic tea under the trees by the Guide Hall. The guest speaker was Mr John Van Groningen, Superintendent of Pentridge Gaol. He was quite fascinating and the message he had for us all was that no member of the community can afford not to be involved in the welfare of those around them. The cost of keeping a prisoner in Pentridge or a Youth Training Centre is incredibly high — but there is also a vast cost to the community when it includes many individuals with anti-social attitudes. Psychologists can relate the behaviour of individuals to their environment during their early childhood — so as parents and neighbours we hold the key to the standards of the next generation. My interpretation of all he had to say was "Go out and become a Guide leader — you cannot afford not to".

We are missing the children now they have returned to school, but I must admit it is rather pleasant to be back behind my desk rather than in the kitchen.

New Units now forming as the result of the Age Group Changes will have had their first meetings during these last few weeks and we wish them every success. There are bound to be some problems occurring in districts as the changes take full effect, but I hope these will soon be overcome and more girls will be able to benefit from all that the Ranger program has to offer.

My love and best wishes to you all — particularly to those who have suffered in the fires.

*Joan E. Grimwade*

Dear Everyone,

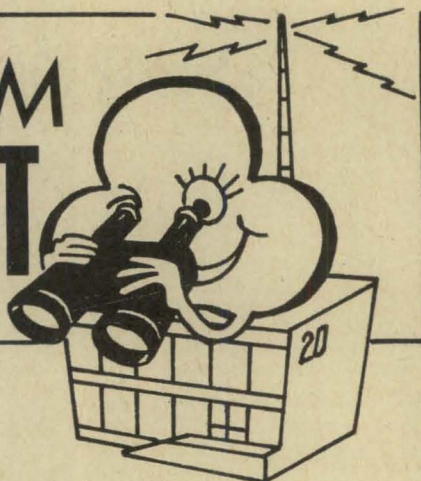
FIRE, is a word which strikes terror at the hearts of all country people. We have all been shocked by the reports of the tragic bush fires which swept through the Western part of Victoria and our thoughts have been with all those who have lost so much, especially members of our Guide Family.

It is in a disaster like this that we see the strength of the Guide family. It was heart-warming to see how many people made enquiries about ways they could help and how we were kept posted of the situation by Guide folk in the region. As the reports filter through we are heartbroken to learn of members who have lost properties and stock. Lingbogol Campsite too was burnt, but all buildings were saved.

We have started a fund to assist those of our members who have lost so much in the fires and I am sure that Brownie Guides, Guides and Rangers throughout the State would like to have some special effort to raise money for this fund and so help their less fortunate sisters.

On a happier note, I wish to thank all those leaders and girls who gave up so much time during the summer holidays to participate in Youth Action. I am sure everyone greatly enjoyed the displays of work and camp fire singing put on by different units. To those of you who sewed an animal on the "Glenaroua Homestead" farm scene — thank you very much. I do not think Fred would have been very pleased to see more rabbits than sheep though!!

# REPORTING FROM RUSSELL STREET



## BUSH FIRE RELIEF:

All members of our Guide family have been deeply shocked and saddened by the disastrous bush fires which caused so much distress and loss in Western Victoria. Messages and kind thoughts have come in from our Chief Commissioner and from other States, as well as from our Victorian members, and already a number of donations in cash and kind have been received. If you wish to help, send your contributions to Headquarters now.

## BRITANNIA PARK — CONVENER:

Mrs J. B. Tucker has now completed her five-year term of office as Convener of Britannia Park and we thank her and her committee for all the care they have given to this lovely property of ours. We welcome as her successor Mrs D. G. Sargood, of 35 Tourello Avenue, Hawthorn East, 3123, telephone 82 2924.

## CALLING ALL BROWNIE GUIDERS:

It is expected that the Brownie Guiders' Conference will be held on **Saturday, 22nd October**, at Wesley College, St. Kilda Road, Prahran. Note this in your diaries now and keep a 'look out' for further news of this important event.

## BROWNIE GUIDE SECTION — WATER SAFETY BADGE:

On the recommendation of the Royal Life Saving Society two alterations have been made in the syllabus of the Brownie Water Safety Badge. Parts of these clauses have been deleted because they can prove dangerous.

Delete Clause (b), which states: "Demonstrate an approved manual method of artificial respiration for at least two minutes".

Delete the words 'either' and 'or behind' from Clause (c) (1) so that it reads "... with outstretched arms from in front".

## LEISURE TIME ACTIVITIES:

There will be Leisure Time Activities for Guides and Brownies at Headquarters on 10th and 11th May. See application details in April "Matilda".

## THE QUEEN'S SILVER JUBILEE:

It is expected that a special badge to commemorate our Queen's Silver Jubilee will be available after the Royal Visit later this month. Keep your eyes and ears open for further news.

## PERSONNEL CHANGES:

With the start of a new year, there are always many personnel changes, but this year even more are expected because of the age-group changes. Commissioners, be sure to notify Headquarters (not the Editor of "Matilda") of all changes without delay so that "Matilda" reaches the right person promptly.

## TWO INTERESTING OUTINGS FOR GUIDES:

Open Day at the Air Base at Laverton will take place on Sunday, 27th March, from 9.00 a.m. and a special invitation has been issued to members of the Guide Movement. Contact Guide Headquarters for further information.

Have you thought of suggesting a visit to Melbourne's Planetarium to your Guides? There is a special session there every Friday night. Contact 663 4811 or 663 4815 for further details.



## OUR CHRISTMAS CARD FOR THE CHIEF

*I have "doors" in many different parts of the world. Then the following year I spent the money on FOOD for "Hampton Court Palace" — i.e., "Hampers for Hampers" entertaining Guide friends.*

You will all be delighted to know that the sum of \$551.96 was sent to the World Chief Guide as her Christmas Card from Australia. \$70.68 of this came from Victoria, and we thank all of our members who remembered our Chief in this way. Here is Lady B-P's reply:

*"Dear Miss Wood,*

*I have received BOTH your letters, and cheques — one for £244.25p, and the other for £87.18p, this very week, and I write to say an enormous "THANK YOU" for this most generous gift from all your dear kind and generous Guides and Guiders!*

*I really cannot find words to express what I feel about this further gift from all my many old friends in different parts of Australia.*

*I presume it is a recurrence of that "Ice Cream Fund" that was started (by Mrs Curtis Otter) all those years ago when I had done one of my TOURS and went into hospital for a gall stones operation.*

*That year I spent the money on paying for Guide Books in SPANISH for all the countries in South America and the slogan became "Ice Creams into BOOKS!" The next year when it happened again I used the money to pay for DOORS of Guide buildings that I had "opened" officially and the slogan became "Ice Cream into Doors" and*

*I cannot express enough of my GRATITUDE for this great financial help that you have all given to me again, and I shall spend this handsome gift on defraying the cost of some weeks spent here in my new home — a NURSING HOME where I am well looked after and SAFE.*

*It was a sadness to leave "Hampers", but one cannot be sure of domestic help these days, and with diabetes and OLD AGE having taken away the use of my LEGS I really need looking after.*

*So now I do say my very cordial THANKS to all those generous KIND FRIENDS who have thought of me and sent me this very handsome further gift this year.*

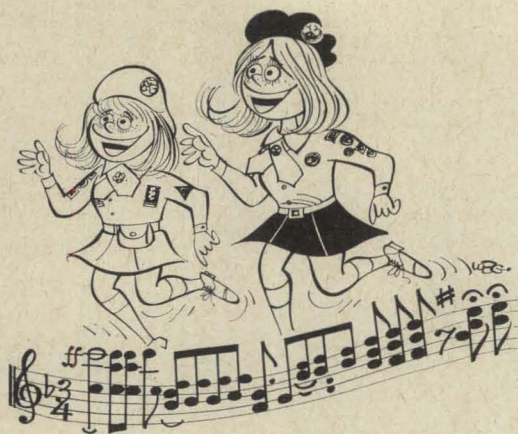
*The cost of everything is rising steadily and this help is tremendously valuable and appreciated.*

*I send you my very warmest thanks in full measure and running over! And always, of course, my best wishes for continued growth and prosperity in all Guide doings all over your great land.*

*I do think of you all so often, remembering my busy and successful tours years ago!*

*Yours very sincerely,*

*Olivia Baden-Powell*



For April Action last year Rupanyup Brownies held a Bike-a-thon and a fete.

The Bike-a-thon started at 4.00 p.m. on Friday. Eighteen Brownies rode their bicycles 30 laps of the football oval. Mums and Dads came to watch. Although they were very tired after the ride, the Brownies were delighted with \$139 they had earned.

Proceeds from their fete added another \$56 to the total amount they raised for April Action, 1976.

\* \* \*

In another part of the State two Commissioners were invited to join the Brownies in their Bike-a-thon. As neither had ridden a bicycle for many, many years, they tried to find excuses for not taking part. However, all obstacles were overcome and as "B Day" dawned, mild, overcast and seemingly windless, both Commissioners lined up at the starting point (much to the surprise of the Brownies and their Leaders) with bikes that would never have gained a roadworthy certificate, and very little recent practice. Families and sponsors were sure these two "oldies" would never make the first kilometre. Thankfully, a police escort (a Brownie dad) out of town saved the embarrassment of having to give any hand signals as, had this been necessary, both would have lost balance and the Movement may have found itself with two incapacitated Commissioners for several weeks.

What seemed a windless day in town certainly had us huffing and puffing as we pushed those pedals into the headwind down

# April Action

the country road, and both were hopeful that the wind would not change direction before the homeward stretch.

Two hours and 12 kilometres later two still surprisingly fit Commissioners (and by then quite expert at handling the cycles) arrived safely back at the Brownie Hall. The only concession was a sneaky detour down a back street to avoid the local overpass, as rather doubtful brakes may have had disastrous results on the downhill run. Most surprised, apart from the two concerned, were family and sponsors, who had to pay up to the tune of about \$50.

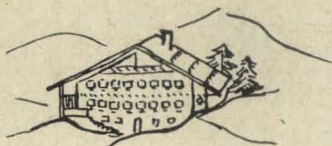
**Will you be holding a Bike-a-thon for your APRIL ACTION this year, or will you do something quite different?**



## QUEEN'S GUIDES HONOURED

Wannon River Trefoil members met recently to present a board to Hamilton District Girl Guides on which to record the names of girls in the district who have earned the Queen's Guide badge.

Guides and Leaders from 1st Hamilton and 2nd Hamilton Companies presented items and campfire songs and each guide was given a replica of a Queen's Guide badge as a memento of the evening.



# OUR CHALET

## OUR CHALET

"Gott behute dieses Hus  
Und All die gehen yn und us"  
God bless this house  
And all who go in and out.

These words are engraved on the wood over the entrance door to Our Chalet. The story of Our Chalet goes back to the World Conference in 1929, held in Holland, when the desire was expressed to have a World meeting centre. A kind friend of Guiding, Mrs. Storrow, immediately offered to give the house — a condition being that the house be in Switzerland.

A long search ensued for an appropriate place for such a house. On visiting one chalet in Grindlewald, the smell of old cheese was overwhelming, so it was decided that this was definitely unsuitable. Another chalet at Kandersteg also proved unsuitable, as "it was considered dangerous to have a chalet in the "same place as the Boy Scouts".

The search continued to find a place that offered mountains suitable for ski-ing, walking and privacy, where visitors would be able to find peace.

Shortly after the World Conference held at Foxlease, Falk, a former Guider in Charge at Our Chalet, visited Adelboden and discovered the place where Our Chalet is built. The valley was suitable for ski-ing, walking, and was not visited by vast numbers of tourists. However, the chalet needed to be built in a place accessible to everyone. The site chosen for the Chalet was on the opposite side of the valley to the town of Adelboden. From the place that Falk decided was suitable, she had superb views of the surrounding mountains. She immediately cabled Mrs. Storrow in America, and was given permission to go ahead with the plans for building the Chalet.

There was great interest in the progress of the Chalet, and various items were donated by Guides for Our Chalet. These included furniture, kitchen-ware and linen.

There is a Swiss custom that when the roof is put on a house, the builder gives a party for all the workmen involved in building the house. As it was winter, and there were no windows in the Chalet at that stage, celebrations were held in the village. From that time friendship between Chalet staff and the villagers has continued to grow, and the villagers still take a great interest in Our Chalet.

Two months before Our Chalet was opened in July 1932, Mrs. Storrow visited Adelboden and decided she would like a small chalet of her own. The baby Chalet was built close to Our Chalet and, somehow, it was completed before the opening of Our Chalet.

Since Our Chalet was opened, many thousands of Guides from all over the world have stayed there. It is a special experience staying there, either for a few days, or to participate on a session. During the year a variety of sessions are held, including ski-ing, walking and mountain climbing. It is so peaceful watching a sunset, with the colours reflected on the snow, particularly after an energetic day ski-ing. Seeing the valley in Spring, everything seems to be awakening after a long sleep. There are flowers in the fields and along the mountain tracks. After a long climb up a mountain track one appreciates the silence and superb scenery. In the distance there are a few snow-capped peaks, waterfalls, cows grazing with their bells ringing, and many visitors to Our Chalet have enjoyed the peace and serenity of the valley. Whether it be Winter or Spring, Summer or Autumn, one will always find fun, friendship and peace radiating from Our Chalet.

When Our Chalet was opened, Baden-Powell challenged the Chalet to become a school of goodwill and understanding among the future women of the world, so that they should go forth to spread the idea of comradeship with others, regardless of any difference of country, creed and class. Thus the Chief Scout set the program of the Chalet.

W.S.

# WATER - Vital Resource for Life

"No other single factor could improve the well-being of the world's people more than the provision of accessible and clean water", says UNEP expert Letitia Obeng.

Seventy percent of the world's people are now without safe and dependable water supplies. One consequence is that water-borne diseases kill 25,000 people every day. A recent survey of eight developing countries found that 90% of all child deaths could be avoided by safe water supplies and hygienic sanitation and sewage disposal. "The most urgent environmental need in the developing world," says a recent UNEP report, "is better sanitation. Through lack of it four-fifths of the world's population is constantly exposed to a range of diseases encouraged by dirty water and filth"

Water is vital not only for growing food but also for cooking, drinking, washing, power, industry, transport and leisure. But with all these benefits, water also brings dangers. Irrigation, for example, carries with it the danger of spreading water-borne diseases to new areas.

"The key to the water problem," says UNEP expert Dominique Larré, "is to maximise and spread the advantages of water while minimising and containing the disadvantages. And this adds up to sound environmental management of this vital resource." Of all the water in the world only 1% is available for human use. The rest is locked up in the ice-caps, oceans and under the ground. And most of that 1% is polluted.

Even so, there is enough water in the world to meet the needs of even a doubled world population, according to UNEP. But it is not evenly distributed. "Water is rarely in the right place at the right time," says Larré, "so the essence of the problem again is sound management of water."

At present, industry contaminates 160 cubic kilometres of water per year and this, on the average, contaminates 25 times its own volume when put into the rivers and seas. For example, it takes 40 litres of water to produce one can of vegetables, 10 litres to

produce one litre of petroleum and 200 cubic metres for one ton of steel.

Water quality is also wasted and contaminated in the home. In urban areas of the developed world 40% of all water is used for flushing toilets. In one year the average user of a flush toilet contaminates almost 60,000 litres of clean water to dispose of 600 litres of body wastes.

"Careless waste and inefficient use of water," says UNEP's Letitia Obeng, "are almost a crime against those who do not have water. We need to develop a healthy respect for water on a global basis."

(N.B. The health and hygiene elements in most Scout programs need to be emphasised and wide use made of the "Clean Water" training charts in the World Bureau/World Wildlife Fund/ Bata "Show and Do Conservation Kits" in the hands of all national headquarters."

(From the United Nations Environment Program (UNEP), based in Nairobi, Kenya — World Scouting NEWSLETTER".)

## 1977 PATROL CHALLENGE

There is still time for your Patrol to register as a "1977 Challenge Patrol".

Details of this challenge were given in last month's "Matilda", but Patrol Leaders can still write to:

1977 Patrol Challenge,  
Girl Guide Headquarters,  
20 Russell Street,  
Melbourne, 3000.

The Patrol Leader needs to include the name of her Patrol and Company and, so we can send the first Challenge, a STAMPED ENVELOPE addressed to herself.

—YVONNE JAMES.



## *Wildflower Diary*

Many of today's children have few opportunities to learn about Nature first-hand. Parents and teachers are often themselves at a loss to answer queries on animals and plants. Many books are available, but most are aimed at adult readers.

Now there is a perfect little book available for children and grown-ups alike which describes in simple language the beautiful wildflowers of our State.

Produced by the Native Plants Preservation Society as a memorial to Miss Winifred Waddell, the **Wildflower Diary** is a valuable addition to every unit library — school and home library as well.

The text is taken from Miss Waddell's nature notes in the Junior "Age" and is edited by Jean Galbraith, with delightful detailed sketches by Elizabeth Cochrane.

With twenty-five years teaching experience, Miss Waddell had a deep understanding of children. Her notes are simple and concise, and are easily understood.

Since the diary is categorised into seasons, months, and plant types, the reader can follow the colourful procession of native plants throughout the entire year.

If your unit can afford only one book — I suggest this be the one. Its wealth of information includes a chapter on "Protected Plants" — an area with which, unfortunately, too many of us are unfamiliar.

Respect for the out of doors and conservation of flora should be encouraged by all leaders.

This little book will help us all to better understand our environment and how we can help preserve nature for generations yet to come.

—ANNE L. FRASER.

["Wildflower Diary" should be available shortly from the Guide Shop.]

## **Baden Powell Camp Reunion**

Guides who represented the Australian Guiding Movement at a World Camp in England in 1957 held a reunion in Canberra early this year.

Thirty-two of the original contingent of 49 attended. They came from all mainland States except Western Australia and the Northern Territory, and one came all the way from New Zealand.

Contingent members were particularly honoured and delighted that the three leaders — Joy Stacey, Peg Barr and Jean Tucker — were able to attend the reunion. Joy Stacey (always known affectionately by a totem name given her by the contingent — "Immunga") is now State Secretary of New South Wales. Peg Barr (totem name "Jinki") is State Secretary for Victoria, and Jean Tucker of Port Vincent, South Australia (known as "Canara") is Division Secretary.

The occasion of the 1957 World Camp was historic, as it marked the centenary of the birth of Lord Baden-Powell.

The camp, in the grounds of Windsor Castle, was attended by 4000 Guides from 68 countries. The Australian contingent was away for six months; during this time they stayed at Our Chalet in Switzerland for two weeks, visited Netherurd Hall and Waddow, and many were fortunate enough to stay at Foxlease.

The Australian Contingent was billeted by Guides in various parts of the country, and all agreed the hospitality shown by sister Guides overseas was superb.

At the Baden-Powell contingent reunion dinner, held in the Canberra Yacht Club, Miss Stacey read greetings from the 1957 State Commissioners who had helped in the selection of girls for the contingent.

Most of us have had occasional contact with one or two others, but this was the first time so many had gathered together; friendships were rekindled after 20 years, and we re-lived the Guiding experiences we had shared.

We all thoroughly enjoyed a movie taken on the 1957 trip. This provoked a great deal of hilarity and prodded memories — many times the projector was stopped for a "still".

In spite of the hot day, everyone enjoyed themselves immensely at a barbecue to which husbands and children had been invited and there is now another generation of young people who refer to three ladies as Immunga, Jinki and Canara.

Val High, the only representative from Western Australia, could not be traced in time for the reunion, and any information as to her whereabouts would be appreciated.

—WILMA BEST.



Regrettably, we Guiders do not have the pleasure of seeing how "our" girls "turn out" in later life, so I would like to share a few of my thoughts on meeting, 20 years after, the members of the Australian Contingent which spent six months living and travelling together in B-P Centenary Year 1957.

It was great fun to get together again, catching up on what the in-between years have brought to everyone, meeting their families, recalling happy memories and laughing over amusing incidents (would you like to take care of 16 attractive Rangers in Paris?). For we Guiders the really heart-warming experience of our Reunion was our deep pleasure at what fine young women each and every one of those members of that very special Guide family have become. So many had chosen community-oriented careers — nursing and teaching topped the list — and all seem to be fulfilling useful happy lives, either in worthwhile jobs or in being good wives and mothers. Those whose commitments allow are back in the Movement as leaders or supporting Guiding in some other way.

If you ever get downhearted and start wondering whether your efforts with your girls are worthwhile, don't! I, for one, can assure you from first-hand experience that they are. I can also assure you that contributions made by Districts to help a young person to share in an overseas Guiding adventure are a sound investment.

PEG BARR.

## LEADERS' HIKE

BROWNIE LEADERS, GUIDE LEADERS, RANGER LEADERS, COMMISSIONERS.

Did you hear about the last terrific Leaders' Hike? If you missed out last time, or had such a fantastic time that you want to come again, then here is your opportunity!

**A HIKE FOR LEADERS** will be held on the weekend 30th April-1st May, 1977. We will be hiking in the Powelltown area, through Starling Gap, to the High Lead, following the abandoned logging tramways, for a distance of about 16 miles. Everything will be carried in packs and we will be sleeping out in hike tents.

**TRANSPORT** to and from Powelltown will be by bus. We will leave Guide Headquarters at 8 a.m. Saturday, 30th April, and return about 6 p.m. Sunday, 1st May.

**COST.** Bus fare only — \$5. You provide all your own equipment and food.

**APPLICATIONS** to Mrs Ros Smithers, 39 Kooyong Road, Armadale, 3143 — telephone 509 5614.

Send your name, unit, address, telephone number, payment of \$5 (cheques payable to R. Smithers) and a stamped self-addressed envelope (for return of kit list and further details).

**DO NOT MISS OUT ON A WEEK-END OF ADVENTURE, FUN AND FELLOWSHIP. APPLY BEFORE 7th APRIL.**

## RALLY AT UNDERBOOL

Mallee Division Guide Rally was held at Underbool and the theme was "Mini Olympics".

Guides and Brownies from Murrayville, Patchewollock and Underbool took part in races in the morning.

After a barbecue and salad lunch fun resumed with treasure hunt and sack races.



## "OUR" DAY AT SCOUT JAMBOREE

Cressy Guides went to the Scout Jamboree on Guide Day.

We left home at 8.10 a.m. and travelled by trains and bus to reach the Jamboree by 11.30 a.m. We found a shady spot and had lunch before starting to look around the camp.

We had not gone far when a hungry scout grabbed us and said that unless he took a guide to his patrol for lunch he was not going to be given any. Our leader, Jacaranda, felt sorry for him, so we **ALL** went. In an activities book we had each been given as we entered the Jamboree site, we were asked to do 12 activities which were:

1. Find a Scout from a country where English is not the national language. Write down three of the following in his language . . . write how it sounds: Be Prepared; What is the time please? What do you like about Australia? Good Morning; Good Night.
2. OF COURSE you know the Guide Laws numbers 1, 3 and 4. Write them down against their number. Find out the Scout Laws 1, 3 and 4. (We knew ours . . . but the scouts had a book!)
3. Do a good turn for someone in camp. Sew on a badge, show a scout how to iron, help prepare a meal . . . use your imagination. (We sewed on badges with a little help from leaders, and one of our guides found a woggle. Fortunately it had the owner's name and troop on the back and she was able to return it.)
4. Sketch the World Scout Flag and write down the colours. (They are purple and white.)
5. Sketch one of the following: Main Gate, a Camp Gateway or the Radio Tower.
6. Visit some of the displays and activities. Write down two of them. (We saw the display on Guiding and Scouting, the Aboriginal Display and the Police Display. We had our photograph taken in front of the New Zealand gateway.)
7. Obtain a recipe of a National Dish you could use for a foreign meal in Camp. (We all got one of these, and our leader spoke to a scout from Cyprus, and she got one too.)
8. Find a scout from every State and record the towns from which they came. (We all enjoyed this one, and most of us now have penfriends, some from Sri Lanka and Japan, too.)
8. Do a litter good turn . . . what did you do? (Of course, we all picked up some rubbish, but we noticed that even with so many people the camp was very clean.)
9. What is the purpose of the "wire in the sky" north of the Jamboree site. (The wire was the power cables for the radio station and telephones.)
10. Join a scout patrol on the fitness track or handicapped orienteering and complete it with them. Get Scout Patrol Leader to sign. (We just did not have time for this one.)
12. Get your patrol name mentioned on the camp radio. What time did it get presented? (We had no time left for this one either.)

We took our Activities books to the Guide Tent and had them stamped. Then we went over to the Scout Shop and bought Jamboree badges to take back with us. It took us four hours to get home because our trains did not connect.

**We had a long day, but it was worth it.**

We would like to thank our leader, Jacaranda, our Unit Helper and our District Commissioner for taking us to the Jamboree.

—ANDREA McNAUGHTON  
1st Cressy Guide Company.



## SUBSCRIPTION FORM — "MATILDA"

**Note:** Copies of "Matilda" will be automatically issued free to:— Each Commissioner (but not Assistants), Each Guider in charge of a unit (but not Assistants), and certain other personnel.

PLEASE NOTIFY CHANGES OF PERSONNEL AND ADDRESS PROMPTLY.

**GIRL GUIDES ASSOCIATION,  
20 RUSSELL STREET, MELBOURNE, 3000.**

**SUBSCRIPTION: \$5.00 per annum post free (single copies from H.Q. for 50 cents).**

Please arrange for "Matilda" (commencing with the May, 1977 issue)

to be sent to the following:—

Mr., Mrs., Miss and Initial	Name	Address	Postcode
-----------------------------------	------	---------	----------

(BLOCK LETTERS PLEASE)

For additional names and addresses, please attach extra sheet.

Ordered by:

Address:

Cheques or Postal Notes (to be made payable to Girl Guides Association) enclosed for \$.....

**SUBSCRIPTIONS PAYABLE IN ADVANCE DIRECT TO HEADQUARTERS  
20 RUSSELL STREET, MELBOURNE, 3000.**

## SELECTION DAY NERVES

Twenty-four rangers and young leaders gathered at Headquarters early this year so that a committee from International Department could select one of us to represent our association at the Commonwealth Youth Enterprise, 1977.

At first the atmosphere was tinged with nervousness, but we were soon made to feel at ease. Group discussions were initiated and personal interviews followed.

Finale for the day was a campfire at which the girls performed amusing items with an Australian flavour.

Altogether, this selection day was interesting and enjoyable. I recommend all young members of our movement apply for international events in the future and forget about Selection Day Nerves.

—PAMELA SQUIRE.



---

# TRAINING PAGES

---

## VISITING STRANGE PLACES or MAKING NEW FRIENDS

"Oh, good," I thought, "I have arrived a few minutes early. I have time to freshen up my make-up and check the angle of my beret." I looked around for the hall, there were buildings everywhere — now **which** one is the meeting in. Even if I choose the right hall, **which** door? (Have you noticed how many outside doors there are in your hall?)

Just as I was gathering up my bags and keys, one of the doors swung open and two uniformed figures came bursting through. My welcoming party. They greeted me warmly and we exchanged names. I was invited in to meet the rest of the members, who were gathered into small groups, I was taken around and introductions were made. The Guiders stayed in the background, but waved to me as I entered the hall — we were well known to each other. After I had met all the members I was taken to the leaders and my welcoming hostesses excused themselves, returning to their respective groups. How quickly I felt at ease, the warm friendly greeting was the beginning of a most enjoyable evening.

\* \* \*

How careful we must be to ensure that any guest in our unit, Local Association, Guiders' Meeting, Camp, Pack Holiday or District Annual Meeting is shown courtesy and consideration. All members of any such group should feel responsible for the comfort of their guest. One or two people may be delegated to act on their behalf at times, but **everyone** should be alert to the fact that they too are hostesses.

I once read that "to be a perfect hostess, prepare well in advance, set the scene, enjoy the company of your guest".

### Preparation

Consideration begins with the thought "Let us invite . . ."

- Choose a date and time to suit guest as well as hostesses.
- Send invitations well in advance.
- How will she be travelling, tell her she will be met at the bus, railway station, or, if travelling by car, where to park her car.
- Give clear directions for location of your hall, camp or pack holiday site.
- Plan to have representative hostesses to meet the guest at the gate — at night a torch would be helpful.
- The program should be planned to include your guest as much as possible, allowing her to meet all members of the group. If the hostesses are young and very active your guest may not be — she will appreciate a moment to sit and take in the scene. At a unit meeting this could be the time to look at a unit treasure, static display or have refreshments.
- Is the guest expected to contribute to the program? Make this clear beforehand —
  - a game?
  - a campfire story or song?
  - a handcraft?
  - a particular skill?
  - a speech?

She will need to know of any particular topic or theme — how long she will have — the age of the members — the position in the program.

Plans should be made for 'setting the scene'. Include a working sheet and members responsible for each item.

## VISITING STRANGE PLACES or MAKING NEW FRIENDS

### Setting the Scene

**In camp or pack holiday** will your guest be joining you for a meal or staying overnight? She will need a place to sleep and a place to eat, will she be comfortable? (Extra bedding, eating utensils will need to be provided if she is not bringing her own.)

**In the meeting place** (unit, Local Association, District Annual) perhaps an extra effort in cleaning would not go amiss, but add some other extras too. A cloth for the table, flowers, static display or unit activities. Seating (dusted?) arranged carefully to suit needs. Where will guest and representative hostess/es sit, is there room for people to circulate and meet their guest? How will you serve refreshments? Are direction notices needed?

An evening meeting will need lights switched on early.

Clean washrooms and toilets, open early. Light on. Is the way clear to their location? I well remember a dark stumbling journey in a narrow passageway over scattered objects from a bottle drive. I collided with some returning Brownies, in a near state of hysteria, who told me there were red-backed spiders **there**, not to mention other crawly things.

In that dark, tumbled-down place the imagination did not need much to fire it. I hoped the Mayor (a woman) and the M.L.A.'s wife would not have to take the hazardous journey.

A guest who has travelled far would appreciate an opportunity to freshen up before the meeting.

### Enjoy the Company of Your Guest

Have everyone ready to circulate and, if not a great crowd, each should have the chance to speak with her. No one person should monopolise her. Your guest may be a little shy, or perhaps not a great conversationalist, she will appreciate it if you introduce the topics occasionally.

Never allow her to be left standing, or sitting, on her own in the hall. This should never happen if the last person talking to her calls someone else over before leaving her. If spending time in camp or pack holiday with you then the courtesy for a private

house guest applies — she will probably enjoy a moment to herself.

Be alert to the moment when your guest wishes to depart and allow her to do this graciously. She, as the 'perfect' guest, will want to say goodbye to all and to thank them for their hospitality — she will appreciate an escort to her car, but the hostesses should neither hurry her nor delay her — especially the latter if she is catching a bus or train. Your guest will not want to break into a sprint to catch her transport ! !

### Afterwards

Just as everyone needs to be involved in the preparation, they also need to be responsible for their share of the clearing away — if included in the planning then everyone will know what is expected — a little encouragement from leaders and it will be done quickly and efficiently.



### Preparing to be a Hostess

The unit meeting gives many opportunities to prepare the girls for the role of hostess. Courtesy and consideration for others should be encouraged at all times — developing good relationships is one of our 8 Points of training — include homecraft skills, creative ability and practically every other point and your guide is well on her way.

The following activities can be adapted easily for Rangers, Guides and Brownies — do try them and devise opportunities for your girls to practise the art of good hostessing.

The Hostess Badge gives a basis on which to build. A Hostess Badge Teaching Kit is a useful aid.

Using the kit a guide can prepare herself for the badge and it ensures a similar standard for the unit.

## VISITING STRANGE PLACES or MAKING NEW FRIENDS

### Ideas for Your Kit

1. Book, "Hints on Guide Badges—Hostess".
2. Sample letters, as required, important points underlined.
3. Printed formal invitations (unfamiliar to many guides).
4. Australian Post Office card or similar, showing correct way to address an envelope.
5. A set of cards with pictures and matching captions relating to points made in book as above (see suggested list).
6. If the Hostess Badge assessment is usually done at the meeting hall, a "check list" appropriate to your own particular conditions is useful.
7. "A Guide for a Good Guest". A Guide Law activity.



### Suggested List for Captions

If an overnight guest, a place for her clothes, e.g., Picture — cupboard or chest of drawers.

Nicest china, matching cup and saucer, e.g., Picture — appropriate china.

An extra blanket for the bed.

A few suitable books in the guest room.

Set the table attractively, cloth wrinkle free.

Clean linen on the guest's bed.

Cutlery placed correctly, check salt and pepper.

When saying "Goodbye", escort guest to car or gate.

Introduce your guest to others.

Show your guest the whereabouts of toilet and wash basin.

A clean towel and soap for your guest's use.

Flowers say welcome in the guest room.

Clean and dust the guest room.

Prepare something nice for refreshment.

Post that letter of thanks promptly.

Space your letter carefully on the paper.

A formal invitation.

A comfortable chair for your guest to be seated.

Welcome your guest with a smile.

Watch your pets, your guest may be allergic to animals.

Allow your guest privacy in bathroom and bedroom. Do not embarrass her with a family squabble.

### How to Use the Cards

As a self-assessment activity, a girl matches the cards, the Guider can check and discuss points raised.

With a small group the cards are shuffled and five cards dealt to each. Any pairs are placed face up and checked. The spare cards are in the centre, and each girl in turn picks up from the stack, makes a pair if possible, puts down an unwanted card. The winner is the player with the most correct pairs. (Guiders can check and correct.)

### A Check List for Entertaining a Guest at the Guide Hall

This helps the guide with limited experience to be well prepared for her share of entertaining a guest at the hall.

Make a list to suit your meeting place.

Send out invitation in good time to allow for a reply.

Allow plenty of time for preparation, have everything ready in the kitchen before guests arrive.

Check food, savoury and sweet, coffee, tea, sugar, milk, cordial for young guests, china, table cloth, ash tray, flowers.

Arrange furniture, set table. Cover food until needed.

Meet guest at door and SMILE.

Introduce yourself and others as necessary.

For entertainment show guest around the hall, show log book, handcraft, etc., explain what guides are doing.

Excuse yourself if you have Patrol duties to attend to, also when you need to serve the refreshments.

When your guest is leaving, thank her for coming, see her to the gate or car.

Clear table, wash up, dispose of rubbish and leave all tidy.

# GUIDE FOR A GOOD GUEST

Being the perfect guest is also an art worthy of cultivation and the following activity will prepare for the role of visitor.

Each of the following hints is related to a guide law.

Do not look in drawers or cupboards not provided for your use. (Trusted)

Make your own bed each day. (Helpful)

Even if you do not like animals, do not mishandle the family pet. (Kind).

Do not read letters or private papers you see about. (Trusted)

After your visit write promptly to thank your hostess for having you. (Polite)

Help with household jobs. (Helpful)

Do your best to get on with all members of the family. (Friendly)

Do not spend too long under the shower. (Considerate)

Leave the bathroom basin clean after use. (Considerate, takes care)

Thank your hostess for a nice meal. (Polite)

Accept the family rules, even if different from your own. (Obedient)

Ask permission before using the telephone. (Police, considerate.)

Do not tease young ones in the family and cause bad behaviour. (Self control)

Do not embarrass your hostess by using words which are not acceptable to her. (Self control)

If out with your friend, return on time. (Obedient)

Untidy type? Do not leave your things about. (Self control)

Remember your table manners. (Polite)

Keep dirty shoes off the bedspread. (Takes care)

Do not use appliances, stereogram, etc., unless you have been shown how they operate. (Takes care)

Which law, well kept, ensures an invitation to come again? (Polite, considerate)

Take care not to quarrel with your friend. (Self control)

If unwell, try to cope without becoming too miserable. (Courage)

Keep volume of transistor at reasonable level. (Considerate)

## How to Use

Each hint is written on a separate card, and the key words of the laws are also written on separate cards.

For one set of hints (24 cards), three sets of key words of the law will be needed. (30 cards). This is to keep the game moving quickly.

## The Action

The law cards are placed separately about the hall, on benches, etc.

The Guider then hands each girl a hint card for which a law card is to be found.

Each pair is shown to the Guider, and, if acceptable, a token is given, the Guider keeps the hint card to hand out again, the girl returns law card to bench and lines up for another hint card.

If hint and law cards are not suitably matched, the girl can look for a more appropriate card. Winner is guide or patrol with most tokens.

A large unit may need a longer list of hints.

Some discussion could take place if needed.



# LOCAL



# ASSOCIATION SECTION

## Thought for the Month

Kindness in words creates confidence,  
Kindness in thinking creates profoundness,  
Kindness in giving creates Love.

## Confidence

Success, achievement — for individuals or for a nation — depends on confidence. The confident person has a bold optimistic approach. He is aware of difficulties and risks, but believes they are not insuperable. In this he differs from the over-confident person who ignores danger and does foolhardy things which he lives to regret.

The opposite of confidence is timidity and fear, which leads to inaction. One becomes so obsessed with the difficulties, with the consequences of failure, that one is frightened to move.

Confidence is infectious. The person with a bright, hopeful attitude communicates his optimism to others, and so confidence spreads.

But timidity and fear are also catching — dangerously so. Whole nations can be infected. Remember what Franklin Roosevelt told the American people in the Great Depression: "We have nothing to fear, but fear itself".

Lack of confidence in individuals is caused by dwelling too much on one's shortcomings. None of us is perfect; we all have defects. But we should cultivate the habit of concentrating on our strengths, on our good qualities.

One way to develop confidence is always to think positively, not negatively; why we should do something, not why we should not do it.

As a nation, Australia seems to be in a kind of twilight zone at the moment. Certainly we are not despairing; but equally we are not brimming over with confidence in the future, and with the zest that arises from confidence in the future. As a people we may be thinking too much about problems and

difficulties, not sufficiently about opportunities.

Few nations have greater prospects than Australia, greater underlying strengths. Let us not forget that we are amongst the most fortunate people on earth!

(Courtesy, Institute of Public Affairs)  
—from "Adventuring", South Australia.

## Trash and Treasure

It was an exciting time when Cavendish Girl Guide District re-commenced during last year after a lapse of ten years. The Local Association re-formed at the same time and already is a very strong and interested group.

Soon after the Local Association started to function, a Boys' Committee for the Cavendish Scouts and Cubs formed and they invited Local Association members and the District Commissioner to a meeting to discuss ideas for fund-raising on a joint basis.

The idea of a "Trash and Treasure" was born, and included an auction, barbecue, merry-go-round and stalls of bric-a-brac, secondhand clothing and shoes, old books, flowers, plants, drinks and cakes.

A great deal of planning went into the day by both groups, with wonderful support given by everyone interested in Guiding and Scouting. It was decided to share equally expenses and proceeds between the two groups and at the end of the day, after all expenses were paid, each group received the wonderful amount of \$674.00, a most rewarding effort.

Cavendish Local Association and Boys' Committee must be congratulated on this great joint effort, as it shows what interested and enthusiastic committee members and supporters can accomplish with carefully planned team work in a comparatively small country district.

\* \* \*

Please send contributions for this section to Mrs D. O. Oldfield, 4 Embling Road, Malvern, 3144.

## SQUARE SNEAKER SIZZLE SURPRISE

Outside Girl Guide Headquarters 230 finely-dressed ladies, gentry, swaggies and even convicts assembled (in traditional "Colonial" dress), for the Rangers' Surprise Christmas Break-up.

Having complied with the requirements of Central Committee to bring with us a 20 cent Christmas present, a safety pin, and a pair of sandshoes, all wrapped in a square scarf and tied to a 3-foot pole, we moved off, swags over our shoulders, much to the amusement of Friday night city shoppers! Down Flinders Street, Swanston Street and Batman Avenue we swaggered — until we spotted our mode of transport for the evening (furniture vans), and climbed aboard. We headed eastward out of the city, eventually along Burwood Highway.

At this stage, however, disaster struck! We had to undo all those fine swags, so carefully tied onto our sticks, and blindfold each other with the scarves, and remain thus until we reached our destination. Not having a compass, a sense of direction or a pair of eyes, it was almost impossible to work out where we were headed.

At last we arrived at Blackburn South Guide and Scout Halls. Central Committee had everything well under way. The barbecues were in full swing, as was the drink service. Half the group then toiled 20 yards up the hill to the Scout Hall, where we were kept moving with lively barn dances and various kinds of folk dances for half the evening. Music and instruction were supplied by the Victorian Folk Bush Band, whose aim is to encourage people to know more about early Australia in song and dance.

A break for our supper of bread and barbecued sausages and a soft drink, and then . . . SANTA CLAUS ARRIVED! . . . with his white flowing beard, jolly laugh and lots of presents for good, deserving Rangers.

It was then time to swap halls and this time, in the Guide Hall, our group found the Victorian Folk Bush Band teaching Australian Folk songs. We sang old and new songs for the rest of the night, while the other group enjoyed the dancing.

Then back to Headquarters and home; we had had an enjoyable evening with our sticks, scarf, sneakers . . . and our present from Santa.

Thanks to Central Committee for such a wonderfully organised SQUARE SNEAKER SIZZLE SURPRISE. It sure was . . . a surprise, that is!

—ALISON PYE,  
Stradbroke Ranger Unit.



### TAPSWEDYING

Rangers are reminded of the light-weight camp at Tapestry — Tapswedying — on 23rd to 25th April. Activities will include spinning, weaving, dyeing, rug making, shawl making and tapestry.

\* \* \*

Something good can be said about everyone. We only have to say it. Without encouragement any one of us can lose confidence. Thus we all have a double necessity — to be commended and to commend.

## COUNTRY DANCING AT GUIDE-SCOUT DISPLAY — YOUTH ACTION '77

Early this year fourteen Cressy Guides and Brownies went to the 6th Floor of Myers Melbourne to dance. We did three Country Dances: the Seven Steps, Bingo and the Circassian Circle. Seven Steps was easy, Bingo was a bit complicated and the Circassian Circle was complicated as well as tiring. We danced the three dances on a wide, low platform at 11.30 a.m., 12.30 and 1.30 p.m.

One of the guides hurt her foot, so Jacaranda, our leader, took her place. We all had a lovely day and enjoyed our trip to and from Melbourne. We left early by car for Geelong from Cressy, caught a train to Spencer Street. We walked up from the station to Myers. It was the first trip on a train for some of us.

The displays were very interesting. A guider showed us how to make flowers and items for a wall hanging. We were able to take the flowers home to show those in our company who could not come.

A lot of work had been put into the day's activities and it was disappointing to see so few people passing through the display area.

—CHRISTINE ROUSTON,  
1st Cressy Guide Company.

## RANGERS' MONSTER FETE

10.00 a.m. — 4 p.m.

26th March, 1977.

Dendy Park,

Crimmins Street, Brighton.

Stalls include: Cakes, Materials, Plants, Sweets, Hot Dogs, White Elephant, Fortune Telling, Coconut Shy, Stocks, Drinks, Devonshire Teas, Books, Novelties, Handcrafts, Knitwear, etc.



## BUCKINGHAM PALACE

Dear Miss Barr,

The Queen has commanded me to ask you to convey to all The Queen's Guides of Victoria her sincere thanks for their kind and loyal message of greetings sent on the occasion of the presentation of The Queen's Guide Awards.

Her Majesty greatly appreciated their good wishes.

Your sincerely,

—PHILIP THOM.

\* \* \*

At the recent presentation ceremony when Lisa Mattingly and Anne Rice received their Queen's Guide badges, guests included six girls who had also gained the badge as members of the same unit, 1st Herne Hill Company.

Parents and families of all these Queen's Guides are actively involved in Guiding and Scouting. Three of the girls are sisters, Marlene, Heather (now Rangers) and Carmel Willmot.

Cheryl Burge is also a Ranger and is presently helping as a leader in a unit. Jane Talsma is an assistant Guider and Tracy Warren received her assistant Brownie Guider warrant during the evening.

DOROTHY BASHAM,  
District Commissioner.

## FOR SALE

- Ranger uniform (dress and jacket), outgrown. Please, I need \$15.00 towards a new one. Robin Grover, c/o Police Station, Cressy. Telephone (052) 38 8221.
- Commissioner's near new jacket, skirt, size 18, shirt, hat. \$25.  
Mrs G. Chatham, 28 Monchmore Avenue, St. Leonards, 3223. Telephone 57 1943.

## JOINT ACTIVITIES IN ISRAEL

The Scout Movement in Israel is basically co-educational because most educational institutions starting from the kindergarten, through primary school, to secondary school are in fact co-educational. There are some exceptions to co-educational scouting that include for instance the Druze community, where girls have not yet been allowed to join the movement. But there are signs that this too is changing.

Together with our general concept of co-education, we have always been mindful of the different needs of growing boys and girls, and to this end have maintained single-sex patrols for the younger scouts. The teen-age leader of a 10-year-old boys' patrol, for instance (and our patrols are organised horizontally, not vertically as regards age) will always be a boy, while the girls' patrol will always have a girl patrol leader. At the bi-weekly meetings, roll-call takes place with all patrols participating standing in a horse-shoe, since they all belong to the same "tribe" (troop); but for games and badge-work and discussions, activities take place in the single-sex patrol.

When the young boy or girl scout approaches the teen-age part of the movement, the change to co-educational patrols starts. The change is gradual since the teen-ager, if he or she is a patrol leader (and most are) still leads a single-sex patrol.

We believe that by organising supervised mixed patrol activities we obviate the need for the young teen-ager to seek his or her social life elsewhere. The mixed patrol responds to the needs of the girl's social life, while creating other challenges of developing in the girl her full leadership potential in a mixed society.

Scouting in Israel becomes a significant part of the young person's life, and he or she devotes many hours to scouting. It trains young people towards co-operation in a group, towards the taking on of responsibilities at an early age, and towards life in the community, wherever they may be called upon to serve.

(From Asia-Pacific Newsletter.)

## SMILES AND HAPPINESS EVERYWHERE

Near the end of last year Goulburn Region held a Rally, the theme being "Fitness is Fun".

Special guests, Mrs Grimwade and Miss Barr, were welcomed during the opening ceremony.

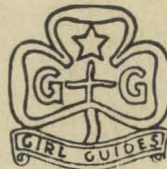
The first activity I took part in was **Folk Dancing**. It was great fun and we enjoyed learning the **Campfire Songs** Miss Barr taught us.

When we were doing **Archery** I never even got near the target, but I did enjoy the **Flying Fox**. So did Mrs Grimwade.

My **Dried Flower Arrangement** did not turn out very well, but I had great fun crawling under canvas in the **Obstacle Course**.

All through the day I saw smiles and happiness. It was a great day.

V. COBBAN-SHARD,  
2nd South Shepparton Guide Company.



## GUIDING IS CARING

In Bendigo there is a former Brownie Leader who resigned because of ill health and is now unable to work.

Although she had not been a Guide as a child, her time with the Brownies opened a wider world and she was sad to have to leave her work with the girls. However, she has now become an assistant Lone Guide leader, and so still belongs.

We tried unsuccessfully to find a second-hand typewriter to help her with her work with the Lones.

The girls in our region were asked if they would like to help and, due to their wonderful response and with help from Local Associations, sufficient money was raised to buy a new typewriter for Bee. There was even enough money left over for typing paper, "Matilda" subscription and similar expenses.

—JOYCE ROWE,  
District Commissioner,  
Bendigo Central District.

# KNOW YOUR REGIONS

## Acheron (The Bushland) Region

ACHERON is probably one of the most visited regions in the State. Every weekend and holiday tourists stream along Maroon-dah Highway to enjoy attractions of the Dandenong's foothills, pleasant countryside of Lilydale and Yarra Junction areas, or mountains near Healesville and Marysville. Guiding visitors also find their way there frequently, for the gem in the crown of our region is Britannia Park.

Acheron Region, taking its name from the Acheron River which flows through the Dividing Range beyond Warburton, extends from outer suburban districts of Croydon North to the forests of Marysville.

Travelling along the highway, the first of the three divisions we come to is **Lilydale West**.

Wonga Park to the north is a rural residential district where homes on large blocks have a link with early settlers in the names of roads such as "Homestead", "Brushy Park", etc. Croydon North, although straddling the wide, busy highway, still has an open feeling about it. Many of the industrial buildings have been designed to suit their surroundings, and wide lawns, gardens and trees disguise their functional role.

Kilsyth, although now residential and commercial, still has wide tree-lined streets, whilst Montrose, at the foot of the Dandenongs, still has much of the mountain village atmosphere with its small township and roads that lead to various scenic drives. There is an awareness here of our natural bush heritage, and within easy reach are native gardens and nurseries, the William Rickett's Sanctuary, as well as the art galleries and craft centres of the Dandenongs.

Mooroolbark is an aboriginal name meaning red soil and, like most of this region, was originally a farming district, but there is little sign of it now in the midst of modern houses, shopping complexes, educational and recreational facilities.

**Lilydale Division** starts at Lilydale itself — and this is "Melba country". Here she lived as Helen Mitchell, and it was here she came as Dame Nellie Melba to sing in small halls for local farmers and their families. Here is the gracious Coombe Cottage to which she returned after world tours and, in a park bearing her name, the Historical Society has set up a permanent display to her memory.

In this park also is an interesting link with Scouting and Guiding in a tree which bears a plaque honoring Lord Baden-Powell for his heroic defence of Mafeking.



Mt. Evelyn, once a popular weekend holiday spot, has a large population, but this is not apparent as houses here are set among tree-lined roads which lead to natural bushland. Seville district was settled in the mid-1800's by families from the Channel Islands, many of them having French names which are still heard in their descendants. The place was first known as Redlands, from the colour of the soil, but later became Seville, so named after a little girl, Seville Smith, whose family had Spanish connections. In addition to grazing properties, there are orchards and berry farms, although many are being subdivided into housing blocks.

Yarra Glen district dates from 1861, when it was known as Yarra Flats. In early days the train crossed the Yarra River by a wooden bridge nearly 1½ miles long, thought to be the longest bridge in Australia at the time. Early settlers were farmers producing cattle, sheep, wheat and grapes. There were

also detached parties of miners in search of gold. In the Yarra Glen School is a plaque to the memory of Joseph Furphy (author of "Such is Life") who was born in a wattle and daub shack on the site of the school.

Today dairying and grazing are still carried on, but slowly giving way to subdivision and an increase in horses as the Hunt Club, Pony Club and Racing Club flourish.

Yarra Glen Guides and Brownies are fortunate in having a large hall which has the historic distinction of having once been horse stables for police stationed at Lilydale.

**Yarra Yarra Division** includes Healesville, which is surrounded by the mountain peaks of Riddell, St. Leonard, Toole-be-wong, and Blue Mountain, and the storage dams of Coranderrk, Donnelly's, Graceburn, Fernshaw and the Watt's River. Formal and native gardens of these picnic spots and parklands of Maroondah Lake vie with the Sir Colin MacKenzie Sanctuary in attracting visitors.

Marysville's early days were bound up with the discovery of gold at Wood's Point when, in 1863, shanties, stores and hotels were built to accommodate the travellers. When gold gave out in 1914, the farmers came, then the saw-millers and, by the 'twenties, the tourists were coming to the new guest houses which established the tradition of hospitality for which Marysville is now famous. Here is the beauty of the forest, waters and bushland which we all associate with our country.

At last in this division we come to Yarra Junction, geographically far across the mountains from Healesville and Marysville on the Warburton highway. Here also the get-rich-quick dreams of gold gave way to the sure harvest of the forest and the settled life of the farmer. Guiding friends who have taken this road through farms and orchards know the tranquil beauty of the countryside, and those who have visited Britannia Park will know of the peace and charm of our bushland.

When we consider that our continent has only twenty-five per cent forest land, we count ourselves fortunate that we have so much natural beauty and grandeur in our region. We are fortunate in the abundance of trees and flowers, birds and animals, green-ness and space, and all of us, in each district, invite you to visit and share it with us.

—IVY V. ARNEY.

## ROCK CAMP

"Rock Groups" — Hush, Supernaut and Ac-Dc (Allansford and Timboon guides) were in camp at Sherbrook River, near Port Campbell, under the leadership of "Sherbet", who was ably assisted by "Darryl", "Garth", "Harvey" and "Allan". While visiting Loch Ard Gorge, we met eight small boys from Sydney who were cycling with their Dads from Geelong to Adelaide.

A trip to see the Muttonbirds was rewarded with a fantastic display from these unusual birds, which drift in at dusk to their home on the island.

The rope bridge was a challenge taken up by several brave new campers, and the moonlight hike saw us thoroughly "bushed" in the forest on a beautiful warm, clear night.

Everyone was a nervous wreck when a blue-tongue lizard got under Sharon's bed-roll. "Allan" explained how it was important to stay calm in such situations. Later, two of the very youngest guides came to a leader and whispered in controlled tones that they had seen a black snake. Their calm and sensible action impressed everyone and extra care was taken when walking about.

Many new songs were learned around campfire and, over the four days, four challenges which were completed by each guide were acknowledged by the award of a coloured bead. These beads formed a special necklace as a memento of the camp.

On the last day the camp was left standing so that parents could see how we lived in camp, as many lived too far away to attend a visitors' day.

Even though many of the guides were new campers — just learning camping procedures — they managed to strike camp quickly in expert style, watched by fascinated parents and brothers and sisters.

—"SHERBET".



# DOWN IN THE ARCHIVES

One of the fascinating things about looking after the Archives is the way in which bits and pieces of information keep coming up, throwing fresh light on what is already known.

Last year I mentioned the 'identity label' given to scouts attending the rally to meet the Founder when he first visited Melbourne in 1912. Apparently this was done because there were at that time two Associations of Scouts here, with different policies. One was run on lines that were definitely militaristic, with great emphasis on drill and strict discipline. There had been many criticisms of this and B.P. was determined that this tendency must be checked — his Scout movement was **not** for training young boys to be soldiers. Although he was quite willing for any boy to attend the rally as a spectator, only those belonging to the Imperial Boy Scouts, Victorian Branch, were to be allowed to take part in the program. Hence the need for an identification label.

The weekly British Guide paper, 'The Guide', had a picture on the front cover of the issue for 18th August, 1961, with the caption — "Australian Guides ready for a rally in the early days of Guiding". It goes on to say that the picture was taken in Melbourne, probably in 1922, and this puzzled me, for one of the Guiders shown in the picture — Miss F. V. Barfus — had some sort of badge on her turned-up hat. Now, the Victorian State badge was not in use until after 1927, so I asked Miss Gwen Swinburne, who is also in the picture, what badge it might have been, or was the date of 1922 not correct.

After much discussion, it was decided that it was a State Badge, and the date could not have been 1922 because at that time Guide Captains and Lieutenants wore dark-blue shirts, and Miss Swinburne's shirt is definitely white, so the date of the event must have been at least five years later when she had been promoted to District Captain with a white shirt.

In pictures taken up to the beginning of the nineteen-fifties, Commissioners can often be distinguished by the cords they wore on the left shoulder, and I was amused at some

correspondence in the Girl Guide Gazette of 1922 regarding these cords — "Surely some less conspicuous and gaudy mark of rank might be devised which, combined with the Commissioner's natural dignity of carriage, would set her apart from the lesser lights".!

—MARY LAMBE,  
State Archivist.



## NIGERIA — VOCATIONAL TRAINING CENTRE

Are you looking for an overseas service project?

We were delighted to hear that the Vocational Training Centre for Handicapped Girls in Lagos has now been built, and the girls have already started holding their classes. Eventually, up to fifty girls will live there and receive training in secretarial subjects, such as typing and shorthand, and will also learn traditional skills.

This centre in Lagos, Nigeria, is part of U.N.E.S.C.O. Gift Coupon Project 543. You can contribute towards purchasing equipment for this centre by sending U.N.E.S.C.O. Gift Coupons. Money for Gift Coupons may be forwarded to Overseas Service Co-ordinator, Mrs. G. Farrow, 3 Merrion Grove, Kew, 3101, who will purchase the coupons and send them to the World Bureau.

This is a W.A.G.G.G.S. Sponsored Project and one in which Guides are actively associated.

The best publicity we can have is through our own Guide movement, so, **SPREAD THE WORD!** A call to our State Secretary, Miss Barr, will set the lines of communication in action.

# The Dandelion Song

Words by Robyn Bradford  
Music by Dawn Marshall

Fairly fast and bright

Verse 1: As Dan-de-lions be-neath our feet In  
morn-ing fresh-ness sun-light greet. We feel their dewy  
wet-ness stain Our shoes with energy again.

Chorus:  
Elements making our bodies grow strong;  
Blessing Australian days sunny and long;  
Filling our hearts with the vibrance of song;  
Filling our hearts with the vibrance of song.

*Last time*

Those of you who remember the Grand Finale of the National Festival of Song at the Dallas Brooks Hall in August 1975 will recall this delightful song which was written and presented by a group of Rangers from South Australia. — 2nd, 3rd and 4th verses on opposite page.

# TRAINING CALENDAR

**Commissioners and Unit Leaders** with the necessary experience are welcome to apply for **ANY** training. Applications should be sent **prior to the closing date and be accompanied by the training fee and a stamped self-addressed envelope.** Early application for all trainings is recommended. Training fee is \$3.00 unless otherwise stated.

## Stage 1 Training

**Baw Baw Region:** Weekends 2nd-3rd April and 30th April-1st May, times 10.00 a.m. to 4.00 p.m. Further information available from Mrs K. Marshall, 29 Hearn Street, Drouin, 3818

**Geelong:** Tuesday, 21st, 28th June, 5th, 12th, 19th July, times 10.00 a.m. to 3.00 p.m. Applications to Mrs A. Bell, 1 Layton Crescent, Newtown, 3220, by **1st June.**

**Maroondah Region:** Weekends 16th-17th April and 30th April-1st May, times 10.00 a.m. to 4.00 p.m. Further information available from Mrs C. Howarth, Unit 11, 3 Turnbull Court, Ringwood, 3134 — 870 8246.

**Wodonga:** Weekends 30th April-1st May and 4th-5th June, times 10.00 a.m. to 4.00 p.m. Applications to Mrs D. Hamilton, "Hamilton Park", South Wangaratta, 3677, by **12th April.**

## Stage 2 Training for Warranted Leaders

**Headquarters:** Tuesday, 29th March, 5th, 19th, 26th April, 3rd May, time 10.00 a.m. to 3.00 p.m. Applications to the Training Department, Guide Headquarters, by **17th March.**

**Dandenong Region:** Weekends 18th-19th June and 16th-17th July. Further information available from Mrs H. Lardner, 51 Bundeena Avenue, Noble Park, 3174.

**Goulburn Region:** Tuesday, 24th, 31st May, 7th 14th, 21st June, times 10.00 a.m. to 3.00 p.m. Further information available from Mrs M. Murphy, 73 Balaclava Road, Shepparton, 3630.

## Stage 3 Training for Warranted Leaders

**Box Hill:** Wednesday, 25th May, 1st, 8th, 15th, 22nd June, times 10.00 a.m. to 3.00 p.m. Applications to Training Department, Guide Headquarters, by **4th May.**

## Pack Holiday Training

**Pyramid Hill:** Weekend 30th April-1st May, time 9.30 a.m. to 9.00 p.m. Saturday and 9.30 a.m. to 4.00 p.m. Sunday. Applications and \$4.50 fee to Mrs B. Whelan, 8 Hope Street, Kangaroo Flat, 3555, by **14th April.**

## Changeover Training for Warranted Guiders who are to move over to the Ranger Section

**Euroa:** Weekend 2nd-3rd April, time 10.00 a.m. to 4.00 p.m. Note: Would Guiders in Barea, Goulburn, Hume and North Central Regions requiring Ranger training make a special effort to attend this course. Applications and \$1.50 fee to the Training Department, Guide Headquarters, by **18th March.**

**Headquarters:** Weekend 30th April-1st May, time 10.00 a.m. to 4.00 p.m. Applications to the Training Department, Guide Headquarters, by **14th April.**

**Maryvale:** Weekend 4th-5th June, time 9.45 a.m. to 4.00 p.m. Note: Would Guiders in Baw Baw, Gippsland and Woorayl Regions requiring Ranger training make a special effort to attend this course. Applications to Mrs. K. Marshall, 29 Hearn Street, Drouin, 3818, by **16th May.**



---

## THE DANDELION SONG (continued)

2. Our homes upon our backs once more  
We feel the world's an open door.  
For youth is ours to use and spend  
While we have earth and health and friend.

3. Sunset veils the realm in view  
With all its wide and rosy hue.  
While we in such a wondrous sphere  
Remember not a sight more dear.
4. May we forever roam this world  
where all these beauties are unfurled,  
And feel that here we are at one  
With all that shares a generous sun.



## PROGRAM WORKSHOP

Are you looking for new program ideas and want to share yours with others? Then come to **OUR CABANA** from 21st to 30th September, 1977, for our Program Workshop.

Together we will share program skills and techniques and exchange ideas on topics of common interest. Participants and staff will plan this session to meet your specific needs as closely as possible. There will be time to relax in the warm Mexican sunshine; time to appreciate and participate in Cabana life; and an opportunity to discover Mexico.

If you are at least 18 years of age, a registered member of your Association and have an **ACTIVE** interest in Girl Guide/Girl Scout programming at any level, then be sure to write **NOW** for further information by registered airmail to: Miss Maria Laura Avina, Our Cabana, Apartado Postal 406, Cuernavaca, Morelos, MEXICO.

This session will be limited to 30 participants. A maximum of 10 applicants from an Association will be accepted on a first come first served basis.

The cost of this Workshop will be U.S.\$12.00 daily plus U.S.\$25.00 for program expenses (trips taken during the session and arts and crafts).

**AN INTERNATIONAL EXPERIENCE AWAITS YOU AT OUR CABANA, ONE OF YOUR FOUR WORLD CENTRES . . .**

## LINGBOGOL CAMP BOOKINGS

Due to damage caused by recent bushfires Lingbogol Campsite at Creswick will be closed until 1st June, 1977.

# THE GUIDE SHOP

## Getting Ready to Camp

Camp Fund Record Card	4c
(This is for weekly or monthly savings towards camp fees.)	
Camp Hats (Poplin) — sizes 21" only	\$3.00
Camp Hats (Towelling) — sizes Medium, Large	\$2.55
Blue T. Shirts — sizes 12, 14	\$3.75
Blue T. Shirts — sizes 16, 18	\$4.35
Blue Skivvies — sizes 10, 12, 14	\$5.25
Blue Skivvies — sizes Small, Medium, Large	\$6.40
Guide Blue Shorts (Stretch Towelling) — sizes 10, 12, 14, 16	\$4.50
Jeans — sizes 26, 28, 30	\$9.95
Guide Blue Pullovers — all sizes	\$13.75
Guide Blue Cardigans — all sizes	\$14.85
Campfire Shirts — all sizes	\$6.30
Groundsheets 7' x 3'	\$6.86
Hike Groundsheet	75c
Sleeping Bags — Superior Polyester	\$24.10
Sleeping Bags — Featherdown	\$48.30
Sleeping Bag Inner Sheet	\$3.45
Rucksacks — 2 Pocket	\$18.55
Rucksacks — 3 Pocket	\$18.20
"A" Frame Rucksack — 3 Pocket	\$31.05
"H" Frame Rucksack (Budget Venturer)	\$43.15
"H" Frame Rucksack (Venturer)	\$67.30
Pocket First Aid Kit	\$3.90
Unit First Aid Kit	\$12.00
Enamel Plate, Bowl and Mug—Set of 3	\$2.00
Cutlery Sets	\$1.05
Camp Record Card	10c
(Record for Camp Tenderfoot, Camper Badge and Patrol Camp Permit)	
Are You a Camper? Hints on the Camper Badge	30c
Help Yourself to Hike Cooking	85c
Outdoor Ideas	30c
Knight Book of Easter Fun	\$1.40
Safety in Adventure Activities	\$1.25
"Camp — The Great Opportunity"	25c
Let's Go Camping	90c
Wide Games and Night Games	25c
Camp Cooking	\$1.10
The Quartermaster in Camp	45c
Off to Camp — The Patrol's Own Camp Book	85c
Camps and Holidays	\$1.75
Outdoor Cookbook	45c
Bushwalking and Camping	\$1.00

**CONGRATULATIONS** to the recipients of the following:

### **Emu Award**

Mrs J. Cardie, Rosebud.

### **Certificate of Merit**

Miss A. H. Smith, Wangaratta.

### **Guider Long Service**

(20 years): Mrs B. Herbert, Echuca

(10 years): Mrs J. McDonald, Syndal; Mrs D. Gilmour, Portland; Mrs J. Twist, Mt. Waverley; Mrs J. Harle, Mt. Waverley; Mrs J. Holford, Mt. Beauty; Mrs M. Cleave, Echuca; Mrs R. Hart-skeerl, Frankston; Mrs J. Clarke, Lilydale.

### **Combined Long Service**

(20 years): Mrs K. Hillman, Ballarat.

(10 years): Mrs E. R. Craig, Frankston; Mrs N. Keele, Reservoir.

### **Local Association Long Service**

(10 years): Mrs J. Curtis, Avoca; Mrs W. Greenwood, Avoca; Mrs. D. Evans, Belmont.

\* \* \*

### **Thanks Badge**

Mr M. Richardson, Knoxfield.

## **APPOINTMENTS AND WARRANTS**

A warm welcome is extended to the following:

### **District Commissioners**

Mrs J. I. Frew, Rosebud; Mrs R. B. Wallace, Puckapunyal; Mrs. J. W. Robinson, Merrigum; Mrs T. Thompson, Barwon Heads/Ocean Grove.

### **Ranger Guiders**

Mrs M. H. Brown, Terang Rangers; Mrs W. G. Embury, Wodonga Ranger Guides; Mrs J. Caruso, Boort Ranger Guides; Mrs A. Lovie, Box Hill North Division Rangers (Unit 2); Mrs A. Tomada, Ferny Creek Ranger Guides.

### **Assistant Ranger Guider**

Mrs D. Steward, Pascoe Vale South Rangers.

### **Guide Guiders**

Mrs S. Bransby, 3rd West Doncaster; Mrs K. A. Gray, 1st Springvale South; Mrs D. Blasi, 1st Hallam; Mrs D. P. Keating, 1st Tullamarine; Mrs G. B. Smith, 2nd Donvale; Mrs K. Chandler, 3rd Doncaster; Mrs D. R. Hose, 1st Sea Lake; Mrs F. A. Best, 3rd Croydon; Mrs G. A. Woolley, 2nd Seaford; Mrs N. J. Turney, 1st Research; Mrs J. Megee, North Metropolitan Extension Guides; Mrs R. J. Harborow, 1st Ferny Creek; Mrs T. R. Booth, 3rd Victorian Lone Guides; Mrs N. Flegg, 2nd Kerrimuir; Mrs D. T. Anderson, 1st Kerrimuir; Mrs R. Drake, 1st Allansford; Miss P. J. Rose, 1st Edithvale.

### **Assistant Guide Guiders**

Mrs M. J. Kaser, 1st Churchill; Miss D. Barber, 1st Rushworth; Mrs N. C. Henley, 1st Traralgon; Mrs J. Pakeman, 1st Doveton; Mrs R. J. Brooks, 1st Ocean Grove; Miss J. Crossley, 1st Bentleigh East; Miss S. B. McAdam, 2nd Balwyn; Mrs M. Price, 2nd Beaumaris; Mrs G. S. Hopkins, 2nd Rye; Mrs K. M. Adam, 1st Donvale; Miss B. R. Smith, 1st Research; Miss N. A. Barr, 1st Rainbow; Mrs J. A. Aitken, 1st Murrayville; Mrs P. Rekdale, 1st Eltham; Mrs A. L. Watt, 1st Mont Albert; Mrs C. Ellis, 1st Scoresby; Miss D. M. Briggs, 1st Moe; Mrs I. Bassett, 1st Kvabram; Mrs D. Mashiter, 2nd Kerrimuir; Miss E. Strasser, 2nd Balwyn; Mrs J. Parker, 2nd Sunshine West.

### **Brownie Guiders**

Mrs V. Nancarrow, 1st Cowes; Mrs D. Samuel, 4th Doncaster West; Mrs J. M. Lewellin, 1st Yarra Junction; Mrs T. M. Maxwell, 2nd Dandenong; Mrs E. M. Speirs, 4th Dandenong North; Mrs P. J. Winyard, 1st Laverton; Mrs H. Carter, 1st Albert Park; Mrs J. Haggart, 2nd Beaumaris; Mrs C. Talbot, 2nd Niddrie; Mrs W. R. Simpson, 1st Hazelwood; Miss V. Thewlis, 2nd Pakenham; Mrs D. F. Payne, 1st Burnley; Mrs M. J. Baxter, 1st Donvale; Mrs J. Kemfert, 2nd Dimboola; Mrs B. P. Willis, 2nd East Keilor; Mrs F. James, 1st Murrayville; Mrs A. N. Smith, 1st Sea Lake; Mrs J. M. Rae, 3rd Horsham; Mrs B. Smethurst, 3rd Scoresby; Mrs L. Bahn, 2nd Traralgon; Mrs K. J. Hastie, 2nd Churchill; Mrs G. Vincent, 3rd Traralgon; Miss F. Lea-Whyte, 1st Mooroopna; Mrs B. A. Heywood, 1st Rosedale; Mrs M. Pearce, 4th Horsham; Mrs S. Kohlman, 1st Woori Yallock; Mrs G. G. Ralph, 1st Trentham Cliffs; Mrs J. A. Jones, 2nd Lara; Miss A. McGovern, 2nd Kerrimuir; Mrs M. McKinnell, 1st Parkmore.

### **Assistant Brownie Guiders**

Mrs V. Millman, 5th Beaumaris; Mrs L. A. Parsons, 1st Seaholme; Mrs L. Baum, 3rd Wattle Park; Mrs N. King, 1st Moorabbin South; Miss J. O'Connor, 2nd Reservoir West; Mrs. G. Edwards, 2nd Mooroopna; Miss R. Blandford, 2nd Moe; Mrs T. Pepperell, 1st Bentleigh East; Mrs P. Barden, 1st Highvale; Mrs T. McKenzie, 3rd Brandon Park; Mrs H. Neet, 4th South Croydon; Mrs R. E. Mildenhall, 1st Hazelwood; Miss J. Griffiths, 2nd Churchill; Mrs G. Gramlick, 1st Woori Yallock.

## REGISTRATIONS

Rochester Ranger Unit; Morwell Ranger Guide Unit; Northcote East Ranger Guide Unit; Cranbourne Ranger Guide Unit; 1st Buninyong Company; 3rd Dingley Pack; 4th Dandenong North Pack; 1st Windermere Pack; 2nd Rowville Pack; 1st Bell Post Hill Pack; 1st Glethompson Pack; Glen Thompson Local Association.

## RESIGNATIONS AND RETIREMENTS

We acknowledge with gratitude the services given by the following, whose Warrants have been returned.

### Division Commissioners

Mrs K. H. Day, Geelong; Mrs W. W. Elliott, Nepean.

### District Commissioners

Mrs A. T. Bruhn, Barwon Heads/Ocean Grove; Mrs L. Wilson, Rosebud; Mrs E. R. Paynter, Eaglehawk; Mrs P. H. G. Jones, Cheltenham North.

### Ranger Guiders

Mrs M. H. Browne, Mortlake Rangers; Mrs H. L. Allen, Alphington Rangers; Mrs M. A. Regan, Armadale Rangers.

### Assistant Ranger Guider

Mrs D. Coltman, S.R.S. "Bataan II" Rangers.

### Guide Guiders

Mrs I. McKendrick, 2nd Mt. Beauty; Mrs R. K. Turnham, 2nd South Croydon; Miss P. Askew, 7th Malvern; Mrs C. Achterdenbosch, 1st Devon Meadows; Mrs G. N. Wilson, 2nd Dromana; Miss B. J. Willis, 1st Beaufort; Mrs P. A. Copeland, 2nd Red Hill; Mrs R. S. Frey, 3rd Moorleigh; Mrs L. Freshwater, 1st Rosedale; Mrs R. Mills, 1st Harcourt; Mrs V. M. Harris, 1st Edithvale; Mrs L. G. Barr, 1st Rainbow; Miss L. J. Chislett, 1st Allansford; Mrs F. T. Hassell, 1st Colbinabbin; Mrs D. T. Thompson, 2nd Rochester; Mrs A. Zamsky, 3rd Doncaster West; Mrs H. Davis, 6th Preston East; Mrs A. Tomada, 1st Ferny Mreek.

### Assistant Guide Guiders

Mrs A. G. Miller, 3rd Brandon Park; Mrs P. Otto, 1st Dromana; Miss B. R. Smith, 1st Eltham; Mrs S. Bransby, 3rd Doncaster West; Mrs D. Steward, 1st Pascoe Vale South; Mrs G. G. Riley, 1st Warrandyte; Mrs D. Brown, 2nd Echuca; Mrs N. J. Newman, 1st San Remo-Newhaven; Mrs P. Boardman, 2nd Wattle Park; Mrs R. Harborow, 1st Ferny Creek; Mrs R. Drake, 1st Allansford.

## Brownie Guiders

Mrs S. C. Duver, 1st Willaura; Mrs L. K. Garvey, 1st Devon Meadows; Mrs G. E. Price, 2nd Niddrie; Mrs L. Allemand, 1st Mooropna; Mrs H. Carter, 1st South Melbourne; Miss G. May, 2nd Dimboola; Mrs J. Read, 1st Beaufort; Mrs J. H. Clarke, 5th Boronia; Miss M. R. Spargo, 5th Preston; Mrs M. Miller, 2nd Dingley.

### Assistant Brownie Guiders

Miss S. van Beekhuizen, 3rd Hampton; Miss S. L. Davis, 1st Hampton; Mrs H. Hicks, 1st Kaniva; Mrs E. M. Speirs, 1st Dandenong North; Mrs J. M. Lewellin, 1st Yarra Junction; Mrs N. J. Turney, 1st Research; Mrs G. Vincent, 3rd Traralgon; Miss V. Thewlis, 2nd Pakenham; Mrs C. Talbot, 2nd Niddrie; Mrs F. Kelberg, 1st Croydon; Mrs L. F. Moloney, 2nd Kyneton; Mrs L. Matthews, 2nd Trafalgar.

## MESSAGE FROM THE EGG AND EGG PULP MARKETING BOARD

We have been asked to draw members' attention to the fact that, for health reasons, egg cartons must not be re-used. Many charitable institutions have collected and re-sold cartons as a means of fund raising, but this practice is now strongly discouraged. However, used egg cartons are now being repulped and, although the amount of money that can be raised in this way is not large, there is conservation value to the community so re-cycling should be urged.

Used cartons are purchased for re-cycling at a similar price to that paid for scrap paper — currently about \$35 per tonne, which is about 14c per 100 cartons.

Further information is obtainable from Mr. A. T. Harrison at the Egg Marketing Board's offices, phone 64 2821.

Except for articles where copyright restrictions are indicated, material in "Matilda" may be reprinted in Guide and Scout magazines without prior permission. A credit line would however be appreciated.